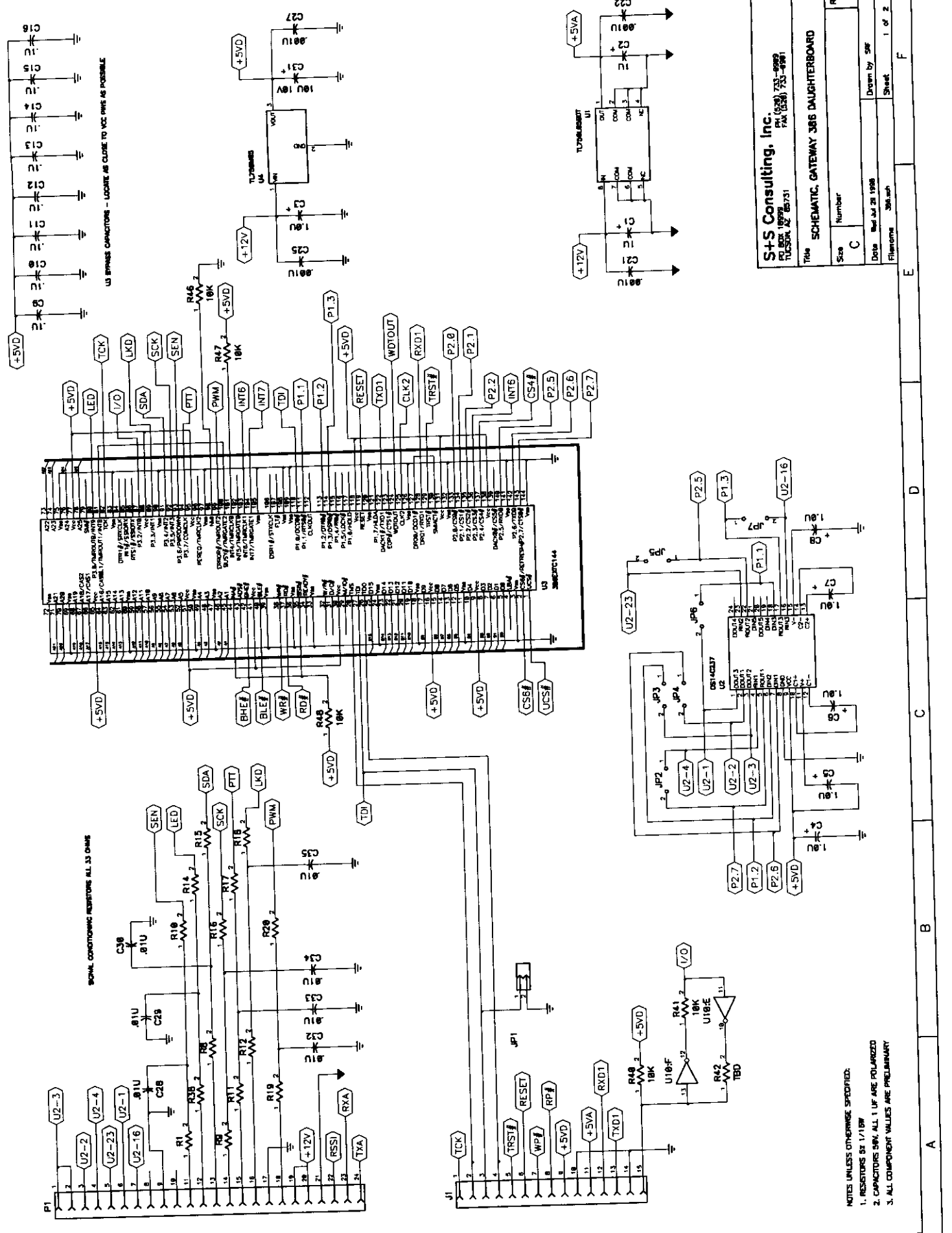


**EXHIBIT 2**

**SCHEMATIC DIAGRAM**





SIGNAL CONDITIONING RESISTORS ALL 33 OHMS

U3 BRASS CONNECTIONS - LOCATE AS CLOSE TO VCC PINS AS POSSIBLE

- NOTES UNLESS OTHERWISE SPECIFIED:
1. RESISTORS 5% 1/10W
  2. CAPACITORS 50V, ALL 1 UF ARE POLARIZED
  3. ALL COMPONENT VALUES ARE PRELIMINARY

**S+S Consulting, Inc.**  
 PROJECT: 10799  
 TUCSON, AZ 85731  
 FAX: (520) 733-8981

Title: SCHEMATIC, GATEWAY 386 DAUGHTERBOARD

Size	C	Number		Rev	c
Date	Wed Jul 28 1988	Drawn by	SMF		
Filename	386.sch	Sheet	1 of 2		

E F

D

C

B

A

1

2

3

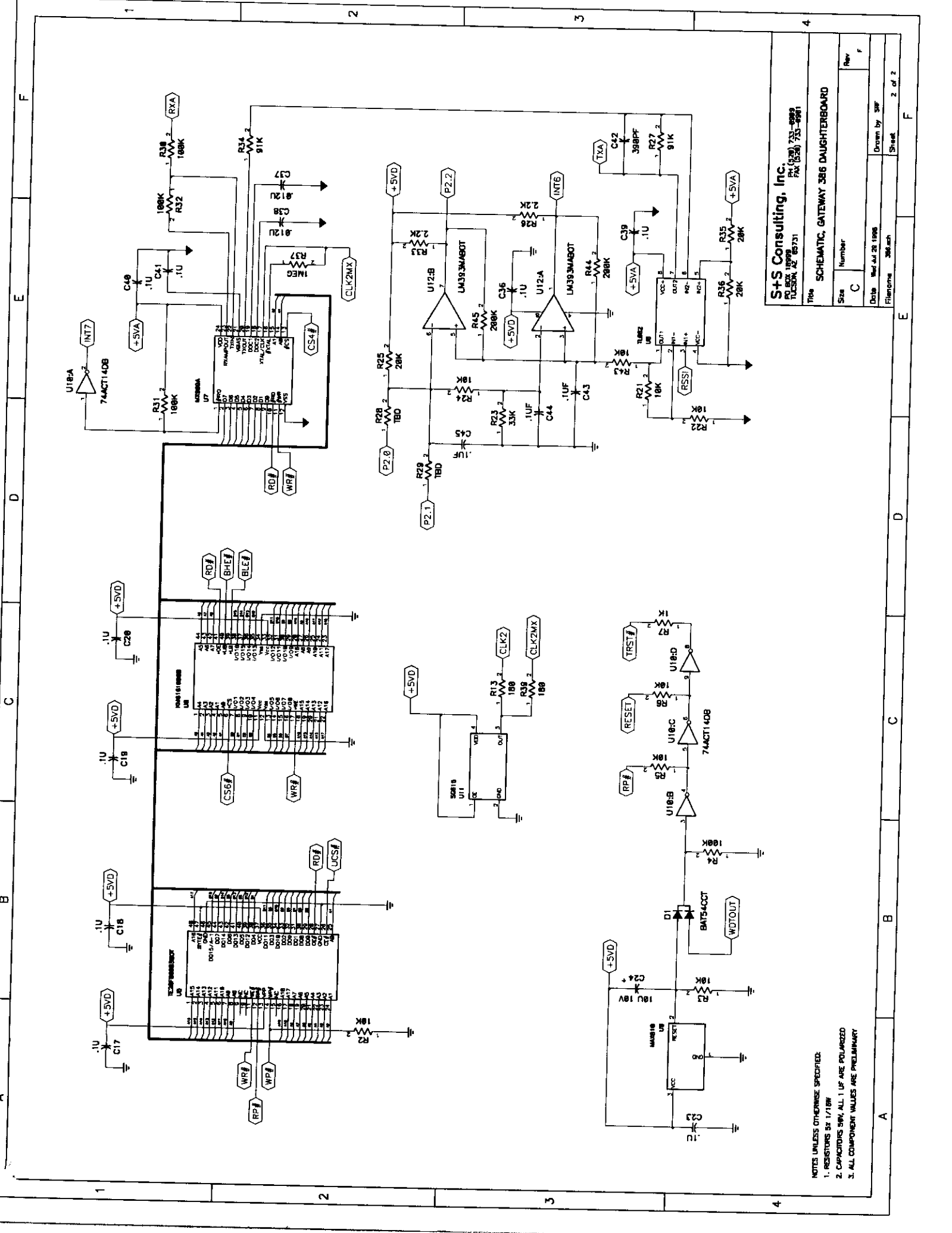
4

1

2

3

4



**S+S Consulting, Inc.**  
 P.O. BOX 15999  
 TULSA, AZ 85731  
 TEL: (505) 733-6981  
 FAX: (505) 733-6981

**SCHEMATIC, GATEWAY 386 DAUGHTERBOARD**

Title	Size	Number	Date	Drawn by	Sheet
	C		Wed Jul 28 1988	SPF	2 of 2
			File name	386.sch	

- NOTES UNLESS OTHERWISE SPECIFIED:
1. RESISTORS 5% 1/16W
  2. CAPACITORS 50V, ALL 1UF ARE POLARIZED
  3. ALL COMPONENT VALUES ARE PRELIMINARY