

LIST OF EXHIBITS

	DESCRIPTION	EXHIBITS	REFERENCE
I.	Identification label Information	1	2.1033 (b) 7 & 2.925
	& General Information	1A	
	1. Production Plans		2.1031
	2. Application References		N/A
	3. Data submittal Procedure		
	4. Similar Certified Transmitter		
II.	Certification Data	2	
III.	External Photographs	3	2.1033 (b) 7
IV.	Theory of Operation & Block Diagrams	4	2.1033 (b) 5
V.	Schematic Diagrams & Antenna Assembly	5	2.1033 (b) 5
VI.	Test Report	6	2.1033 (b) 6
		6	15.247 (a, b, c, g, h)
VII.	Test Set-up Procedures	7	2.1041
VIII.	Instruction Manual	8	2.1033 (b) 3
IX.	Internal Photographs	9	2.1033 (b) 7
X.	Part List / BOM	10	N/A
XI.	RF Exposure Information	11	2.1093
XII.	Operational Description	12	2.1033 (b) 1, 2, 4, 8
	Antenna Requirements	12	15.203
	1. Technical Characteristics 1 - 5		
	2. Application		
XIII.	Cover Letter, Action Requested	13	
	Cover Letter, Agent Authorization To Sign Form 731	13	
	Cover Letter, Requesting Confidentiality	13	

EXHIBIT 1. FCC IDENTIFICATION LABEL 47 CFR 2.1033(C) 11

LOCATION

Top side of the transmitter sensor housing.

Sample FCC ID Labels are on the next page.

Exhibit 1A. General Information

1A.1. Production Plans -- Pursuant 47 CFR 2.1031

Quantity production is planned.

1A.2. Application References -- Pursuant 47 CFR 2.1061

N/A for use Under Part 15 not licensed systems

1. Part 15 Security and Remote Control transmitter

1A.3. Data Submittal Procedure

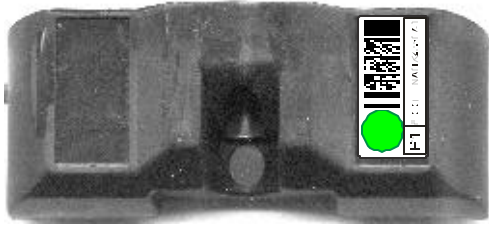
Data located in Exhibit 6 is supplied in accordance with Part 2, Sub-part J and Part 15, Sub-part C of the Commissions' rules and will be submitted electronically.

1A.4. Similar, Currently Certified Intentional Radiator

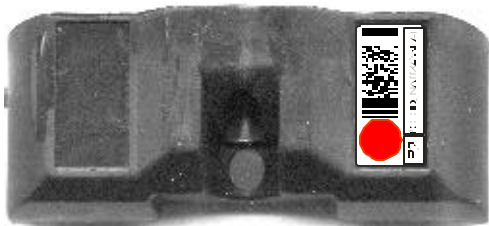
The FCC ID: NATTX433VM, a similar transmitter, is also manufactured by SmarTire Systems, Inc. and used for the same tire pressure and temperature sensor application.

This specification outlines label designs for use on SmarTire transmitters. The label material has been validated for use in automotive tires and must not be changed without SmarTire Engineering authorization.

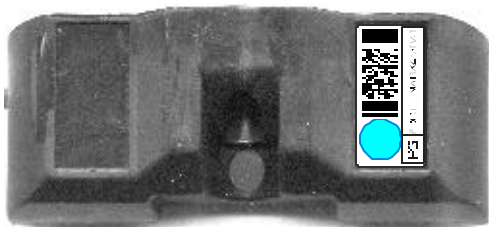
Label placement for valve mount transmitter 200.0065



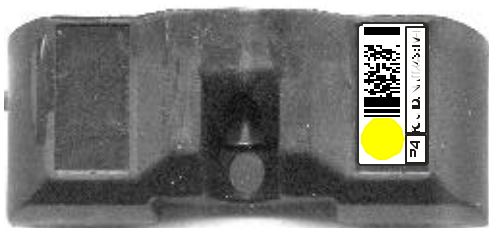
269.0117.15



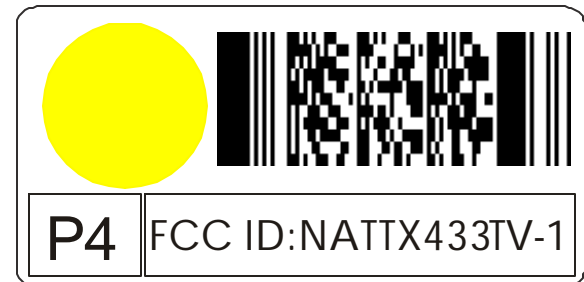
269.0117.16



269.0117.17



269.0117.18



Pre-print label as shown above prior to fulfillment of kit. The barcode is used to identify the position of the transmitter and relate this position to the ID of the transmitter for programming the receiver. The colored code and P(x) number assist the tire technicians so that the transmitters can be installed in their default positions.

See-1097-Product Identification and Labeling Specification for barcode definition

0	0	Original	19-FEB-01	CL
REL	REV	Description	DATE	INIT
SmarTire Systems Inc. #150-13151 Vanier Place, Richmond, British Columbia V6V2J1				
Drawn	Checked	Designer	Manager	
C. Libera		C. Libera	S. Lammers	
Title				
Label specification, transmitter TV-1				
DWGNO. 269.0117.15-18AD (DL-1315)			Page 1	
Proto	Pilot	Production()		