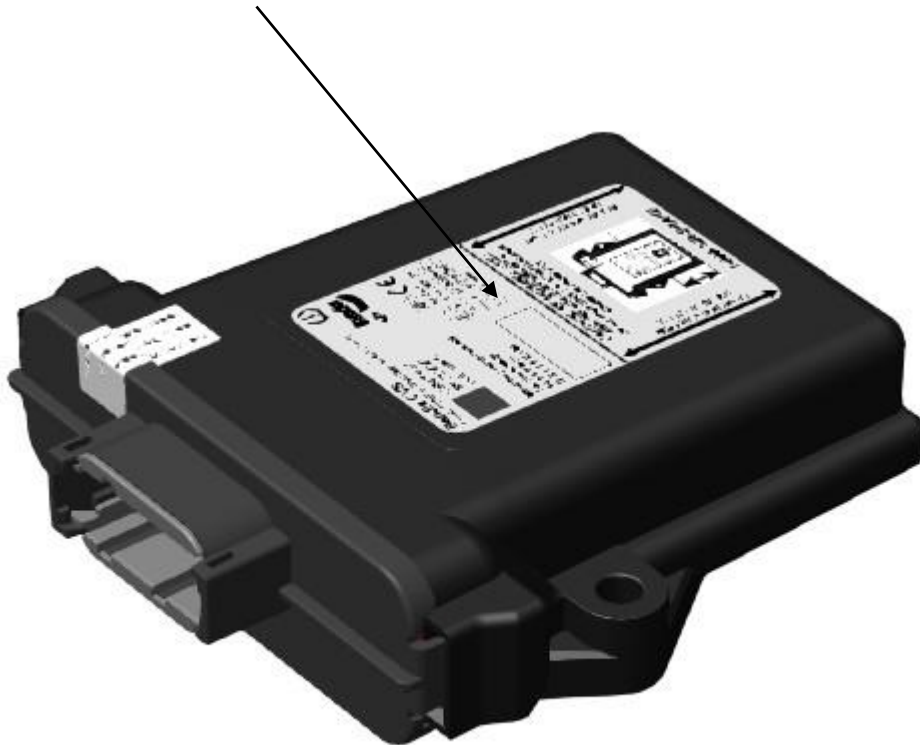


# PROPOSED FCC and IC ID LABEL AND LOCATION

## Label Location Smart Antenna

- The following picture shows the location of the label



## Label for Smart Antenna

**Bendix CVS**  
SMART ANTENNA TPMS Receiver 433.92 MHz

**K055636NRRR**  
CN: ZZZZZZZ  
DOM: WWYY

**Bendix**  
K

**Mounting Hardware M6**  
Torque setting :  
 $10 \pm 1.0$  N.m  
( $7.5 \pm 1.0$  ft.Lb)

**E11** 0XXXXX  
XXX-XXXXXX

**E11** TA-2006/453  
APPROVED


Pat. No. 8907774  
FCC ID : NATRXK055636  
IC ID : 3323A-K055636  
CAN RSS-Gen/CNR-Gen

**CAUTION: RF ANTENNA AREA**  
KEEP THIS AREA CLEAR FROM METAL  
ON ALL FOUR SIDES & POSITION THIS AREA  
BELOW THE FRAME RAIL.

RF ANTENNA AREA FROM  
LINE TO END OF ECU

RF ANTENNA AREA FROM  
LINE TO END OF ECU

**1-800-AIR-BRAKE**



The diagram shows a rectangular Smart Antenna unit with a label on its front. The unit is mounted on a metal frame rail. Two vertical double-headed arrows on either side of the unit indicate the 'RF ANTENNA AREA FROM LINE TO END OF ECU'. A horizontal double-headed arrow at the bottom of the unit indicates the '1-800-AIR-BRAKE' area.