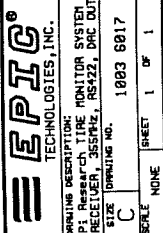


- 14 = RS422 RX (-)
- 13 = RS422 RX (+)
- 12 = RS422 TX (+)
- 11 = 0V GROUND
- 10 = RS422 TX (-)
- 09 = +U SUPPLY
- 08 = GROUND
- 07 = GROUND
- 06 = AF DAC OUT
- 05 = LR DAC OUT
- 04 = 5600/38400
- 03 = LF DAC OUT
- 02 = TICK INPUT
- 01 = RR DAC OUT

NOTES:

- 1.) ALL RESISTORS RC1286, 1%, 1/8W, 100PPM OR BETTER.
- 2.) ALL UNMARKED CAPACITORS CC1286, X7R, 50V, 18K OR BETTER.
- 3.) PROGRAMMED MICROCONTROLLER REFERENCE SUP-8029 FOR MICRO PROGRAM.
- 4.) NO CHANGES OR DUPLICATIONS PERMISSIBLE WITHOUT WRITTEN PERMISSION FROM EPIC TECHNOLOGIES, INC.

| | | | |
|-------------------------------|--|------------------------|--|
| COMPANY: Pi Research | | ENGINEER: Chris Nunroe | |
| WHERE USED/PCB NO.: 1700 0174 | | DATE: 1/17/84 | |
| APPROVALS: | | DRAWN: C. Nunroe | |
| SCALE: NONE | | SHEET: 1 OF 1 | |
| REV: DESCRIPTION OR DATE | | C. Nunroe | |
| RELEASE: CAT/CAM/PCB/ISS | | DATE: 1/17/84 | |
| REV: DESCRIPTION OR DATE | | C. Nunroe | |



DRIVING DESCRIPTION: MONITOR SYSTEM
 PI Research
 RELEASE: CAT/CAM/PCB/ISS, RS422, DAC OUT
 SCALE: NONE
 SHEET: 1 OF 1
 1983 0917