

- f) *Photographs of equipment identification plate*
Photo 1 and doc. no 234700 PD shows the identification plate (Item no 9).

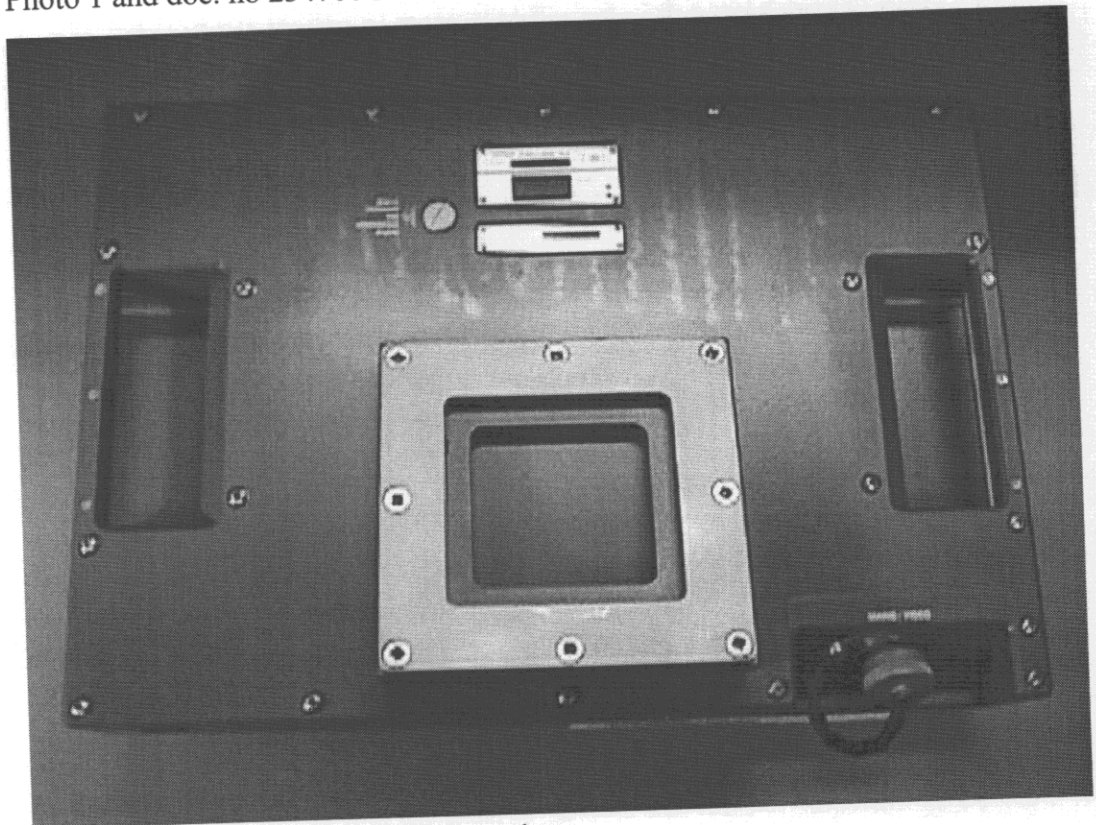


Photo 1: Placement of identification plate

Photographs of equipment construction and internal construction

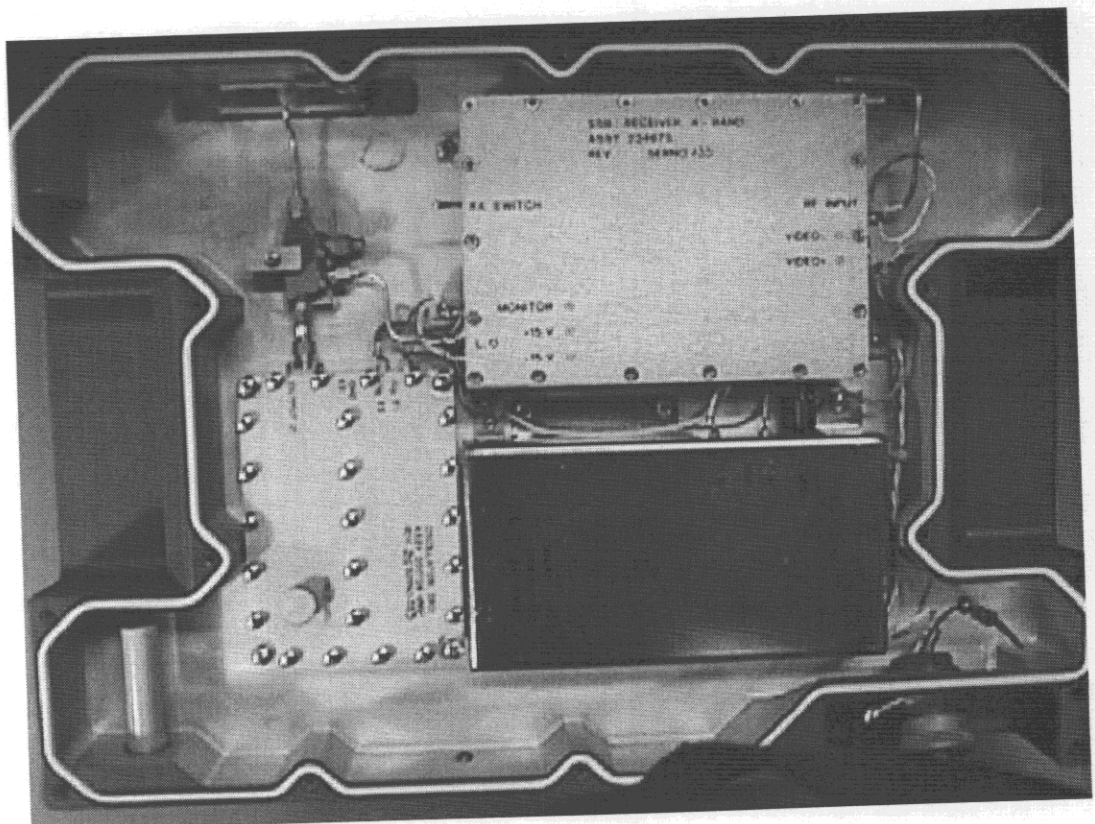


Photo 2: Internal construction

Photographs of measurements setups:



Photo 3: Measurement of radiation of 2.th harmonic

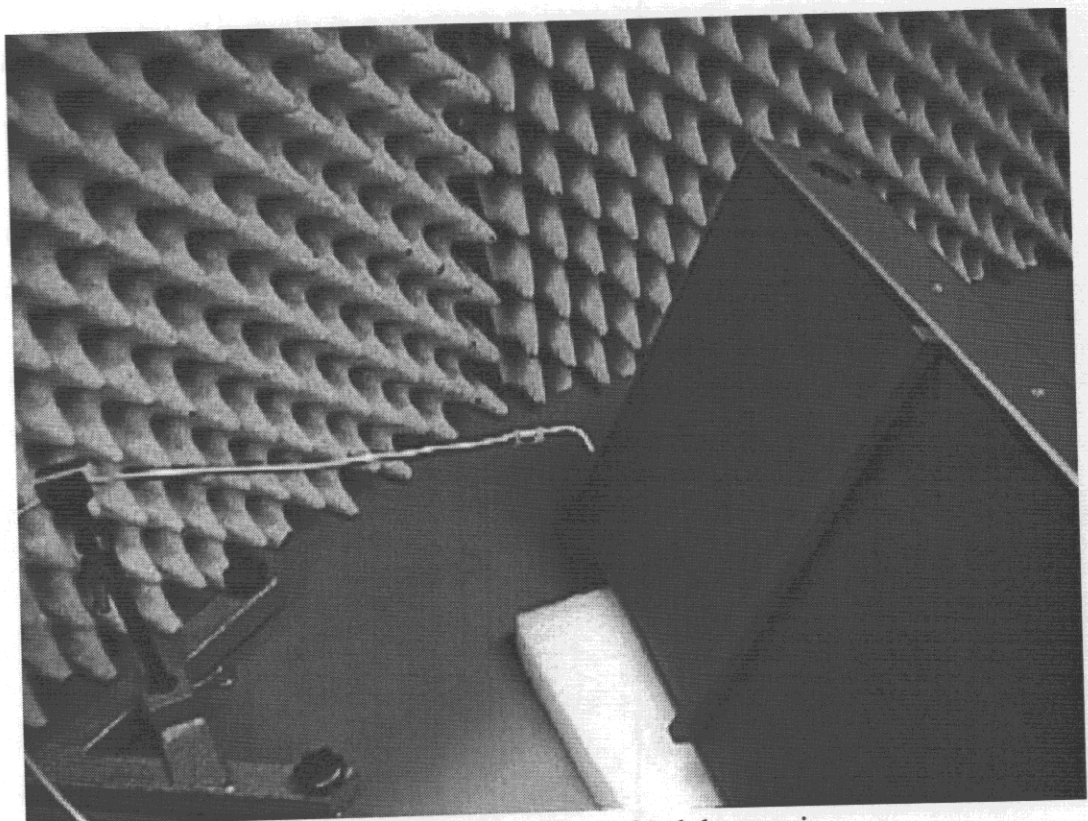


Photo 4: Zoom on measurement of radiation of 2.th harmonic

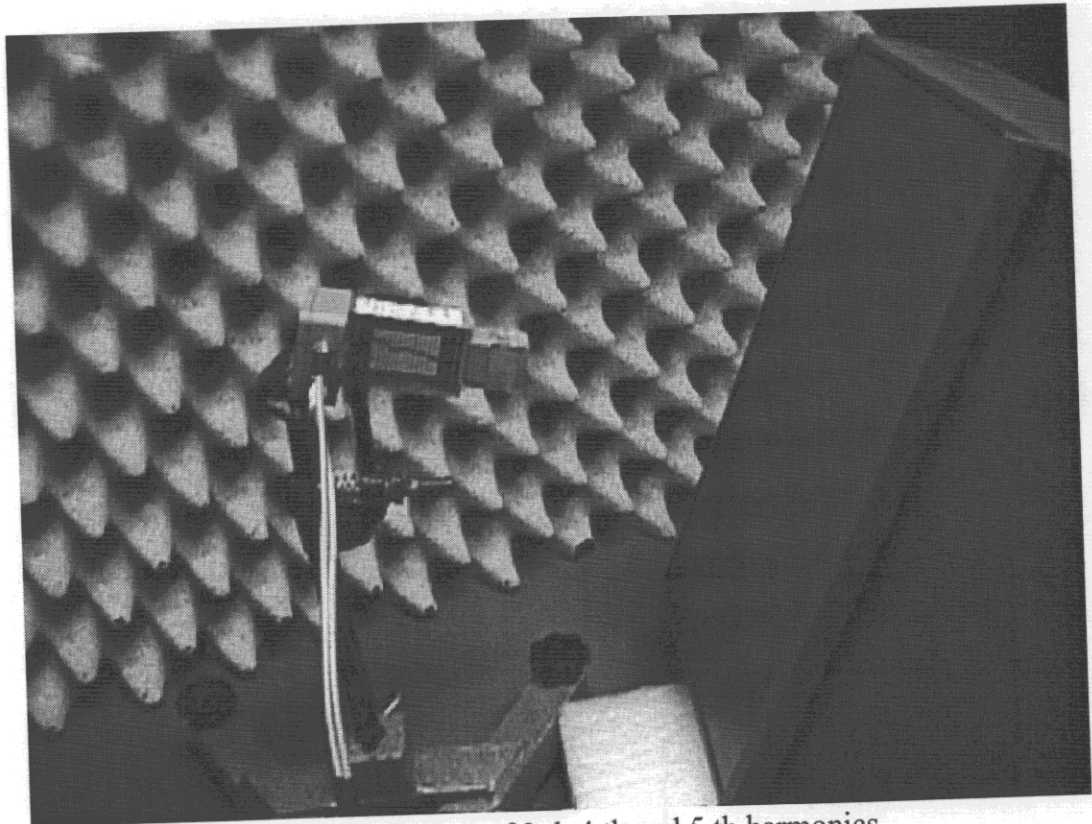


Photo 5: Measurement of radiation of 3.th 4.th and 5.th harmonics

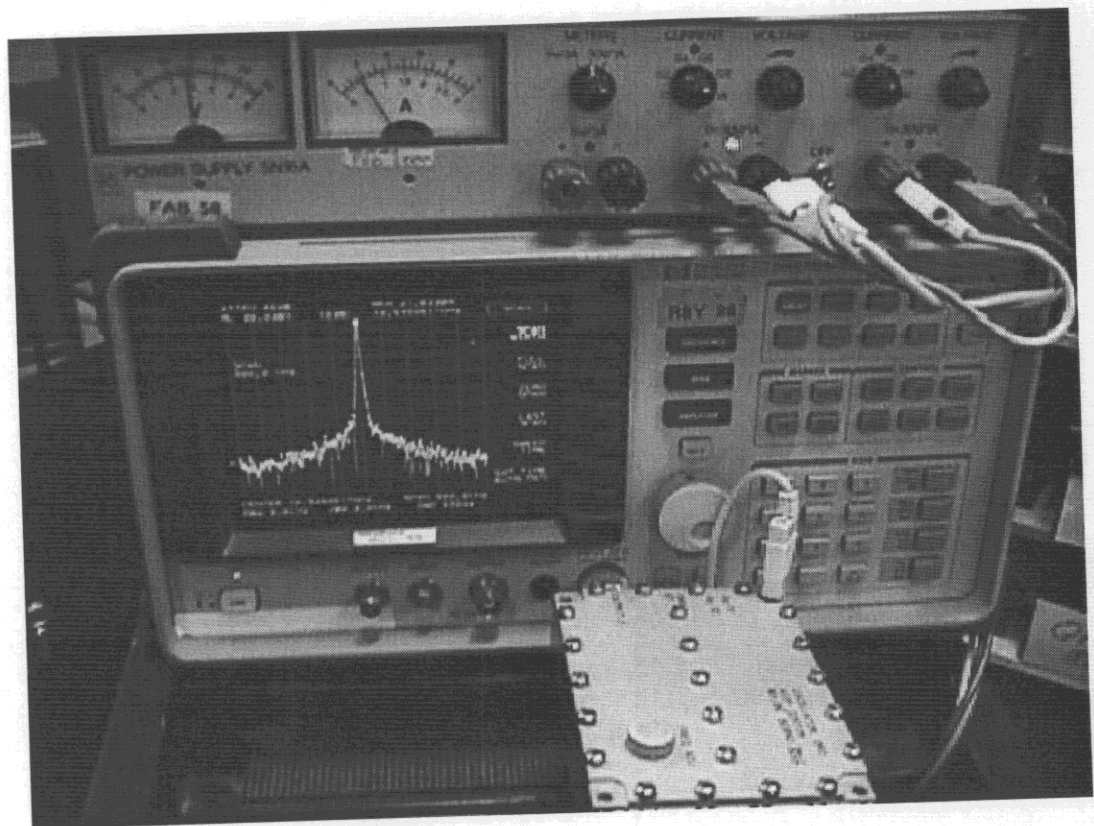


Photo 6: Measurement on DRO