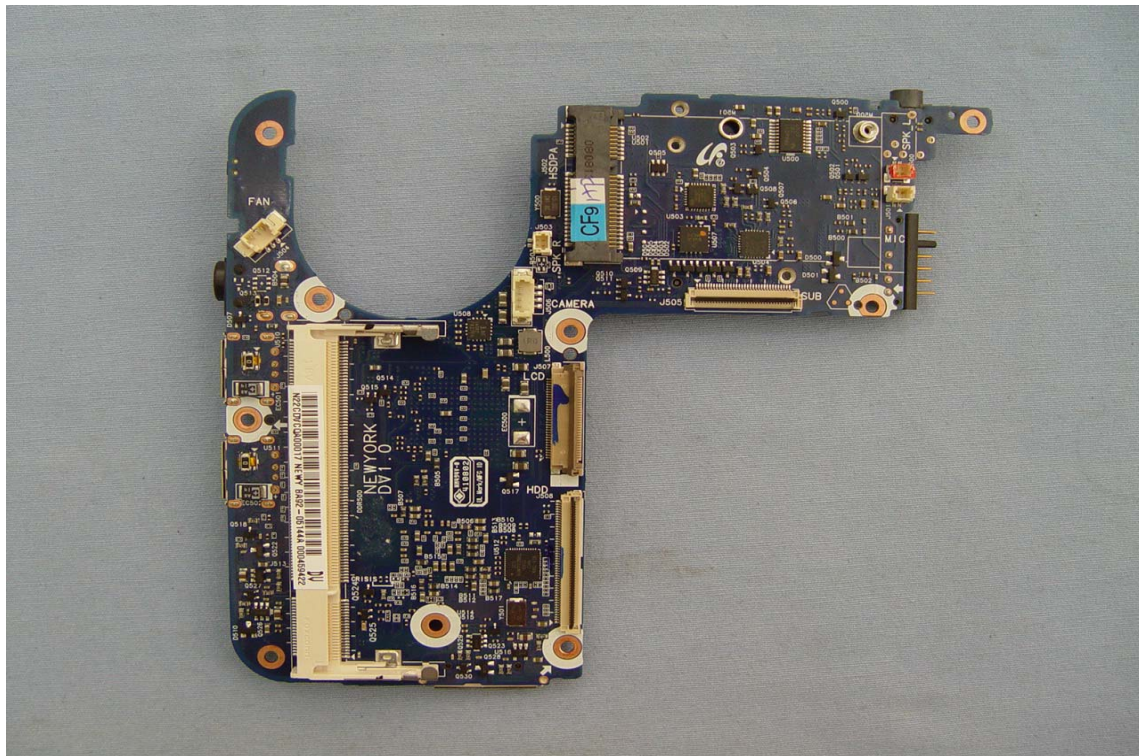


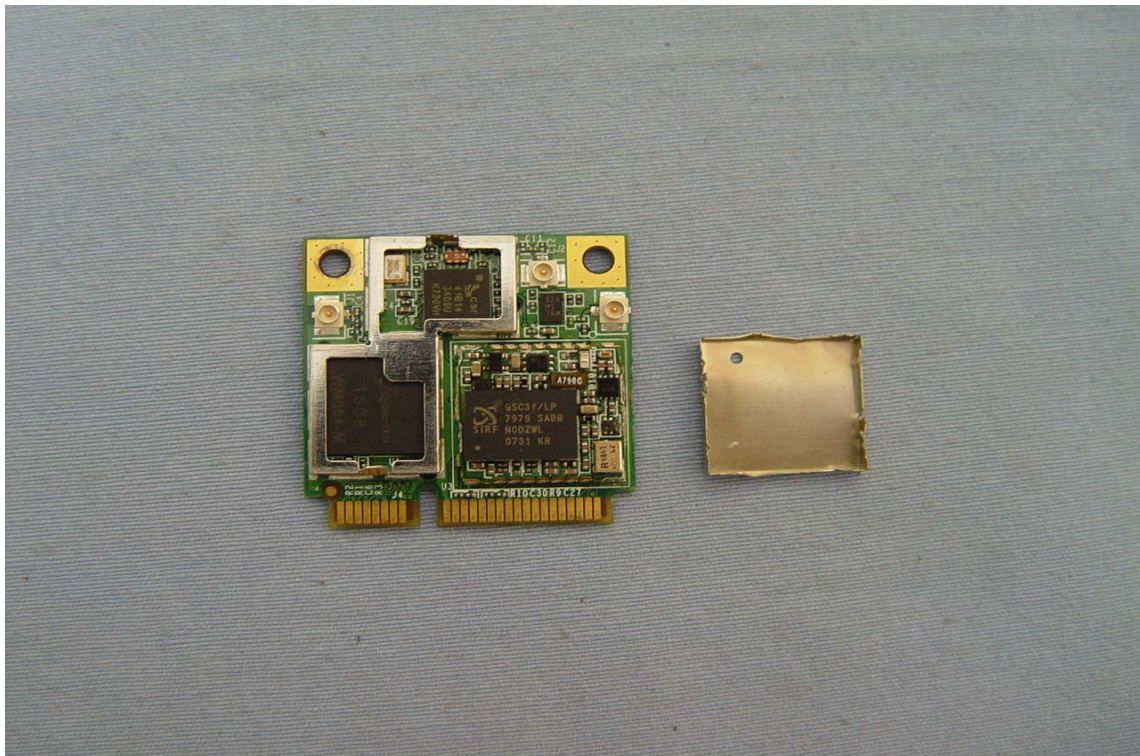
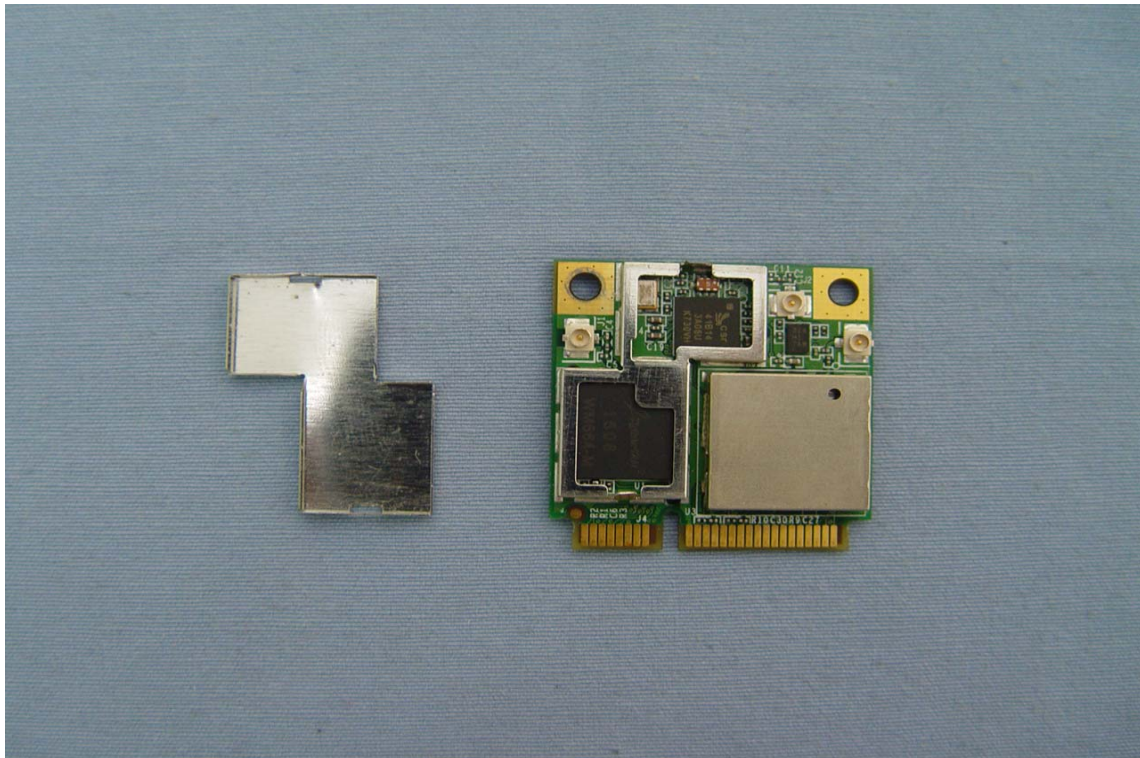


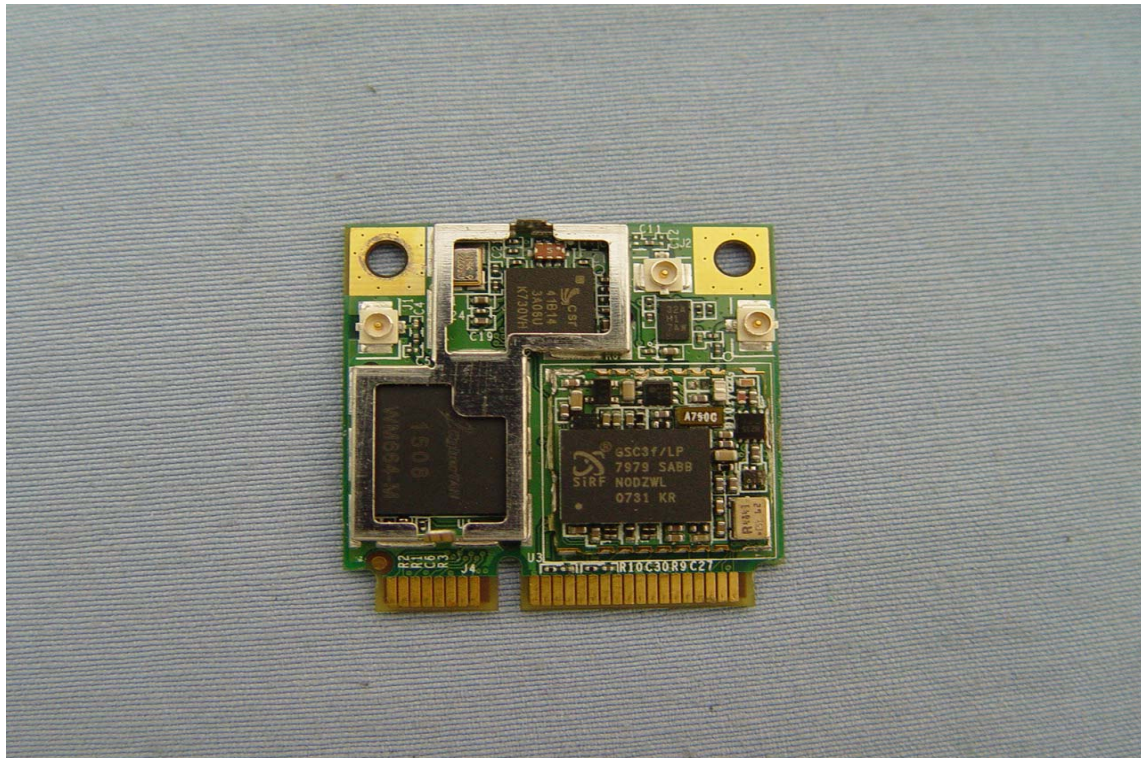
A detailed view of a laptop motherboard, showing the CPU, RAM, and various connectors. The motherboard is blue and populated with numerous components, including capacitors, resistors, and integrated circuits. The CPU is centrally located, and the RAM modules are visible on the right side. The motherboard is connected to a power jack and a USB port on the left, and a SATA drive on the right. The overall layout is compact and efficient, typical of laptop hardware design.



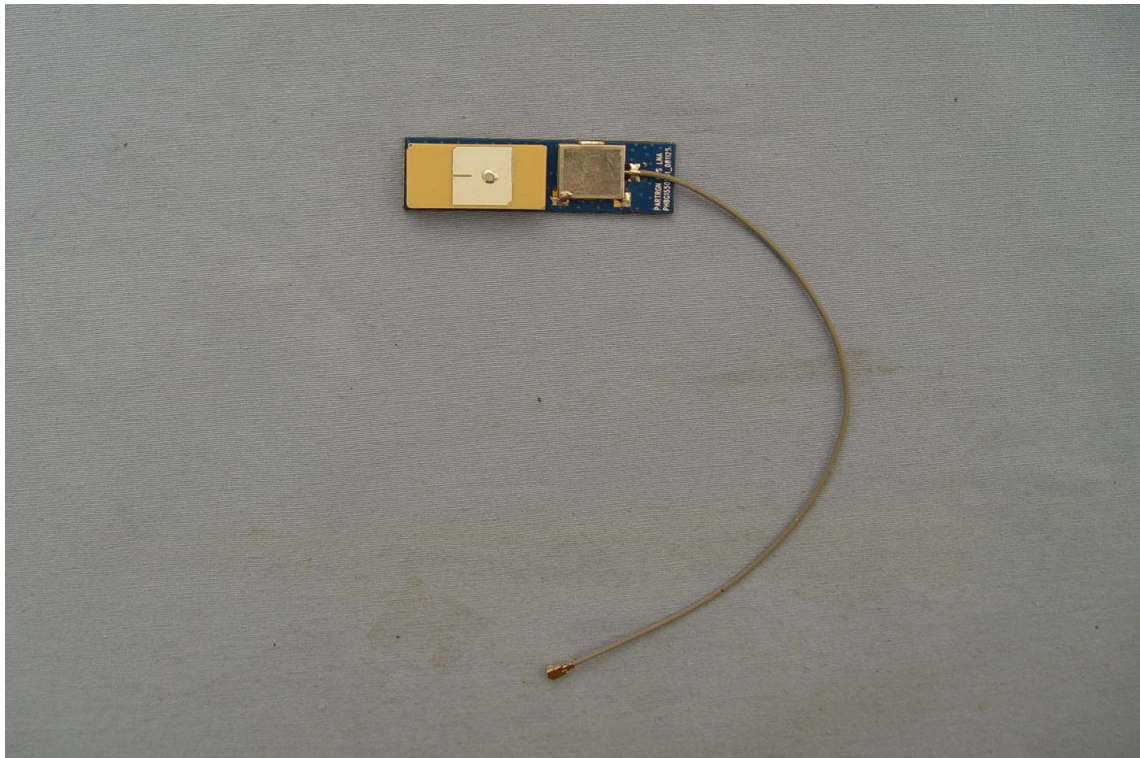
For module



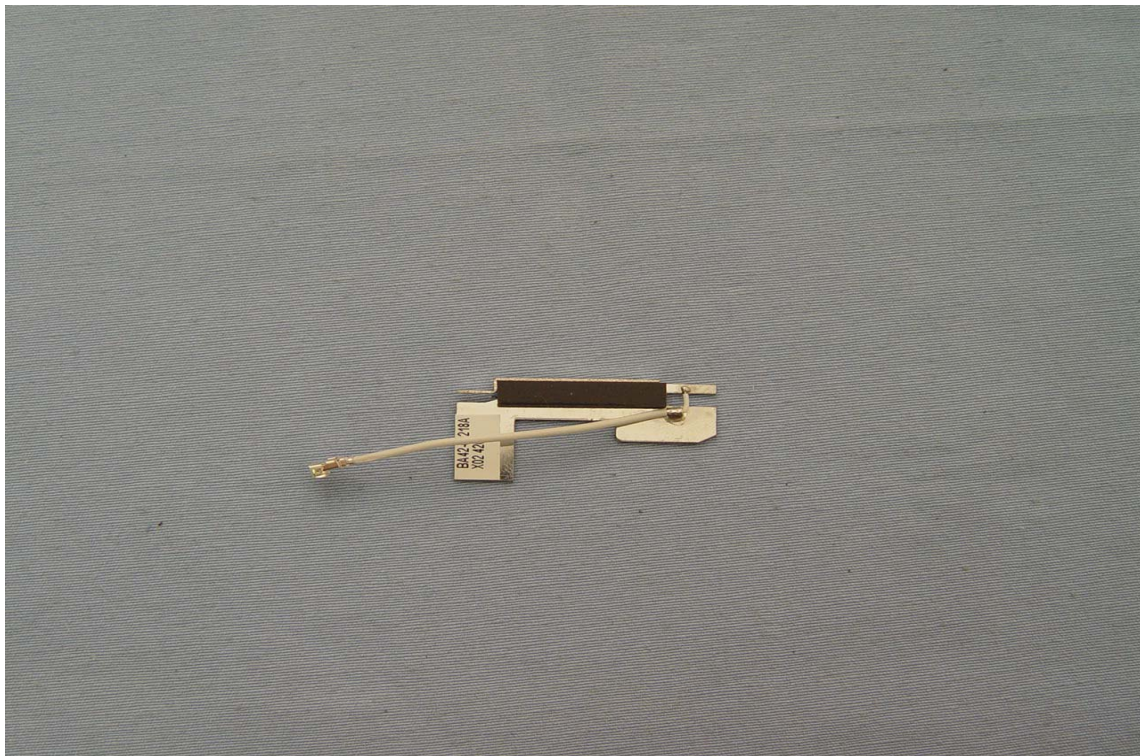




GPS Antenna



WLAN Antenna





Bluetooth Antenna

