

# Homeowners Guide

## Smart Bathroom Fan

PROOF

Record your model number: \_\_\_\_\_

**KOHLER®**

# Thank You for Choosing KOHLER

---

**Need help?** Contact our Customer Care Center.

- USA/Canada: 1-800-4KOHLER (1-800-456-4537) Mexico: 001-800-456-4537  
Hours of Operation: Monday-Friday 8:00 AM -5:00 PM (CT)  
Languages Spoken: English, Spanish, and translation services are available.
- **Service parts:** [kohler.com/serviceparts](http://kohler.com/serviceparts)
- **Care and cleaning:** [kohler.com/clean](http://kohler.com/clean)
- **Patents:** [kohlercompany.com/patents](http://kohlercompany.com/patents)

## Warranty

---

This product is covered under the **KOHLER® Bath Fan Three-Year Limited Warranty**, found at [kohler.com/warranty](http://kohler.com/warranty). For a hardcopy of warranty terms, contact the Customer Care Center.

# Important Safety Information

---

## READ AND FOLLOW ALL INSTRUCTIONS



**WARNING:** To reduce the risk of fire, electric shock, or injury to persons, observe the following:



**DANGER: Risk of electric shock.** Disconnect the electricity to the working area at the main breaker panel before performing installation steps for hardwiring.



**WARNING: Risk of electric shock.** Disconnect the power before servicing.



**WARNING: Risk of injury or property damage.** To reduce the risk of fire or electric shock, do not use this fan with any solid-state speed control device.



**CAUTION: Risk of personal injury.** For general ventilating use only. Do not use to exhaust hazardous or explosive materials and vapors.

**IMPORTANT!** The R value of the ceiling thermal insulation used must not exceed R60.

Use this unit only in the manner intended by the manufacturer. If you have questions, contact the manufacturer.

Before servicing or cleaning unit, switch power off at service panel and lock the service disconnecting means to prevent power from being switched on accidentally. When the service disconnecting means cannot be locked, securely fasten a prominent warning device, such as a tag, to service the panel.

Installation work and electrical wiring must be done by qualified person(s) in accordance with all applicable codes and standards, including fire-rated construction.

Sufficient air is needed for proper combustion and exhausting of gases through the flue (chimney) of fuel burning equipment to prevent back drafting. Follow the heating equipment manufacturer's guideline and safety standards such as those published by the National Fire Protection Association (NFPA), and the American Society for Heating, Refrigeration and Air Conditioning Engineers (ASHRAE), and the local code authorities.

When cutting or drilling into a wall or ceiling, do not damage the electrical wiring and other hidden utilities.

Ducted fans must always be vented to the outdoors.

If this unit is to be installed over a bath or shower, the unit must be marked as appropriate for the application and be connected to a GFCI (Ground Fault Circuit Interrupter) – protected branch circuit.

Remove and immediately recycle or dispose of used batteries according to local regulations and keep away from children. Do NOT dispose of batteries in household trash or incinerate.

Even used batteries may cause severe injury or death.

Call a local poison control center for treatment information.

The compatible battery type shall be CR2032.

The nominal battery voltage is 3V.

Non-rechargeable batteries are not to be recharged.

Do not force discharge, recharge, disassemble, heat above (manufacturer's specified temperature rating) or incinerate. Doing so may result in injury due to venting, leakage or explosion resulting in chemical burns.

Ensure the batteries are installed correctly according to polarity (+ and -).

Do not mix old and new batteries, different brands or types of batteries, such as alkaline, carbon-zinc, or rechargeable batteries.

Remove and immediately recycle or dispose of batteries from equipment not used for an extended period of time according to local regulations.

Always completely secure the battery compartment. If the battery compartment does not close securely, stop using the product, remove the batteries, and keep them away from children.

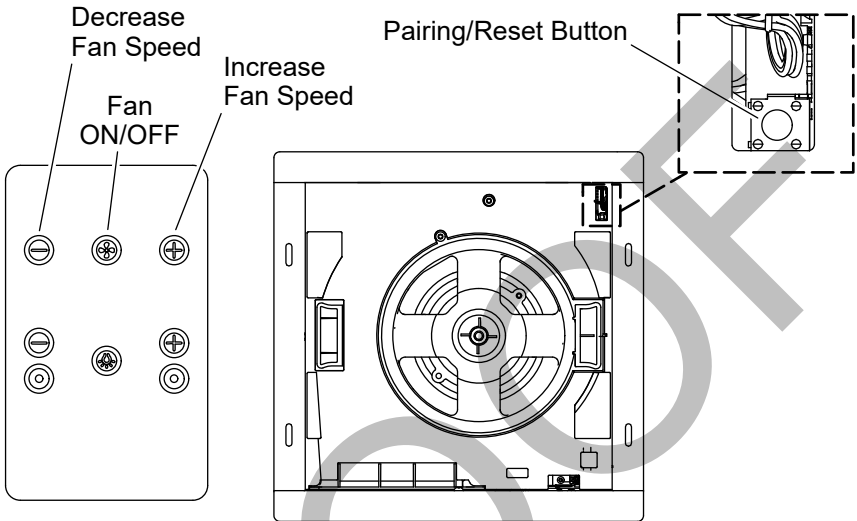
Follow all local plumbing, building, and electrical codes.

**READ AND FOLLOW ALL INSTRUCTIONS**

**SAVE THESE INSTRUCTIONS**

# 1. Pairing the Remote to the Fan

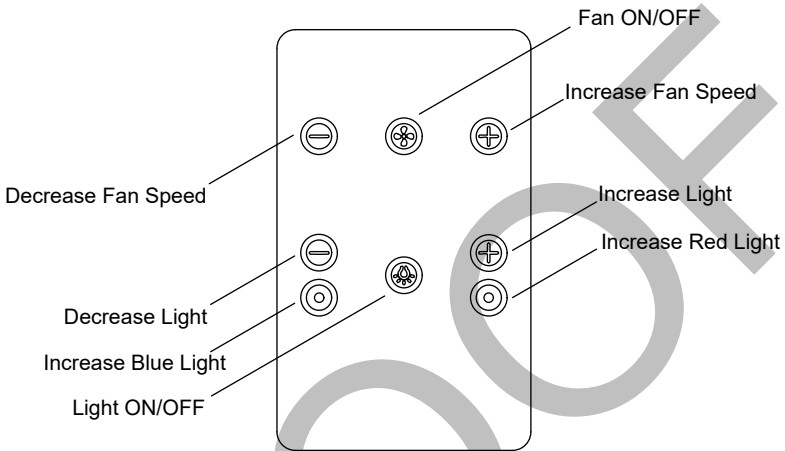
---



- Press the "Fan ON/OFF" button and the "Decrease Fan Speed" button on the fan remote, and the "Pairing/Reset" button on the fan unit simultaneously for 5 seconds to pair the remote to the fan. The remote will beep if the pairing was successful.
- To put the product in setup mode, or to de-provision the product from the user account, press and hold the "Fan ON/OFF" button and the "Increase Fan Speed" button simultaneously for 3 seconds.
- To factory reset the product, press the "Pairing/Reset" button 5 times. The remote will beep with each press.

## 2. Remote Operation

---



- Press the fan button to turn the fan ON or OFF.
- Press the "-" button to decrease the fan speed.
- Press the "+" button to increase the fan speed.

### Light Operation

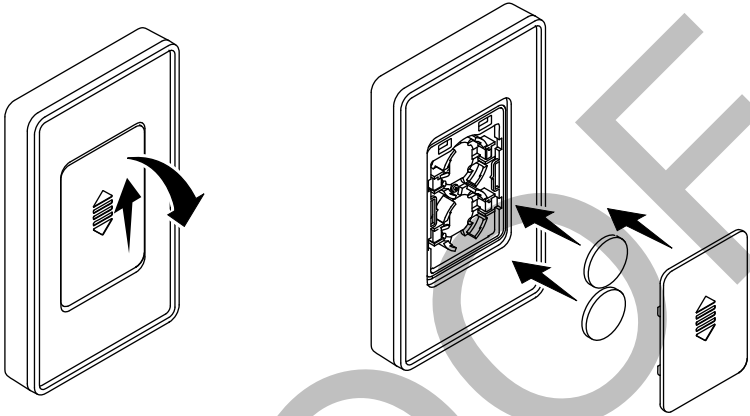
- Press the light button to turn the light ON or OFF.
- Press the "-" button to decrease the light's brightness.
- Press the "+" button to increase the light's brightness.

### Blue/Red Light

- Press the blue button to change the light to a cooler blue color.
- Press the red button to change the light to a warmer red color.

### 3. Replacing the Batteries

---



- Remove the remote from the docking plate.
- Open the battery compartment on the remote by sliding the battery cover upwards.
- Remove the batteries.
- Install the replacement batteries.
- Reinstall the battery cover to the battery compartment.
- Place the remote back on the docking plate.

# Troubleshooting

This troubleshooting guide is for general aid only. For warranty service, contact your dealer or wholesale distributor, or contact the Customer Care Center using the information located in the front of this manual.

Symptoms	Probable Cause	Recommended Action
1. The blower is not working.	<ul style="list-style-type: none"> <li>A. No power to the fan.</li> <li>B. The motor is damaged.</li> <li>C. The remote is not working.</li> </ul>	<ul style="list-style-type: none"> <li>A. Check the circuit breaker. Check wire connections in fan junction box.</li> <li>B. Replace the fan box.</li> <li>C. Replace the remote batteries. Pair the remote to the fan again.</li> </ul>
2. The blower noise level increased.	<ul style="list-style-type: none"> <li>A. Loose blower nut.</li> <li>B. Build up of dust particles.</li> <li>C. Blocked vent.</li> </ul>	<ul style="list-style-type: none"> <li>A. Tighten the nut with a wrench.</li> <li>B. Clean the blower to remove dust.</li> <li>C. Clean the vent to remove the blockage.</li> </ul>
3. Light is not working.	<ul style="list-style-type: none"> <li>A. No power to the fan.</li> <li>B. The wire from the light cover is not connected.</li> <li>C. The LED board is damaged.</li> <li>D. Power supply failure.</li> </ul>	<ul style="list-style-type: none"> <li>A. Check the circuit breaker. Check the wire connections in the fan junction box.</li> <li>B. Lower the light cover and connect the wire to the fan box.</li> <li>C. Replace the light cover.</li> <li>D. Replace the light cover.</li> </ul>
4. The Kohler Konnect App not working.	<ul style="list-style-type: none"> <li>A. The fan is not connected to the home network.</li> <li>B. The app is not provisioned to the Kohler cloud.</li> </ul>	<ul style="list-style-type: none"> <li>A. Connect the fan to the home network following the app instructions.</li> <li>B. Provision the Kohler Konnect App to log into the Kohler cloud.</li> </ul>



# Compliance

---

## Remote FCC ID: N82-KOHLER058

FCC compliance statement for Fan Remote Control:

This device complies with Part 15 of the FCC Rules. Operation is subject to the following two conditions: (1) this device may not cause harmful interference, and (2) this device must accept any interference received, including interference that may cause undesired operation.

This equipment generates, uses and can radiate radio frequency energy and, if not installed and used in accordance with the instructions, may cause harmful interference to radio communications. However, there is no guarantee that interference will not occur in a particular installation. If this equipment does cause harmful interference to radio or television reception, which can be determined by turning the equipment off and on, the user is encouraged to try to correct the interference by one or more of the following measures:

- Reorient or relocate the receiving antenna.
- Increase the separation between the equipment and receiver.
- Connect the equipment into an outlet on a circuit different from that to which the receiver is connected.
- Consult the dealer or an experienced radio/TV technician for help.

### RF Exposure Information

The device has been evaluated to meet general RF exposure requirement. The device can be used in portable exposure condition without restriction.

# Compliance

---

## **Fan Contains FCC ID: Z64-CC3235MOD, N82-KOHLER051**

This device complies with Part 15 of the FCC Rules. Operation is subject to the following two conditions: (1) this device may not cause harmful interference, and (2) this device must accept any interference received, including interference that may cause undesired operation.

Changes or modifications not expressly approved by the party responsible for compliance could void the user's authority to operate the equipment.

This equipment has been tested and found to comply with the limits for a Class B digital device, pursuant to Part 15 of the FCC Rules. These limits are designed to provide reasonable protection against harmful interference in a residential installation. This equipment generates, uses, and can radiate radio frequency energy and, if not installed and used in accordance with the instructions, may cause harmful interference to radio communications. However, there is no guarantee that interference will not occur in a particular installation. If this equipment does cause harmful interference to radio or television reception, which can be determined by turning the equipment off and on, the user is encouraged to try to correct the interference by one of the following measures:

- Reorient or relocate the receiving antenna.
- Increase the separation between the equipment and receiver.
- Connect the equipment into an outlet on a circuit different from that to which the receiver is connected.
- Consult the dealer or an experienced radio/TV technician for help.

## **RF Exposure Statement**

This transmitter with its antenna complies with FCC's RF exposure limits for general population/uncontrolled exposure. This device must not be co-located or operated in conjunction with any other antenna or transmitter. This device should be operated with a minimum distance of 7-7/8" (200 mm) between the radiator and your body.

## **Remote IC: 4554A-KOHLER058**

## **Fan Contains IC: 451I-CC3235MOD, 4554A-KOHLER051**

This device contains license-exempt transmitter(s)/receiver(s) that comply with Innovation, Science and Economic Development Canada's license-exempt RSS(s): (1)

this device may not cause interference, and (2) this device must accept any interference, including interference that may cause undesired operation of the device.

This transmitter with its antenna complies with Industry Canada RF Exposure Limits for General Population/ Uncontrolled Exposure.

This Class B digital apparatus complies with Canadian ICES-003.

PROOF

PROOF

PROOF

[kohler.com](https://www.kohler.com)

THE BOLD LOOK  
OF **KOHLER**®

©2024 Kohler Co.



1589813-5

1589813-5-A