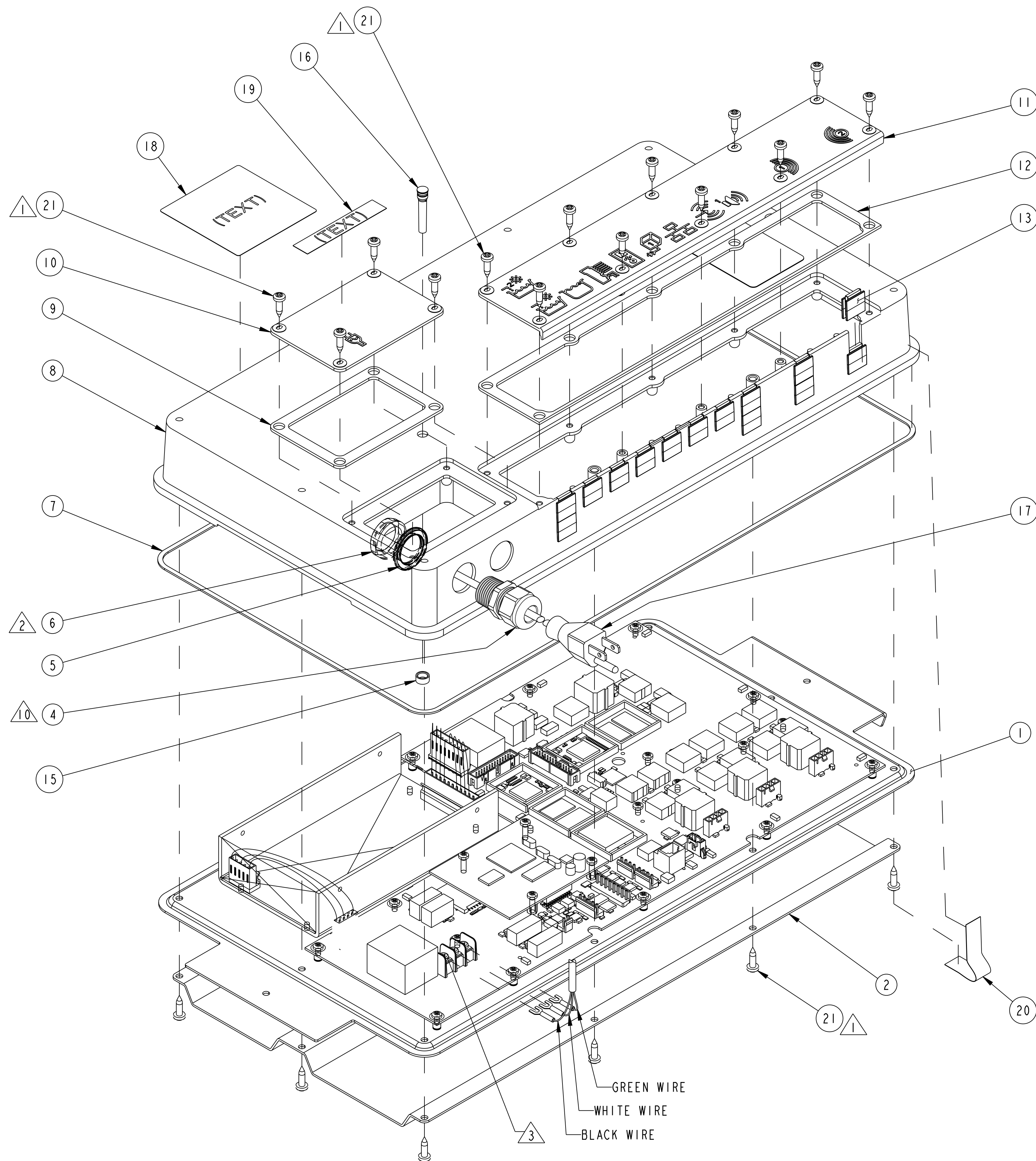


NOTES:

- ESTIMATED WEIGHT: 7.6 LBS [3.4473 KG]
- ALL DIMENSIONS ARE IN INCHES [MM]. SECONDARY DIMENSIONS IN BRACKETS ARE REFERENCE ONLY. DO NOT USE SECONDARY DIMENSIONS FOR MANUFACTURING OR INSPECTION.

ALL DIMENSIONS IN: INCHES [MM]				DIMENSIONING AND TOLERANCING PER ASME Y14.5M-1994			
				TOLERANCES UNLESS OTHERWISE SPECIFIED	APPROVED	DATE	PLOT DATE
				.XXX ± 0.010	DON FREIER	02.12.08	02.12.08
				.XX ± 0.02	DRAWN	DATE	CHECKED
				.X ± 0.1	N. SURESH	01.22.08	DATE
				ANG ± 3.0	DO NOT SCALE DRAWING	PRO/E	DWG SIZE
					THIRD ANGLE PROJECTION		
THIS DRAWING IN DESIGN AND DETAILS IS THE PROPERTY OF KOHLER CO. AND MAY NOT BE USED EXCEPT IN CONNECTION WITH KOHLER CO. WORK. ALL RIGHTS OF DESIGN OR INVENTION ARE RESERVED.				DESCRIPTION: <b>ASSEMBLY, ENCLOSURE</b> ASSEMB NAME: 1086406			
DWG REVISION RECORD				DWG. NO. 1086406			
1,2	-	NS	SEE PCI P0800424	02.12.08			
SHT	SYM	BY	DESCRIPTION	DATE			
8							
7							
6							
5							
4							
3							
2							
1							



EXPLODED ISOMETRIC VIEW  
SCALE 0.625

ITEM	QTY.	PART NO.	DESCRIPTION
1	1	1086407	ASSEMBLY, BASE & PCB'S
2	1	1069052	HEATSINK
4	1	1068929	GROMMET, LTF 1/2"
5	1	1070876	SEAL, 1.24 OD X .82 ID X .125 THK
6	1	1068962	LOCK NUT, NLN 1/2" NPT
7	1	1068029	GASKET, FOAM, BASE
8	1	1065705	COVER, ENCLOSURE
9	1	1066496	GASKET, FOAM, POWER
10	1	1085543	COVER, POWER
11	1	1085544	COVER, ACCESSORY
12	1	1066497	GASKET, FOAM, ACCESSORY
13	14	1065703	GROMMET, WIRE
15	1	1072323	RETAINING RING, LIGHT PIPE
16	1	1072319	LIGHT PIPE
17	1	1069416	CSM, POWER CORD
18	1	1093131	LABEL, FH MEDIA MODULE
19	1	1077807	LABEL, CAUTION, POWER
20	1	1077809	LABEL, NO SERVICEABLE
21	26	1081232	SCREW, #8 X .625, THRD FORM

NOTES:

- 1 TORQUE SCREW (ITEM 21) TO 10-15 IN-LBS [1,13-1,69 Nm].
- 2 TORQUE NUT (ITEM 6) TO 25-30 IN-LBS [2,82-3,39 Nm].
- 3 TORQUE TERMINAL SCREWS TO 12-13 IN-LBS [1,36-1,47 Nm].
- 4. ANY CHANGE IN DESIGN OR MANUFACTURING REQUIRES PRIOR APPROVAL FROM KOHLER GLOBAL FAUCETS DESIGN ENGINEERING.
- 5. FOUNTAINHEAD BATH ELEC CTRL DSN SPEC: H600\_204
- 6. FOUNTAINHEAD BATH ELEC CTRL PERF SPEC: H600\_205.
- 7. FOUNTAINHEAD PROTOCOL: H600\_206.
- 8. MUST MEET IPC-A-610 CLASS TWO.
- 9. ASSEMBLY MUST BE RoHS COMPLIANT.
- 10 ENCLOSURE STRAIN RELIEF (ITEM 4) MUST WITHSTAND A 35 LB. PULL TEST FROM ANY DIRECTION FOR 1 MINUTE. TORQUE STRAIN RELIEF NUT TO 35-40 IN-LBS. [3,95-4,52 Nm].
- 11. THERE ARE 3 CUSTOMER CHARACTERISTIC SYMBOLS ON THIS DRAWING.

ALL DIMENSIONS IN: INCHES [MM]					DIMENSIONING AND TOLERANCING PER ASME Y14.5M-1994				
SEE SHEET #1					TOLERANCES UNLESS OTHERWISE SPECIFIED	APPROVED	DATE	PLOT DATE	SCALE
					.XXX ± 0.010 .XX ± 0.02 .X ± 0.1 ANG ± 3.0	DON FREIER	02.12.08	02.12.08	1:1
DWG REVISION RECORD					DO NOT SCALE DRAWING	DATE	CHECKED	DATE	DWG SIZE
					N. SURESH	01.22.08			D
1,2					THIRD ANGLE PROJECTION				
SHT SYM BY DESCRIPTION DATE					<b>KOHLER</b> KOHLER CO. KOHLER, WISCONSIN 53044 DESCRIPTION ASSEMBLY, ENCLOSURE ASSEM NAME: 1086406				
					DWG. NO. 1086406 SHT 2 of 2				