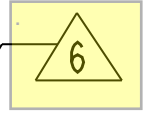


(.504 )  
[12,79]

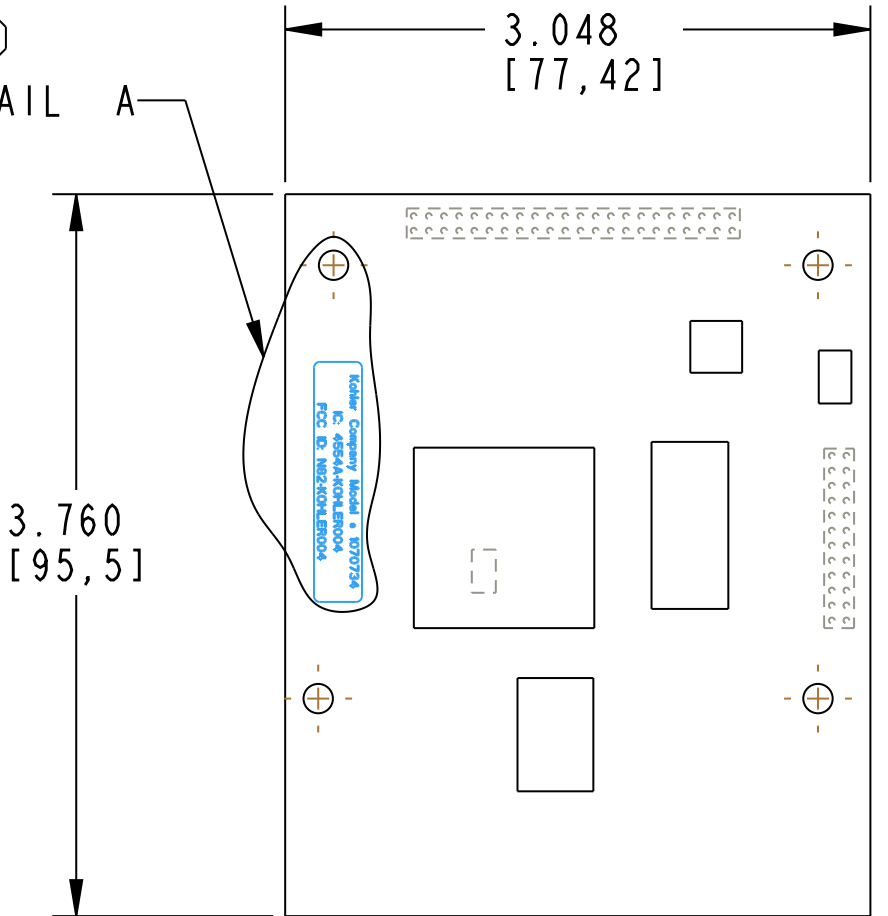
(1.25 )  
[31,8]

(.15 )  
[3,8]

Kohler Company Model # 1070734  
 IC: 4554A-KOHLER004  
 FCC ID: N82-KOHLER004

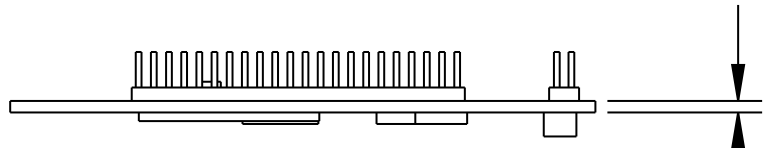
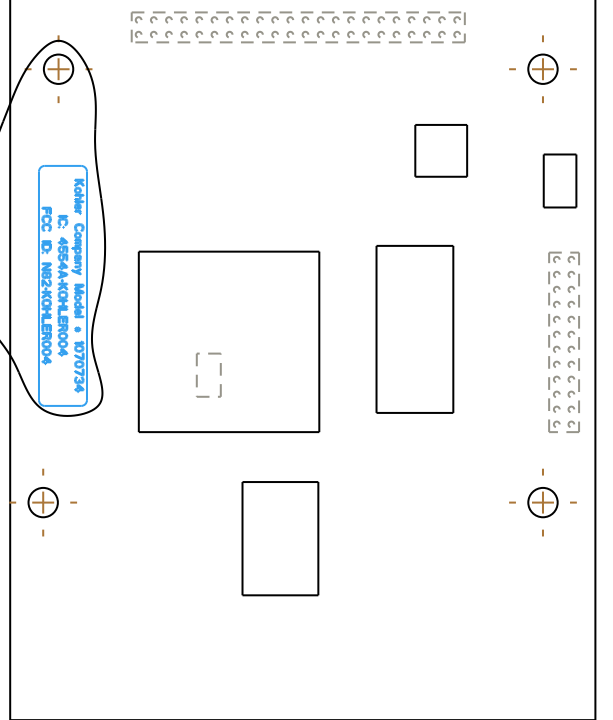


(E1) SEE DETAIL A



3.760  
[95,5]

3.048  
[77,42]



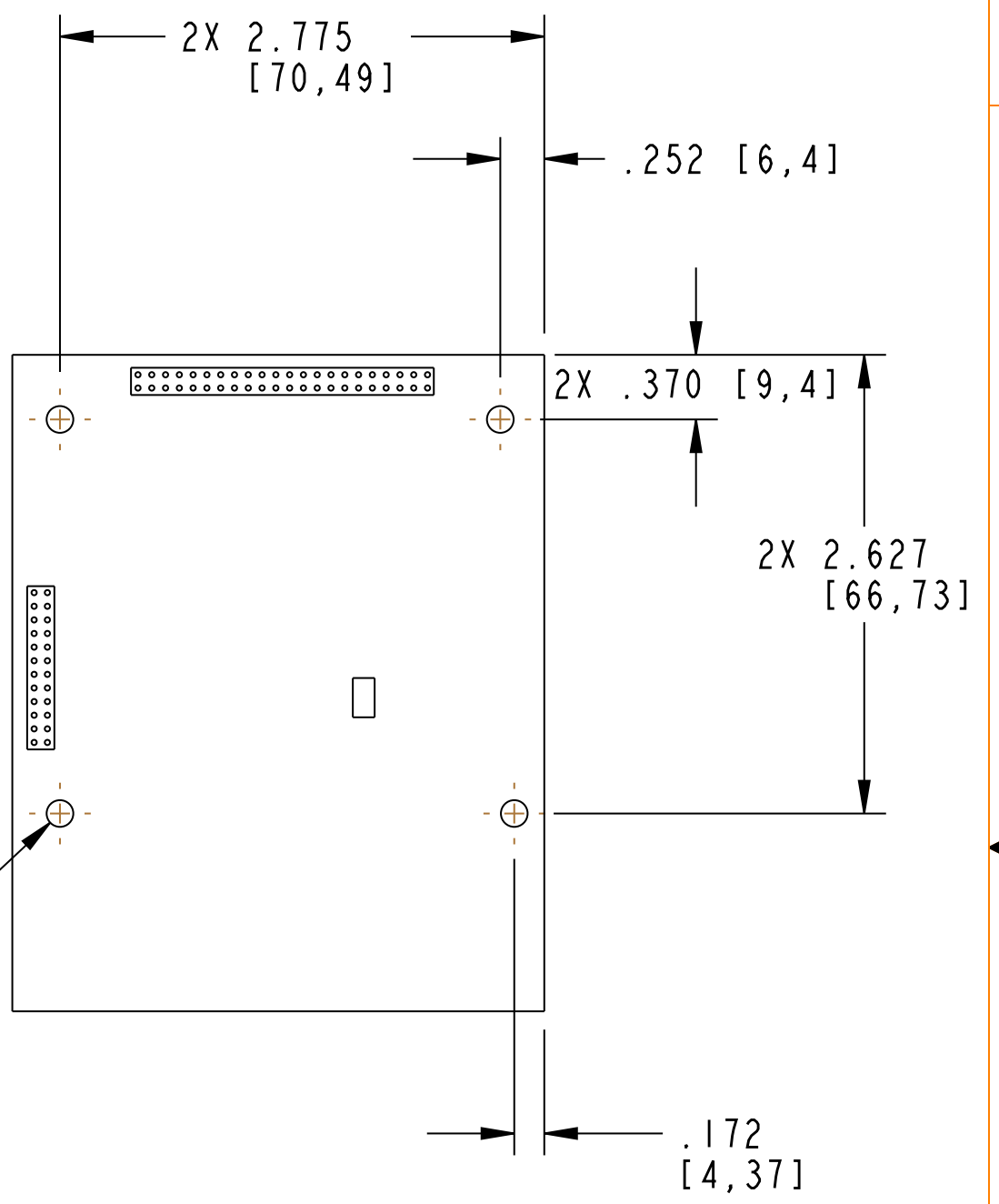
.060  
[1,52]  
BOARD THICKNESS

.125  
[3,18]

.255  
[6,48]

4X Ø .153  
[3,89]

.100  
[2,54]



2X 2.775  
[70,49]

.252 [6,4]

2X .370 [9,4]

2X 2.627  
[66,73]

.172  
[4,37]

(E2) DETAIL A SCALE 5.000

NOTES:

1. ANY CHANGE IN DESIGN OR MANUFACTURING REQUIRES PRIOR APPROVAL FROM KOHLER PLUMBING AMERICAS DESIGN ENGINEERING.
2. MANUFACTURER: ROKU LABS  
PART NUMBER: ESB303 OR ESB305.  
PROGRAMMED WITH ROKU WMM FIRMWARE VERSION: 2.7.85
3. REFERENCE [www.rokulabs.com/wmmoem](http://www.rokulabs.com/wmmoem) FOR THE WMM HARDWARE REFERENCE MANUAL AND ROKU CONTROL PROTOCOL SPECIFICATION.
4. ALL DIMENSIONS ARE IN INCHES.  
SECONDARY DIMENSIONS IN BRACKETS ARE REFERENCE ONLY.  
DO NOT USE SECONDARY DIMENSIONS FOR MANUFACTURING OR INSPECTION.
5. ASSEMBLY MUST BE RoHS COMPLIANT.

(E3) AFFIX LABEL (KOHLER PART # 1103140) CONTAINING FCC & IC DETAILS. POSITION LABEL EQUIDISTANCE BETWEEN SCREW HOLES AS SHOWN.

ALL DIMENSIONS IN: INCHES				
SHT	SYM	BY	DESCRIPTION	DATE
I	E	NS	SEE PCI #P0804167	06.04.08
I	D	KC	SEE PCI #P0803377	04.22.08
I	C	KC	SEE PCI #P0801545	02.11.08
I	B	KC	SEE PCI #P0707813	11.05.07
I	A	KC	SEE PCI #P0702767	04.16.07
I	-	JJB	SEE PCI P0701427	02.22.07

DWG REVISION RECORD

DIMENSIONING AND TOLERANCING PER ASME Y14.5M-1994				
APPROVED		DATE	PLOT DATE	SCALE
DON FREIER		02.22.07	06.04.08	1.000
DRAWN	DATE	CHECKED	DATE	DWG
CMS	10.03.06	-	-	C
DO NOT SCALE DRAWING			PRO/E	SIZE
			THIRD ANGLE PROJECTION	
KOHLER CO. KOHLER, WISCONSIN 53044				
DESCRIPTION			PART NAME: 1070734	
ROKU PCB, MEDIA MODULE				
DWG. NO. 1070734			SHT 1 of 1	

THIS DRAWING IN DESIGN AND DETAILS IS THE PROPERTY OF KOHLER CO. AND MAY NOT BE USED EXCEPT IN CONNECTION WITH KOHLER CO. WORK. ALL RIGHTS OF DESIGN OR INVENTION ARE RESERVED.

4

3

2

1