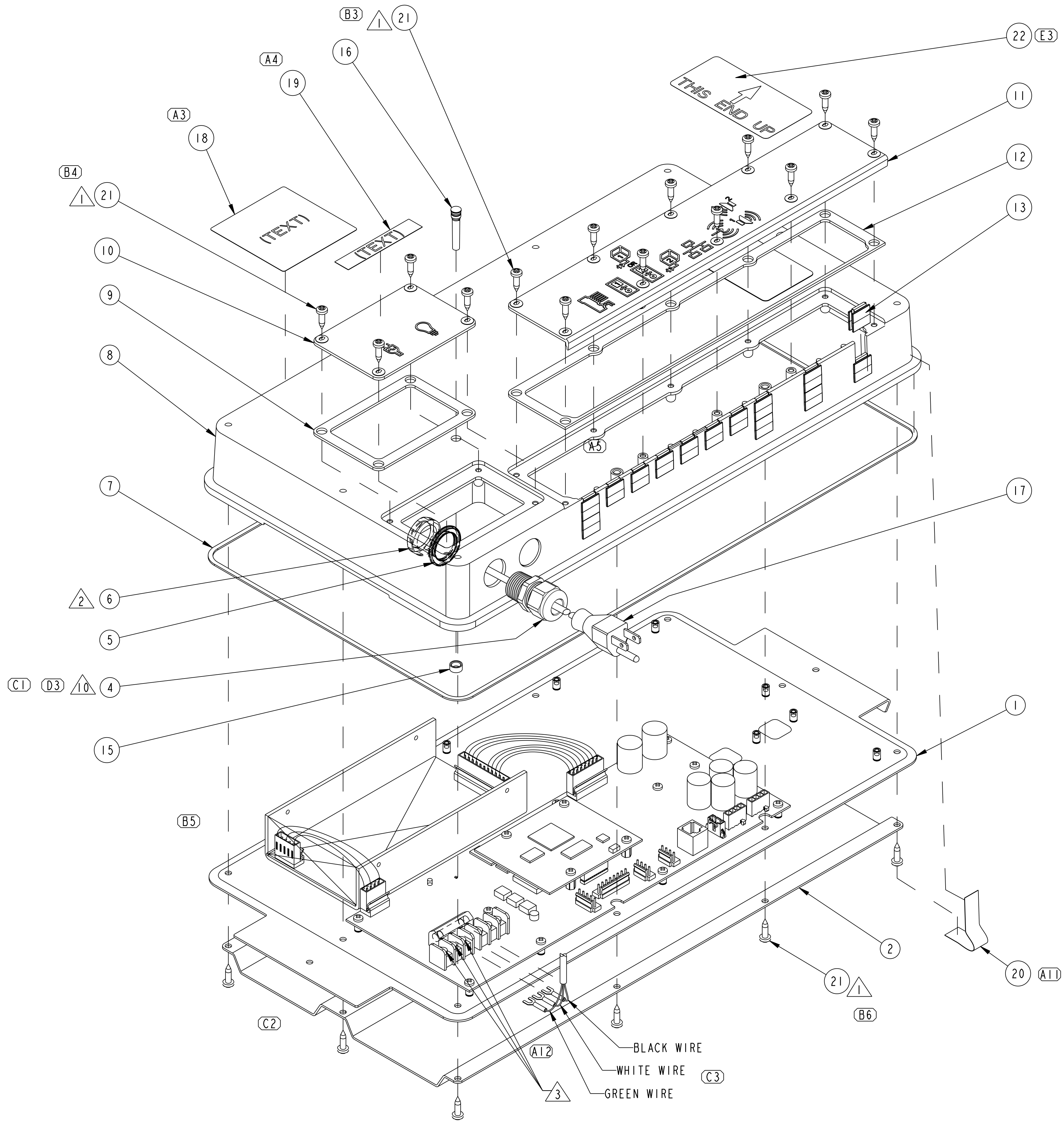


- NOTES:
- ESTIMATED WEIGHT: 6.03 LBS [2.74 KG]
  - ALL DIMENSIONS ARE IN INCHES [MM]. SECONDARY DIMENSIONS IN BRACKETS ARE REFERENCE ONLY. DO NOT USE SECONDARY DIMENSIONS FOR MANUFACTURING OR INSPECTION.

ALL DIMENSIONS IN: INCHES [MM]				DIMENSIONING AND TOLERANCING PER ASME Y14.5M-1994			
				TOLERANCES UNLESS OTHERWISE SPECIFIED	APPROVED	DATE	PLOT DATE
				.XXX ± 0.010	DON FREIER	02.16.07	03.12.08
				.XX ± 0.02	DRAWN	DATE	DATE
				.X ± 0.1	CMS	08.11.06	
				ANG ± 3.0	DO NOT SCALE DRAWING		
1-2	E	NS	SEE PCI P0801145	03.12.08	PRO/E		
2	D	JJB	SEE PCI P0706863	10.03.07	DWG		
2	C	CMS	SEE PCI #P0704480	06.20.07	THIRD ANGLE PROJECTION		
1,2	B	CMS	SEE PCI #P0703306	05.14.07	DESCRIPTION		
1,2	A	CMS	SEE PCI #P0701909	04.02.07	ASSEMBLY, ENCLOSURE		
1,2	-	CMS	SEE PCI #P0700594	02.16.07	ASSEMBLY, ENCLOSURE		
SHT	SYM	BY	DESCRIPTION	DATE	DWG. NO. 1065707		
DWG REVISION RECORD				SHT 1 of 2			



EXPLODED ISOMETRIC VIEW  
SCALE 0.625

ITEM	QTY.	PART NO.	DESCRIPTION
1	1	1070537	ASSEMBLY, BASE & PCB'S
2	1	1069052	HEATSINK
4	1	1068929	GROMMET, LTF 1/2"
5	1	1070876	SEAL, 1.24 OD X .82 ID X .125 THK
6	1	1068962	LOCK NUT, NLN 1/2" NPT
7	1	1068029	GASKET, FOAM, BASE
8	1	1065705	COVER, ENCLOSURE
9	1	1066496	GASKET, FOAM, POWER
10	1	1066495	COVER, POWER
11	1	1065822	COVER, ACCESSORY
12	1	1066497	GASKET, FOAM, ACCESSORY
13	14	1065703	GROMMET, WIRE
15	1	1072323	RETAINING RING, LIGHT PIPE
16	1	1072319	LIGHT PIPE
17	1	1069416	CSM, POWER CORD
18	1	1074749	LABEL, DTV MEDIA MODULE
19	1	1077807	LABEL, CAUTION, POWER
20	1	1077809	LABEL, NO SERVICEABLE
21	26	1081232	SCREW, #8 X .625, THRD FORM
22	1	1096725	LABEL, THIS END UP

NOTES:

- (B10) 1 TORQUE SCREW (ITEM 21) TO 10-15 IN-LBS [1,13-1,69 Nm].
- (D1) 2 TORQUE NUT (ITEM 6) TO 25-30 IN-LBS [2,82-3,39 Nm].
- (A8) 3 TORQUE TERMINAL SCREWS TO 12-13 IN-LBS [1,36-1,47 Nm].
- 4. ANY CHANGE IN DESIGN OR MANUFACTURING REQUIRES PRIOR APPROVAL FROM KOHLER GLOBAL FAUCETS DESIGN ENGINEERING.
- 5. CUSTOM SHOWER MEDIA ELEC CTRL DSN SPEC: H600\_207
- 6. CUSTOM SHOWER MEDIA ELEC CTRL PERF SPEC: H600\_208.
- 7. FOUNTAINHEAD PROTOCOL: H600\_206.
- (A9) 8. MUST MEET IPC-A-610 CLASS TWO.
- (A10) 9. ASSEMBLY MUST BE RoHS COMPLIANT.
- (D2) 3 10 ENCLOSURE STRAIN RELIEF (ITEM 4) MUST WITHSTAND A 35 LB. PULL TEST FROM ANY DIRECTION FOR 1 MINUTE. TORQUE STRAIN RELIEF NUT TO 35-40 IN-LBS. [3,95-4,52 Nm].
- (C4) 11. THERE ARE 3 CUSTOMER CHARACTERISTIC SYMBOLS ON THIS DRAWING.

ALL DIMENSIONS IN: INCHES [MM]				DIMENSIONING AND TOLERANCING PER ASME Y14.5M-1994			
TOLERANCES UNLESS OTHERWISE SPECIFIED				APPROVED	DATE	PLOT DATE	SCALE
				DON FREIER	02.16.07	03.12.08	1:1
DO NOT SCALE DRAWING				DRAWN	DATE	CHECKED	DATE
				CMS	08.11.06		
SEE SHEET #1				PRO/E		DWG SIZE	
				D		D	
THIS DRAWING IN DESIGN AND DETAILS IS THE PROPERTY OF KOHLER CO. AND MAY NOT BE USED EXCEPT IN CONNECTION WITH KOHLER CO. WORK. ALL RIGHTS OF DESIGN OR INVENTION ARE RESERVED.				THIRD ANGLE PROJECTION		ASSEMBLY NAME: 1065707	
				ASSEMBLY, ENCLOSURE		DESCRIPTION	
SHT				DWG. NO.		SHT	
1,2				1065707		2 of 2	

SHT	SYM	BY	DESCRIPTION	DATE