

EXHIBIT C

User Manual

HN-200 PCnet™-Home user manual

Apr. 1, 1999

Systems Software Engineering,

Networking Products Division,

(This page intentionally left blank)

Table of Contents:

Introduction and Prerequisites:

The PCnet-Home Release software supports the Windows 95 and Windows 98 operating systems. The installation procedure installs the following:

- necessary device drivers,
- networking services,
- print sharing services and
- Internet sharing application software.

It also allows the user to make local disks and printers sharable over the network.

Prerequisites:

1. Windows 95/98 CDROM:

If you had installed Windows 95/98 on your PC from a CD-ROM, during the PCnet-Home software installation process, Windows 95/98 may ask for the Windows 95/98 CD-ROM to copy networking services related files. Please keep the Windows 98 CD-ROM handy.

2. Prerequisites for Internet Sharing:

PCnet-Home installation allows you to share Internet access using a single Internet Service Provider (ISP).

PCnet-Home Installation in a Windows® 98 System

Please follow the following steps carefully to install the PCnet-Home based adapter and software in your Windows 98 system.

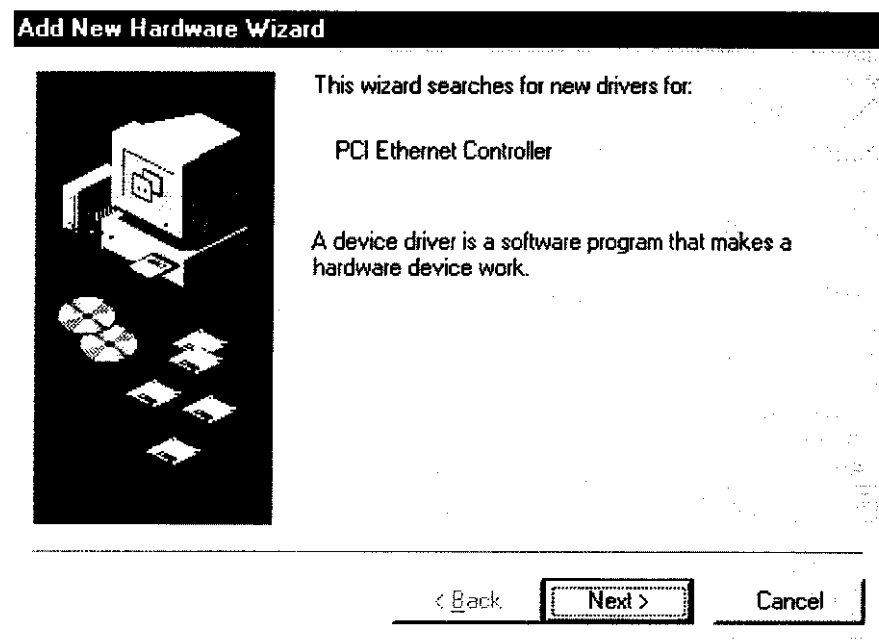
1. PCnet-Home based Adapter Installation:

With the machine turned off, place the AMD PCnet-Home device based adapter in one of the PCI slots and reboot your system.

2. Add New Hardware Wizard:

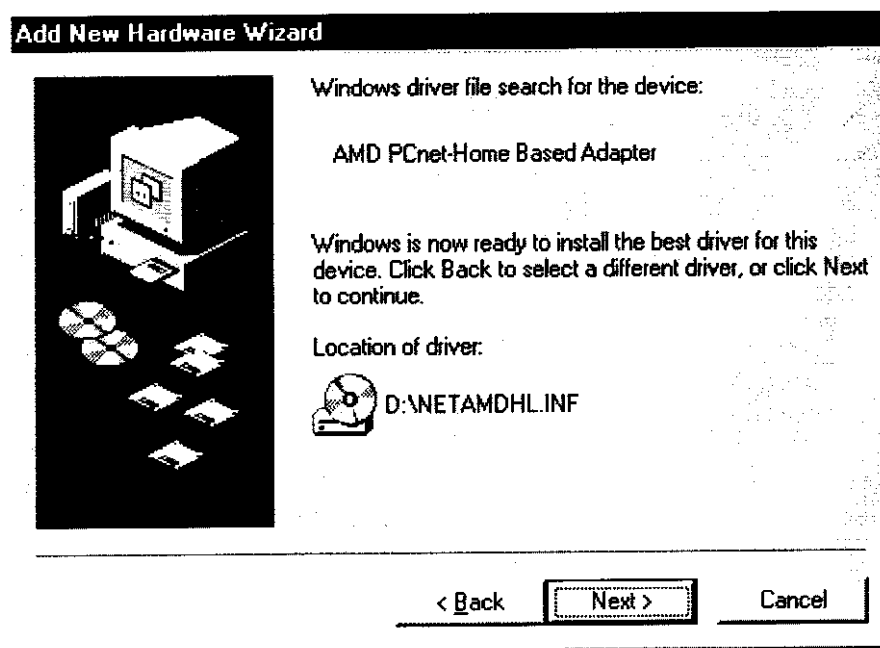
When Windows 98 boots up, it recognizes that a new hardware has been added to the system and brings up the “Add New Hardware Wizard” Window.

- Insert the AMD PCnet-Home CD in the CD-ROM drive.
- Click **Next** to start the driver installation process.



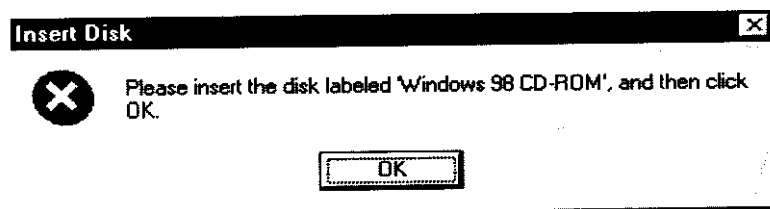
5. Add New Hardware Wizard:

The Wizard finds the driver for "AMD PCnet-Home Based Adapter" and reports that it is ready to install the best driver for this device. Choose Next

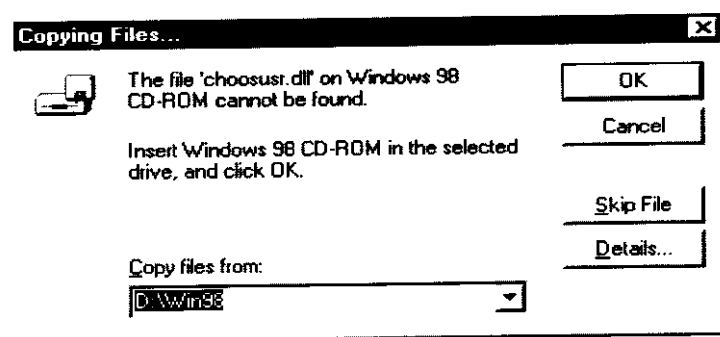


8. File Copy:

Windows 98 may ask you to provide with Windows 98 CD-ROM or a path to the Windows 98 install (CAB) files on your computer. This is required to install the Windows 98 networking services.



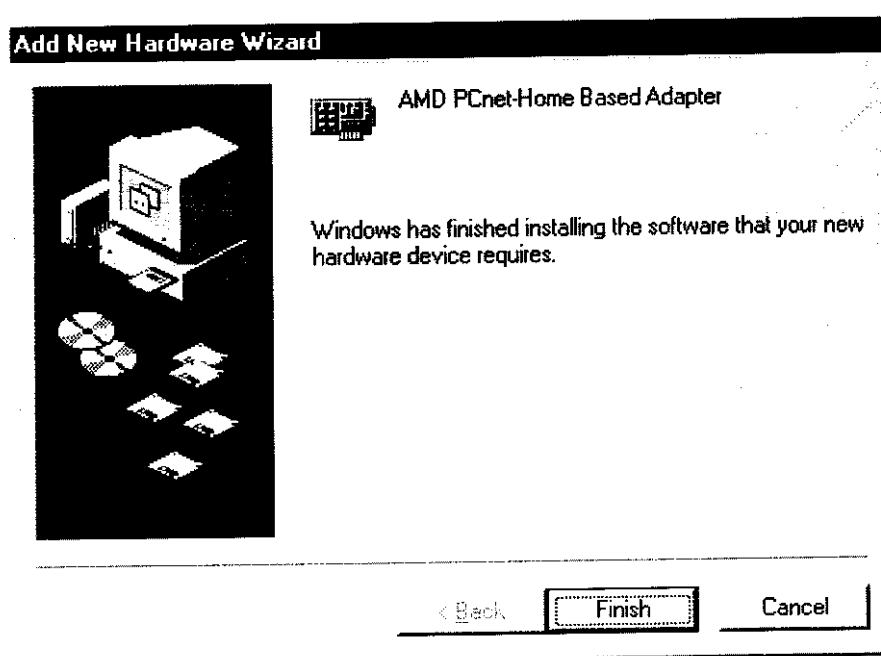
If asked for a path, please specify the correct path to Windows 95 install files on your computer hard disk or the Windows 98 CD-ROM.



Note: At this point Windows 98 may take a few minutes to copy all the necessary files. *Please wait for the next Dialog Box to appear.*

9. Device Driver Installation Completed

The user is informed that the PCnet-Home Based Adapter Installation is complete. Click **Finish**.



11. File and Printer Sharing:

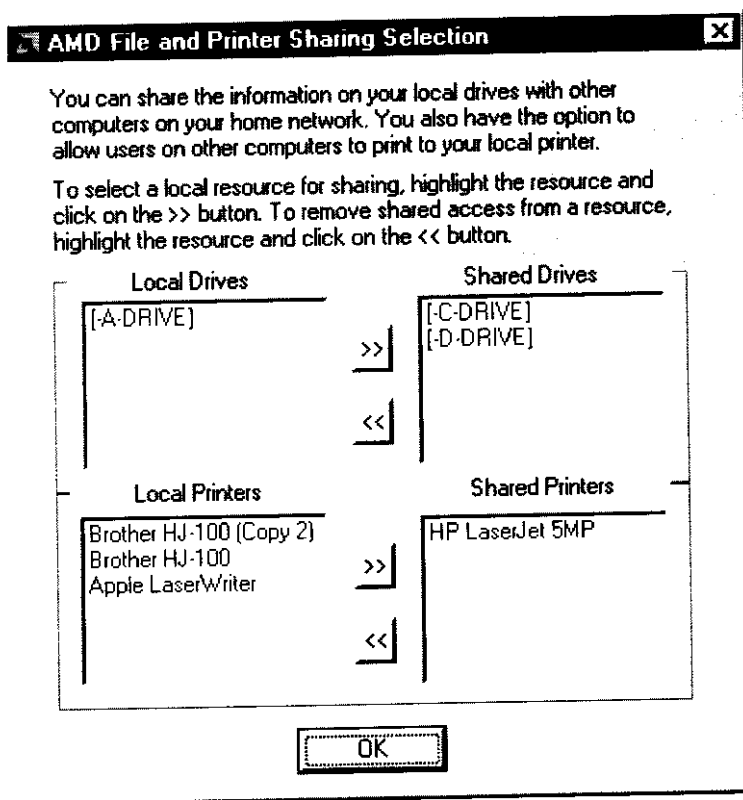
The installation process will now prompt you to select the local disk drives and printers that you may like to share over the Home network. All local drives and printers are automatically found and displayed by the installation wizard in the following dialog box that will display on your screen.

Choose the drives to share for File sharing.

- To choose, highlight the drive letter by clicking on it and click the >> button. This will place the selected drive letter in the shared drives list.
- To remove a drive from the shared drives list, highlight the drive letter by clicking on it and then click the << button.

Choose the printers to share for Printer sharing.

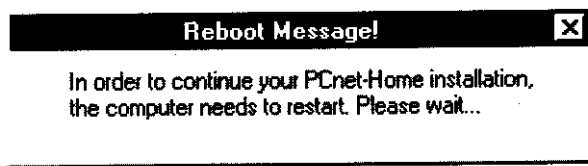
- To choose, highlight the printer name by clicking on it and click the >> button. This will place the selected printer in the shared printers list.
- To remove a printer from the shared printers list, highlight the printer name by clicking on it and then click the << button.



If you are configured to start an Internet sharing application automatically, this process will start now. Please see the section on *Customizing Your Installation Options* for details on how to setup your Internet sharing application to start automatically.

13. Reboot Message

At this time, your computer may restart.



After the restart, the WinGate Internet Sharing installation program will take over.

14. Internet Sharing Installation Program:

The AMD Install program can be customized to use any of the Internet sharing programs in the market (see the section on *Customizing Your Installation Options*). The Demo CD ships with a Beta version of WinGate 3.0 (from Deerfield.Com), one of the leading Internet sharing programs in the market.

- To install **WinGate**, click **Next** to continue. Follow the on-screen directions to install WinGate.

License Key:

Following is a special evaluation license for the WinGate program. License key is only required if you setup WinGate as a **Server**.

License Name: AMD OEM Eval

License Number: 5B233EFA0901E2D313BE96CB

15. Using WinGate:

If you have the Internet connection already configured on the Server/Gateway machine, all you need to do to access Internet from a client machine is to open a browser or other Internet application and you will be seamlessly connected to the Internet.

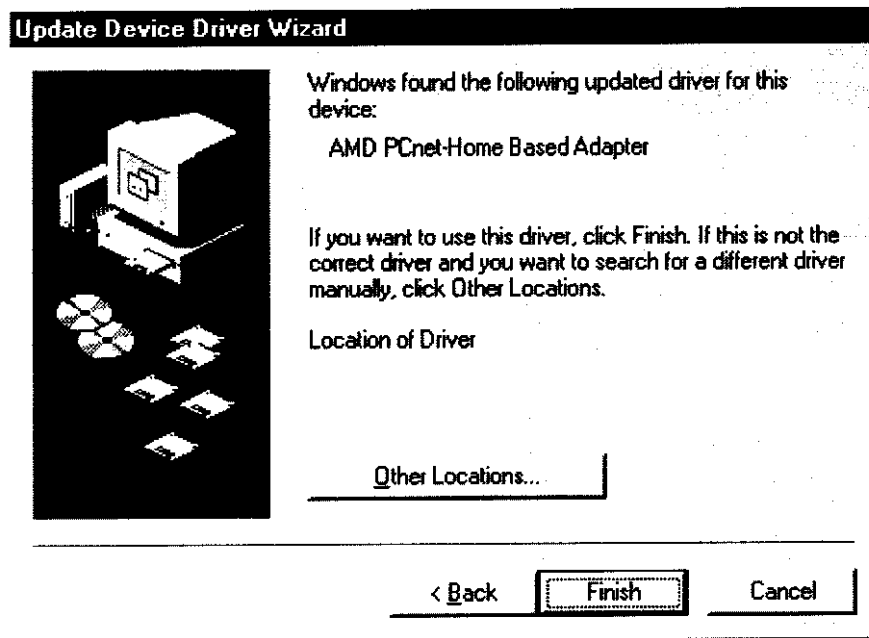
16. WinGate Help:

Further information for WinGate can be found in WinGate Help file.

19. Update Device Driver Wizard:

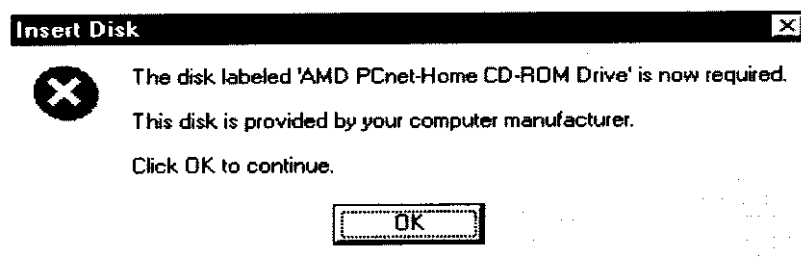
The "Update Device Driver Wizard" finds the following updated driver for the adapter: AMD PCnet-Home Based Adapter.

- Choose **Finish**



20. Insert PCnet-Home CDROM

Windows 95 will prompt you to insert the AMD PCnet-Home CDROM.

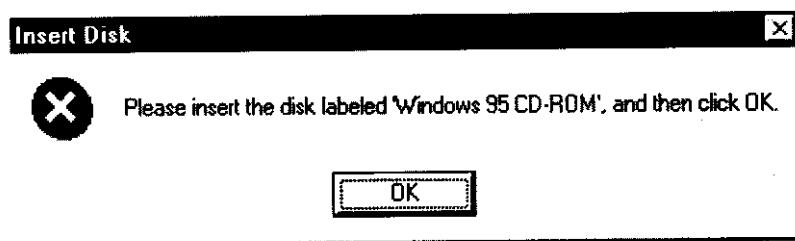


Click OK after ensuring that the CDROM is in the CDROM drive.

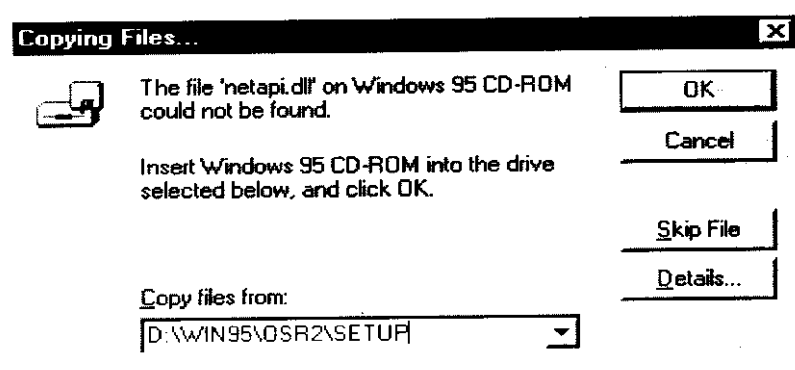
If these services are not already installed, you will be prompted to insert the Windows 98 CDROM as indicated in the next step. If the services are already installed on your computer, the installation procedure will skip next step.

24. Windows 95 CD-ROM:

Windows 95 may ask you to provide with Windows 95 CD-ROM or a path to the Windows 95 install (CAB) files on your computer. This is required to install the Windows 95 networking services.



- If asked for a path, please specify the correct path to Windows 95 install files.

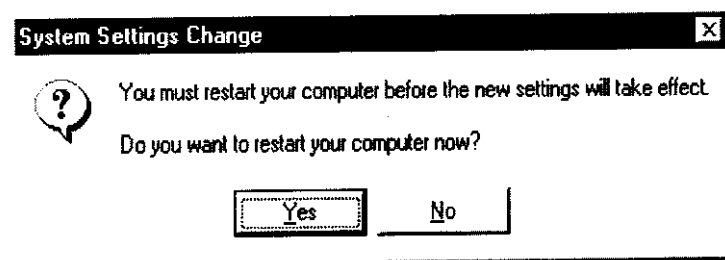


Note: At this point Windows 95 may take a few minutes to copy all the necessary files. *Please wait for the next Dialog Box to appear.*

25. System Restart:

The user will be prompted to restart the system.

- Select Yes, to restart the system.

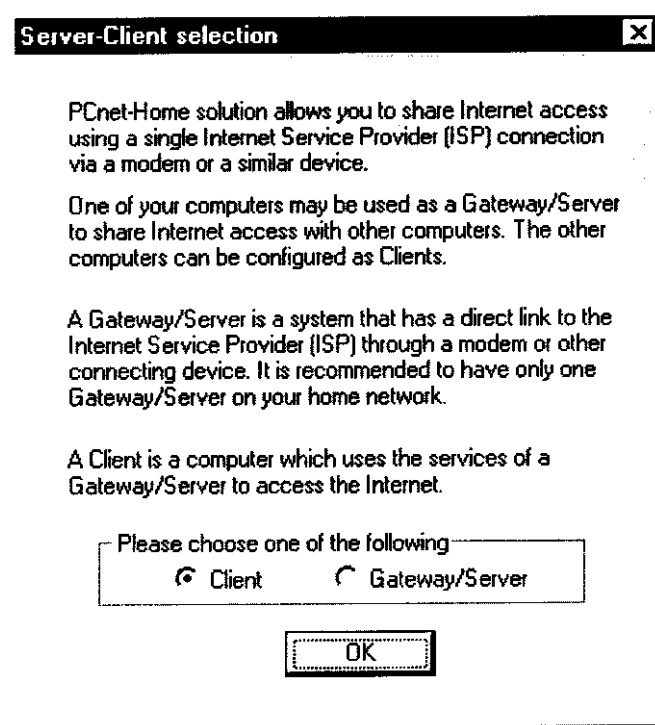


If you are using the default setup configuration, the WinGate Internet sharing application will be installed on your system automatically.

To correctly configure the system for WinGate installation, please check the pre-requisites in the Introduction to this document.

27. Server-Client Selection for WinGate Software Installation:

The user has the option to configure his/her system either as a Gateway/Server or a Client for Internet sharing. A Gateway/Server is a machine with an Internet connection configured through a Modem or other connection medium. A Client is a system accessing the Internet through a Gateway/Server, defined as above.



If you are installing as a Client, click OK. Otherwise, click on the Gateway/Server option and then click OK.

Note: For simpler configuration, it is highly recommended that you have no more than one Gateway/Server on your home network.

28. Restart Computer

At this time, your computer may restart. The reboot is only necessary in certain cases. Depending on your setup, you may not be required to reboot. In that case, proceed to step 13.

PCnet-Home Advanced Driver Features:

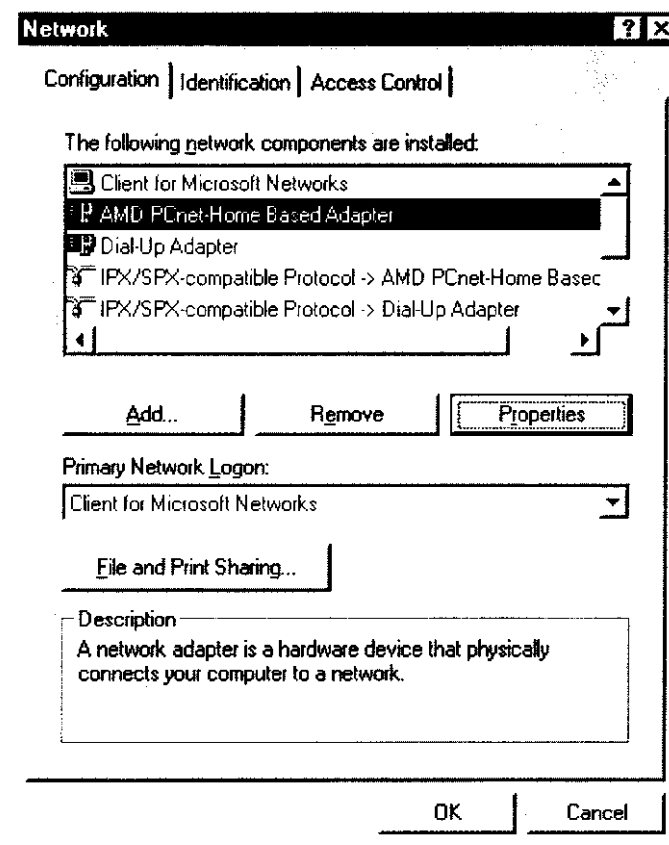
The **AMD PCnet-Home** drivers support the following features. For most users, default settings will be appropriate. The advanced features are for diagnostic purposes and may be appropriate for some users.

1. Network Setup:

- To access Network Setup, open **My Computer** icon on your desktop.
- Once the **My Computer** icon is open, double click on **Control Panel** folder to open it.
- In the Control Panel, double click on **Network** icon to open the Network Setup program.

1. Network Setup:

- To access driver properties, highlight **AMD PCnet-Home Based Adapter** and click on **Properties**.



Advanced Properties:

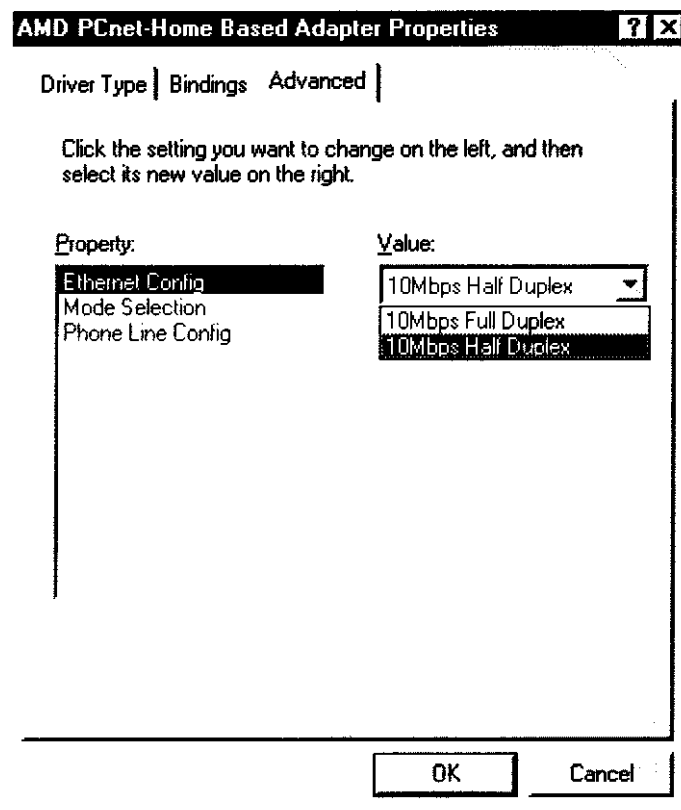
Ethernet Configuration:

This option allows the user to force the speed/duplex mode of choice on the Ethernet PHY. The **Ethernet Config** option works in conjunction with the **Mode selection** option, and is valid only if:

- The **Mode Selection** is set to **10BASE-T-only PHY** or **10/100BASE-TX PHY**
Or
- The **Mode Selection** is set to **Auto Detect** and there is a valid link on the **Ethernet port**

The choices for **Ethernet Configuration** are:

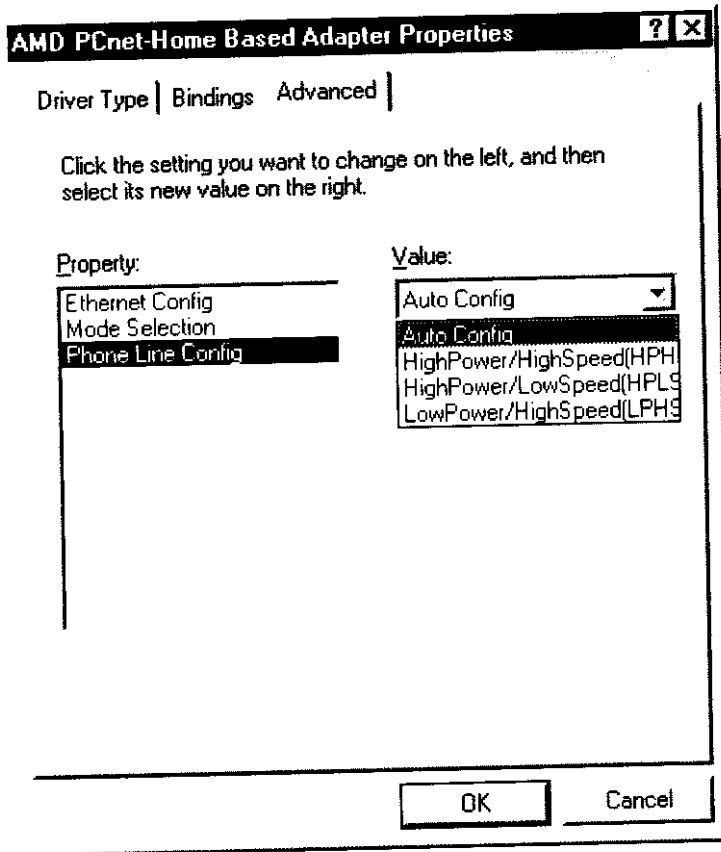
- **10Mbps Half Duplex** – sets the mode to 10Mbps Half Duplex Ethernet – (Default Option)
- **10Mbps Full Duplex** – sets the mode to 10Mbps Full Duplex Ethernet



Phone Line Configuration:

Phone Line Config option is used to select the mode that the **Phone Line** port is going to operate. The selection is valid only if:

- in **Mode Selection** option, Phone Line is selected,
- Or**
- in **Mode Selection** option, Auto Detect is selected and Phone Line is the active link.



The choices for this option are:

- **Auto Config (Default Option)** Configures the Phone Line PHY with Low power/High speed (LPHS). It monitors the PHY to dynamically reconfigure it, if necessary. It can automatically reconfigure to High Power/High Speed (HPHS) or High Power/Low Speed (HPLS).
- **LowPower/HighSpeed (LPHS)**
Configures the Phone Line PHY with low power and high speed (1 Mb/Sec). It does not monitor the PHY.
- **HighPower/HighSpeed (HPHS)**
Configures the Phone Line PHY with high power and high speed (1Mb/Sec). It does not monitor the PHY.
- **HighPower/LowSpeed (HPLS)**
Configures the Phone Line PHY with high power and lowers the data rate to 700 kb/Sec. It does not monitor the PHY.

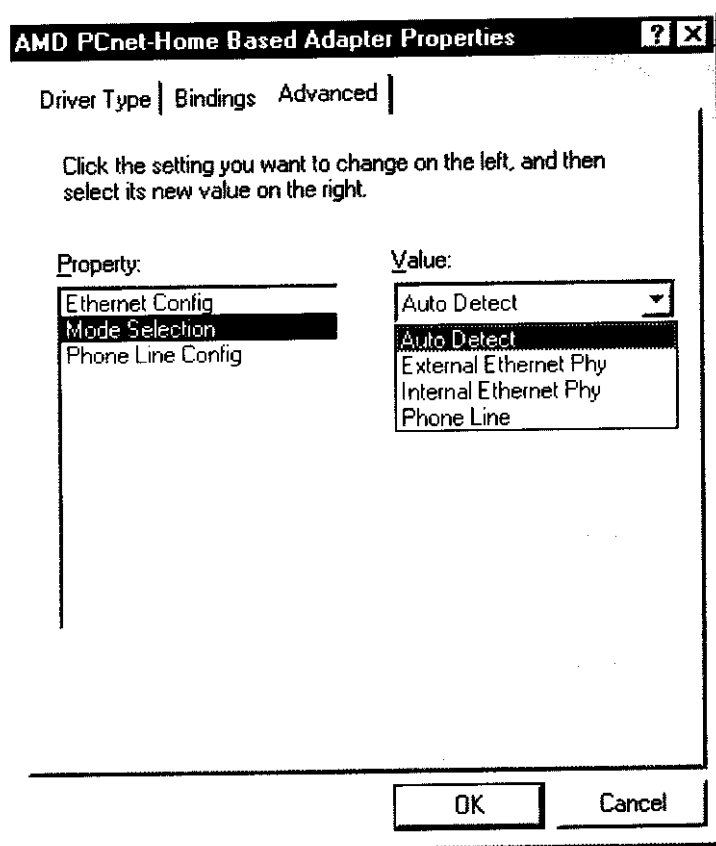
Mode Selection:

Mode Selection option allows the user to force a connection on one of the physical ports, in case there are multiple ports present. The choices for **Mode Selection** are:

- **Auto Detect (default option).** Driver will automatically search and activate a **PHY** where a link can be established. Search sequence is performed in the following order.
 - 10/100BASE-TX PHY, if present and active,
 - 10BASE-T PHY, if present and active,
 - Phone Line

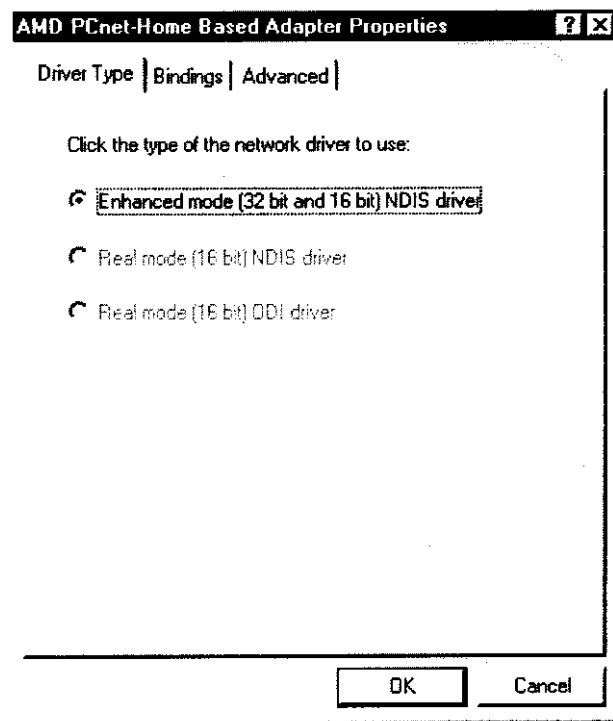
If none of the PHYs has an active link, then Phone Line will be activated by default.

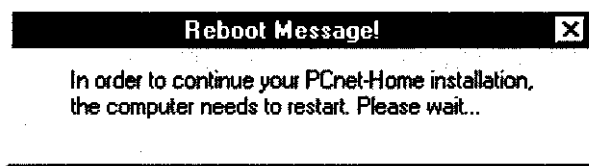
- **10/100BASE-TX Ethernet**
This option forces the device to choose a **10/100BASE-TX Ethernet** if one is present.
- **10BASE-T Ethernet**
This option forces the device to choose the **10BASE-T Ethernet** if one is present.
- **Phone Line**
This option forces the device to choose the **Phone Line** for data communication.



3. AMD PCnet-Home Based Adapter Properties:

AMD PCnet-Home Based Adapter Properties dialog box opens up. Click on **Advanced** to view the advanced properties.





After the restart, the WinGate Internet Sharing installation program will take over.

29. Internet Sharing Installation Program:

The AMD Install program can be customized to use any of the Internet sharing programs in the market (see the section on *Customizing Your Installation Options*). The Demo CD ships with a Beta version of WinGate 3.0 (from Deerfield.Com), one of the leading Internet sharing programs in the market.

- To install **WinGate**, click **Next** to continue. Follow on-screen directions to install WinGate.

License Key:

Following is a special evaluation license for the WinGate program. License is only required if you choose the Server/Gateway option during the WinGate Installation.

License Name: AMD OEM Eval

License Number: 5B233EFA0901E2D313BE96CB

30. Using WinGate:

If you have the Internet connection already configured on the Server/Gateway machine, all you need to do to access Internet from a client machine is to open a browser or other Internet application and you will be seamlessly connected to the Internet.

31. WinGate Help:

Further information for WinGate can be found in WinGate Help file.

26. File and Printer Sharing:

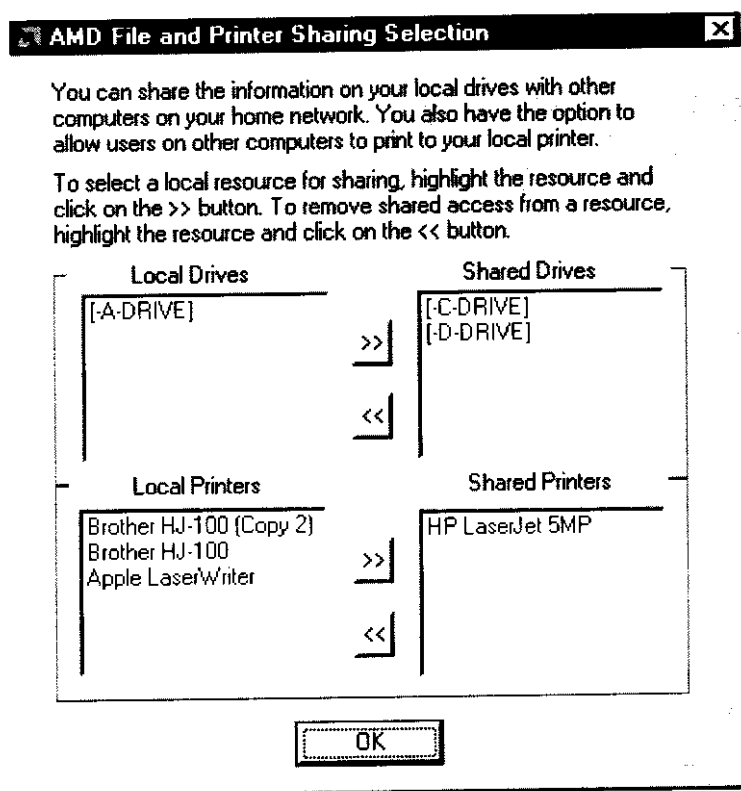
The installation process will now prompt you to select the local disk drives and printers that you may like to share over the Home network. All local drives and printers are automatically found and displayed by the installation wizard in the following dialog box that will display on your screen.

Choose the drives to share for File sharing.

- To choose, highlight the drive letter by clicking on it and click the >> button. This will place the selected drive letter in the shared drives list.
- To remove a drive from the shared drives list, highlight the drive letter by clicking on it and then click the << button.

Choose the printers to share for Printer sharing.

- To choose, highlight the printer name by clicking on it and click the >> button. This will place the selected printer in the shared printers list.
- To remove a printer from the shared printers list, highlight the printer name by clicking on it and then click the << button.

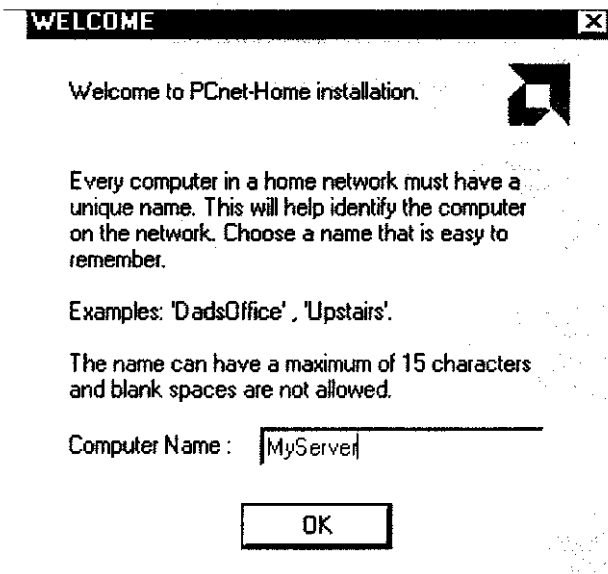
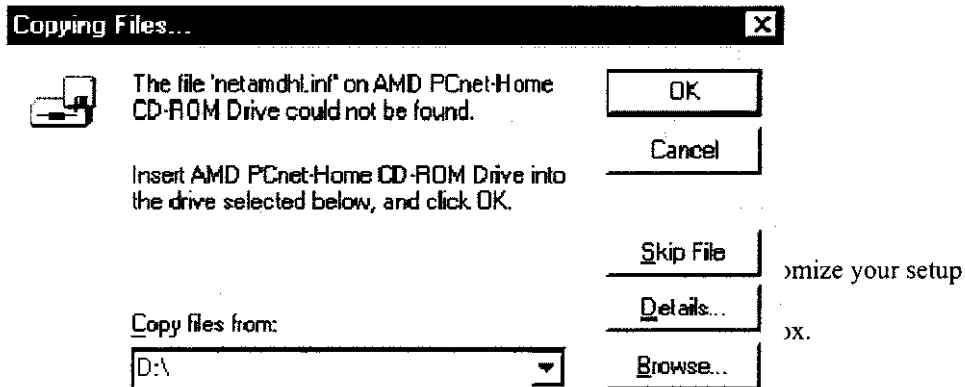


If you are configured to start an Internet sharing application automatically, this process will start now. Please see the section on *Customizing Your Installation Options* for details on how to setup your Internet sharing application to start automatically.

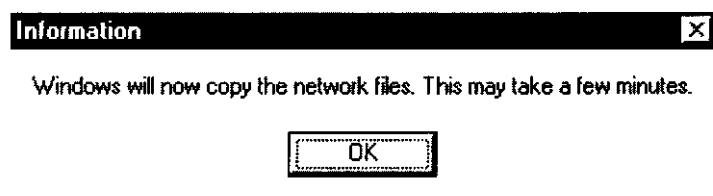
21. Copy Files

In **Copy Files From** choose **D:** where **D:** is your CD-ROM device with the AMD PCnet-Home CD loaded.

22



23. Information:



The installation process will now check if you have networking and print services already installed on your system.

Windows may take a few minutes to copy all the necessary files. Please do not cancel the Installation process.

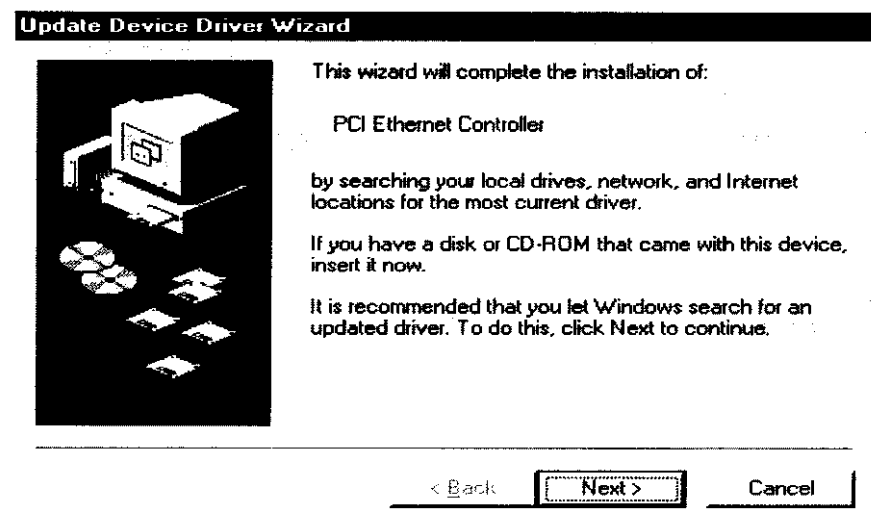
PCnet-Home Installation in a Windows 95® System

17. Adapter Installation:

With the machine turned off, place the PCnet-Home device based adapter in one of the PCI slots and reboot your system.

18. Windows Boot:

When Windows 95 boots up, it recognizes that a new hardware has been added to the system and brings up the "Update Device Driver Wizard" Window.



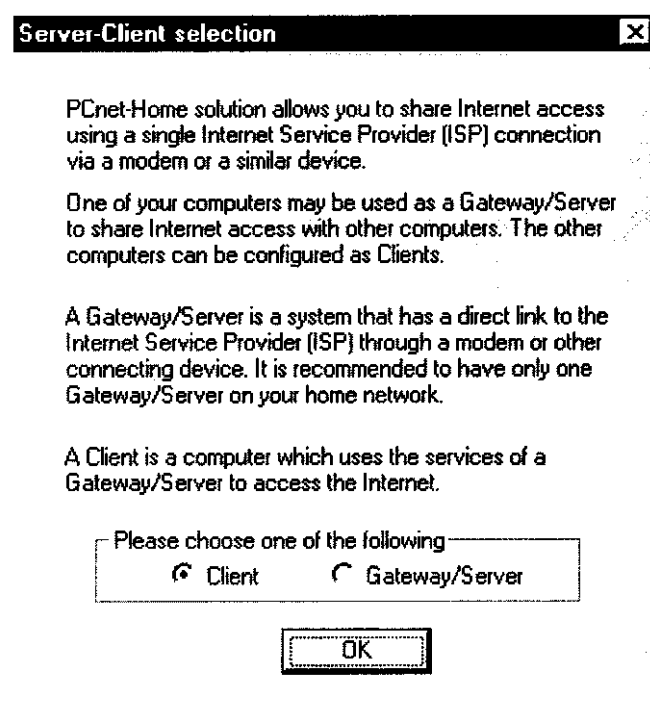
- Insert the AMD PCnet-Home CD-ROM in your CD-Drive
- Click **Next**.

If you are using the default setup configuration, the WinGate Internet sharing application will be installed on your system automatically.

To correctly configure the system for WinGate installation, please check the pre-requisites in the Introduction to this document.

12. Server-Client Selection for WinGate Software Installation:

The user has the option to configure his/her system either as a Gateway/Server or a Client for Internet sharing. A Gateway/Server is a machine with an Internet connection configured through a Modem or other connection medium. A Client is a system accessing the Internet through a Gateway/Server, defined as above.



- If you are installing as a Client, click OK. Otherwise, click on the Gateway/Server option and then click OK.

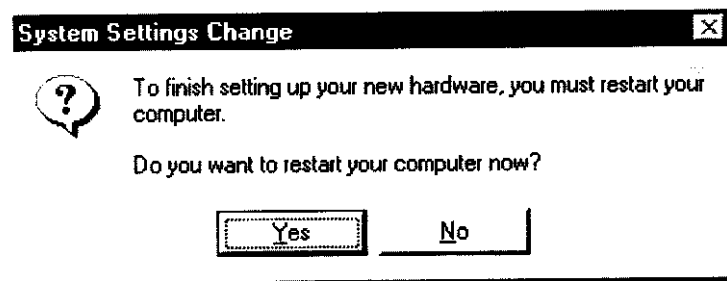
Note: For simpler configuration, it is recommended that you have no more than one computer configured as Gateway/Server on your home network.

- If you chose **Server**, proceed to step 13.
- If you chose **Client**, proceed to step 14.

Note: Again at this point Windows 98 may take a few minutes to copy all the necessary files. *Please wait for the next Dialog Box to appear.*

10. System Restart:

Ensure that the AMD PCnet-Home CD is in your CD-ROM drive.
The user will be prompted to restart the system. Select **Yes** to restart the system.

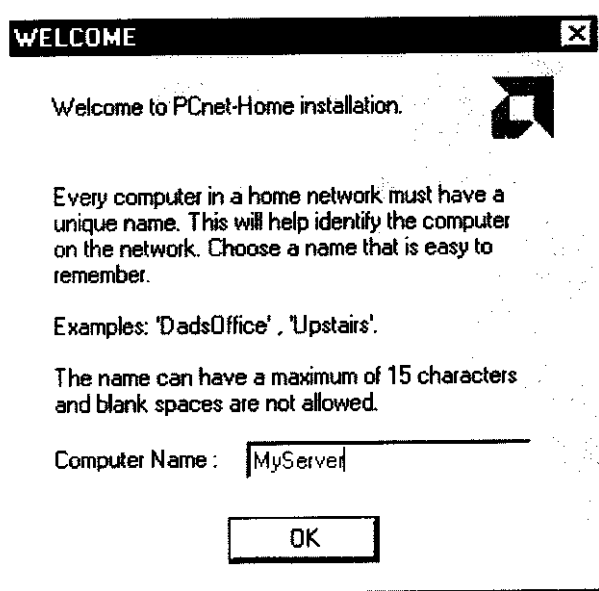


The Installation process will now continue to enable file sharing, printer sharing and Internet sharing.

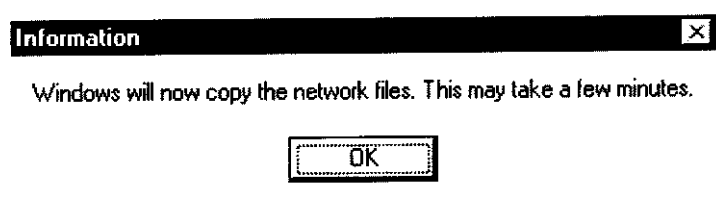
6. AMD EZInstallation Wizard:

The AMD EZInstallation Wizard will provide you with options to customize your setup.

Please select a Computer Name as suggested by the Welcome dialog box



7. Information:



The installation process will now check if you have networking and print services already installed on your system.

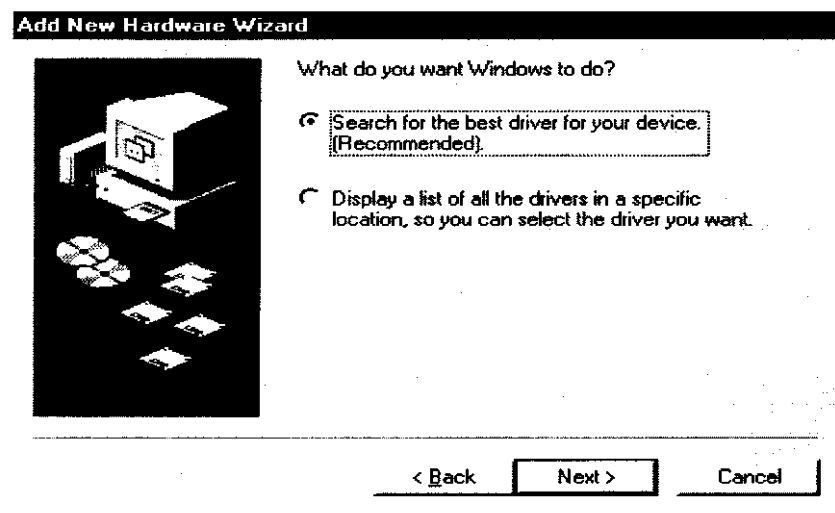
Windows may take a few minutes to copy all the necessary files. Please do not cancel the Installation process.

If these services are not already installed, you will be prompted to insert the Windows 98 CDROM as indicated in the next step. If the services are already installed on your computer, the installation procedure will skip next step.

3. Add New Hardware Wizard:

The Wizard gives you two options:

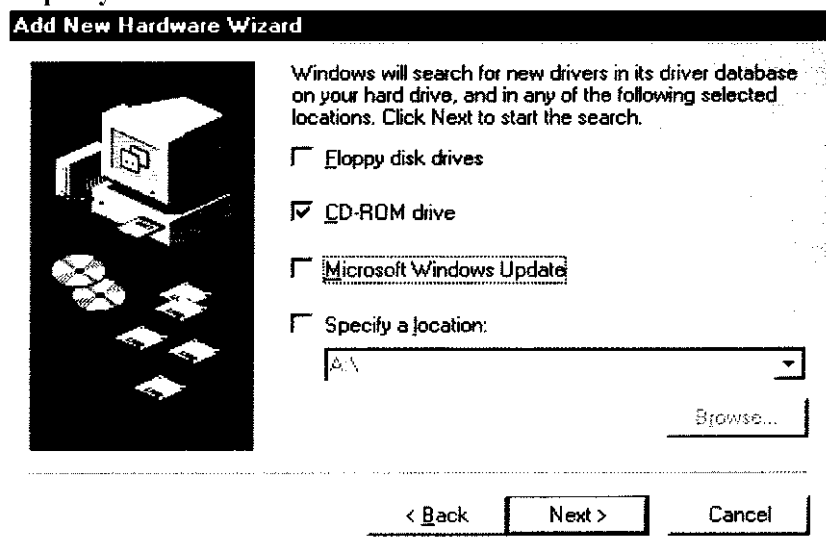
- ☒ Search for the best driver for your device (Recommended).
 - ☐ Display a list of all the drivers in a specific location so you can select the driver you want.
- Choose the default (first option) and click Next.



4. Add New Hardware Wizard:

The Wizard gives you the following location options:

- ☐ Floppy disk drives
- ☒ CD-ROM drive
- ☐ Microsoft Windows Update
- ☐ Specify a location



- Choose CD-ROM drive only.

One of your computers may be used as a Gateway/Server to share Internet access with other computers. The other computers can be configured as clients.

A Gateway/Server is a computer with a direct connection to the Internet through a modem or other connecting device.

A client is a computer which uses the services of a Gateway/Server to access the Internet.

Following are the prerequisites for Internet sharing:

1. You should have a valid ISP setup on the machine acting as the Server/Gateway.
2. It is recommended to install and configure the PCnet-Home Based Adapter on the Server/Gateway first.

Typical Home Network Configuration Using Phone Line

The following figure depicts a typical network setup using the PCnet-Home solution.

The left side of the picture depicts a Home Computer used as a Server/Gateway. A Server/Gateway is defined as a system that has an ISP account setup and has a communication device like a modem installed on it for connection to the Internet. The Server/Gateway system is connected to the RJ11 jack on the wall of the room where the computer is located.

The right side of the picture depicts two clients daisy chained together using the PCnet-Home adapter. A Client is defined as a computer that gets Internet access using the services of the Server/Gateway. Client 1 is connected to the RJ11 jack on the wall of the room where these computers are located.

