

## TROUBLESHOOTING

### TAKING CARE OF YOUR RECHARGEABLE BATTERIES

- Ensure that you fully charge your batteries for 10 hrs before their first use.
- To maintain maximum battery life it is recommended that you fully discharge your batteries periodically. Battery performance can be diminished by leaving the batteries constantly charging on the charging cradle. If your Parent Unit is no in use, please turn it off.
- Inadequate battery power can impair the performance of your monitor. If you are not happy with the performance of your Parent Unit/Monitor, please replace the rechargeable batteries (3 x NIMH Rechargeable batteries).
- It is advisable to change the batteries every 6 months.

### FALSE ALARMS

- Turn OFF the Nursery Unit.
- Verify the connection between Sensor Pad and Nursery Unit. Unplug and reconnect the cord.
- Make sure there is no bedding between mattress and Sensor Pad.
- If the crib has a spring or slat base, place a hardboard between the crib base and the Sensor Pad measuring at least 33 x 33 cm and 6 mm thick.
- Make sure Sensor Pad is positioned as described under the setup requirements. Sensitivity may need to be adjusted, refer to step 5.1.

### ALARM WILL NOT SOUND

- Avoid contact with the crib when the monitor is ON.
- Place crib near a solid supporting wall to avoid Sensor Pad from detecting movement from outside the crib.
- You may need to decrease the sensitivity, refer to step 5.1.

### NO SOUND IS BEING TRANSMITTED

- Bring Parent Unit closer to Nursery Unit.
- Check/replace batteries or recharge Parent Unit.
- Check connections or change to another electrical outlet.
- Ensure both units are ON.
- Ensure mains supply units are activated.
- Check on the top bar of the Parent Unit to see if the Monitor is on "MUTE" instead of "ON". Refer to step 6.11.

### NURSERY UNIT POWER ON INDICATOR (GREEN LIGHT) DOES NOT LIGHT UP

- Check connections or change to another electrical outlet.
- Push and hold the left 'wing' for 2 seconds to turn the Nursery Unit ON.

### WEAK RECEPTION

- Bring units closer together.
- Change the position of one or both units.
- Place units on a flat surface away from baby's reach.
- Replace the batteries or recharge Parent Unit.

## STATIC, DISTORTION, INTERFERENCES (FROM OTHER MONITORS, WIRELESS PHONES, WALKIE-TALKIES, ETC...)

- Rotate Parent Unit or move it away from source of interference.

## FEEDBACK (LOUD NOISES EMITTED FROM THE PARENT UNIT)

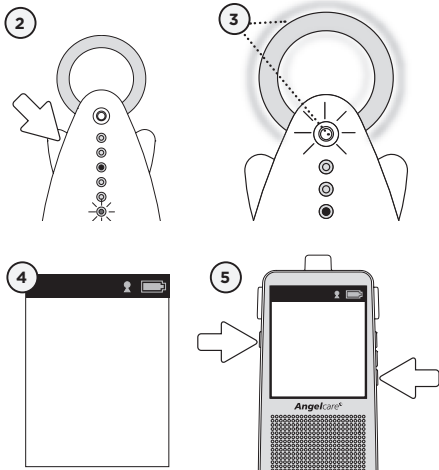
- Move units farther apart (at least 3 meters).
- Decrease volume on Parent Unit.

## THE PARENT UNIT SCREEN IS BLACK (PARENT UNIT IS OFF)

- Turn the Parent Unit back ON by pushing and holding the power button (left 'wing') for 2 seconds.
- Replace the batteries or recharge Parent Unit.

## LOSS OF CONNECTIVITY

In the case of loss connectivity, the first step is to bring the Parent Unit and the Nursery Unit closer together and make sure that both units are ON to restore the connection. If there is still no connection and no out of range warning after the above has been done, then and only then should the re-connection procedure below be done.



### NOTE:

By doing the re-connection procedure you will reset the monitoring system back to original presets.

### Re-Connection procedure:

- 1) Make sure both the Nursery Unit and the Parent Unit are OFF.
- 2) Turn ON the Nursery Unit by pressing the left wing.  
: The power light will turn on.
- 3) Press and release the left wing 4 times until the Angel eye light and night light blinks.
- 4) Turn ON the Parent Unit until the screen displays.
- 5) Press and hold the Parent Unit Talk button and then press and release the Power button.

: The Parent Unit screen should then show the video display - this would mean that the units are now connected.

## LIMITED WARRANTY

Angelcare® warrants to the original owner of this product that Angelcare® rechargeable video, movement and sound monitor (model AC1100) is free from any material and workmanship defects, for a period of one (1) year from the date of the original purchase. If this monitoring system fails to function properly when used as directed under normal conditions within the two year period, Angelcare® will either repair or replace the product, at our discretion, free of charge. Please contact your distributor.

The product must be accompanied by a proof of purchase, either a bill of sale or other proof that the monitoring system is within the warranty period. Angelcare® will bear the cost of repairing or replacing the product and shipping it back to you.

**This warranty does not apply to a product which has been damaged as a result of improper maintenance, an accident, improper voltage supply or any other form of misuse. The warranty is also void if the owner repairs or modifies the product in any way. Angelcare® is not liable for any incidental or consequential damages with regard to this product. The warranty also excludes any liability other than what is stated above. No other warranty is given.**

This warranty does not cover products and accessories which are not Angelcare-branded, or any problems that result from usage that is not in accordance with product instructions, failure to follow the product instructions, or problems caused by using accessories, parts or components not supplied by Angelcare.

LEGAL RIGHTS VARY FROM COUNTRY TO COUNTRY. SOME COUNTRIES DO NOT ALLOW THE EXCLUSION OR LIMITATION OF INCIDENTAL OR CONSEQUENTIAL DAMAGES, SO THE ABOVE LIMITATIONS MAY NOT APPLY TO YOU.

WE ARE NOT IN ANY WAY RESPONSIBLE FOR ANY OUTCOME RESULTING FROM THE USE OF THIS PRODUCT.

## IMPORTANT!

This Angelcare® monitor is a personal care product. Please do not return this product to the store. If you have questions or need help, please call your distributor before returning this product.

## TECHNICAL SPECIFICATIONS

### Range:

Open field (Open area without obstructions): up to 200 meters.

### Number of Channels:

USA/Canada: 19 channels.

Europe: 64 Channels.

### Power Supply:

Three AAA alkaline batteries (not included) or 7.5V DC Adapter for Nursery Unit.

Three AAA rechargeable batteries and 7.5V DC adapter for Charging Base for the Parent Unit.

**Caution:** To reduce the risk of electric shock, do not expose this product to rain or moisture.

Danger of explosion if batteries are incorrectly replaced. The included Batteries are 3 AAA NIMH rechargeable batteries, manufactured by GPI INTERNATIONAL LIMITED (GN60AAAHC, 1.2V 600mAh) or by HIGHPOWER TECHNOLOGY CO., LTD (HFR-44AAAJ600, 1.2V 600mAh).

**They may only be replaced by 3 AAA NIMH rechargeable batteries.**

### Batteries:

- DO NOT mix old and new batteries.
- DO NOT mix alkaline standard (carbon-zinc), or rechargeable (NI-CD, NIMH, etc) batteries.

### Transmission:

Data transmission between the Parent Unit and Nursery Unit is made on the 2.4GHz frequency.

Hereby, Angelcare Monitors Inc, declares this baby monitor is in compliance with the essential requirements and other relevant provisions of Directive 1999/5/EC.

The EU declaration of conformity can be obtained at: [www.angelcarebaby.com](http://www.angelcarebaby.com)



### PROTECT THE ENVIRONMENT

This electronic equipment contains reusable material and must not be disposed with domestic waste. Please take it to a collecting point for electric and electronic equipment (ask your local authorities for details).

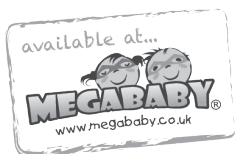
### ErP COMPLIANCE

SOUTH AFRICA-BRAZIL-ECUADOR-EUROPEAN UNION  
Use only Angelcare® Brand power supply-model number T07505V001

GERMANY  
Use only Angelcare® Brand power supply-model number T07505F002

AUSTRALIA  
Use only Angelcare® brand power supply-model number T07505S002

NORTH AMERICA  
Use only Angelcare® brand power supply-model number T07505U002



## Also available at Megababy...



**Nappy Disposal System**  
The Angelcare Nappy Disposal System is a convenient and hygienic way of disposing of dirty nappies. Featuring Air-Seal technology designed to keep bad smells at bay, this simple-to-use system makes for a happier, more fragrant home. It also makes a fantastic family bathroom bin when the nappy days are over.

including free first cassette!



**HYGIENIC PUSH & LOCK**  
Simply push nappy in to lock smells in



**AIR SEAL**  
The advanced multi-layer film provides an effective odour barrier



**100% COMPATIBILITY**  
All Angelcare cassettes are suitable for all Angelcare Nappy Disposal Systems



**EASY-TO-USE REFILL**  
Each (refill) cassette includes enough bags to last 1 month



**ENVIRONMENTALLY FRIENDLIER**  
Uses up to 4 times less plastic than other systems



**ONE-HANDED OPERATION**  
No difficult twisting required to use



**SAFE AND SIMPLE**  
The cutting mechanism is inside the nappy bin



**EASY TO EMPTY**  
Remove it just like a normal bin liner (approximately once a week)



For latest prices on all Angelcare products visit:  
**megababy.co.uk**



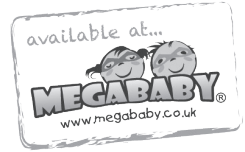
**Refill Cassettes**  
The Angelcare refill cassettes help to provide a convenient and hygienic way of disposing of dirty nappies. A pack of 3 refill cassettes is normally enough for up to 3 months of usage.

Buy Refill Cassettes online at  
**www.megababy.co.uk**



# Angelcare®

FOR YOUR PEACE OF MIND



## Also available at Megababy...

### Angelcare Soft-Touch Bath Support

The Soft-Touch Bath Support provides optimal comfort and safety for your baby as it is placed directly in the bath. Its unique design combines safe, sturdy sides and an angled area made from special soft material for your baby.

The soft TPE material does not only mould comfortably around your baby, but also takes up the bath water's temperature very quickly, which makes your baby feel warm and safe. Suitable from birth.

**PLEASE NEVER LEAVE YOUR CHILD UNATTENDED WHILE BATHING.**

**RSP £24.99**

soft material absorbs water temperature



#### DURABLE & LIGHTWEIGHT

Bath Support has a layer of soft TPE material, which warms very quickly to baby's body temperature and bath water.



#### HYGIENIC & MOULD-RESISTANT

The mesh material allows water to drain easily from the bath support and dry quickly.



#### USED DIRECTLY IN THE BATH

The perfect height for easy and comfortable bathing. The water level indicator on the bath support and the non-slip rubber base provides optimal safety.



#### EASY TO STORE

This baby bath support has two carry handles and a handy loop at top so that you can hang it up for convenient storage.



#### ERGONOMIC DESIGN

Ergonomically designed bath support, providing optimal support, comfort and safety for baby.



scan me!  
Watch the video



This Angelcare Baby Monitor is a Personal Care Product. **Please DO NOT return this to the store**, but contact us initially for advice and assistance:

**Angelcare Helpline** on **0345 009 1789**

**Website:** [www.angelcare.co.uk](http://www.angelcare.co.uk)

**Email:** [helpline@babyhelpline.co.uk](mailto:helpline@babyhelpline.co.uk)

NOTE: Helpline is open Monday to Friday, 10am to 4pm, excluding bank holidays.



IM1100-UK-140915