



Sierra Wireless AirPrime

Q2687 Labeling Specification



SIERRA
WIRELESS

[WA_PGM_Q26RD_LBL_001]

[Rev 01]

[Date 12 March 2010]

Document History

Version	Date	Updates
001	March 12 2010	Creation



Contents

1. OVERVIEW.....	4
2. LABEL DIMENSIONS	5
2.1. Label Definition	5
2.2. IMEI Label.....	6
2.3. Label Layout	6
2.4. Serial Number definition	7
2.5. Logo.....	7

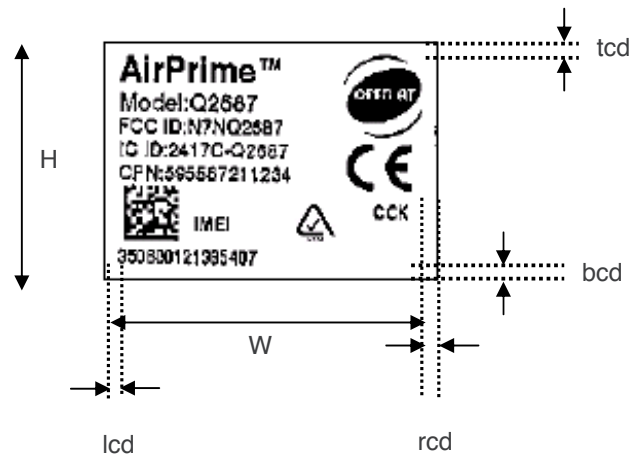
1. Overview

This document is the Sierra Wireless AirPrime Q2687 Label Specification.

>> 2. Label Dimensions

2.1. Label Definition

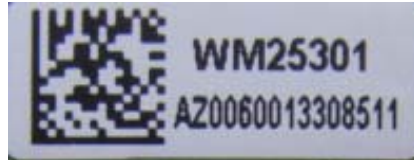
- Width W=29mm
- Height H=20mm



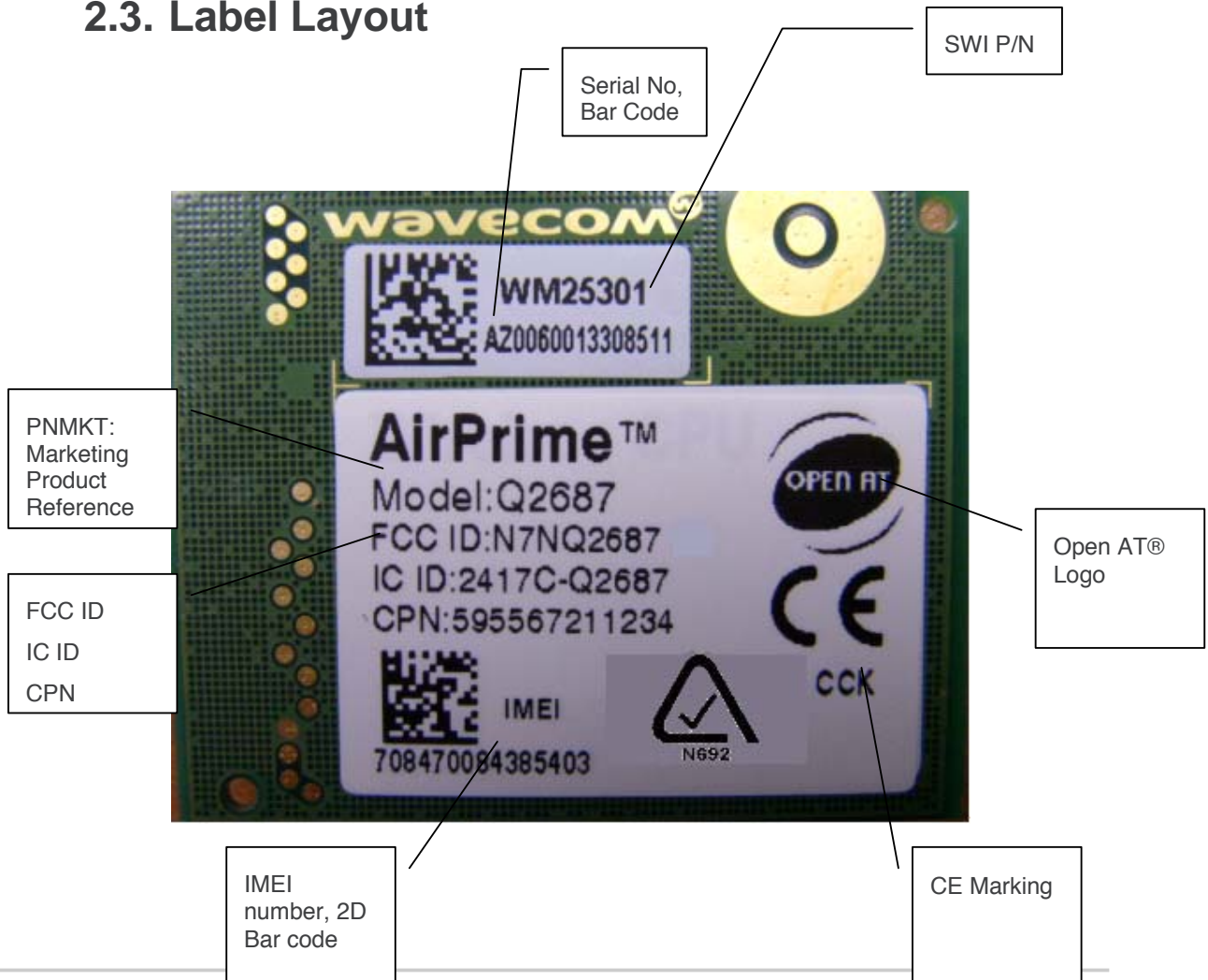
- Tolerances:
 - lcd, rcd = 1.5 mm ± 0.5mm, left/right clearance distance from the label edge
 - tcd,bcd = 0.75 mm ± 0.4mm, top/bottom clearance distance from the label edge

2.2. IMEI Label


- Width W : 16,5 mm
- Height H : 6,35 mm



2.3. Label Layout



2.4. Serial Number definition

Barcode :	<p>Barcode type : EAN 128 code B</p> <p>Length : x mm</p> <p>Height : y mm</p>  <p>White zone length before and after Barcode : 2 mm minimum</p> <p>Text font below : Arial 6</p>																
	Digit number	1	2	3	4	5	6	7	8	9	10	11	12	13	14	15	16
Data	t	t	y	w	w	n	n	n	n	n	b	b	h	h	h	r	r
Part	tt		y	ww		nnnnn				bb		hhh			rr		
Name of part	Module Type		Year	Week		Module week serial number				Site		Hard version			traceability		
Definition	Specify the type of module		Specify date of production		Specify the number of modules during the week				Specify the factory site		Specify the number of the hard version			Option			
Example	AZ		0	06		001330				08		511					
Module serial number (15 first digits)																	

2.5. Logo

