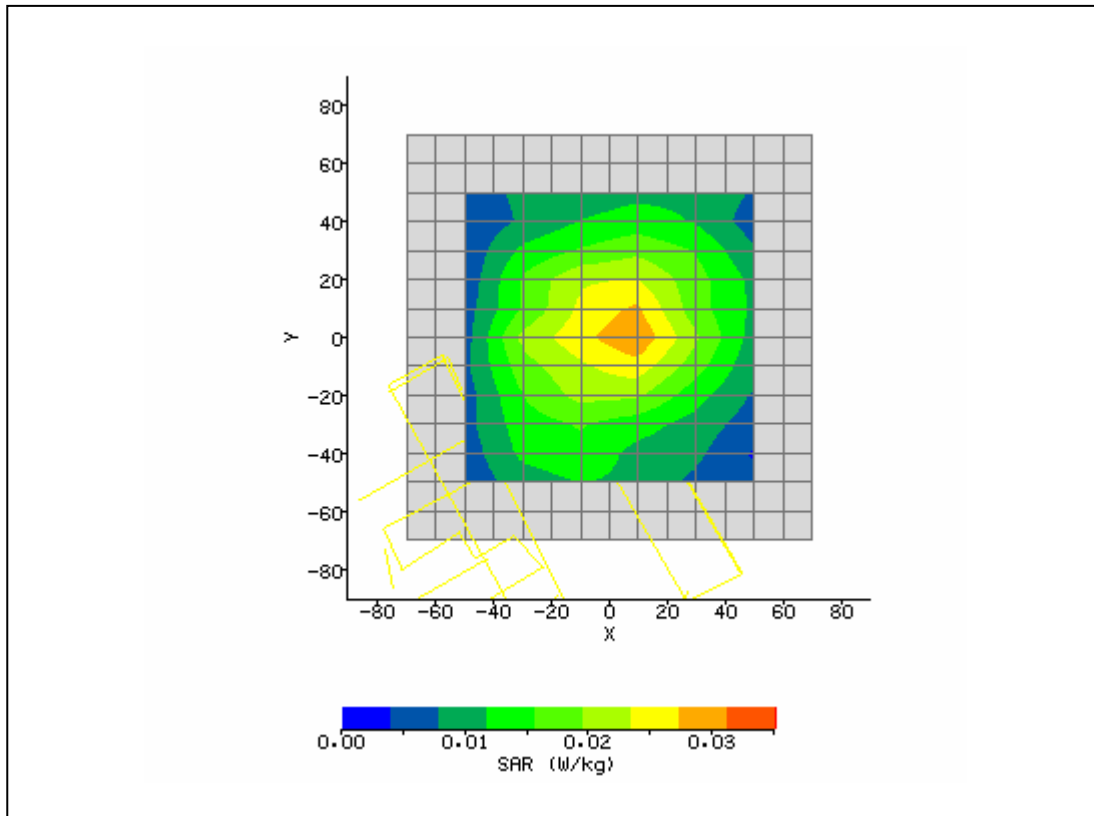
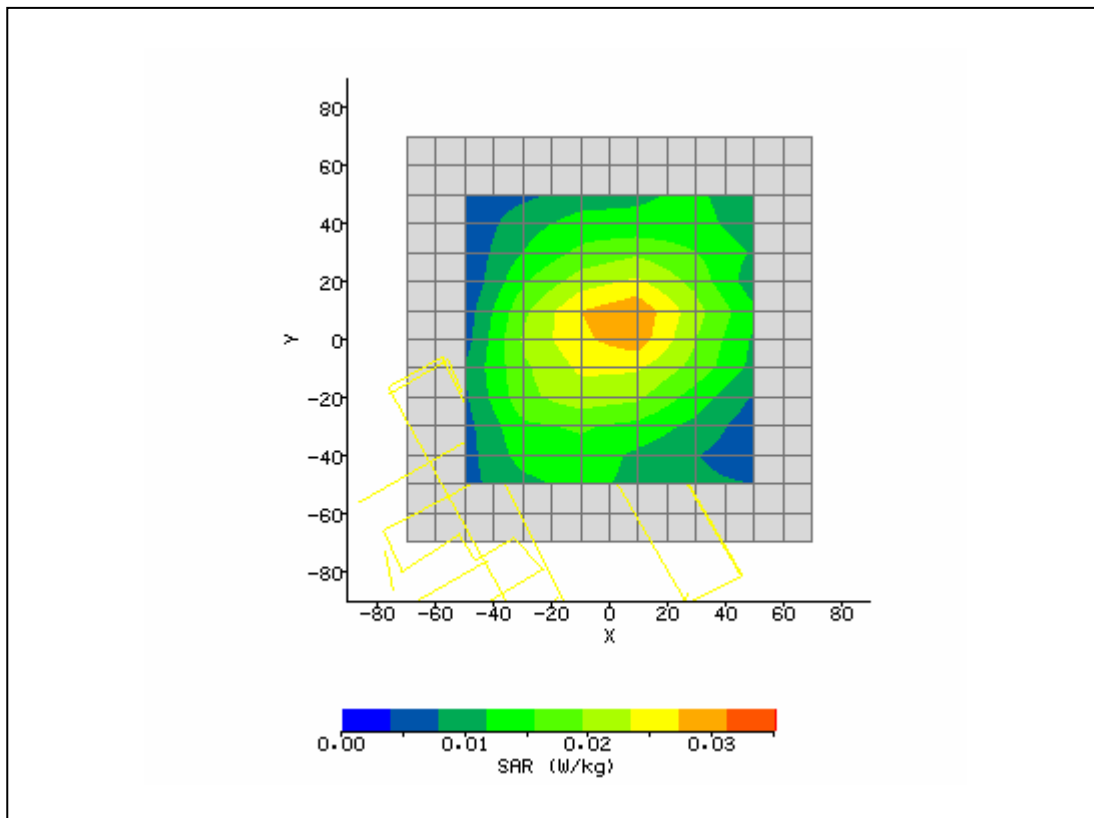


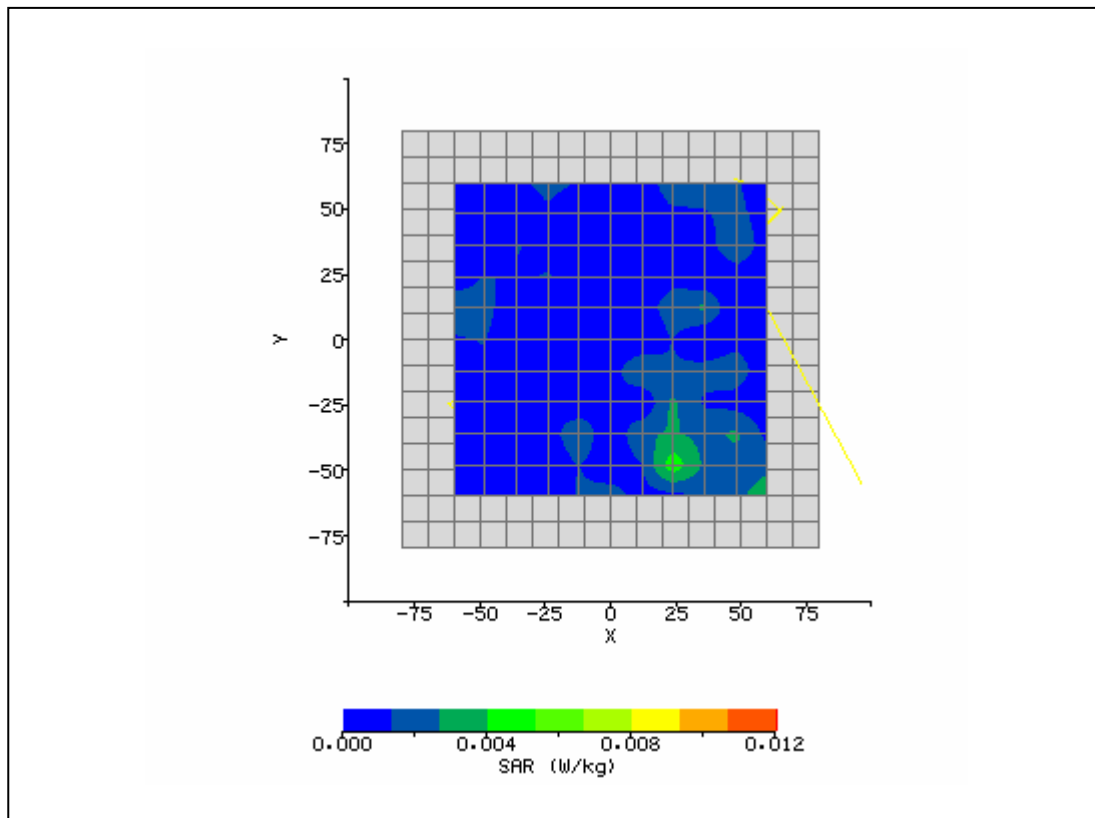
| | | | |
|---|----------------------|------------------------------------|------------|
| System / software: | SARA2 / 2.40 VPM | Input Power Drift: | |
| Date / Time: | 3/21/2007 8:03:29 AM | DUT Battery Model/No: | |
| Filename: | lap190_3d.txt | Probe Serial Number: | L0116 |
| Ambient Temperature: | 22.8°C | Liquid Simulant: | 850 |
| Device Under Test: | Lenovo C3 | Relative Permittivity: | 55.72 |
| Relative Humidity: | 30% | Conductivity: | 0.988 |
| Phantom S/No: | HeadBox1.csv | Liquid Temperature: | 22.0°C |
| Phantom Rotation: | 0° | Max SAR X-axis Location: | 6.00 mm |
| DUT Position: | Lap touching | Max SAR Y-axis Location: | 1.00 mm |
| Antenna Configuration: | Integral | Max E Field: | 5.55 V/m |
| Test Frequency: | 836.6MHz | SAR 1g: | 0.038 W/kg |
| Air Factors: | 488 / 373 / 340 | SAR 10g: | 0.026 W/kg |
| Conversion Factors: | .470 / .470 / .470 | SAR Start: | 0.011 W/kg |
| Type of Modulation: | | SAR End: | 0.010 W/kg |
| Modn. Duty Cycle: | | SAR Drift during Scan: | -4.88 % |
| Diode Compression Factors (V*200): | 20 / 20 / 20 | Probe battery last changed: | 03/21/07 |
| Input Power Level: | max 4 timeslots | Extrapolation: | poly4 |



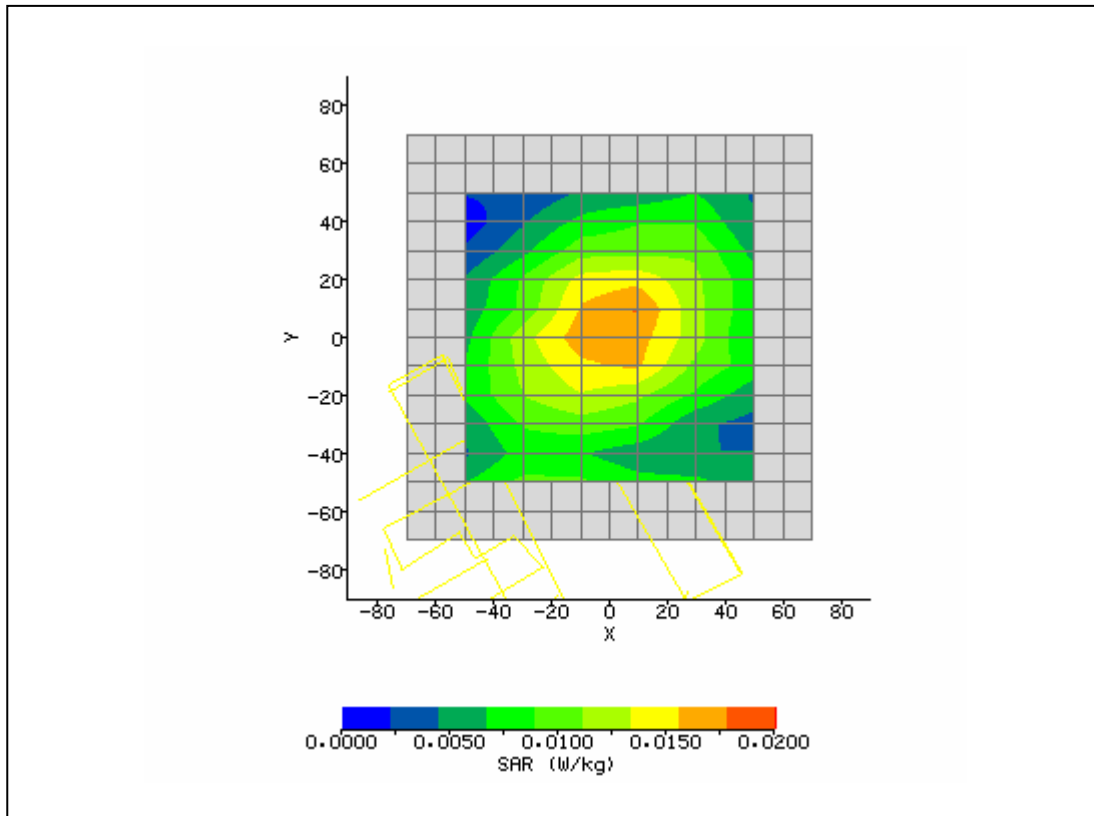
| | | | |
|---|----------------------|------------------------------------|------------|
| System / software: | SARA2 / 2.40 VPM | Input Power Drift: | |
| Date / Time: | 3/21/2007 8:22:56 AM | DUT Battery Model/No: | |
| Filename: | back190_3d.txt | Probe Serial Number: | L0116 |
| Ambient Temperature: | 22.8°C | Liquid Simulant: | 850 |
| Device Under Test: | Lenovo C3 | Relative Permittivity: | 55.72 |
| Relative Humidity: | 30% | Conductivity: | 0.988 |
| Phantom S/No: | HeadBox1.csv | Liquid Temperature: | 22.0°C |
| Phantom Rotation: | 0° | Max SAR X-axis Location: | 4.00 mm |
| DUT Position: | Lap touching | Max SAR Y-axis Location: | 6.00 mm |
| Antenna Configuration: | Integral | Max E Field: | 5.60 V/m |
| Test Frequency: | 836.6MHz & 2402BT | SAR 1g: | 0.039 W/kg |
| Air Factors: | 488 / 373 / 340 | SAR 10g: | 0.026 W/kg |
| Conversion Factors: | .470 / .470 / .470 | SAR Start: | 0.011 W/kg |
| Type of Modulation: | | SAR End: | 0.011 W/kg |
| Modn. Duty Cycle: | | SAR Drift during Scan: | 0.12 % |
| Diode Compression Factors (V*200): | 20 / 20 / 20 | Probe battery last changed: | 03/21/07 |
| Input Power Level: | max 4 timeslots | Extrapolation: | poly4 |



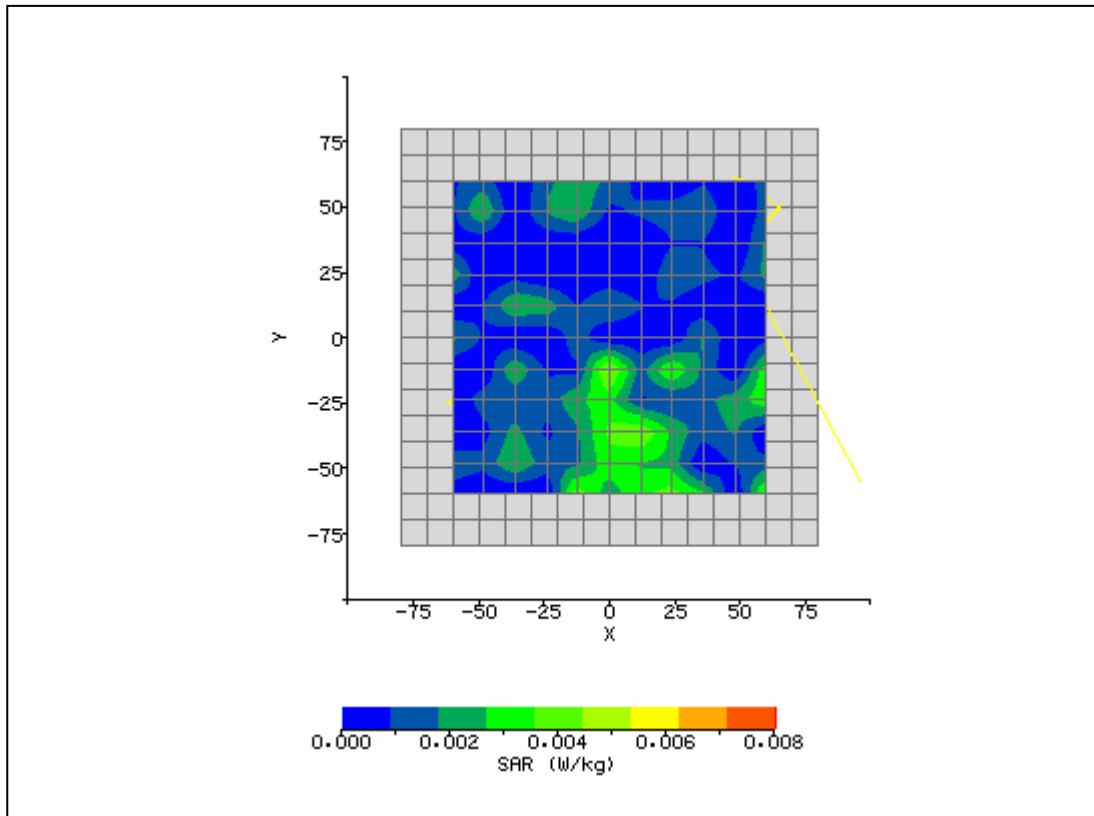
| | | | |
|---|-----------------------|------------------------------------|------------|
| System / software: | SARA2 / 2.40 VPM | Input Power Drift: | |
| Date / Time: | 4/17/2007 11:04:15 AM | DUT Battery Model/No: | |
| Filename: | temp.txt | Probe Serial Number: | L0116 |
| Ambient Temperature: | 22.8°C | Liquid Simulant: | 850 |
| Device Under Test: | Lenovo C3 W MC8775 | Relative Permittivity: | 5.21.98 |
| Relative Humidity: | 30% | Conductivity: | 0.968 |
| Phantom S/No: | HeadBox1.csv | Liquid Temperature: | 22.0°C |
| Phantom Rotation: | 0° | Max SAR X-axis Location: | 60.00 mm |
| DUT Position: | Lap | Max SAR Y-axis Location: | -60.00 mm |
| Antenna Configuration: | Integral | Max E Field: | 3.27 V/m |
| Test Frequency: | 836.6MHz | SAR 1g: | 0.026 W/kg |
| Air Factors: | 488 / 373 / 340 | SAR 10g: | 0.011 W/kg |
| Conversion Factors: | .470 / .470 / .470 | SAR Start: | 0.004 W/kg |
| Type of Modulation: | | SAR End: | 0.004 W/kg |
| Modn. Duty Cycle: | | SAR Drift during Scan: | 1.23 % |
| Diode Compression Factors (V*200): | 20 / 20 / 20 | Probe battery last changed: | 04/13/07 |
| Input Power Level: | EDGE Max 4 timeslots | Extrapolation: | poly4 |



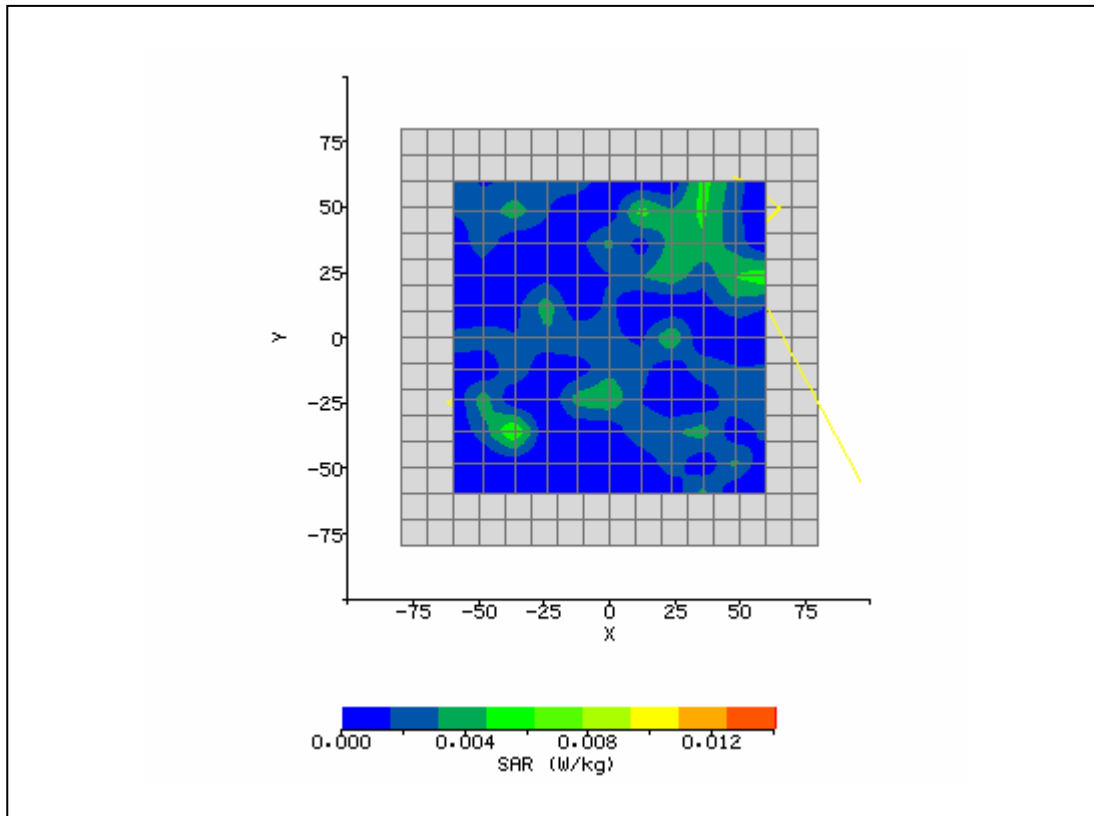
| | | | |
|---|-----------------------|------------------------------------|------------|
| System / software: | SARA2 / 2.40 VPM | Input Power Drift: | |
| Date / Time: | 4/17/2007 11:12:21 AM | DUT Battery Model/No: | |
| Filename: | temp.txt | Probe Serial Number: | L0116 |
| Ambient Temperature: | 22.8°C | Liquid Simulant: | 850 |
| Device Under Test: | Lenovo C3 W MC8775 | Relative Permittivity: | 5.21.98 |
| Relative Humidity: | 30% | Conductivity: | 0.968 |
| Phantom S/No: | HeadBox1.csv | Liquid Temperature: | 22.0°C |
| Phantom Rotation: | 0° | Max SAR X-axis Location: | 2.00 mm |
| DUT Position: | Lap | Max SAR Y-axis Location: | 5.00 mm |
| Antenna Configuration: | Integral | Max E Field: | 2.76 V/m |
| Test Frequency: | 836.6MHz | SAR 1g: | 0.020 W/kg |
| Air Factors: | 488 / 373 / 340 | SAR 10g: | 0.005 W/kg |
| Conversion Factors: | .470 / .470 / .470 | SAR Start: | 0.002 W/kg |
| Type of Modulation: | | SAR End: | 0.002 W/kg |
| Modn. Duty Cycle: | | SAR Drift during Scan: | 1.73 % |
| Diode Compression Factors (V*200): | 20 / 20 / 20 | Probe battery last changed: | 04/13/07 |
| Input Power Level: | WCDMA | Extrapolation: | poly4 |



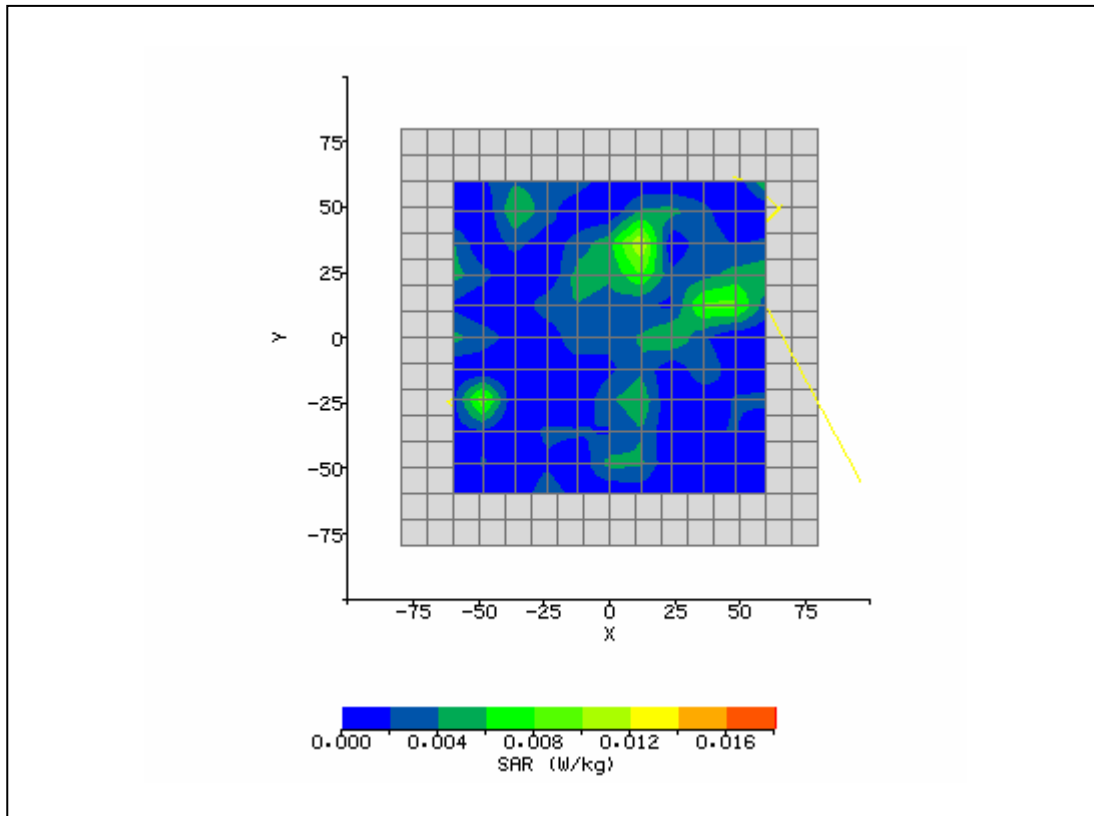
| | | | |
|---|-----------------------|------------------------------------|------------|
| System / software: | SARA2 / 2.40 VPM | Input Power Drift: | |
| Date / Time: | 4/17/2007 11:04:15 AM | DUT Battery Model/No: | |
| Filename: | temp.txt | Probe Serial Number: | L0116 |
| Ambient Temperature: | 22.8°C | Liquid Simulant: | 850 |
| Device Under Test: | Lenovo C3 W MC8775 | Relative Permittivity: | 5.21.98 |
| Relative Humidity: | 30% | Conductivity: | 0.968 |
| Phantom S/No: | HeadBox1.csv | Liquid Temperature: | 22.0°C |
| Phantom Rotation: | 0° | Max SAR X-axis Location: | 21.60 mm |
| DUT Position: | Lap | Max SAR Y-axis Location: | -60.00 mm |
| Antenna Configuration: | Integral | Max E Field: | 2.76 V/m |
| Test Frequency: | 836.6MHz | SAR 1g: | 0.019 W/kg |
| Air Factors: | 488 / 373 / 340 | SAR 10g: | 0.005 W/kg |
| Conversion Factors: | .470 / .470 / .470 | SAR Start: | 0.002 W/kg |
| Type of Modulation: | | SAR End: | 0.002 W/kg |
| Modn. Duty Cycle: | | SAR Drift during Scan: | 1.03 % |
| Diode Compression Factors (V*200): | 20 / 20 / 20 | Probe battery last changed: | 04/13/07 |
| Input Power Level: | WCDMA HSDPA | Extrapolation: | poly4 |



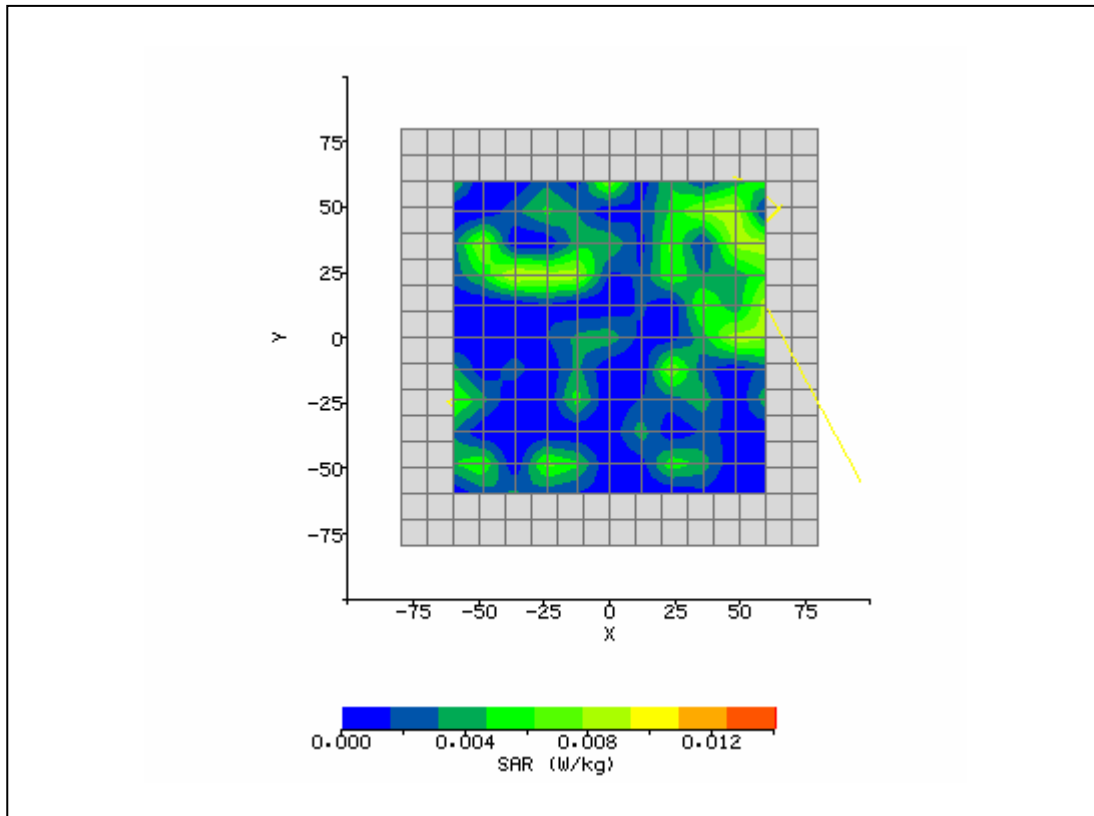
| | | | |
|---|-----------------------|------------------------------------|------------|
| System / software: | SARA2 / 2.40 VPM | Input Power Drift: | |
| Date / Time: | 4/17/2007 11:04:15 AM | DUT Battery Model/No: | |
| Filename: | temp.txt | Probe Serial Number: | L0116 |
| Ambient Temperature: | 22.8°C | Liquid Simulant: | 1900 |
| Device Under Test: | Lenovo C3 W MC8775 | Relative Permittivity: | 52.98 |
| Relative Humidity: | 30% | Conductivity: | 1.554 |
| Phantom S/No: | HeadBox1.csv | Liquid Temperature: | 22.0°C |
| Phantom Rotation: | 0° | Max SAR X-axis Location: | 33.60 mm |
| DUT Position: | Lap | Max SAR Y-axis Location: | 42.00 mm |
| Antenna Configuration: | Integral | Max E Field: | 3.21 V/m |
| Test Frequency: | 1880MHz | SAR 1g: | 0.022 W/kg |
| Air Factors: | 488 / 373 / 340 | SAR 10g: | 0.008 W/kg |
| Conversion Factors: | .630 / .630 / .630 | SAR Start: | 0.003 W/kg |
| Type of Modulation: | | SAR End: | 0.003 W/kg |
| Modn. Duty Cycle: | | SAR Drift during Scan: | -1.61 % |
| Diode Compression Factors (V*200): | 20 / 20 / 20 | Probe battery last changed: | 04/13/07 |
| Input Power Level: | Max 4 timeslots | Extrapolation: | poly4 |



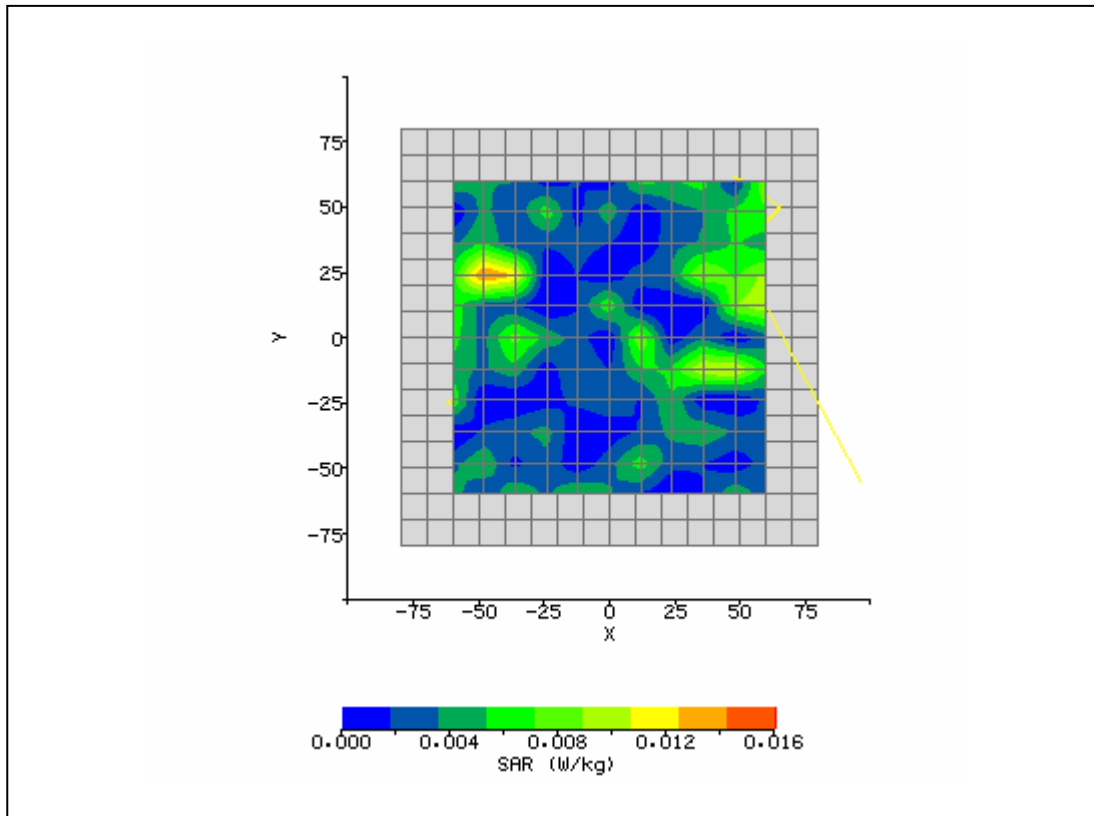
| | | | |
|---|-----------------------|------------------------------------|------------|
| System / software: | SARA2 / 2.40 VPM | Input Power Drift: | |
| Date / Time: | 4/17/2007 11:04:15 AM | DUT Battery Model/No: | |
| Filename: | temp.txt | Probe Serial Number: | L0116 |
| Ambient Temperature: | 22.8°C | Liquid Simulant: | 1900 |
| Device Under Test: | Lenovo C3 W MC8775 | Relative Permittivity: | 52.98 |
| Relative Humidity: | 30% | Conductivity: | 1.554 |
| Phantom S/No: | HeadBox1.csv | Liquid Temperature: | 22.0°C |
| Phantom Rotation: | 0° | Max SAR X-axis Location: | 9.60 mm |
| DUT Position: | Lap | Max SAR Y-axis Location: | 32.40 mm |
| Antenna Configuration: | Integral | Max E Field: | 3.36 V/m |
| Test Frequency: | 1880MHz & 2402 BT | SAR 1g: | 0.024 W/kg |
| Air Factors: | 488 / 373 / 340 | SAR 10g: | 0.009 W/kg |
| Conversion Factors: | .630 / .630 / .630 | SAR Start: | 0.003 W/kg |
| Type of Modulation: | | SAR End: | 0.003 W/kg |
| Modn. Duty Cycle: | | SAR Drift during Scan: | -1.61 % |
| Diode Compression Factors (V*200): | 20 / 20 / 20 | Probe battery last changed: | 04/13/07 |
| Input Power Level: | Max 4 timeslots | Extrapolation: | poly4 |



| | | | |
|---|-----------------------|------------------------------------|------------|
| System / software: | SARA2 / 2.40 VPM | Input Power Drift: | |
| Date / Time: | 4/17/2007 11:04:15 AM | DUT Battery Model/No: | |
| Filename: | temp.txt | Probe Serial Number: | L0116 |
| Ambient Temperature: | 22.8°C | Liquid Simulant: | 1900 |
| Device Under Test: | Lenovo C3 W MC8775 | Relative Permittivity: | 52.98 |
| Relative Humidity: | 30% | Conductivity: | 1.554 |
| Phantom S/No: | HeadBox1.csv | Liquid Temperature: | 22.0°C |
| Phantom Rotation: | 0° | Max SAR X-axis Location: | 60.00 mm |
| DUT Position: | Lap | Max SAR Y-axis Location: | 8.40 mm |
| Antenna Configuration: | Integral | Max E Field: | 2.96 V/m |
| Test Frequency: | 1880MHz | SAR 1g: | 0.019 W/kg |
| Air Factors: | 488 / 373 / 340 | SAR 10g: | 0.008 W/kg |
| Conversion Factors: | .630 / .630 / .630 | SAR Start: | 0.003 W/kg |
| Type of Modulation: | | SAR End: | 0.003 W/kg |
| Modn. Duty Cycle: | | SAR Drift during Scan: | 0.74 % |
| Diode Compression Factors (V*200): | 20 / 20 / 20 | Probe battery last changed: | 04/13/07 |
| Input Power Level: | EDGE Max 4 timeslots | Extrapolation: | poly4 |



| | | | |
|---|-----------------------|------------------------------------|------------|
| System / software: | SARA2 / 2.40 VPM | Input Power Drift: | |
| Date / Time: | 4/17/2007 11:04:15 AM | DUT Battery Model/No: | |
| Filename: | temp.txt | Probe Serial Number: | L0116 |
| Ambient Temperature: | 22.8°C | Liquid Simulant: | 1900 |
| Device Under Test: | Lenovo C3 W MC8775 | Relative Permittivity: | 52.98 |
| Relative Humidity: | 30% | Conductivity: | 1.554 |
| Phantom S/No: | HeadBox1.csv | Liquid Temperature: | 22.0°C |
| Phantom Rotation: | 0° | Max SAR X-axis Location: | 60.00 mm |
| DUT Position: | Lap | Max SAR Y-axis Location: | 18.00 mm |
| Antenna Configuration: | Integral | Max E Field: | 3.03 V/m |
| Test Frequency: | 1880MHz | SAR 1g: | 0.014 W/kg |
| Air Factors: | 488 / 373 / 340 | SAR 10g: | 0.007 W/kg |
| Conversion Factors: | .630 / .630 / .630 | SAR Start: | 0.004 W/kg |
| Type of Modulation: | | SAR End: | 0.004 W/kg |
| Modn. Duty Cycle: | | SAR Drift during Scan: | 1.32 % |
| Diode Compression Factors (V*200): | 20 / 20 / 20 | Probe battery last changed: | 04/13/07 |
| Input Power Level: | WCDMA | Extrapolation: | poly4 |



| | | | |
|---|-----------------------|------------------------------------|------------|
| System / software: | SARA2 / 2.40 VPM | Input Power Drift: | |
| Date / Time: | 4/17/2007 11:04:15 AM | DUT Battery Model/No: | |
| Filename: | temp.txt | Probe Serial Number: | L0116 |
| Ambient Temperature: | 22.8°C | Liquid Simulant: | 1900 |
| Device Under Test: | Lenovo C3 W MC8775 | Relative Permittivity: | 52.98 |
| Relative Humidity: | 30% | Conductivity: | 1.554 |
| Phantom S/No: | HeadBox1.csv | Liquid Temperature: | 22.0°C |
| Phantom Rotation: | 0° | Max SAR X-axis Location: | 46.80 mm |
| DUT Position: | Lap | Max SAR Y-axis Location: | 24.00 mm |
| Antenna Configuration: | Integral | Max E Field: | 2.87 V/m |
| Test Frequency: | 1880MHz | SAR 1g: | 0.013 W/kg |
| Air Factors: | 488 / 373 / 340 | SAR 10g: | 0.007 W/kg |
| Conversion Factors: | .630 / .630 / .630 | SAR Start: | 0.004 W/kg |
| Type of Modulation: | | SAR End: | 0.004 W/kg |
| Modn. Duty Cycle: | | SAR Drift during Scan: | 0.58 % |
| Diode Compression Factors (V*200): | 20 / 20 / 20 | Probe battery last changed: | 04/13/07 |
| Input Power Level: | WCDMA HSDPA | Extrapolation: | poly4 |

