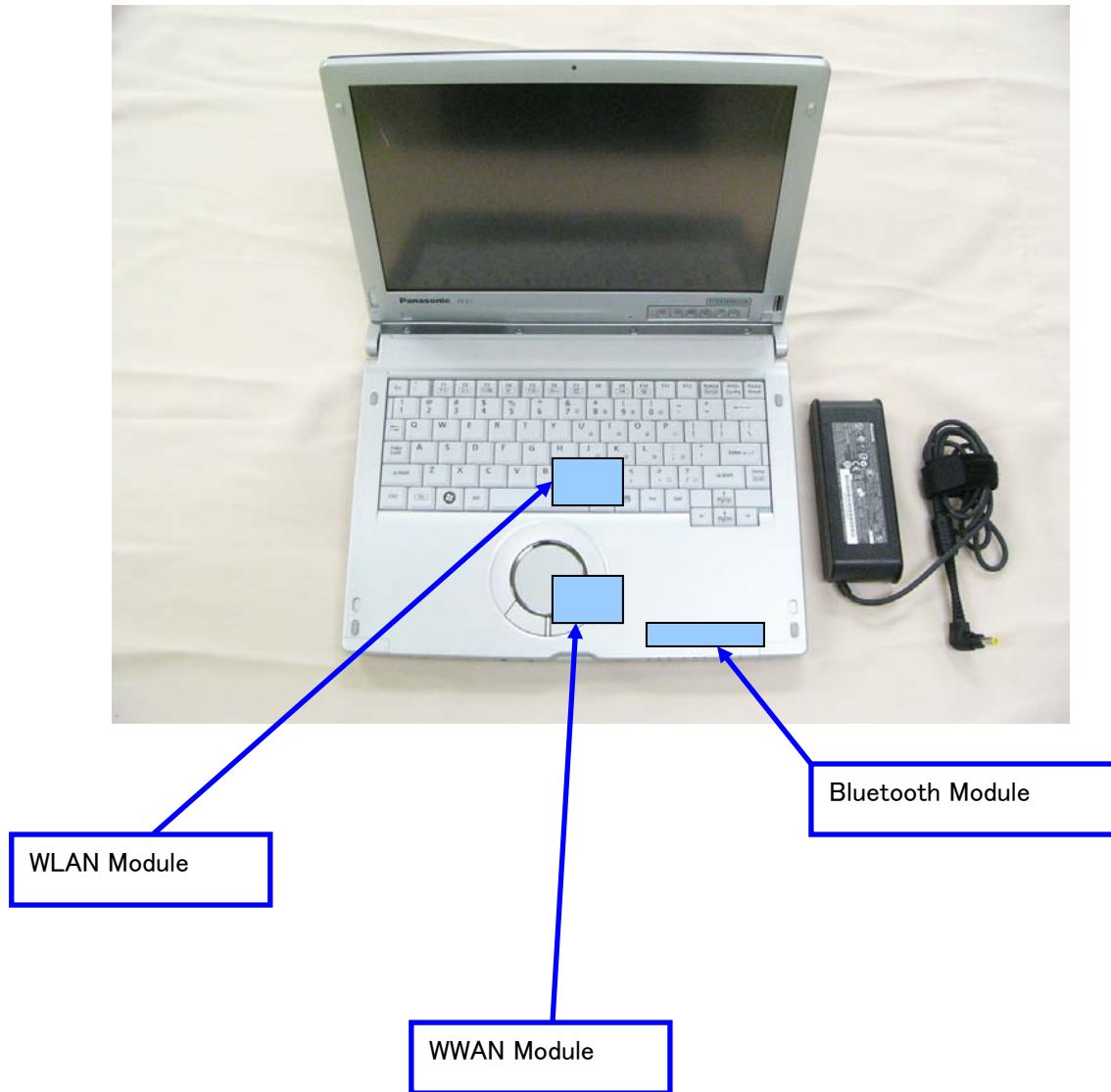
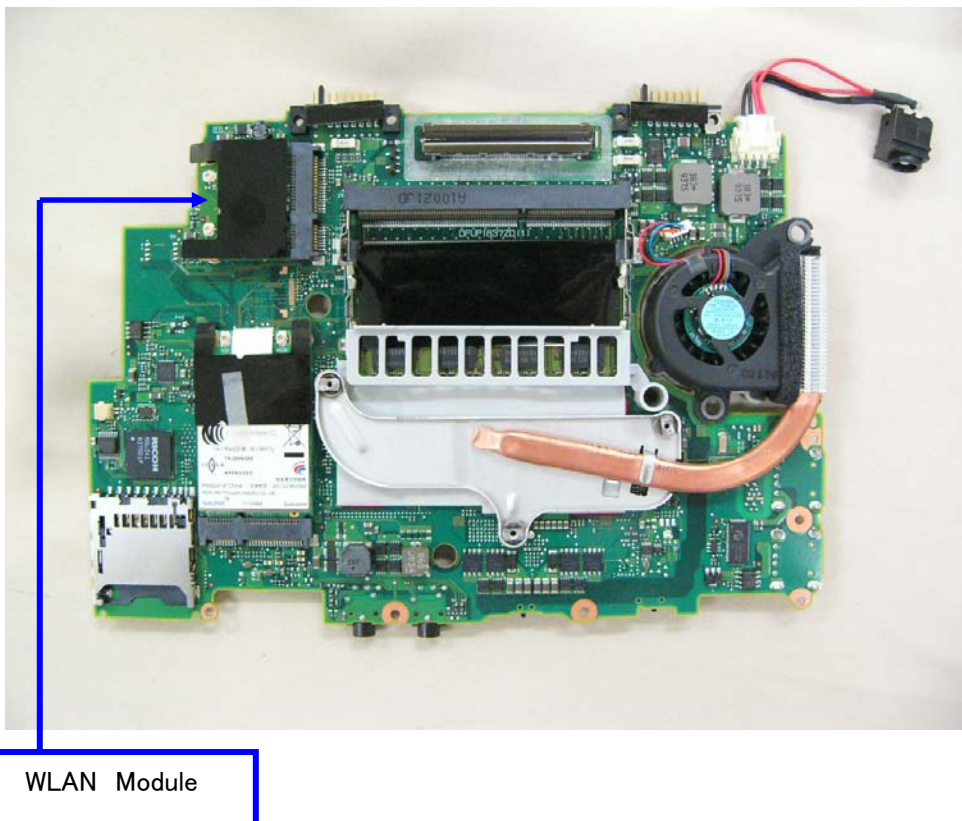
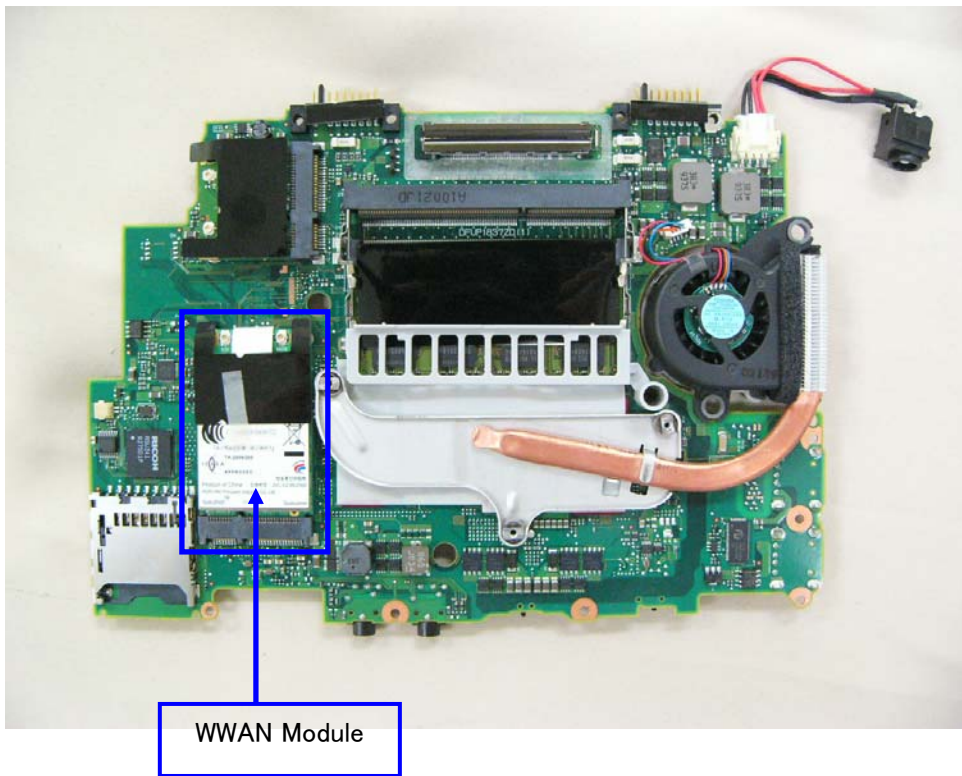


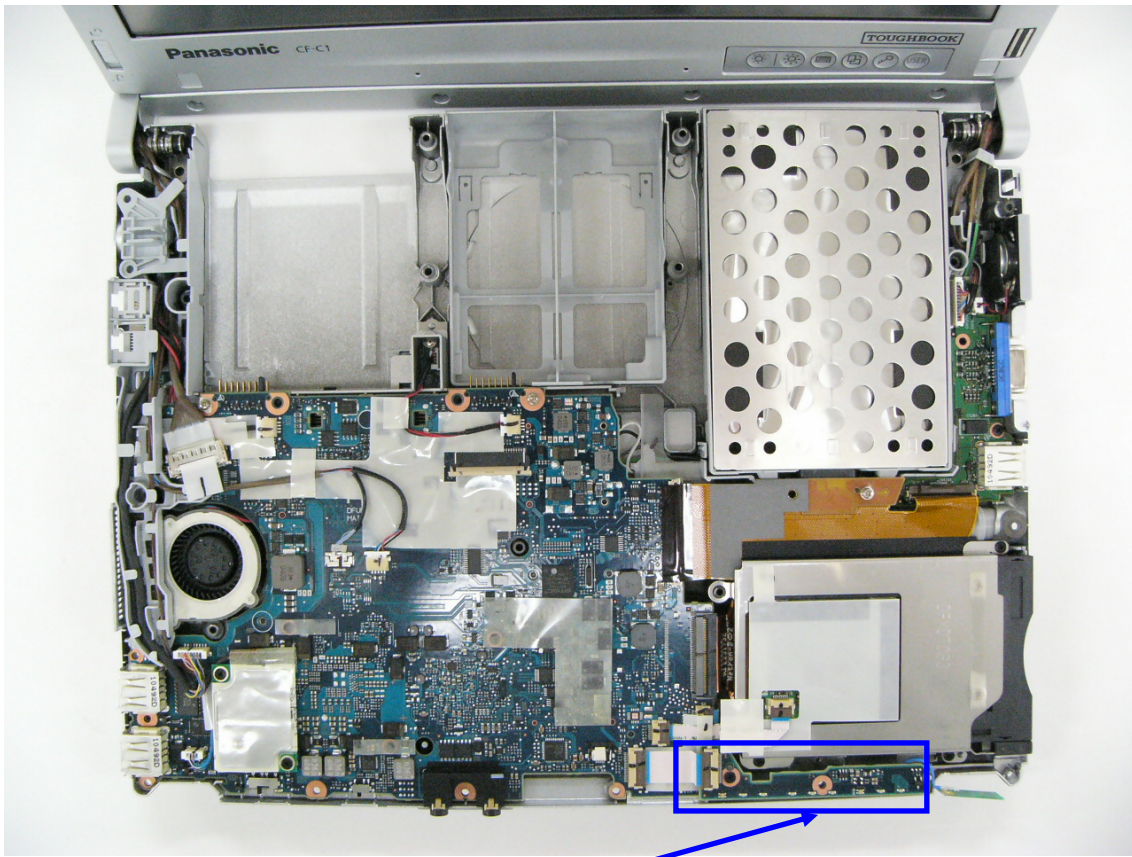
< CF-C1 WL11A +BT11B +WWAN (MC7700 / MC7750) >

1. Top and Front View

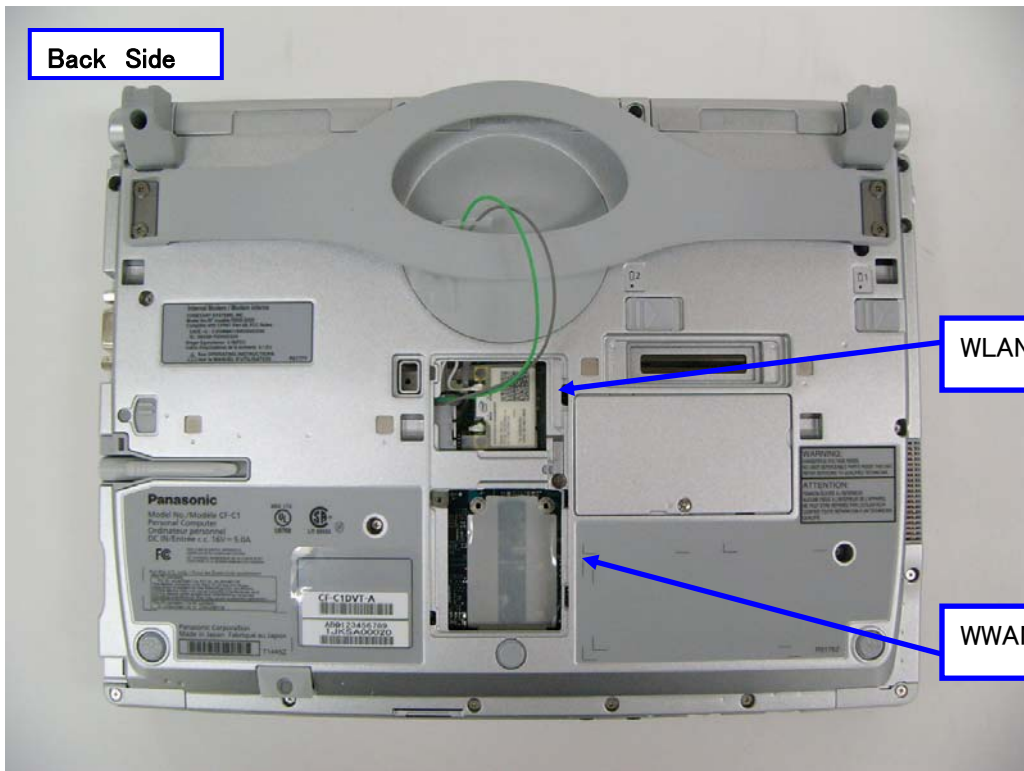


2. Module Position





Bluetooth board

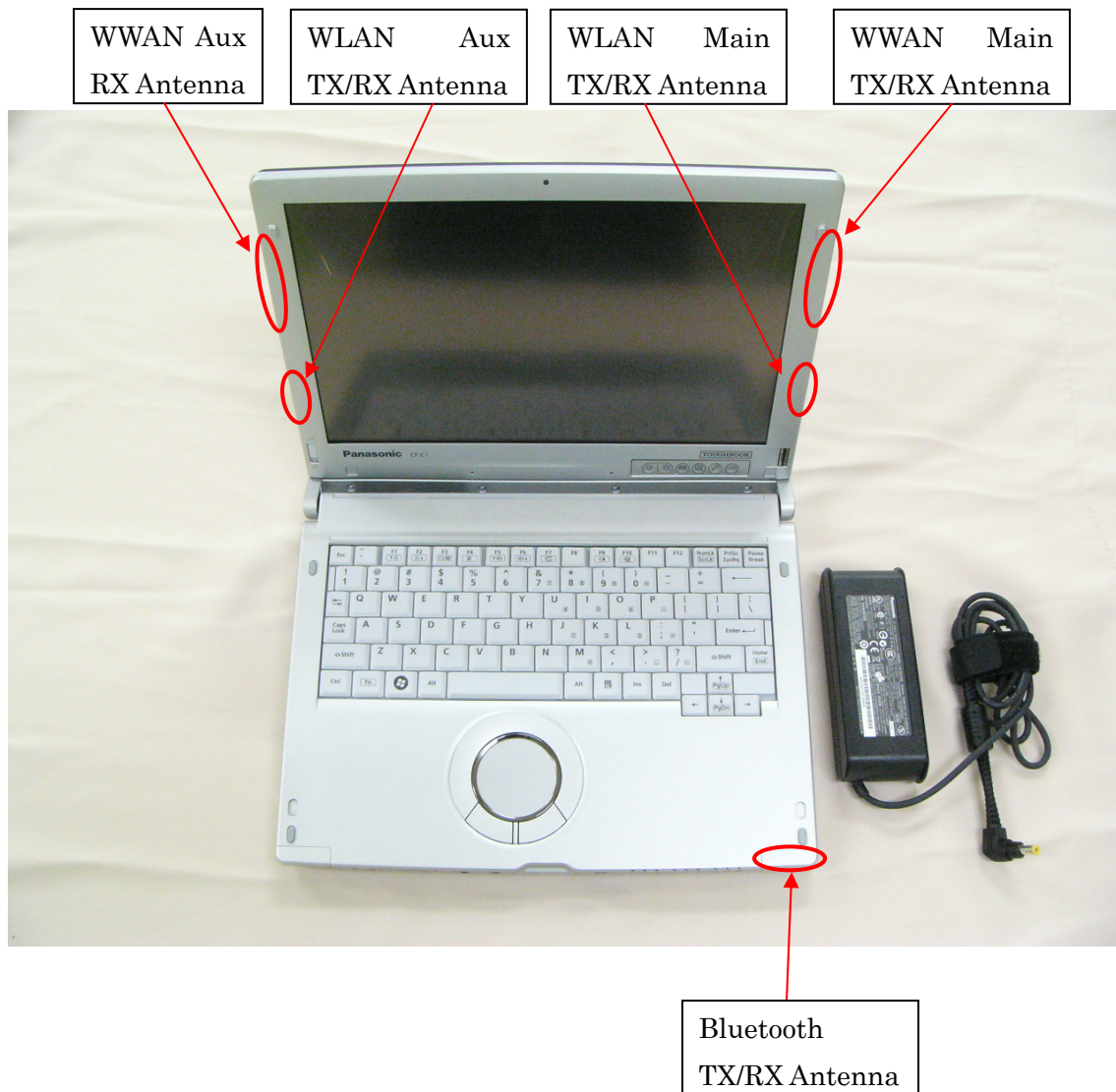


Back Side

WLAN Module

WWAN Module

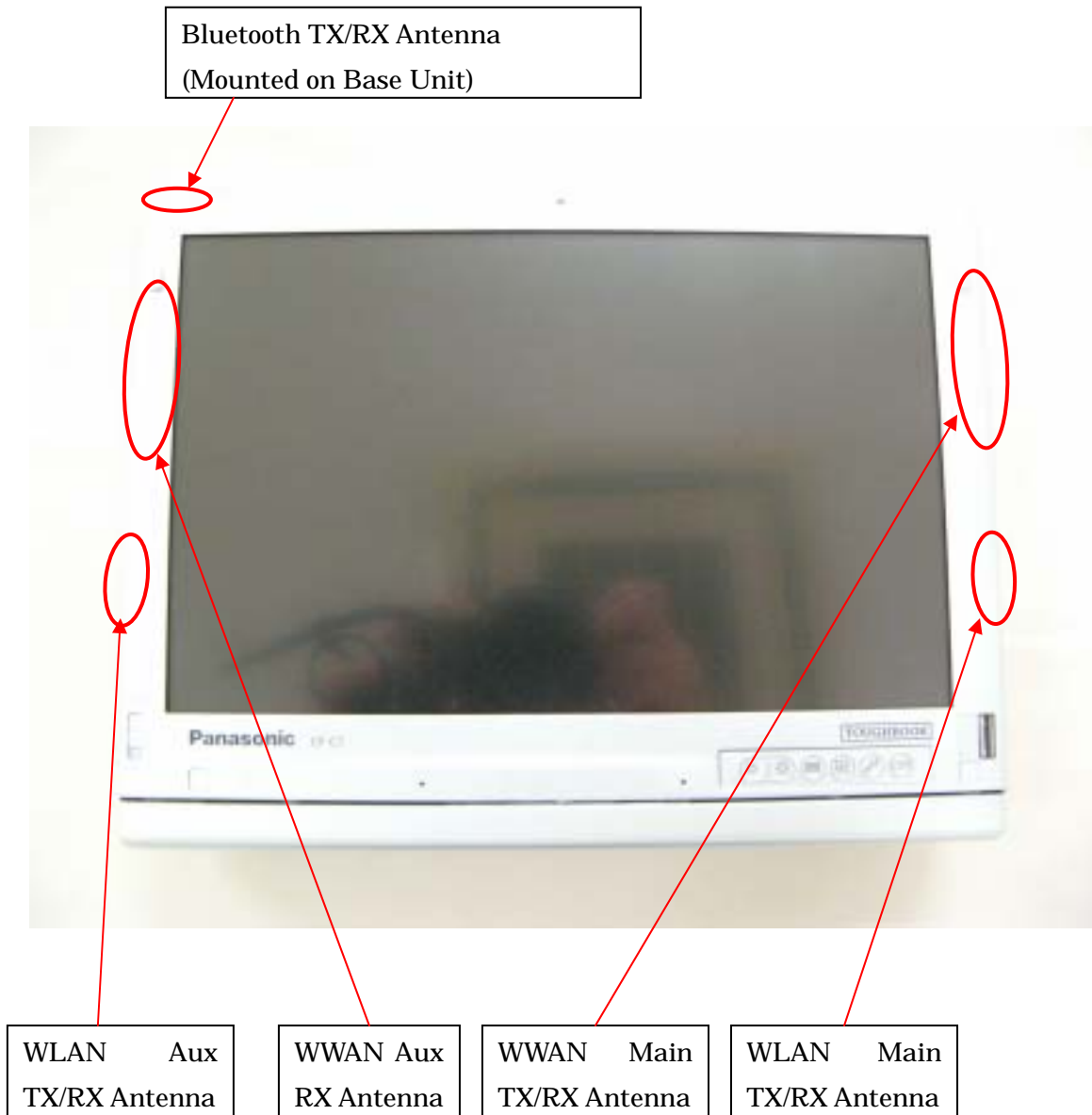
3. Antenna Position and Antenna photo



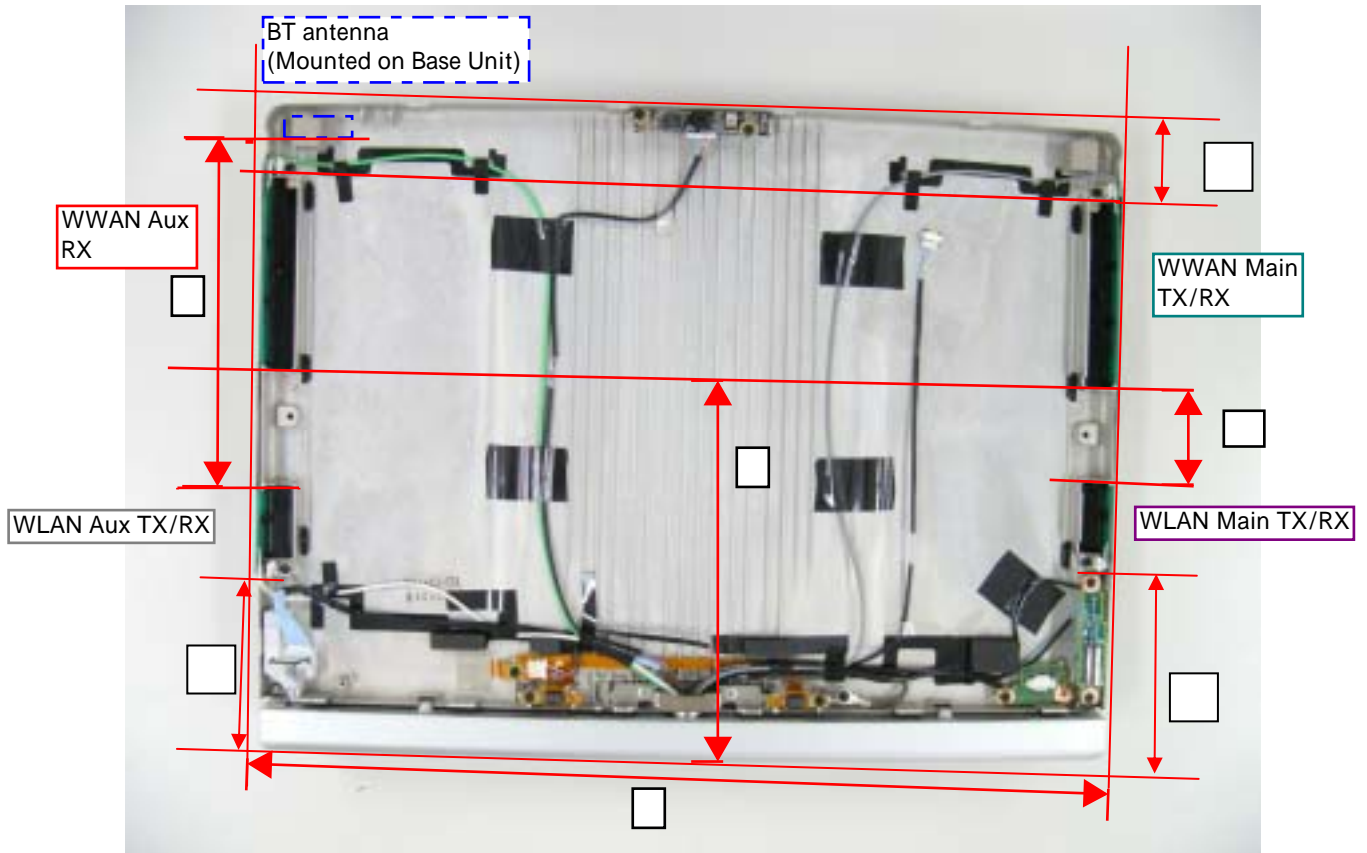
Antenna Location



2. Tablet Mode



Antenna Location



WWAN Main – Top side : 20mm
WLAN Main – Bottom side: 70mm
WLAN Aux – Bottom side: 65mm
WWAN Main - WLAN Main : 50mm
Right side - Left side : 298mm
WWAN Main - Bottom side : 135mm
WLAN Aux - BT antenna : 140mm

Remark:

WWAN main - Right side: 1mm

WLAN main - Right side: 1mm

WLAN Aux - Left side: 1mm

4. Antenna Specification

WLAN Main TX/RX Antenna: Pattern Antenna

(Monopole type: 1.01dBi max 2.4GHz)

(Monopole type: 1.21dBi max 5.18-5.32GHz)

(Monopole type: 0.54dBi max 5.50-5.70GHz)

(Monopole type: 0.48dBi max 5.700-5.825GHz)

WLAN Aux TX/RX Antenna: Pattern Antenna

(Monopole type: 1.37dBi max 2.4GHz)

(Monopole type: 0.69dBi max 5.18-5.32GHz)

(Monopole type: -0.13dBi max 5.50-5.70GHz)

(Monopole type: 0.75dBi max 5.700-5.825GHz)

Bluetooth TX/RX Antenna: Pattern Antenna

(Inverted-F type: 1.34dBi max)

WWAN Main TX/RX Antenna: Pattern Antenna (**Common frequency of Module**)

(Inverted-F type: -2.48dBi max 850MHz)

(Inverted-F type: -2.06dBi max 1900MHz)

WWAN Main TX/RX Antenna: Pattern Antenna. (**MC7700 only**)

(Inverted-F type: -2.93dBi max 704-716MHz)

(Inverted-F type: -0.81dBi max 1.8GHz)

WWAN Main TX/RX Antenna: Pattern Antenna. (**MC7750 only**)

(Inverted-F type: -1.4dBi max 777-787MHz)

WWAN Aux RX Antenna: Pattern Antenna (Inverted-F type RX only)

That's all.