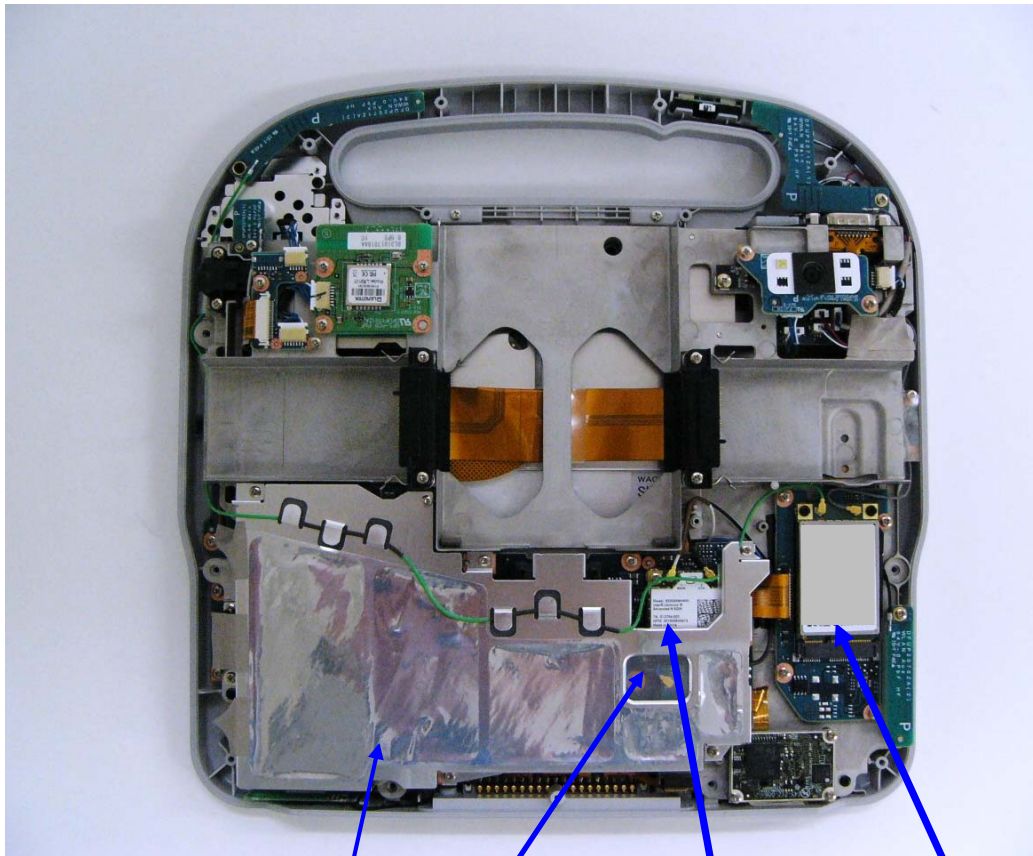


Radio Module Location

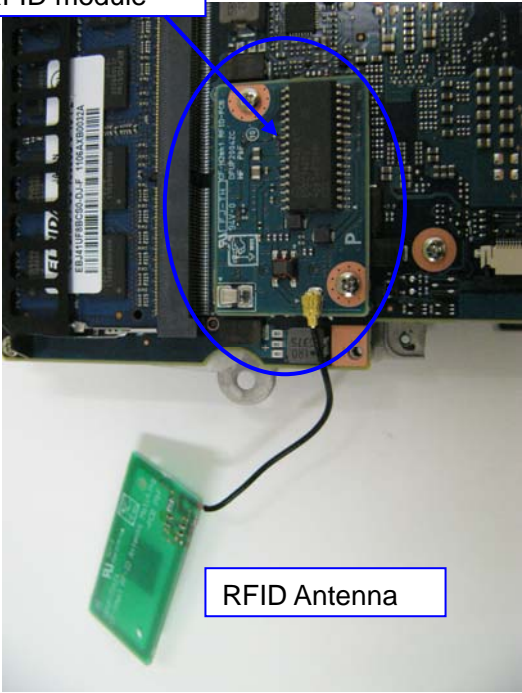


BT Module

WLAN Module

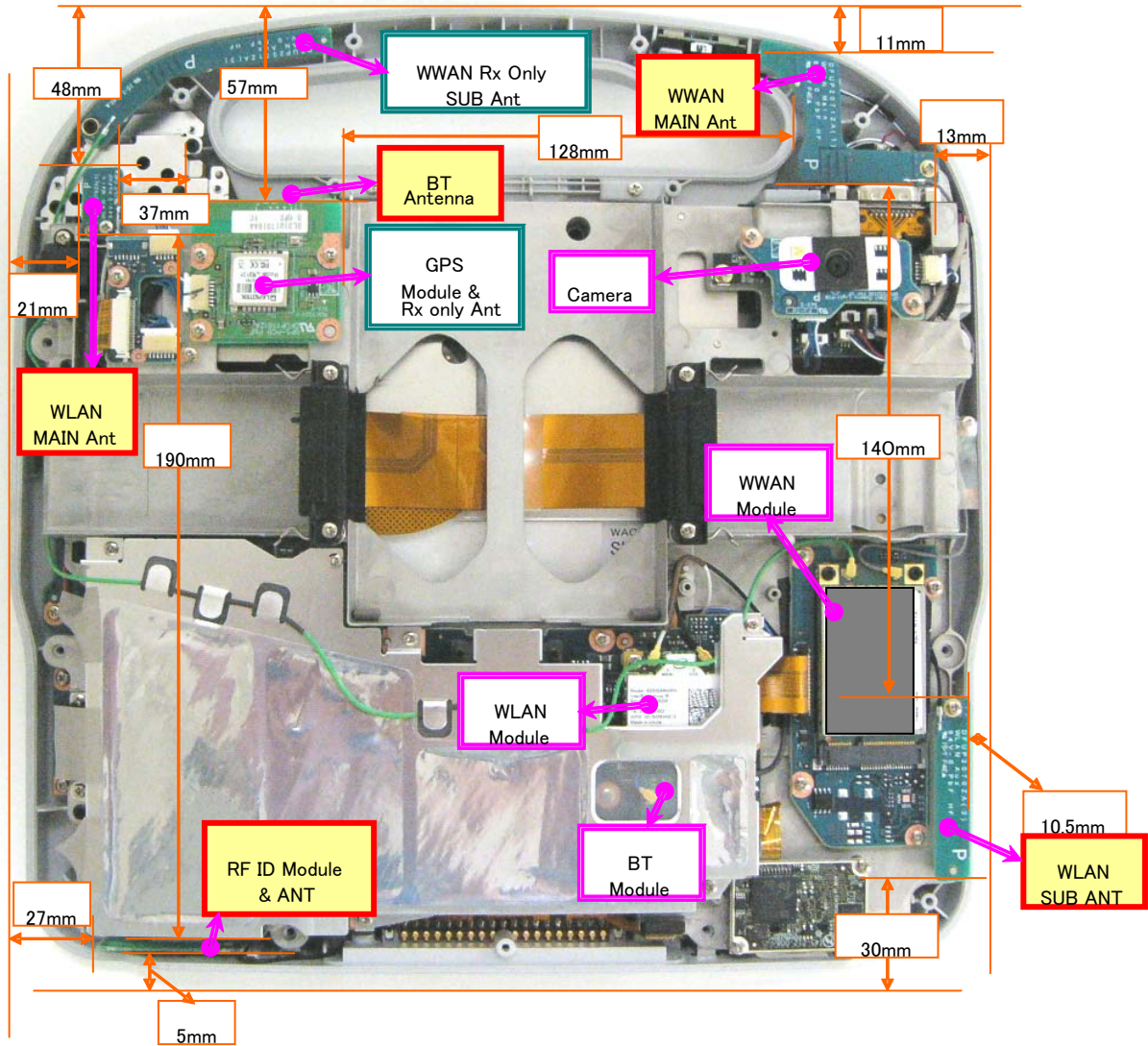
WWAN Module

RFID module



RFID Antenna

Diagram



Antenna Specification in CF-H2

WLAN Main TX/RX Antenna: PIFA Antenna (Model: DFUP2070ZA(1))

(0.7dBi max 2.4GHz)

(1.61dBi max 5.15-5.35GHz)

(2.36dBi max 5.50-5.70GHz)

(2.3dBi max 5.700-5.825GHz)

WLAN Aux TX/RX Antenna: PIFA Antenna (Model : DFUP2070ZA(2))

(1.54dBi max 2.4GHz)

(3.02dBi max 5.15-5.35GHz)

(4.8dBi max 5.50-5.70GHz)

(3.85dBi max 5.700-5.825GHz)

Bluetooth TX/RX Antenna: Inverted-F type Antenna

(-0.34 dBi max)

WWAN Main TX/RX Antenna: Pattern Antenna (Model: DFUP2071ZA(1))

(0.1 dBi max 850MHz)

(0.17 dBi max 1900MHz)

(0.53 dBi max LTE Band 4)

(-1.39 dBi max LTE Band 17)

WWAN Aux RX Antenna: Pattern Antenna (RX only)

RFID Antenna: Loop Antenna