

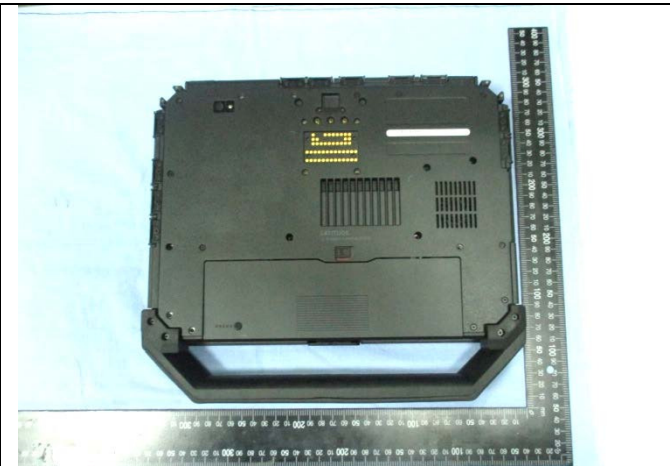
# FCC SAR Test Report

## <Photographs of EUT>

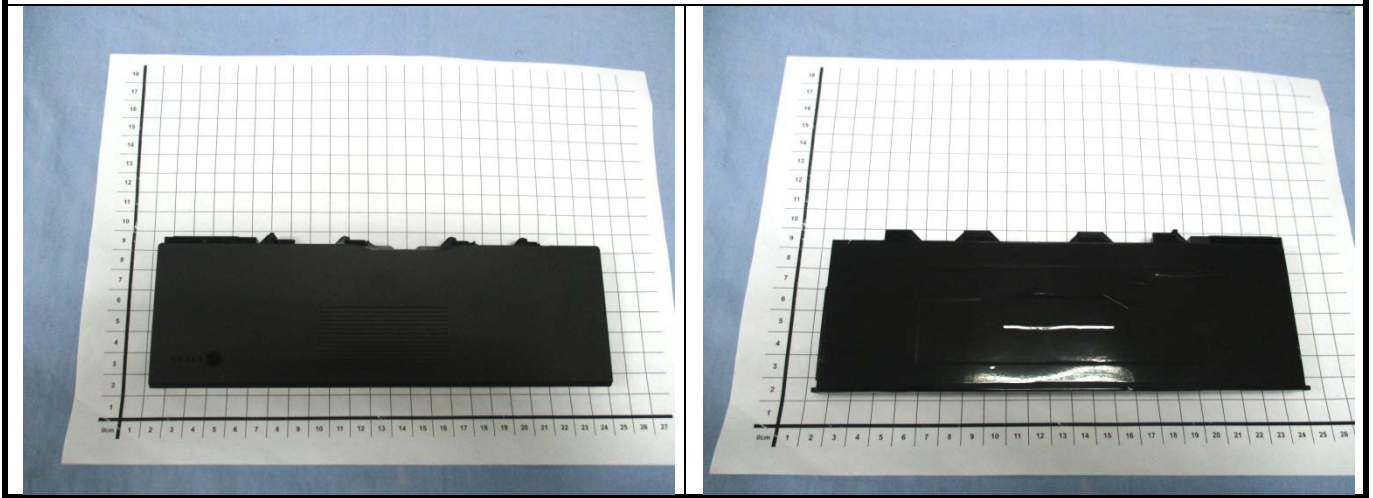
Tablet PC Mode



Laptop PC Mode



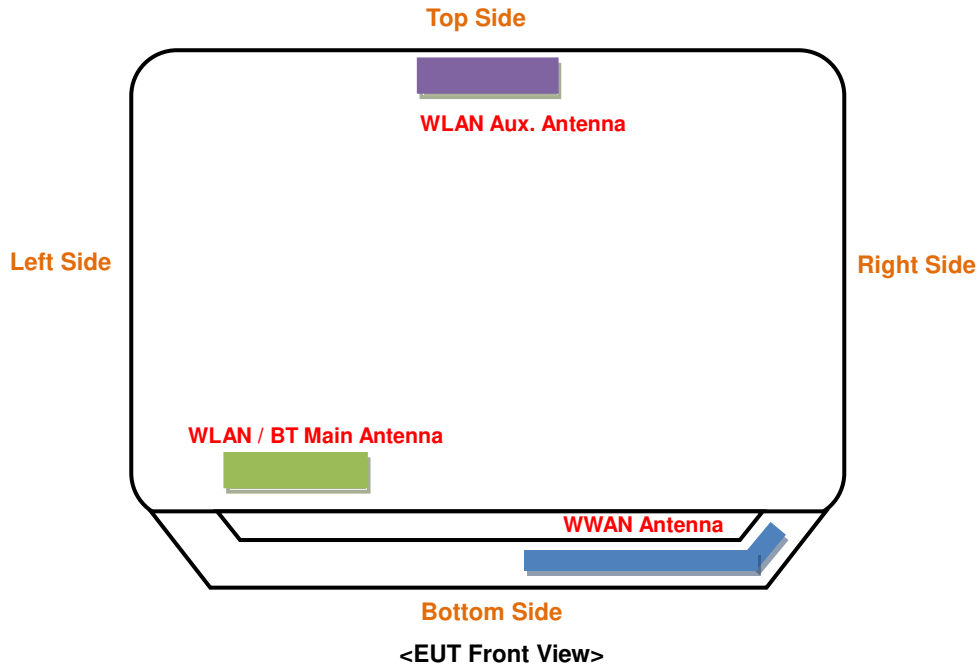
Battery



# FCC SAR Test Report

## <Antenna Location>

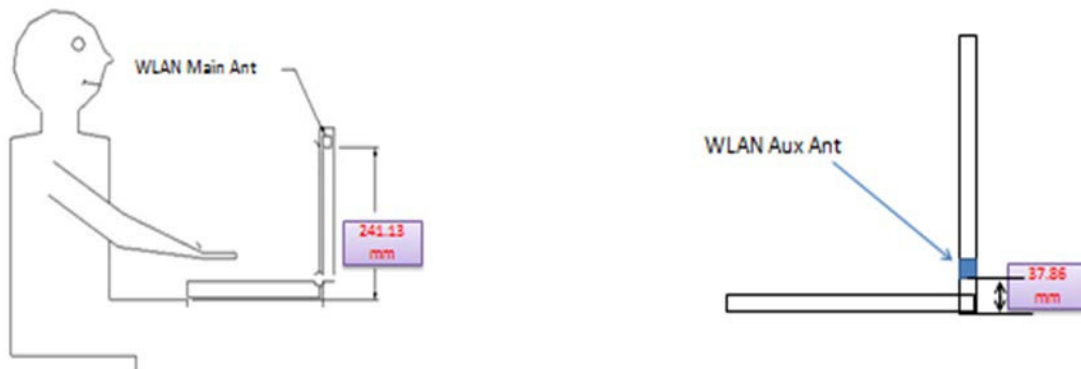
### Tablet PC



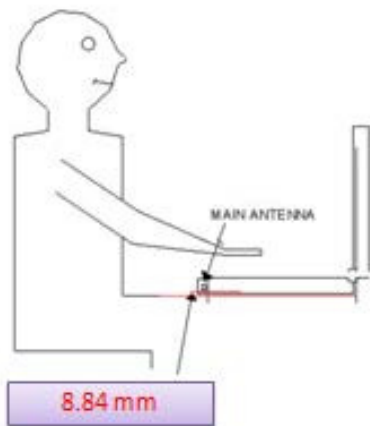
The separation distance for antenna to edge:

Antenna	To Top Side (mm)	To Bottom Side (mm)	To Left Side (mm)	To Right Side (mm)
WWAN	274.3	9.1	115.49	17.1
WLAN / BT Main	213.5	50	32.37	217.27
WLAN Aux.	5.3	264.6	139.79	139.77

### Laptop PC

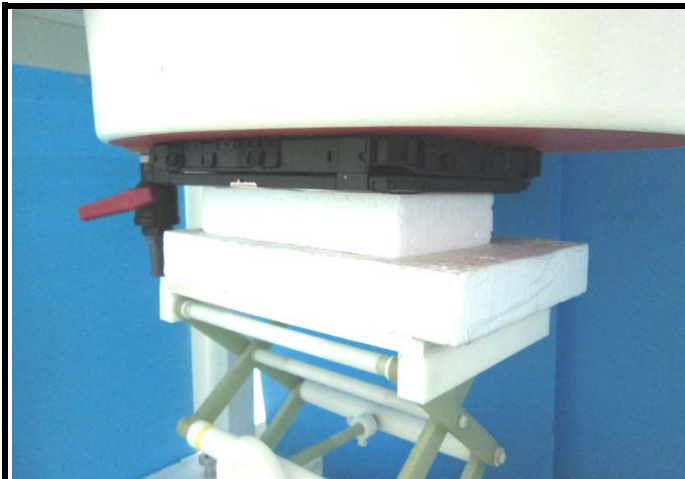


# FCC SAR Test Report



## <Photographs of SAR Setup>

### Tablet PC



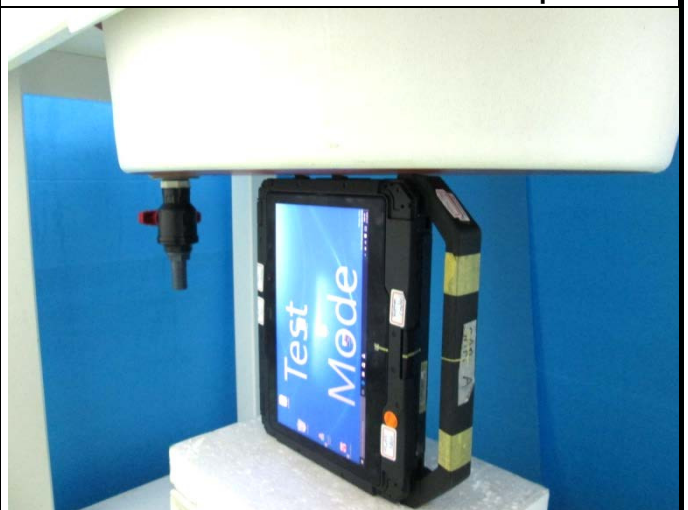
Rear Face of EUT with 0 cm Gap



Rear Face of EUT with 0.6 cm Gap



Left Side of EUT with 0 cm Gap



Right Side of EUT with 0 cm Gap



# FCC SAR Test Report



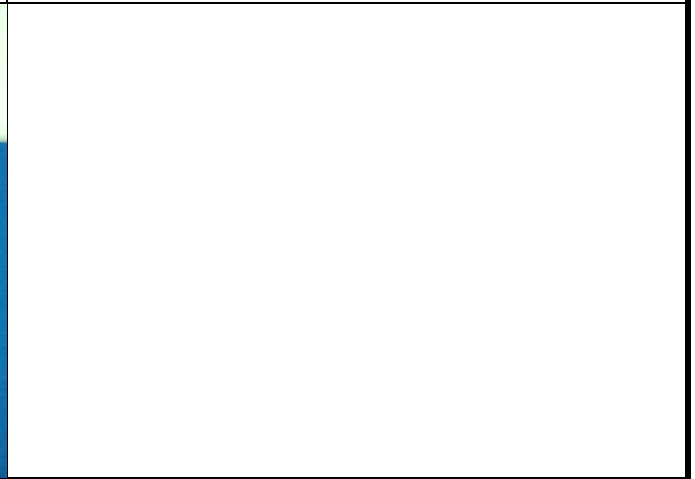
Bottom Side of EUT with 0 cm Gap



Bottom Side of EUT with 1 cm Gap



Top Side of EUT with 0 cm Gap



## Laptop PC



Bottom Side of EUT with 0 cm Gap