

Test Laboratory: UL CCS SAR Lab C

WiFi

Communication System: IEEE 802.11b/g/n 2.4 GHz Band; Frequency: 2437 MHz; Duty Cycle: 1:1
 Medium parameters used (interpolated): $f = 2437$ MHz; $\sigma = 1.96$ mho/m; $\epsilon_r = 52.355$; $\rho = 1000$ kg/m³
 Phantom section: Flat Section

Room Ambient Temperature: 24.0 deg. C; Liquid Temperature: 23.0 deg. C

DASY5 Configuration:

- Area Scan setting - Find Secondary Maximum Within: 2.0 dB and with a peak SAR value greater than 0.0012W/kg
- Probe: EX3DV4 - SN3772; ConvF(6.41, 6.41, 6.41); Calibrated: 5/3/2011
- Sensor-Surface: 2.5mm (Mechanical Surface Detection)
- Electronics: DAE4 Sn1239; Calibrated: 10/18/2011
- Phantom: ELI v4.0 (B); Type: QDOVA001BB; Serial: 1121
- Measurement SW: DASY52, Version 52.6 (2); SEMCAD X Version 14.4.5 (3634)

Front/M ch/Area Scan (71x101x1): Measurement grid: dx=15mm, dy=15mm

[Info: Interpolated medium parameters used for SAR evaluation.](#)

Maximum value of SAR (interpolated) = 0.218 mW/g

Front/M ch/Zoom Scan (5x5x7)/Cube 0: Measurement grid: dx=8mm, dy=8mm, dz=5mm

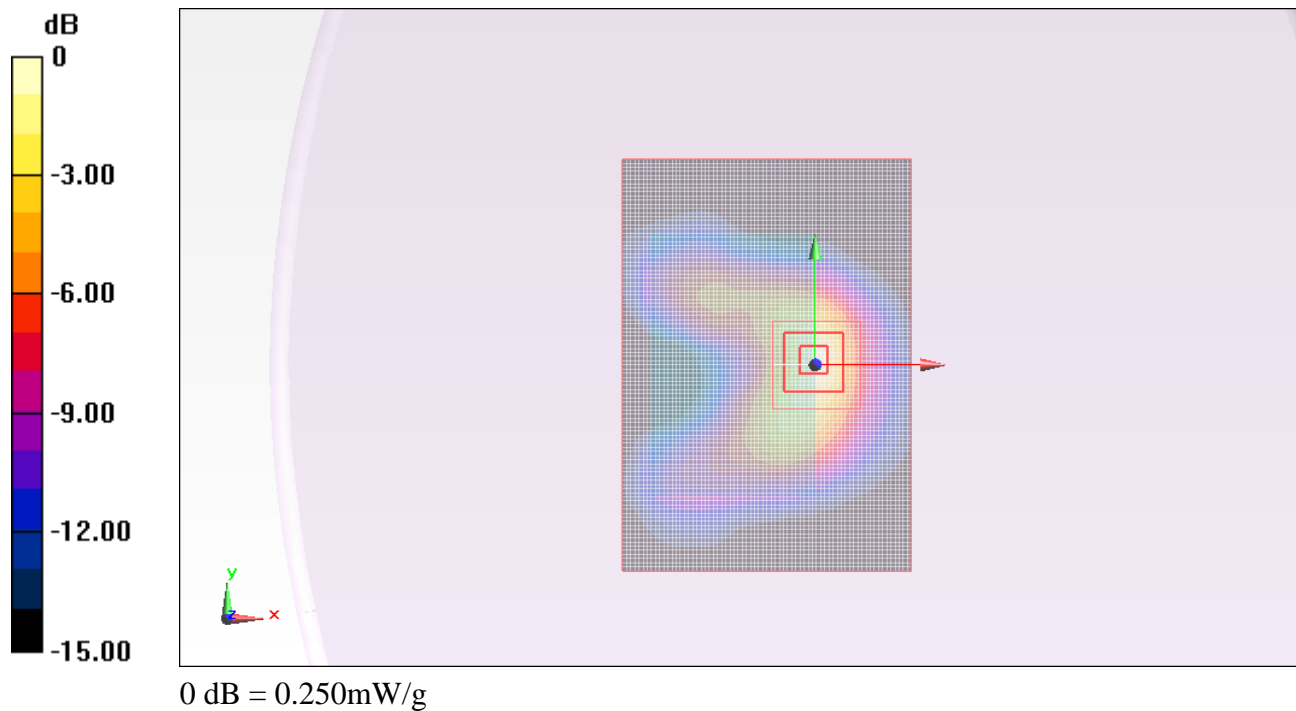
Reference Value = 10.294 V/m; Power Drift = -0.13 dB

Peak SAR (extrapolated) = 0.367 W/kg

SAR(1 g) = 0.183 mW/g; SAR(10 g) = 0.090 mW/g

[Info: Interpolated medium parameters used for SAR evaluation.](#)

Maximum value of SAR (measured) = 0.253 mW/g



WiFi

Frequency: 2437 MHz; Duty Cycle: 1:1; Room Ambient Temperature: 24.0°C; Liquid Temperature: 23.0°C
 Medium parameters used (interpolated): $f = 2437$ MHz; $\sigma = 1.882$ mho/m; $\epsilon_r = 52.007$; $\rho = 1000$ kg/m³

DASY5 Configuration:

- Electronics: DAE4 Sn1239; Calibrated: 10/18/2011
- Probe: EX3DV4 - SN3751; ConvF(6.62, 6.62, 6.62); Calibrated: 12/19/2011
- Sensor-Surface: 2.5mm (Mechanical Surface Detection (Locations From Previous Scan Used)), Sensor-Surface: 2.5mm (Mechanical Surface Detection)
- Phantom: ELI v5.0 (A); Type: QDOVA001BB; Serial: 1117

Rear/M ch/Area Scan (71x101x1): Measurement grid: dx=15mm, dy=15mm

[Info: Interpolated medium parameters used for SAR evaluation.](#)

Maximum value of SAR (interpolated) = 0.037 mW/g

Rear/M ch/Zoom Scan (5x5x7)/Cube 0: Measurement grid: dx=8mm, dy=8mm, dz=5mm

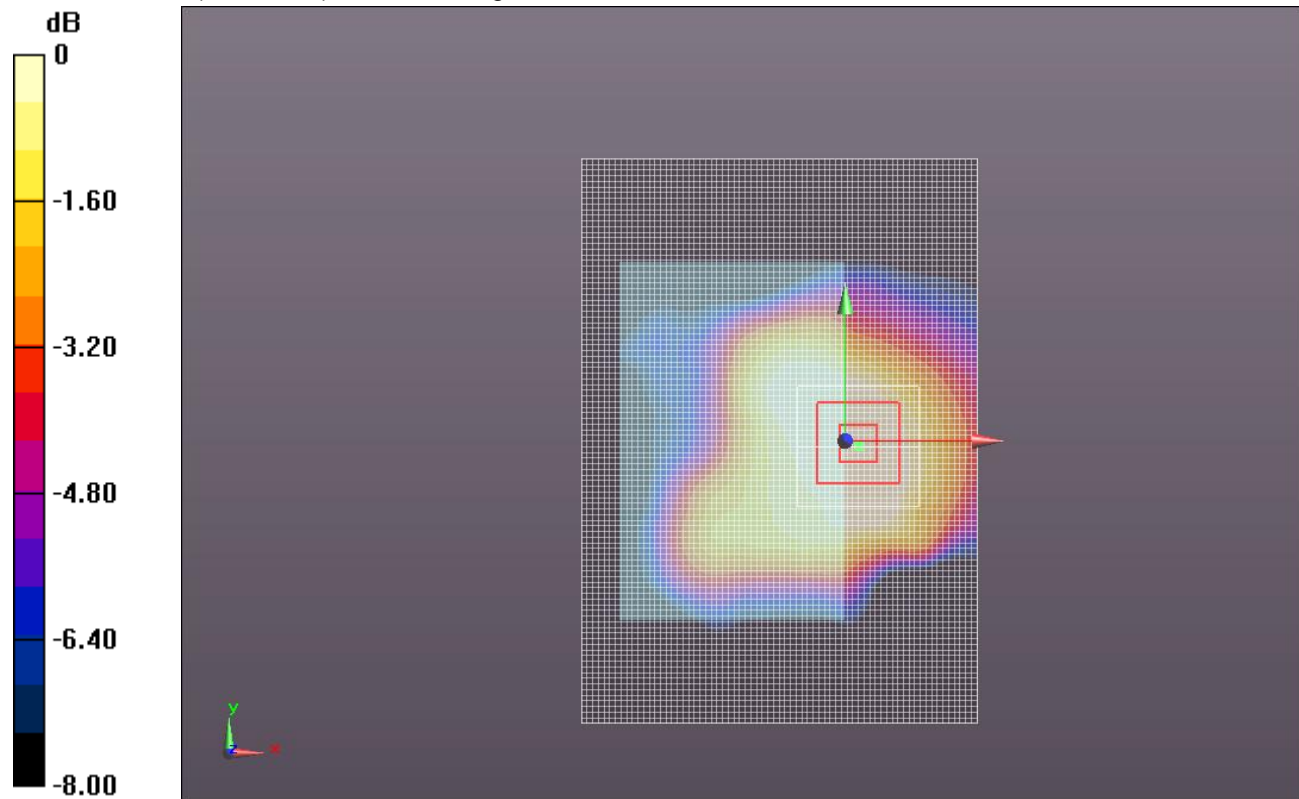
Reference Value = 4.257 V/m; Power Drift = 0.13 dB

Peak SAR (extrapolated) = 0.0470

SAR(1 g) = 0.027 mW/g; SAR(10 g) = 0.016 mW/g

[Info: Interpolated medium parameters used for SAR evaluation.](#)

Maximum value of SAR (measured) = 0.034 mW/g



0 dB = 0.030mW/g = -30.46 dB mW/g

Test Laboratory: UL CCS SAR Lab C

WiFi

Communication System: IEEE 802.11b/g/n 2.4 GHz Band; Frequency: 2437 MHz; Duty Cycle: 1:1
 Medium parameters used (interpolated): $f = 2437$ MHz; $\sigma = 1.96$ mho/m; $\epsilon_r = 52.355$; $\rho = 1000$ kg/m³
 Phantom section: Flat Section

Room Ambient Temperature: 24.0 deg. C; Liquid Temperature: 23.0 deg. C

DASY5 Configuration:

- Area Scan setting - Find Secondary Maximum Within: 2.0 dB and with a peak SAR value greater than 0.0012W/kg
- Probe: EX3DV4 - SN3772; ConvF(6.41, 6.41, 6.41); Calibrated: 5/3/2011
- Sensor-Surface: 2.5mm (Mechanical Surface Detection)
- Electronics: DAE4 Sn1239; Calibrated: 10/18/2011
- Phantom: ELI v4.0 (B); Type: QDOVA001BB; Serial: 1121
- Measurement SW: DASY52, Version 52.6 (2);SEMCAD X Version 14.4.5 (3634)

Edge 1/M ch/Area Scan (71x101x1): Measurement grid: dx=15mm, dy=15mm

[Info: Interpolated medium parameters used for SAR evaluation.](#)

Maximum value of SAR (interpolated) = 0.320 mW/g

Edge 1/M ch/Zoom Scan (5x5x7)/Cube 0: Measurement grid: dx=8mm, dy=8mm, dz=5mm

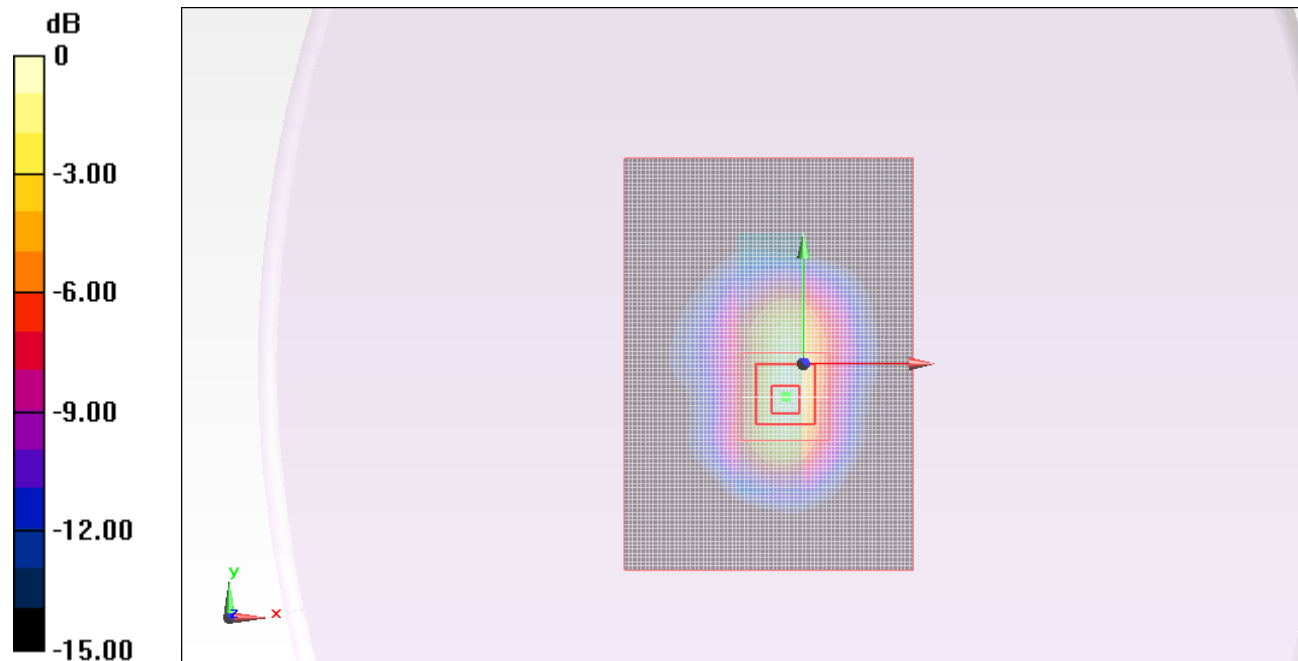
Reference Value = 12.749 V/m; Power Drift = -0.04 dB

Peak SAR (extrapolated) = 0.475 W/kg

SAR(1 g) = 0.230 mW/g; SAR(10 g) = 0.111 mW/g

[Info: Interpolated medium parameters used for SAR evaluation.](#)

Maximum value of SAR (measured) = 0.330 mW/g



0 dB = 0.330mW/g

Test Laboratory: UL CCS SAR Lab C

WiFi

Communication System: IEEE 802.11b/g/n 2.4 GHz Band; Frequency: 2437 MHz; Duty Cycle: 1:1

Edge 1/M ch/Z Scan (1x1x21): Measurement grid: dx=20mm, dy=20mm, dz=5mm

[Info: Interpolated medium parameters used for SAR evaluation.](#)

Maximum value of SAR (measured) = 0.312 mW/g

