

Test Laboratory: Compliance Certification Services

D1800V2 SN294_120303

DUT: Dipole 1800 MHz; Type: D1800V2; Serial: 294

Program Name: System Performance Check at 1800 MHz

Ambient Temperature: 24.5 deg C; Liquid Temperature: 23.0 deg C

Communication System: CW; Frequency: 1800 MHz; Duty Cycle: 1:1

Medium: Head 1800 MHz ($\sigma = 1.4486$ mho/m, $\epsilon_r = 39.9059$, $\rho = 1000$ kg/m³)

Phantom section: Flat Section

DASY4 Configuration:

- Probe: ES3DV2 - SN3021; ConvF(5.1, 5.1, 5.1); Calibrated: 7/29/2003
- Sensor-Surface: 4mm (Mechanical Surface Detection)
- Electronics: DAE3 Sn427; Calibrated: 2/4/2003
- Phantom: SAM 1; Type: SAM 1; Serial: 1185
- Measurement SW: DASY4, V4.1 Build 47; Postprocessing SW: SEMCAD, V1.8 Build 62

d=10mm; Pin=250mW/Area Scan (7x7x1): Measurement grid: dx=15mm, dy=15mm

Reference Value = 88 V/m

Power Drift = 0.0 dB

Maximum value of SAR = 8.44 mW/g

d=10mm; Pin=250mW/Zoom Scan (5x5x7) (5x5x7)/Cube 0: Measurement grid: dx=7.5mm, dy=7.5mm, dz=5mm

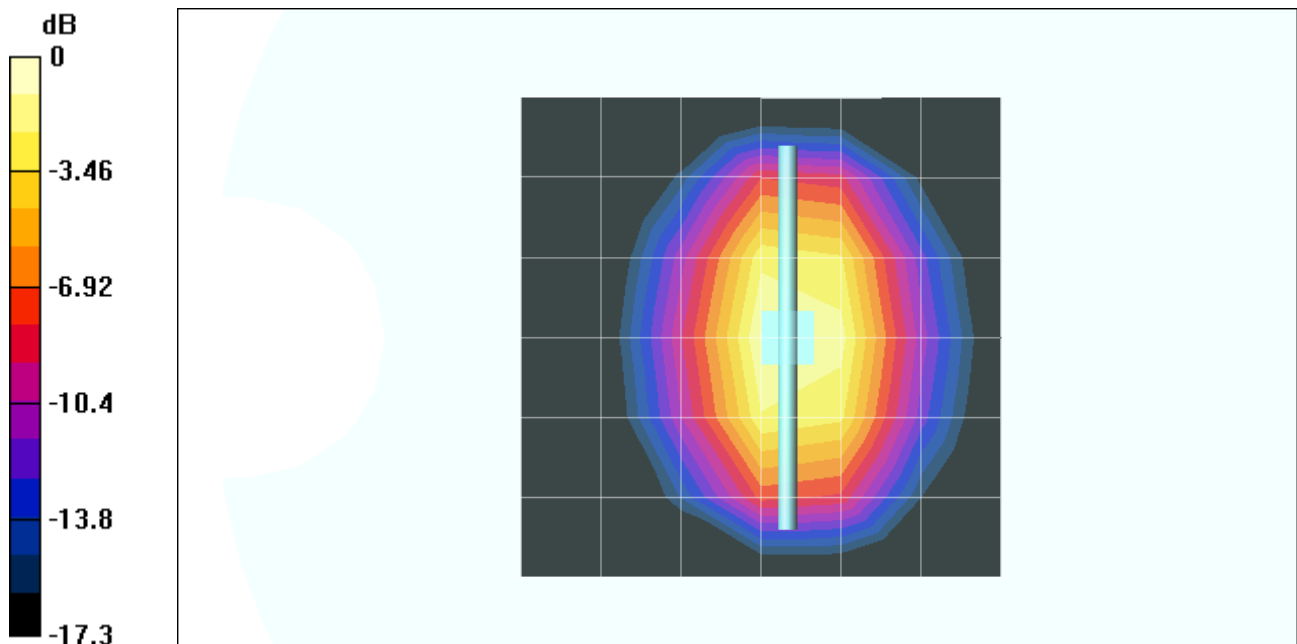
Peak SAR (extrapolated) = 17.1 W/kg

SAR(1 g) = 9.46 mW/g; SAR(10 g) = 4.96 mW/g

Reference Value = 88 V/m

Power Drift = 0.0 dB

Maximum value of SAR = 10.7 mW/g



0 dB = 10.7mW/g

Test Laboratory: Compliance Certification Services

D1800V2 SN294_120203

DUT: Dipole 1800 MHz; Type: D1800V2; Serial: 294

DASY4 Configuration:

- Probe: ES3DV2 - SN3021; ConvF(5.1, 5.1, 5.1); Calibrated: 7/29/2003
- Sensor-Surface: 0mm (Fix Surface)
- Electronics: DAE3 Sn427; Calibrated: 2/4/2003
- Phantom: SAM 1; Type: SAM 1; Serial: 1185
- Measurement SW: DASY4, V4.1 Build 47; Postprocessing SW: SEMCAD, V1.8 Build 62

d=10mm; Pin=250mW/Z Scan (1x1x51): Measurement grid: dx=20mm, dy=20mm, dz=2mm

Reference Value = 88 V/m

Power Drift = 0.0 dB

Maximum value of SAR = 15.5 mW/g

