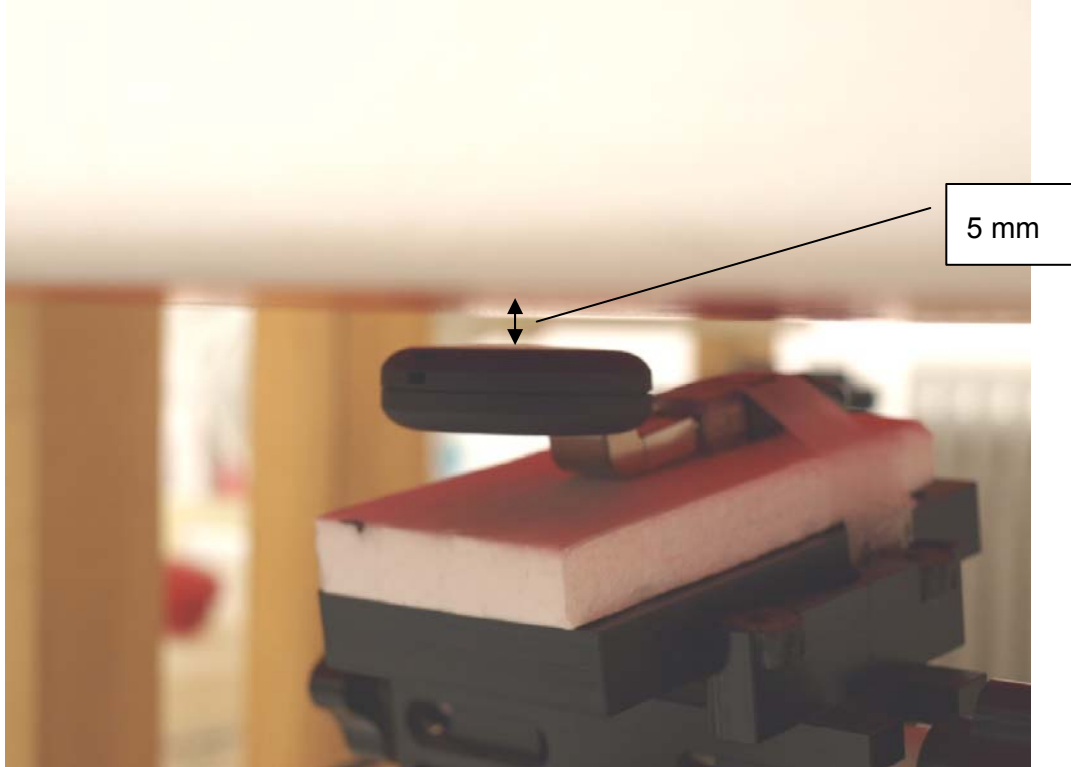


18. PRELIMINARY SAR EVALUATION

Preliminary SAR test results for various degrees with the USB **Horizontal-Up (Connector A)** and **Horizontal-Down (Connector B)** orientation to determine the worst-case SAR configuration

This USB dongle position of orientation is limited by the hinge detent for 100 degree, 130 degree and 150° max. By reviewing the various positions, when the EUT is rotated at 150 degree/Connector B /Side A faced parallel with flat phantom with 5 mm separation distance, WiMAX has highest SAR value due to this is closest distance to the end user. (SAR report no: 09U12929-8C, this report)

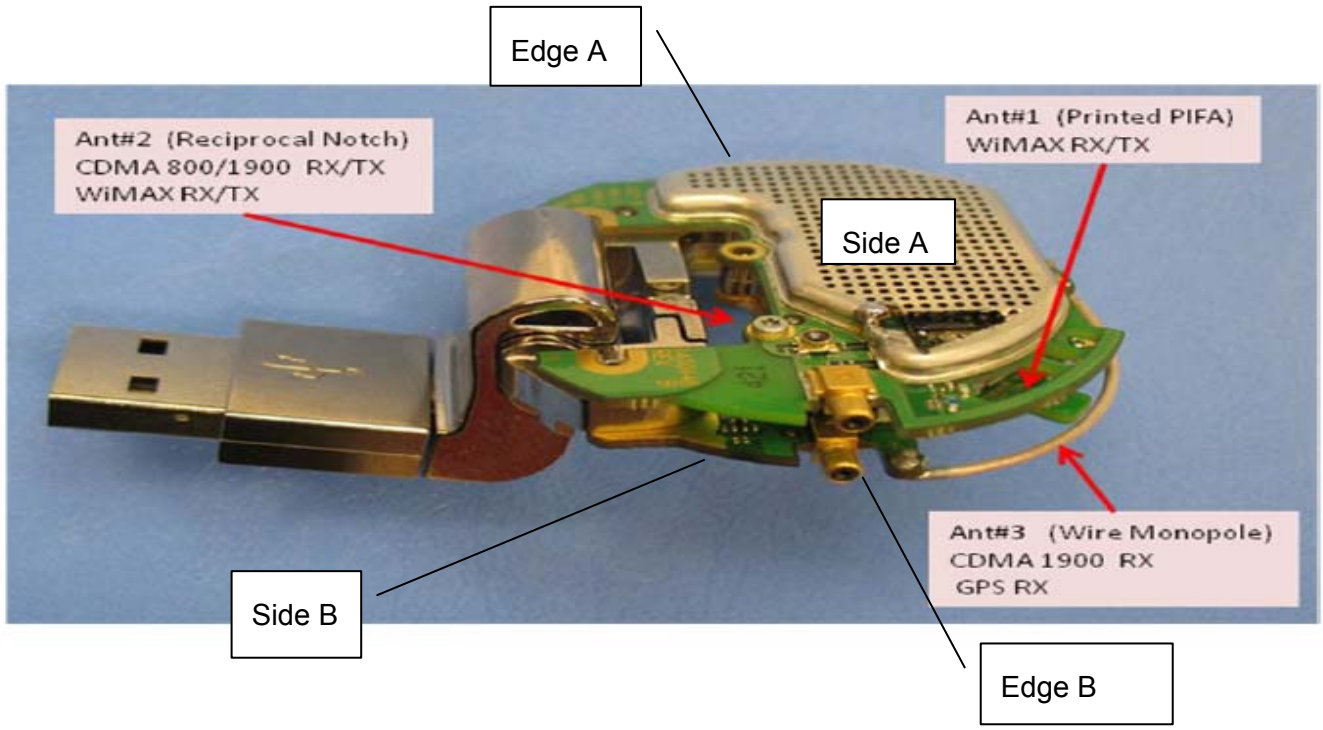
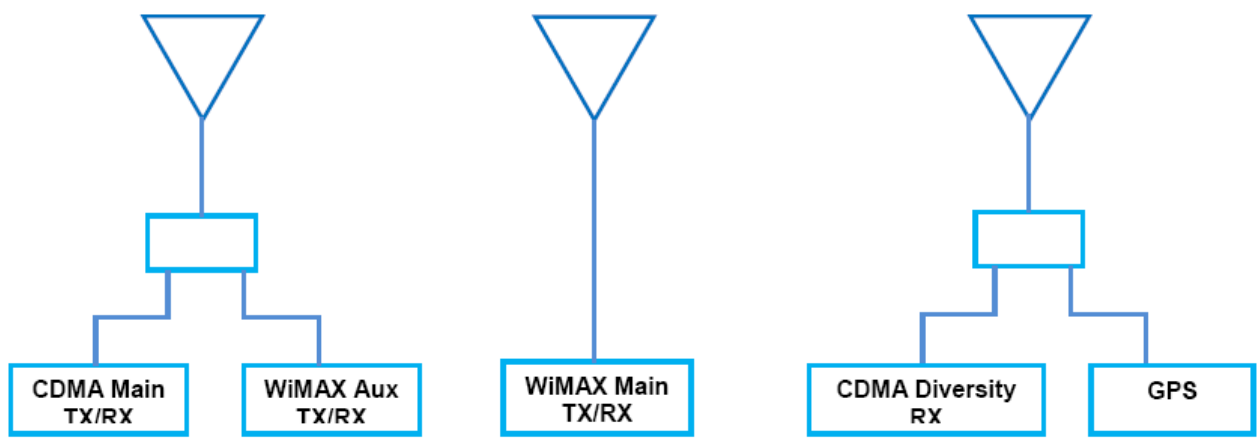
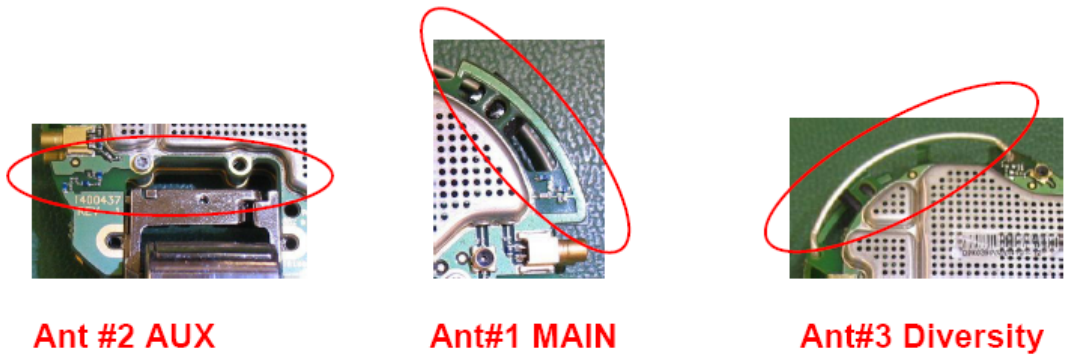
USB Horizontal-Down(connector B)/Side A/Parallel 5 mm with flat phantom



(WiMAX Worst-case Test Configuration)

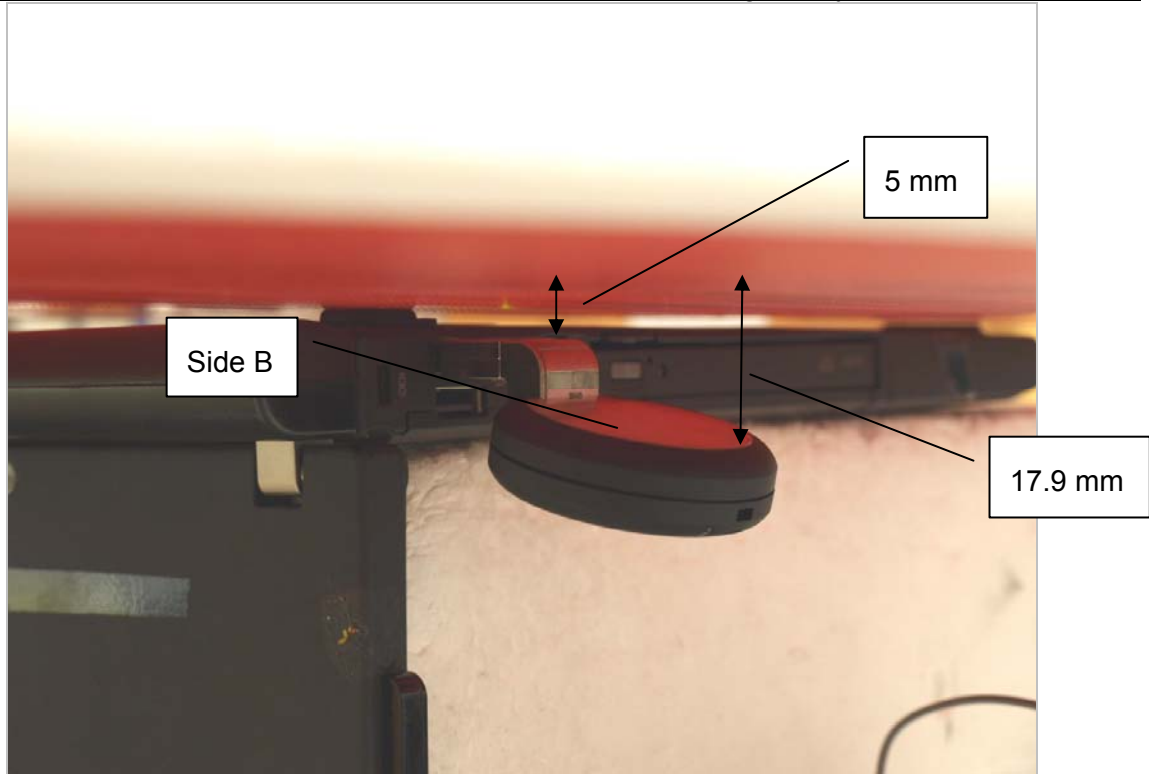
Part 27/5 MHz/16QAM/Low Channel: 1.19W/kg / ANT1
Part 27/ 5MHz/16QAM/Middle Channel: 0.54W/kg /ANT 2

19. ANTENNA LOCATION DIAGRAM



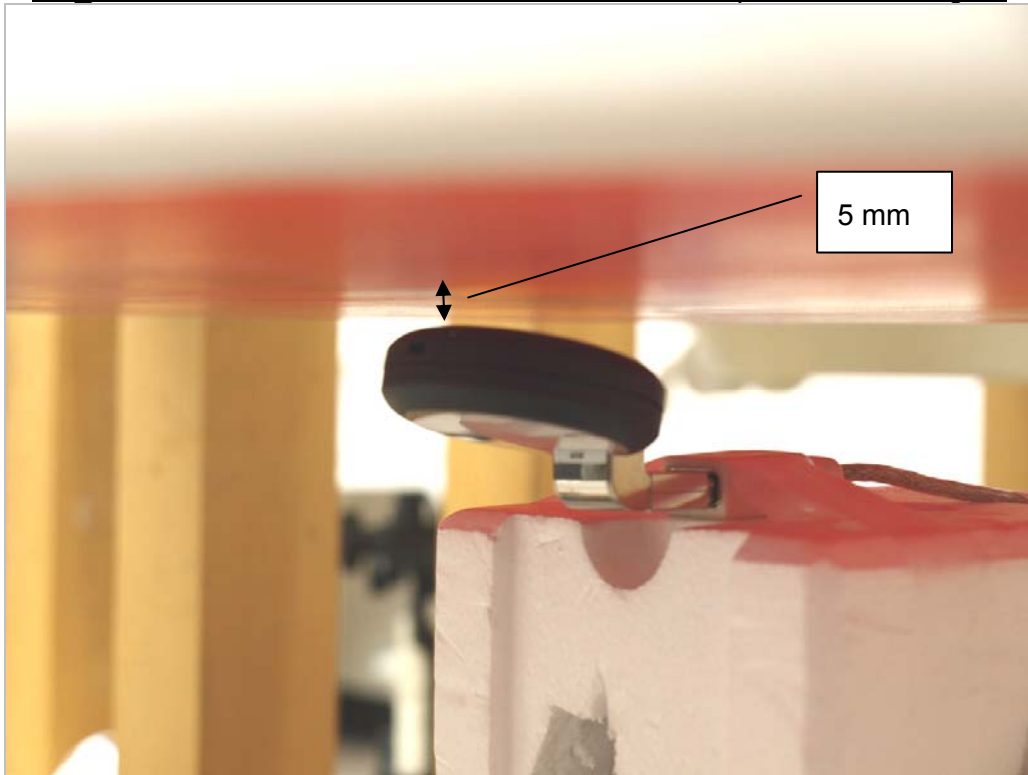
20. TEST SETUP PHOTO

1 HORIZONTAL-UP/Connector A/Side B faced phantom/150 degree/ Typical End-use Position



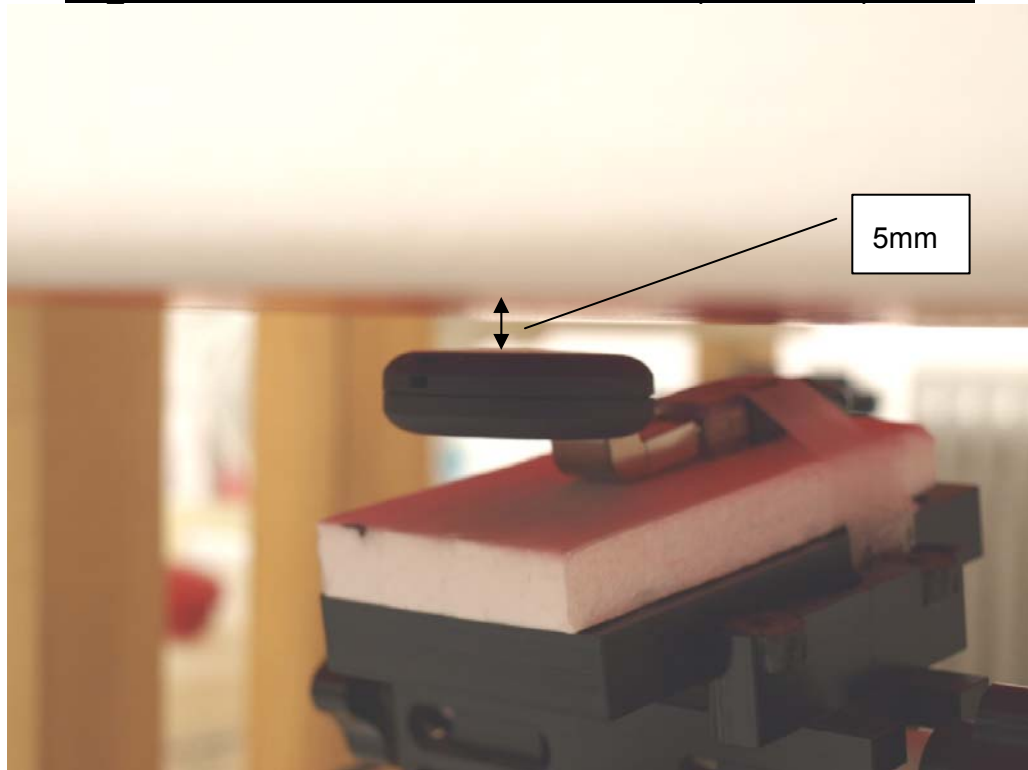
Setup Picture #1/Laptop is in direct contact with the phantom

2-1_HORIZONTAL-DOWN/Connector B/Side A faced phantom/150 degree



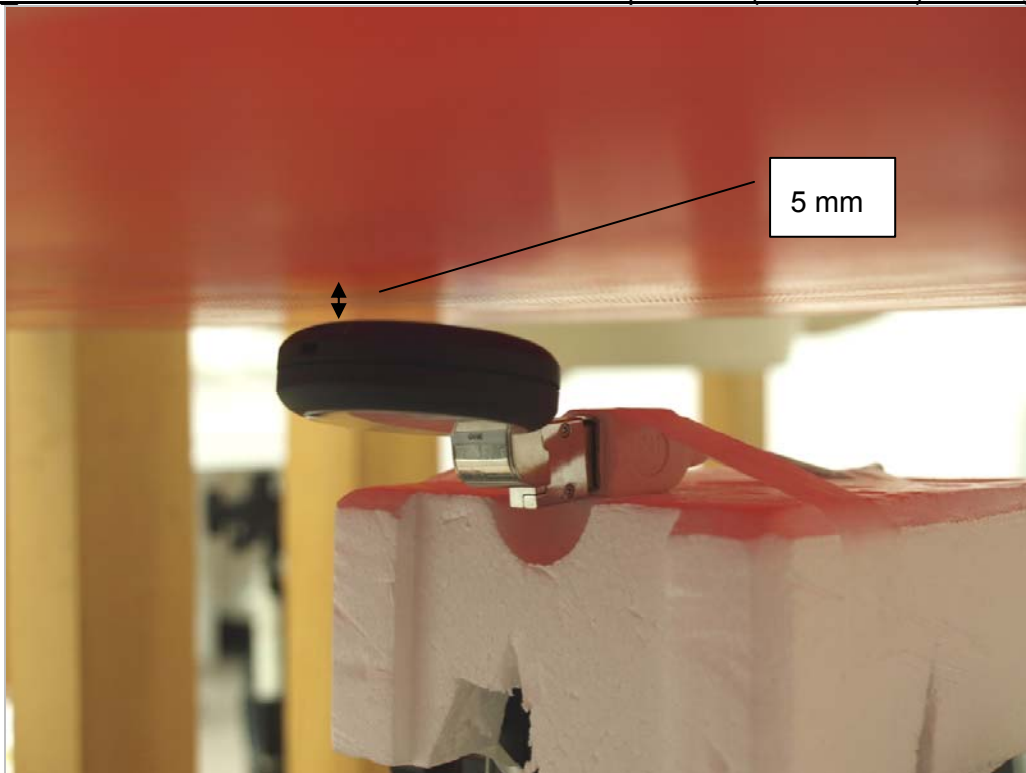
Setup Picture #2

2-2_HORIZONTAL-DOWN/Connector B/ Side A parallel with phantom



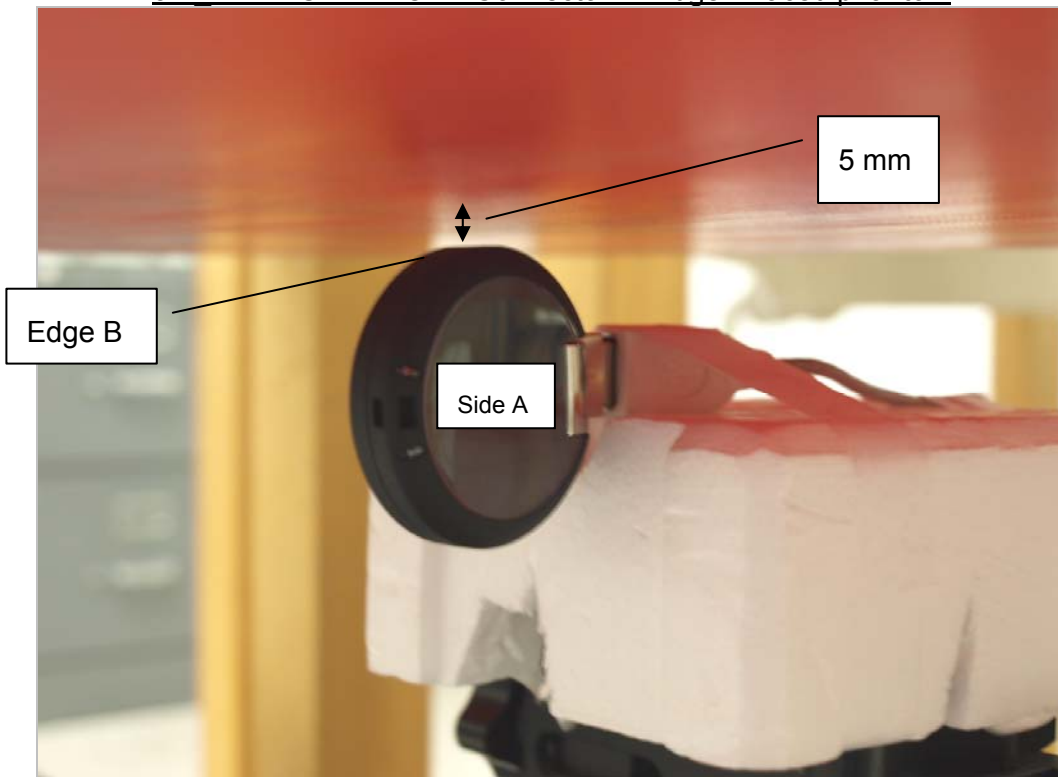
Setup Picture #3

3-1_VERTICAL-FRONT/Connector C/Side A faced phantom (Worst-Case)/150 degree



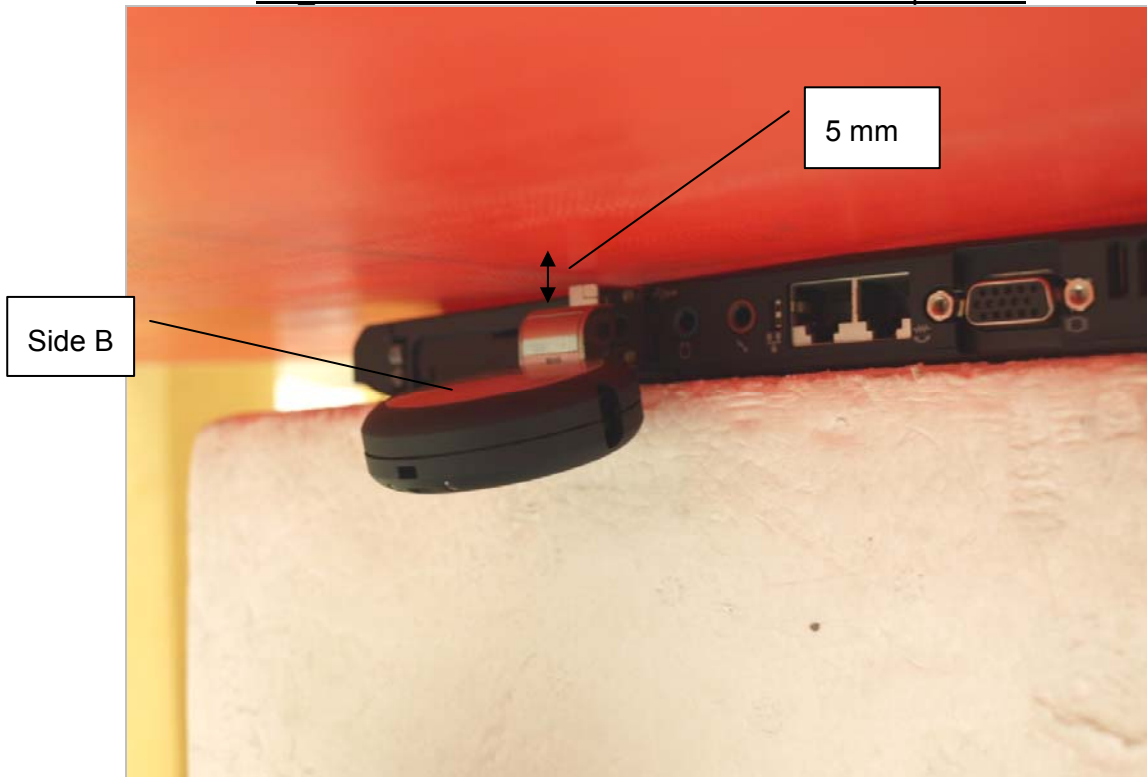
Setup Picture #4

3-2_VERTICAL-FRONT/Connector B/ Edge B faced phantom



Setup Picture #5

4-1_VERTICAL-BACK/Connector D/ Side B faced phantom



Setup Picture#6

4-2_VERTICAL-BACK/ Connector D/ Edge A faced phantom



Setup Picture #7

21. EUT EXTERNAL PHOTO

USB - Horizontal (100° degrees)



USB - Horizontal (130° degrees)



USB – Horizontal-up (150° degrees)



USB – Horizontal-down (150° degrees)



USB – Vertical-up (150° degrees)



USB – Vertical-down (150° degrees)



END OF REPORT