

Battery Cavity, location of labels.

Model RD02-0330
 852B-RD02D330
 MM01BRD02D330

GNX-RD02-0330

ANATEL
 0450 - 07 - 1675

NTC
 Type Approved
 No: ESD-CPE-0801233


 (01) 07893552001136

TELEPERMIT
 This Conaxant RD02-0460
 PSTN Modem may be
 connected to the Telecom
 Network.
 PTC: 211 / 05 / 082

RN = 1

型号: RD02-0330


 制造地: 中国

SUBTEL 3770
 CNC- 54-4512

NOM
 NYCE

Approved by
 RTA
 2006 Year

TE-2005/189
 I C S A
 APPROVED

SCT TTDCORD06-597

 CCAB06M10010T1

03005/POSTEL/2006
 2025


CMA 1998
AT622047 G


Contains Intel WLAN
 Radio Model 4965AGN MM1


Contains FCC ID: B944965AGN
 IC: 466Q-4965AGN

Complies with IDA
 Standards:
 DB 02941

This device complies with Part 15 of
 the FCC Rules. Operation is subject to
 the following two conditions:
 (1) This device may not cause harmful
 interference, and
 (2) this device must accept
 any interference received,
 including interference
 that may cause
 undesired operation.

 N51

 N232


 KELAS
 CMA 1998
 AN547223 C

CCA06LP0010T1



(輸入/輸入) INPUT: 18.5Vdc 3.5A



筆記型電腦/筆記本電腦
MODEL (型號/型号): HSTNN-W26C



This Class B digital apparatus
complies with Canadian ICES-003
Cet appareil numérique de la classe
B est conforme à la norme
MB-003 du Canada



Apparatus claims of U.S. Patent Nos. 4,631,603;
4,819,098; 4,907,093; 5,315,448; and 6,516,132.
licensed for limited viewing uses only

R33001



LISTED 7K85
Information
Technology
Equipment
E145483



HPK-HSTNN-W26C(B) 廢電池請回收



Product of China

中國製造/中國制造 CM-2



Wireless label, behind door

60.4R810.001 MV1
070609 CTC

Broadcom BCM92045NMD
379191-002

02E11POSTEL2005 1921	2.4GHz	2233	Complies with IDA Standards DA102885
-------------------------	--------	------	--

Contains FCC ID: Q05-BRCM1018
IC: 4324A-BRCM1018
SCT: RCPBRBC05-734
CM II ID: 2005DJ0891
CNC: 16-4062

ANATEL
N12075
0960-05-1889

CE
TA-2008136
APPROVED

AP 101590 C

REPLACE WITH
HP SPARE
454685-001
910765

Broadcom BCM92045NMD
379191-002

43214A-PORTAL/3884 1891	2.4FH1	Z233	Complies with IDA Standards DA102889
----------------------------	--------	------	--

Contains FCC ID: QDS-BRCM1018
IC: 4324A-BRCM1018
SCT: RCPBRBC05-734
CM # ID: 2005DJ0891
CNC: 16-4062

 N12075
0860-05-1869


(01) 0789355200075-7

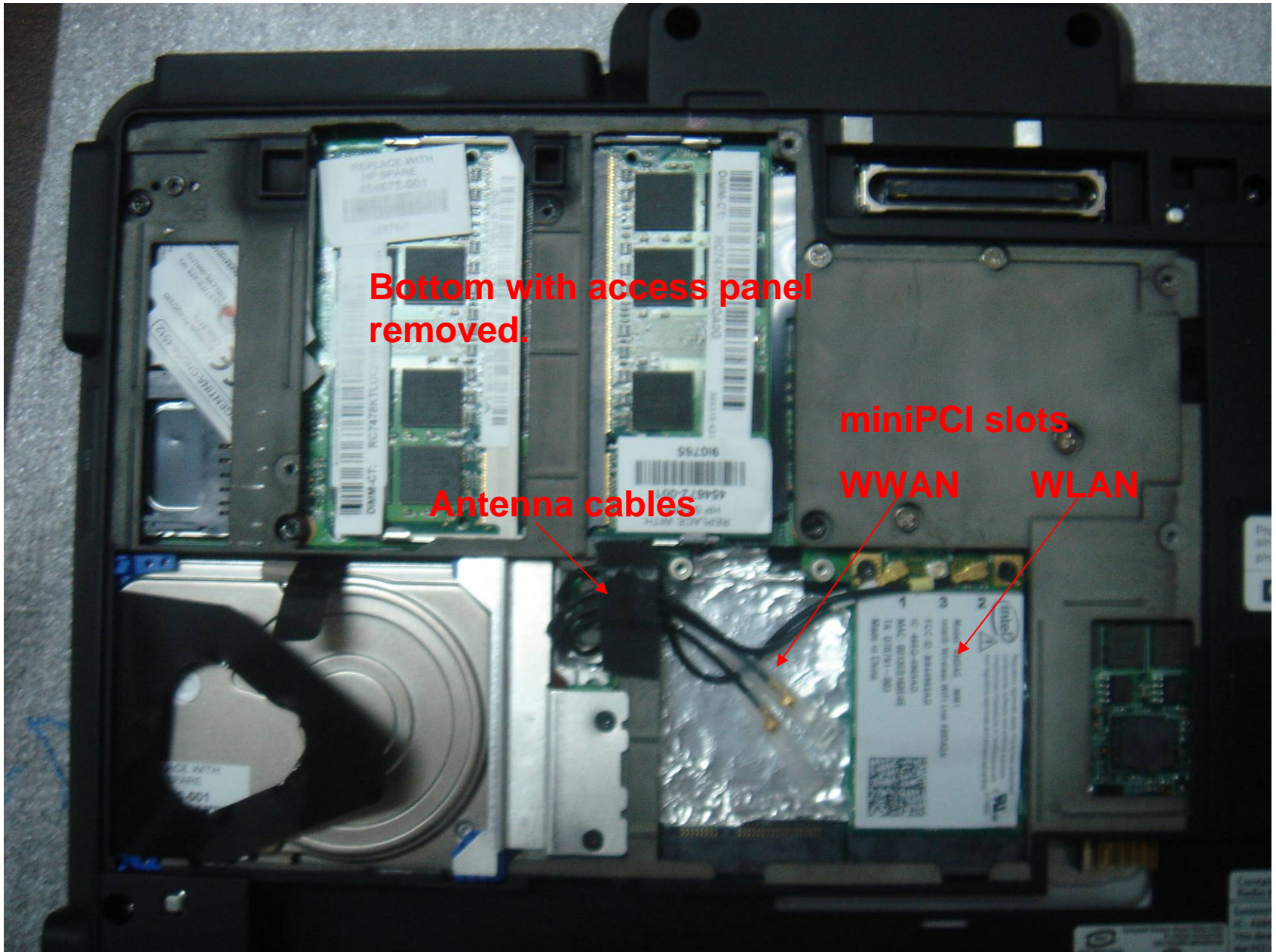
 

  AP 101590 C

REPLACE WITH
HP SPARE
454685-001



9i0765



Bottom with access panel removed.

Antenna cables

miniPCI slots

WWAN

WLAN




Regulatory approvals apply only to Intel authorized components, software and antenna solutions. Unauthorized installations or modifications will void regulatory approvals and product warranties. E178692  

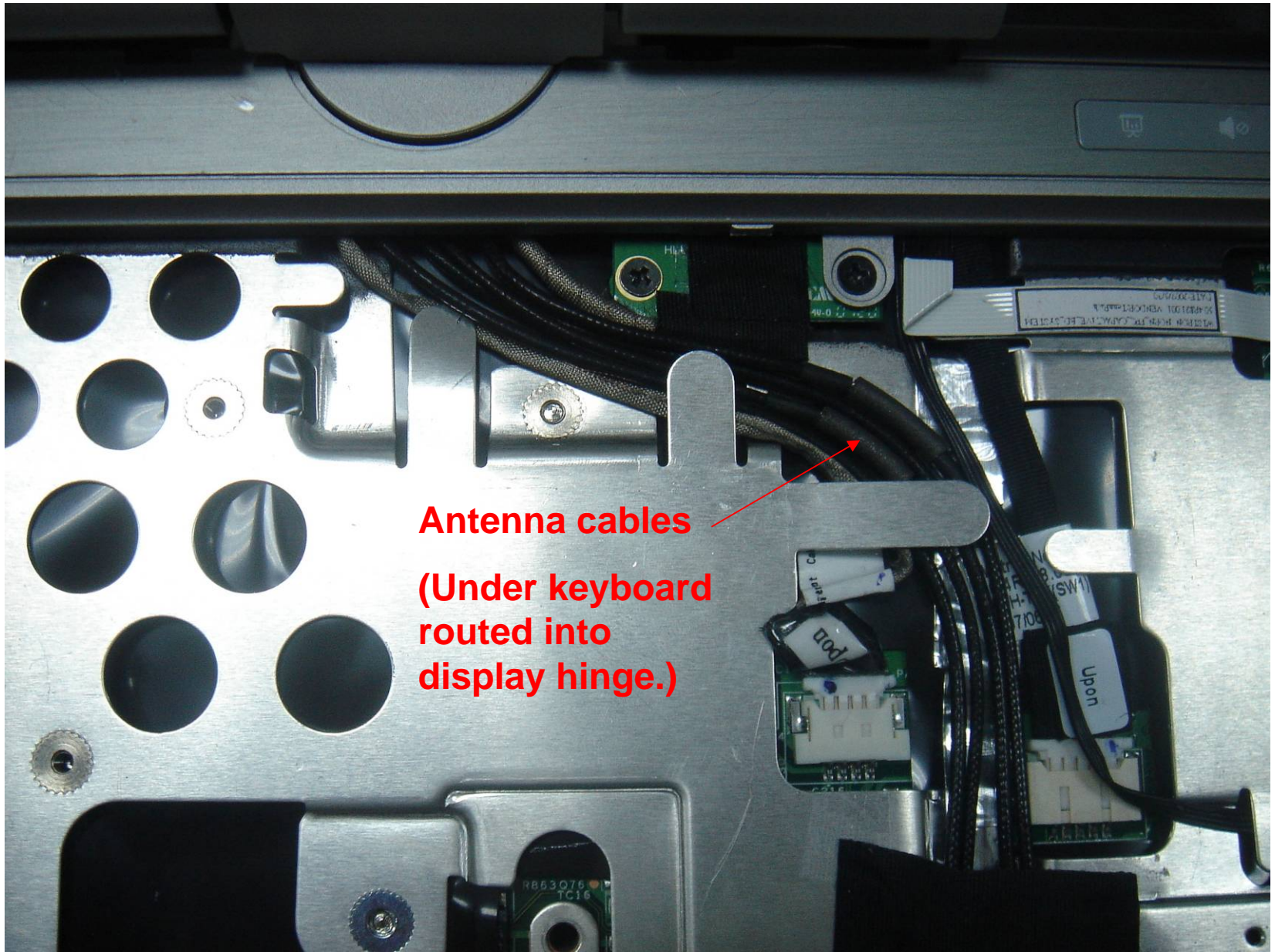
1 Model: 4965AG MM1
2 Intel® Wireless WiFi Link 4965AGN
3 FCC ID: B944965AG
IC: 466Q-4965AG
MAC: 0013E8168E49
TA: D78791 - 003
Made in China



REPLACE WITH
HP SPARE
454672-001



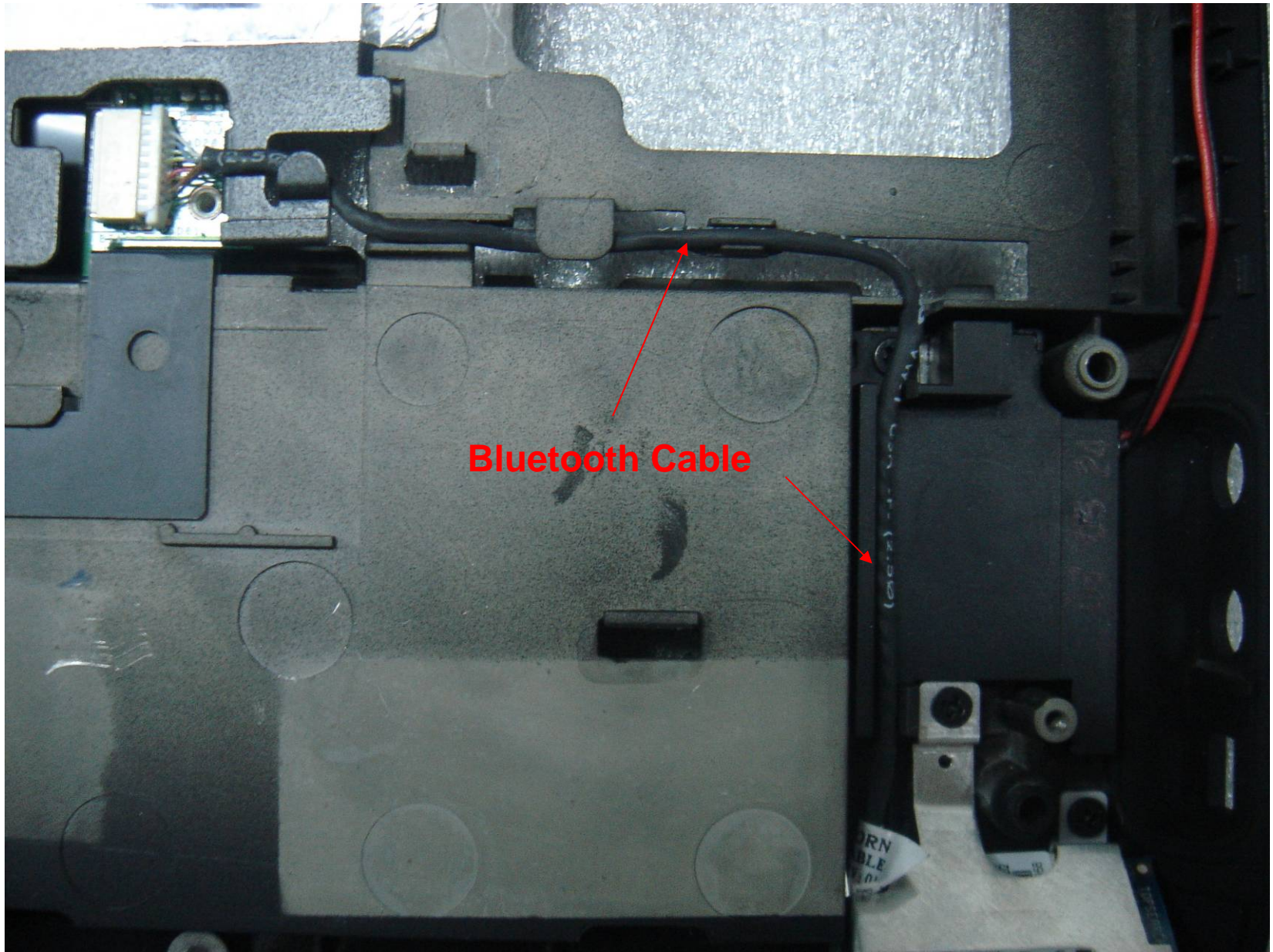
HP Confidential



Antenna cables
(Under keyboard
routed into
display hinge.)



HP Confidential

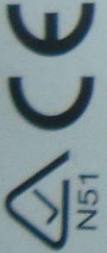


HP Confidential



SIM Card

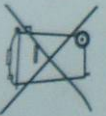
ARGENTINA:CNC54-4512



IC:3652B-RD02D330
Chile:3770



CERTIFICATE NO.
ESD-CPE-0601233



CCAB06M10010T1

TECWR/IMOD-08/02/113.NOV/05

CONEXANT
Model:RD02-D330



中国制造



1406-05-1575



05-5016 201



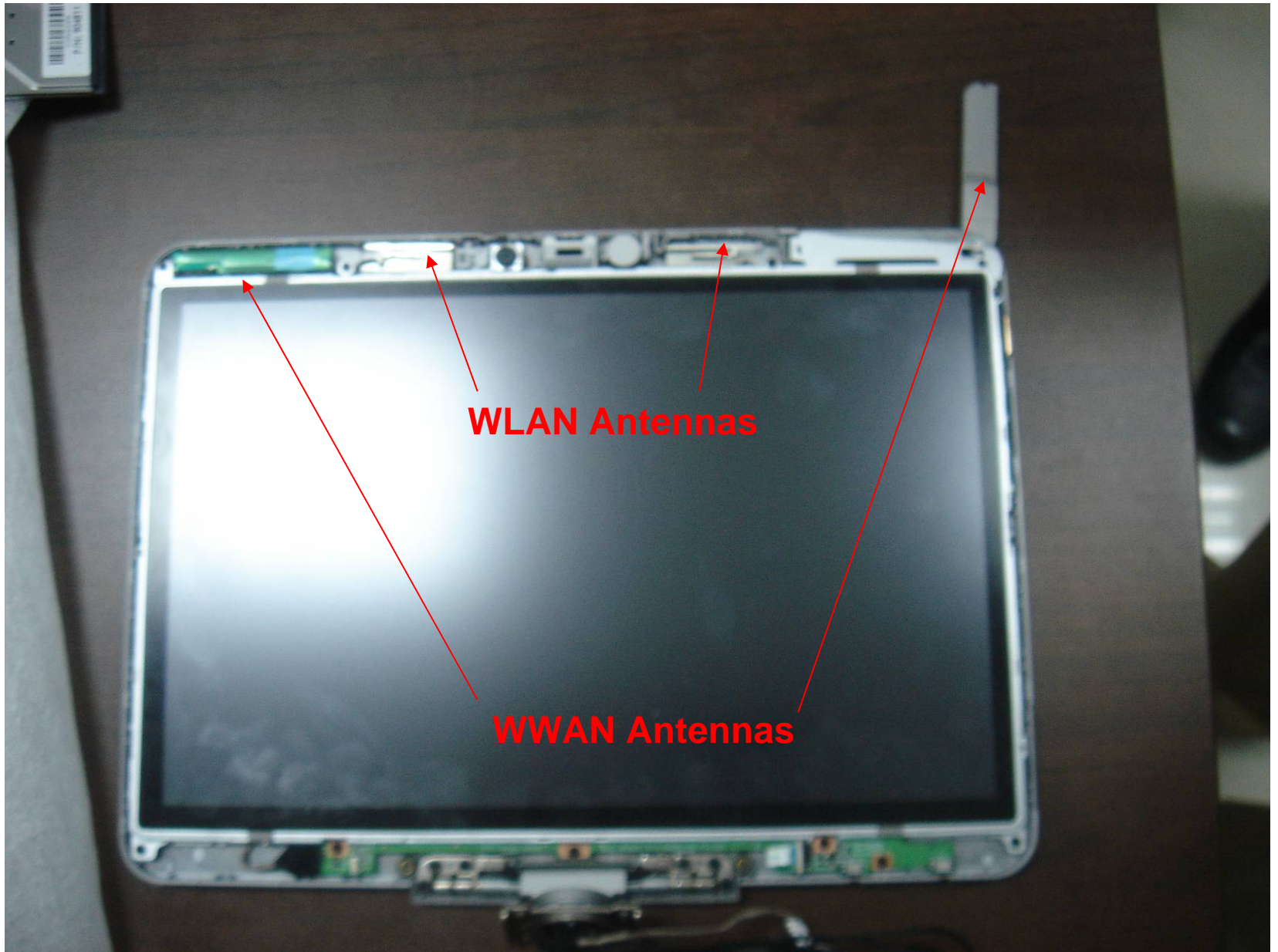
(01)07886349860825

Brand Name : Conexant
Model Name : RD02-D330
Paraguay Cert n - 2006-06-I-0002

2006 04127 -0 90133
2006 04127 -0 90133
1110574 1110573 1110574 203 203
08-5364818 : 113050
E902-D330 : 017
CONEXANT SYSTEMS INC 17331
35700 1110574 1110574
7-12856-0-102853 7:00 3:00 11:01N
13-12856-0-102856 1:00 1:00 11:01N

Tested to Comply
with FCC Standards
FCC
FOR HOME OR OFFICE USE
Trade Name : Conexant
Model Name : RD02-D330
US : CXSMMD1BRD02D330

Modem Label



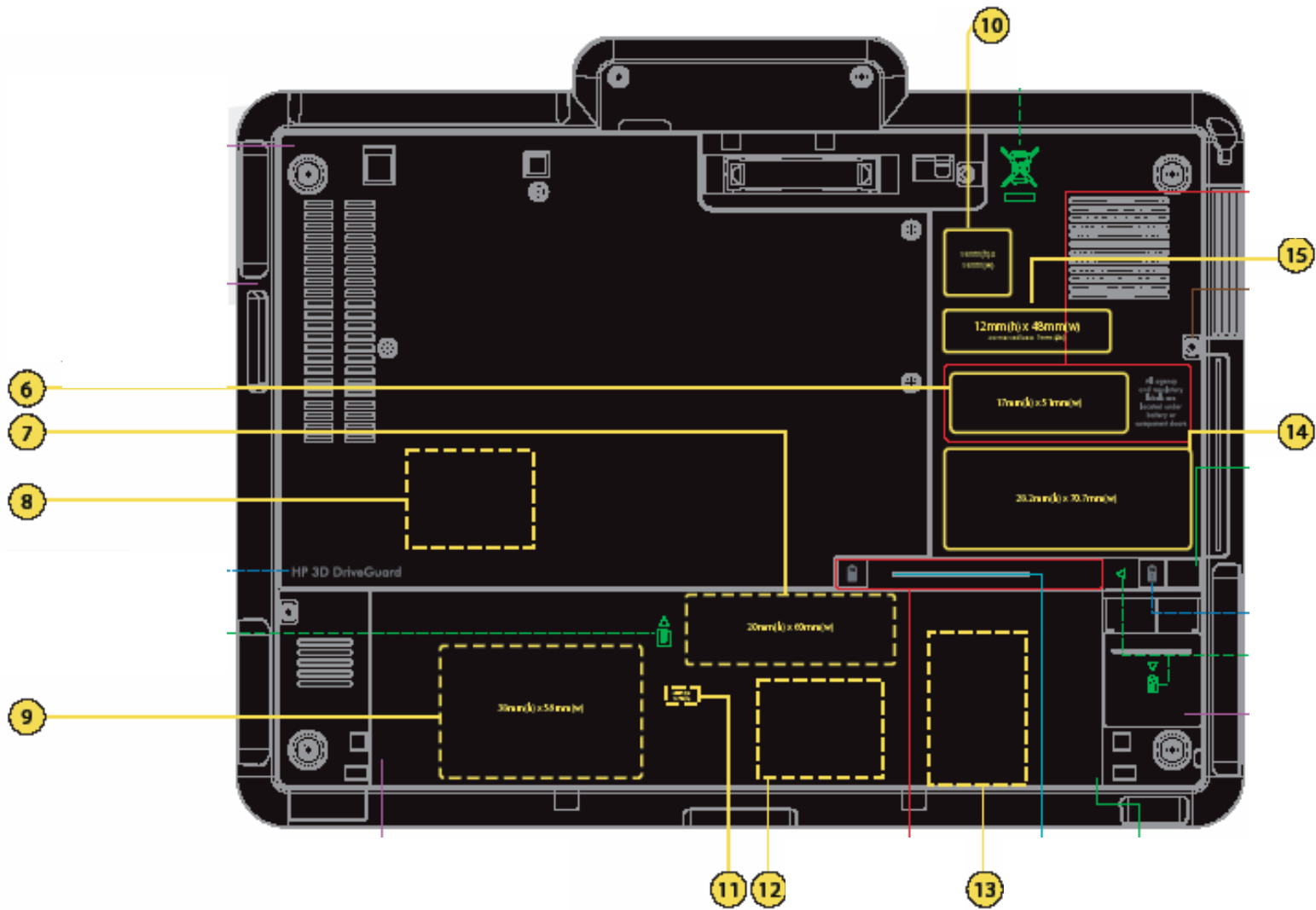
HP Confidential





WWAN right Antenna

WLAN right Antenna



HP Confide

LABELS

- ① Service (Taiwan only)
- ② Keyboard
- ③ Processor
- ④ MS OS (MS OS only)
- ⑤ WWAN Instruction (all countries except Taiwan)
- ⑥ Service Tag
- ⑦ WWAN Regulatory (Reverse Printing)
(after battery on board)
- ⑧ Bluetooth Regulatory (Reverse Printing)
- ⑨ System Regulatory (Reverse Printing)
(after battery on board)
- ⑩ Country Recycle
- ⑪ Qualcomm Regulatory (Reverse Printing)
- ⑫ Wireless Regulatory (Reverse Printing)
- ⑬ Modem Regulatory (Reverse Printing)
- ⑭ MS COA (MS OS only)
- ⑮ Environmental HG
- ⑯ Battery (on bag)

+ Center label using crosshair.

▀ Apply label starting in this corner.

(Reverse Printing) Bkgd is Carbonite and Printing is 430C

HP Confidential