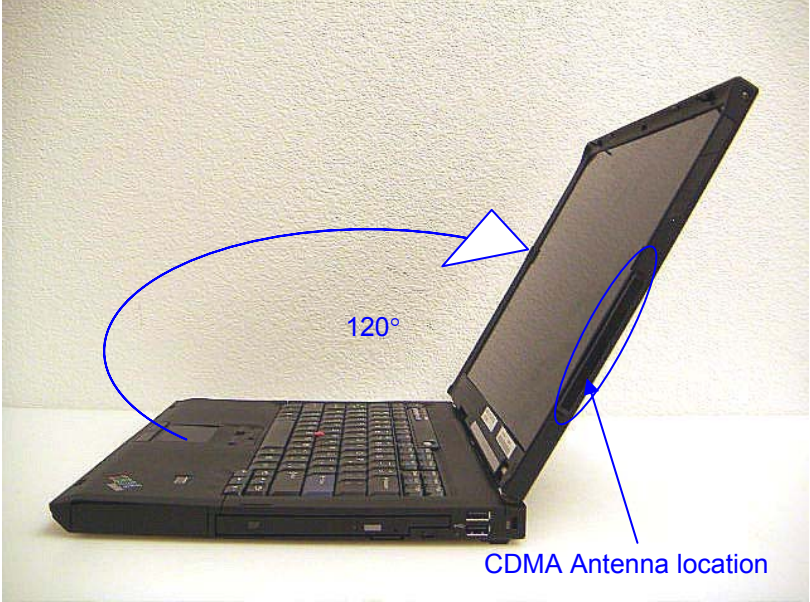


**1 EQUIPMENT UNDER TEST (EUT) DESCRIPTION**

Express MINI-PCI USB Wireless CDMA Modem Module installed in host devices		
Host devices:	<u>Host Devices</u> 14" & 15" Lenovo D-Note	<u>WLAN Module / FCC ID</u> 1. Gwinette / PPD-AR5BXB6 2. Intel /PD9WM3945ABG
Normal operation:	Lap-held position 	
Power supply:	Power supplied through the laptop computer (host device)	
CDMA Antenna:	<ol style="list-style-type: none"> <li>For 14 inch laptop - FOXCONN, Type WDAN-B1DA1003</li> <li>For 15 inch laptop - FOXCONN, Type WDAN-B1DA2003</li> </ol>	

**2 FACILITIES AND ACCREDITATION**

The test sites and measurement facilities used to collect data are located at 561F Monterey Road, Morgan Hill, California, USA. The sites are constructed in conformance with the requirements of ANSI C63.4, ANSI C63.7 and CISPR Publication 22. All receiving equipment conforms to CISPR Publication 16-1, "Radio Interference Measuring Apparatus and Measurement Methods."

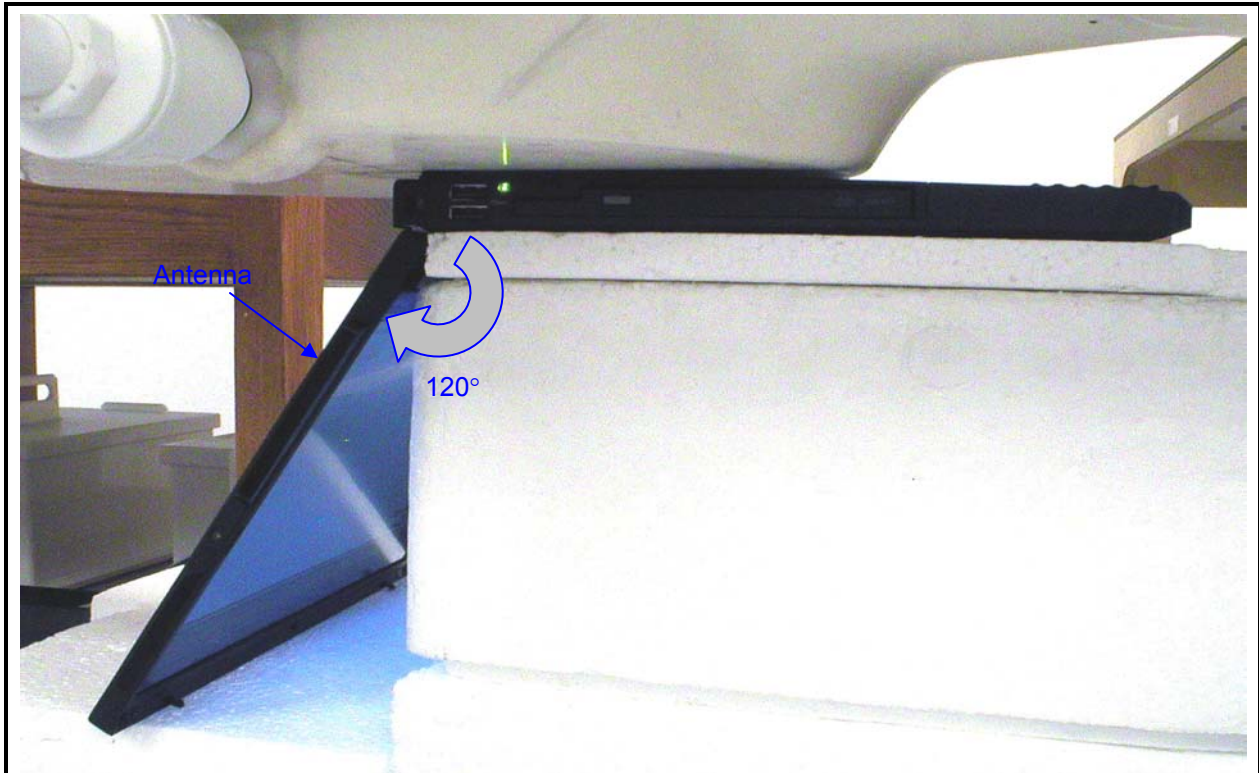


CCS is accredited by NVLAP, Laboratory Code 200065-0. The full scope of accreditation can be viewed at <http://www.ccsemc.com>.

No part of this report may be used to claim product certification, approval, or endorsement by NVLAP, NIST, or any government agency.

**9 SAR TEST SUMMARY**

**9.1 14" LENOVO D-Note**

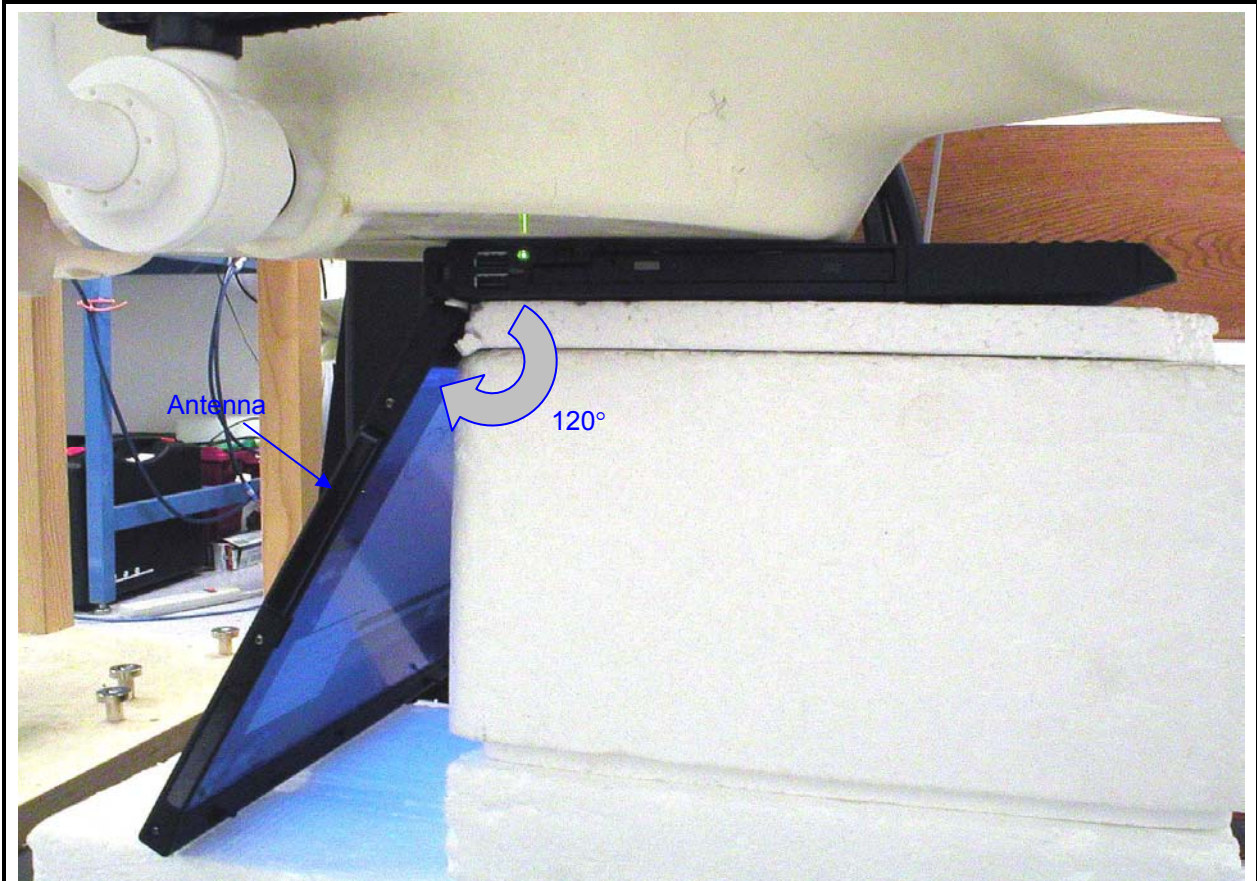


<b>CDMA Cell band</b>						
Channel	f (MHz)	Measured 1g (mW/g)	Power Drift (dBm)	Extrapolated 1g (mW/g)	3 dB Limit (mW/g)	Limit (mW/g)
1013	824.70	0.086	0.000	0.086	0.80	1.6
384	836.52	0.097	0.000	0.097	0.80	1.6
777	848.31	0.093	-0.055	0.094	0.80	1.6
384 <sup>4)</sup>	836.52	0.100	-0.121	<b>0.103</b>	0.80	1.6
384 <sup>5)</sup>	836.52	0.099	-0.106	0.102	0.80	1.6
<b>CDMA PCS band</b>						
Channel	f (MHz)	Measured 1g (mW/g)	Power Drift (dBm)	Extrapolated 1g (mW/g)	3 dB Limit (mW/g)	Limit (mW/g)
25	1851.25	0.107	0.000	0.107	0.80	1.6
600	1880.00	0.110	-0.100	0.113	0.80	1.6
1175	1908.75	0.111	-0.129	0.114	0.80	1.6
1175 <sup>4)</sup>	1908.75	0.111	-0.132	0.114	0.80	1.6
1175 <sup>5)</sup>	1908.75	0.110	-0.184	<b>0.115</b>	0.80	1.6

Notes:

- 1) The exact method of extrapolation is  $measured\ SAR \times 10^{(-drift/10)}$ . The SAR reported at the end of the measurement process by the DASY4 measurement system can be scaled up by the measured drift to determine the SAR at the beginning of the measurement process.
- 2) The SAR measured at the middle channel for this configuration is at least 3 dB lower than SAR limit, thus testing at low & high channel is optional.
- 3) Please see attachment for the detailed measurement data and plots showing the maximum SAR location of the EUT.
- 4) Co-location with WLAN Gwinnet, FCC ID: PPD-AR5BXB6
- 5) Co-location with WLAN Golan, FCC ID: PD9WM3945ABG

9.2 15" LENOVO D-NOTE



<b>CDMA Cell band</b>						
Channel	f (MHz)	Measured 1g (mW/g)	Power Drift (dBm)	Extrapolated 1g (mW/g)	3 dB Limit (mW/g)	Limit (mW/g)
1013	824.70					
384	836.52	0.051	-0.031	0.052	0.80	1.6
777	848.31					
384 <sup>4)</sup>	836.52	0.056	0.000	0.056	0.80	1.6
384 <sup>5)</sup>	836.52	0.051	-0.139	0.053	0.80	1.6
<b>CDMA PCS band</b>						
Channel	f (MHz)	Measured 1g (mW/g)	Power Drift (dBm)	Extrapolated 1g (mW/g)	3 dB Limit (mW/g)	Limit (mW/g)
25	1851.25					
600	1880.00					
1175	1908.75	0.0213	0.000	0.0213	0.80	1.6
1175 <sup>4)</sup>	1908.75	0.0230	0.000	0.0230	0.80	1.6
1175 <sup>5)</sup>	1908.75	0.0225	0.000	0.0225	0.80	1.6

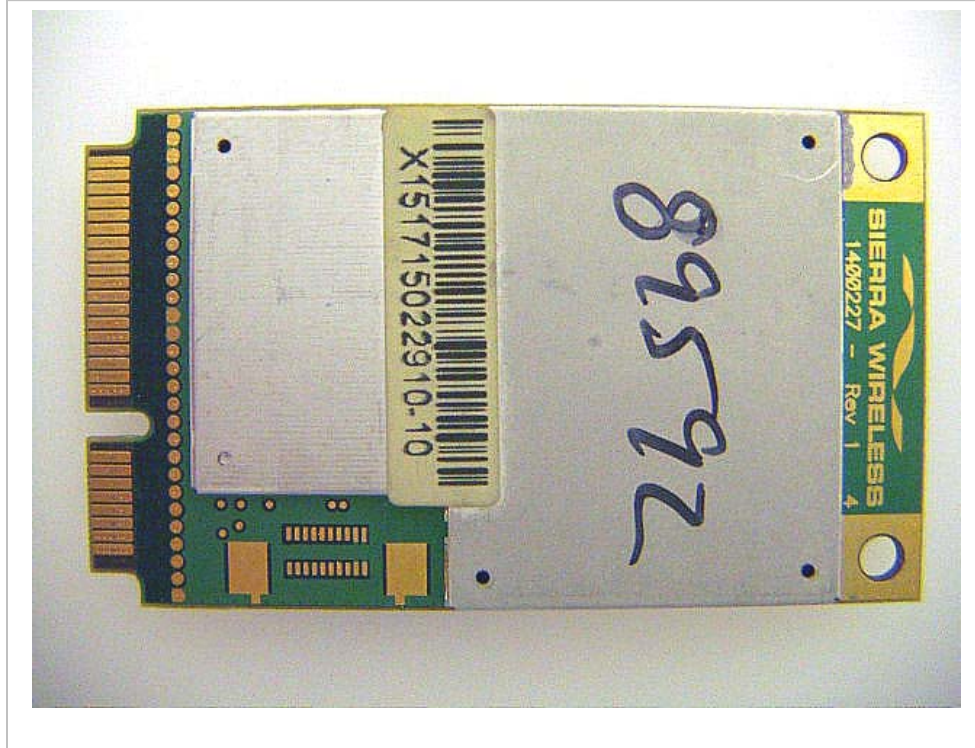
Notes:

- 1) The exact method of extrapolation is  $measured\ SAR \times 10^{(-drift/10)}$ . The SAR reported at the end of the measurement process by the DASY4 measurement system can be scaled up by the measured drift to determine the SAR at the beginning of the measurement process.
- 2) Spot check test performed on the 15" laptop based on the HIGHEST SAR measurements from 14" laptop for each band.
- 3) Please see attachment for the detailed measurement data and plots showing the maximum SAR location of the EUT.
- 4) Co-location with WLAN Gwinnet, FCC ID: PPD-AR5BxB6
- 5) Co-location with WLAN Golan, FCC ID: PD9WM3945ABG



10 PHOTO

10.1 EUT



10.2 HOST DEVICE

Levono D-Note, 14"

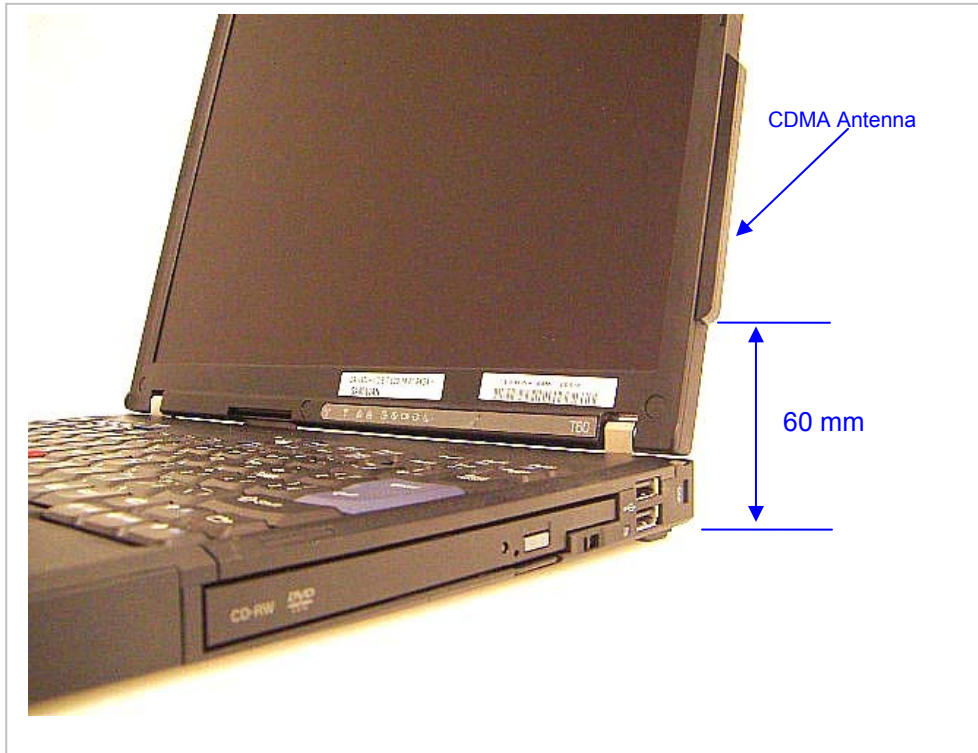


Levono D-Note, 15"





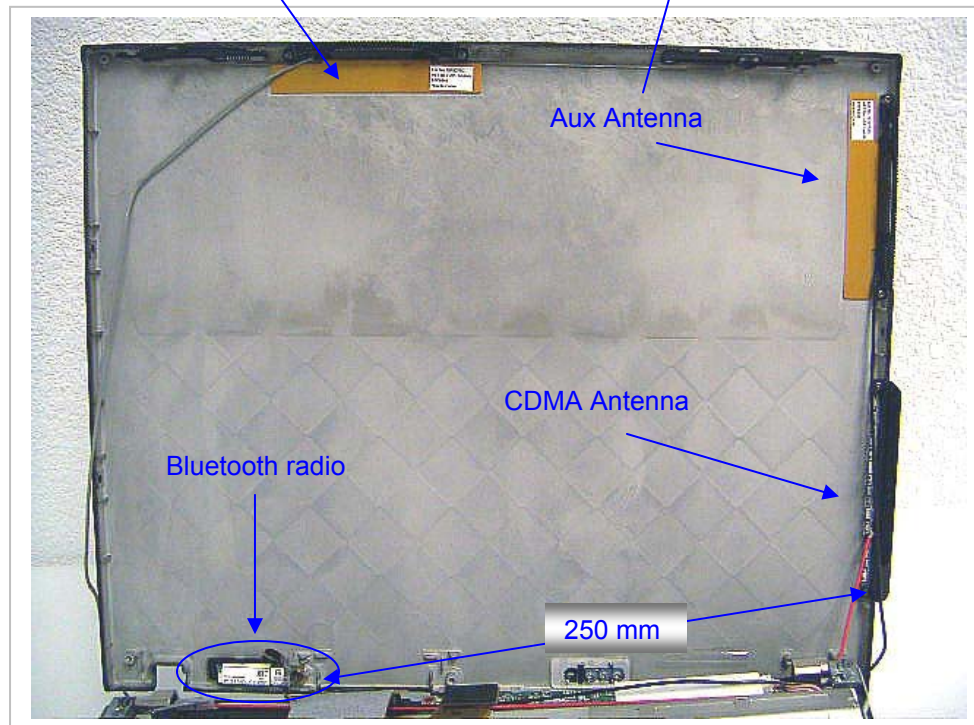
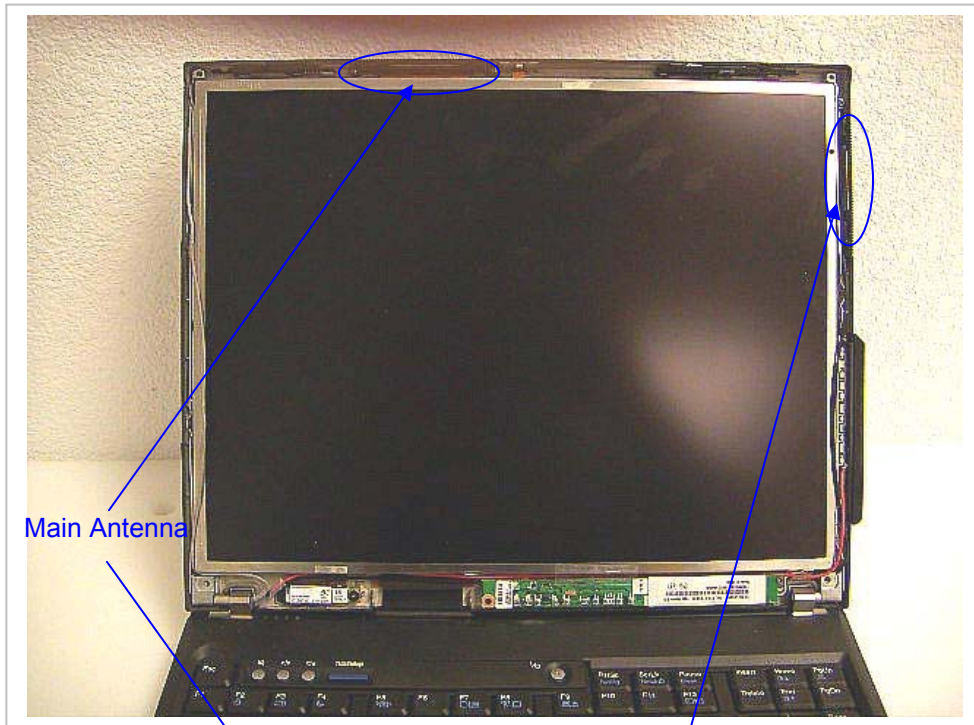
Levono D-Note, 14"



Levono D-Note 15"

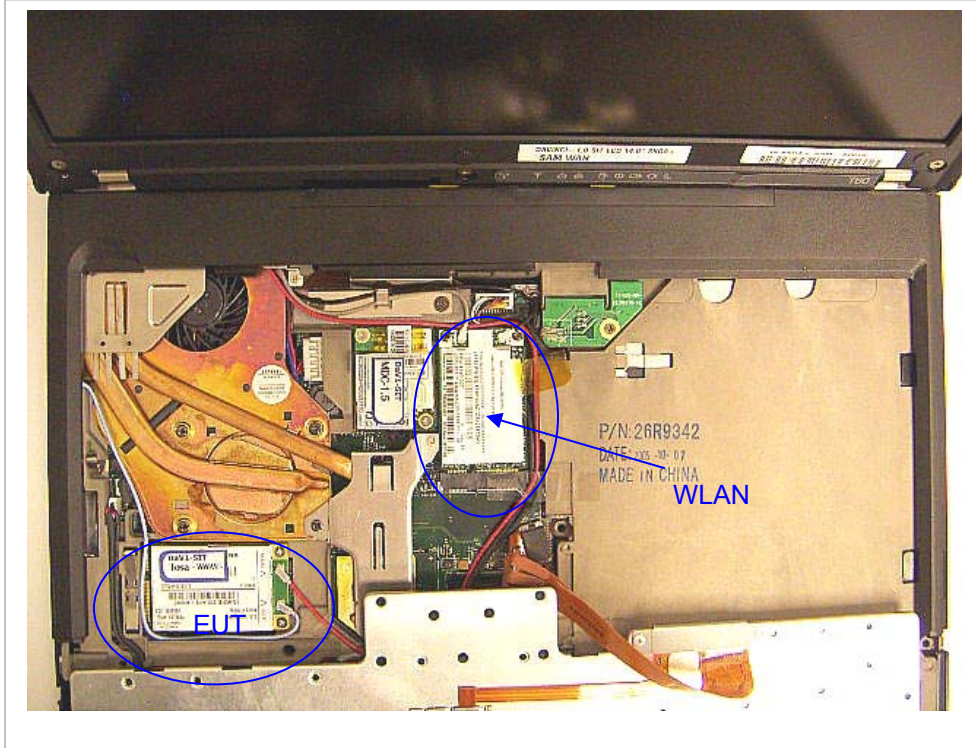


Levono D-Note 14"





Levono D-Note, 14"



Levono D-Note, 15"

