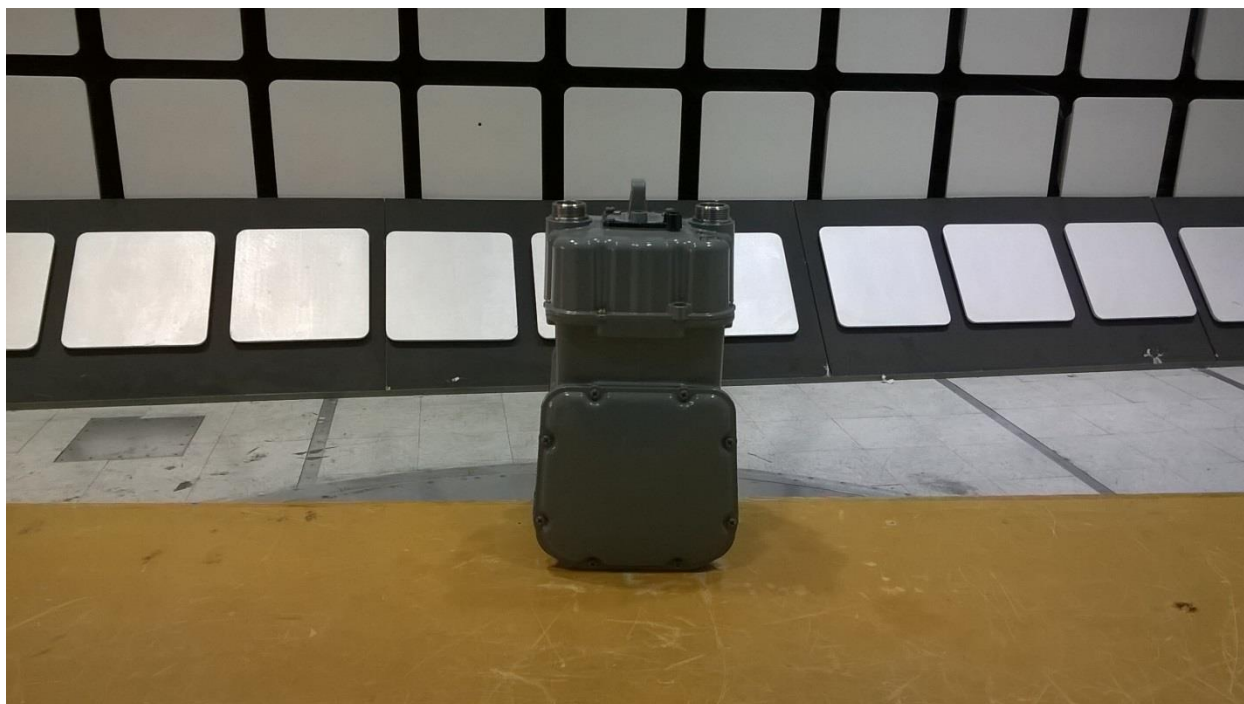


## Test Setup Photos



**Figure 1 - Radiated Emissions Test Setup, 30MHz - 1GHz**

## Test Setup Photos



Figure 2 - Radiated Emissions Test Setup, 30Mhz - 1GHz

For continuous transmit tests, the EUT was by a 3.3V power supply. This was used for testing purposes only because the battery would not last long enough to support testing. This would not be present in normal use.

### Test Setup Photos

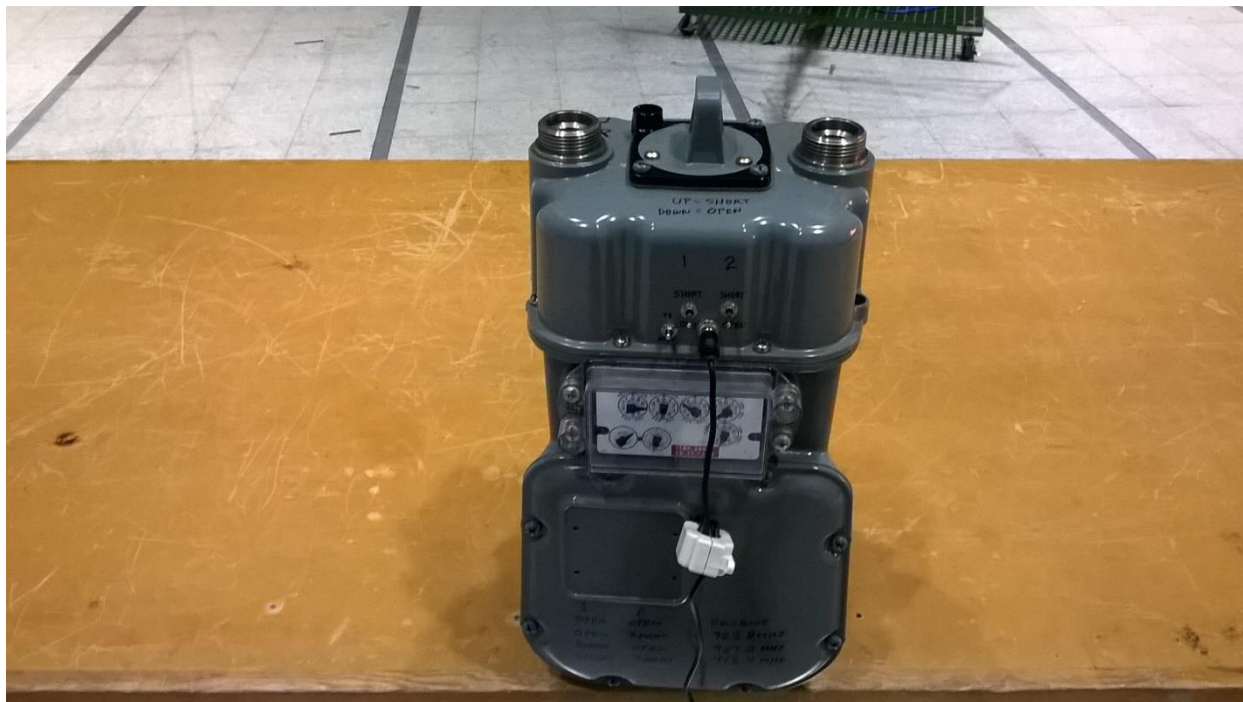


Figure 3 - Radiated Emissions Test Setup, 30Mhz - 1GHz

## Test Setup Photos

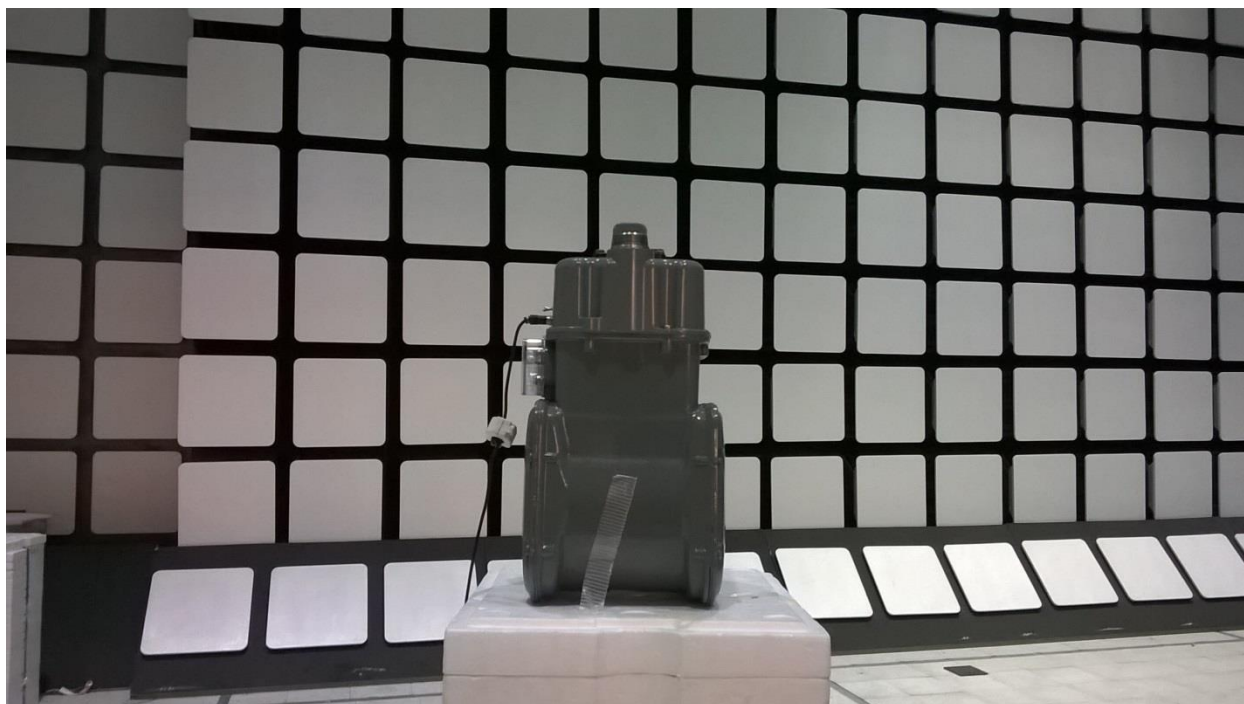


Figure 4 - Radiated Emissions Test Setup, 1 – 10 GHz



### Test Setup Photos



Figure 5 - Radiated Emissions Test Setup, 1 – 10 GHz

## Test Setup Photos

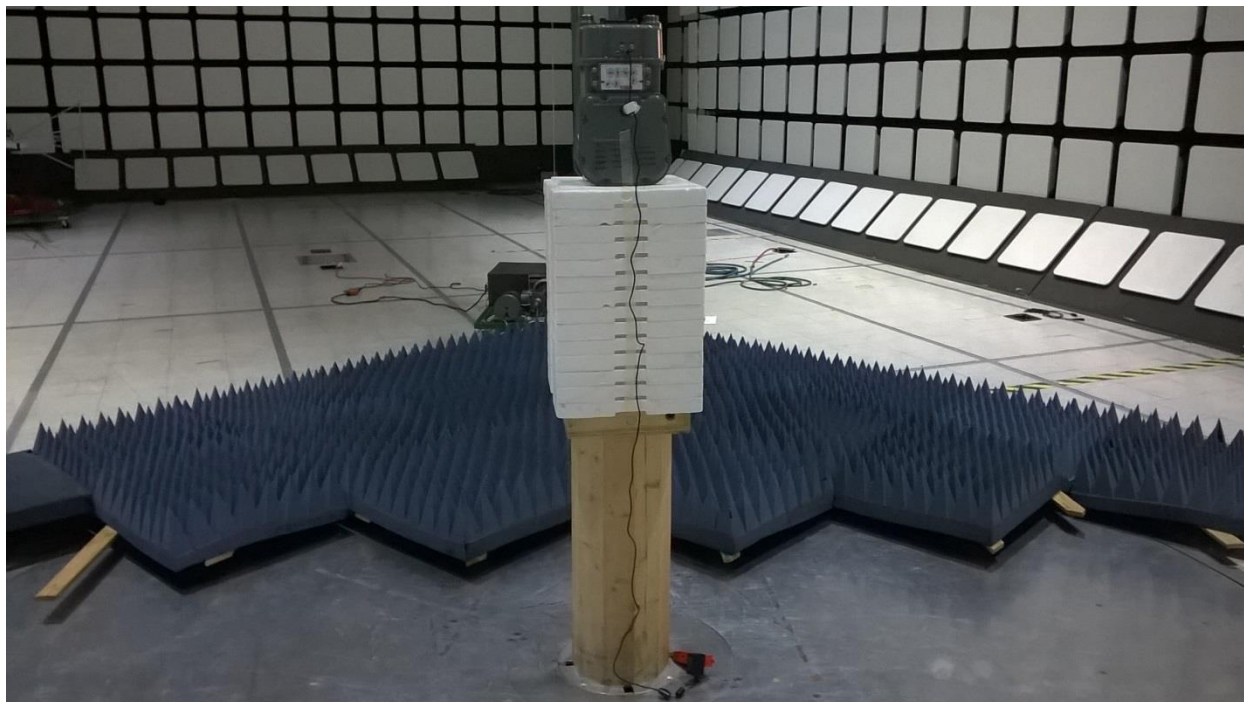


Figure 6 - Radiated Emissions Test Setup, 1 – 10 GHz