

■ Antenna Specification

Product Name : Whip Antenna of 900MHz Range

MODEL : HA-900-SSMA

Manufacturer : HanKook Antenna Company

① Application

This specification describes $\lambda/4$ WHIP ANTENNA used for frequency range of 900MHz for transmission DATA of wireless.

② Conditions of using Antenna

■ Handheld ■ Fixed ■ Mobile ■ Outdoor ■ Indoor □ Others

③ Shape of Antenna

Refer to attached drawing No.

④ Electrical features and Performance

Item	Features/Performance	Remark
Frequency range	896 ~ 941 MHz	
Nominal impedance	50 Ω	
V.S.W.R	1 : 2.0	
Radiation	Omni-direction	
Polarization	Vertical	
Gain	Unity	

⑤ Structural Specification

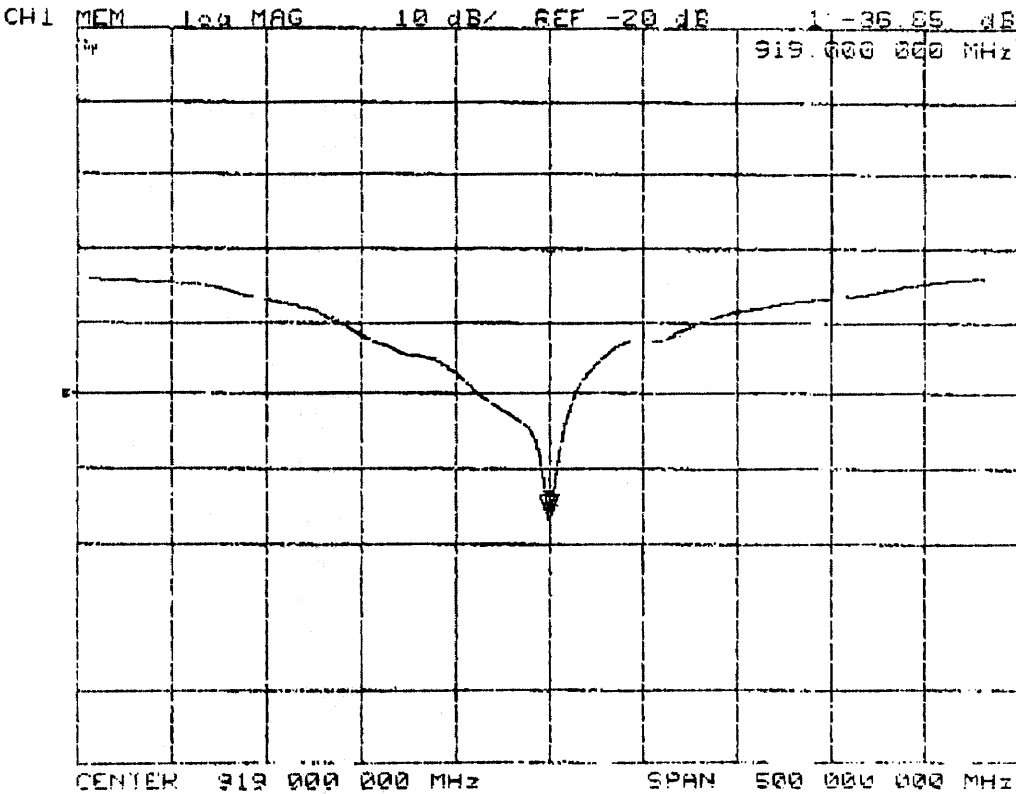
Item	Specification/Features	Remark
Radiator	Ø1.5 Speedo wire	
Sleeve	Shrinkable Tube	F-Type Ø1.5
Connector	SMA-Plug	Ni-plating
Total length	85 ± 3mm	

⑥ Other features and performance**A. Temperature**

Antenna shall not be deformed or damaged and shall satisfy “Clause 4” in this specification after Placing Antenna at -30°C and 70°C for 96 hours.

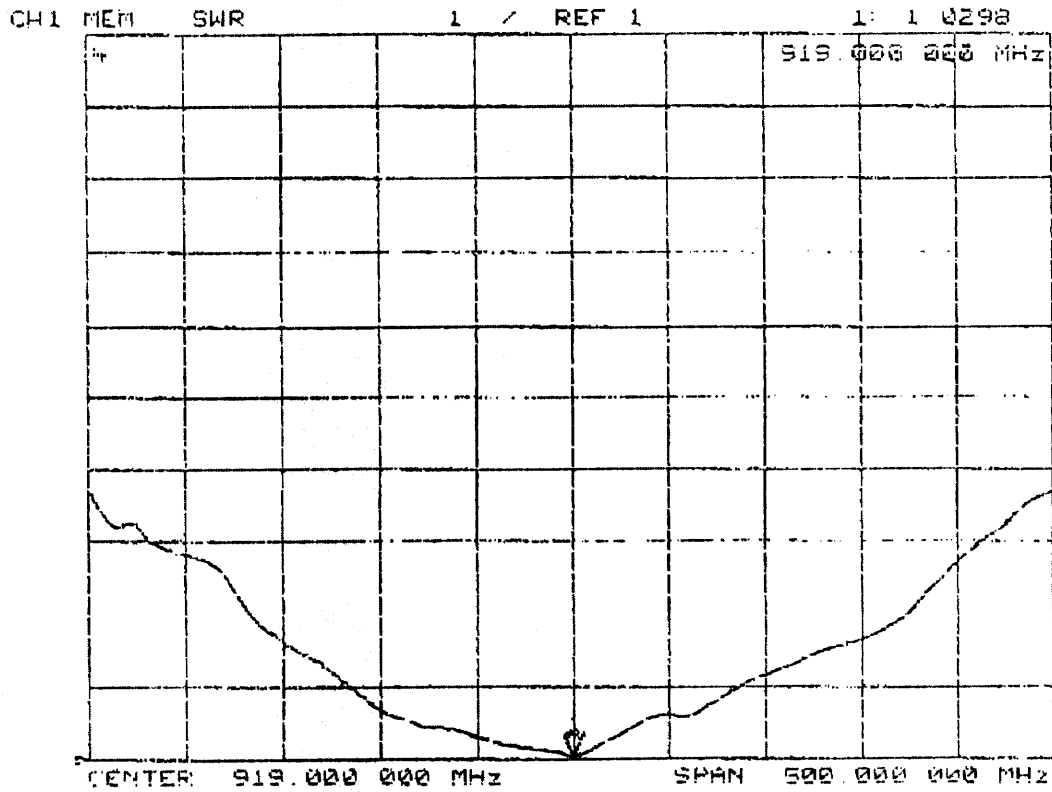
B. Humidity

After placing Antenna at surrounding temp. 40°C with relative humidity of 90 ~ 95 for 96 hours, antenna shall not be deformed or damaged, and shall satisfy “Clause 4” in this specification



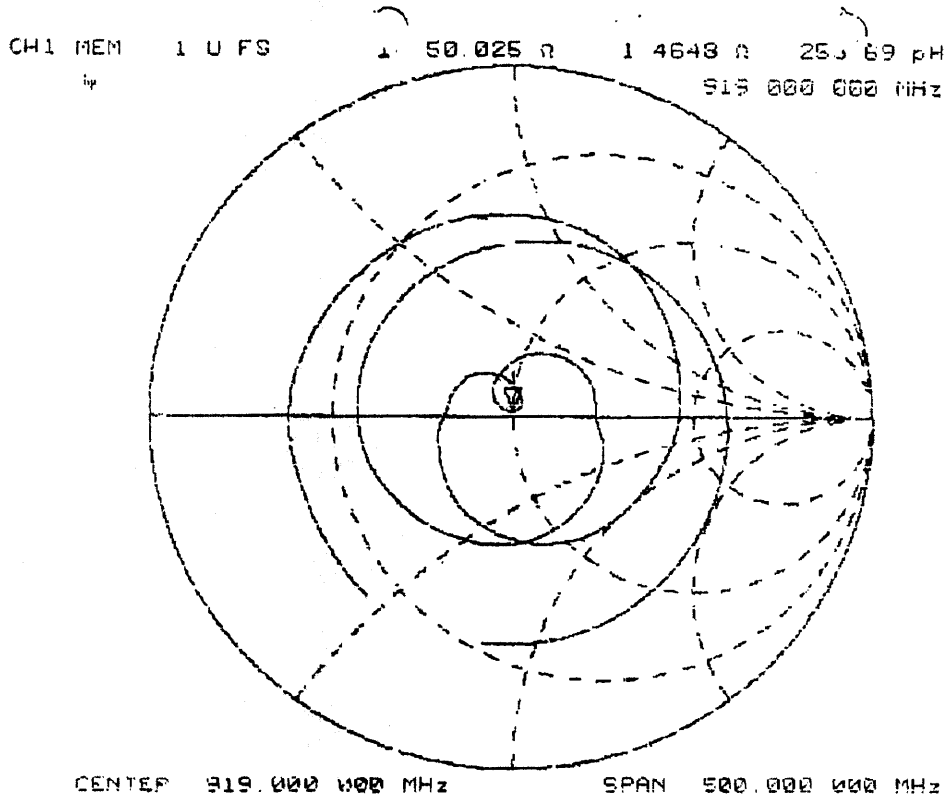
< Picture 1 >

Stimulus [MHz]	CH1 MEN [dB]	Stimulus [MHz]	CH1 MEN [dB]
894.000	-22.322	931.000	-21.178
896.000	-22.71	934.000	-19.697
899.000	-23.158	936.000	-18.528
901.000	-23.608	939.000	-17.647
904.000	-23.981	941.000	-16.942
906.000	-24.393	944.000	-16.216
909.000	-24.983	946.000	-15.56
911.000	-26.191	949.000	-14.903
914.000	-28.439	951.000	-14.273
916.000	-32.236	954.000	-13.759
919.000	-36.85	956.000	-13.303
921.000	-33.206	959.000	-12.973
924.000	-28.902	961.000	-12.718
928.000	-25.681	964.000	-12.636
929.000	-23.126	966.000	-12.401



< Picture 2 >

Stimulus [MHz]	CH1 MEN [dB]	Stimulus [MHz]	CH1 MEN [dB]
894.000	1.1658	931.000	1.1919
896.000	1.1579	934.000	1.231
899.000	1.1494	936.000	1.2688
901.000	1.1413	939.000	1.3018
904.000	1.1349	941.000	1.3315
906.000	1.1283	944.000	1.3657
909.000	1.1134	946.000	1.4001
911.000	1.1331	949.000	1.4386
914.000	1.0787	951.000	1.4792
916.000	1.0501	954.000	1.5162
919.000	1.0298	956.000	1.5516
921.000	1.0447	959.000	1.5793
924.000	1.0744	961.000	1.6017
928.000	1.1099	964.000	1.6182
929.000	1.16	966.000	1.631

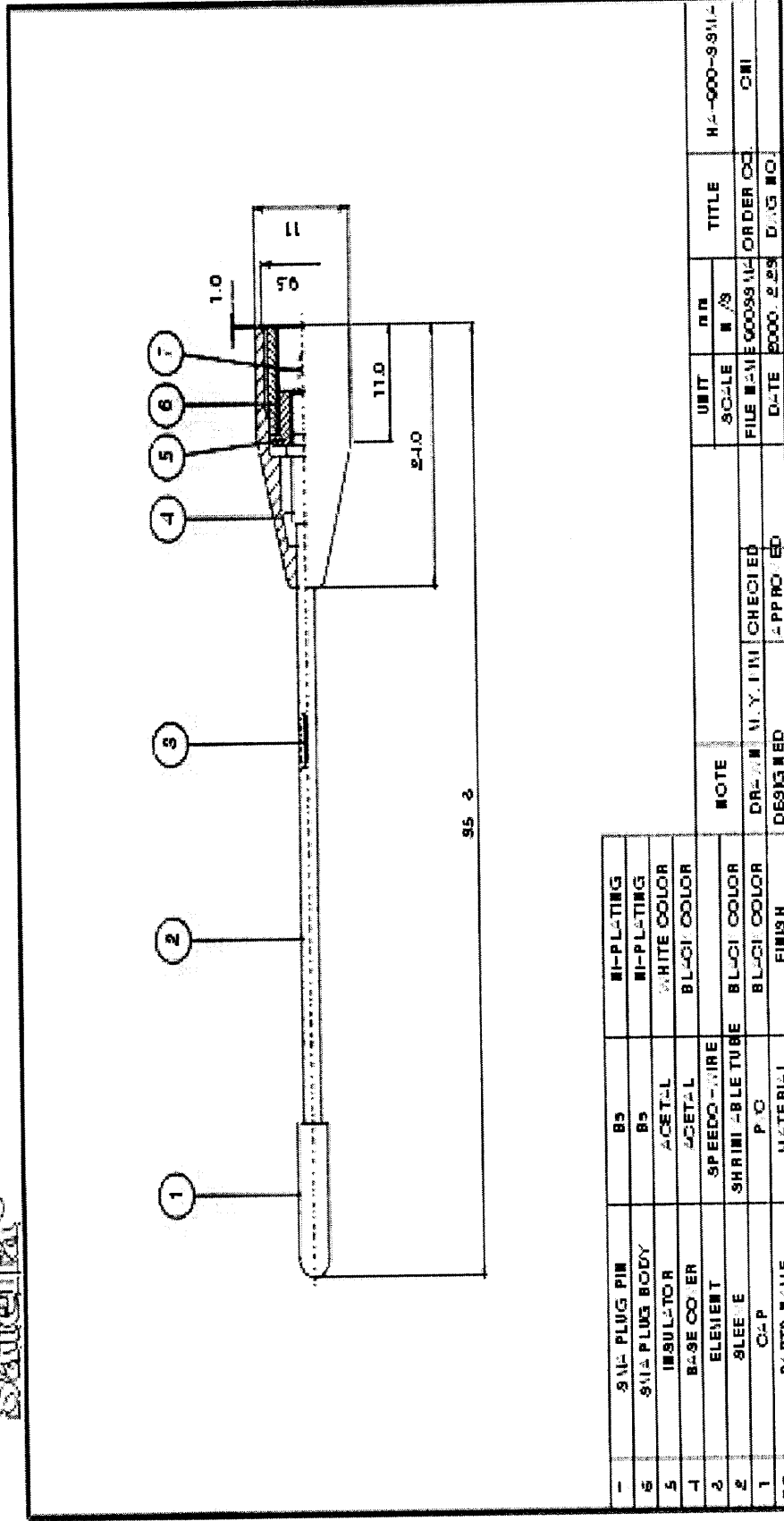


< Picture 3 >

Stimulus [MHz]	CH 1 MEN R [Ω]	CH 1 MEN X _L [Ω]	Stimulus [MHz]	CH 1 MEN R [Ω]	CH 1 MEN X _L [Ω]
894.000	50.727	7.6973	931.000	44.422	6.0938
896.000	51.014	7.3359	934.000	44.288	7.9629
899.000	51.324	6.9336	936.000	44.541	9.8516
901.000	51.551	6.5312	939.000	45.236	11.643
904.000	51.783	6.1953	941.000	46.184	13.26
906.000	52.045	5.8164	944.000	47.193	14.941
909.000	52.516	5.207	946.000	48.588	16.607
911.000	52.674	4.2658	949.000	50.299	18.336
914.000	52.416	3.0273	951.000	52.605	20.037
916.000	51.477	1.9902	954.000	55.584	21.381
919.000	50.026	1.4648	956.000	59.186	22.271
921.000	48.972	1.6152	959.000	63.238	22.281
924.000	47.242	2.1387	961.000	67.991	21.43
928.000	48.064	3.0977	964.000	71.57	19.496
929.000	46.029	4.4043	966.000	75.488	16.547

Antenna Dimension

Satena®



95 2

4	SMP PLUG PIN	B5	NI-PLATING
5	SMP PLUG BODY	B5	NI-PLATING
6	INSULATOR	ACETAL	WHITE COLOR
7	BASE COILER	ACETAL	BLACK COLOR
8	ELEMENT	SPEEDO-WIRE	
9	SLEEVE	SHRINKABLE TUBE	BLACK COLOR
10	CRP	P/O	BLACK COLOR
11	PARTS NAME	MATERIAL	FINISH

UNIT	IN	TITLE	H4-000-9911-
SCALE	N/A	ORDER NO.	CNI
FILE NAME	0009911	DWG NO.	
DATE	8000-2-29		

Infocommunications Co., Ltd.

