

FCC PART 90 TYPE APPROVAL
EMI MEASUREMENT AND TEST REPORT
ABOUT EUT INTERNAL & EXTERNAL PHOTO
FOR
COMMUNICATION NETWORK INTERFACE, INC.

51-2, SungSan 1-dong, Mapo-gu
SEOUL 121-251, KOREA

FCC ID: N79CNI-800D

May 2, 1999

| | |
|---|--|
| This Report Concerns: <input checked="" type="checkbox"/> Original Report | Equipment Type: Radio Packet Modem |
| Test Engineer: John Chan | |
| Test Date: May 2, 1999 | |
| Certified By: John Y. Chan - Director, Compliance Engineering | |
| Prepared By: Bay Area Compliance Laboratory Corporation 230 Commercial Street, Suite 2 Sunnyvale, CA 94086 (408) 732-9162 | |

Note: This report may not be duplicated without prior written consent of Bay Area Compliance Laboratory Corporation. This report **must not** be used by the client to claim product endorsement by NVLAP or any agency of the U.S. Government.

TABLE OF CONTENTS

1 - GENERAL INFORMATION 3

 1.1 PRODUCT DESCRIPTION FOR EQUIPMENT UNDER TEST (EUT) 3

2 – EUT PHOTOGRAPHS 4

 2.1 EUT: TOP VIEW..... 4

 2.2 EUT: BOTTOM VIEW 5

 2.3 EUT: ENCLOSURE OFF TOP VIEW..... 6

 2.4 EUT: ENCLOSURE OFF BOTTOM VIEW 7

 2.5 EUT: ENCLOSURE OFF TRANSMITTING UNIT TOP VIEW 8

 2.6 EUT: ENCLOSURE OFF TRANSMITTING UNIT BOTTOM VIEW 9

 2.7 EUT: ENCLOSURE OFF CONTROL BOARD TOP VIEW 10

 2.8 EUT: ENCLOSURE OFF CONTROL BOARD BOTTOM VIEW 11

1 - GENERAL INFORMATION

1.1 Product Description for Equipment Under Test (EUT)

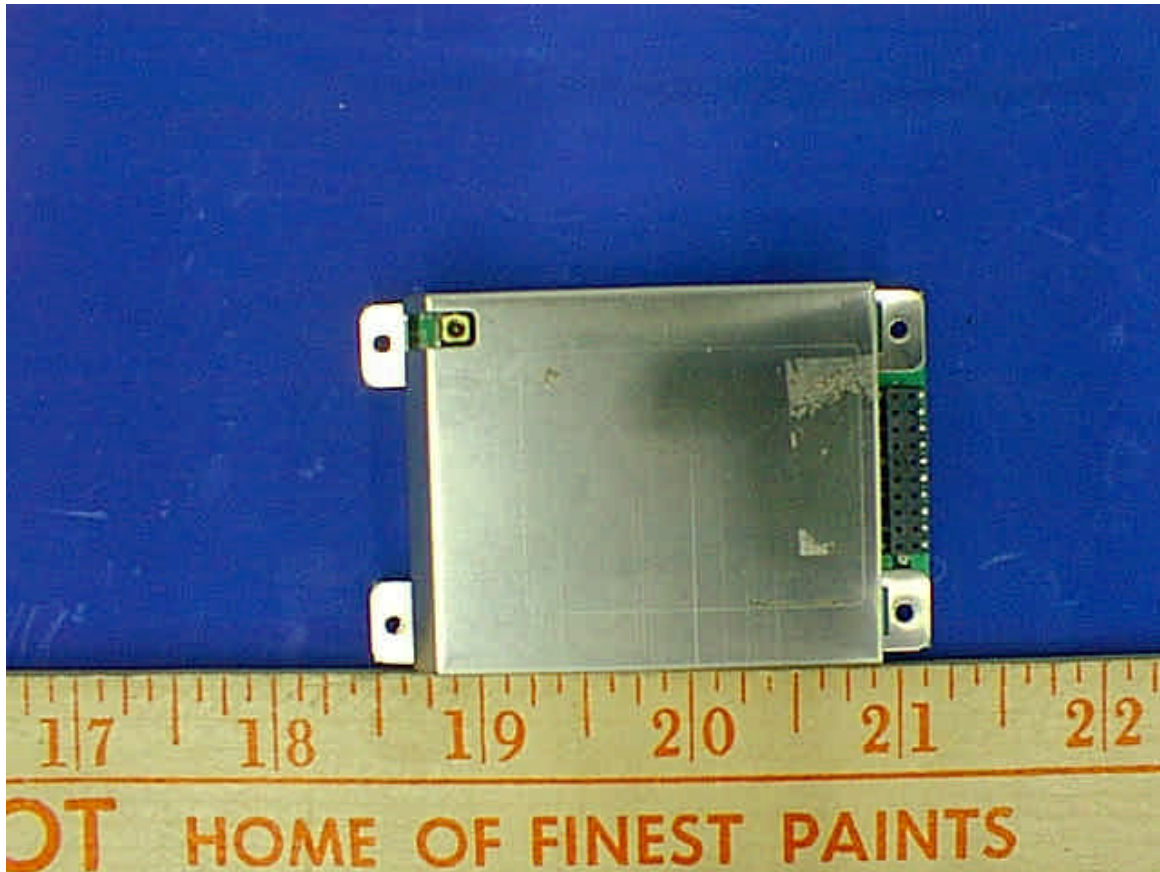
The *Communication Network Interface, Inc.*, FCC ID *N79CNI-800D*, *RPM (RADIO PACKET MODEM)* or the "EUT" as referred to in this report is a digital data communication equipment in accordance with Motorola DataTac 5000 RD-LAP 19.2 specification. The frequency it uses ranges from 806 MHz to 821 MHz for transmission and from 851 MHz to 866 MHz for reception. The EUT measures 68.5mm L x 46.6 mm W x 10.4mm H.

Basic Specification include:

- Weight: 45g
- Power: 4.2 V from Host
- RF protocol: RD-LAP 19.2 on DataTAC 5000
- Host protocol: DataTAC NCL 1.2
- Etc.

2 – EUT PHOTOGRAPHS

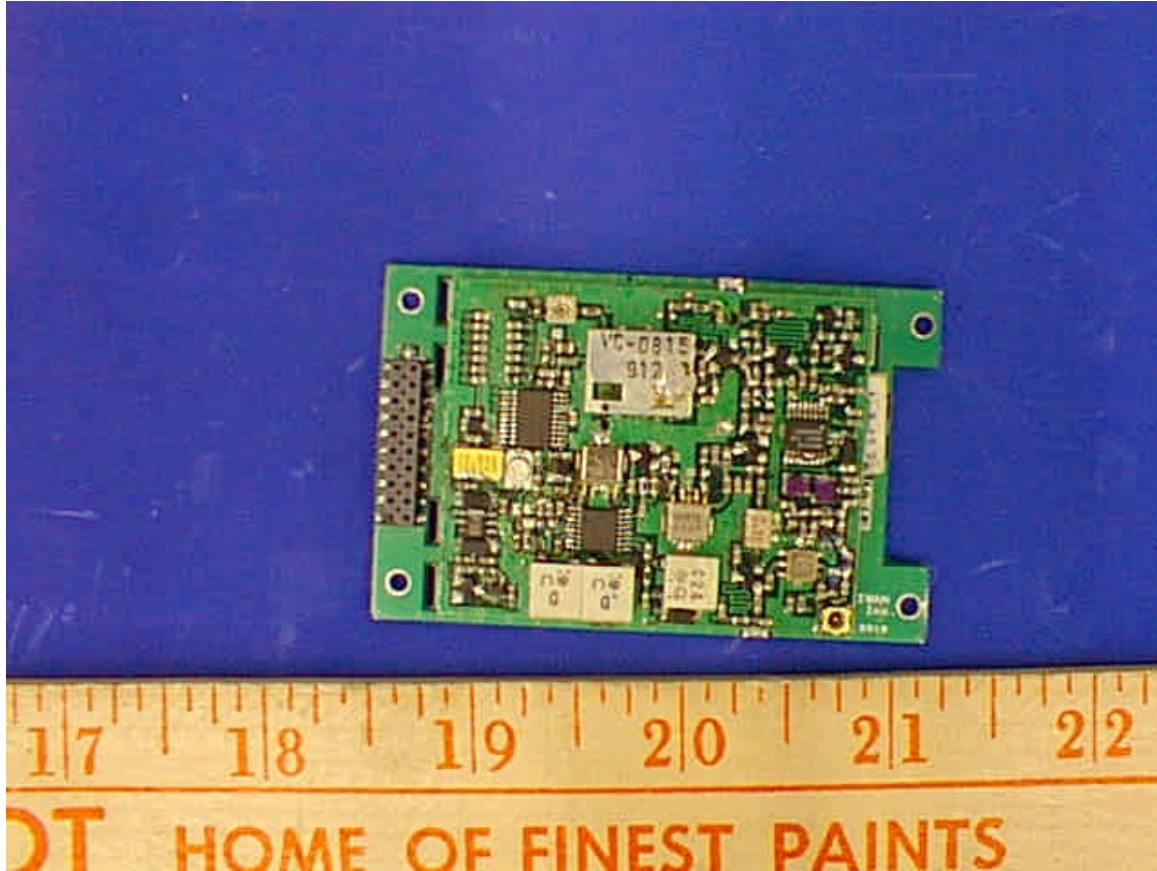
2.1 EUT: Top View



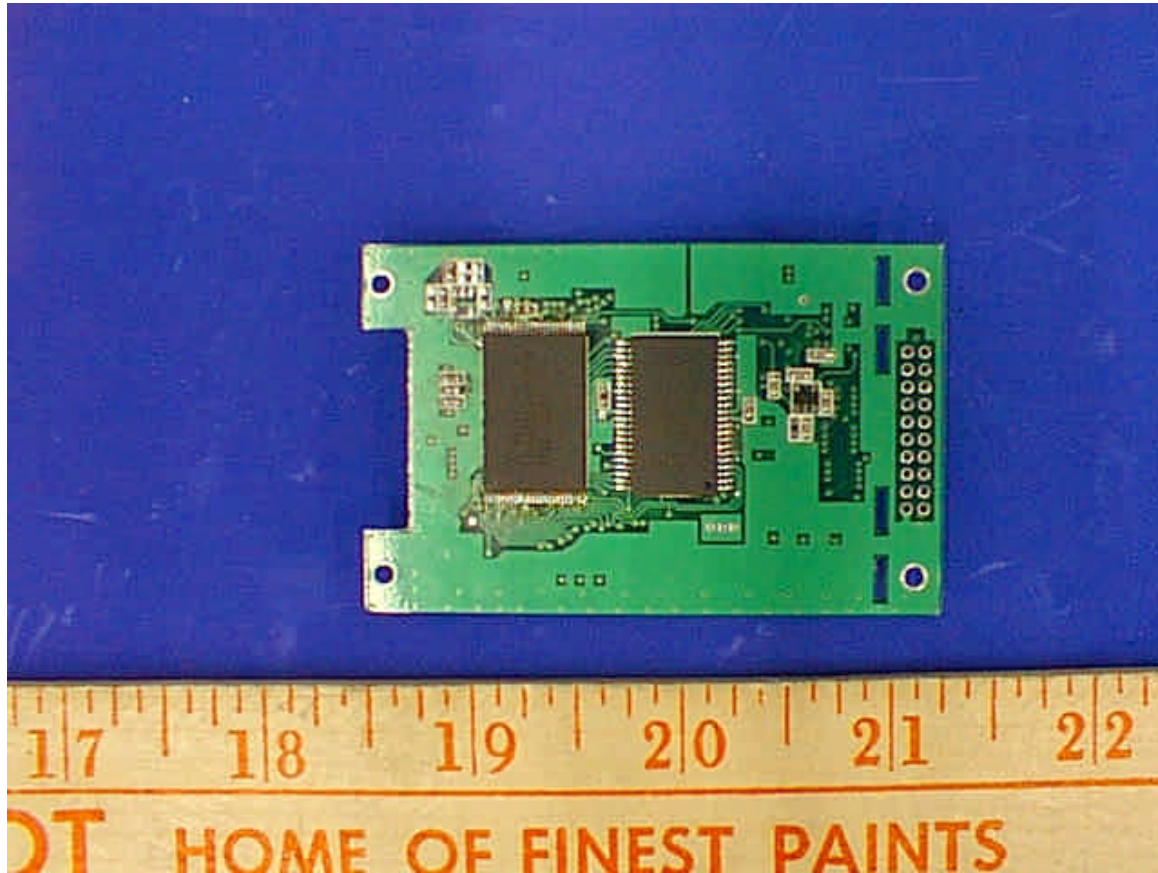
2.2 EUT: Bottom View



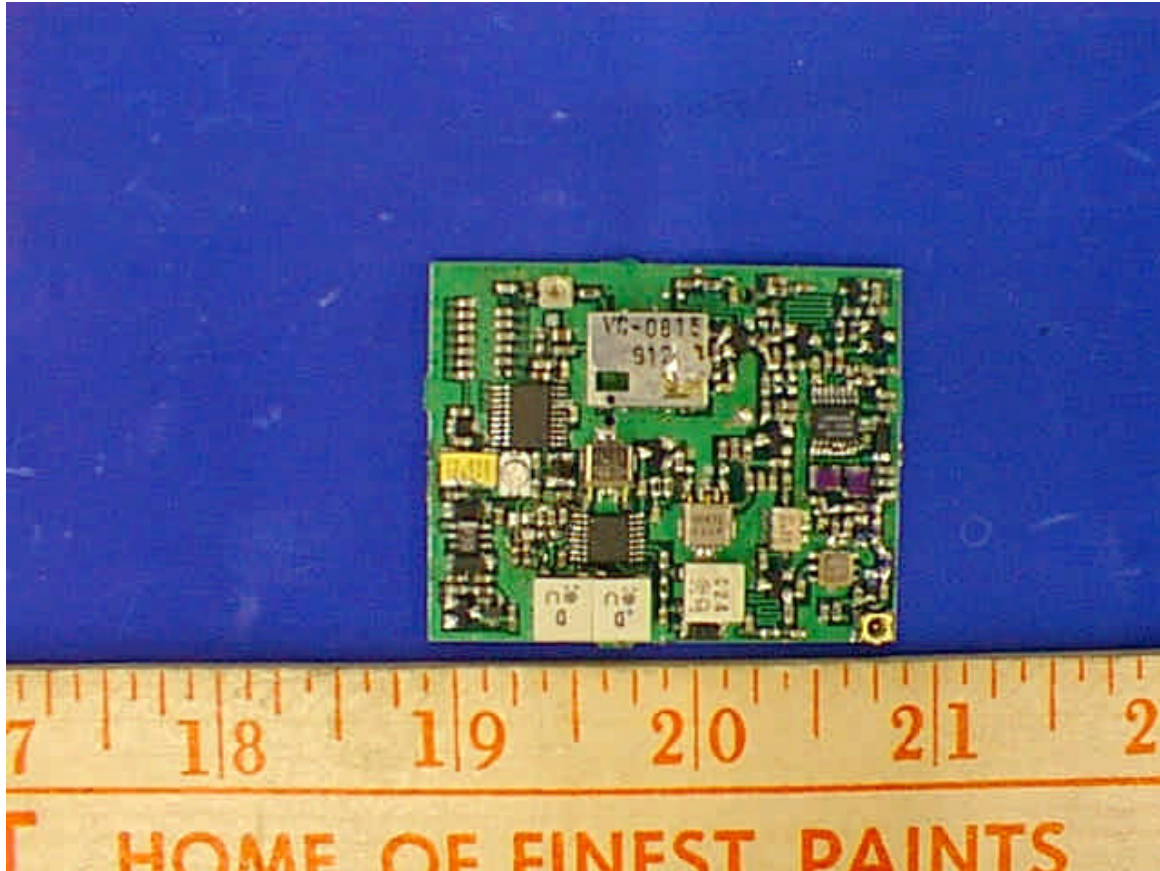
2.3 EUT: Enclosure Off Top View



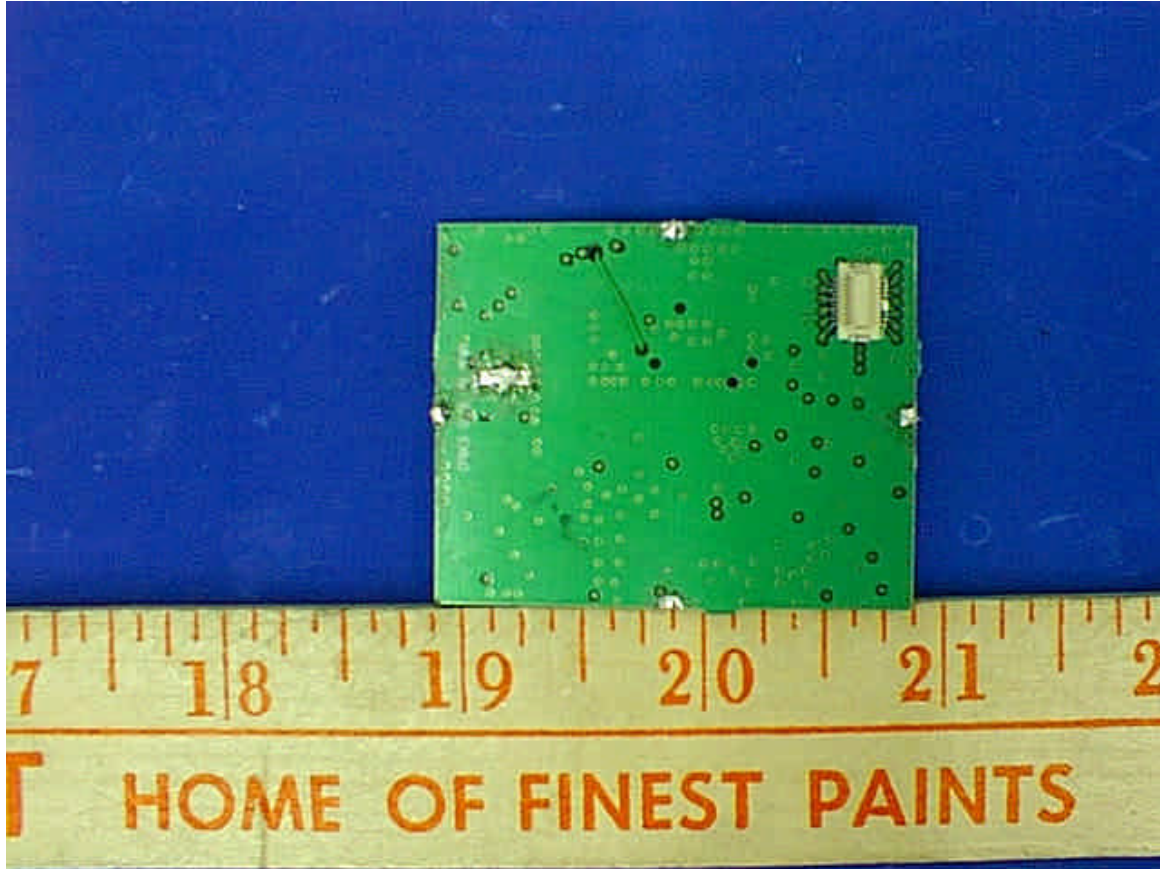
2.4 EUT: Enclosure Off Bottom View



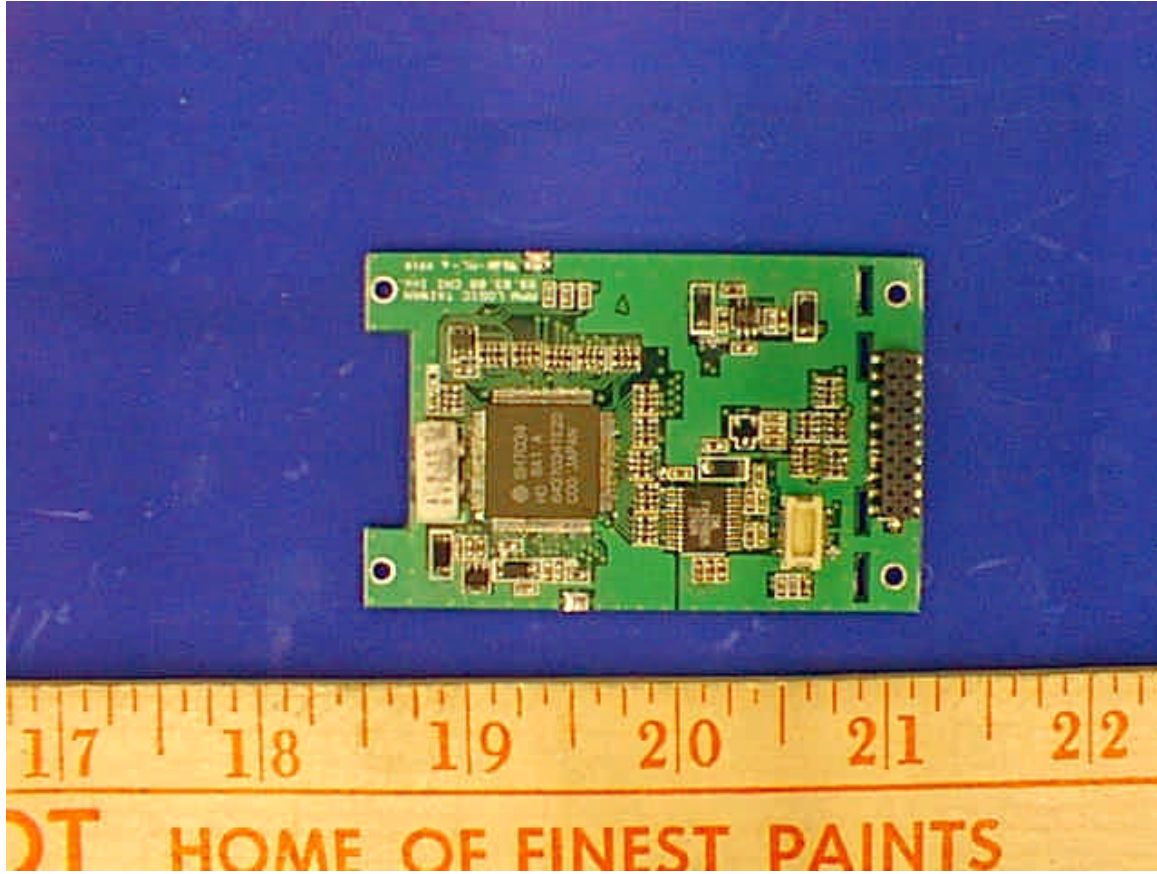
2.5 EUT: Enclosure Off Transmitting Unit Top View



2.6 EUT: Enclosure Off Transmitting Unit Bottom View



2.7 EUT: Enclosure Off Control Board Top View



2.8 EUT: Enclosure Off Control Board Bottom View

