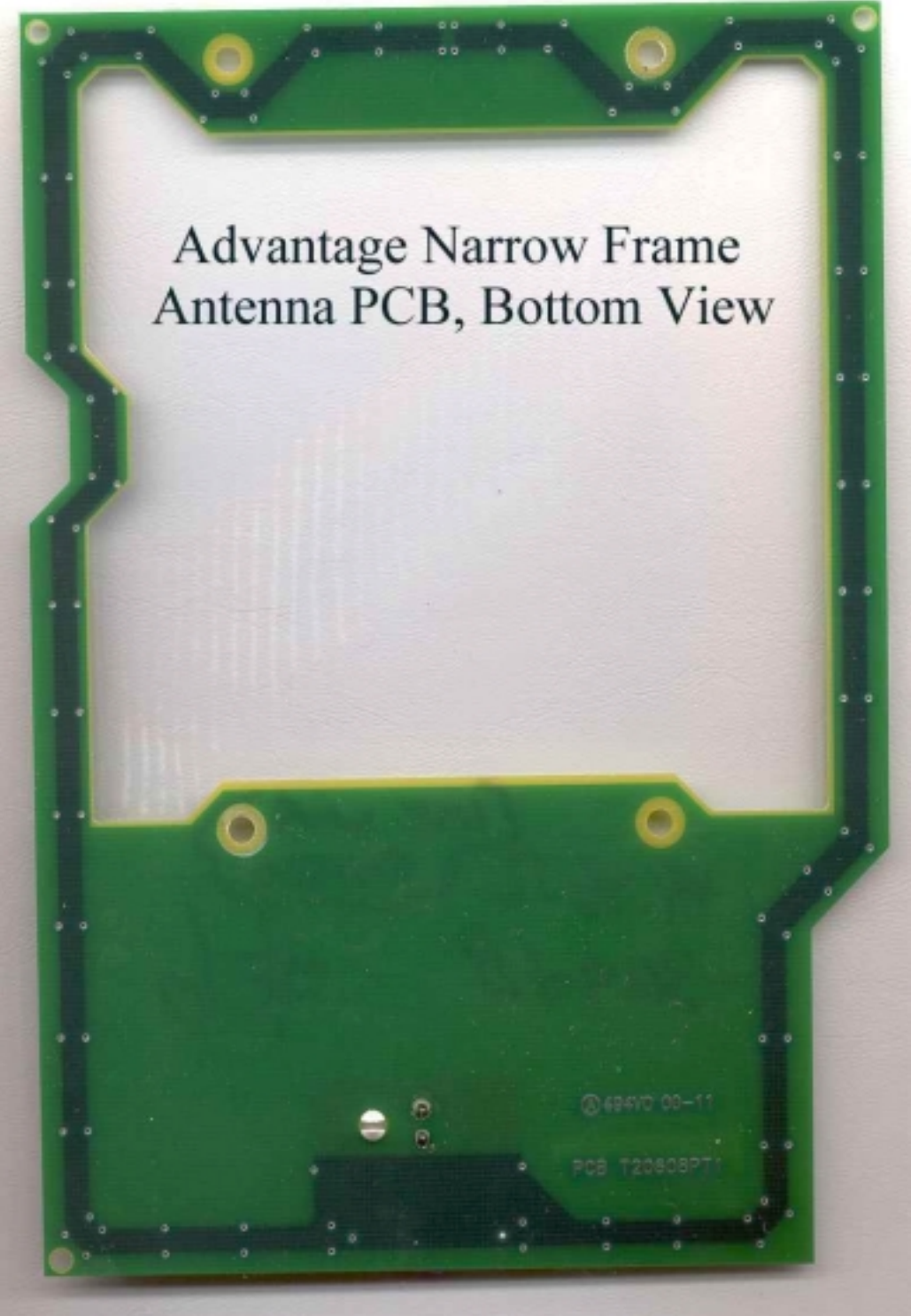




AC Power Filter



Advantage Narrow Frame
Antenna PCB, Bottom View

© 49470 00-11

PCB T2080371

Advantage Narrow Frame
Antenna PCB, Top View

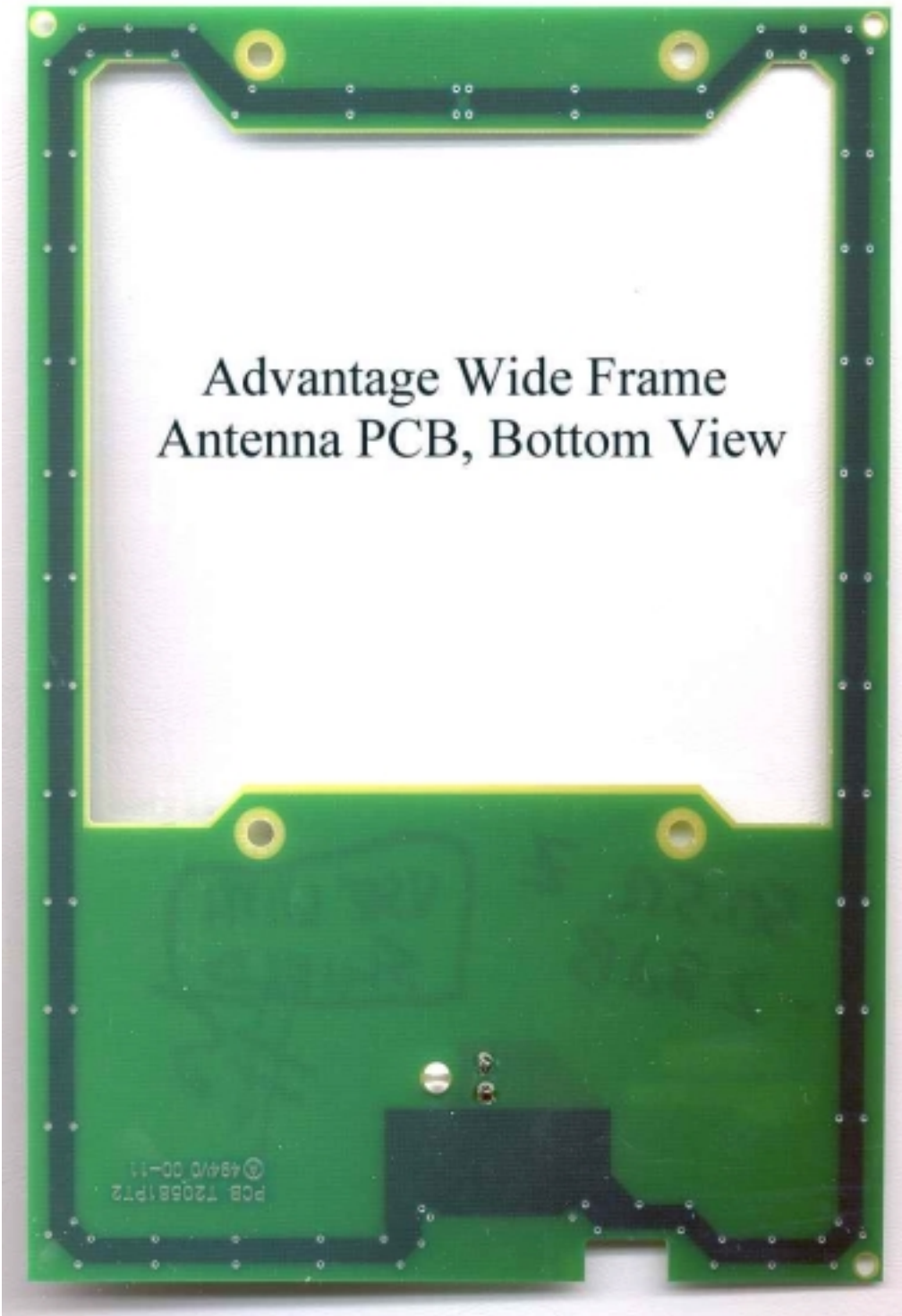
49.46 Ω
-30.9dB #6

USE WITH SHIELD

Vericon
ASSY T20609 C
REV



Advantage Wide Frame
Antenna PCB, Bottom View



Advantage Wide Frame
Antenna PCB, Top View

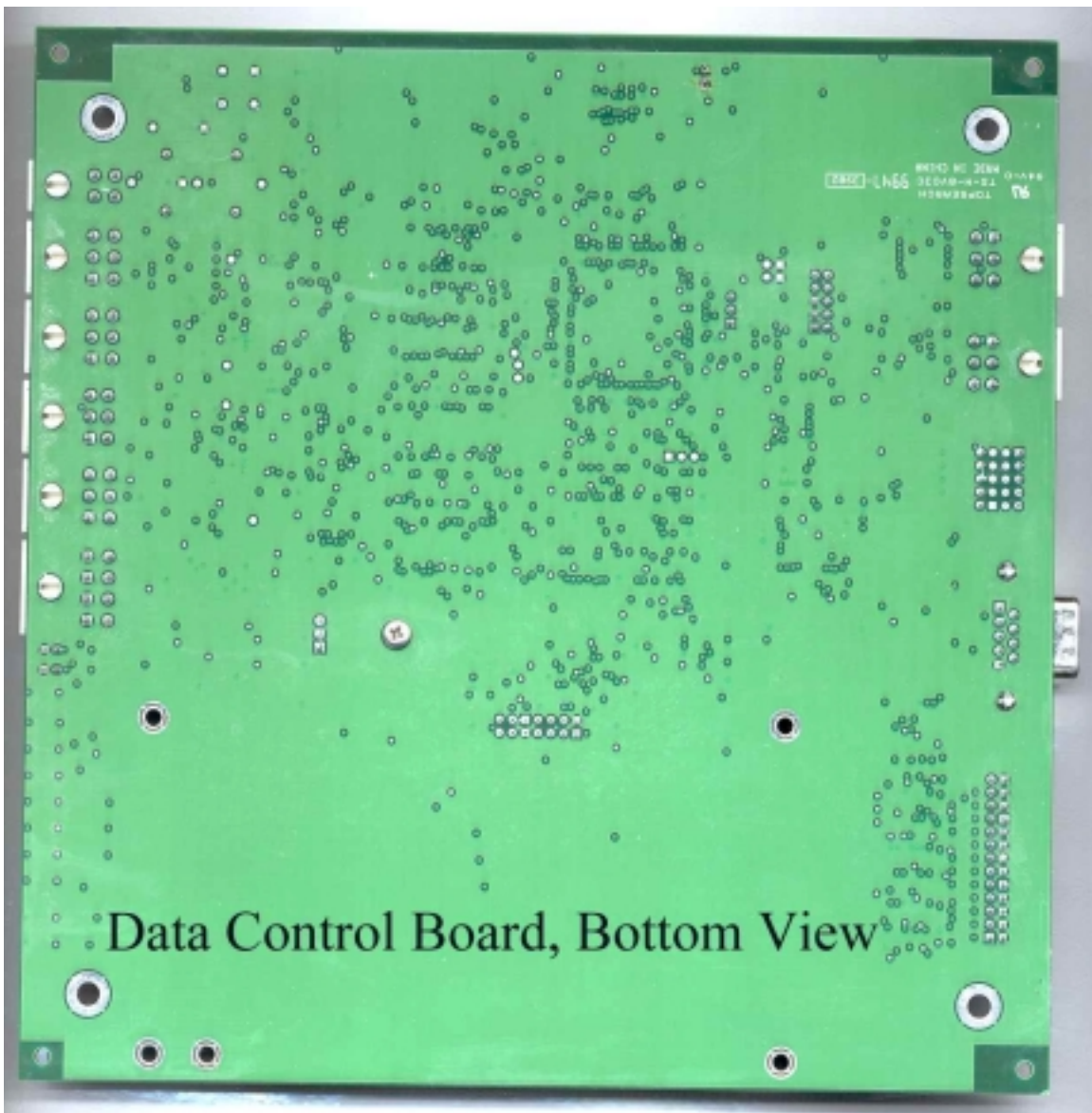
50.5Ω Z
-28dB

USE WITH
SHIELD
#5

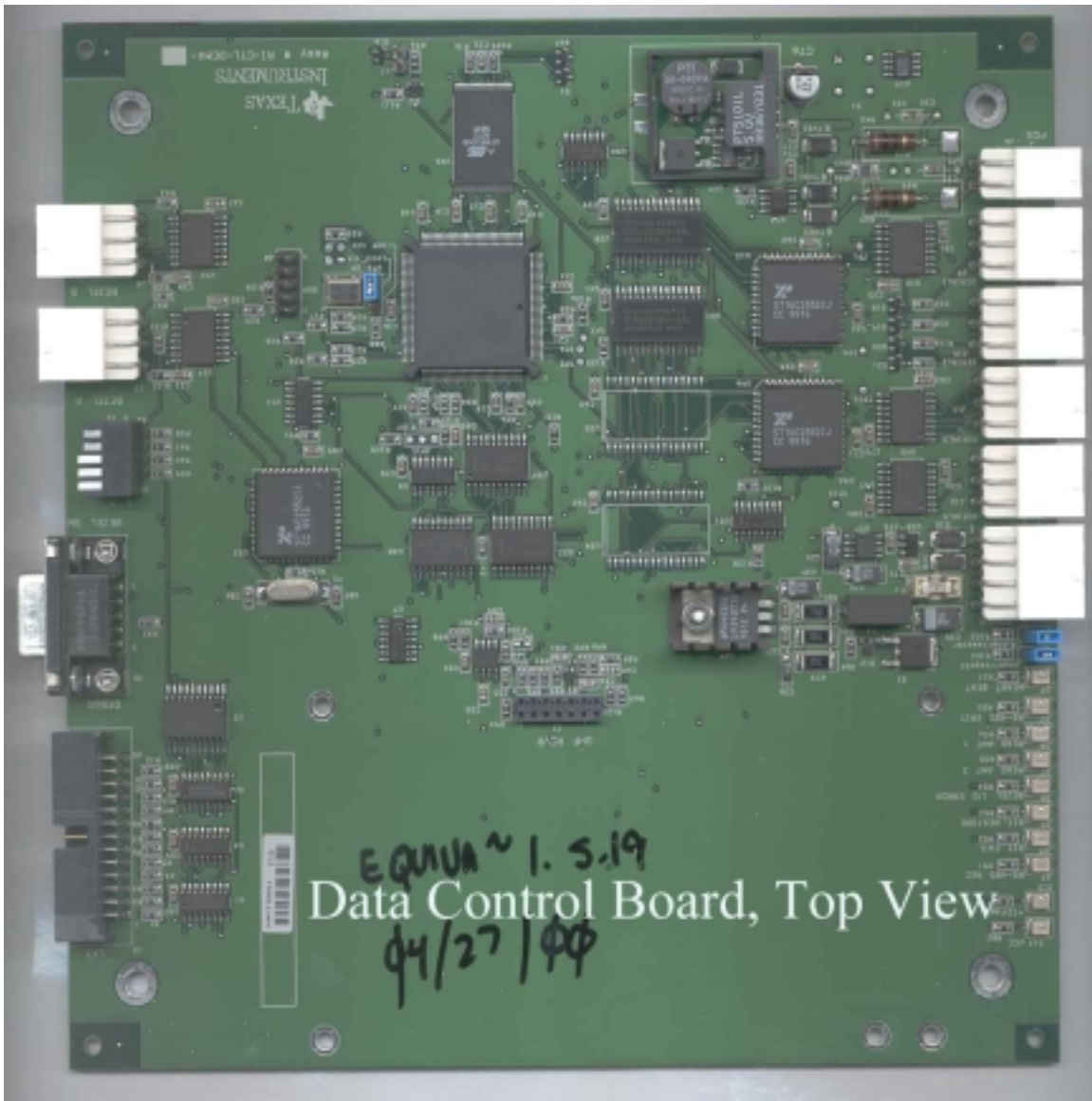
Vericon

ASSY 720582 01
REV

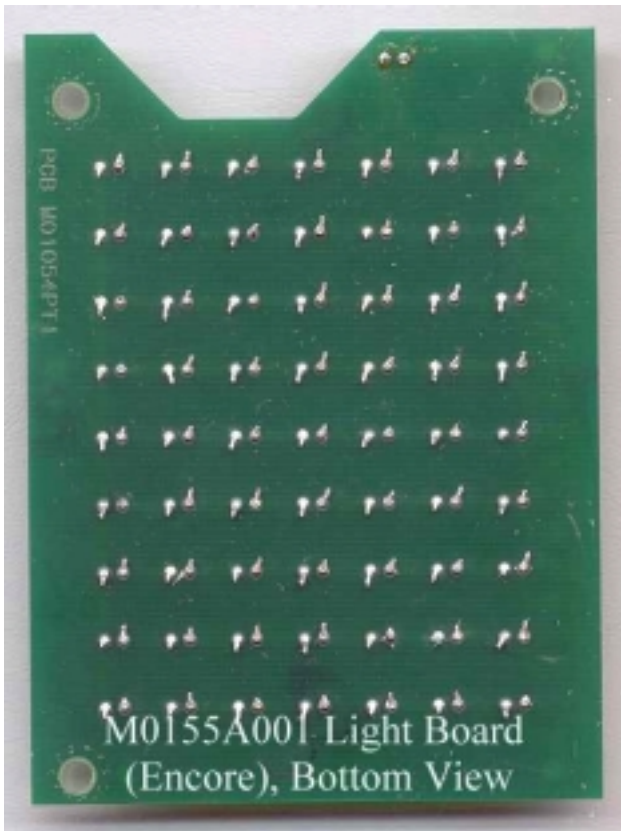


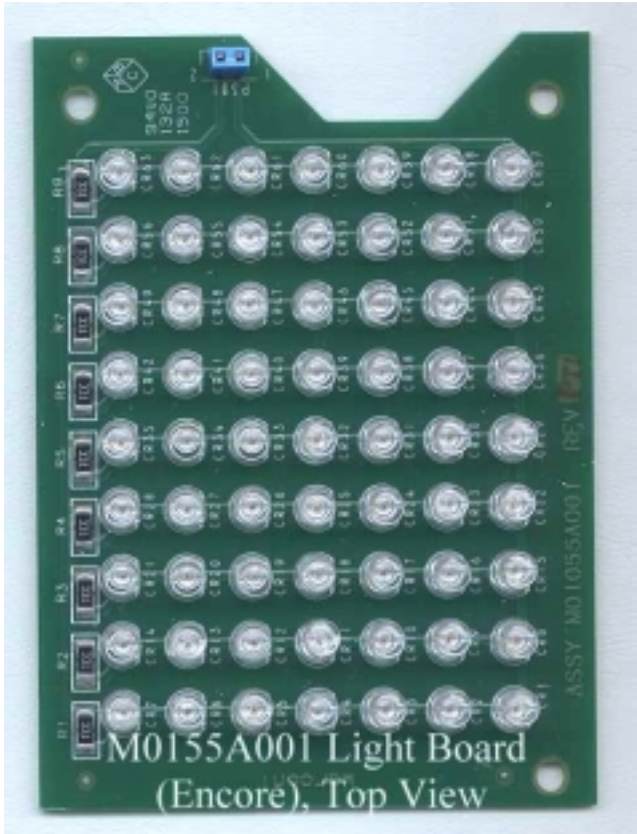


Data Control Board, Bottom View

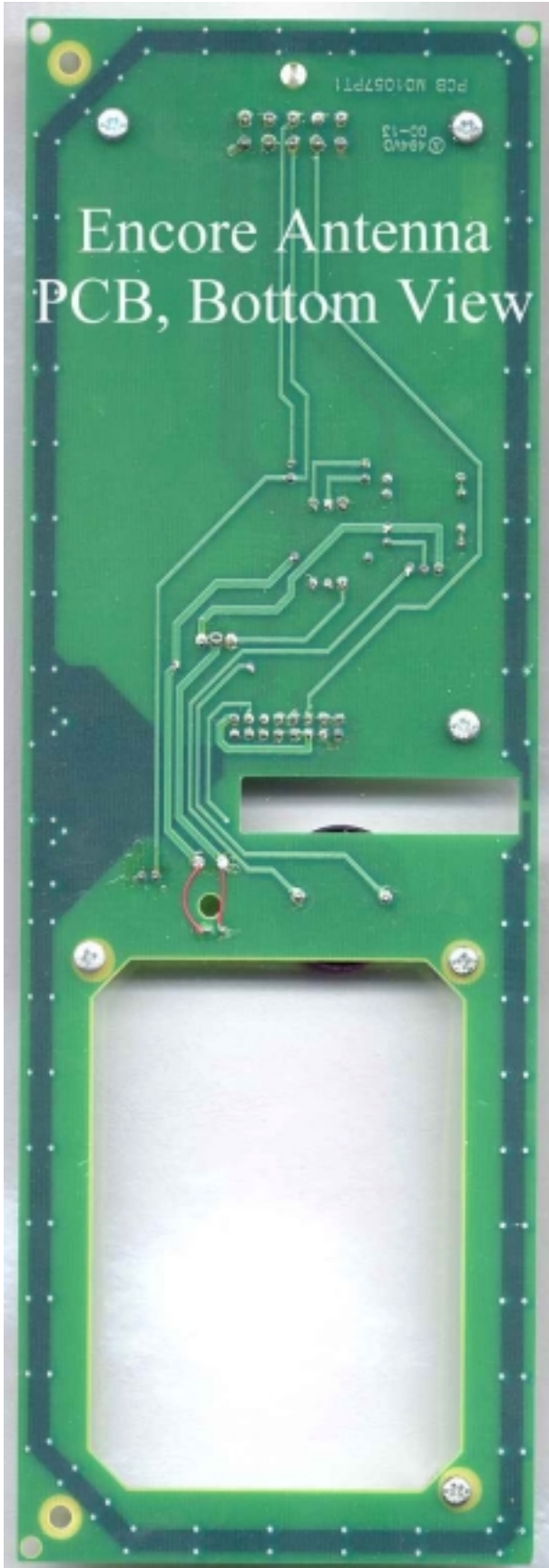


EQUVA ~ 1.5.19
Data Control Board, Top View
04/27/00

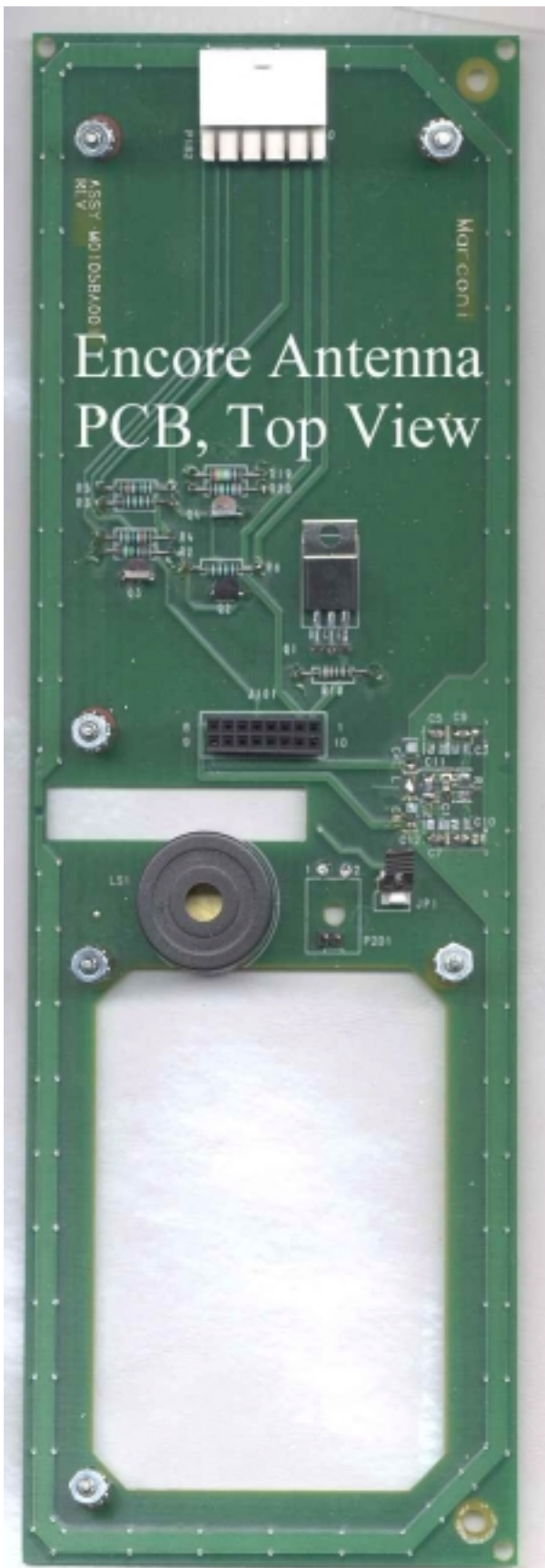




M0155A001 Light Board
(Encore), Top View



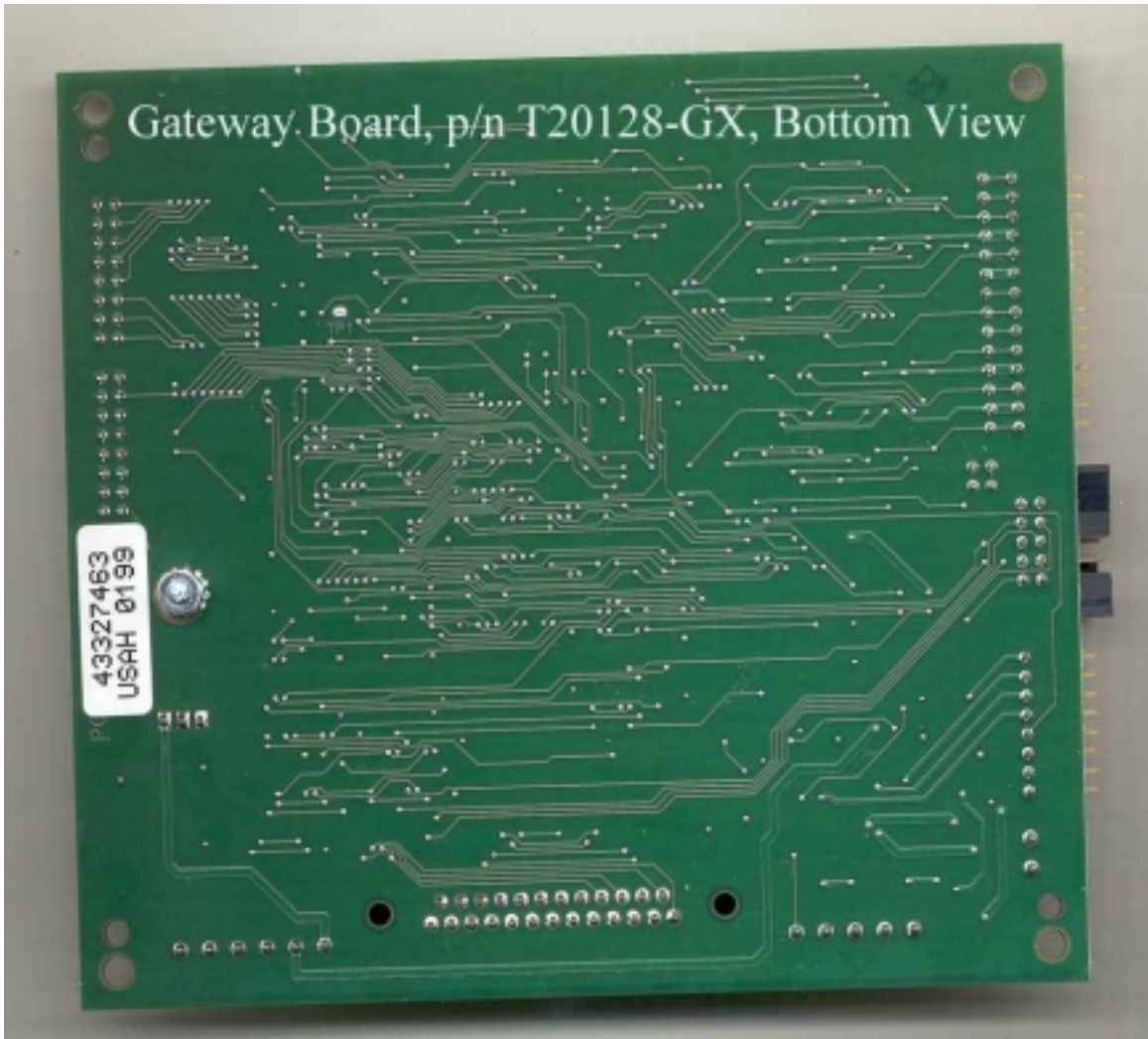
Encore Antenna
PCB, Bottom View



Encore Antenna PCB, Top View

Gateway Board, p/n T20128-GX, Bottom View

43327463
USAH 0199



Gateway Board, p/n T20128-GX, Top View





Multi-Protocol Reader Board (back)
Texas Instruments p/n RI-STU-TRDB-01
Marconi p/n Q13786-02

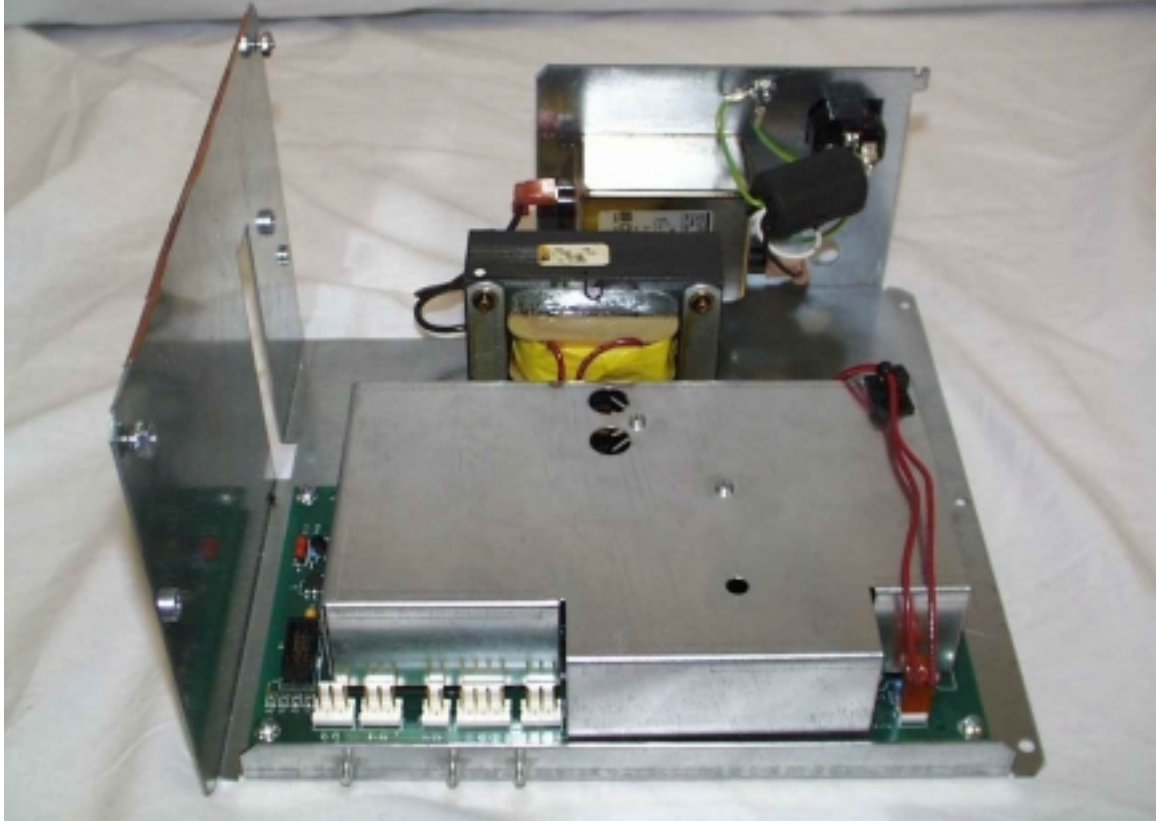


Multi-Protocol Reader Board (front)
Texas Instruments p/n R1-STU-TRDB-01
Marconi p/n Q13786-02

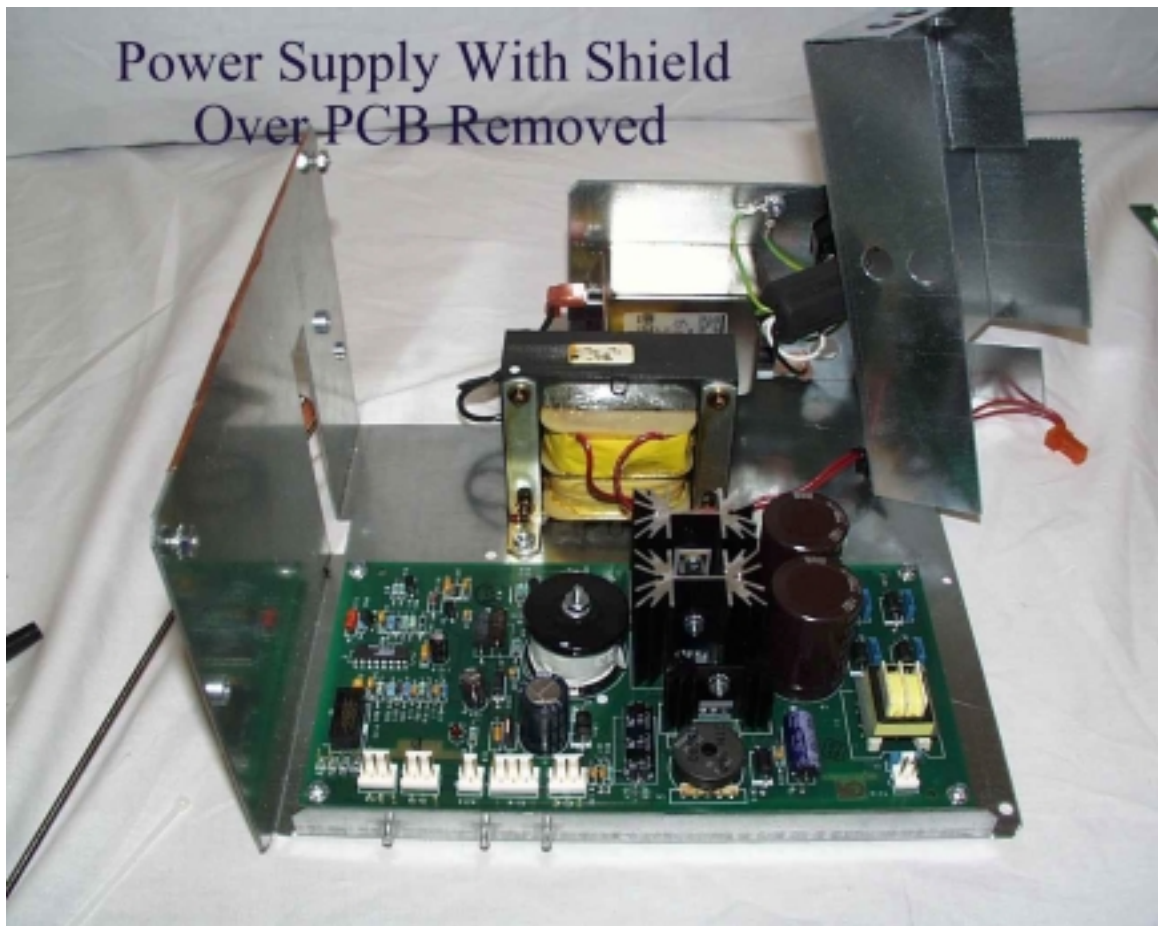
Assembly With Gateway Board and
Data Control Board (underneath shield)



Power Supply With Shield Over PCB



Power Supply With Shield Over PCB Removed



Assembly With Power Supply,
Data Control Board, and Gateway Board



Advantage Narrow Frame Door Assembly



Advantage Wide Frame Door Assembly



TRIND Multi-1 (Encore) in Case;
Power Supply Mounted on Top of Box

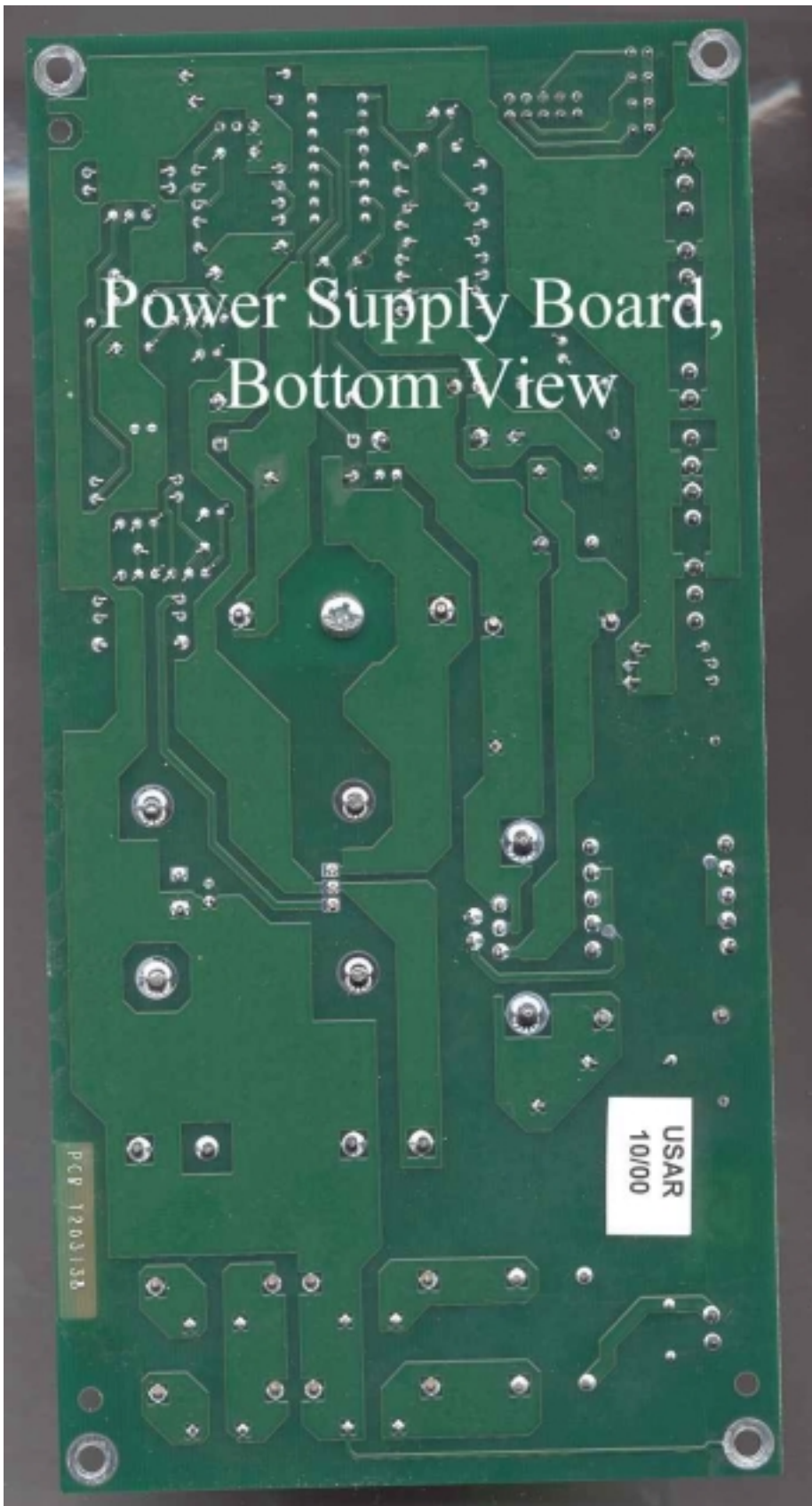


Encore Antenna Mounted in Door



TRIND Multi 1 (Advantage) in Case



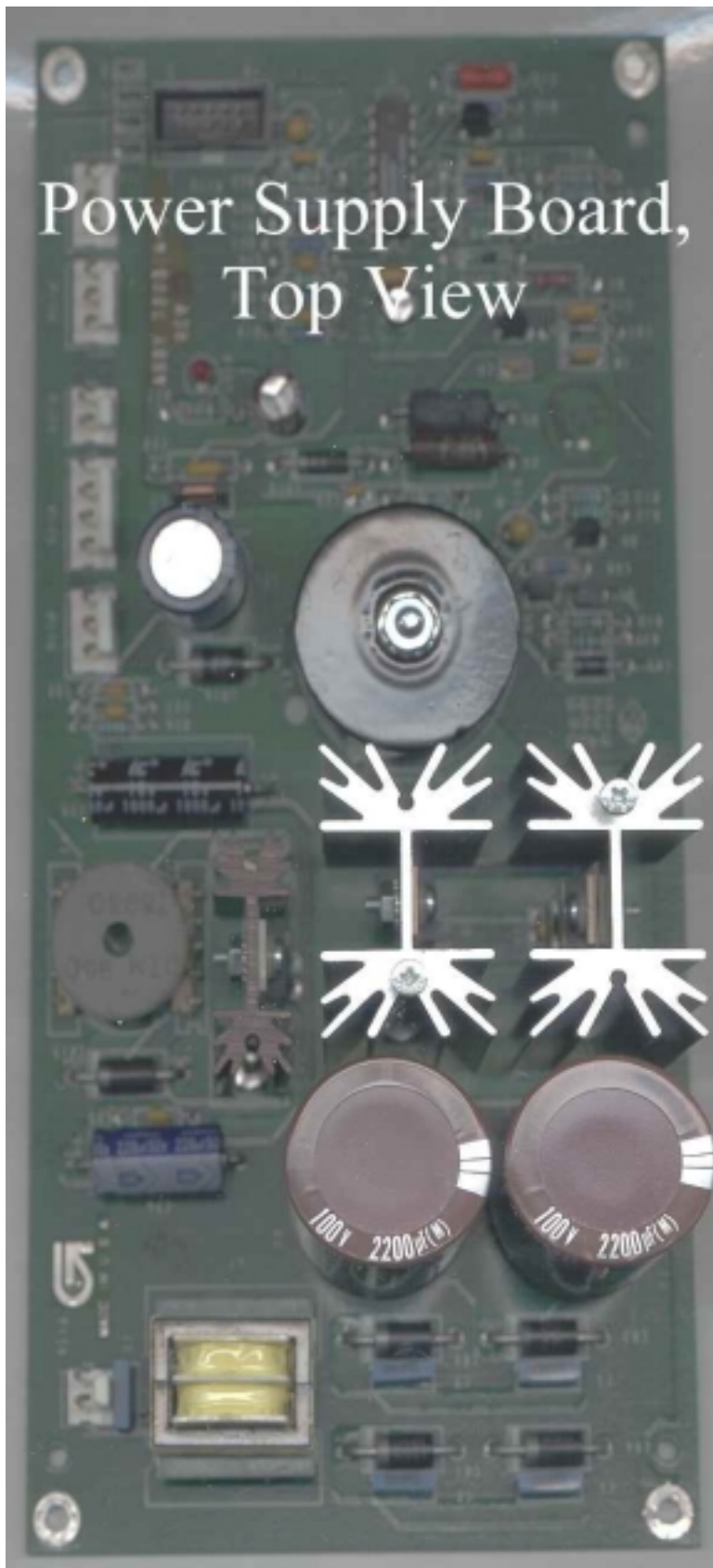


Power Supply Board,
Bottom View

USAR
10/00

PCB 1203138

Power Supply Board, Top View



43636333
USAH1200

PCB 12054

T20545-G1 Light Board PCB, Bottom View

809



T20545-G1 Light Board PCB, Top View

