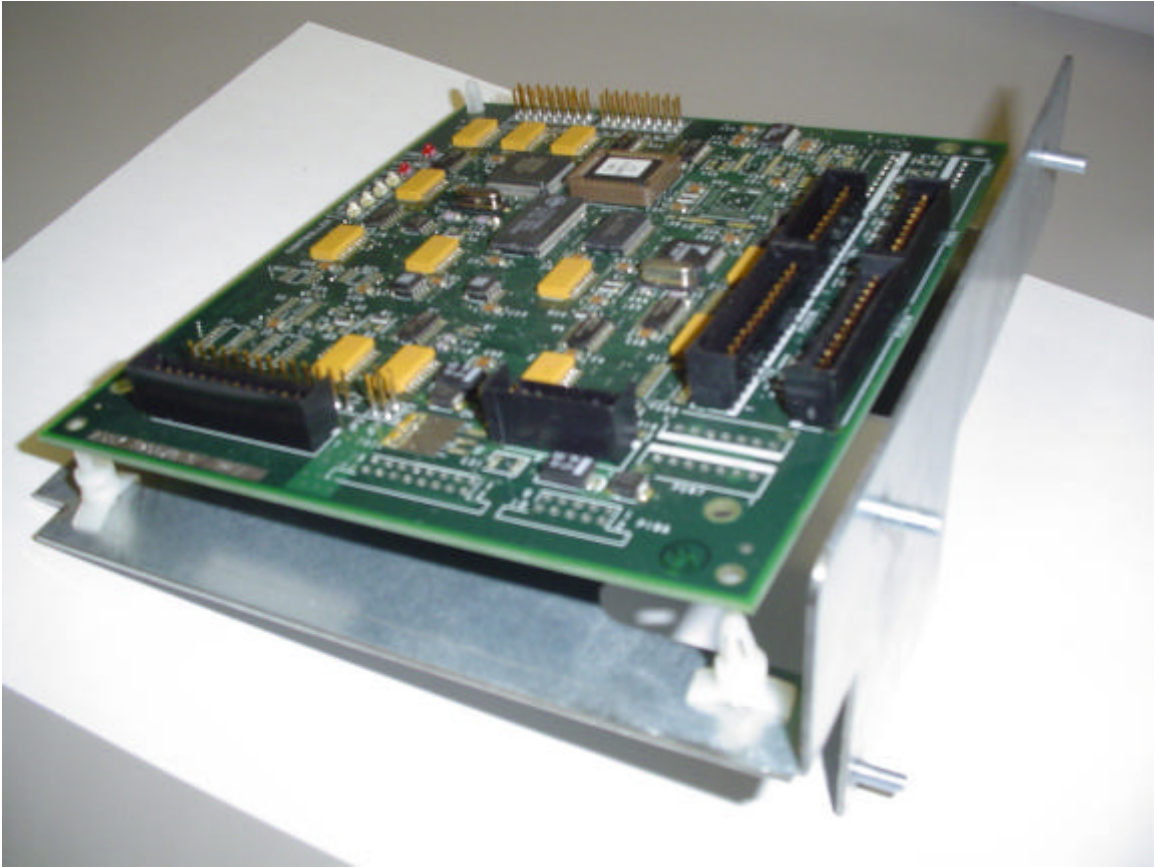


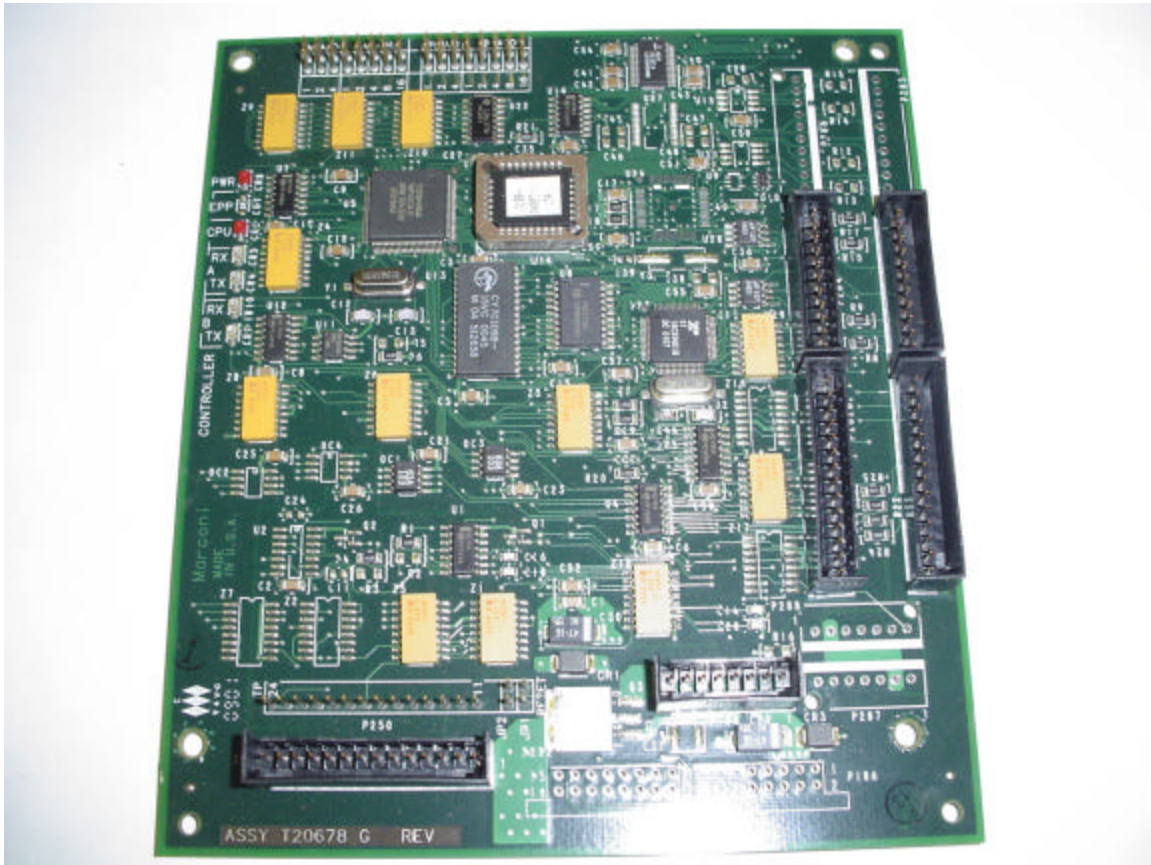
INTERNAL
PHOTOS OF TESTED EUT



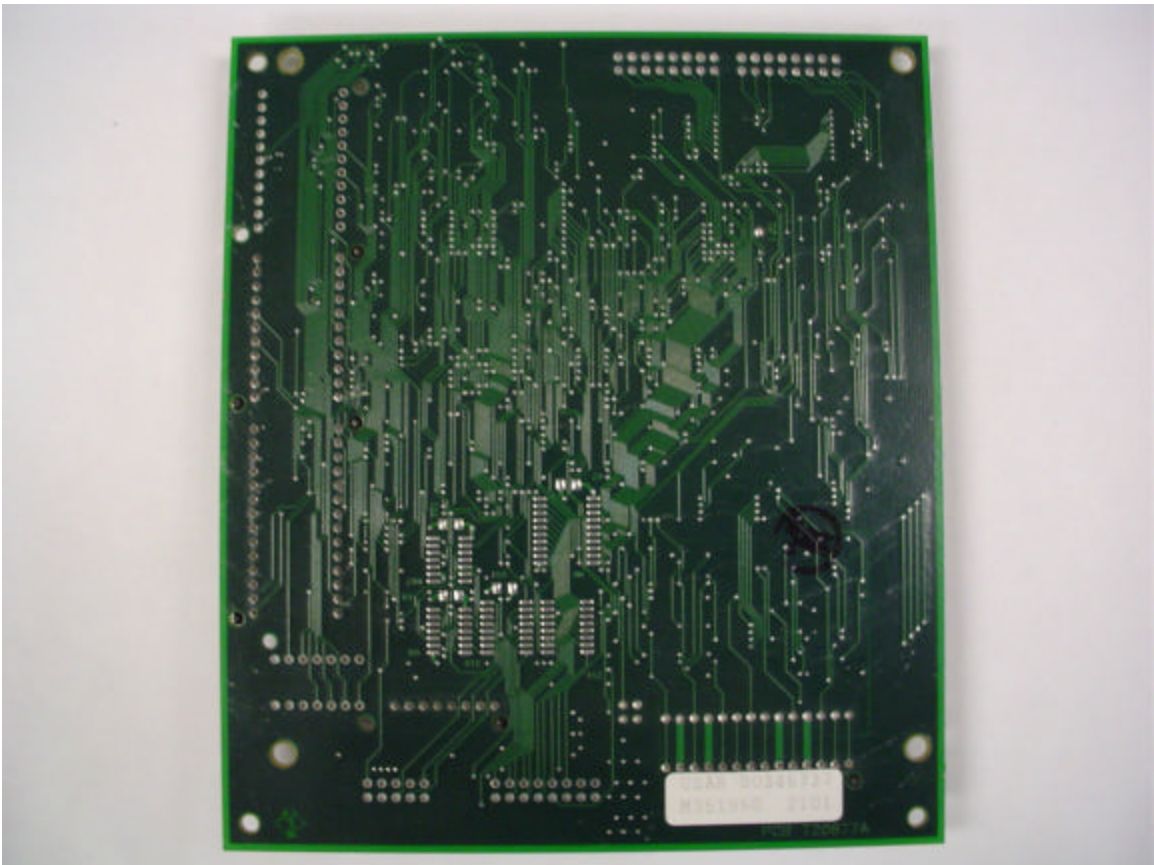
General View - Power Supply, Gateway, and Antenna/Light/Micro-Reader Assembly. Note power supply cables (M01366A001) from the Gateway board to the Micro-reader board have a ferrite (Q11433 108).



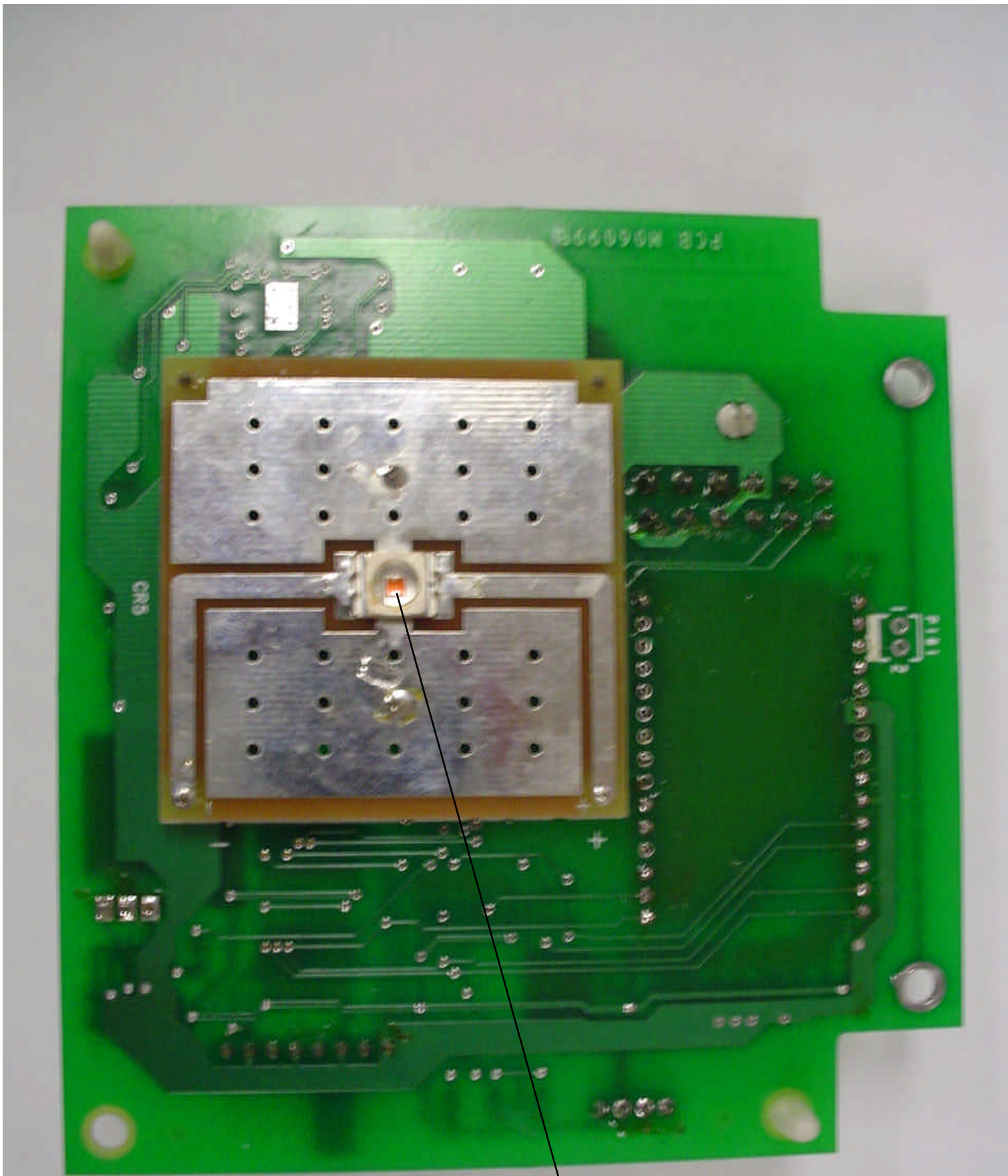
General View - Enhanced Gateway PCA T20678
The Gateway board is an interface between the M06143 Light Inductor Assembly (which contains the M06100 TRIND Light PCA which in turn contains the RI-STU-MRD1-01 which is the actual Intentional radiator) and the Dispenser (Pump head/ point of sale)



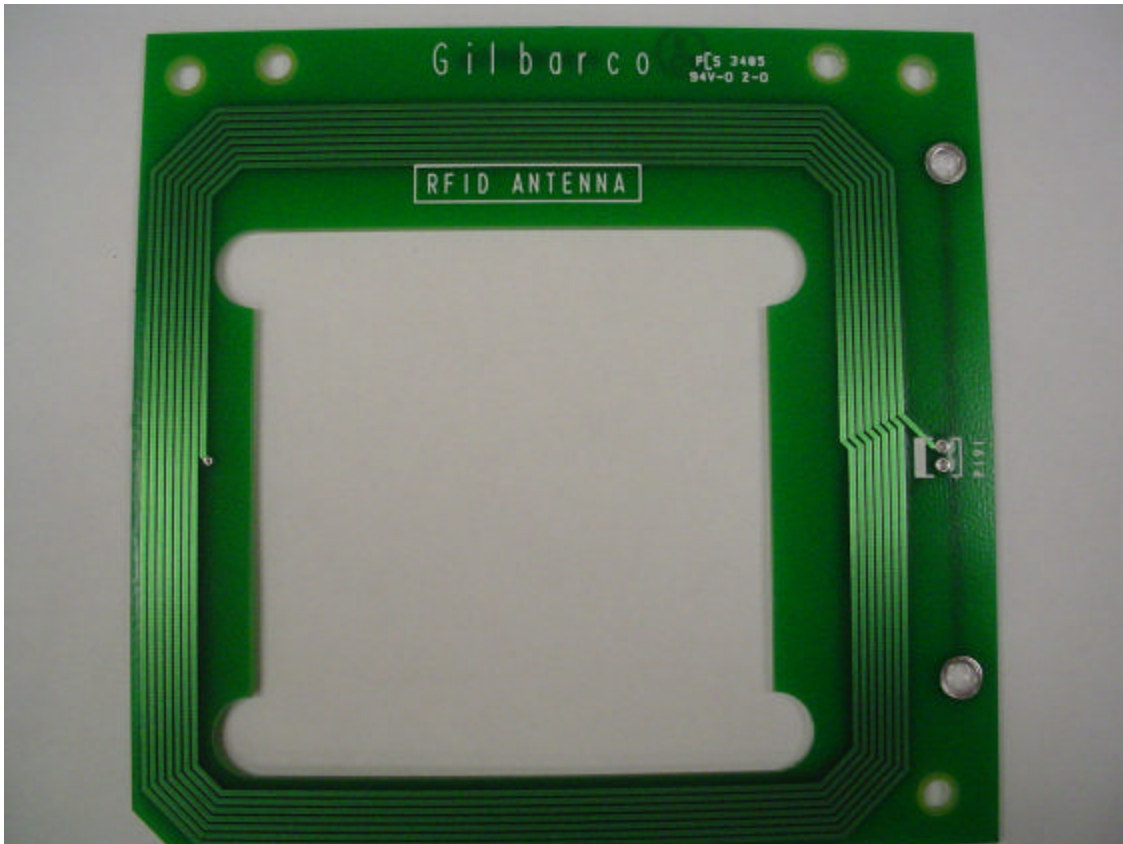
Front View - Enhanced Gateway PCA T20678
Acts as an interface between the RFID board and Dispenser (POS)



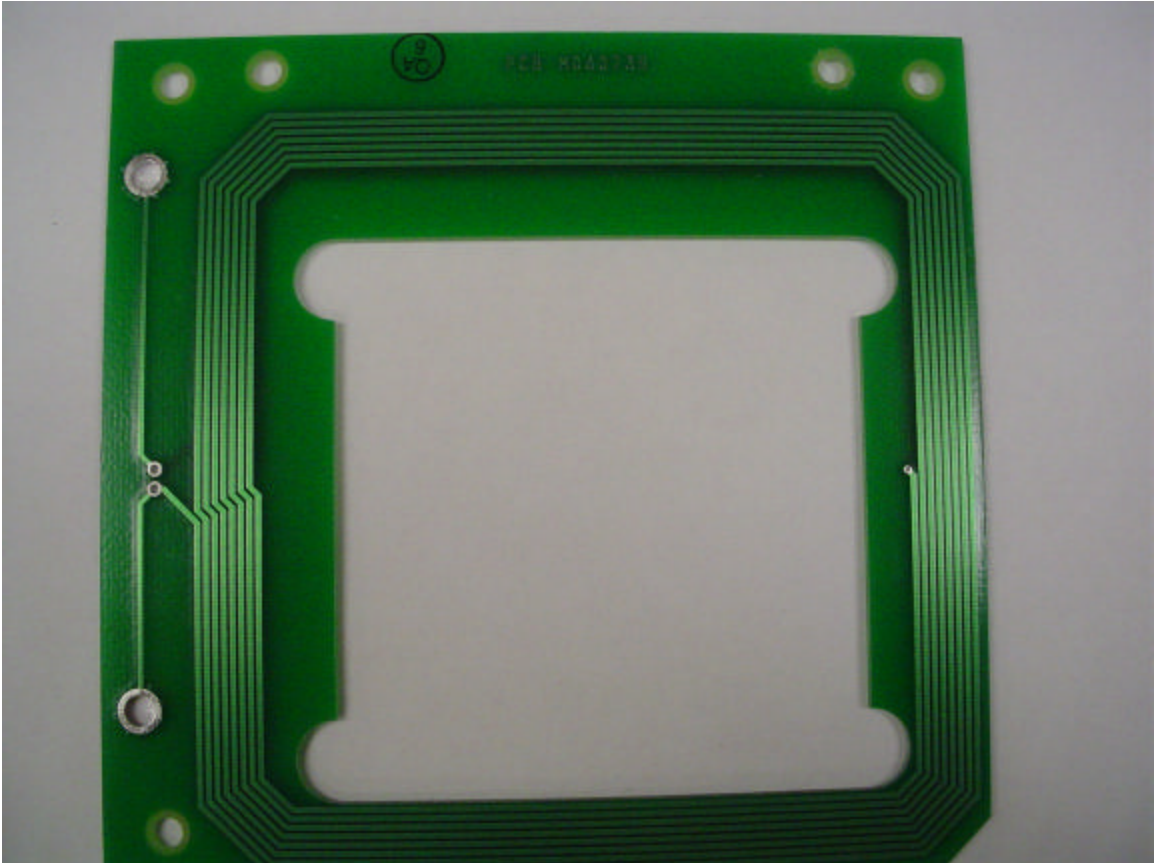
Enhanced Gateway PCA T20678, back view
Acts as an interface between the RFID board and Dispenser (POS)



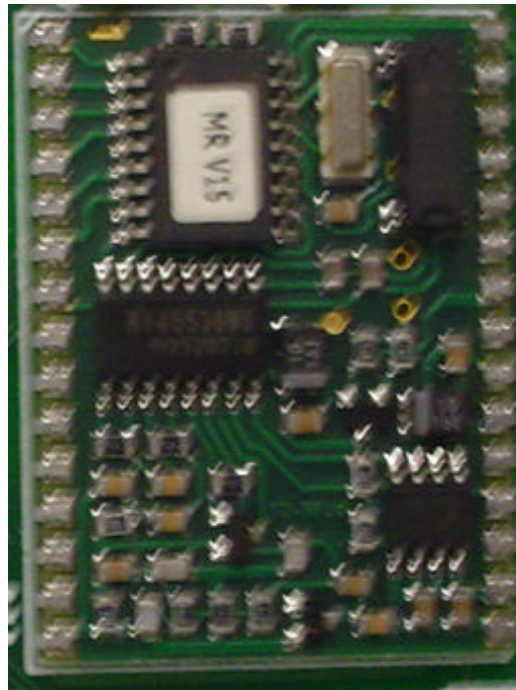
Back of M06100 TRIND LIGHT PCA showing the light



General View -
Bezel Antenna PCA M06074, top view



General View -
Bezel Antenna PCA M06074, bottom view



Cropped close up View -
TI Micro-reader TI # RI-STU-MRD1-01/Gilbarco # Q13551-01