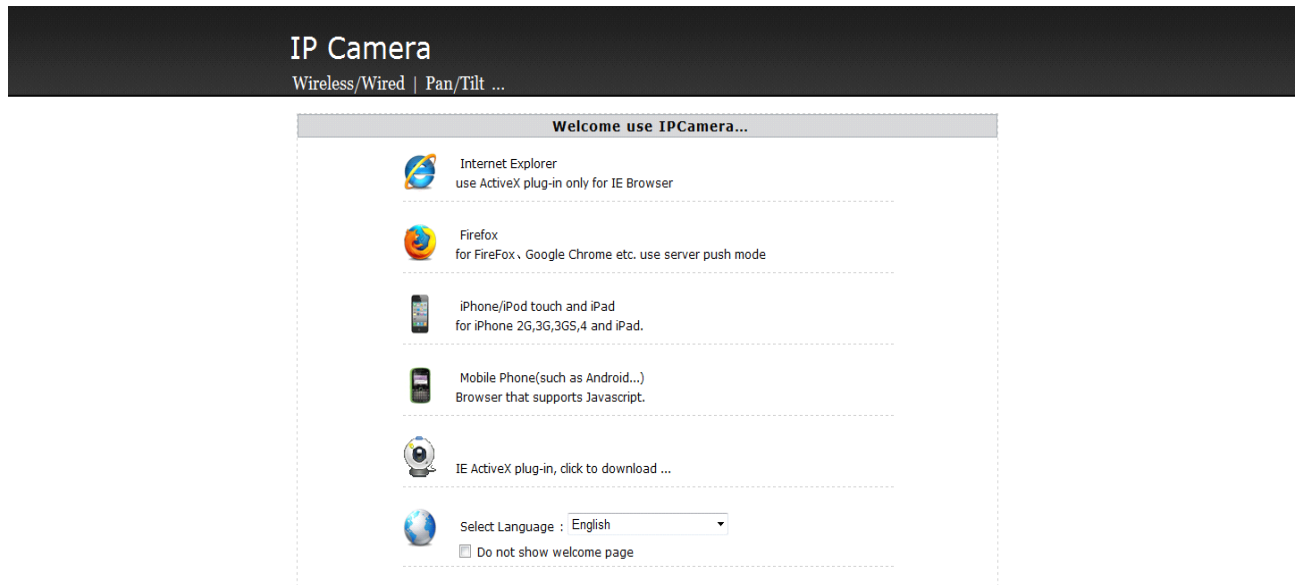


I. Login Screen



a、 You can choose IE、 Firefox or other mobile devices to view the video:



Internet Explorer
use ActiveX plug-in only for IE Browser



Firefox
for FireFox、Google Chrome etc. use server push mode



iPhone/iPod touch and iPad
for iPhone 2G,3G,3GS,4 and iPad.



Mobile Phone(such as Android...)
Browser that supports Javascript.

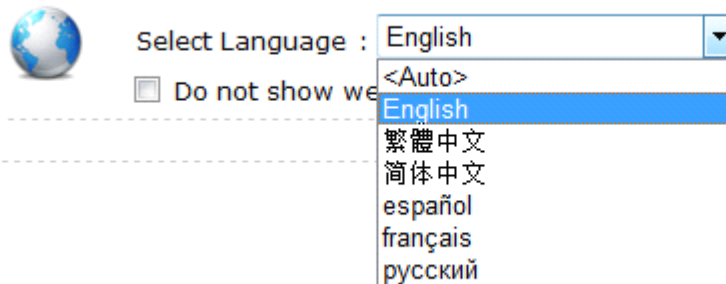
b、 For IE browser, please download and install the Active X, after that, you can view the video.



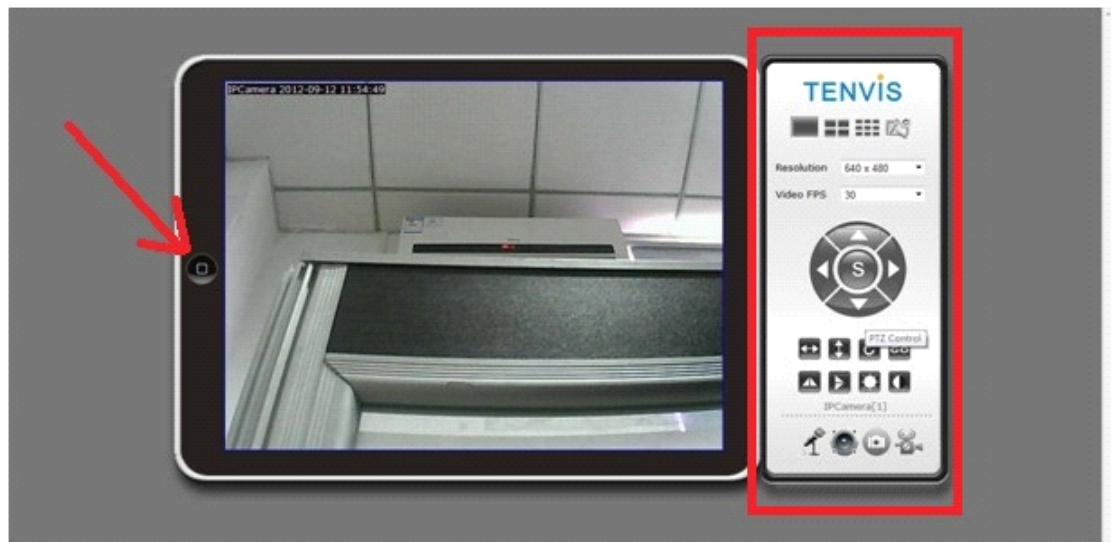
IE ActiveX plug-in, click to download ...



- c、Language selection (when choose "Auto", it will automatically be compatible with your computer language):



II. Live Video



- Click the button : "Home" button at left, we can back to previous interface.。
- At right, there are multi-live setting, pan/tilt, image setting, two-way audio, video record, snapshot button.

1. Multiple Channels Selection

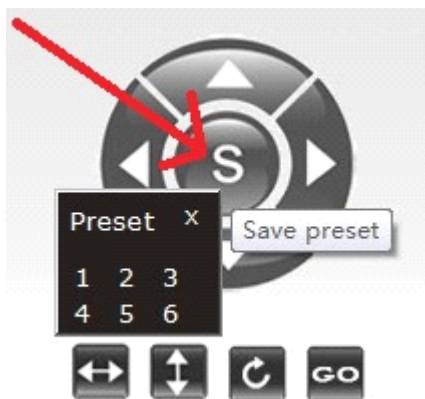


- a、 Please add your devices based on the quantity you have before selecting multi-live devices, red arrow area is for different cameras you have.
- b、 Red arrow directing area is for 1,4,9 windows.
- c、 Select the related camera, you could make snapshots, recording or settings.

2. PTZ and Preset Position.



- a. Up,down, left & right arrow is for controlling the pan/tilt, double arrows and ring arrow is used for cruising.

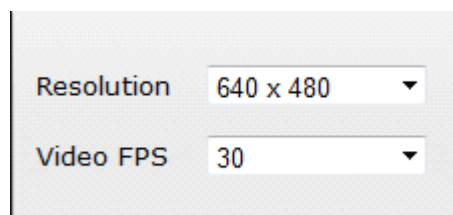


- b. S stands for preset position, click it then you will see the preset position settings, the number stands for current position.,

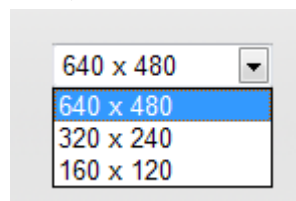


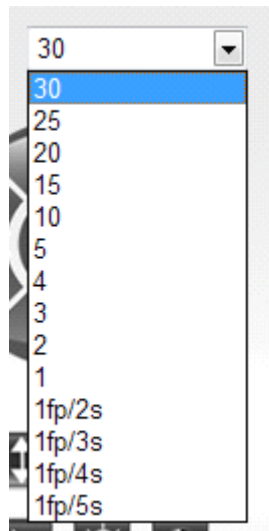
- c、 Click GO and will appear the choice of preset position, you can choose the position you'd like.

3. Resolution Selection:



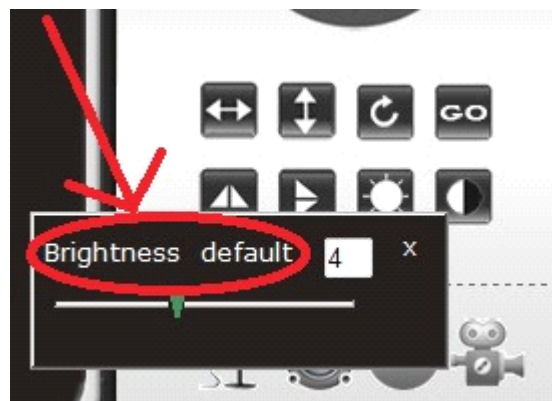
- a. Resolution ratio ,3 choices, they are 640×480 、 320×240 、 160×120





b. Frame rate have 30、25、20, total 3 modes you could choose.

4. Graphic Adjustment



You could choose flip vertical, flip horizontal, brightness adjusting and contrast. You could reset with clicking the default.

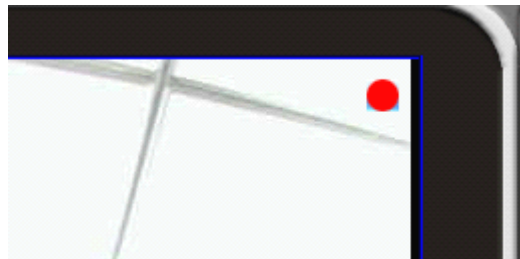
5. Record, Snapshot, and Two-way Audio



- a、 You could click related button to get such function upside.



- b、 After you make the snapshots, please click save button the red arrow direct. Then select the storage area on your computer.



- c、 Click record and then you will see a red point on the right up-side, that means it's recording now.

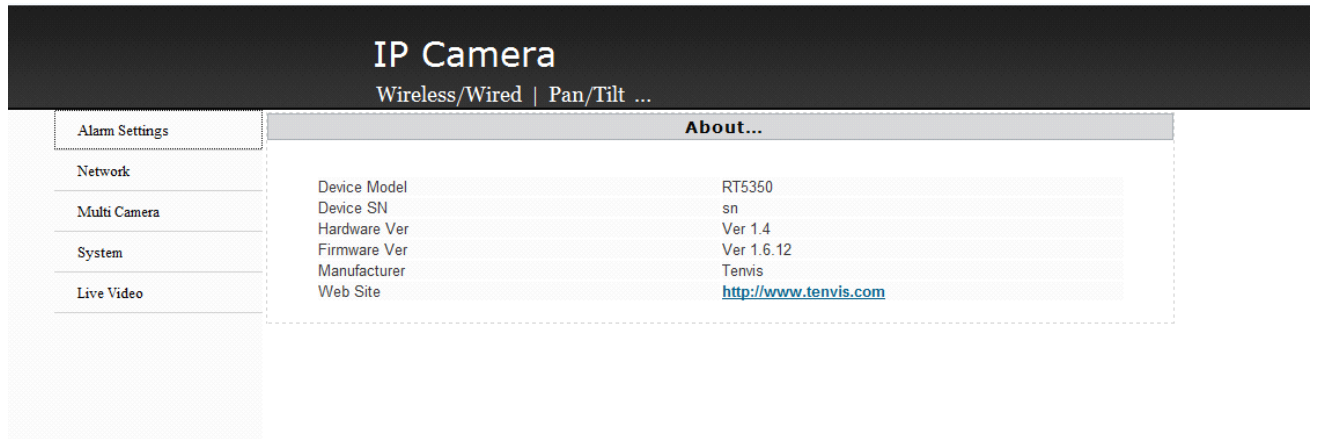
6. Short-cut Buttons



When mouse is using at the windows, there will appear the short-cut buttons, From left to right: Pause/Play; Record; Alarm stop; Wide & narrow screen switching.

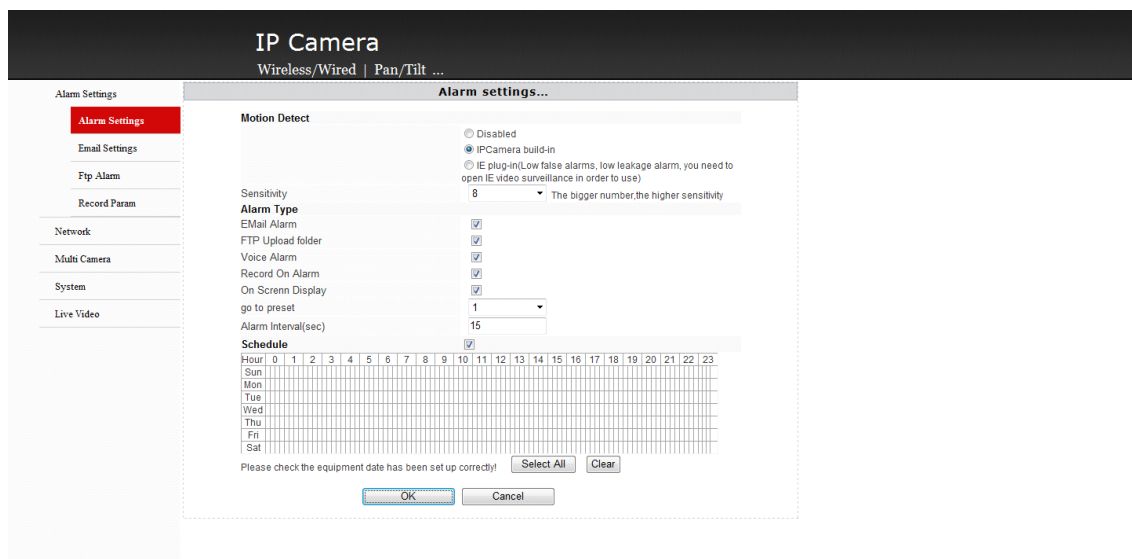
III. Parameter Setting





Click the red arrow directing area, you will see the device information there.

1. Alarm Setting



- Set the motion detection and voice alarm, pictures can be sent to mail box or FTP server. Besides, can record video when alarm.
- On the menu, we also provide motion detection sensitivity adjustment and preset setting when alarm.
- You also could choose daily schedule there.
- After finish the setting, please store your settings then could works.

2. E-mail Setting

IP Camera
 Wireless/Wired | Pan/Tilt ...

Alarm Settings
 Alarm Settings
Email Settings
 Ftp Alarm
 Record Param
 Network
 Multi Camera
 System
 Live Video

Email Settings...

Sender(xxx@xxx.xxx)	ipcamera_test1@163.com	
Recipient(xxx@xxx.xxx;xxx@xxx.xxx...)	ipcamera_test2@163.com; ipcamera_test3@163.com <small>↓ Add more recipient split with ;</small>	
SMTP Server	smtp.163.com	@163.com
SMTP Port(Default 25)	25	
Transport Layer Security	Gmail use STARTTLS at 25/587 port or TLS at 465 port.	
SMTP User	ipcamera_test1@163.com	
SMTP Password	●●●●●●●●	
Report ip address by mail:	<input checked="" type="checkbox"/>	

- a、 Please enter write sender' and receiver's email in the proper area. Please add ; when have many email addresses there.
- b、 SMTP Server is the same as the sender's email SMTP .
- c、 SMTP port is 25.
- d、 User name and password please use the sender's information there.
- e、 After finishing entering, please save it to make the setting work. You could make a test to check whether it works or not.

3. FTP Setting

IP Camera
 Wireless/Wired | Pan/Tilt ...

Alarm Settings
 Alarm Settings
 Email Settings
Ftp Alarm
 Record Param
 Network
 Multi Camera
 System
 Live Video

FTP Settings...

FTP Server	ftp://127.0.0.1	
FTP Port(Default 21)	21	
FTP User	lsg	
FTP Password	●●●	
FTP Upload folder	lsg	

- Please enter right sever address for the FTP.在 FTP
- FTP port is 21.
- User name and password is the same as you use on FTP.
- Upload the menu and make it as your save menu.
- After the filling, please save it and then the setting works. You could make a test on it to check if it works.

4. Record Parameter

IP Camera

Wireless/Wired | Pan/Tilt ...

Alarm Settings

Alarm Settings

Email Settings

Ftp Alarm

Record Param

Network

Multi Camera

System

Live Video

Record Settings...

Record Path E:\
Browse

Record path on alarm E:\
Browse

Record quality 100 (1--100 Recommend >40)
Save

Note: this page configuration save to the current user computer, if is Windows Vista and above the user please use administrator identity open browser save configuration

- Click the recording and alarm route , you could change the rout there.
- Recording quality edit box could change the quality of the video, please save it after the settings.

5. Network Setting

The screenshot displays the 'IP Camera' configuration interface. On the left is a sidebar menu with options: Alarm Settings, Network, Network Param (highlighted in red), WIFI, DDNS, Multi Camera, System, and Live Video. The main area is divided into two sections: 'Network Configuration...' and 'UPNP Settings...'. The 'Network Configuration...' section contains fields for Device name (IPCamera), Use DHCP (unchecked), IP Address (192.168.1.239), Net Mask (255.255.255.0), Default Gateway (192.168.1.1), DNS Server, and Web port (default 80). Below these fields are 'OK' and 'Cancel' buttons. The 'UPNP Settings...' section has a 'UPNP Enable' checkbox (checked) and a 'Status' field showing 'Port Map Successful Windows Find Successful'. It also has 'Save' and 'Cancel' buttons.

- a、 You could change the device name on the name edit box.
- b、 If your network support DHCP service, please click dynamic obtaining IP address, the camera will automatic obtaining the IP address.
- c、 IP address edit frame shows the current IP address if the device, you could modify it there..
- d、 Subnet mask edit box shows the current device subnet mask, you could revise it there.
- e、 Default edit box shows the current gateway, you could revise it there
- f、 WEB port edit box shows the current device's WEB. you could revise it there WEB
- g、 Please circle UPNP, it can make the camera automatically achieve port forwarding to your wireless router, connect your router to achieve internet view. your wireless router also should have UPNP function.
- h、 After finishing, please remember to save it to make it effect.

6. WIFI Setting

IP camera supports WIFI:IEEE802.11b/g

IP Camera

Wireless/Wired | Pan/Tilt ...

Alarm Settings

Network

Network Param

WIFI

DDNS

Multi Camera

System

Live Video

WIFI Link Status

Connect AP: SC11 <--> 00-27-19-A4-8B-50 IP Address: Disconnect

Station Profile(Up to 4)

Profile	SSID	Channel	Authentication
Edit			Delete
			Activate

Station Site Survey...

SSID	RSSI	Channel	Encryption
3GSM	[Signal Icon]	6	Unknown
SC11	[Signal Icon]	1	WPA2-PSK

Site survey page shows information of APs nearby. You may choose one of these APs connecting or adding it to profile.

Connected <--> SC11 Connect Rescan

SSID: SC11

Security Policy

Security Mode: WPA2-Personal ▼

WPA

WPA Algorithms:
☐ TKIP ☒ AES

Pass Phrase:

Apply
Cancel

- a、Click scan, and you will see the Wifi there, choose your own Wifi and connect it.
- b、Choose the right Security Mode and WPA Algorithms and then you will see pass phrase and then enter the Wifi password, click apply and then works.

IP Camera

Wireless/Wired | Pan/Tilt ...

Alarm Settings

Network

Network Param

WIFI

DDNS

Multi Camera

System

Live Video

WIFI Link Status

Connect AP: Disconnected IP Address:

Station Profile(Up to 4)

Profile	SSID	Channel	Authentication
<input checked="" type="checkbox"/> PROF001	SC11	1	WPA2-PSK
Edit			Delete
			Activate

Station Site Survey...

SSID	RSSI	Channel	Encryption
SC11	[Signal Icon]	1	WPA2-PSK
3GSM	[Signal Icon]	6	Unknown

Site survey page shows information of APs nearby. You may choose one of these APs connecting or adding it to profile.

Connected <--> SC11 Connect Rescan

Station Profile(Up to 4)				
<input checked="" type="checkbox"/>	Profile	SSID	Channel	Authentication
	PROF001	SC11	1	WPA2-PSK
	<input type="button" value="Edit"/>	<input type="button" value="Delete"/>	<input type="button" value="Activate"/>	

- c. If disconnect, it shows red circle, when succeed, it shows green circle.
- d. All the settings upside need be the same as you set on your router, please check your access point or the manual book of the router to check it or consult the web administrator.

7. DDNS

Dynamic realm name is used as a static realm name to visit a dynamic one. When you access to ISP network, the device will get a temporary dynamic IP address, the dynamic real name will track the address. Even the address changed, you also could use a static realm to visit this device from remote.

IP Camera

Wireless/Wired | Pan/Tilt ...

Alarm Settings

Network

Network Param

WIFI

DDNS

Multi Camera

System

Live Video

Built-in DDNS configuration...

Enable DDNS

Status

URL

☒

DDNS Update Failed;
http://aovh.tennis.info:82
http://113.104.202.39:82

Other DDNS configuration

DDNS Server

Account

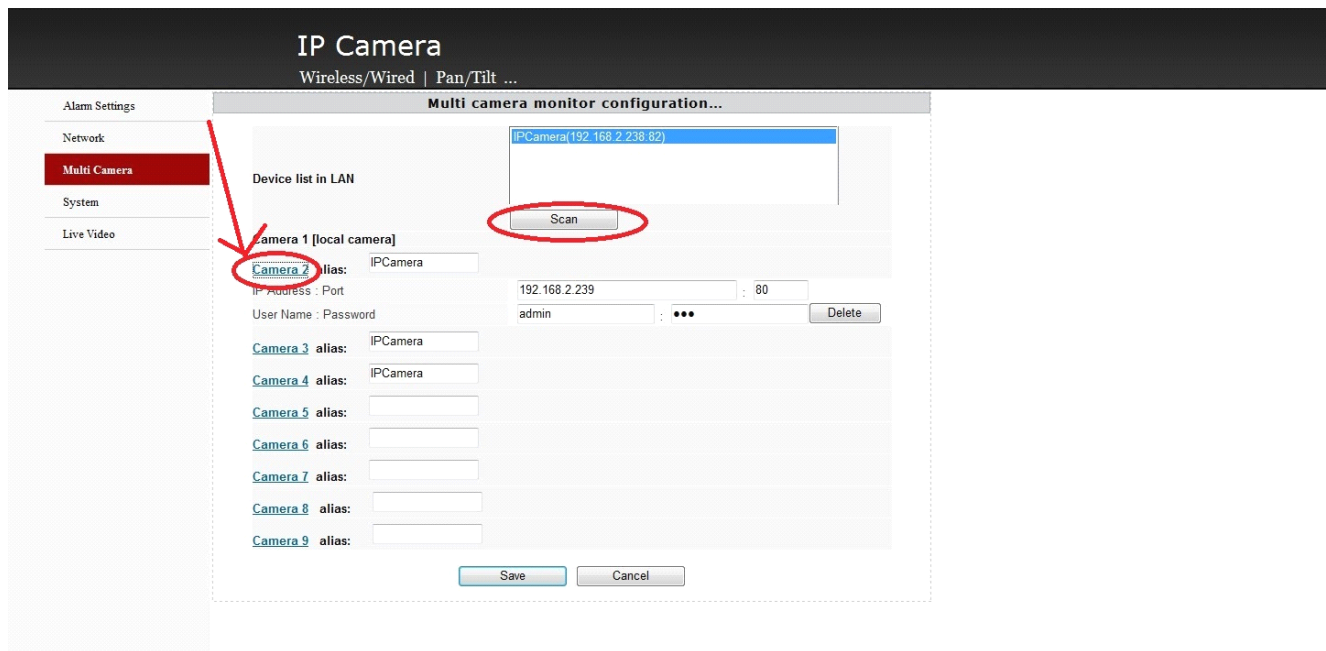
Password

DDNS

None

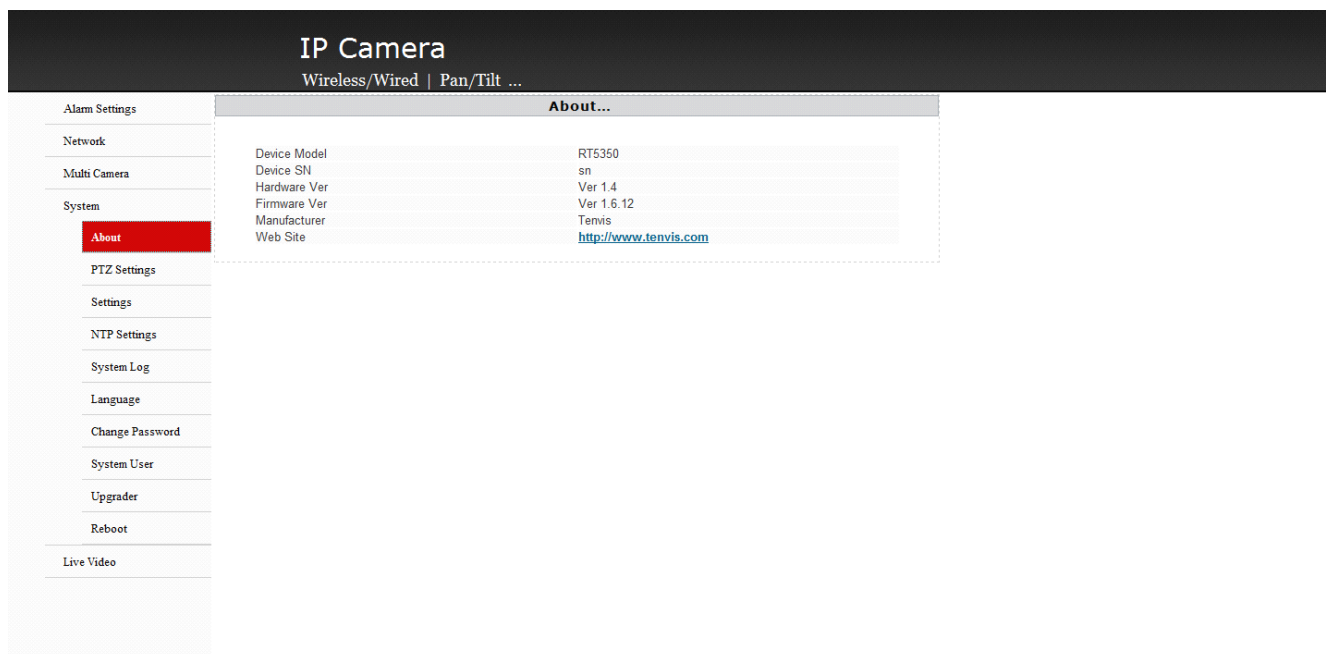
- a. Built in DDNS is what we offer you on the gift box,, user name and the passwords.
- b. If you want to setting the DDNS yourself, please setting them on the third part DDNS setting area to select the right sever and then enter the right account, command and realm name. Save it and then works.
- c. If you need internet to visit the camera, please open UPNP or open the port on the router, you could refer to the manual book and also consult the webmaster.

8. Multi-live Channels Setting



Add other cameras and click the area the photos shows and enter the right IP Address or realm name, port, user name, password, and they save it. You could click the multi graphics there.

9. Camera Basic Status



Show device info.

10. PTZ Setting

IP Camera
Wireless/Wired | Pan/Tilt ...

Alarm Settings
Network
Multi Camera
System
About
PTZ Settings
Settings
NTP Settings
System Log
Language
Change Password
System User
Upgrader
Reboot
Live Video

PTZ Settings...

Enable PTZ	<input checked="" type="checkbox"/>
Enable Preset	<input checked="" type="checkbox"/>
PTZ Initial position	1
PTZ Speed	12

The higher number, The higher speed

Save Cancel

Enable or disable PTZ function, preset position, adjust PTZ initial position or PTZ speed.

11. System Setting

IP Camera
Wireless/Wired | Pan/Tilt ...

Alarm Settings
Network
Multi Camera
System
About
PTZ Settings
Settings
NTP Settings
System Log
Language
Change Password
System User
Upgrader
Reboot
Live Video

Settings Management...

Export Settings
Export Button: Export

Import Settings
Settings file location: 浏览...
Import Cancel

Load Factory Defaults
Load Default Button: Load Default

- Derive setting could help you make the backup file
- Lead-in could choose backup file and recover it.
- Recover the factory setting would empty any settings you have and come back to the original factory default.

12. Time Setting

IP Camera

Wireless/Wired | Pan/Tilt ...

Alarm Settings

Network

Multi Camera

System

About

PTZ Settings

Settings

NTP Settings

System Log

Language

Change Password

System User

Upgrader

Reboot

Live Video

System Language...

Select Language

English

Do not show welcome page

☐

UI Color style

☒ Gray ☐ Blue

Save

Cancel

You could choose the operation language and operation window as your choice

15. Modify Password

IP Camera

Wireless/Wired | Pan/Tilt ...

Alarm Settings

Network

Multi Camera

System

About

PTZ Settings

Settings

NTP Settings

System Log

Language

Change Password

System User

Upgrader

Reboot

Live Video

Change Password...

user name

admin

old password

new password

confirm password

Save

Cancel

Modify current password.

16. User Management

IP Camera

Wireless/Wired | Pan/Tilt ...

Alarm Settings

Network

Multi Camera

System

About

PTZ Settings

Settings

NTP Settings

System Log

Language

Change Password

System User

Upgrader

Reboot

Live Video

User management...

System user [admin]

user defined

user name: 123

user name: 12

user name:

user name:

user name:

user name:

Password: ●●●

Password: ●●

Password:

Password:

Password:

Password:

Group: Operator

Group: Guest

Group: Guest

Group: Guest

Group: Guest

Group: Guest

Delete

Delete

Delete

Delete

Delete

Delete

Save

Cancel

- Administrator could operate, add, cancel the user
- There have 3 authorities for this camera: Visitor, operator, administrator.
 - Visitor: Only watch couldn't do other operations.
 - Operator: Only could Watch, control the PAN/TILT.
 - Administrator: Could whole control of your camera.

17. Firmware Upgrading

IP Camera

Wireless/Wired | Pan/Tilt ...

Alarm Settings

Network

Multi Camera

System

About

PTZ Settings

Settings

NTP Settings

System Log

Language

Change Password

System User

Upgrader

Reboot

Live Video

Firmware Upgrade...

Upgrade you device to new version....

System upgrade may need about 1 minute

Attention: please make sure to use the correct upgrade package, otherwise, it will cause the system cannot startup.

Attention: Please don't use WLAN upgrade your system.

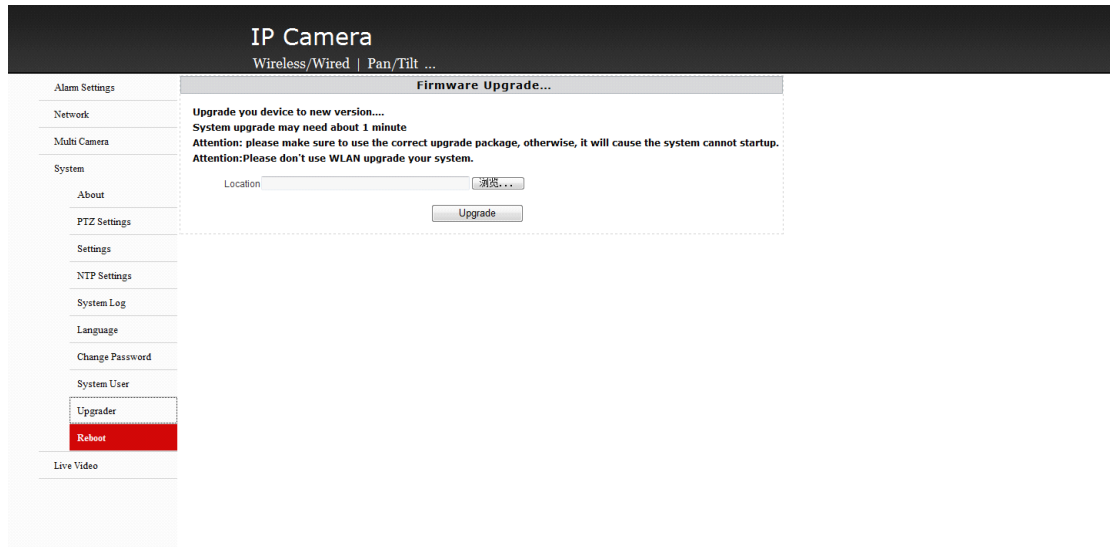
Location

浏览...

Upgrade

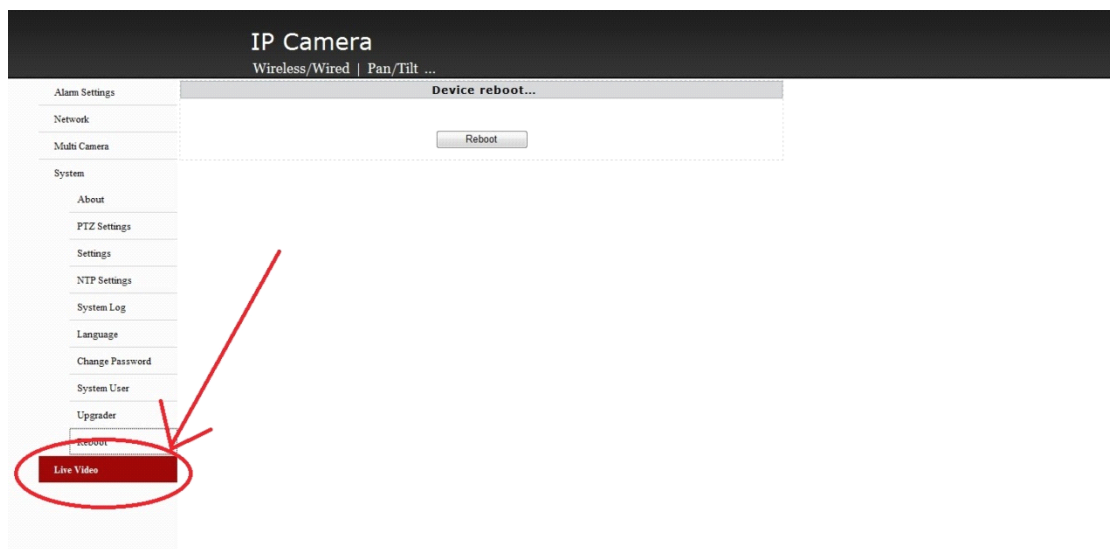
User could choose right firmware to upgrade your camera.

18. Reboot System



Click rebooting button and reboot the camera

19. Real-time Monitoring



Click the real time monitoring and back to the video page.

FCC STATEMENT

1. This device complies with Part 15 of the FCC Rules.

Operation is subject to the following two conditions:

- (1) This device may not cause harmful interference, and
- (2) This device must accept any interference received, including interference that may cause undesired operation.

2. Changes or modifications not expressly approved by the party responsible for compliance could void the user's authority to operate the equipment.

NOTE: This equipment has been tested and found to comply with the limits for a Class B digital device, pursuant to Part 15 of the FCC Rules. These limits are designed to provide reasonable protection against harmful interference in a residential installation. This equipment generates, uses and can radiate radio frequency energy and, if not installed and used in accordance with the instructions, may cause harmful interference to radio communications. However, there is no guarantee that interference will not occur in a particular installation. If this equipment does cause harmful interference to radio or television reception, which can be determined by turning the equipment off and on, the user is encouraged to try to correct the interference by one or more of the following measures:

- Reorient or relocate the receiving antenna.
- Increase the separation between the equipment and receiver.
- Connect the equipment into an outlet on a circuit different from that to which the receiver is connected.
- Consult the dealer or an experienced radio/TV technician for help.

FCC Radiation Exposure Statement:

This equipment complies with FCC radiation exposure limits set forth for an uncontrolled environment. In order to avoid the possibility of exceeding the FCC radio frequency exposure limits, Human proximity to the antenna shall not be less than 20cm (8 inches) during normal operation.