

6 After choosing a network name and channel and adjusting encryption and password options as described below, click [OK].

- **Name:** Enter a name of up to 32 characters.
- **Channel:** Choose a channel.
- **Enable encryption (using WEP):** Select this option to enable WEP encryption.
- **Password:** If WEP encryption is enabled, enter a security key. The length of the key depends on the option selected for [WEP key]:
 - [40-bit (more compatible)]:** Enter a five-character ASCII or ten-digit hexadecimal key.
 - [128-bit]:** Enter a 13-character ASCII or 26-digit hexadecimal key.ASCII keys may contain letters, punctuation, and the numbers 0–9, hexadecimal keys the numbers 0–9 and the letters a, b, c, d, e, and f.
- **WEP key:** Choose the length of the WEP key.

Computer-to-Computer

Please enter the following information to create a Computer-to-Computer Network:

Name: WT-4

Channel: Automatic (11)

Enable encryption (using WEP)

Password:

Confirm:

WEP key: 40-bit (more compatible)

The WEP key must be entered as exactly 5 ASCII characters or 10 hex digits.

Hide Options Cancel OK

Network setup is now complete. Proceed to “Operating the WT-4 for Computer” (pg.47), “Operating the WT-4 for FTP” (pg.107).

❑ Connecting to an Infrastructure Network

Procedures for connecting your computer to a wireless LAN access point are described here.

Configuring the Wireless LAN Access Point

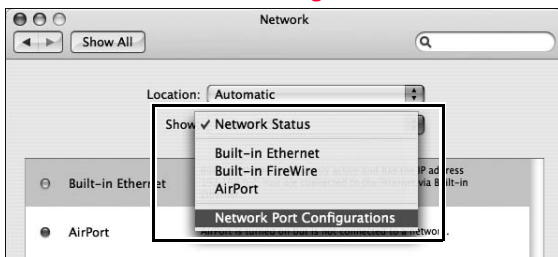
Following the instructions in the manual for the wireless LAN access point, choose a network name (SS-ID), authentication, encryption, security key, and key index.

Configuring the Host

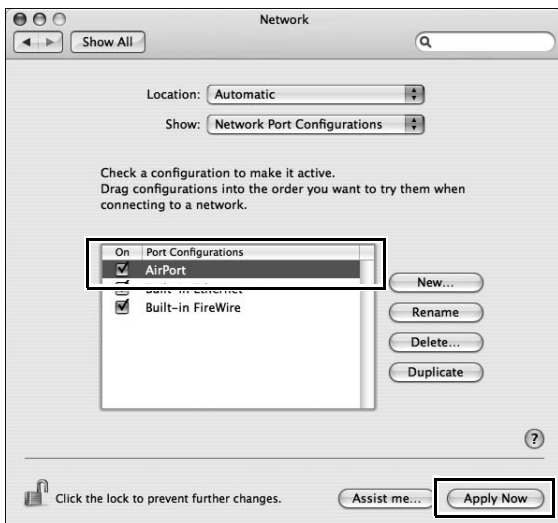
- 1 Open [System Preferences] and click [Network].



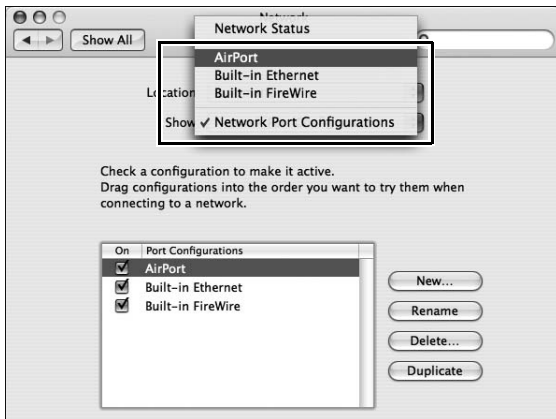
2 Choose [Network Port Configurations] from the [Show] menu.



3 Enable [AirPort], drag it to the top of the list, and click [Apply Now].

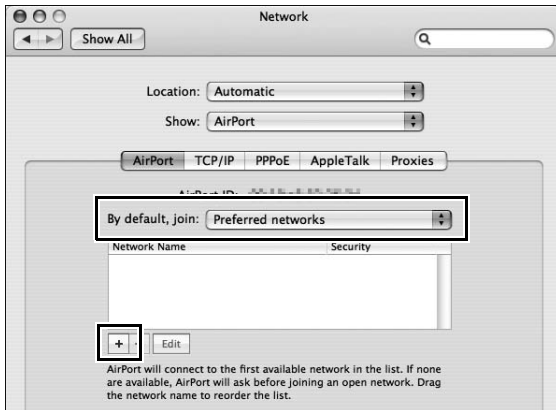


4 Choose [AirPort] from the [Show] menu.



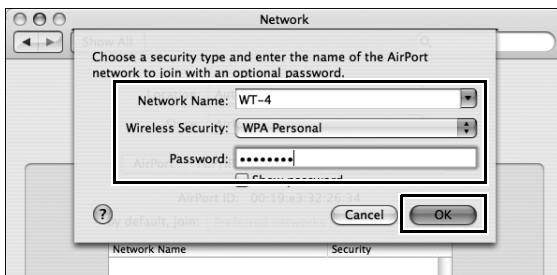
Configuring the Network / Macintosh / Connecting to an Infrastructure

5 Choose [Preferred networks] from the [By default, join] menu and click [+].

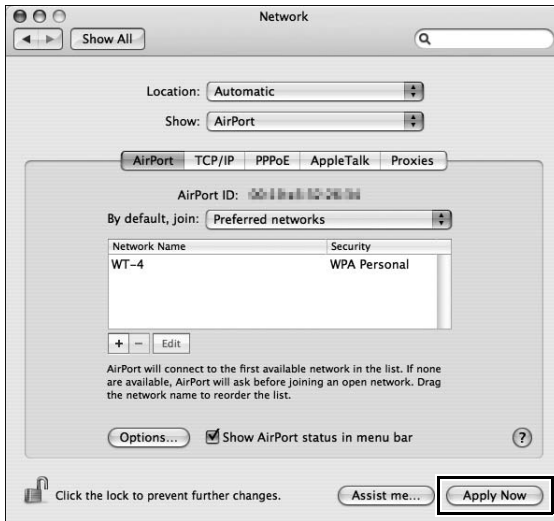


6 Enter the network name and other settings for the wireless access point and click [OK].

- **Network Name:** Enter a name of up to 32 characters.
- **Wireless Security:** Choose from [None], [WEP Password], [WEP 40/128-bit hex], [WEP 40/128-bit ASCII], [WPA Personal], and [WPA2 Personal]. [LEAP], [WPA Enterprise], [WPA2 Enterprise], and [802.1X WEP] can not be used with the WT-4.
- **Password:** If WEP or WPA encryption is enabled, enter a security key. The length of the key depends on the option selected for [Wireless security]:
 - [WEP password]:** Enter a five- or ten-character key.
 - [WEP 40/128 bit (hex)]:** Enter a 10- or 26-digit hexadecimal key. Hexadecimal keys may contain only the numbers 0–9 and the letters a, b, c, d, e, and f.
 - [WEP 40/128 bit (ASCII)]:** Enter a five- or ten-character key.
 - [WPA-Personal], [WPA2-Personal]:** Enter a key of 8 to 63 characters.



7 Click [Apply Now].



Network setup is now complete. Proceed to “Operating the WT-4 for Computer” (pg.47), “Operating the WT-4 for FTP” (pg.107).

Configuring the Network

Operating the WT-4 for Computer

The WT-4 can be operated in one of the following four modes:

Transfer mode: Upload images to a computer.

Thumbnail select mode: Use the supplied software Thumbnail Selector to select and download images while viewing them as thumbnails (reduced images) on your computer.

PC mode: Your camera connected to the WT-4 can be controlled wirelessly from your computer by running the separately sold Camera Control Pro 2 software.

Print mode: Print JPEG images recorded to your camera from a printer connected to a network computer.

Operating procedures in each mode are described below.

1 Copying Network Profiles to the Camera (pg.48).

- Ad Hoc Networks (pg.48)
 - Infrastructure Networks (pg.59)
-



2 Upload pictures.

Upload pictures to a host computer (pp.70–78).

- 1 Connecting the WT-4
- 2 Uploading Images

Thumbnail select mode (pp.79–89).

- 1 Connecting the WT-4
- 2 Downloading Images Using Your Computer

PC Mode (pp.90–96).

- 1 Connecting to the Computer
- 2 Controlling the Camera

Print Mode (pg.97–106).

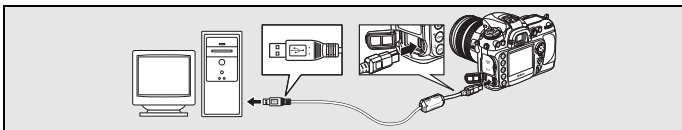
- 1 Copying Network Profiles to the Camera
- 2 Printing Pictures

Copying Network Profiles to the Camera

Ad Hoc Networks

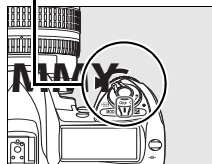
Copying Network Profiles to the Camera / Ad Hoc Networks

- 1 Connect the UC-E4 as shown **below**.



- 2 Turn the camera on.

Power switch



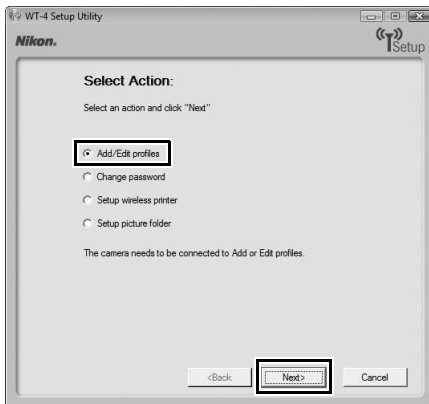
- 3 Turn the computer on and start the WT-4 Setup Utility.

- **Windows:** Double-click the [WT-4 Setup Utility] icon on the desktop
- **Macintosh:** Click the [[WT-4WirelessSetup](#)] icon in the Dock.

4 The dialog shown **below** will be displayed; click [Next].



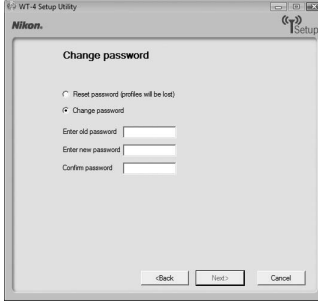

5 Select [**Add/Edit profiles**] and click [**Next**].



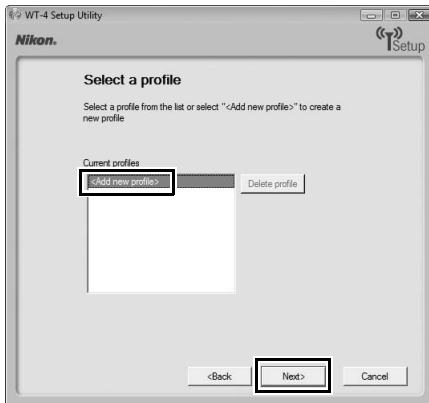
Copying Network Profiles to the Camera / Ad Hoc Networks

The “Select Action” Dialog

The other options in the “Select Action” dialog are described below. Note that the camera need not be connected to a computer to choose a printer or change the upload folder.

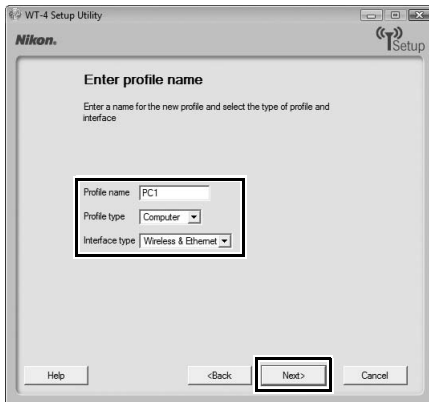
- Change password:** The dialog shown at right will be displayed. By default, no password is required to change device profiles using the WT-4 Setup Utility. A password can be added by selecting Change password. If the camera is later connected to a different computer, a password prompt will be displayed. Once the correct password has been entered, the prompt will not be displayed again. To change an existing password, enter the old password before typing the new password. To remove the password, select Reset password (profiles will be lost) and click Next. Please note that resetting the password deletes all existing device profiles from the camera. Click [Back] to exit without changing password settings.
 
- Setup wireless printer:** By default, the system default printer for the host computer will be used when printing pictures. To choose a different printer, select Setup wireless printer (pg.97).
 
- Setup picture folder:** The dialog shown at right will be displayed. This screen allows you to select the destination folder when downloading images to your computer in transfer mode. Click the [...] button to display a folder list from your computer, then select a destination folder. Changing the destination folder does not require you to connect the camera to your computer. The default destination is the [WT-4] folder in [Pictures] (Windows Vista/Mac OS X) or [My Pictures] (Windows XP).
 - Show it with ViewNX:** When the [Show it with ViewNX] option is toggled on, after connection with WT-4 is terminated, ViewNX will launch and downloaded images are displayed. If ViewNX has not been installed, [Display in ViewNX] cannot be selected.

6 Select [Add new profile] and click [Next].



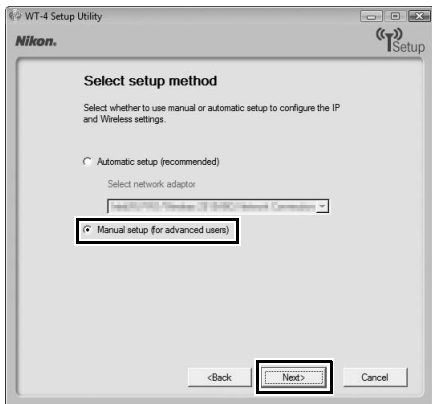
7 Enter the following information and click [Next]:

- **Profile name:** Enter a name of up to 16 characters.
- **Profile type:** Choose [Computer].
- **Interface type:** Choose [Wireless & Ethernet] for networks that include wireless, or [Ethernet only] for Ethernet-only networks.



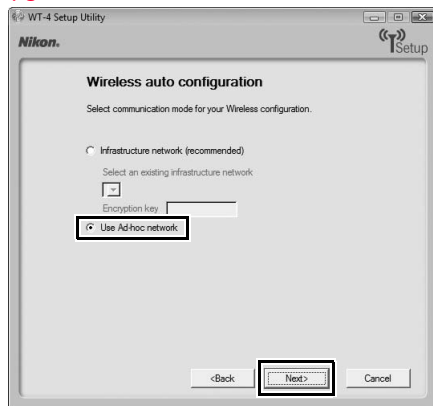
8 Select [Manual setup] and click [Next].

Copying Network Profiles to the Camera / Ad Hoc Networks



"Automatic Setup"

Choose [Automatic setup (recommended)] when using a new network for the first time. The following dialog will be displayed; select [Use Ad-hoc network] and click [Next] to proceed to Step 11 (pg.57).



[Automatic setup] cannot be selected in the following cases:

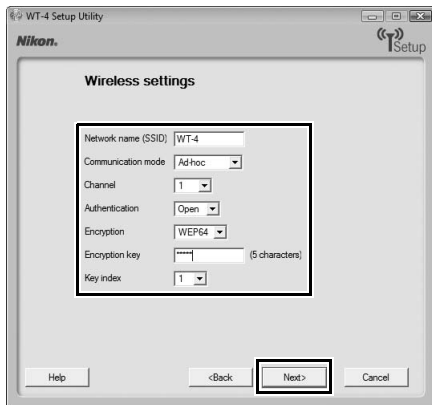
- When editing a preset network
- When using a third party network adapter
- When the computer network is set to a static IP address
- When the OS is Windows XP SP1 or Mac OSX

9 Enter the following information and click [Next].

- **Network name (SSID):** Enter a network name or choose from a list of existing networks. Do not change the name if it is supplied automatically.
- **Network type:** Select [Ad hoc].
- **Channel:** Select a communication channel. However, if the network name (SSID) is consistent, a predetermined channel separate from the channel set here may be applied.
- **Authentication:** Choose the type of authentication used on the network. In ad-hoc mode, the camera supports open system and shared key authentication.
- **Encryption:** The type of encryption used on the network. Choose from [None] (open networks only), 64-bit WEP, and 128-bit WEP.
- **Encryption key:** If the network uses encryption, enter the network key. The number of characters required depends on the type of key used:

	WEP (64-bit)	WEP (128-bit)
Number of characters (ASCII)	5	13
Number of characters (hex)	10	26

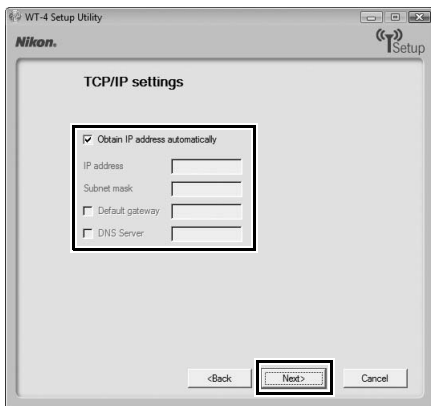
- **Key Index:** Set the key index when [WEP64] or [WEP128] is set for [Encryption]. The default index is [1]. Setting the key index is not necessary when [No encryption] was selected for [Encryption].



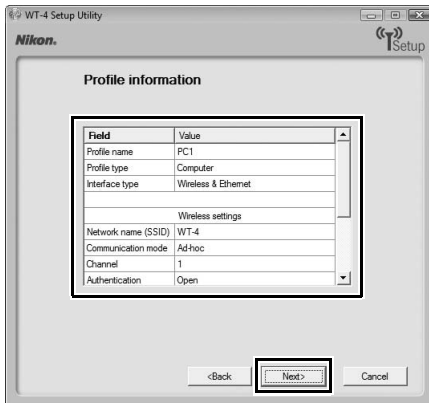
Copying Network Profiles to the Camera / Ad Hoc Networks

10 Select [Obtain IP address automatically] and click [Next].

- **Obtain IP address automatically:** Select this option if the network is configured to supply IP addresses automatically. If the network does not include a DHCP server, addresses will be supplied by Auto IP (pg.180).
- **IP address:** If the network is configured for manual IP addressing, enter an IP address for the WT-4.
- **Subnet mask:** If the network is configured for manual IP addressing, enter a subnet mask for the WT-4.
- **Default gateway:** If the network requires a gateway address, select this option and enter the address supplied by the network administrator. This option applies only if [FTP server] is selected for Profile type in Step 7.
- **DNS server:** If a Domain Name Server exists on the network, select this option and enter the address supplied by the network administrator. This option applies only if [FTP server] is selected for Profile type in Step 7.



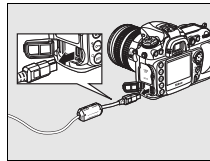
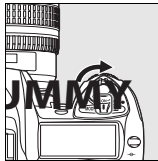
11 Confirm that settings are correct and click [Next].



12 Select [Finish wizard] and click [Next].



- 13** Turn the camera off and disconnect the USB cable.

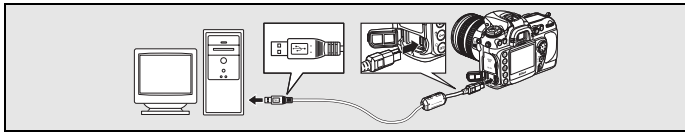


The network profile has now been copied to the camera. Proceed to “Upload pictures to a host computer” (pg.70), “Thumbnail select mode” (pg.79), “PC Mode” (pg.90), “Print Mode” (pg.97).

Copying Network Profiles to the Camera / Ad Hoc Networks

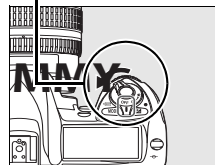
Infrastructure Networks

- 1 Connect the UC-E4 as shown **below**.



- 2 Turn the camera on.

Power switch



- 3 Turn the computer on and start the WT-4 Setup Utility.

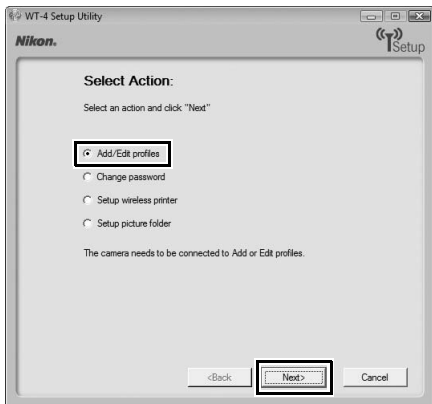
- **Windows:** Double-click the [WT-4 Setup Utility] icon on the desktop
- **Macintosh:** Click the [[WT-4WirelessSetup](#)] icon in the Dock.

- 4 The dialog shown **below** will be displayed; click [Next].







5 Select [Add/Edit profiles] and click [Next].

Copying Network Profiles to the Camera / Infrastructure Networks

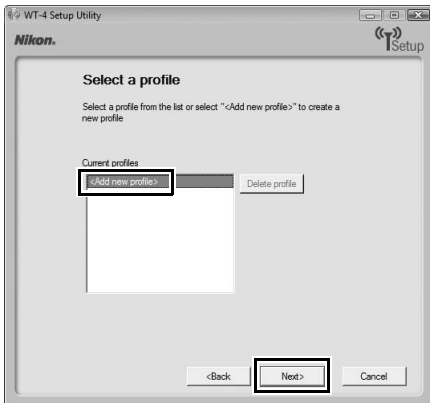


The “Select Action” Dialog

The other options in the “Select Action” dialog are described below. Note that the camera need not be connected to a computer to choose a printer or change the upload folder.

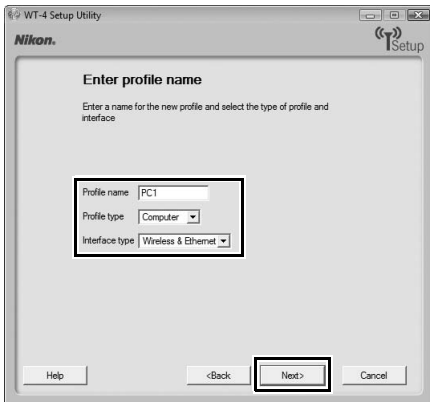
- Change password:** The dialog shown at right will be displayed. By default, no password is required to change device profiles using the WT-4 Setup Utility. A password can be added by selecting Change password. If the camera is later connected to a different computer, a password prompt will be displayed. Once the correct password has been entered, the prompt will not be displayed again. To change an existing password, enter the old password before typing the new password. To remove the password, select Reset password (profiles will be lost) and click Next. Please note that resetting the password deletes all existing device profiles from the camera. Click [Back] to exit without changing password settings.
 
- Setup wireless printer:** By default, the system default printer for the host computer will be used when printing pictures. To choose a different printer, select Setup wireless printer (pg.97).
 
- Setup picture folder:** The dialog shown at right will be displayed. This screen allows you to select the destination folder when downloading images to your computer in transfer mode. Click the [...] button to display a folder list from your computer, then select a destination folder. Changing the destination folder does not require you to connect the camera to your computer. The default destination is the [WT-4] folder in [Pictures] (Windows Vista/Mac OS X) or [My Pictures] (Windows XP).
 
- Show it with ViewNX:** When the [Show it with ViewNX] option is toggled on, after connection with WT-4 is terminated, ViewNX will launch and downloaded images are displayed. If ViewNX has not been installed, [Display in ViewNX] cannot be selected.
 

6 Select [Add new profile] and click [Next].

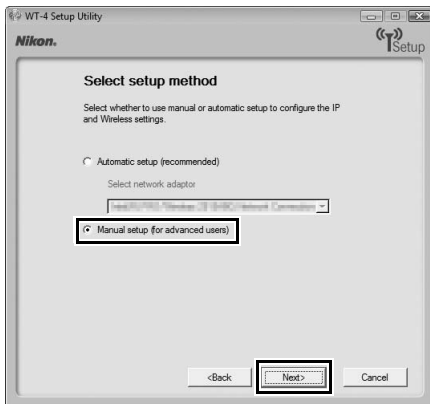


7 Enter the following information and click [Next]:

- **Profile name:** Enter a name of up to 16 characters.
- **Profile type:** Choose [Computer].
- **Interface type:** Choose [Wireless & Ethernet] for networks that include wireless, or [Ethernet only] for Ethernet-only networks.



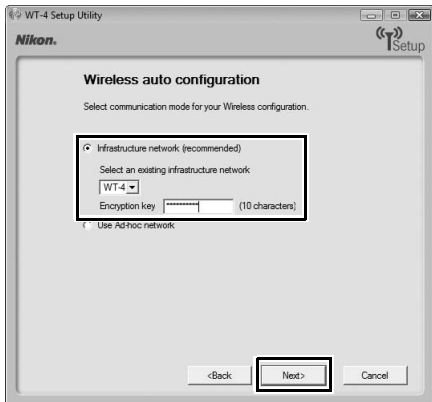
8 Select [Manual setup] and click [Next].



Copying Network Profiles to the Camera / Infrastructure Networks

"Automatic Setup"

Choose [Automatic setup (recommended)] when using a new network for the first time. The following dialog will be displayed; if multiple infrastructure networks have been setup, select a setting which will be used for network connection and click [Next]. to proceed to Step 11 (pg.68).



[Automatic setup] cannot be selected in the following cases:

- When editing a preset network
- When using a third party network adapter
- When the computer network is set to a static IP address
- When the OS is Windows XP SP1 or Mac OSX