

APPENDIX 3: Photographs of test setup

Conducted Emission

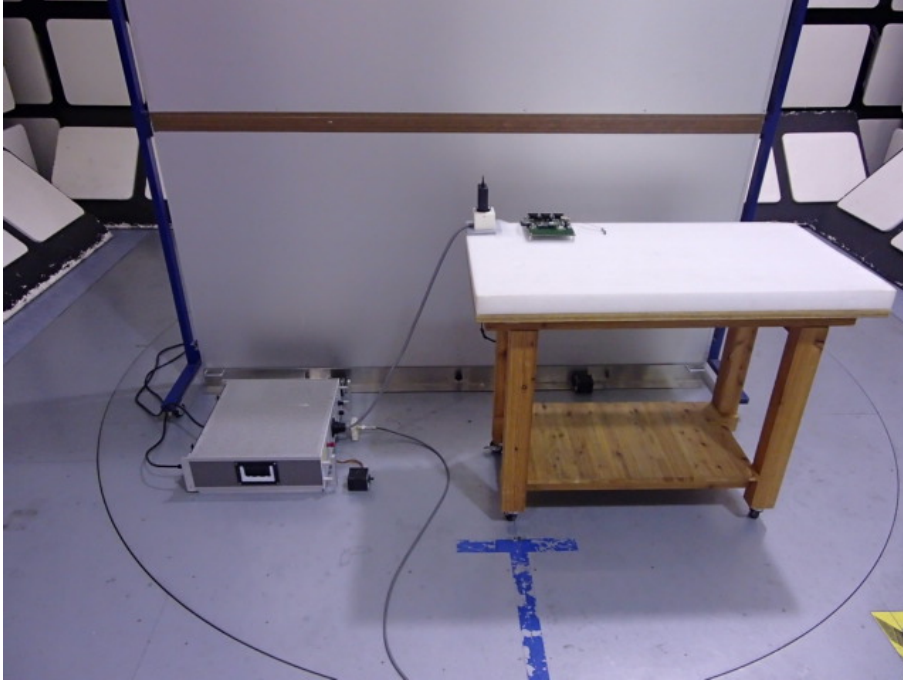


Photo 1



Photo 2

UL Japan, Inc.

Ise EMC Lab.

4383-326 Asama-cho, Ise-shi, Mie-ken 516-0021 JAPAN

Telephone : +81 596 24 8999

Facsimile : +81 596 24 8124

Radiated Spurious Emission
(Antenna 1)
WLAN

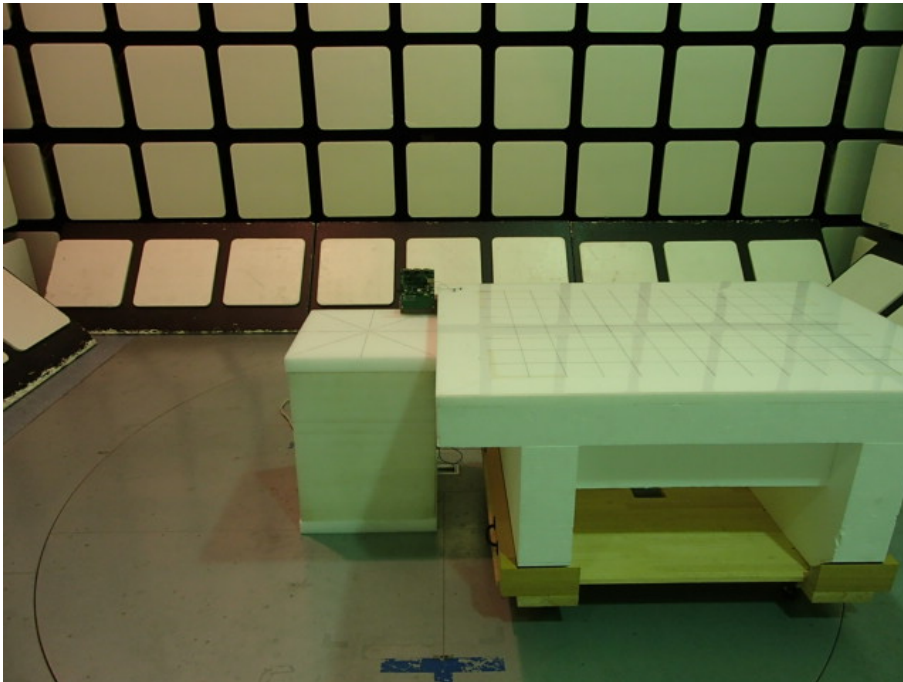


Photo 1

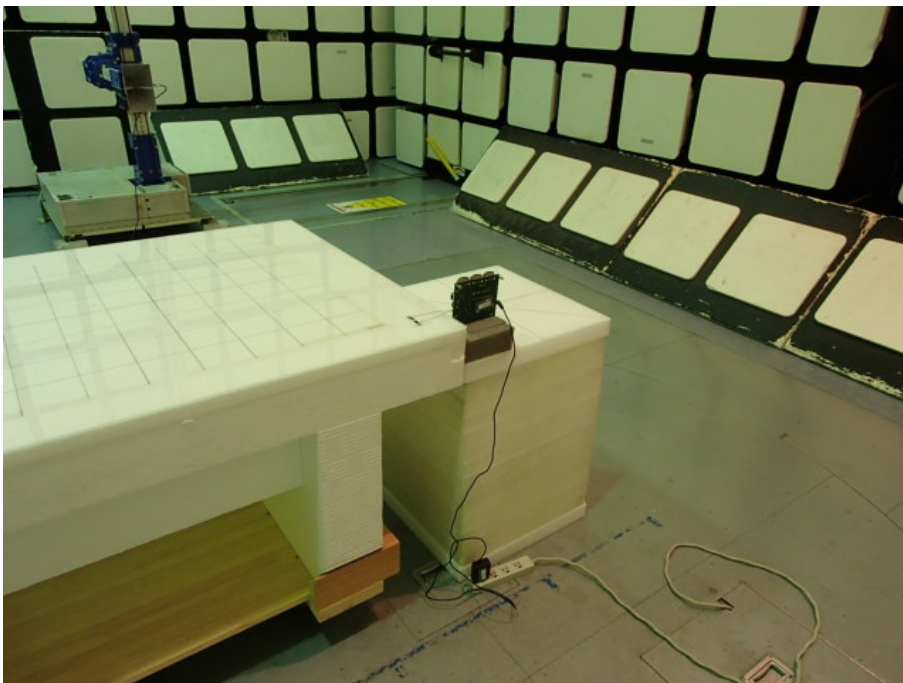


Photo 2

UL Japan, Inc.

Ise EMC Lab.

4383-326 Asama-cho, Ise-shi, Mie-ken 516-0021 JAPAN

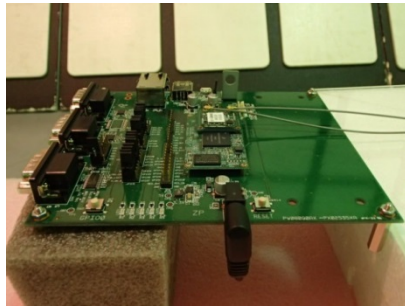
Telephone : +81 596 24 8999

Facsimile : +81 596 24 8124

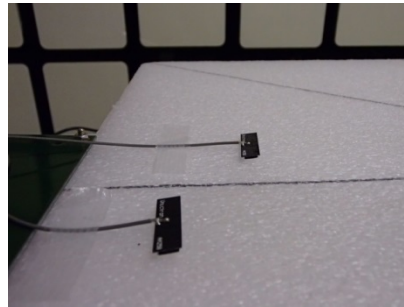
Worst Case Position
(Module and Antenna 1)
WLAN

Above 1GHz (Horizontal: Module Z / Ant X-axis/ Vertical: Module Z / Ant Y-axis)
Below 1GHz (Horizontal: Module Y / Ant X-axis/ Vertical: Module Y / Ant X-axis)

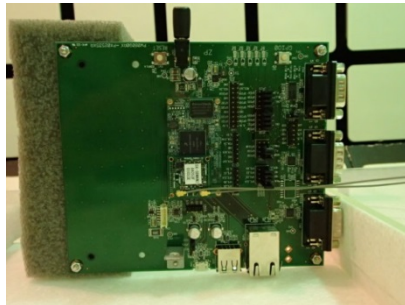
Module
X-axis



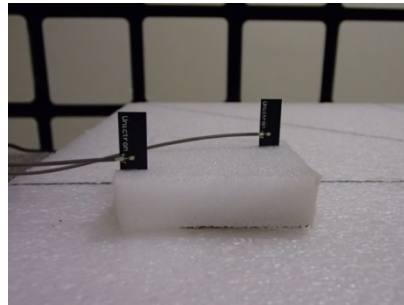
Antenna 1
X-axis



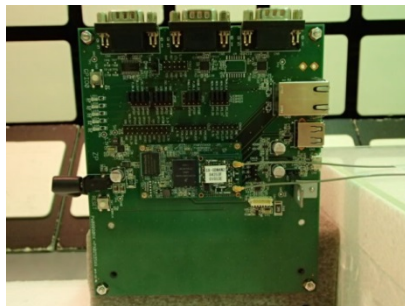
Y-axis



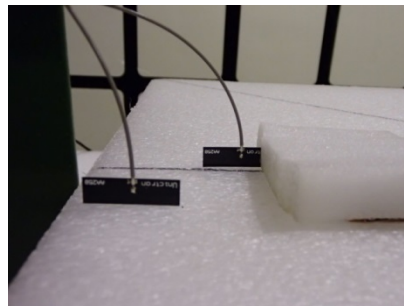
Y-axis



Z-axis



Z-axis



Radiated Spurious Emission
(Antenna 1)
BT LE



Photo 1

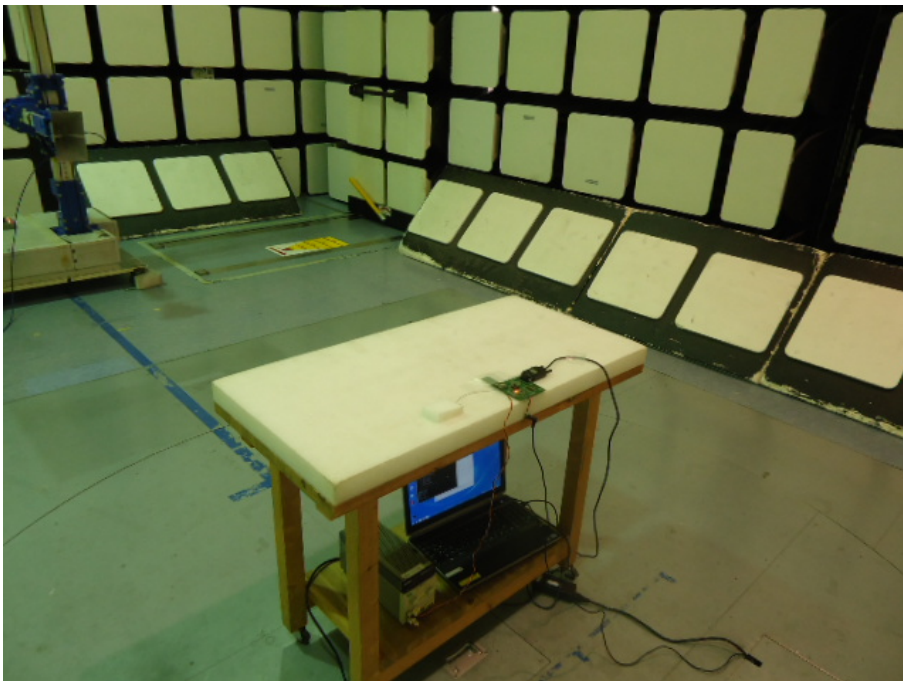


Photo 2

UL Japan, Inc.

Ise EMC Lab.

4383-326 Asama-cho, Ise-shi, Mie-ken 516-0021 JAPAN

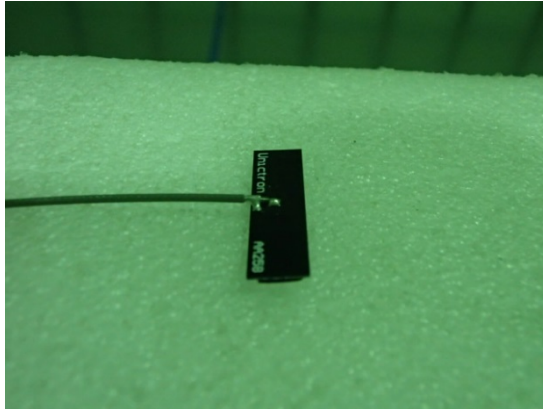
Telephone : +81 596 24 8999

Facsimile : +81 596 24 8124

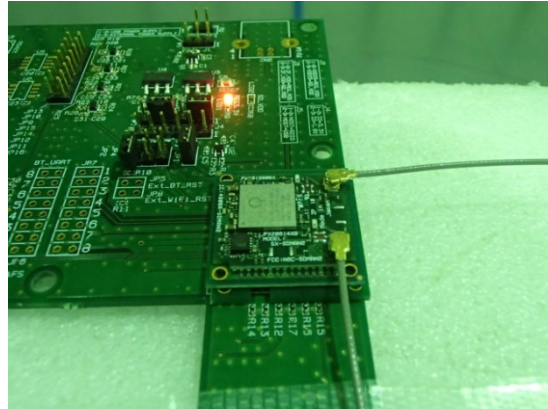
Worst Case Position
(Module and Antenna 1)
BT LE

Above 1GHz (Horizontal: Module X / Ant Z-axis/ Vertical: Module X / Ant Y-axis)
Below 1GHz (Horizontal: Module X / Ant X-axis/ Vertical: Module X / Ant X-axis)

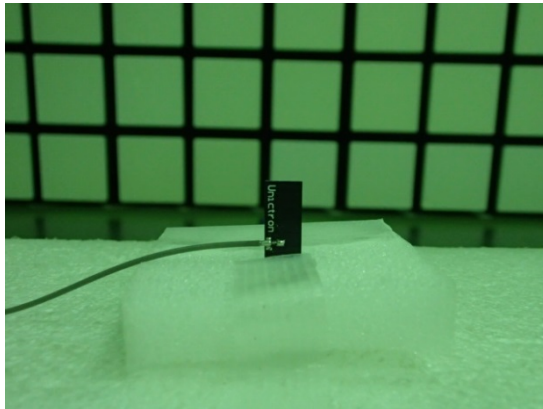
X-axis



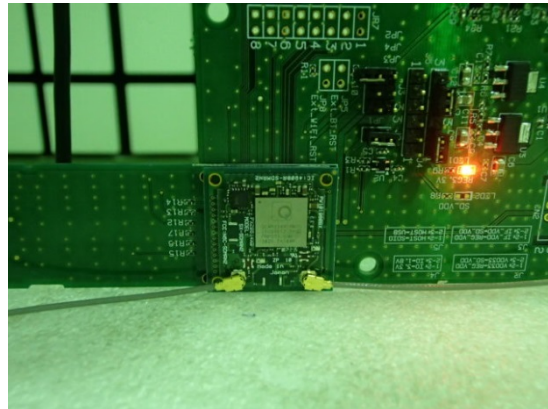
X-axis



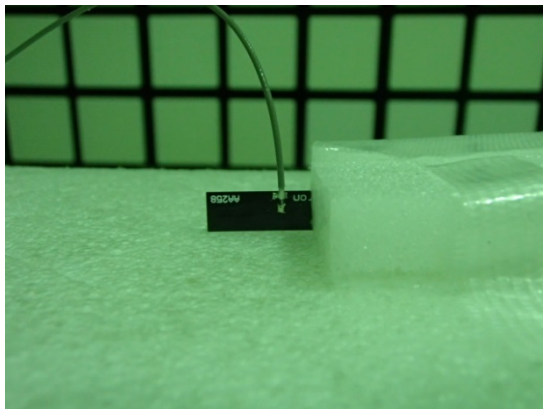
Y-axis



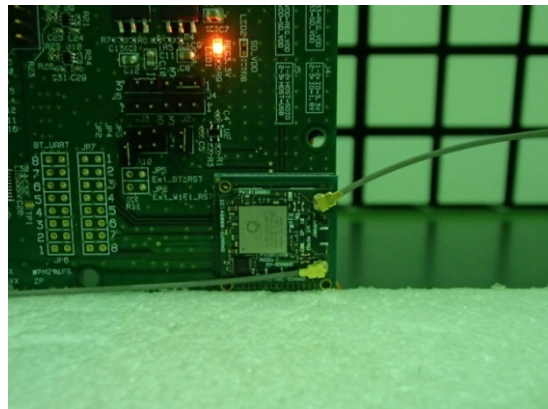
Y-axis



Z-axis



Z-axis



Radiated Spurious Emission
(Antenna 2)
WLAN (Below 1GHz)



Photo 1

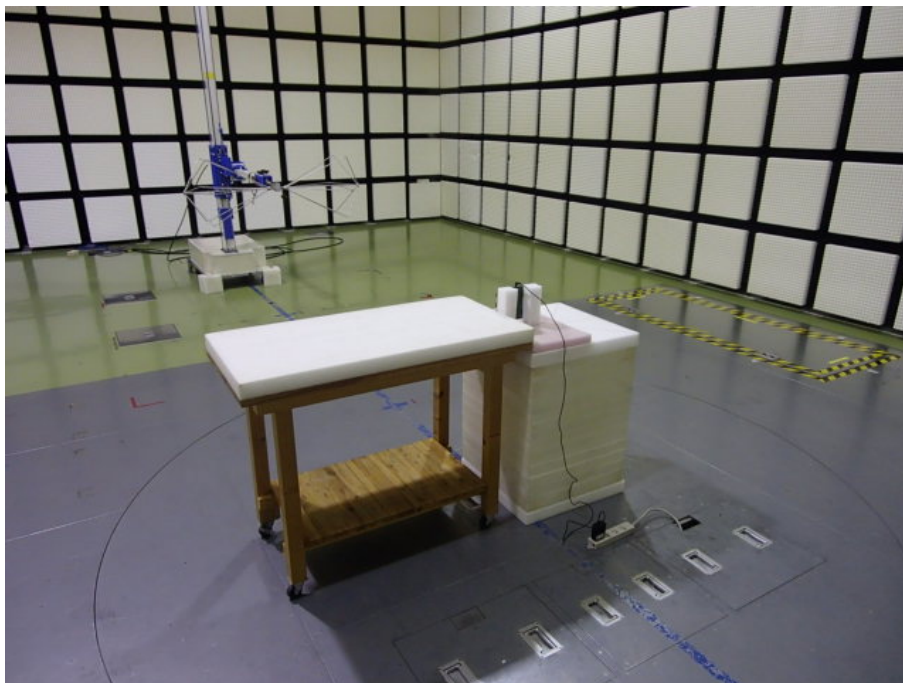


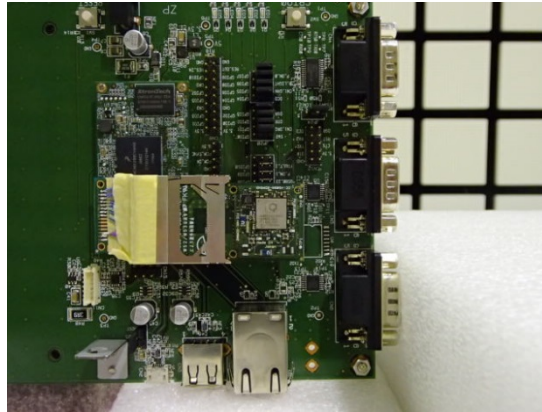
Photo 2

Worst Case Position
(Antenna 2)
WLAN (Below 1GHz)
(Horizontal: Y-axis / Vertical: Z-axis)

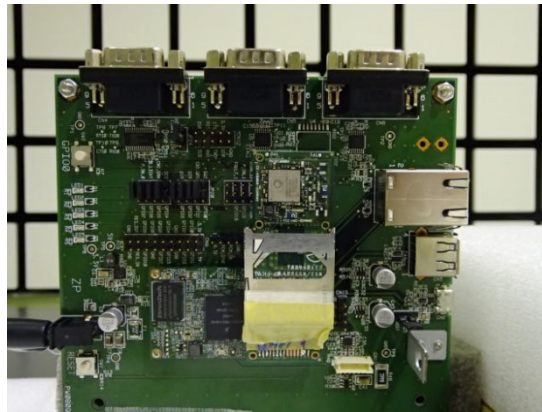
X-axis



Y-axis



Z-axis



Radiated Spurious Emission
(Antenna 2)
WLAN (Above 1GHz)



Photo 1

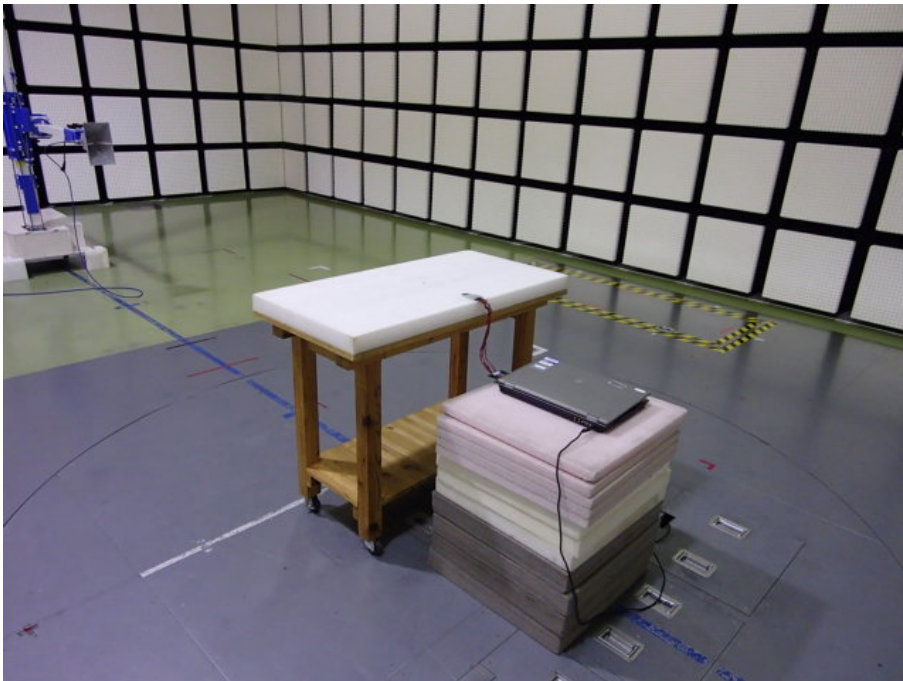


Photo 2

UL Japan, Inc.

Ise EMC Lab.

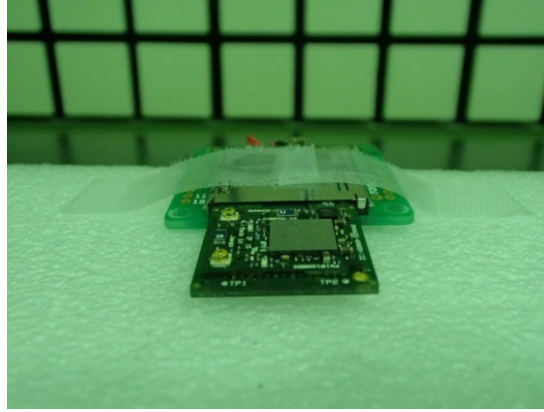
4383-326 Asama-cho, Ise-shi, Mie-ken 516-0021 JAPAN

Telephone : +81 596 24 8999

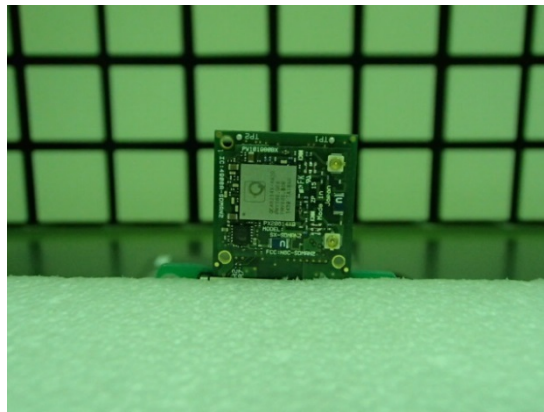
Facsimile : +81 596 24 8124

Worst Case Position
(Antenna 2)
WLAN (Above 1GHz)
(Horizontal: X-axis / Vertical: Z-axis)

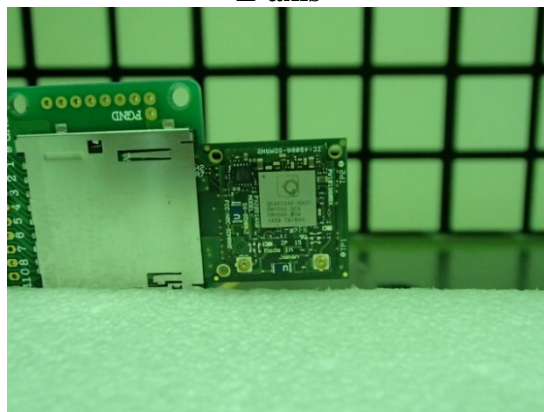
X-axis



Y-axis



Z-axis



Radiated Spurious Emission
(Antenna 2)
BT LE



Photo 1

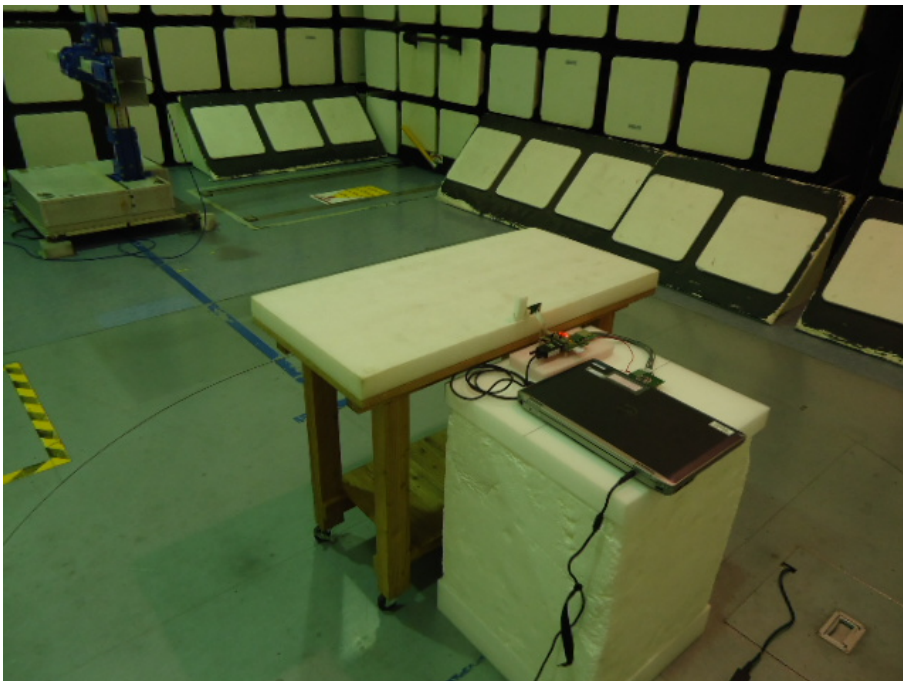


Photo 2

UL Japan, Inc.

Ise EMC Lab.

4383-326 Asama-cho, Ise-shi, Mie-ken 516-0021 JAPAN

Telephone : +81 596 24 8999

Facsimile : +81 596 24 8124

Worst Case Position
(Antenna 2)

BT LE

Above 1GHz (Horizontal: Z-axis / Vertical: Y-axis)

Below 1GHz (Horizontal: Z-axis / Vertical: Z-axis)

X-axis



Y-axis



Z-axis



End of Report