

ALL NEW FOR DIGITAL  
**tuny 9**



User's Manual

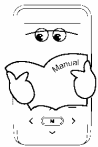
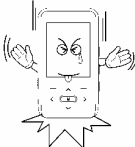
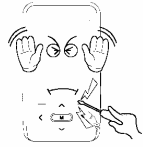

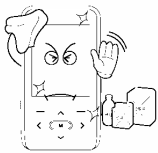

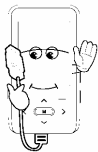
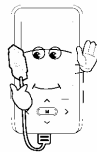
## Table of Contents

Before using product.....	5
Accessories.....	6
PC System Requirement.....	7
Features .....	8
Location of Controls .....	9
Terms .....	11
Power On / Off / Hold.....	12
Battery .....	13
Safety Precaution for Battery.....	14
Connection with PC.....	15
Checking of Connection.....	17
Save and Delete the media file (with MSC).....	18
Media file Synchronize (MTP).....	19
Format .....	21
Disconnection (below Win 2000).....	22
Firmware / Font Update .....	23
Modes.....	25
Select MTP/MSC.....	26
Navigation Mode .....	26
Playing Music Files .....	27
Pause .....	27
Volume adjustment .....	27
Move Previous or Next Song .....	28
Fast Forward / Fast Rewind.....	28
Section Repeat.....	28
Changing playback order.....	28
Listening to Radio.....	29
Manual Preset .....	29
Volume Adjustment.....	29
Manual Preset and Preset Mode change .....	30
Saving FM Channels.....	30
Delete Preset.....	30
Auto Preset .....	31
Using Preset.....	31
Select Stereo/Mono.....	31
FM Recording .....	31

Viewing Text .....	32
Display Moving .....	38
Playback Moving Picture .....	33
Pause.....	33
Volume Adjustment.....	33
Move Previous / Next Moving Picture.....	34
Fast forward / Fast Rewind.....	34
Section Repeat.....	34
Changing playback order.....	34
Viewing Image.....	37
Viewing previous / next image .....	37
Recording .....	35
Pause.....	35
Type of Recording.....	36
Using Browse.....	37
Add the Favorite .....	40
Delete the Favorite.....	40
Connection of USB Host.....	41
Copy of USB Host file.....	42
Using Bluetooth.....	43
Connection with TV .....	45
Menu Setting .....	47
General Setting .....	48
Display Setting .....	48
Timer Setting.....	48
Mode Setting .....	49
Sound Setting .....	49
Record Setting.....	49
Bluetooth Setting.....	49
Television Setting.....	50
System Setting.....	50
Using Transcoder.....	51
FAQ .....	53
Specification .....	55
Important Notice.....	57
Before proceeding with After Sales Service. ....	57
Customer support .....	57

## Before using product

Carefully read this part before using the product. The manufacturer is not responsible for any damage or loss from being not in conformity with these precautions.

<p>Pay attention not to get wet with water or chemicals. In that case, contact our A/S agent for repair.</p> 	<p>Never use any chemical or cleanser. It may damage the surface of product.</p> 	<p>Avoid humidity, dusty area and magnetic body.</p> 
<p>Pay attention not to get wet with water or chemicals. In that case, contact our A/S agent for repair.</p> 	<p>Never use any chemical or Cleanser. It may damage the surface of product.</p> 	<p>Avoid humidity, dusty area and magnetic body.</p> 
<p>Please plug in and out the cable by grasping the plug connector. This may cause a break in the wire.</p> 	<p>Don't make shock or a shake while the USB is connected to the PC.</p> 	

## Accessories



Tuny9



Earphone



USB Host Cable



Audio Cable



USB Cable



Necklace



User's manual



Installation CD

- Real formatted memory space may be less than memory size marked due to firmware.
- When accessories are damaged, they can be purchased individually.
- The exterior or dimensions are subject to change without prior notice to the customer in order to improve the product quality.

## PC System Requirement

### Minimum PC System

- CPU : Pentium 500 MHz or more
- OS : Windows 98 se, Windows Me, Windows 2000, Windows XP
- VGA : SVGA color monitor or more
- RAM : 128MB or more recommended
- HDD : More than 30MB Space in hard disk
- CD-ROM Driver
- USB port

### System requirement for Transcoder

- CPU : Pentium4 1GHz or more
- OS : Windows 2000, Windows XP
- Windows Media Player 9.0
- DirectX 9.0
- Codec pack

### System requirement for MTP

- OS : Windows XP SP2
- Windows Media Player 10

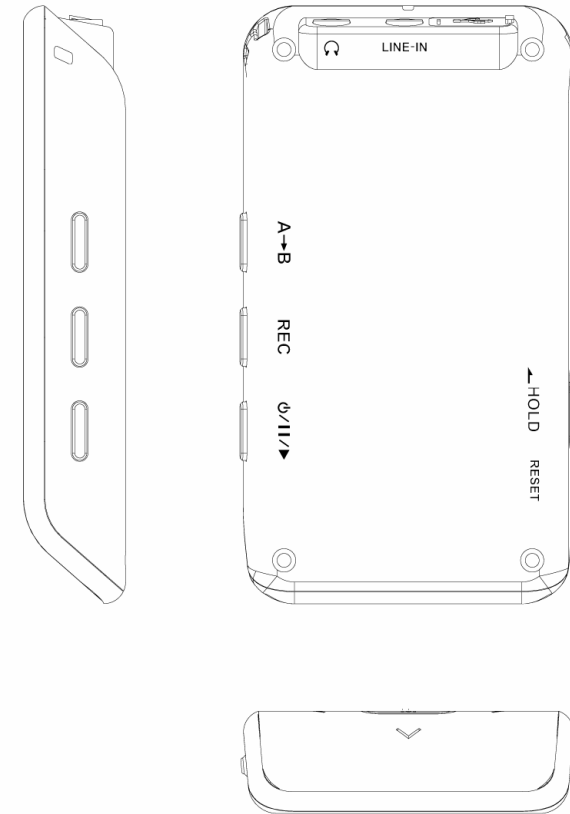
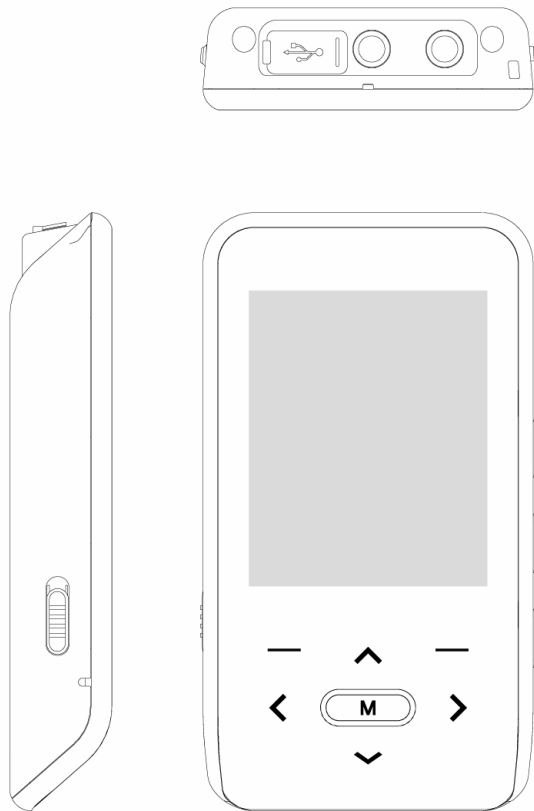
### System requirement for USB 2.0

- Windows 2000 SP4
- Windows XP SP2
- USB 2.0
- Hub for USB 2.0

## Features

- 45 x 82 x 14 mm slim and super light weight with a superior quality of the appearance adapted by new design concept.
- 2.0" TFT COLOR LCD (26K color, 176 x 220 Pixel) is provided for a better user experience.
- Support the MP3, OGG and WMA.
- Support the Janus/PD DRM.
- Playing Motion Picture.
- View the JPEG images.
- Support a USB 2.0 interface to maximize the portable data storage feature.
- Function as a mass storage device as a removable disk.
- Multi Repeat functions for language study.
- Line-in Recording as MP3 File
- Voice recording function via external microphone.
- Max recording 24 (512MB, 32Kbps/16KHz Sampling)
- FM Radio listening and Recording function.
- 30 presets will be automatically searched and saved.
- Provide the basic information of titles, artists and albums of music files through ID3 Tags.
- Support the 15 languages including Korean, English, Chinese, Japanese and so no.
- 5 Preset (Normal/Pop/Rock/Jazz/Classic) and 5 user Equalizers.
- Resume playing music in the stopped point.
- Show time and date with the built-in RTC(Real Time Clock)
- It can be played 18 hours via built-in Lithium Polymer Battery after approximately 3 hours recharging. Built-in 512MB 1GB, 2GB flash memory.
- Support the MTP and MSC protocol.
- Support the Strero Bluetooth.
- Support the TV out function.
- Support the SRS, Trubass, Focus and WOW.
- It can be create the subfolders up to 512.
- It can be lined up each section on navigation mode.
- Support the Mac OS (below 9.2 version)
- Firmware upgragable.
- Display the 3 line lyric by Winamp program.

## Location of Controls



## Terms

### MTP (Media Transfer Protocol)

MTP is a new protocol and accompanying set of drivers developed by Microsoft to connect portable devices to a Windows XP PC and synchronize digital media content between those devices and the PC. MTP is geared toward portable devices with hard drives. In general, users will have to buy new devices that support MTP, although some existing devices will be upgradeable.

### MSC (Mass Storage Class)

Flash based devices will continue to use Mass Storage Class (MSC), a broadly supported protocol whose drivers are already included with Windows XP, 2000, and Me.

### MP3 (MPEG-1 Audio Layer 3)

MP3 is the shortened word of MPEG-1 Audio Layer 3 and audio data compression technology. Usually, it means MP3 file type music data. The MP3 file is compressed to the size of 1/10 of normal CD file and sounded like CD.

### WMA (Windows Media Audio)

A popular alternative to MP3, Microsoft's WMA (Windows Media Audio) format can compress files into even smaller sizes while retaining audio quality. A general compression rate of 1/24 in relation to CD-DA (Compact Disc Digital Audio) files.

### OGG (Ogg Vorbis)

Ogg vorbis file can be made by music CD as MP3 and playback by WinAmp or other MP3 playback program, OGG file has better sound quality comparing to MP3 file, but the size is smaller to 38% comparing to MP3 file.

### XVID

XviD is an MPEG-4 compatible codec, which produces very good video quality – something that really competes with DivX. It's an open source project, which is developed and maintained by a handful of skilled and interested engineers from all over the world.


### JPEG (Joint Photographic Experts Group)

Stands for Joint Photographic Experts Group. It is widely used on the Internet for the display of photographs.

## Power On / Off / Hold

### Power On




Press  to turn on the power 1 sec or so.



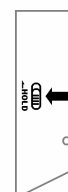
### Power Off



Press  to turn off the power 3 sec or so.




### HOLD On/Off



Place to HOLD to hold functions. Press the button once again to release it.



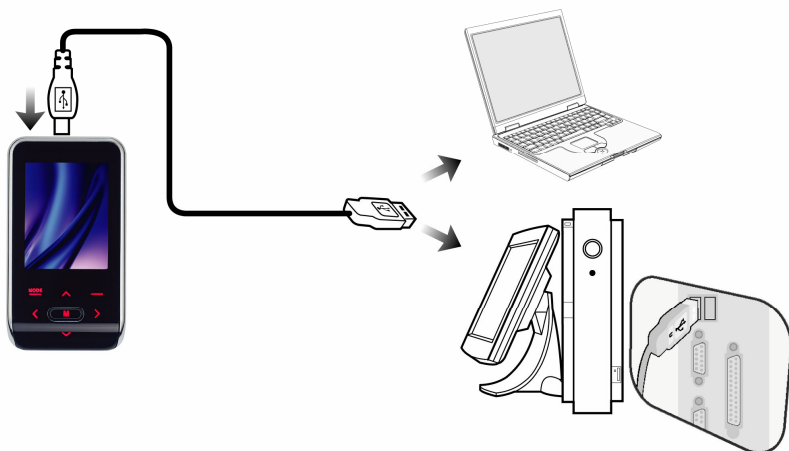
### Notice

- Press the Reset () button to restart when coming to sudden stop.
- Reset button is located on the left side under HOLD key in a small hole.
- For safety, close the program before power off.

## Battery

### Battery Recharge

Connect the unit into PC with USB cable supplied in the package to charge. (Recharge is in process while connecting unit into PC and LCD will show the picture on the right when completion of recharge.)



## Safety Precaution for Battery

This unit has a built-in Lithium Polymer Battery (680 mA, 3.7 V). Carefully read this part before using the product.

- Put and charge in an isolated area, away from other flammable materials.
- Do not turn on the power when drowning.
- Do not destroy by fire.
- It must be sufficiently charged before using for the first time or after a long time period of storage.
- Unlike Nickel-cadmium or Nickel-hydrogen battery, Lithium Polymer Battery has no memory effect.
- Charge the battery as often as you can to extend the durability of battery.
- The battery life will be cutting down if you don't charge frequently because a liquid with in battery become dry and hard

### Memory effect is?

The term "memory" basically is described as the battery "remembers" its usual discharge point and superficially "needs" a charge whenever it hits that point. In other words, if you have a Nickel-cadmium that always gets discharged to only 50% of its capacity, it will eventually not run below that 50% mark if you ever wanted to discharge it to a lower point.

### Low Battery

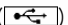
It will be power off automatically after "Low Battery" appears on LCD on the right if you use continuously.

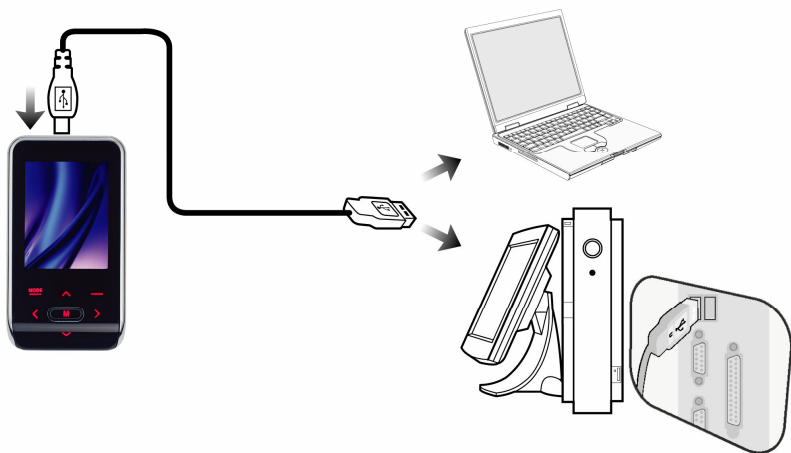


### Notice

- It takes approximately 3 hours to completely recharge fully consumed battery.
- Recharge the battery as soon as "Low Battery" appears on LCD

## Connection with PC

Connect one end of the cable into a USB port and the other end to the USB port (  ) of the unit.



## Windows Me, 2000, XP

The product will be automatically identified as mass storage driver when connecting product into PC.



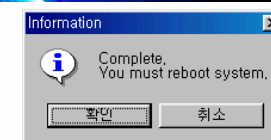
## Windows 98 SE

The product can not be identified in the PC with Windows 98SE or lower. Install program CD supplied with product in the PC. Please set up the driver as following procedure.

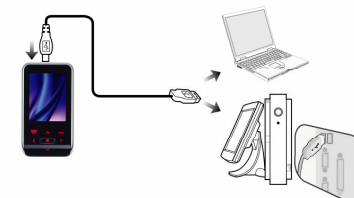
1. Select the driver install when installation screen appears on after inserting the CD (including Win98 driver) supplied with product.



2. Start the rebooting after appearing on "Complete"



3. Connecting the product into the PC via USB Cable after rebooting.



4. The product will be automatically searched. Then driver installation will be completed.

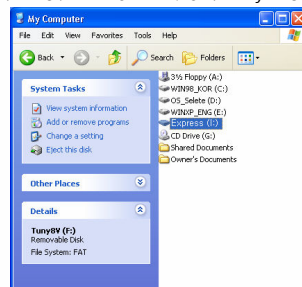


5. If set up window appear on, select the "Next" to install the driver.

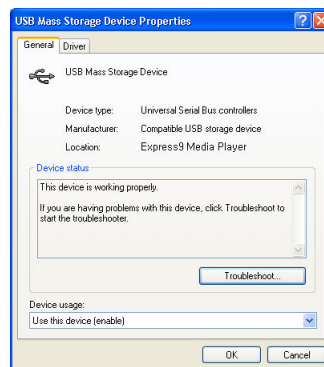
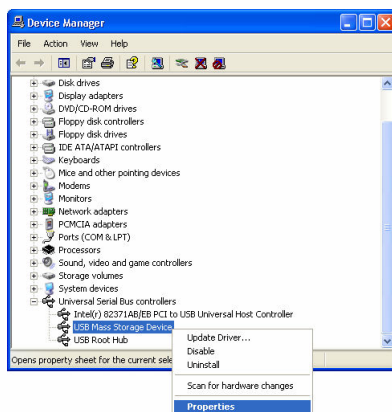


## Checking of Connection

PC identifies the product as a removable disk under “My Computer” the name of “Express”

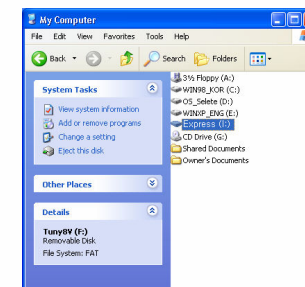


It can also check the connection through a controller as follows.

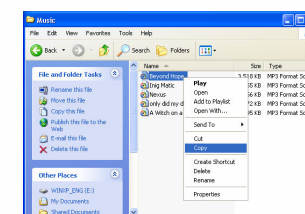


## Save and Delete the media file (with MSC)

Please find the Express drive(removable disk) from the file viewer. The name of drive varies according to computer.

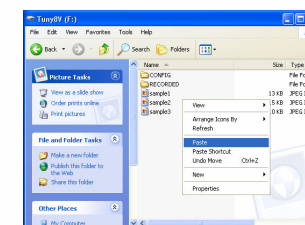


Select the file to be copied. click the right button on mouse and select the “copy.”  
(Shortening Key : Ctrl + C)



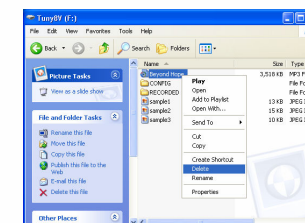
Go into the folder in Express drive where you want and click the right button on mouse. Then select the “attachment”.

(Shortening Key : Ctrl + V)



Select the file to be deleted. Then click the right button on mouse and select the “delete”

(Shortening key: Delete)



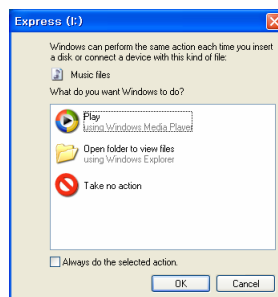
※ For more information, press the F1 key in the Windows Search.

## Media file Synchronize (MTP)

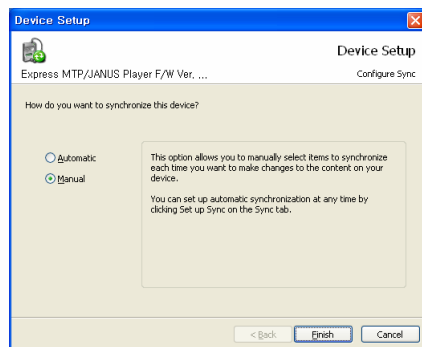
### MTP requirements

- Windows XP SP2
- Windows Media Player (Ver. 10).

1. The pop up window will be appeared when connecting the product into the PC. Select “Window Media Player” and then player will be automatically started.

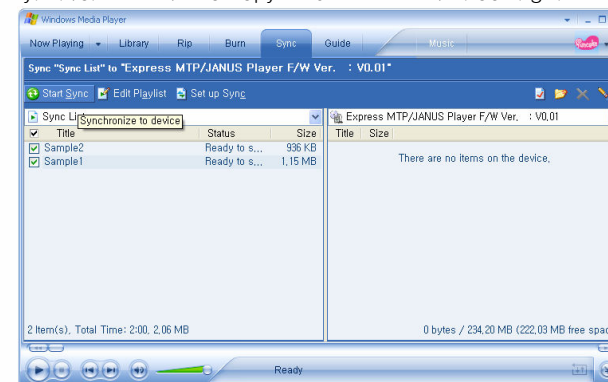


2. The pop up window shows will be appeared after Media Player performed. By this time Click on “Auto or Manual” following the selection. Click on “Synchronize” if pop up window could not come out.

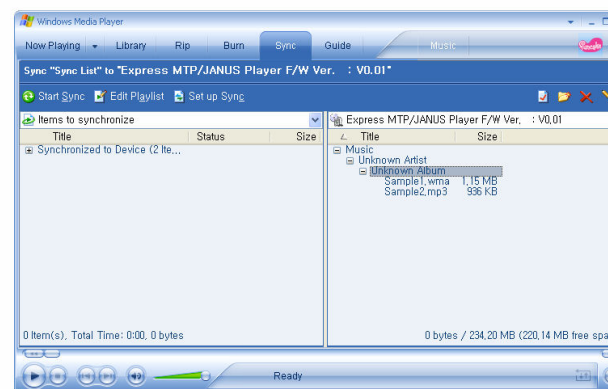


3. If select the “Auto”, Media files will be automatically scanned and then added the lists. If select the “Manual”, look up Media files in the directory or folder in person. It is recommended that select the “Manual” and search for Media files personally.

4. Click on “Synchronize Start” to copy Media files after choosing the files.



5. It will be automatically lined up in alphabetical order according to Artist, Album and so on after Synchronizing.



6. The files which was Synchronized via MTP cannot copy or transfer. It available to elimination only.

※ For more information, press the F1 key in the Windows Media Player.

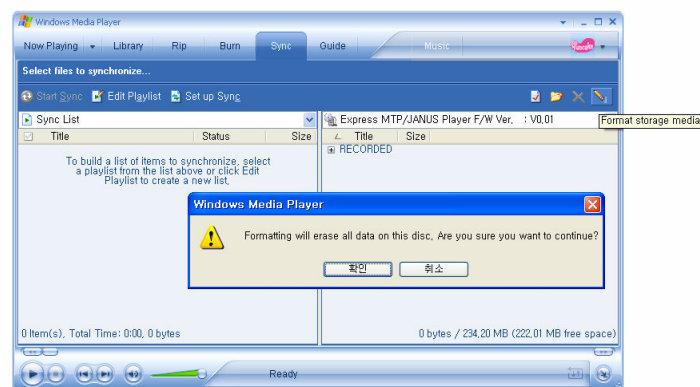
## Format

All the files saved in the player will be deleted during formatting. You must backup the data before formatting. There are three ways to format.

### General format (MSC, MTP)

Find the removable disk in My Computer and click the right button on the mouse. Then select the format. Make sure it should be selected only FAT16 or FAT32.

### Format with Media Player (only MTP)



### Format with Player

Select the Menu – System – Format by pressing **[M]** button.

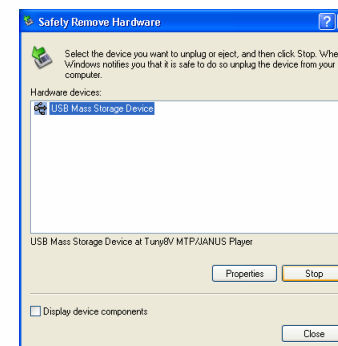
## Disconnection (below Win 2000)

In case of MSC, removing the cable without following instruction may cause the fatal error in PC or the product.

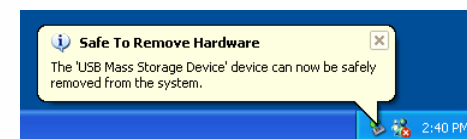
1. Double click on the green arrow on the right-bottom part of initial Window screen like a below picture.



2. Click on Stop and OK after selecting "USB Mass Storage Device"
3. Select the "Tuny9 ... Device" and Click on Stop.



4. Click on OK on "Safety removal of the hardware" message bar followed by cable removal.



Check the hidden icon if Icon does not appear on the right-bottom part of initial Window screen.

## Firmware / Font Update

### Updated File Download

Download the updated files through our website (<http://www.dynetel.com> – Support – Download). It provide with compressed files. After downloading, extract the files and check both TUNY9IMA.TBL, TUNY9MSG.TBL, TUNY9FNT.TCC and TUNY9.ROM.

### How to Update

1. Connecting the product into the PC by USB Cable.
2. Copy the downloaded files.
3. Go into the removable disk.
4. Attach the files.
  - A. In case of MTP, copy the files into 'Data' folder.
  - B. In case of MSC, copy the files into the upper folder.
5. Detach the cable from the PC. (Power is automatically off.)
6. Turn on the product power.
7. The product should automatically upgrade the firmware.  
(Supposedly after upgrading it automatically powered off.)

### Note

- ✓ Fully recharge the product before updatoing.
- ✓ Back-up the files before updating.
- ✓ Format the player after updating and set up the Default set before using.

## Modes

This unit is consisted of 6 modes. Mode will go through Music, Radio, Multimedia, Picture, Browse and Setting. For instance, playing music file is only in Music mode. Also it needs to change to Multimedia mode to play the movie. To change mode, press the **[M]** button long and select the mode by using the **[M]** button.



Music



Radio



Record



Picture



Text

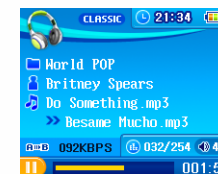


Movie

## Select MTP/MSC



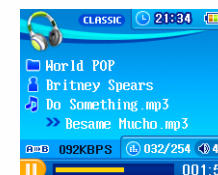
1. Press the **[M]** button to select the MTP or MSC.



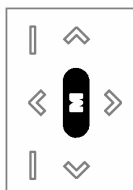
## Navigation Mode



1. Press the **[M]** button each mode (except for Radio mode) to move the navigation mode.



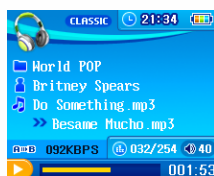
## Playing Music Files



1. Press the **M** button long to move the conversion screen then select the Music mode and press the **M** button again.



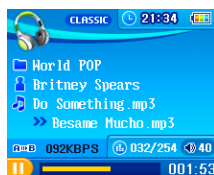
2. Press the **PLAY/PAUSE** button to play after appearing the Music mode screen.



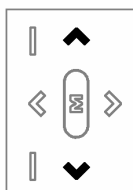
## Pause



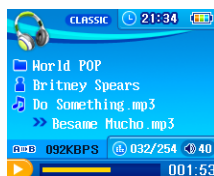
1. Press the **PLAY/PAUSE** button to pause the music while listening. Press the button again to play.



## Volume adjustment



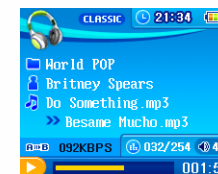
1. Volume can be adjusted from 0 to 40 by the **UP/DOWN** button.



## Move Previous or Next Song



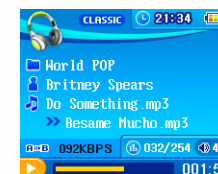
1. Press the **PREVIOUS/NEXT** button to move previous or next song while in playback. Press the **PREVIOUS** button to go into the head of the song when song playing exceeded the time of 10 sec.



## Fast Forward / Fast Rewind



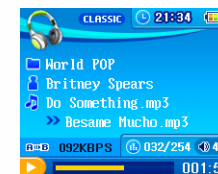
1. Press the **FAST FORWARD/FAST REWIND** button shortly to move previous or move next song while in playback.



## Section Repeat



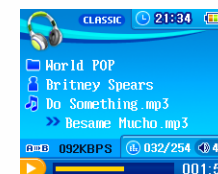
1. Section Repeat function can make available to listen to section of the file repeatedly. Press the **A->B** button to display A-> on the LCD.  
2. Press the **A->B** button again to display A->B on the LCD. Then the section will be repeated.  
3. Press the **A->B** button to stop the section repeat.



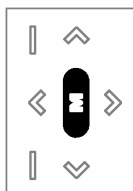
## Changing playback order



1. Press the **MODE** button shortly to change the playback mode while in playback/pause.



## Listening to Radio



1. Press the **M** button long to go to the selection mode. Then select the Radio Mode and press the **M** button again.
2. The earphone takes the role as an antenna.



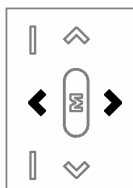
## Manual Preset and Preset Mode change



1. Press the **A→B** button to change the Preset Mode. It cannot be changed if there is no fixed preset.
2. In preset mode, preset No. will be displayed and in manual mode, "Off" will be displayed instead of preset No.



## Manual Preset



1. Press the **<** / **>** button in the radio screen to change frequency by one step.
2. Keep pressing the until the **<** or **>** button desired channel is found.



## Saving FM Channels



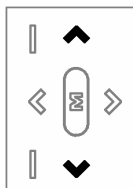
1. Preset save can be possible in Manual Mode. If you are in Preset Mode, press **M** button to change the button.



2. Press the **A→B** button to save the present frequency in the Manual Mode.
3. Preset can be saved up to No.24 and it will be automatically settled from No.1 in order. It cannot be saved with message "full memory if you use all channels up to No.24."



## Volume Adjustment



1. Volume can be adjusted from 0 to 40 by the **▲** / **▼** button.
2. When you turn on the power, volume default has the same value as before but if default is more than 20, it will be setting as 20.



## Delete Preset



1. In preset mode, select the preset what you want to delete then press the **A→B** button long to delete.



## Auto Preset



1. Press the **[A-B]** button to scan and save the frequencies automatically.
2. Press the **[A→B]** button to cancel the scanning while scanning.



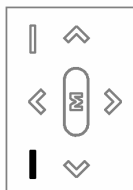
## Using Preset



1. Press the **[M]** button to change the Preset Mode. Preset Mode shows the Preset No.
2. Select the preset No by using the **[<]** / **[>]** button.



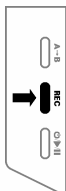
## Select Stereo/Mono



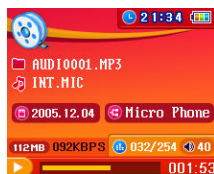
1. Press the **[MODE]** button to select the Stereo or Mono.



## FM Recording

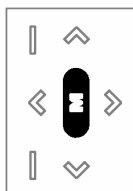


1. After selecting the broadcasting what you want to recording, press the **[REC]** button long to start the recording.
2. Press the **[REC]** button to stop the recording while recording then it return to radio mode.





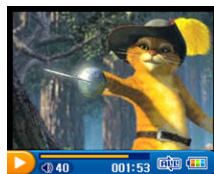
## Playback Moving Picture



1. Press the **M** button long to go into the Multimedia Mode and press the **M** button again to select.



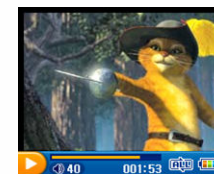
2. When appearing the moving picture mode, press the **▶** button to play after selecting the file.



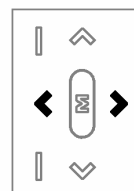
## Move Previous / Next Moving Picture



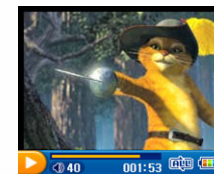
1. Press the **<**/**>** button shortly to play the previous / Next Moving Picture.
2. Press the **<** button to go into the head of the movie when song playing exceeded the time of 10 sec.



## Fast forward / Fast Rewind



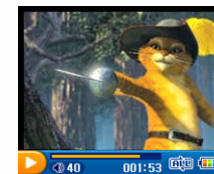
1. Press the **<**/**>** button to move previous / next song while in playback. A progress bar will move fast by pressing the button. At that time appoint the point where you want to play.



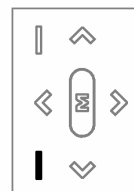
## Section Repeat



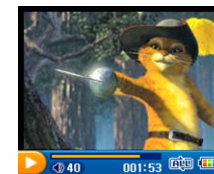
1. Section Repeat function can make available to listen to section of the file repeatedly. Press the **A→B** button to display A→ on the LCD.
2. Press the **A→B** button again to display A→B on the LCD. Then the section will be repeated.
3. Press the **A→B** button to stop the section repeat.



## Changing playback order



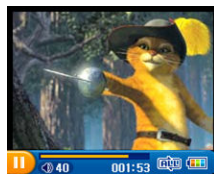
1. Press the **MODE** button short to move the Playback mode while in playback or pause.



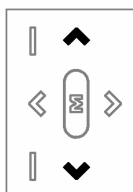
## Pause



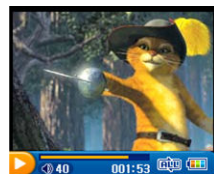
1. Press the **⏸** button to pause while in playback.
2. Press the **⏸** button to play while in pause.



## Volume Adjustment



1. Volume can be adjusted by using the **▲**/**▼** button from 0 to 40. The sound cannot be heard when volume level is setting as a 0.
2. When you turn on the power, volume default has the same value as before but if default is more than 20, it will be setting as 20.



## Recording



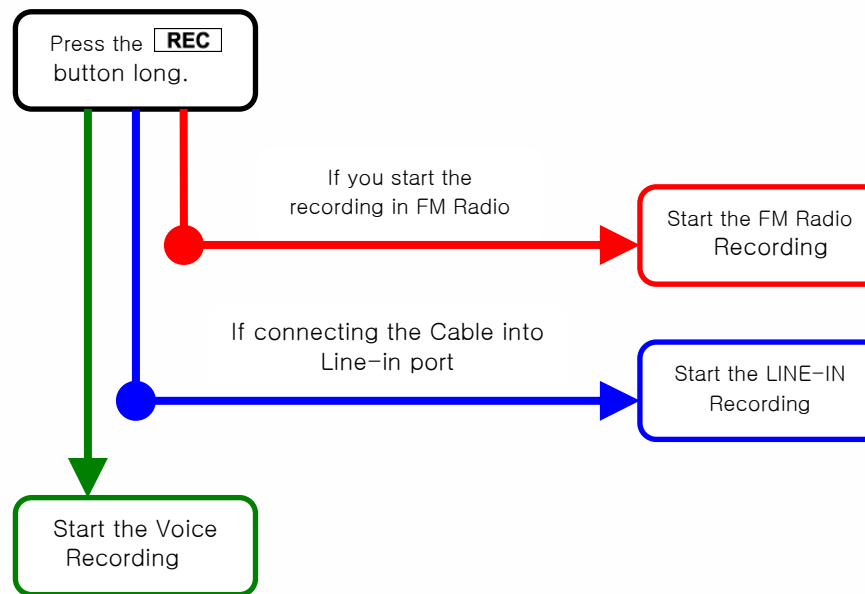
1. Press the **M** button long to move the conversion screen then press the **M** button again after selecting the Record mode.



1. Press the **REC** button to start the recording.
2. Press the **REC** button to finish the recording.



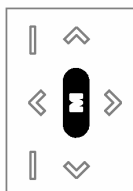
## Type of Recording



## Notice

- ✓ Voice Recording cannot be made when FM Radio mode or connecting the Cable into LINE-IN port.
- ✓ Recording cannot be made when battery power shortage..
- ✓ Recoding will be stopped if the Cable is removed while recording.
- ✓ While recording, volume cannot be adjusted.
- ✓ Avoiding failure in recording, please record a file after recording test.
- ✓ Recording can be made when the remaining memory is over 1MB.
- ✓ Recoding will be automatically stopped when memory is full.
- ✓ Be careful not to scrub or scratch the player while recording through built in Mic because it may affect noise.

## Viewing Image



1. Press the **M** button long to move the conversion screen then press the **M** button again after selecting the picture mode.



2. When appearing the Image mode, press the **A-B** button to play after selecting the file.



## Viewing Text



1. Press the **M** button long to move the conversion screen then press the **M** button again after selecting Text mode.



2. Press the **A-B** button to play after selecting the file what you want.



## Viewing previous / next image



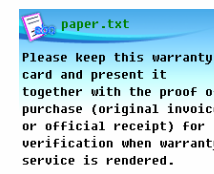
1. Press the **<**/**>** button shortly to move the previous or next image while displaying.



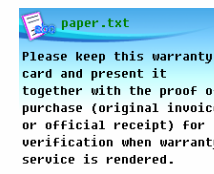
## Display Moving



1. While viewing the text, press the **▲**/**▼** button short to move the text one line by one line.



2. Move to next or previous page while press the **<**/**>** button in display.

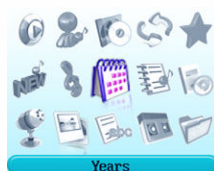


## Using Browse



1. Press the **M** button long to go to the selection Mode and press the **M** button again to move the Browse Mode.

2. Various Line-ups will appear on LCD as follows. Set the standard of Line-up and press the **M** button.



- Select All
- Artist
- Album
- Track
- Favorites
- New Musics
- Genre
- Years
- Playlist
- Audibles
- Recorded
- Picture
- Text
- Movies
- Folder

## Add the Favorite



1. Line up by folder in navigation mode.
2. Press the **M** button in the lists to add the Favorite after selecting the file.



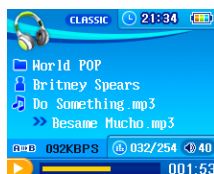
## Delete the Favorite



1. Select the Favorite in the navigation mode.
2. Press the **M** button to delete the item in Favorite after selecting the file.

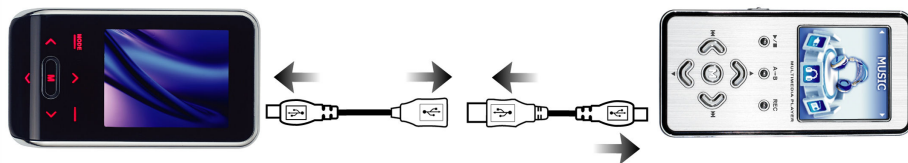


3. Select one of the Line-ups and press the **M** button to form a line as desired.



## Connection of USB Host

1. Connect the product to the portable device (Cellular phone, Digital Camera, MP3 Player and so on through USB host cable.



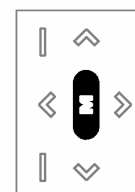
2. "File System UFD Mount Success!" message will be appearing on if it is recognized successfully.

3. It can be copied the files from the other devices after disappearing the pop up window.

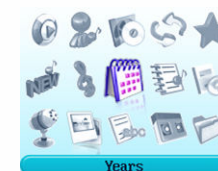
### ※ Note

- Make sure that portable devices must be turned on before connecting.
- Check the status of battery if the device uses the rechargeable battery because the product might be consuming electric power greatly when transferring esp. in case of transferring the big volume files.
- To prevent the failure of transfer, both devices should be fully charged.
- Most of removable disks, which are no need to install the driver (UMS – Universal Mass Storage) are compatible with USB Host mode. (Certain devices might not be compatible.)
- Compatible devices can be changed or added according to firmware upgrade of the product or the other devices.
- Make sure that connect the product with USB Host Cable supplied first then connect the other devices. Go through the proper procedure to avoid the potential problems.
- Portable devices must be turned on to use the USB Host function or it cannot be connected.

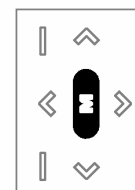
## Copy of USB Host file



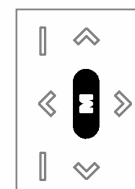
1. Press the  button to move the navigation mode.



2. Select the Folder > UFD to see the file lists from the other devices.



3. Select the file what you want to copy then press the  button to copy the file.



4. To check the file which is copied, press the  button to move the navigation mode then select Folder > NAND.



## Using Bluetooth

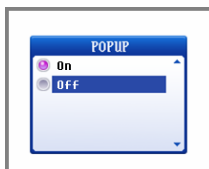
1. Prepare for the Bluetooth headset with stand by mode then go to the next step.



2. Press the **M** button long to move the selection screen then select the Bluetooth.



3. Select "ON" in the menu.



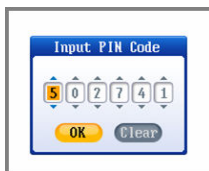
4. Select " Search" to seek the Bluetooth products which can be supported.  
Note: Before searching, headset must be OFF then press the power button 7sec or so to go to standby mode.



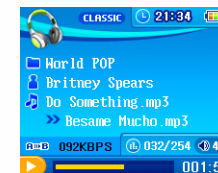
4. After searching, all Bluetooth product lists which were searched will be shown up but only one product can be connected. Press the **M** button to connect after selecting the product.



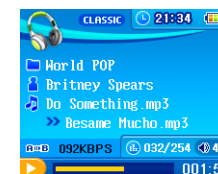
5. Pop up window for inputting the pin code will be shown up after connecting successfully. Input the correct pin code after checking the number then select the OK.  
※ Pin code can be checked through the manual for Bluetooth headset.



6. Completed the connection and confirmation after inputting the pin code, the screen will be changed into previous screen. If so, Bluetooth function can be activated.



7. Whenever you want use the Bluetooth again after completion, turn on the Bluetooth first then turn on the product. (In that case, it doesn't need to use the standby mode of Bluetooth.)



### Note

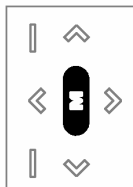
- Keep up within 10m between Bluetooth headset and the product. (If a wall or obstacle exist, a falling-off of sound quality or noise may happen.)
- Check whether Bluetooth headset support the A2DP or not.
- It is possible to listen without trouble only in case of no obstacle between them.
- Set the product volume as the maximum(40) then listen by adjusting the Bluetooth headset.
- Keep the distance from the other wireless device. When using the wireless device such as wireless internet, microwave and so on, it may not be working properly cause by the clash among the devices.

## Connection with TV

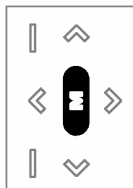
1. Connect TV with Cable provided.



2. Press the **M** button long to move the menu then select the TV.



3. Select the "ON" on the menu to output through the TV.



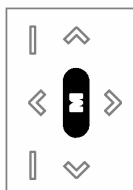
4. Set the Country, Screen Size, Resolution and so on to output properly.



### Note

- After connecting TV with Cable, check the input terminal. If it is setting with other mode, it cannot be displayed.
- Check the country setting. It may not be working properly cause by difference of output power per each country if it is selected wrong.

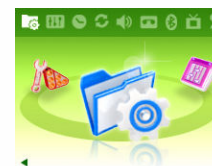
## Menu Setting



1. Press the **M** button to go to the selection mode and press the **M** button again to move the Menu Setting Mode. There are 9 Setting Mode as follows.

General	<ul style="list-style-type: none"> <li>● Skip Length</li> <li>● Scan Speed</li> <li>● Play Speed</li> <li>● Resume</li> <li>● Fade In</li> <li>● FM Region</li> <li>● Host On</li> </ul>	Sound	<ul style="list-style-type: none"> <li>● EQ/SRS</li> <li>● Base Boost</li> <li>● Treble Boost</li> </ul>
Display	<ul style="list-style-type: none"> <li>● Playback Time</li> <li>● Scroll Speed</li> <li>● Light Time</li> <li>● Contrast</li> <li>● Language</li> </ul>	Record	<ul style="list-style-type: none"> <li>● FM Radio</li> <li>● Line In</li> <li>● Int. Voice</li> <li>● V.O.R</li> </ul>
Timer	<ul style="list-style-type: none"> <li>● Auto Off</li> <li>● Sleep</li> <li>● Date/Time</li> </ul>	Bluetooth	<ul style="list-style-type: none"> <li>● Mode</li> <li>● Search</li> <li>● Connect</li> <li>● Delete</li> <li>● Information</li> </ul>
Mode	<ul style="list-style-type: none"> <li>● Playback Repeat</li> <li>● USB Mode</li> </ul>	Television	<ul style="list-style-type: none"> <li>● Mode</li> <li>● Country</li> <li>● Screen Size</li> <li>● Quality</li> <li>● Join</li> </ul>
		System	<ul style="list-style-type: none"> <li>● Information</li> <li>● Format</li> <li>● Load Default</li> </ul>

## General Setting



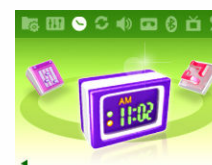
- ✓ Skip Length : Set the skip length of the fast search.
- ✓ Scan Speed : Set the scan speed in a music file.
- ✓ Play Speed : Control play speed.
- ✓ Resume : Playback will begin from the same place when the player is stopped or powered off.
- ✓ Fade In : When activated volume increases gradually at playback mode to prevent sudden loudness Select 5 stages from 0 to 5 seconds.
- ✓ FM Region : Select FM radio frequency region. In the selected region, listening FM radio is possible.
- ✓ Host On : Activate the recognition function for USB Host

## Display Setting



- ✓ Playback Time : Select playback time display type between elapse and remain.
- ✓ Scroll Speed : Set the scroll speed of the current title playback information. 5 stages(off,1,2,4,8) of scroll speed can be adjusted.
- ✓ Light Time : Adjust the backlight time of the LCD from 0 or 3 ~ 20.
- ✓ Contrast : Adjust the brightness of the LCD from 0 to 10.
- ✓ Language : Select the language. Currently, 16 languages are provided and can be added by firmware upgrade.

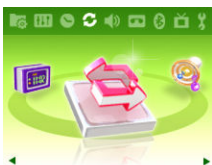
## Timer Setting



- ✓ Auto Off : Set the time to turn off the power automatically.
- ✓ Sleep : While playing set the sleep timer to turn off the power after the setup time.
- ✓ Date/Time : Set the date and time in the built in clock.
- ✓ Rec. Preset : Set the time to record by time reservation.

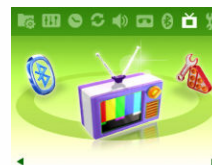


## Mode Setting



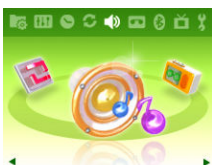
- ✓ Playback Repeat : Repeat the chosen files or directory.
- ✓ USB Mode : Set the USB connection mode.

## Television Setting



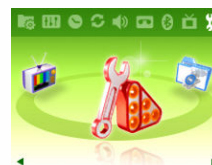
- ✓ Mode : Adjust the output to TV.
- ✓ Country : Adjust the output type according to the countries.
- ✓ Screen Size : Adjust the screen size.
- ✓ Quality : Set up the screen quality.

## Sound Setting



- ✓ EQ/SRS : Set the various equalizer mode. 12 E.Q modes are provided.
- ✓ Base Boost : Adjust the Bass output level.
- ✓ Treble Boost : Adjust the Treble output level.

## System Setting



- ✓ Information : Display the information of total memory capacity, available memory and software version.
- ✓ Format : Format the player.(All the data will be deleted)
- ✓ Load Default : Initialize to the factory default (All the user's setting default will be deleted)

## Record Setting



- ✓ FM Radio : Adjust recording quality and volume.
- ✓ Line In : Adjust external input recording quality and volume.
- ✓ Int. Voice : Adjust recording quality and volume.
- ✓ V.O.R : The voice recording mode will be automatically paused during silence.

## Bluetooth Setting



- ✓ Mode : Activate the Bluetooth.
- ✓ Search : Search the device which can be supported the Bluetooth then lists will be shown up.
- ✓ Connect : Synchronize the Bluetooth product selected.
- ✓ Delete : Delete the lists detected
- ✓ Information : Show up information for the Bluetooth.

### Formatting system at the set

- ✓ While formatting, all files in the set are completely deleted.
- ✓ Back up the files when you format the player. Just because the deleted files can not be recovered.
- ✓ Check the remaining battery when format it by set itself. Format can be stopped while the remaining battery is low and this can be caused a fatal problem to the set.

### Formatting from PC

- ✓ In formatting from PC, please do not format the set into NTFS file system (Windows 2000, Windows XP) but format into FAT16 or FAT32. Formatting the drive as NTFS will cause the player not to function.
- ✓ Do not disconnect USB cable while formatting. A fatal problem can be caused such as non power on.

## Using Transcoder

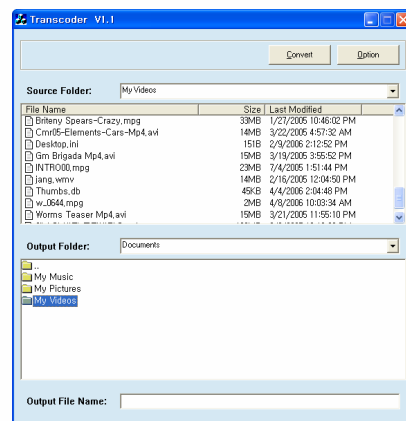
1. Execute the CD supplied then select the Transcoder when installation screen appears on.



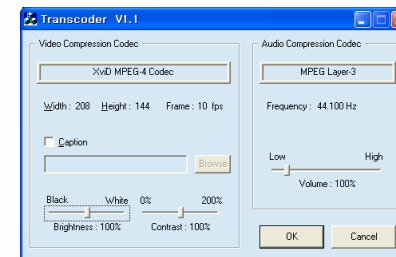
### ※ Note

- It can support the AVI, MPG, MPEG, DAT only.
- MPEG-2 and VBR format cannot be converted.
- To convert the file, Codec must be installed before converting.
- It gives advice to use the K-Lite(<http://free-codecs.com>) Codec Pack.
- Moving picture which is converted as an AVI file via Transcoder supplied can be played only.
- In case with Video file (Xvid), it will be set for 208x144 and in case of Audio file (MP3) will be set for 128kbps.

2. Select the moving picture file what you want and write down the file name and choose the directory where you want to save.



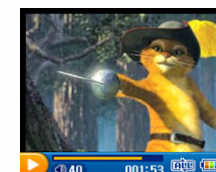
3. Click on "Option" button to adjust the volume, caption, brightness and so on at need.



4. Click on "Converter" or "Option" button to start the Converting. Then progress screen will be appeared on and then screen will be back to the first page after completion.



5. Attached file converted into the product to play.



## FAQ

Followings may not be troubles, please carefully examine symptoms.

**Q Can not turn the Power on.**

A Recharged the battery with USB Cable approximately 3 hours or so.

**Q Switch is not functioning.**

A 1. Check if the product is in HOLD.  
2. Check the battery status.

**Q No response to anything**

A Press the RESET which is located in the right side.

**Q LCD is not activated.**

A Check LCD brightness set.

**Q The computer cannot find the unit when connecting into PC.**

A 1. Check the OS if it is Windows 98..  
2. If you are user with Windows 98, please upgrade your windows.  
3. A separate drive has to be installed that is running under Windows 98.

**Q Difficult the download the file.**

A 1. Check the poor connection of USB.  
2. Check the memory space.

**Q Volume is not adjusting.**

A 1. Check if product is in HOLD.  
2. Check if it make a sound by speaker or earphone.

**Q Trouble with music file playback.**

A 1. Check if a file is damaged in the PC.  
2. If file is OK, check the audio codec or bit rate.  
3. If exceeding Bit Rate the product supported, convert it properly through the converting software. (The manufacturer doesn't supply the converting program.)  
4. Format the memory if these problems have happened after upgrading.

**Q Can not hear sound.**

A 1. Check the volume.  
2. Check if it make a sound by speaker or earphone.

**Q Trouble with moving picture playback.**

A 1. Check if a file is damaged in the PC.  
2. It is a wrong file if it couldn't run in the PC  
3. Check the frame size which is converted.  
4. If exceeding 128x112, it cannot play.

**Q Trouble with Transcoding.**

A 1. Re-install the Transcoder.  
2. Install the latest Codec after eliminating the previous Codec in the PC.  
3. Check the PC System Requirement.  
4. Check if a file is damaged in the PC  
5. Check if a file format supported the Transcoder.

**Q Can not hear FM Radio.**

A 1. Completely push the earphone tip into the product.  
2. Change the direction of earphone gradually.  
3. Check if make a sound by speaker or earphone.

**Q Too much noise with interrupted FM receiving.**

A 1. Check the earphone. It functions as an antenna.  
2. Use the product away from peripheral electric devices.

**Q The product cannot search the Bluetooth headset.**

A 1. Check if the Bluetooth headset is Stereo.  
2. Check if the Bluetooth can support A2DP.  
If not, it cannot be connected.

**Q The product can search the Bluetooth but it cannot be connected.**

A 1. Check if it is turned on. To connect the Bluetooth with the product, it must be turned on.  
2. Check the PINCODE if it is correct or not.  
Refer to the manual to connect the Bluetooth with the product properly and PINCODE. Usage might be difference per each headset.

**Q The Bluetooth and the product is connected but it cannot make the sound.**

A 1. Check if it is playing music.  
2. Check the volume level of headset.  
3. Check the state of charge for headset.  
(Turn up the volume up to maximum then adjust the headset volume.)

## Specification

### General Status

Size(W x H x D)	45 x 82 x 14 mm
Weight	51 g
Product Type	Plug & Play (Removable disk)
LCD	2.0" 260K Color TFT LCD (176x220 pixel)
USB	USB 2.0 High Speed
Memory	512MB, 1GB, 2GB Built-in flash memory
Battery	Built-in Litum Ploymer rechargable battery
Playing time	Video : 8 hours (Vol 20)
	Audio : 18 hours (MP3, 128bps, Vol 20, LCD Off)
Recharging	3 hours (by USB Cable)

※ The battery performance can be changed little bit according to the using condition.

### Radio

Frequency Range	76 ~ 108 MHz (World Wide Receiver)
S/N rate	50 dB
Preset	30 pcs
Antenna	Earphone Antenna

### Video

Video Format	AVI (XVID, 208x144 pixel)
Audio Format	MPEG Layer 3 (44.1 KHz, Stereo, 128 Kbps)

Frame per Sec	10 FPS
---------------	--------

### Audio

File Support	MP3, WMA, OGG
Channel	2 Channel Strero
Frequency Range	20 Hz ~ 20 KHz
Earphone Output	20 mW (L 10 mW + R 10 mW)
S/N Rate	90 dB
Speaker Output	200 mW (L 100 mW + R 100 mW)
Equalizer	Normal,Pop,Rock,Jazz,Classic,User EQ

### Recording

Recording Format	MP3
Recording Support	<ul style="list-style-type: none"> <li>- Voice Recording via Internal Mic</li> <li>- LINE-IN Recording</li> <li>- FM Radio Recording</li> </ul>
Recording Bit Rate	32/48/64/96/128/160/192 KBPS
Recording Time	36 hours (512MB, 32Kbps / 16khz sampling)

### Bluetooth

Part	Bluetooth Spec 1.2
Output	Class II (Max. 4 bBm)
Sensitivity	- 80 dBm
Profile	A2DP(Source), AVRCP(Target)

## Important Notice

Check the specification before buying. The manufacturer is not responsible for refund or returned goods if you change your mind after buying.

## Before proceeding with After Sales Service.

Please read carefully and understand the following contents. It may claims for the payment even if within the terms of guarantee.

- ✓ Broken through carelessness or mistake
- ✓ Product that are disassembled or modified
- ✓ Product with damaged by dropping or excessive shock
- ✓ Product with flooded or corroded by water or other substance
- ✓ Broken by conflicting with other devices
- ✓ Cannot confirm the serial No by Damaging

※ If you need to return a product that is unopened or found serious flaw, you may return it for exchange or refund within 10 days of the date of purchase.

## Customer support

Website : <http://www.dynetel.com> (mailto: service@dynetel.com)

Service process : Product registration (website) → Product consultation (by using website)  
→ Drop by A/S Center or send via post mail → Repair

## **Caution**

Modifications not expressly approved by the party responsible for compliance could void the user's authority to operate the equipment.

## **FCC Compliance Information**

This device complies with Part 15 of FCC Rules.  
Operation is subject to the following two conditions:

- (1) This device may not cause harmful interference, and
- (2) This device must accept any interference received.  
Including interference that may cause undesired operation.

## **Information to User**

This equipment has been tested and found to comply with the limits for a Class B digital device, pursuant to part 15 of the FCC Rules. These limits are designed to provide reasonable protection against harmful interference in a residential installation. This equipment generates, uses and can radiate radio frequency energy and, if not installed and used in accordance with the instructions, may cause harmful interference to radio communications. However, there is no guarantee that interference will not occur in a particular installation. If this equipment does cause harmful interference to radio or television reception, which can be determined by turning the equipment off and on, the user is encouraged to try to correct the interference by one or more of the following measures:

- Reorient or relocate the receiving antenna.- Increase the separation between the equipment and receiver.
- Connect the equipment into an outlet on a circuit different from that to which the receiver is connected.
- Consult the dealer or an experienced radio/ tv technician for help.