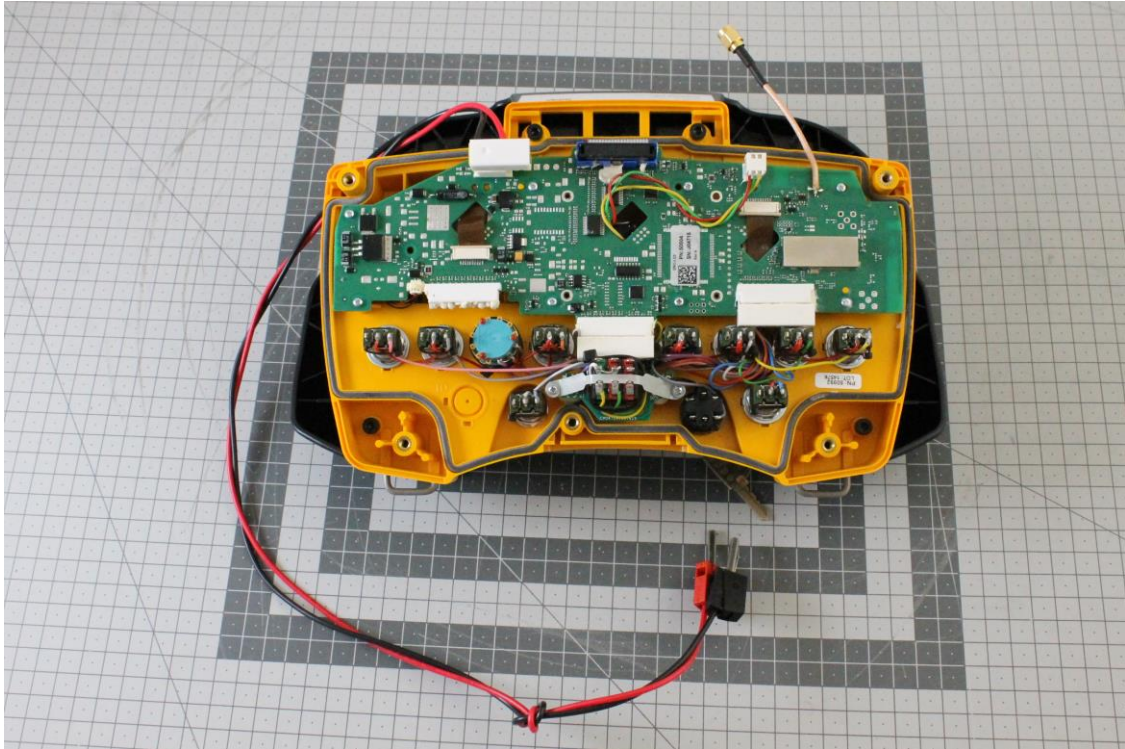


Photograph 1. EUT, radiated sample



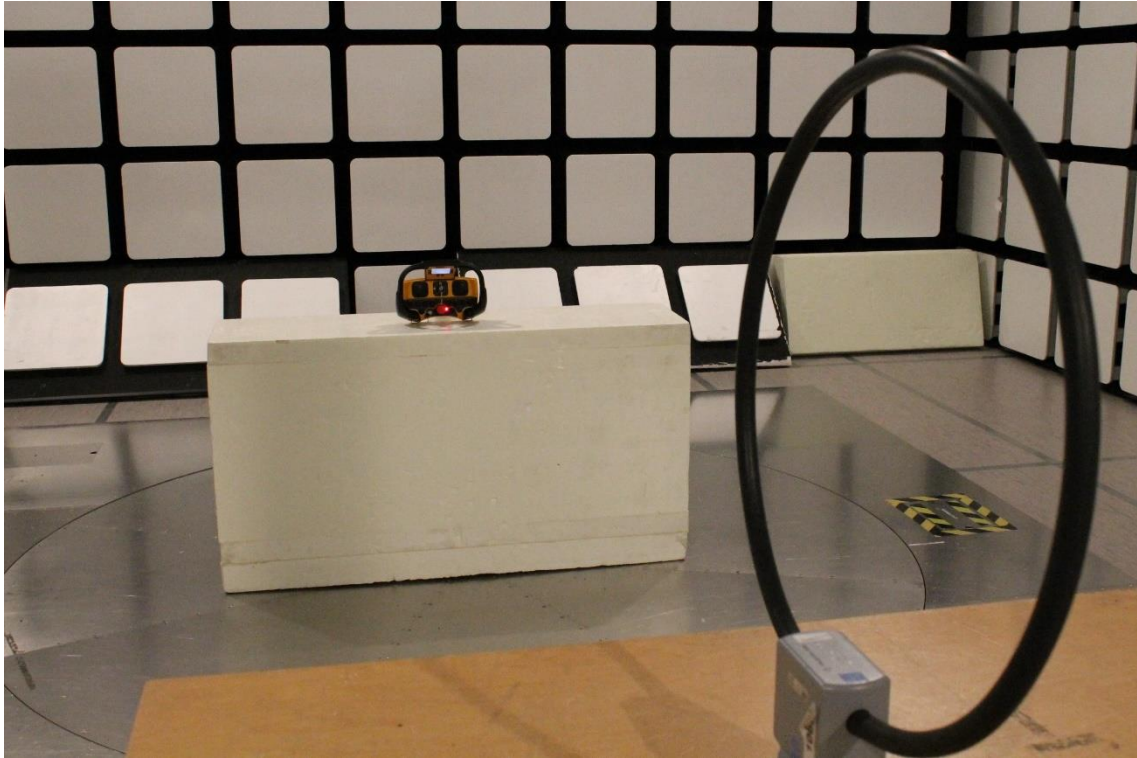
Photograph 2. Serial number, radiated EUT



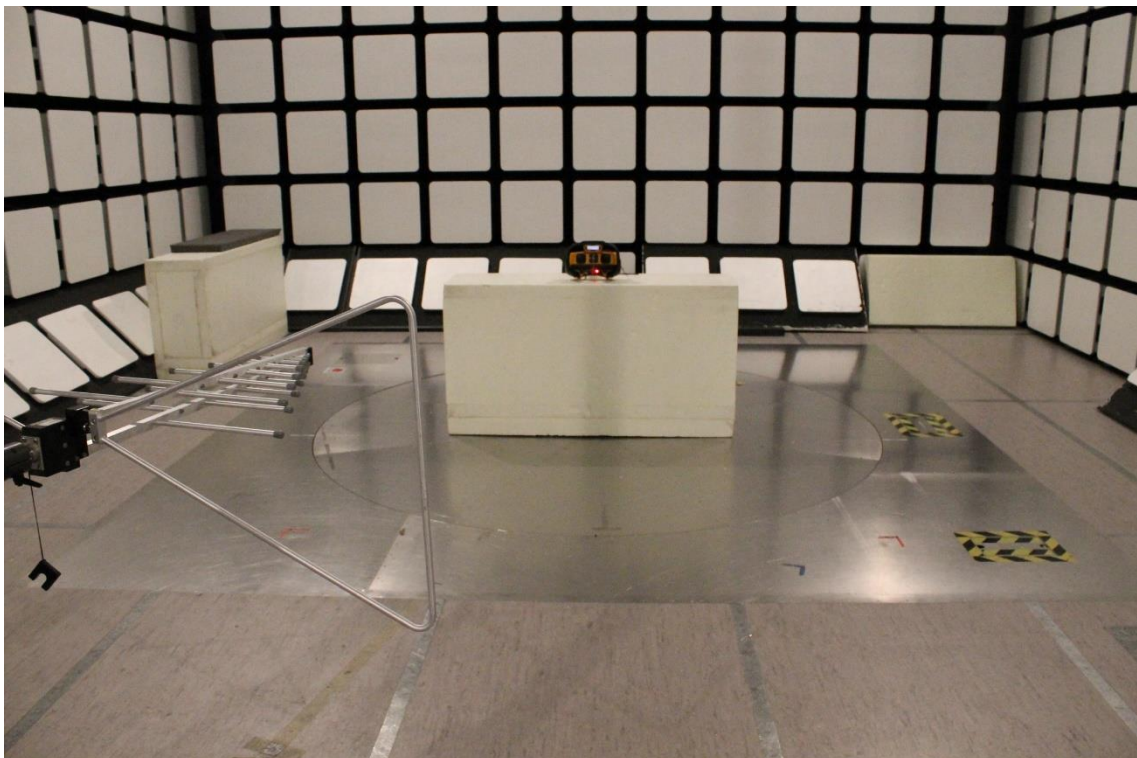
Photograph 3 EUT with antenna port for conducted tests.



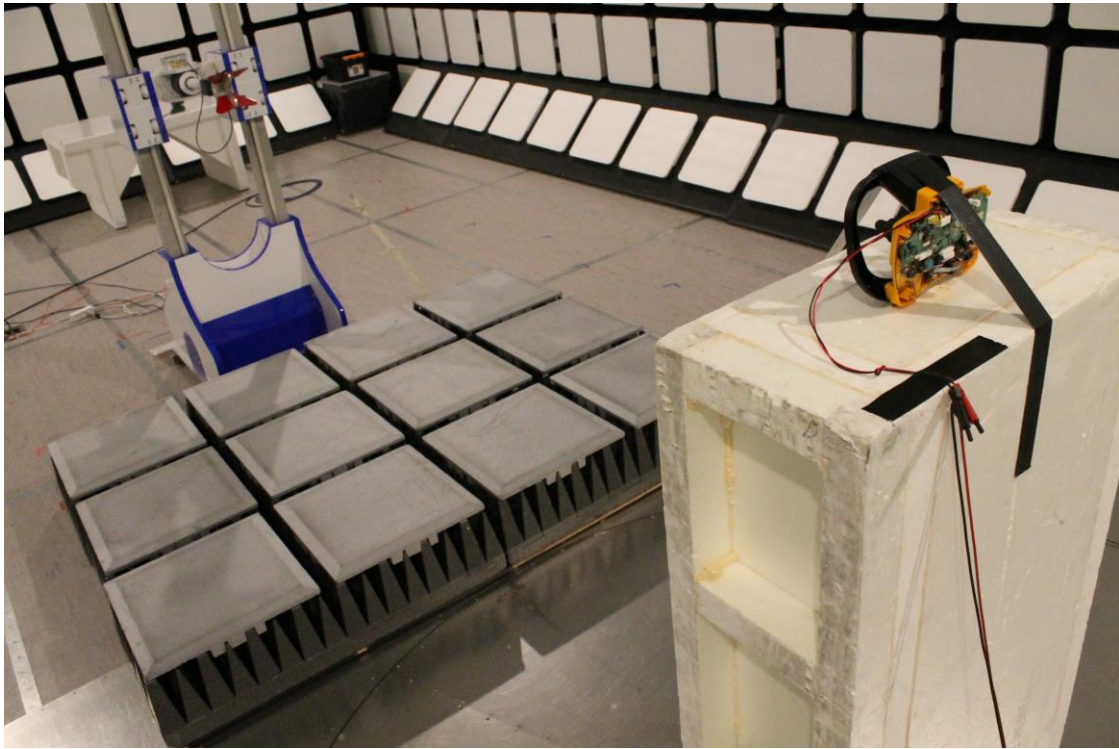
Photograph 4. Serial number, conducted EUT



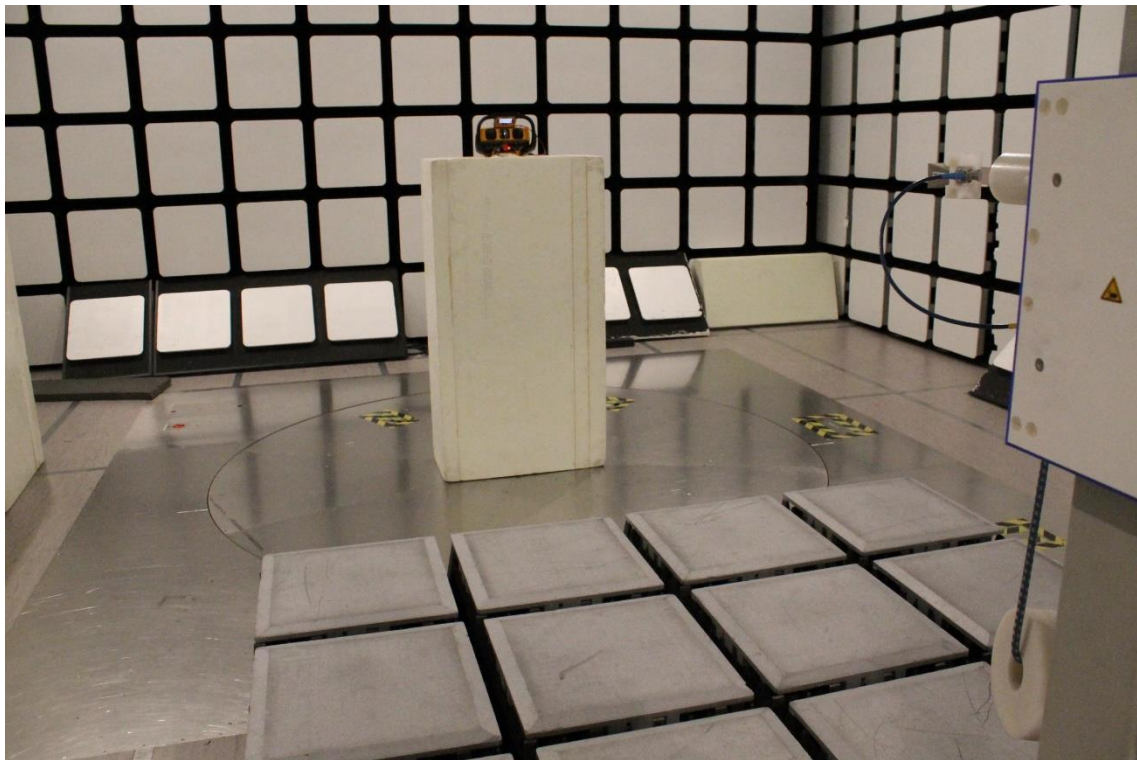
Photograph 5. Radiated Spurious Emissions 9 kHz – 30 MHz



Photograph 6. Radiated Spurious Emissions 30 MHz – 1000 MHz



Photograph 7. Radiated Spurious Emissions 1 GHz – 18 GHz



Photograph 8. Radiated Spurious Emissions 18 GHz – 26.5 GHz