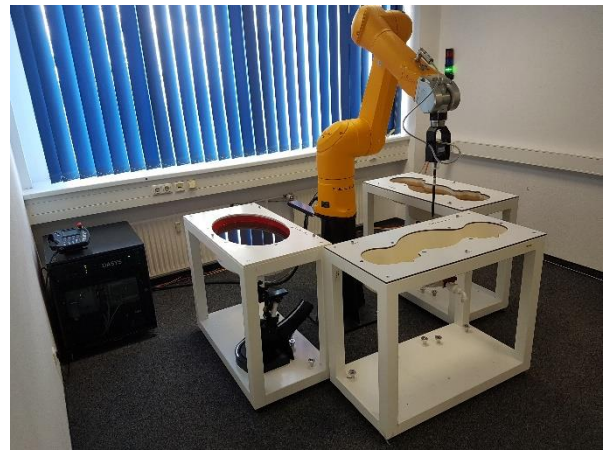


Annex D  
Photo documentation

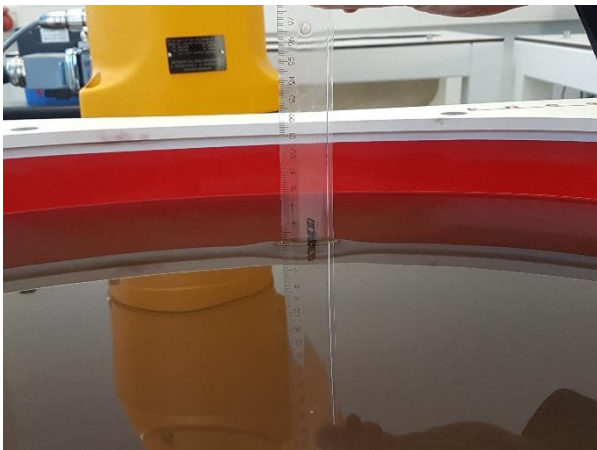
1. SAR measurement System
2. Photographs of Tissue Simulate Liquid
3. Photographs of EUT test position
4. EUT Constructional Details

1. SAR measurement System



2. Photographs of Tissue Simulate Liquid

Photo 1: Tissue Simulant Liquid Body 600-6000MHz



3. Photographs of EUT test position

Photo 1: Back side 0mm



Photo 2: Left side 0mm



Photo 3: Left side tilt 0mm

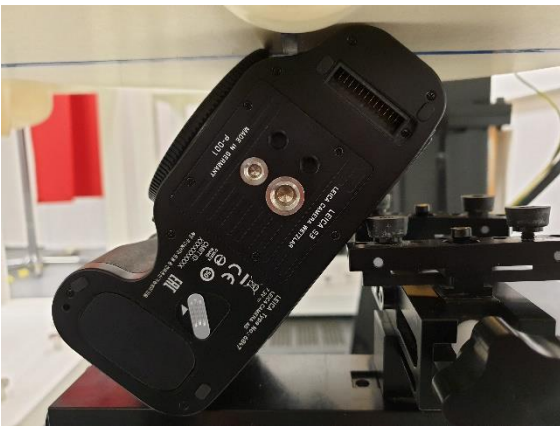


Photo 4: Left side tilt 0mm



Photo 5: Left side with lens 0mm



Photo 6: Front side 0mm



4. EUT Constructional Details

Photo 1: Front view



Photo 2: Back view



Photo 3: Left view



Photo 4: Right view



Photo 5: Top view with lens



Photo 6: Front view with handgrip

