



Annex C Photo documentation

Appendix to Test Report No.: 1-6443/23-01-09_TR1-R01

Testing Laboratory

cetecom advanced GmbH

Untertuerkheimer Strasse 6 – 10

66117 Saarbruecken/Germany

Phone: + 49 681 5 98 - 0

Fax: + 49 681 5 98 - 9075

Internet: <https://www.cetecomadvanced.com>

e-mail: mail@cetecomadvanced.com

Accredited Test Laboratory:

The testing laboratory (area of testing) is accredited according to DIN EN ISO/IEC 17025 (2018-03) by the Deutsche Akkreditierungsstelle GmbH (DAkkS)

The accreditation is valid for the scope of testing procedures as stated in the accreditation certificate starting with the registration number: D-PL-12047-01-00.

Photo 1: Measurement System DASy

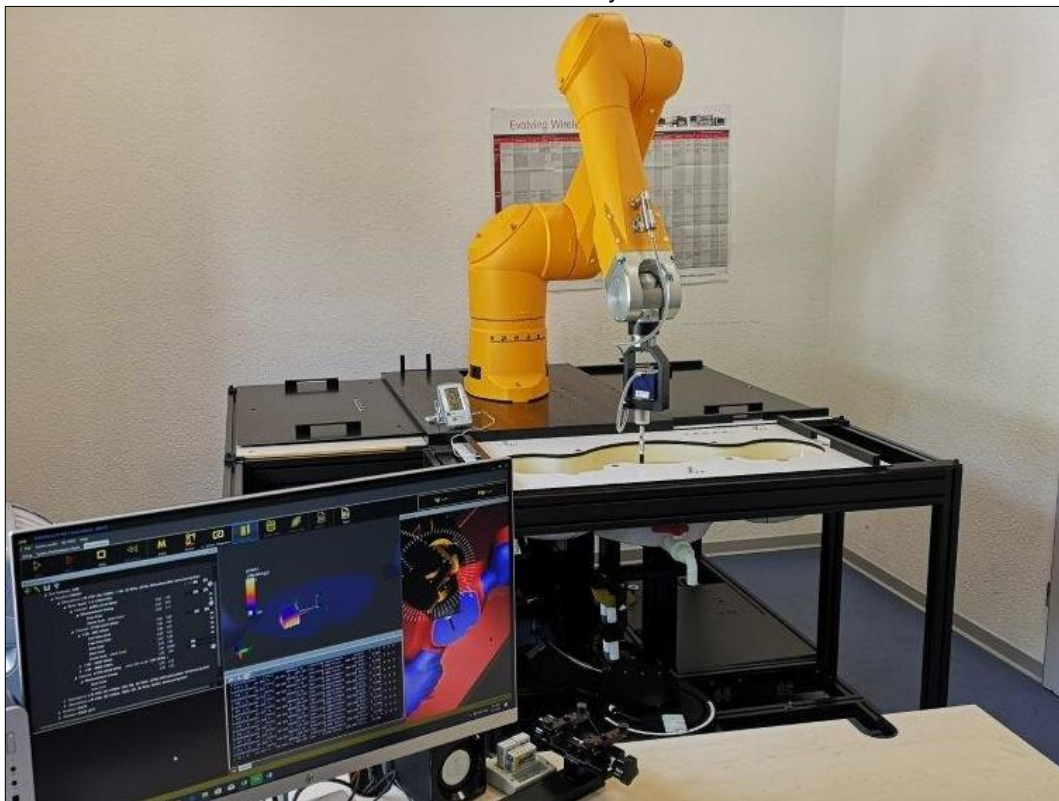


Photo 2: DUT - front view with visoflex 2



Photo 3: DUT - front view



Photo 4: DUT - top view

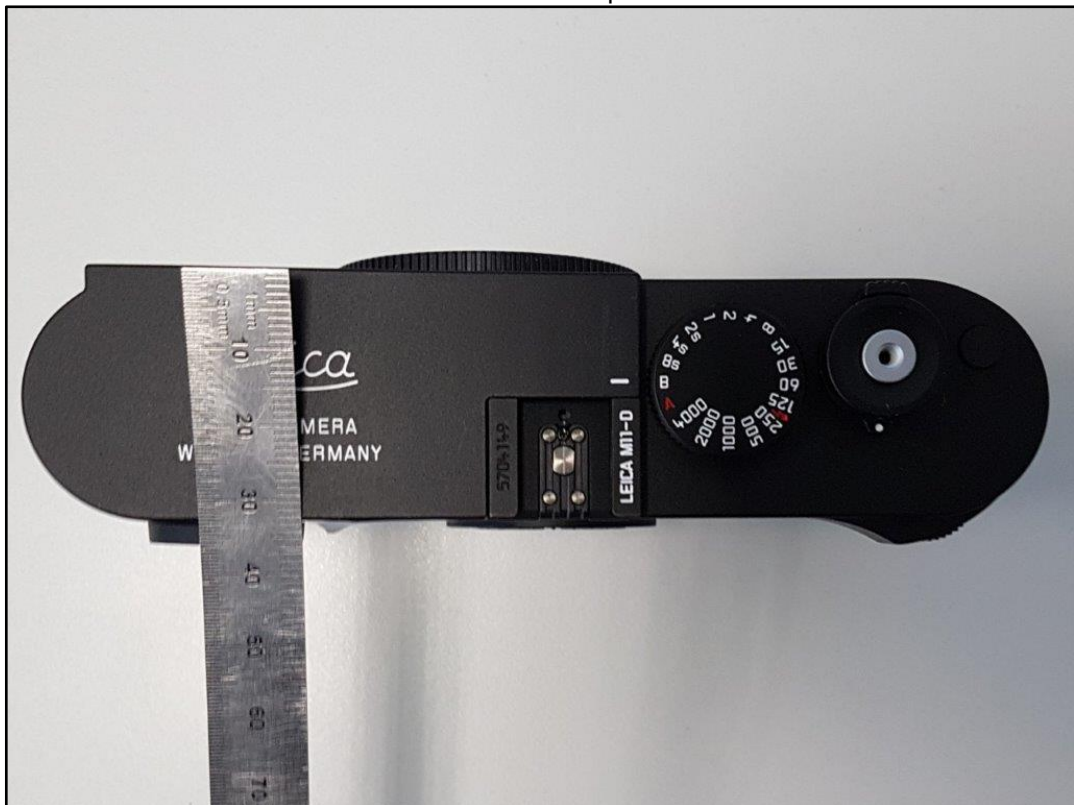


Photo 5: DUT - back view



Photo 6: DUT - bottom view (label)



Photo 7: Visoflex 2



Photo 8: Visoflex 2



Photo 9: Lens



Photo 10: Thumb



Photo 11: Thumb



Photo 12: Handgrip



Photo 13: DUT - bottom side



Photo 14: Battery



Photo 15: Test position body and head worn front side with 0 mm distance



Photo 16: Test position body and head worn top side with 0 mm distance



Photo 17: Test position body worn bottom side with 0 mm distance



Photo 18: Test position limb worn right side with 0 mm distance



Photo 19: Test position limb worn left side with 0 mm distance

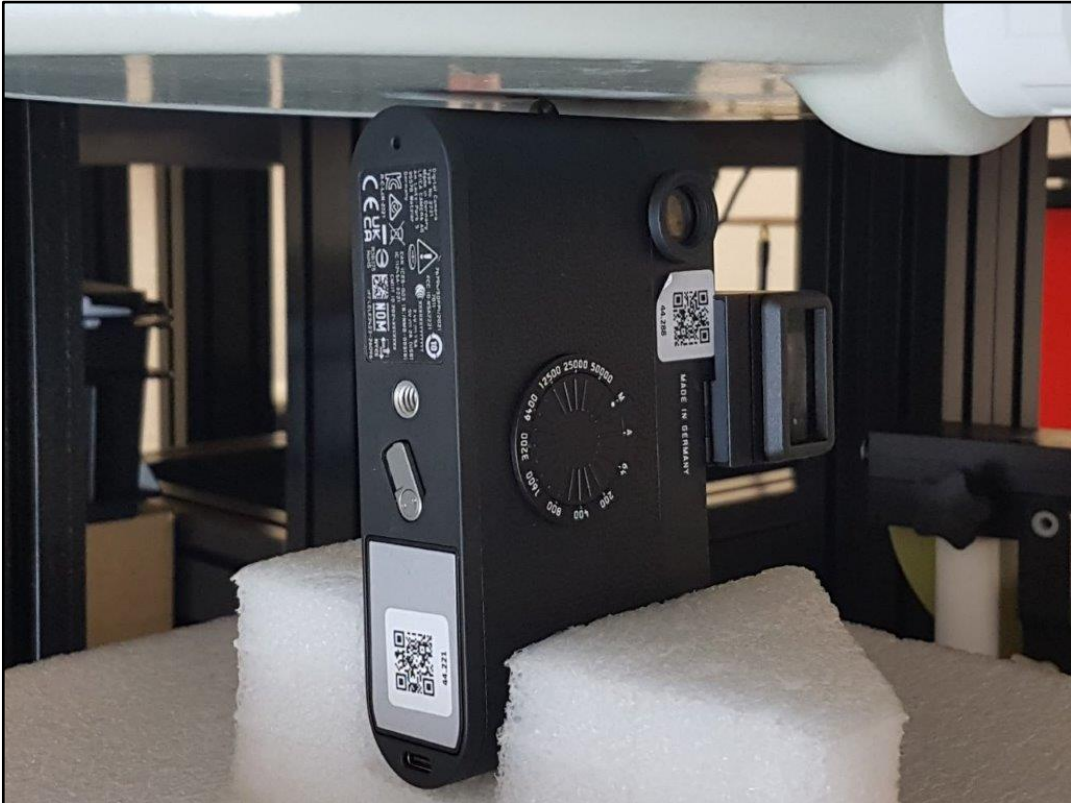


Photo 20: Test position limb worn back side with 0 mm distance



Photo 21: Test position limb worn back side with 0 mm distance with visoflex 2 and handgrip



Photo 22: Test position limb worn back side with 0 mm distance with thumb and handgrip

