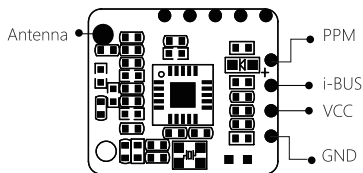


产品介绍 Introduction

FS-iA8X 是一款专用于穿越机的单天线双向传输接收机，采用了 AFHDS 2A（第二代增强版自动跳频数字系统）。它体积小便于安装，可输出标准 PPM 信号和 i-BUS 信号。

The FS-iA8X is a single antenna bidirectional receiver using the AFHDS 2A (Second Generation Automatic Frequency Hopping Digital System) protocol. It's compact, easy to install and can output using a standard PPM or i-BUS signal.

接收机概览 Receiver overview



用于连接接收机与模型的各个部件。

PPM 信号接口：输出标准的 PPM 信号。

i-BUS 信号接口：用于输出 i-BUS 信号。

VCC：电源电压为 4.0~8.4V。

GND：连接地线。

These ports connect the receiver to various models, component's and flight controllers.

PPM signal port: Outputs standard PPM signal.

i-BUS signal port: Outputs i-BUS signal.

VCC: Power supply voltage from 4.0 – 8.4V.

GND: Connect to ground wire.

► 注意事项：

使用前必须确保本产品与模型安装正确，否则可能导致模型发生严重损坏。

关闭时，请务必先关闭接收机电源，然后关闭发射机。如果关闭发射机电源时接收机仍然在工作，将有可能导致遥控设备失控或者引擎继续工作而引发事故。

确保接收机安装在远离电机，电子调速器或电子噪声过多的区域。

接收机天线需远离导电材料，例如金属棒和碳物质。为了避免影响正常工作，请确保接收机和导电材料之间至少有 1 厘米以上的距离。

准备过程中，请勿连接接收机电源，避免造成不必要的损失。

► Attention:

Make sure the product is installed and calibrated correctly, failure to do so may result in serious injury.

Make sure the receiver's battery is disconnected before turning off the transmitter, failure to do so may lead to unintended operation or loss of control.

Make sure the receiver is mounted away from motors, electronic speed controllers or any device that emits excessive electrical noise.

Keep the receiver's antenna at least 1cm away from conductive materials such as carbon or metal.

Do not power on the receiver during the setup process to prevent loss of control.

对码 Binding

1. 将发射机进入对码状态；（发射机进入对码状态的方式可能不同，请根据发射机的使用说明书进行操作）
2. 接收机接通电源即进入对码状态；
接收机接通电源，等待 1s 后进入对码状态；
接收机指示灯快闪表示进入对码状态；
3. 当接收机指示灯变为常亮时，表示对码成功，即可与接收机正常通信。
4. 检查发射机、接收机、模型是否正常工作。如需重新对码，请重复以上步骤重新对码。

1. First put the transmitter into bind mode (see the transmitter's user manual for instructions on how to activate bind mode.)
2. Connect the receiver to power, after 1 second the receiver's LED will start to flash indicating that it has entered bind mode.
3. When the receiver's LED stops flashing the transmitter and receiver have successfully bound.
4. Check to make sure that the transmitter and receiver are working as expected, if there are any issues or unexpected operation follow the steps above to bind again.

产品规格 Product specification

- 通道个数：8个
- 适用机型：穿越机
- 数据输出：PPM/i-BUS
- 频率范围：2.408-2.475GHz
- 波段宽度：500KHz
- 波段个数：135个
- 发射功率：<20dBm (EU)
- 接收灵敏度：-92dBm
- 2.4G 模式：AFHDS 2A
- 调制方式：GFSK
- 传输方式：FHSS
- 通道延时：<15ms
- 天线类型：单天线
- 输入电源：4.0 ~ 8.4V
- 显示方式：LED 指示
- 在线更新：无
- 空旷无干扰地面距离（发射接收距地面1米）：大于200m
- 各通道数据：1500us；范围：1000 ~ 2000us
- 外形尺寸：15*13*3mm
- 机身重量：<2g
- 安规认证：CE，FCC
- Channels: 8
- Model Type: Multi Rotor
- Data Output: PPM/i-BUS
- Frequency Range: 2.408-2.475GHz
- Bandwidth: 500KHz
- Number of Bands: 135
- Transmission Power: <20dBm (EU)
- Receiver Sensitivity: -92dBm
- 2.4GHz Protocol: AFHDS 2A
- Modulation: GFSK
- Transmission Method: FHSS
- Channel Latency: <15ms
- Antenna: Single Antenna
- Input Power: 4.0-8.4V
- Display: LED Indicator
- Online Update: None
- Range without interference 1m from the ground : more than 200m
- Channel Data: 1500us ; Range : 1000 ~ 2000us
- Dimensions: 15*13*3mm
- Weight: <2g
- Certification: CE , FCC

FCC Compliance Statement

This device complies with Part 15 of the FCC Rules. Operation is subject to the following two conditions: (1) this device may not cause harmful interference, and (2) this device must accept any interference received, including interference that may cause undesired operation.

Changes or modifications not expressly approved by the party responsible for compliance could void the user's authority to operate the equipment.

FCC Radiation Exposure Statement

This modular complies with FCC RF radiation exposure limits set forth for an uncontrolled environment. This transmitter must not be co-located or operating in conjunction with any other antenna or transmitter.

If the FCC identification number is not visible when the module is installed inside another device, then the outside of the device into which the module is installed must also display a label referring to the enclosed module. This exterior label can use wording such as the following: "Contains Transmitter Module FCC ID: N4ZIA8X00 or Contains FCC ID: N4ZIA8X00"

When the module is installed inside another device, the user manual of the host must contain below warning statements:

1. This device complies with Part 15 of the FCC Rules. Operation is subject to the following two conditions:

- (1) This device may not cause harmful interference.
- (2) This device must accept any interference received, including interference that may cause undesired operation.

2. Changes or modifications not expressly approved by the party responsible for compliance could void the user's authority to operate the equipment.

The devices must be installed and used in strict accordance with the manufacturer's instructions as described in the user documentation that comes with the product

Any company of the host device which install this modular with limit modular approval should perform the test of radiated emission and spurious emission according to FCC part 15C : 15.247 and 15.209 requirement, Only if the test result comply with FCC part 15C : 15.247 and 15.209 requirement , then the host can be sold legally.



FCC ID : N4ZIA8X00