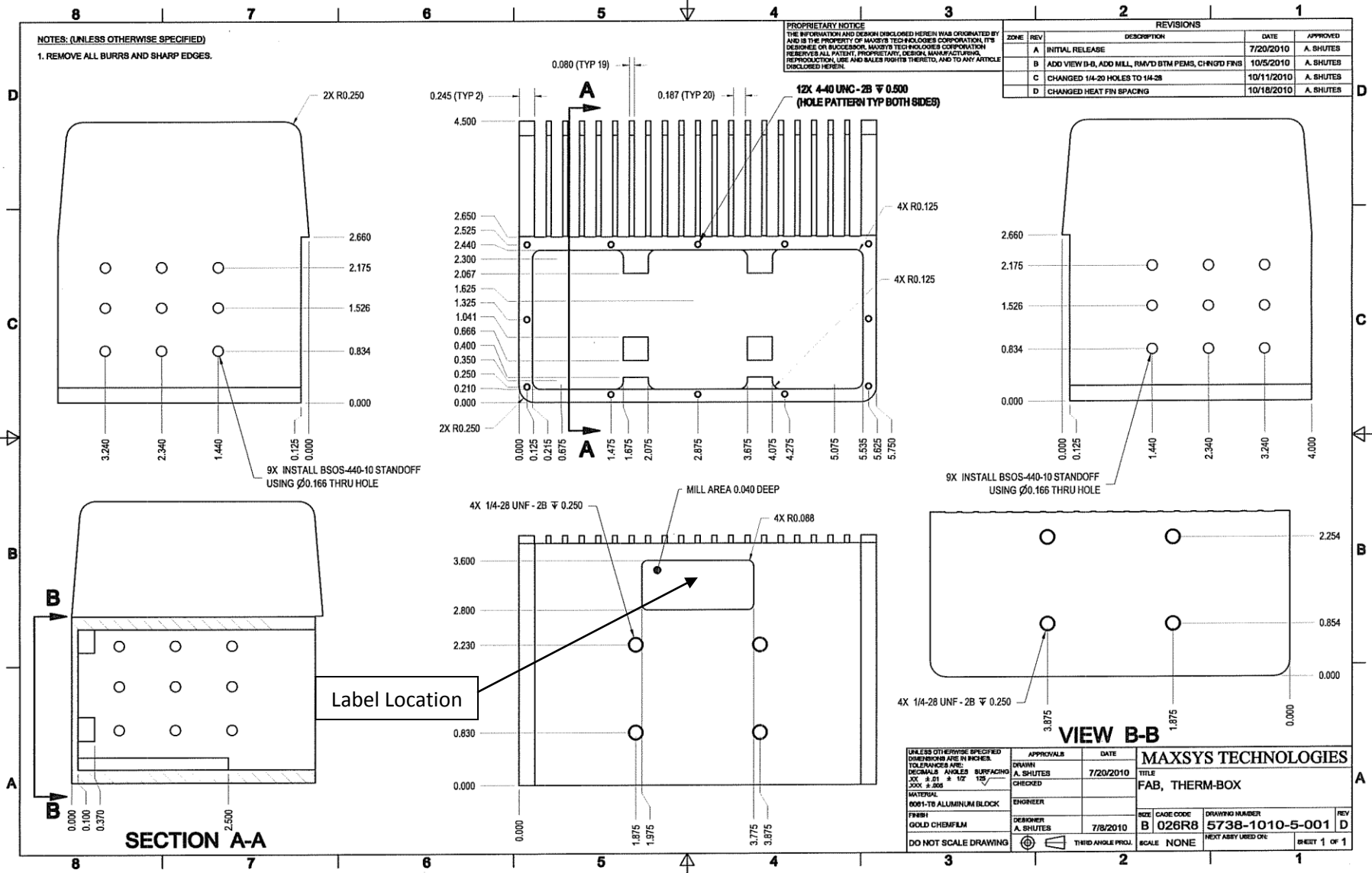


NOTES: (UNLESS OTHERWISE SPECIFIED)
 1. REMOVE ALL BURRS AND SHARP EDGES.

PROPRIETARY NOTICE
 THE INFORMATION AND DESIGN DISCLOSED HEREIN WAS ORIGINATED BY AND IS THE PROPERTY OF MAXSYS TECHNOLOGIES CORPORATION, ITS PREDECESSORS OR SUCCESSORS. MAXSYS TECHNOLOGIES CORPORATION RESERVES ALL PATENT, PROPRIETARY, DESIGN, MANUFACTURING, REPRODUCTION, USE AND SALES RIGHTS THEREIN, AND TO ANY ARTICLE DISCLOSED HEREIN.

REVISIONS				
ZONE	REV	DESCRIPTION	DATE	APPROVED
	A	INITIAL RELEASE	7/20/2010	A. SHUTES
	B	ADD VIEW B-B, ADD MILL, RAY/D BTM FEEDS, CHNGD FINIS	10/5/2010	A. SHUTES
	C	CHANGED 1/4-20 HOLES TO 1/4-28	10/11/2010	A. SHUTES
	D	CHANGED HEAT FIN SPACING	10/18/2010	A. SHUTES



UNLESS OTHERWISE SPECIFIED DIMENSIONS ARE IN INCHES. TOLERANCES ARE: DECIMALS ANGLES SURFACING .005 ± .01 ± .02 12° .000 ± .005	APPROVALS	DATE	MAXSYS TECHNOLOGIES	
	DRAWN A. SHUTES CHECKED ENGINEER MATERIAL 8001-T6 ALUMINUM BLOCK FINISH GOLD CHEMFILM DO NOT SCALE DRAWING	DATE 7/20/2010 ENGINEER A. SHUTES 7/8/2010	TITLE FAB, THERM-BOX SIZE B 026R8 SCALE NONE	DRAWING NUMBER 5738-1010-5-001 NEXT ASSY USED ON