



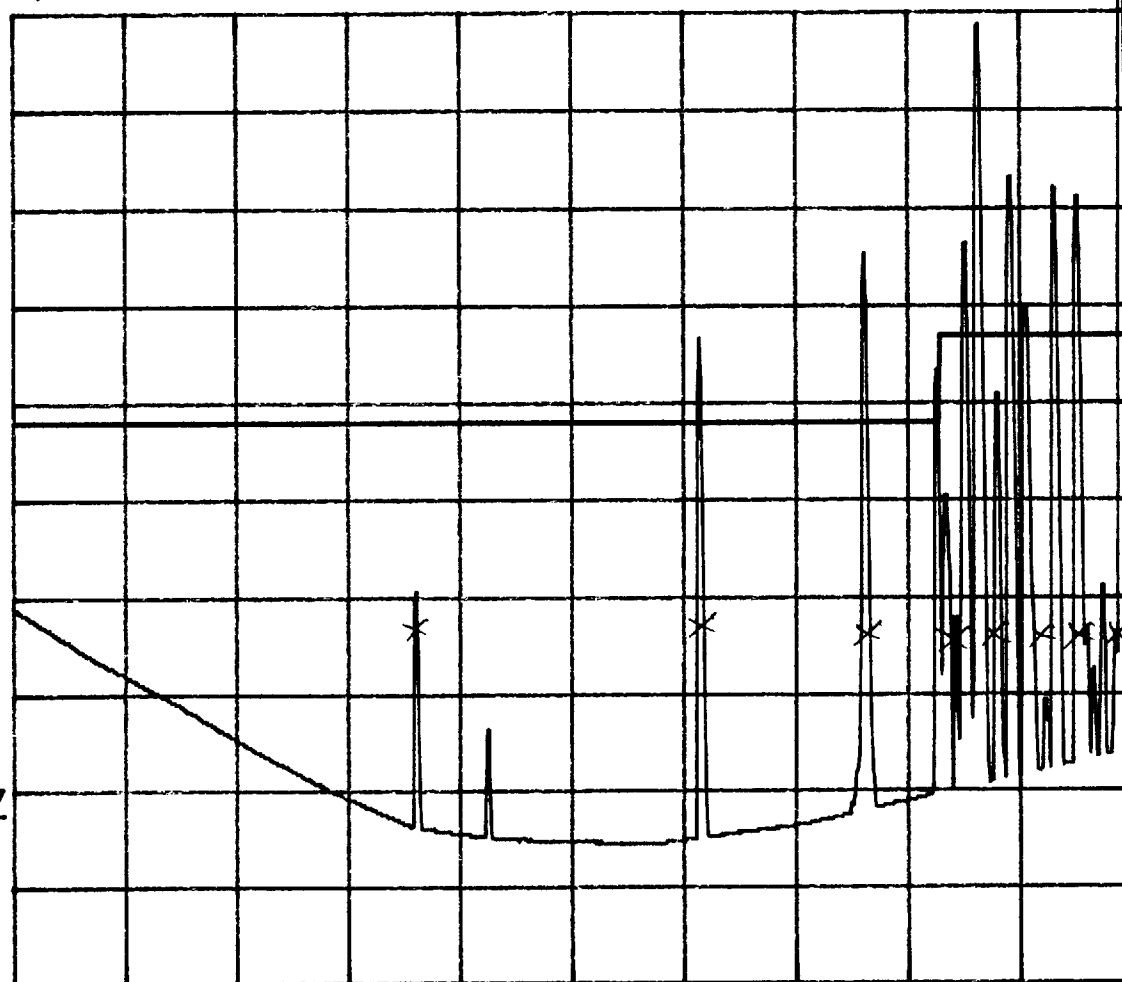
| | | |
|----------------------|---------------------------|----------------------------|
| TEST: FCC RADIATED | EUT: AIRSITE REMOTE RADIO | S/N: B85ARE510 |
| FREQ: 30M-100MHZ | SPEC: FCC CLASS A | ANT.HT/POL: 1.25m\ H |
| DETECTOR: QUASI PEAK | LINE UNDER TEST: N/A | EUT POSITION: 180° |
| DATE: 1-12-99 | TEST SITE: 3 METER | TESTER: <i>[Signature]</i> |

REF 70.0 dB μ V/m
5dB/

ATT 0 dB

A_write B_blank

RBW
120 kHz
VBW
1 MHz
SWP
500 s



START 30.00 MHz

STOP 100.00 MHz



TEST: FCC RADIATED
FREQ: 30M-100MHz
DETECTOR: QUASI PEAK
DATE: 1-12-99

EUT: AIRSITE REMOTE RADIO
SPEC: FCC CLASS A
LINE UNDER TEST: N/A
TEST SITE: 3 METER

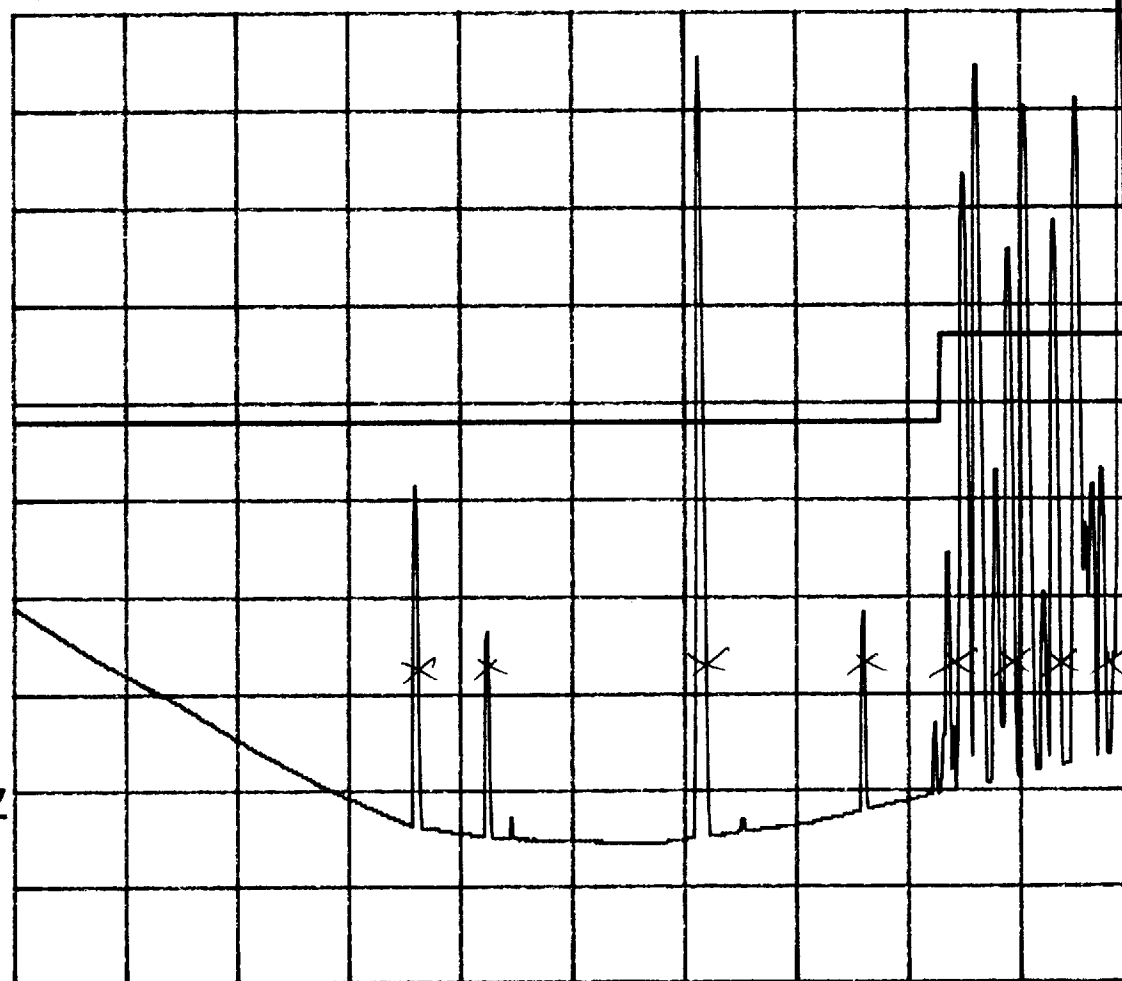
S/N: B85ARE510
ANT.HT/POL: 1.25m V
EUT POSITION: 180°
TESTER: AD

REF 70.0 dB μ V/m
5dB/

ATT 0 dB

A_write B_blank

RBW
120 kHz
VBW
1 MHz
SWP
500 s



START 30.00 MHz

STOP 100.00 MHz



TEST: FCC RADIATED

EUT: AIRSITE REMOTE RADIO

S/N: B85ARE510

FREQ: 100M-200MHz

SPEC: FCC CLASS A

ANT.HT/POL: 1.25m H

DETECTOR: QUASI PEAK

LINE UNDER TEST: N/A

EUT POSITION: 247°

DATE: 1-12-99

TEST SITE: 3 METER

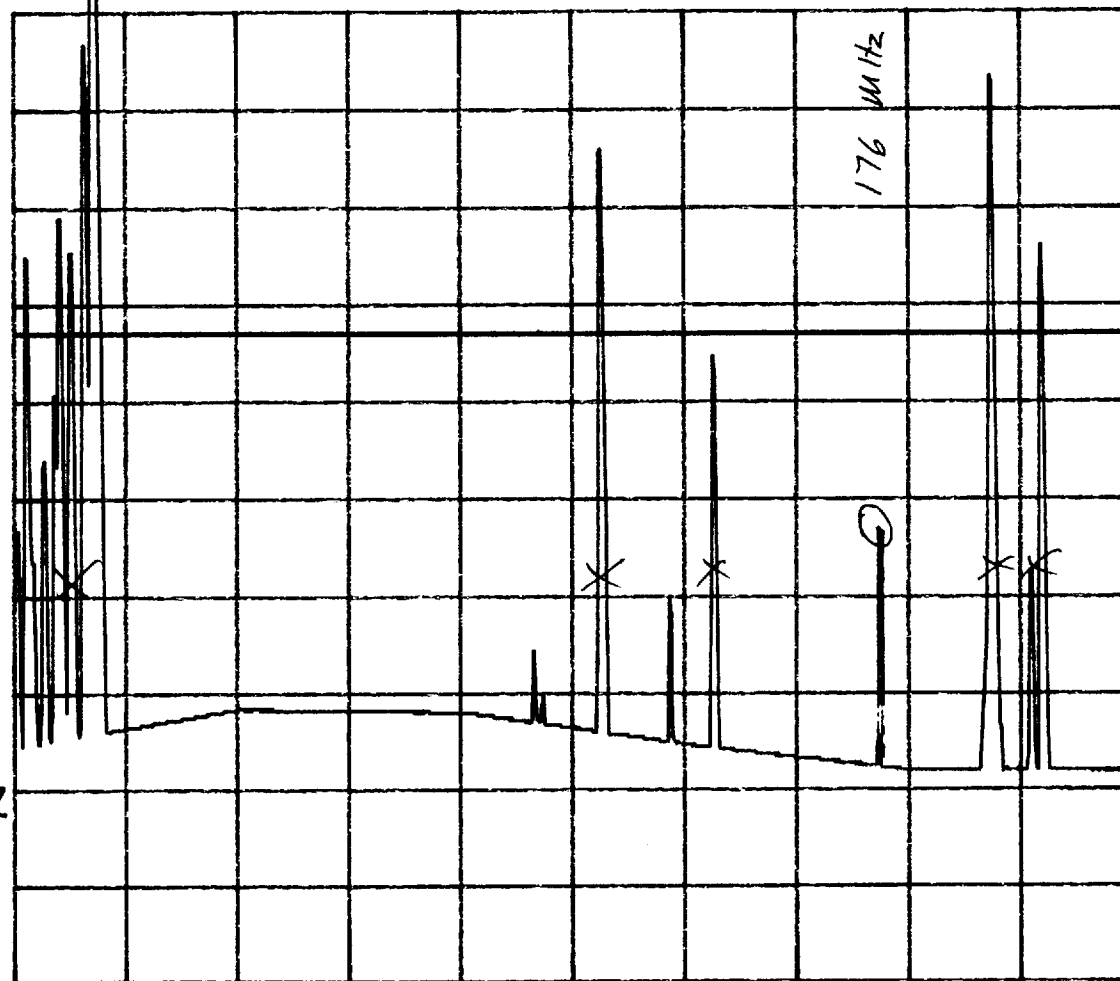
TESTER: *AB*

REF 70.0 dB μ V/m
5dB/

ATT 0 dB

A_write B_blank

RBW
120 kHz
VBW
1 MHz
SWP
500 s



START 100.0 MHz

STOP 200.0 MHz



TEST: FCC RADIATED

EUT: AIRSITE REMOTE RADIO

S/N: B85ARE510

FREQ: 100M-200MHz

SPEC: FCC CLASS A

ANT.HT/POL: 1.5m V

DETECTOR: QUASI PEAK

LINE UNDER TEST: N/A

EUT POSITION: 157°

DATE: 1-12-99

TEST SITE: 3 METER

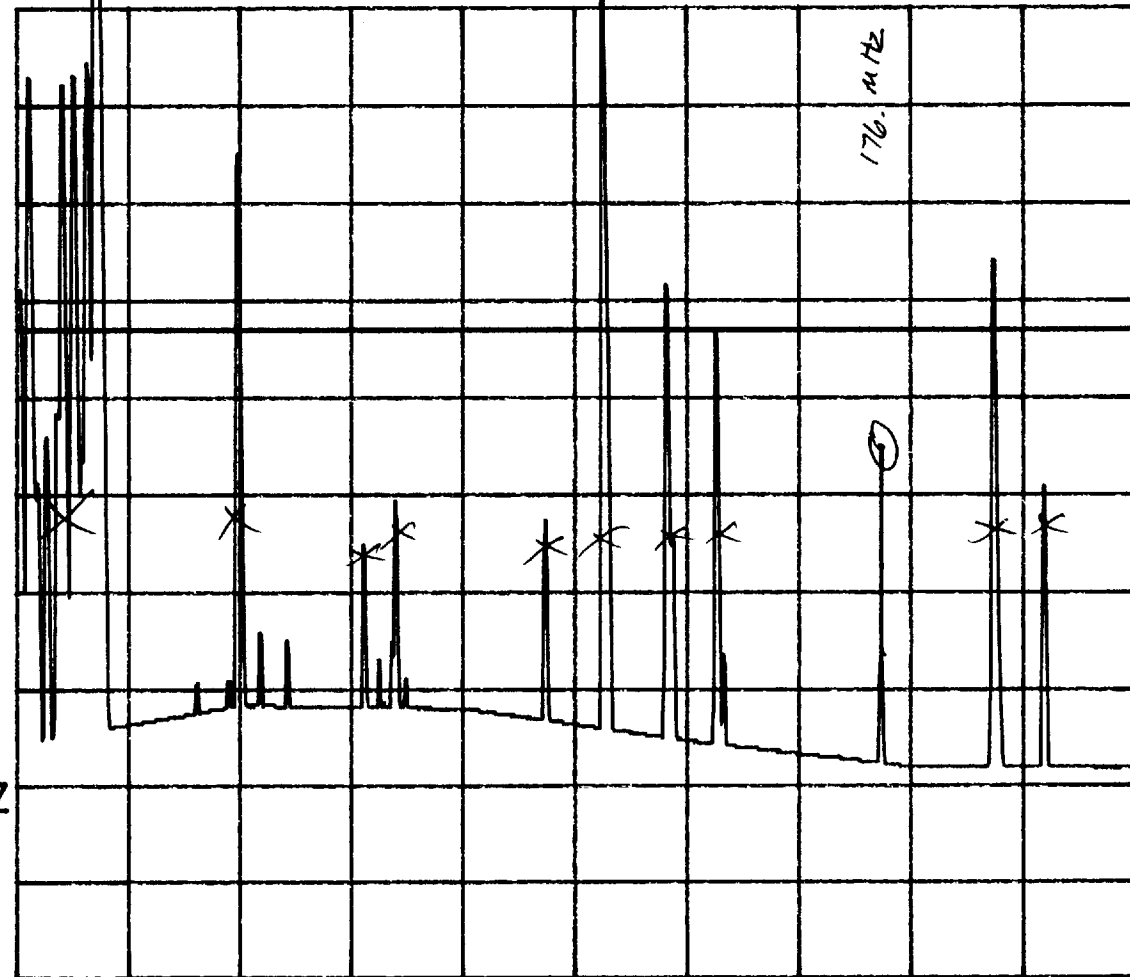
TESTER: *[Signature]*

REF 70.0 dB μ V/m
5dB/

ATT 0 dB

A_write B_blank

RBW
120 kHz
VBW
1 MHz
SWP
500 s



START 100.0 MHz

STOP 200.0 MHz



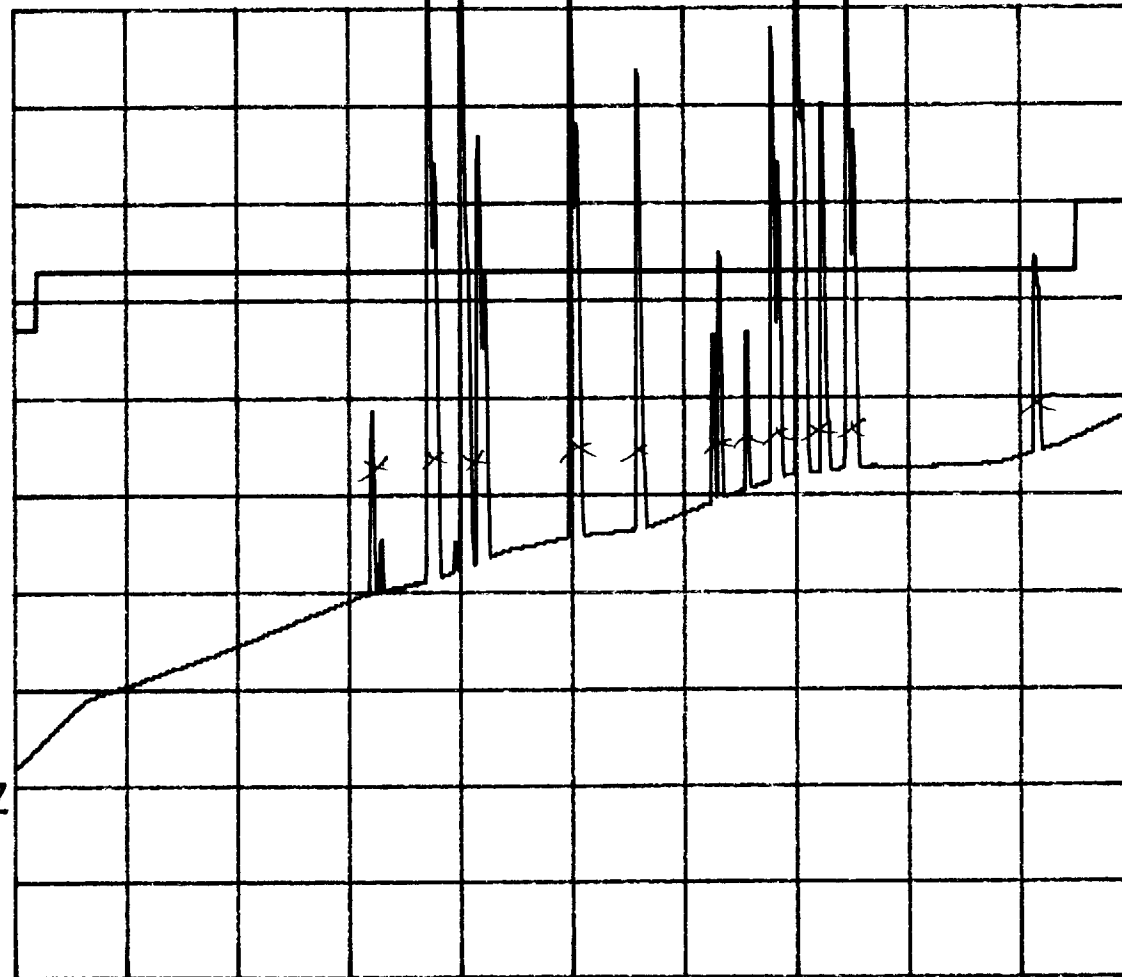
| | | |
|----------------------|---------------------------|----------------------|
| TEST: FCC RADIATED | EUT: AIRSITE REMOTE RADIO | S/N: B85ARE510 |
| FREQ: 200M-1GHz | SPEC: FCC CLASS A | ANT.HT/POL: 1.25m\ H |
| DETECTOR: QUASI PEAK | LINE UNDER TEST: N/A | EUT POSITION: 180° |
| DATE: 1-12-99 | TEST SITE: 3 METER | TESTER: <i>AB</i> |

REF 70.0 dB μ V/m
5dB/

ATT 0 dB

A_write B_blank

RBW
120 kHz
VBW
1 MHz
SWP
500 s



START 200.0 MHz

STOP 1.0000 GHz



TEST: FCC RADIATED

EUT: AIRSITE REMOTE RADIO

S/N: B85ARE510

FREQ: 200M-1GHZ

SPEC: FCC CLASS A

ANT.HT/POL: 1.25u V

DETECTOR: QUASI PEAK

LINE UNDER TEST: N/A

EUT POSITION: 180°

DATE: 1-12-99

TEST SITE: 3 METER

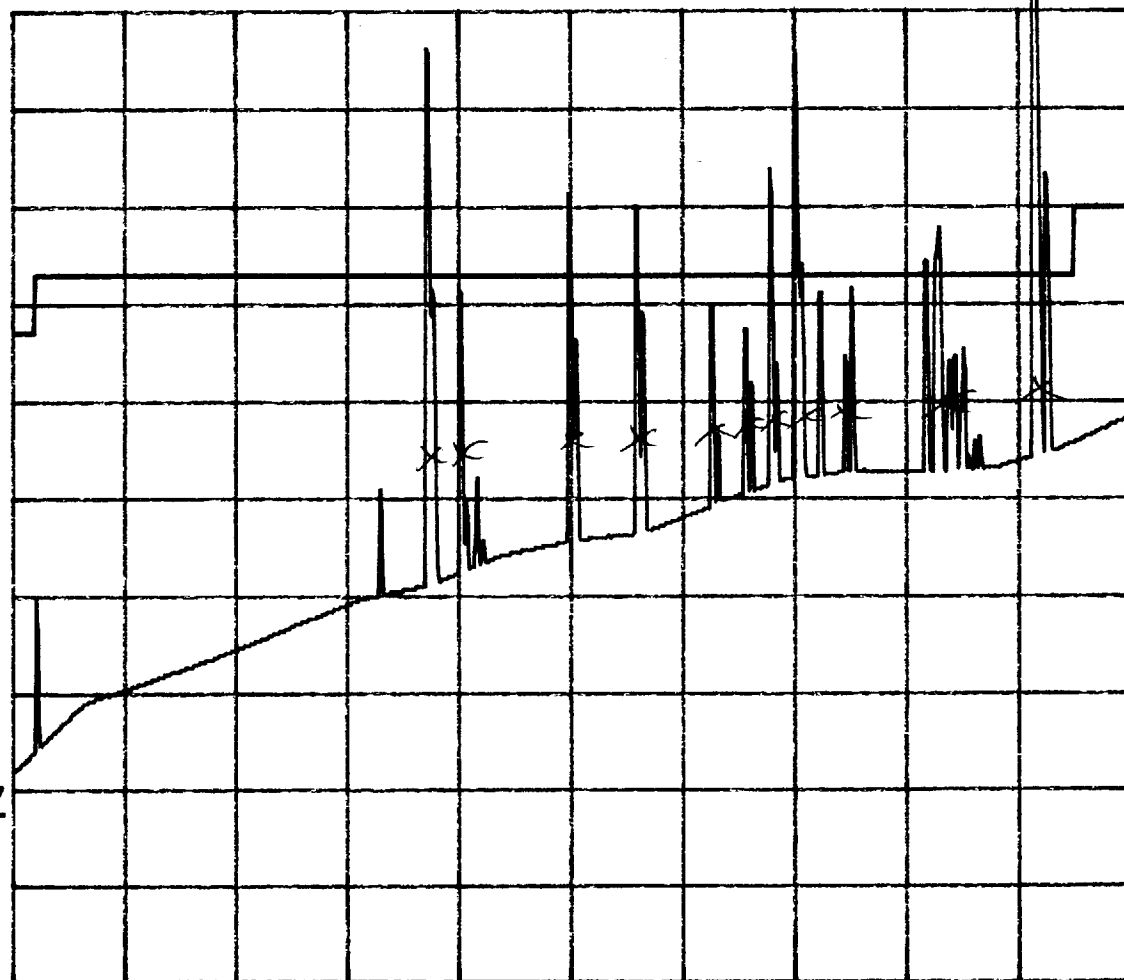
TESTER: *AB*

REF 70.0 dB μ V/m
5dB/

ATT 0 dB

A_write B_blank

RBW
120 kHz
VBW
1 MHz
SWP
500 s



START 200.0 MHz

STOP 1.0000 GHz



TEST: FCC RADIATED

EUT: AIRSITE REMOTE RADIO

S/N: B85ARE510

FREQ: 1G-8GHz

SPEC: FCC PART 24

ANT.HT/POL: 1.25m \ H

DETECT: PEAK

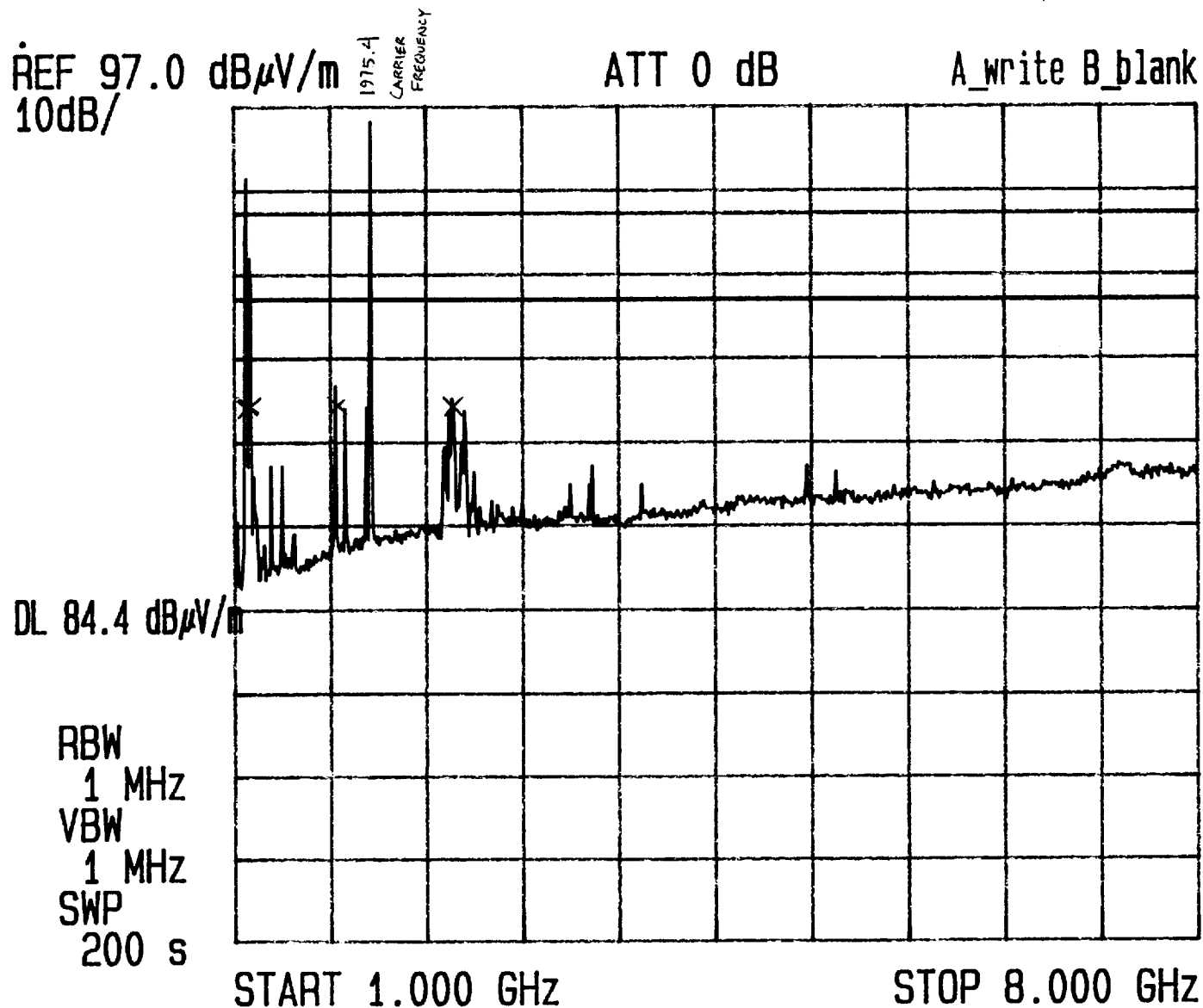
ANTENNA: N/A

EUT POSITION: 180°

DATE: 1-12-99

TEST SITE: 3 METER

TESTER: *AB*





TEST: FCC RADIATED

EUT: AIRSITE REMOTE RADIO

S/N: B85ARE510

FREQ: 1G-8GHz

SPEC: FCC PART 24

ANT.HT/POL: 1.25m V

DETECT: PEAK

ANTENNA: N/A

EUT POSITION: 180°

DATE: 1-12-99

TEST SITE: 3 METER

TESTER: AB

REF 97.0 dB μ V/m
10dB/

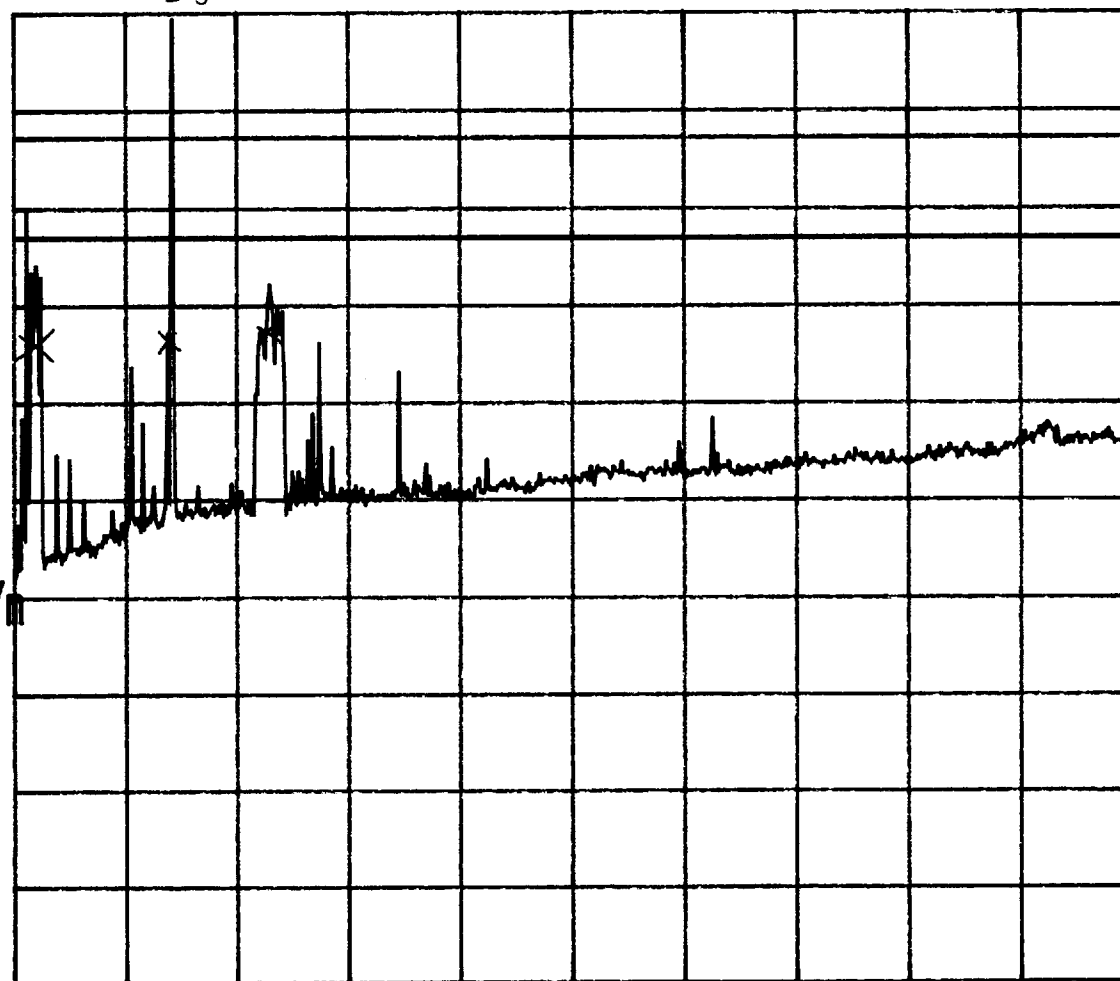
1915.4 MHz
CARRIER

ATT 0 dB

A_write B_blank

DL 84.4 dB μ V/m

RBW
1 MHz
VBW
1 MHz
SWP
200 s

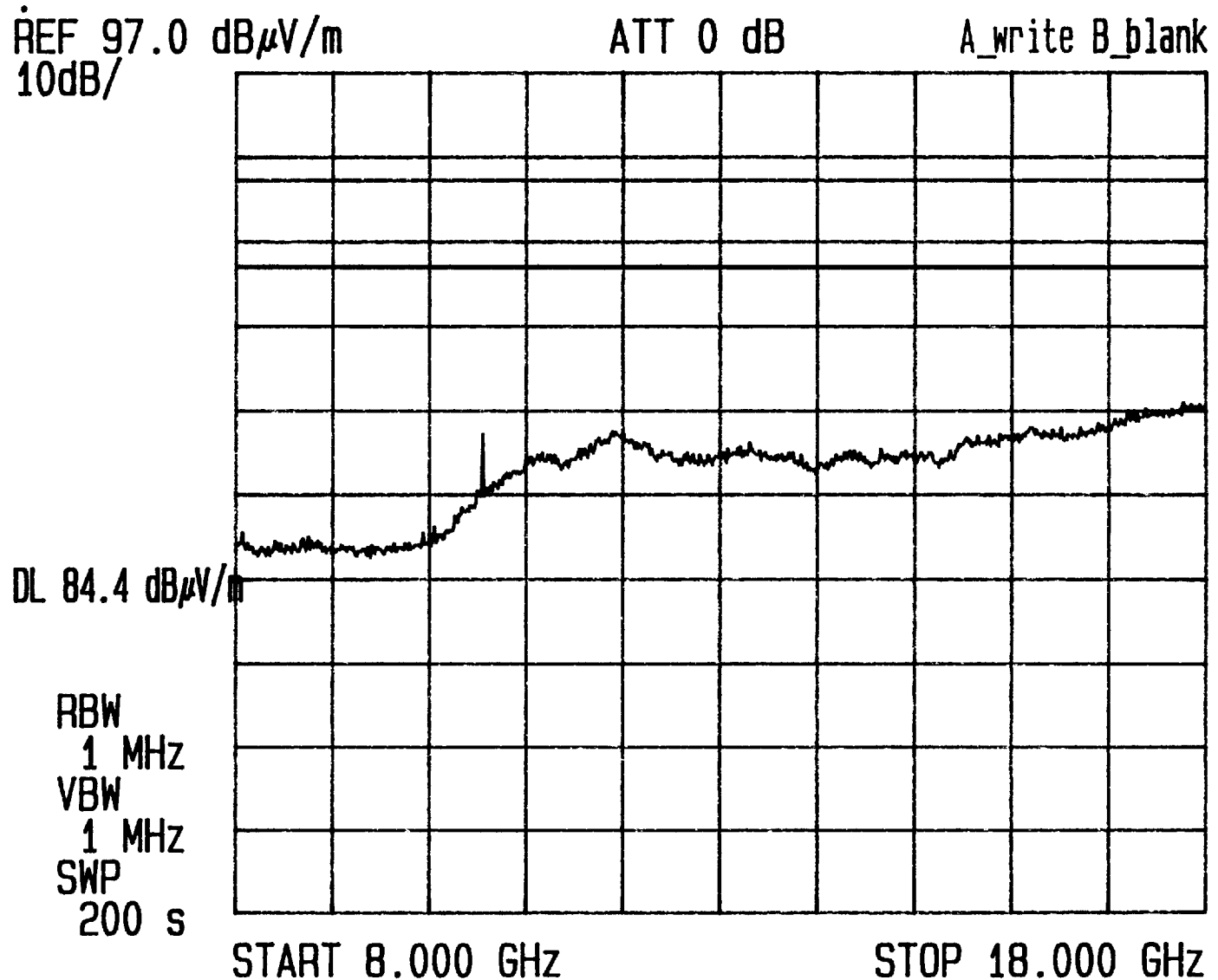


START 1.000 GHz

STOP 8.000 GHz



| | | |
|--------------------|---------------------------|-----------------------|
| TEST: FCC RADIATED | EUT: AIRSITE REMOTE RADIO | S/N: B85ARE510 |
| FREQ: 8G-18GHz | SPEC: FCC PART 24 | ANT.HT/POL: 1.25m H |
| DETECT: PEAK | ANTENNA: N/A | EUT POSITION: 180° |
| DATE: 1-12-99 | TEST SITE: 3 METER | TESTER: AB |





| | | |
|--------------------|---------------------------|----------------|
| TEST: FCC RADIATED | EUT: AIRSITE REMOTE RADIO | S/N: B85ARE510 |
| FREQ: 8G-18GHz | SPEC: FCC PART 24 | ANT.HT/POL: V |
| DETECT: PEAK | ANTENNA: N/A | EUT POSITION: |
| DATE: 1-12-99 | TEST SITE: 3 METER | TESTER: |

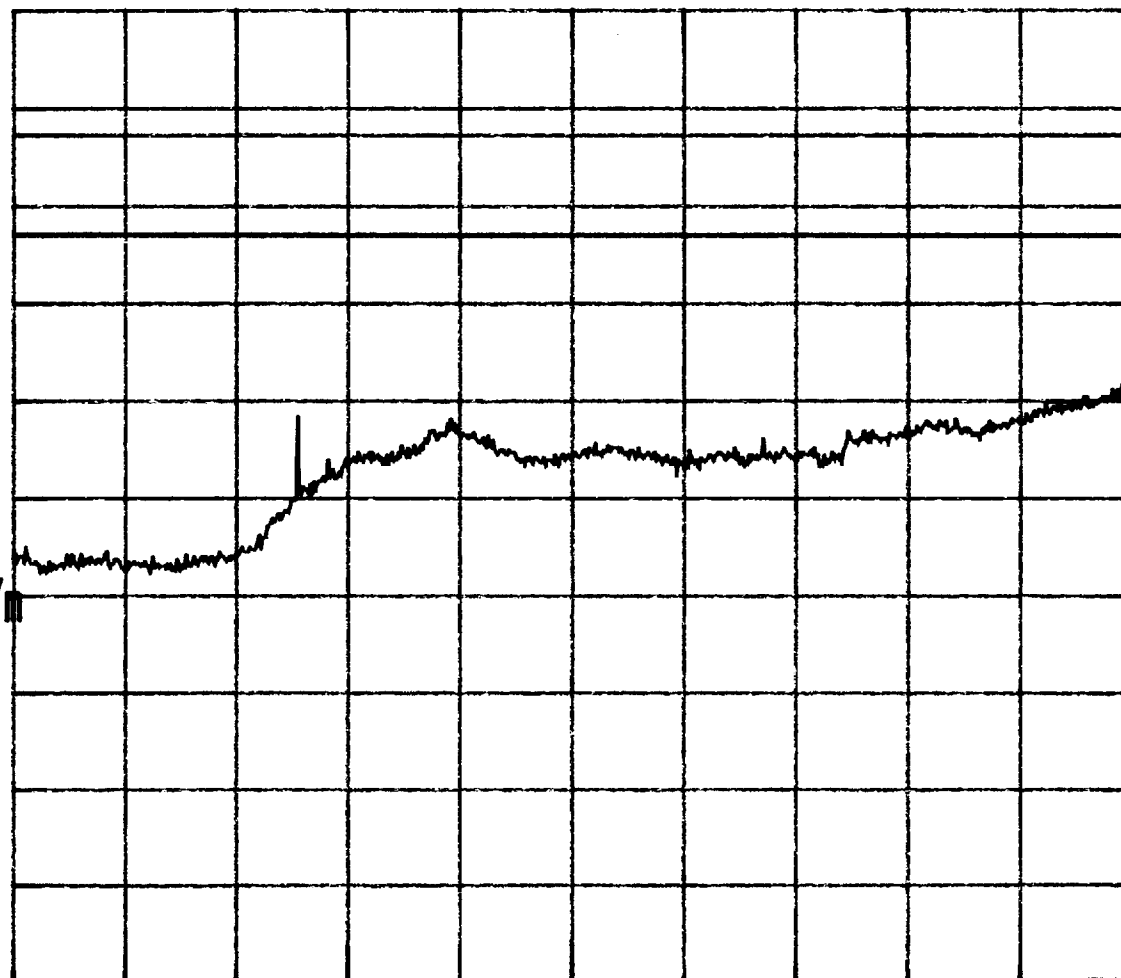
REF 97.0 dB μ V/m
10dB/

ATT 0 dB

A_write B_blank

DL 84.4 dB μ V/m

RBW
1 MHz
VBW
1 MHz
SWP
200 s



START 8.000 GHz

STOP 18.000 GHz



TEST: FCC RADIATED
FREQ: 18G-20GHz
DETECT: PEAK
DATE: 1-12-99

EUT: AIRSITE REMOTE RADIO
SPEC: FCC PART 24
ANTENNA: N/A
TEST SITE: 3 METER

S/N: B85ARE510
ANT.HT/POL: 1.25m \H
EUT POSITION: 180°
TESTER: AB

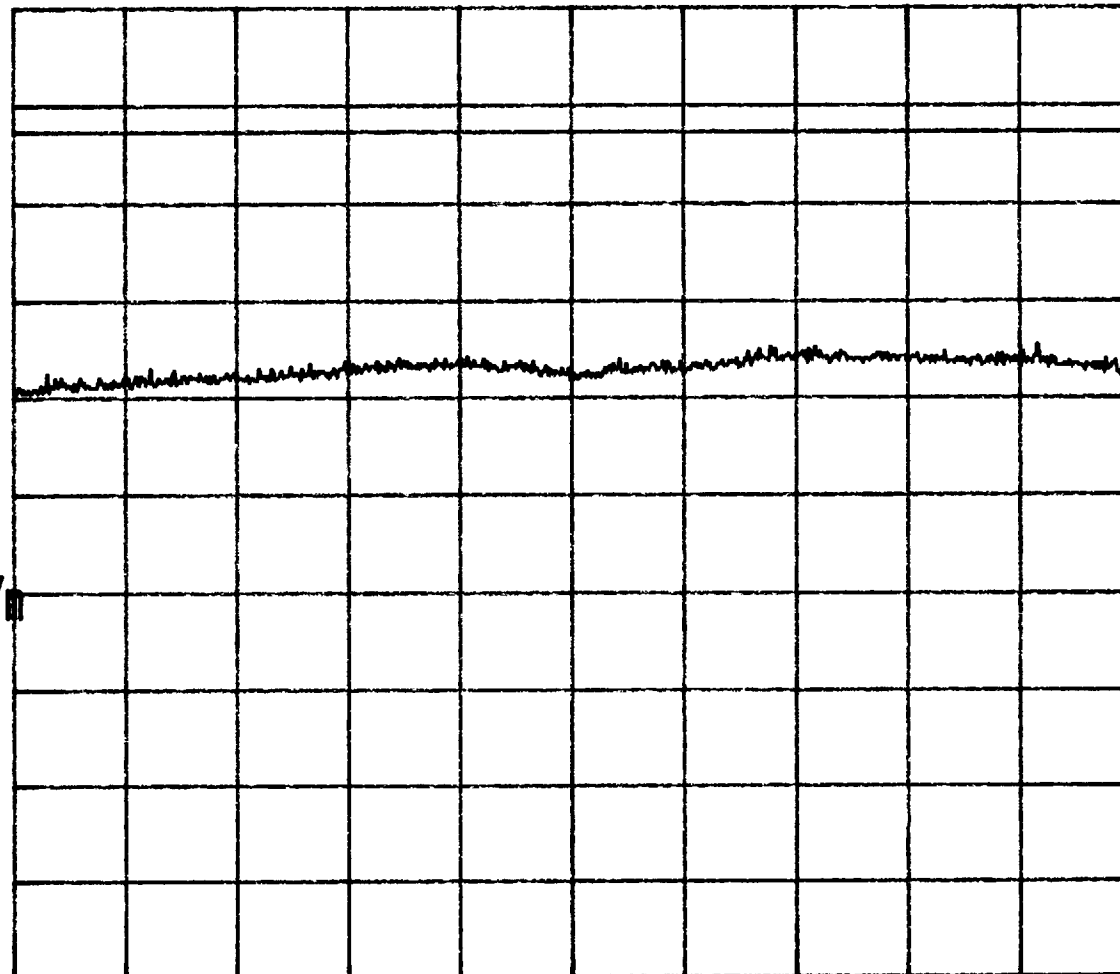
REF 97.0 dB μ V/m
10dB/

ATT 0 dB

A_write B_blank

DL 84.4 dB μ V/m

RBW
1 MHz
VBW
1 MHz
SWP
100 s



START 18.000 GHz

STOP 20.000 GHz



TEST: FCC RADIATED

EUT: AIRSITE REMOTE RADIO

S/N: B85ARE510

FREQ: 18G-20GHz

SPEC: FCC PART 24

ANT.HT/POL: 1.25m V

DETECT: PEAK

ANTENNA: N/A

EUT POSITION: 180°

DATE: 1-12-99

TEST SITE: 3 METER

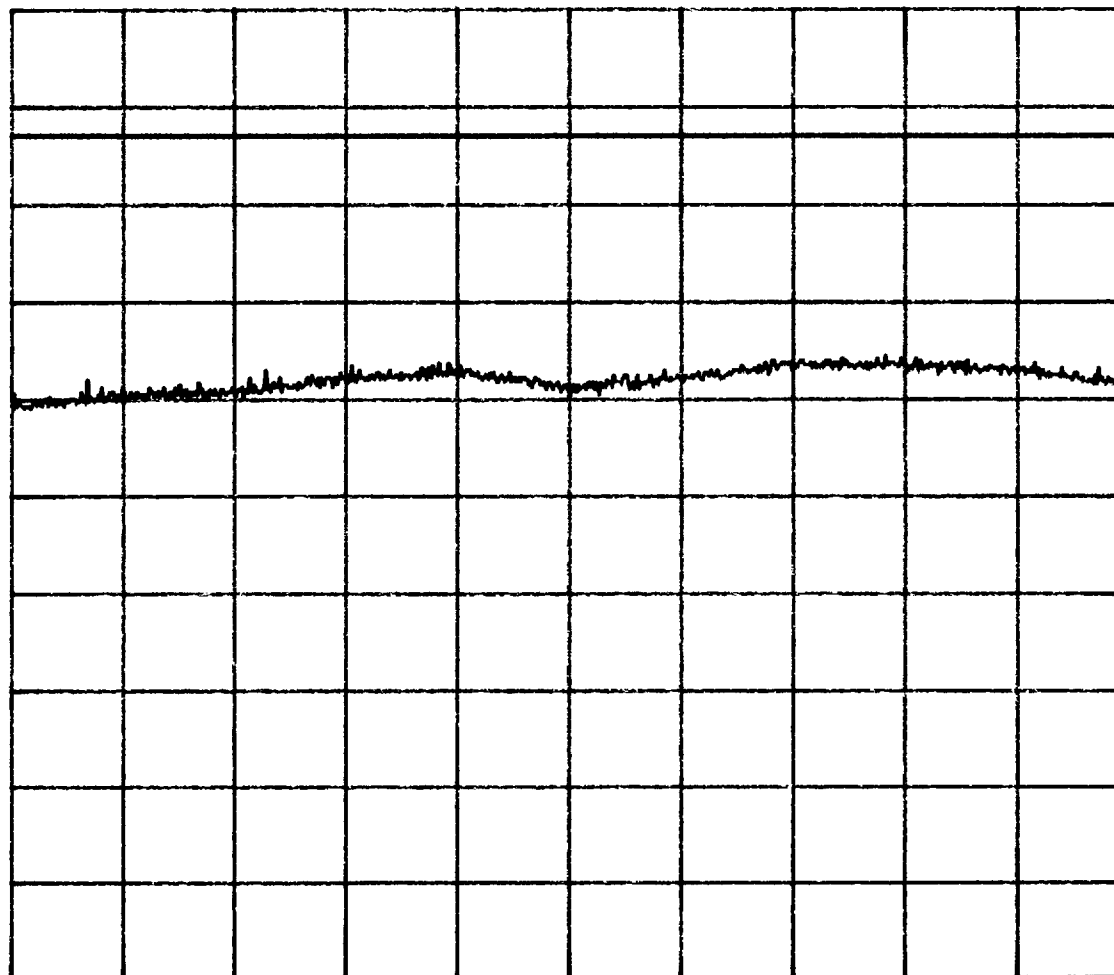
TESTER: *MB*

REF 97.0 dB μ V/m
10dB/

ATT 0 dB

A_write B_blank

RBW
1 MHz
VBW
1 MHz
SWP
100 s



START 18.000 GHz

STOP 20.000 GHz