

Child-proof catches

Child-proof catches on the rear doors

The child-proof catches prevent the rear doors being opened from the inside.

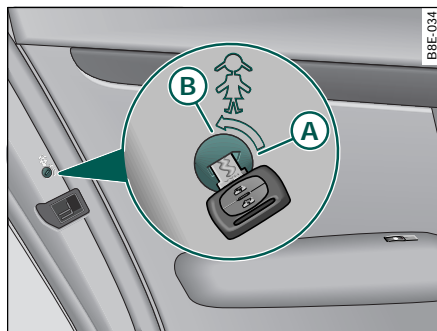


Fig. 38 Child-proof catches on the rear doors

The rear doors are equipped with child-proof catches. They can be operated using the ignition key.

Engaging the child-proof catch

- Turn the slot in the child-proof catch anti-clockwise ⇒ fig. 38 **(B)**.

Disengaging the child-proof catch

- Turn the slot in the child-proof catch clockwise **(A)**.

When the child-proof catch is engaged, the inside door handle will not function, and the door can only be opened from the outside. ■

Remote control

Description

The radio-operated remote control will lock and unlock the vehicle without having to insert the key in the lock.

The following functions are available:

- Lock and unlock the vehicle
- Unlock the boot lid

All the turn signals will flash when the vehicle is locked or unlocked. In addition, the interior lights will automatically light up when the vehicle is unlocked and go out when the vehicle is locked, provided that the switch is in the courtesy light position.

The remote control transmitter and the battery are integrated in the handle of the key. The receiver is in the interior of the vehicle. The maximum range of the remote control depends on various conditions. The range is reduced when the battery starts to lose power.

The remote control incorporates a foldaway key that can be used to manually lock or unlock the vehicle and to start the engine.

If a lost key has to be replaced, or if the receiver is repaired or replaced, the system must be initialised by an Audi dealer before the remote control will operate again.

The radio-operated remote control conforms with all relevant requirements for Germany and has been approved by the Federal Approvals Office for Telecommunications of the Federal Republic Of ►

Germany. All components are marked in accordance with the current legal requirements. This official certification forms the basis for obtaining approval for use in other countries.

Note

- The remote control is automatically deactivated when the ignition is switched on.
- The function of the remote control may be temporarily impaired by interference from other radio signals (for example from a mobile telephone or TV transmitter) if these are in the same frequency range and close to the vehicle. ■

Applies to vehicles with remote control

Locking and and unlocking the vehicle

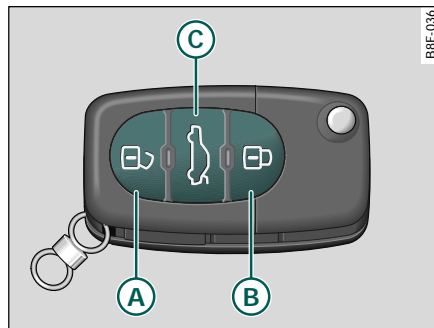


Fig. 39 Remote control key: control buttons

Unlocking the vehicle

- Press button ⇒ fig. 39 **A** for about one second.

Locking the vehicle

- Press button **B** for about one second.

Opening the boot lid

- Press button **C** and hold for at least one second.

The turn signals will flash twice as confirmation when you unlock the car. The vehicle will be locked again automatically if you do not open one of the doors or the boot lid within 60 seconds after unlocking the car with button **A**. This function prevents the vehicle from remaining unlocked if the unlocking button is pressed by mistake.

On vehicles with the **security central locking** feature, you can unlock just the driver's door and the tank flap by pressing button **A** once, or the whole vehicle by pressing the button twice.

The turn signals flash once when the vehicle is locked to confirm that the doors and boot lid are properly locked. On vehicles equipped with anti-theft alarm* the system also checks that the tank flap has been properly closed and locked.

When the car is unlocked, the driver's seat and the exterior mirrors will be automatically adjusted to the positions stored in the seat memory* for the key which is being used.

The interior lights will automatically light up when the vehicle is unlocked and go out when the vehicle is locked, provided that the switch is in the courtesy light position. ►

CONTROLS AND EQUIPMENT

● Certification

The remote control device complies with Part 15 of the FCC Rules. Operation is subject to the following conditions:

- 1 - this device may not cause harmful interference, and
- 2 - this device must accept any interference received, including interference that may cause undesired operation.

The manufacturer is not responsible for ANY RADIO OR TV Interference caused by unauthorized modifications to this equipment. Such modifications could void the user's authority to operate the equipment.

Anti-theft alarm system

The anti-theft alarm system triggers an acoustic alarm and switches on the emergency flasher if it senses unauthorized interference with the vehicle.

When the vehicle is locked the alarm system monitors and protects the following parts of the vehicle:

- engine compartment
- luggage compartment
- doors
- factory installed radio
- passenger compartment
- ignition.

The alarm system is switched on or off whenever you lock or unlock the vehicle. Simply turn the key to the lock or unlock position or use the remote control.

The system is activated about 30 seconds after the vehicle is locked, and the indicator lights on the front door window sills start flashing.

The horn sounds briefly when the car is locked to confirm that the alarm system is operative and that all doors, hood and rear lid are properly closed. If the horn does not sound, or the indicator lights do not flash, check all doors, rear lid and hood and close them properly. The horn will also sound if the door, lid and hood are closed when the system is already switched on.

The rear lid can be opened separately even when the system is active. When the rear lid is closed the luggage compartment will again be included in the alarm circuit.

When the system is switched on the alarm will be triggered if one of the doors, the engine hood or the rear lid are opened, or if the ignition is switched on or the radio removed.

When the alarm is triggered the horn sounds and all four turn signals flash simultaneously. The engine cannot be started until the system is switched off with the key or the remote control.