

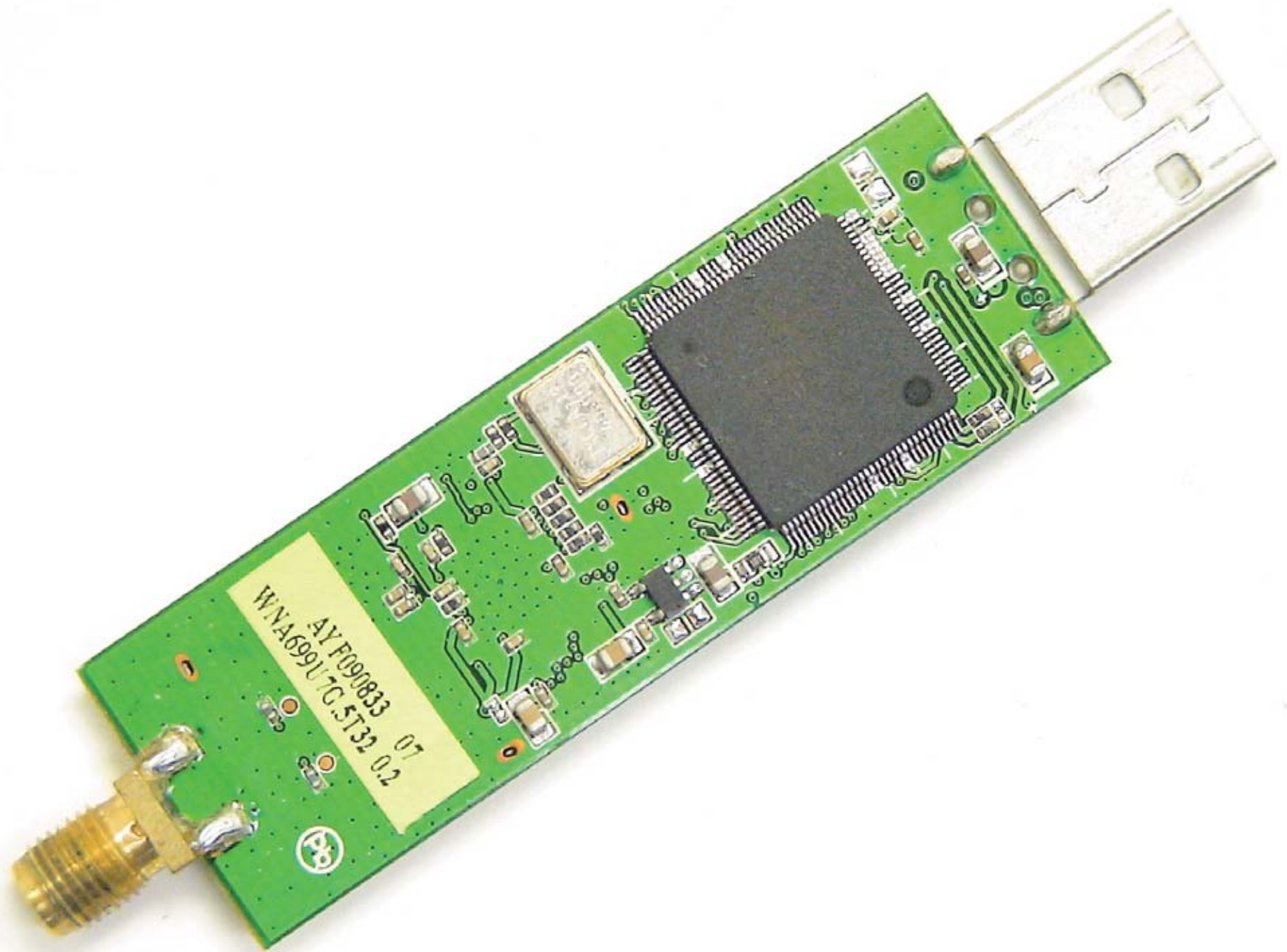
Radio apart (top)



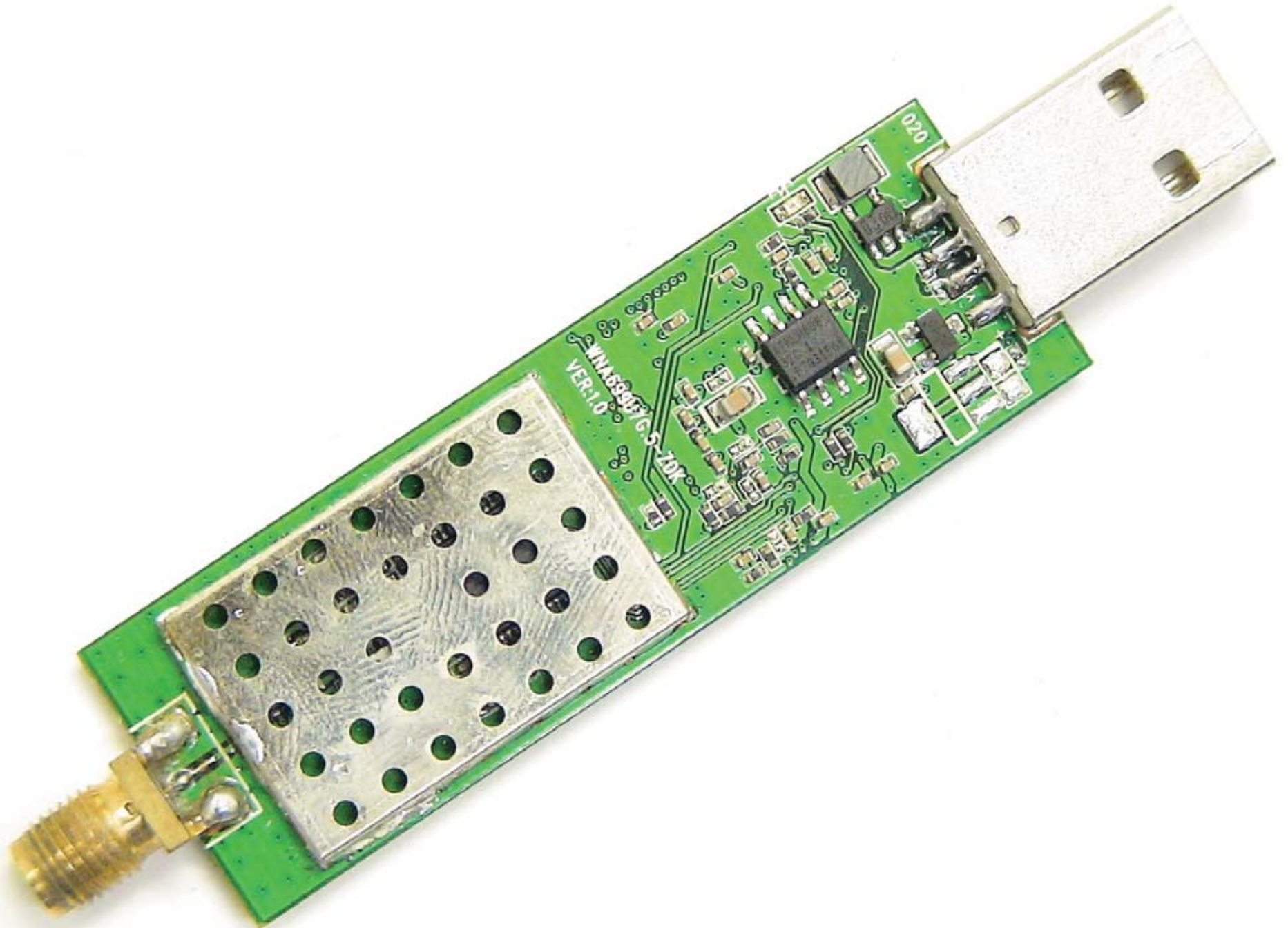
Radio apart (bottom)



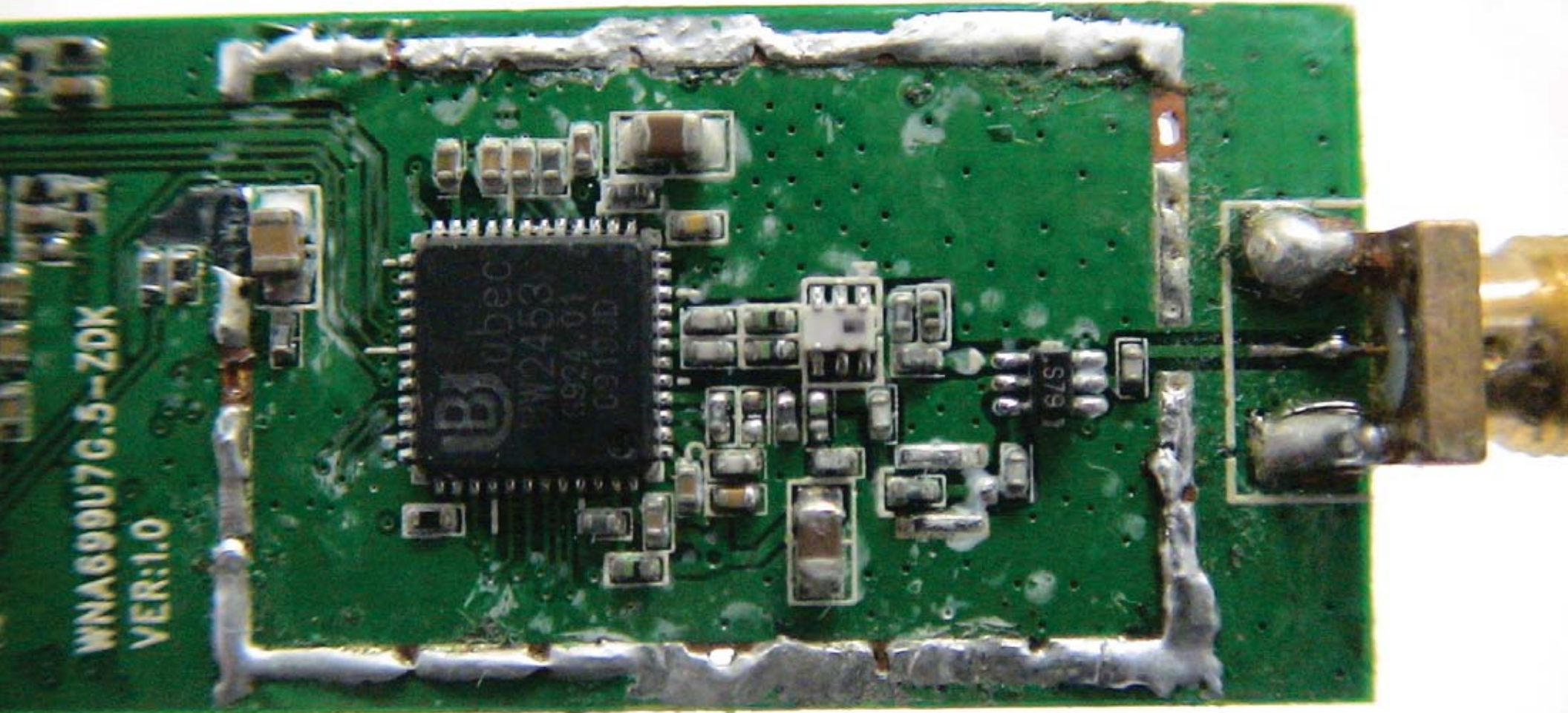
Radio PCB (top)



Radio PCB (bottom)



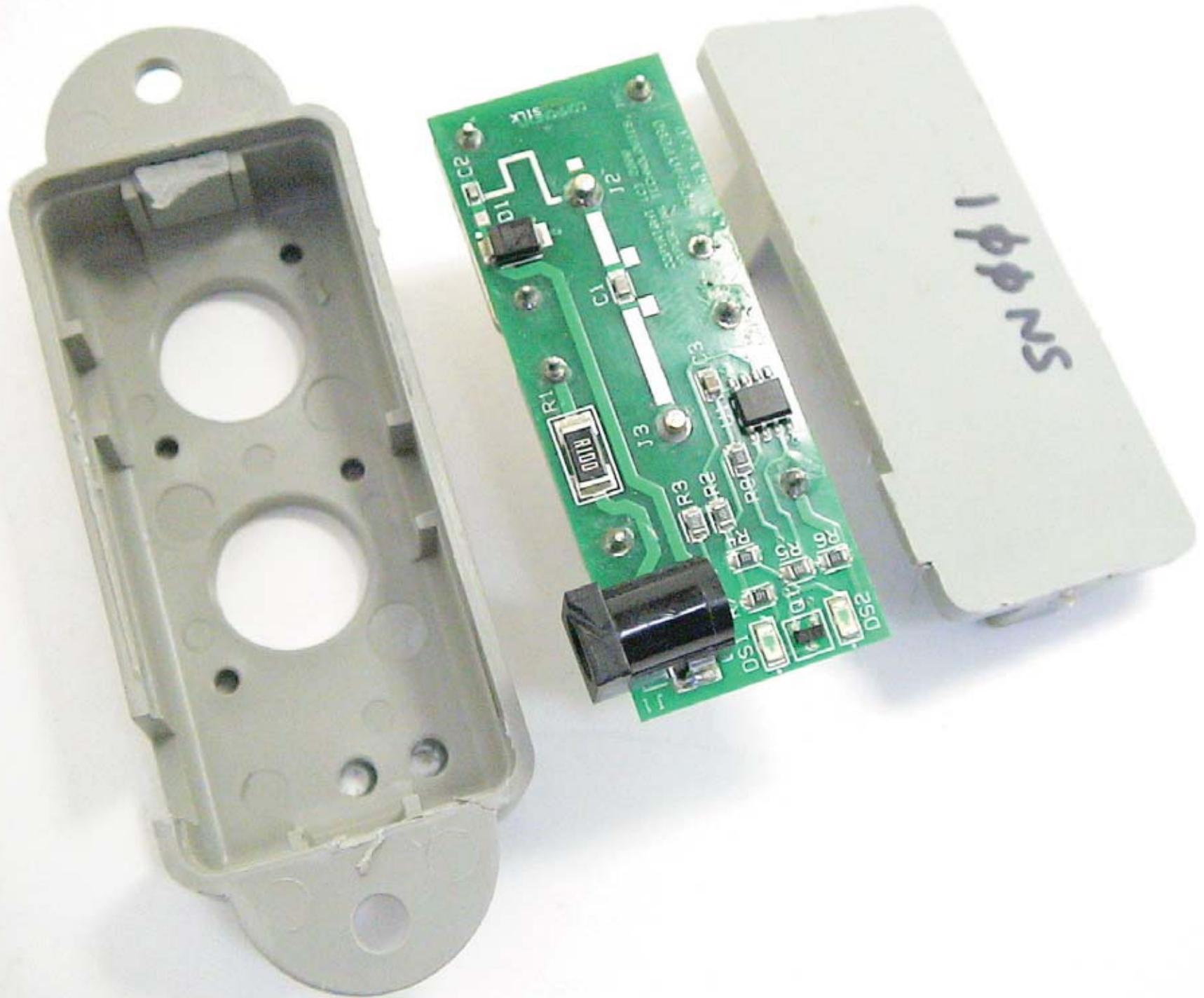
Radio PCB (can removed)

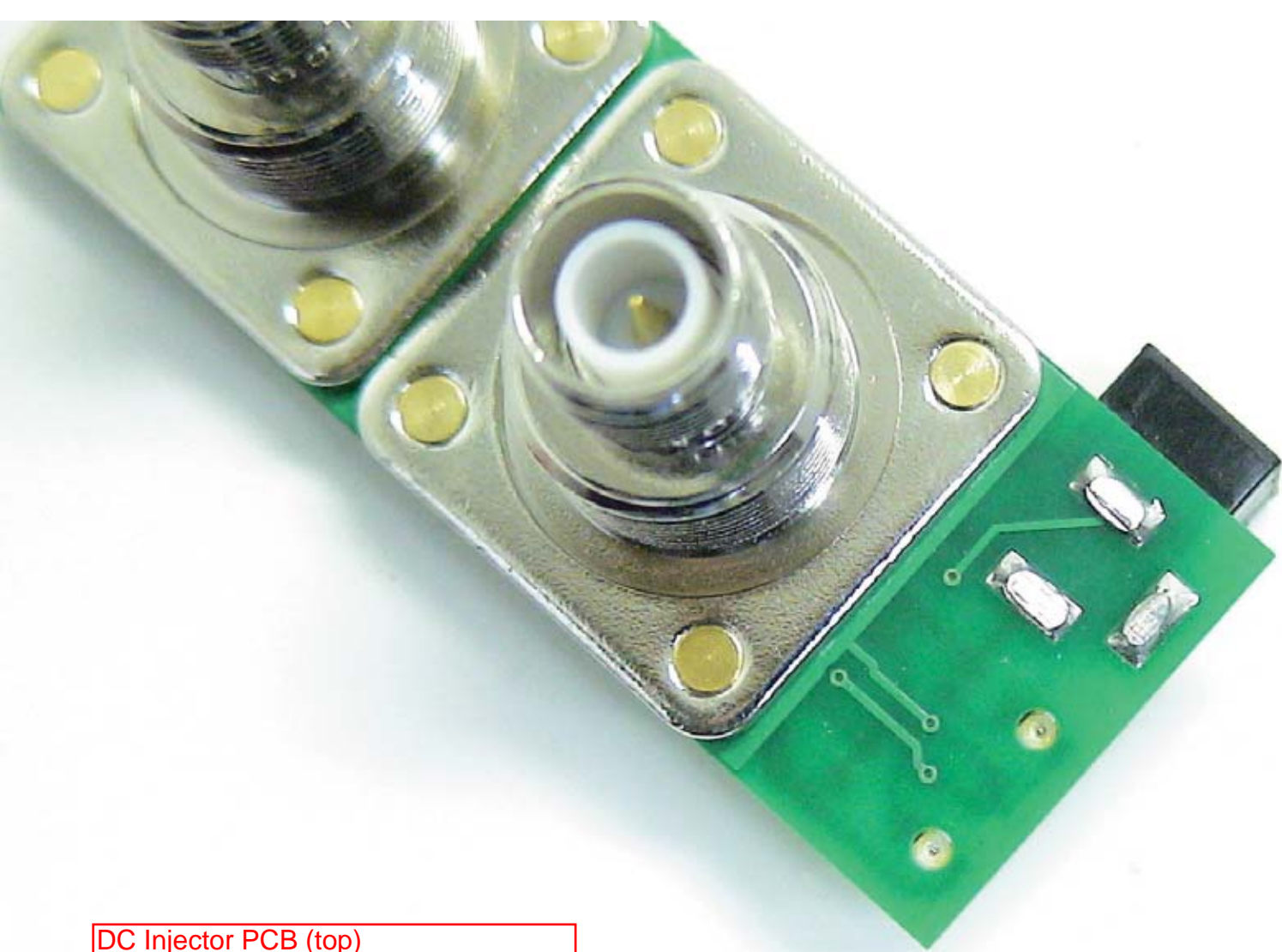


DC Injector apart (top)



DC Injector apart (bottom)

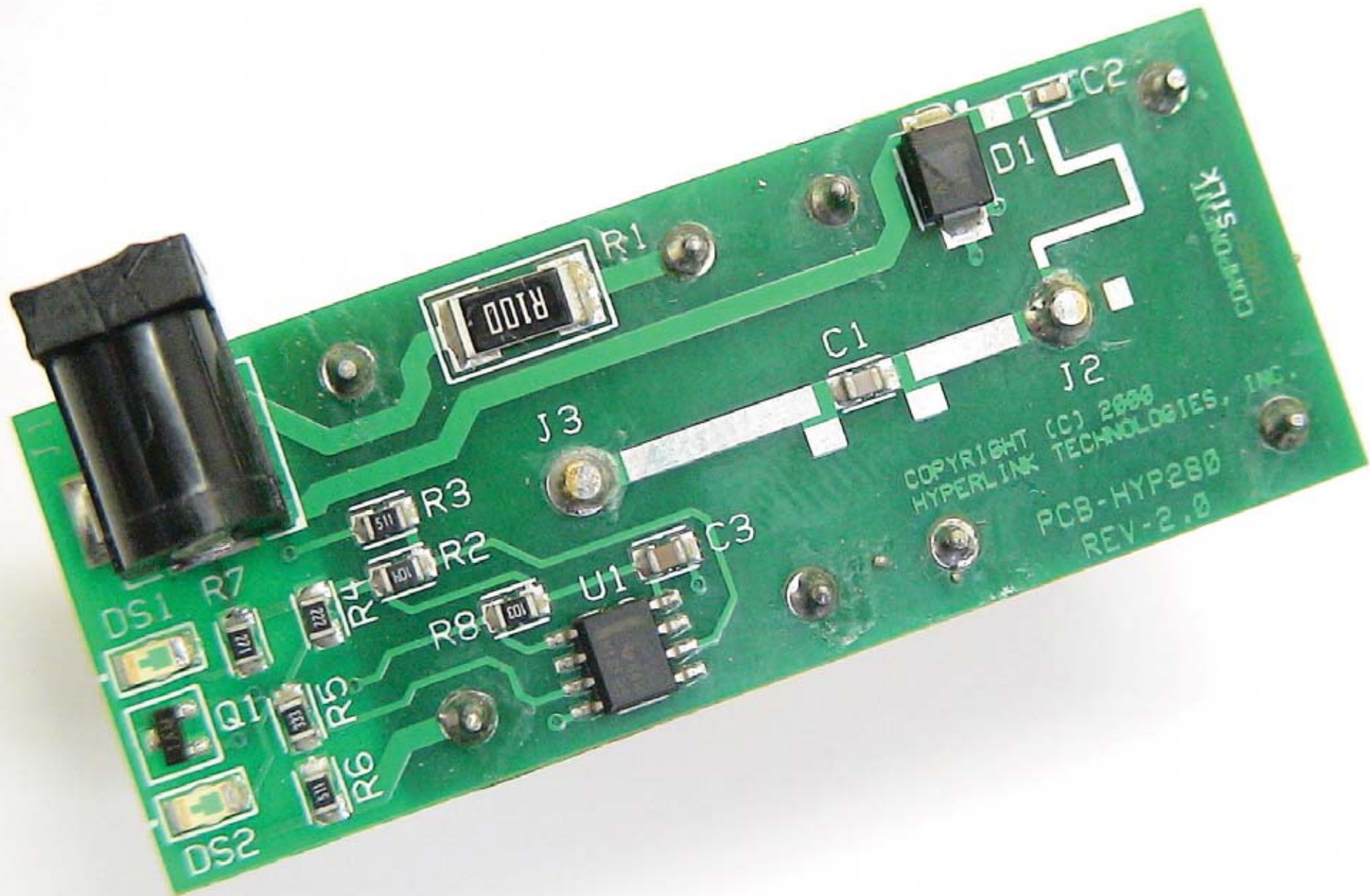




DC Injector PCB (top)



DC Injector PCB (bottom)



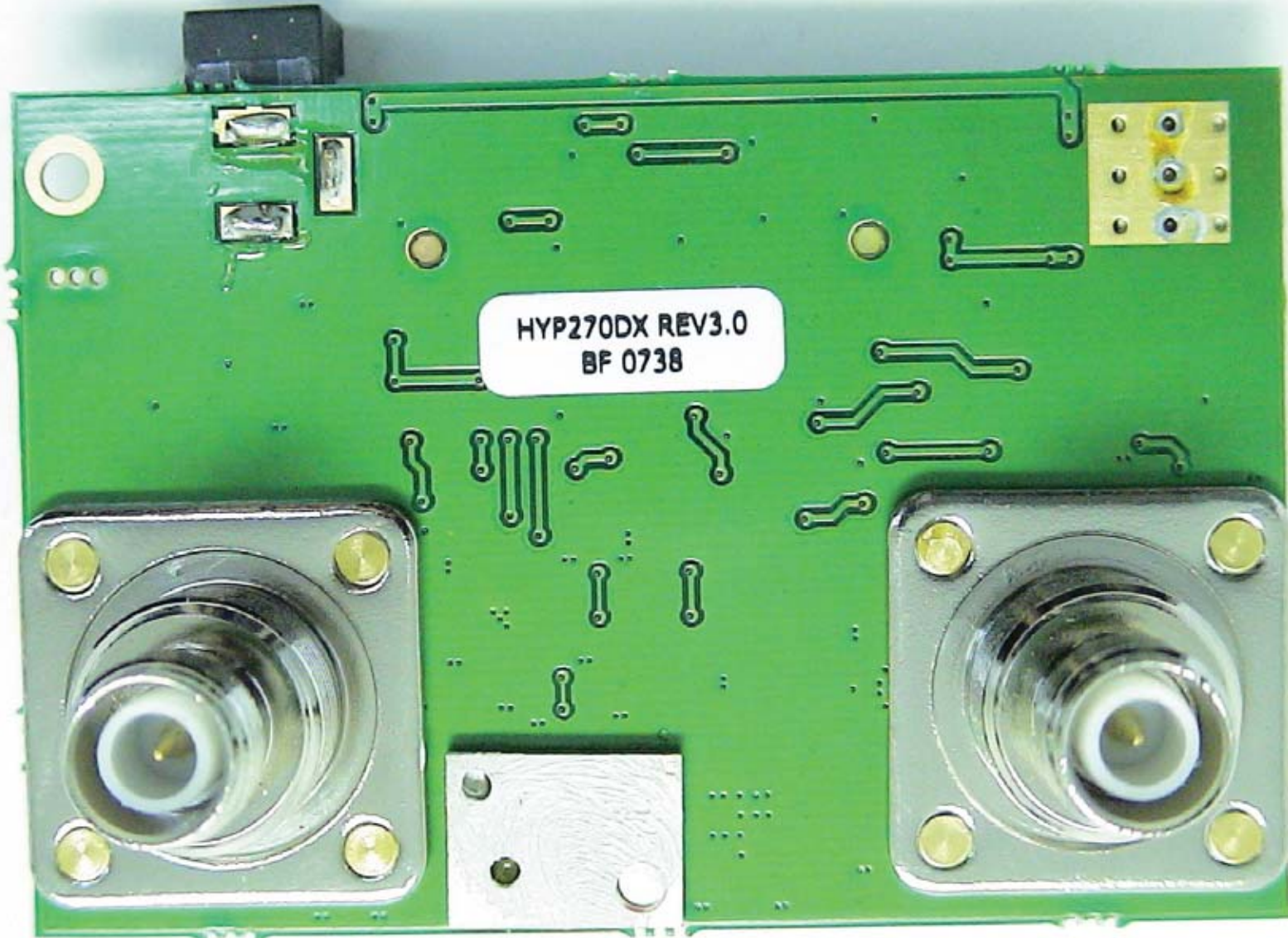
Indoor Amp (top)



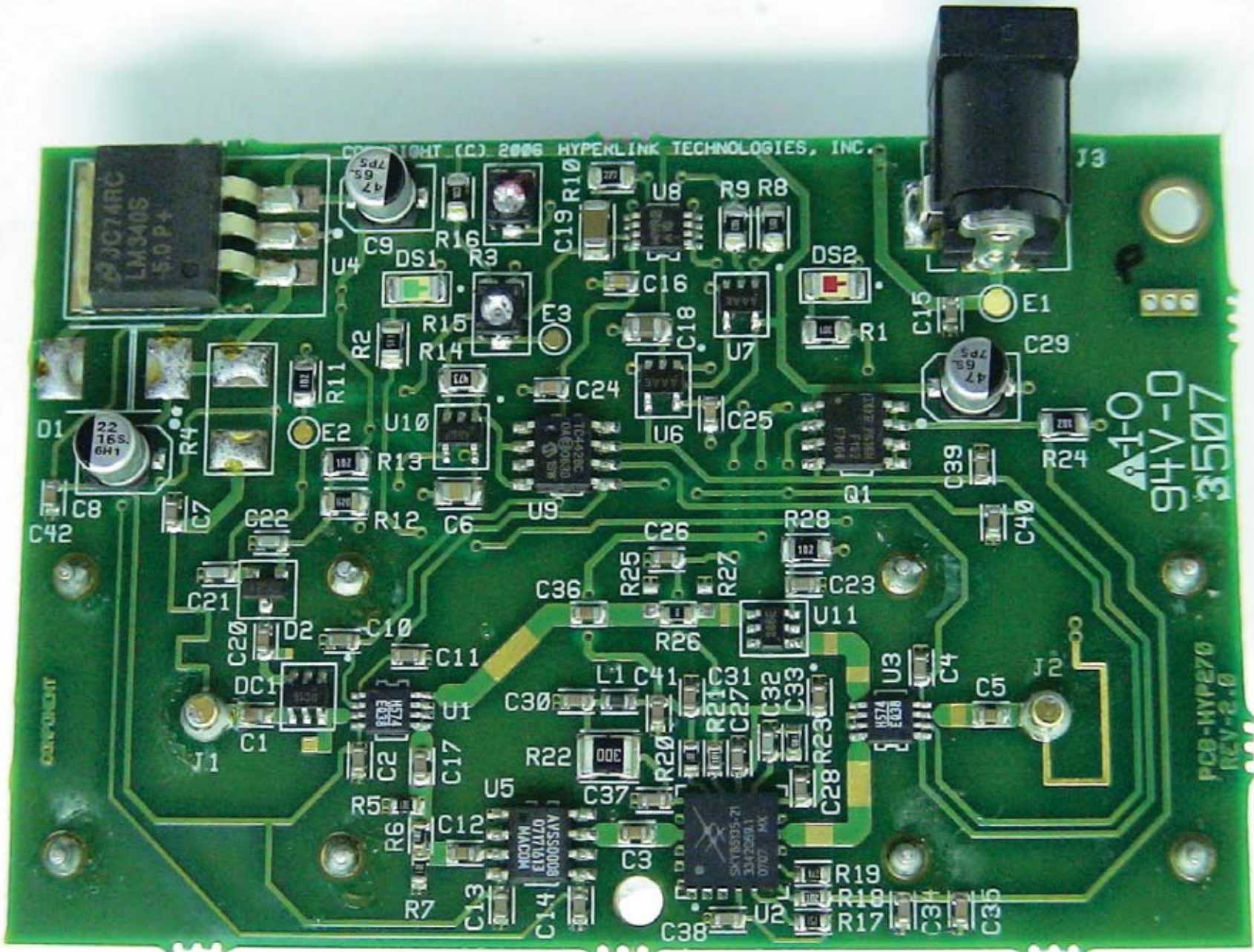
Indoor Amp (bottom)



Indoor Amp PCB (top)



Indoor Amp PCB (bottom)



COMPONENT

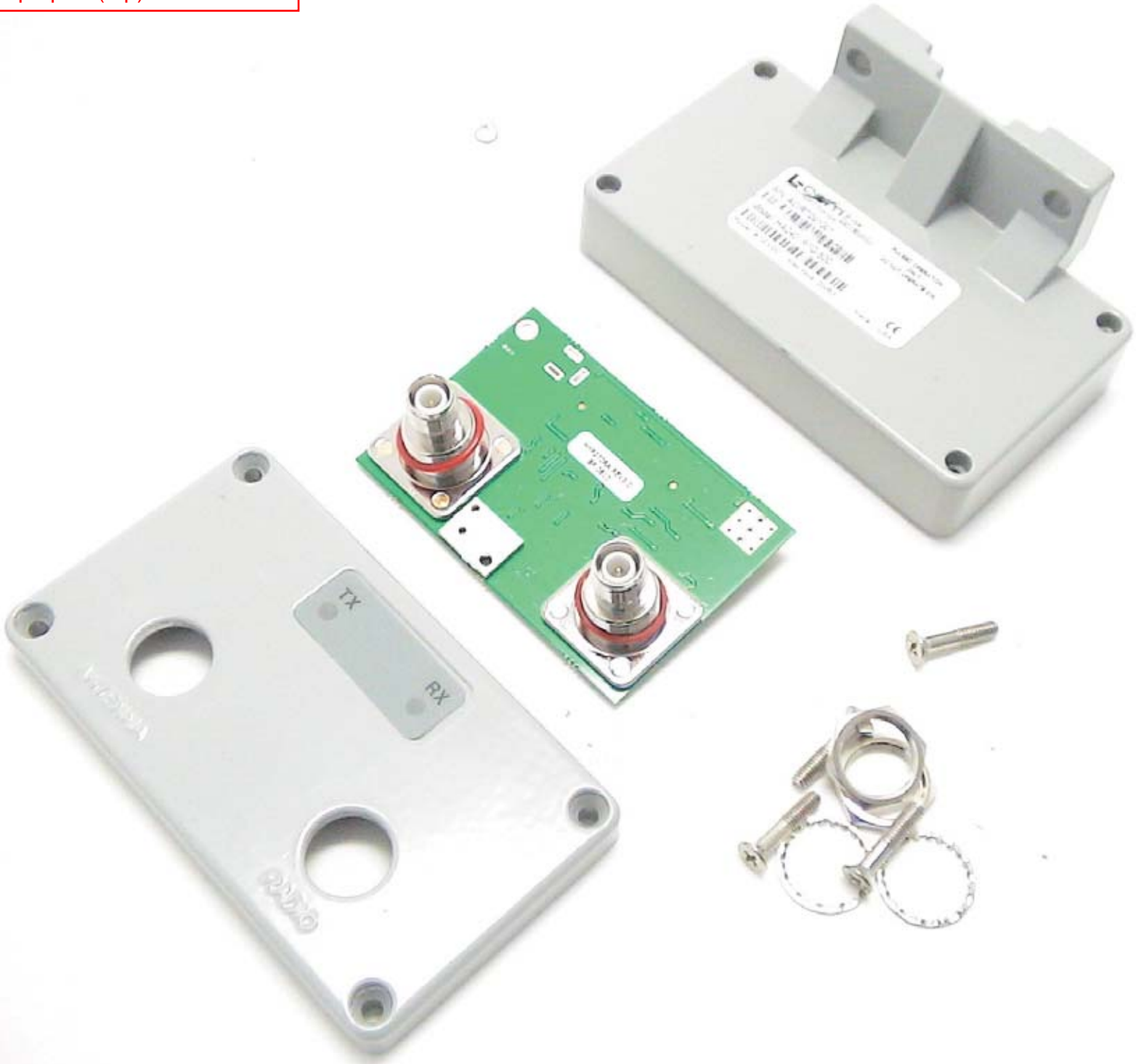
COPYRIGHT (C) 2006 HYPERLINK TECHNOLOGIES, INC.

9+V-0  
3507

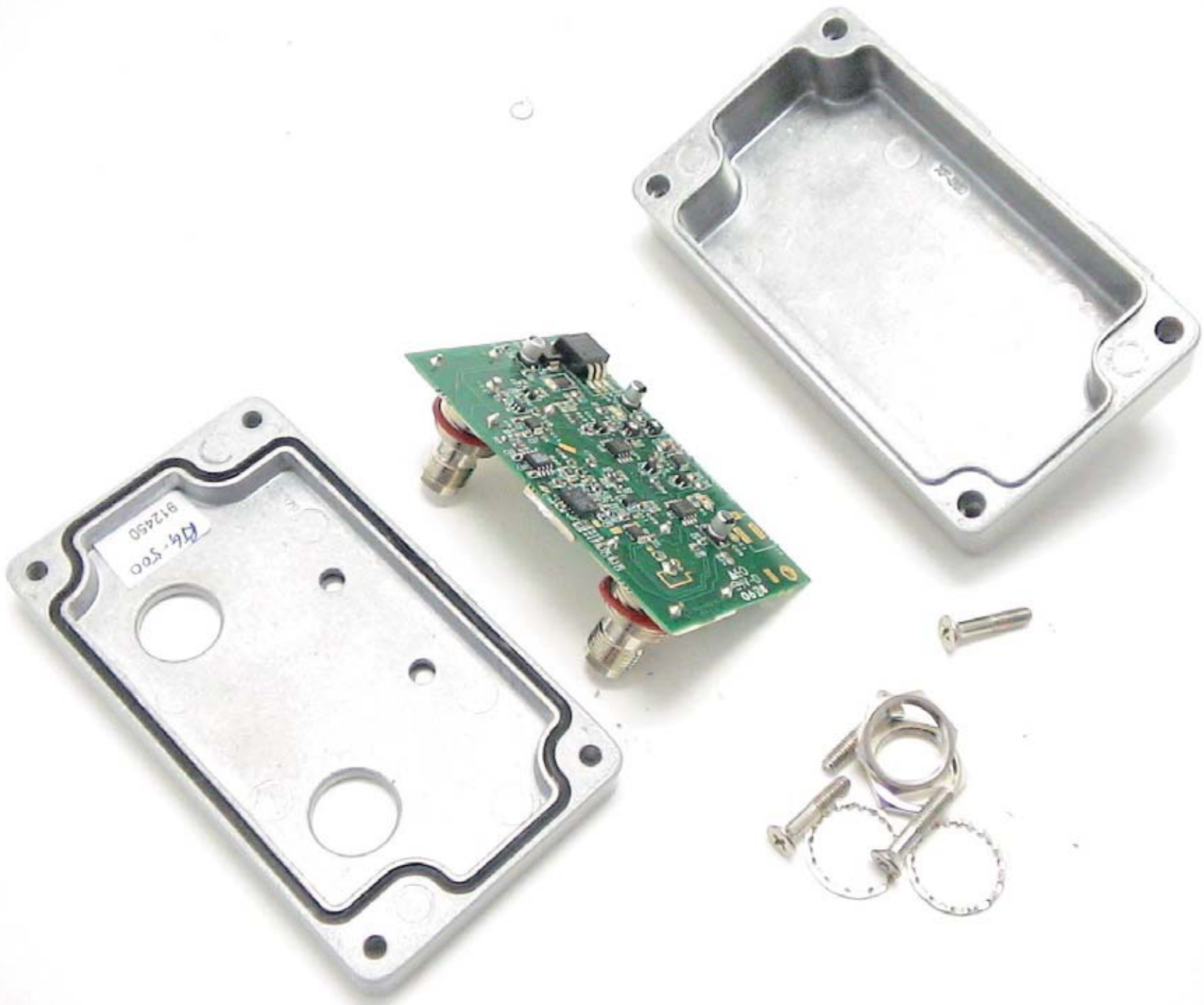
PCB-HYPE270  
REV-2.0

U1: A55S0008 07171A3 M4CDM  
U2: SKY18335-21 334225013 0702 MA  
U3: U574 E038  
U4: 3C74RC LM340S 5.0P+  
U5: 1.0V  
U6: 0.9V  
U7: 0.8V  
U8: 0.7V  
U9: 0.6V  
U10: 0.5V  
U11: 0.4V  
U12: 0.3V  
U13: 0.2V  
U14: 0.1V  
U15: 0.05V  
U16: 0.02V  
U17: 0.01V  
U18: 0.005V  
U19: 0.002V  
U20: 0.001V  
U21: 0.0005V  
U22: 0.0002V  
U23: 0.0001V  
U24: 0.00005V  
U25: 0.00002V  
U26: 0.00001V  
U27: 0.000005V  
U28: 0.000002V  
U29: 0.000001V  
U30: 0.0000005V  
U31: 0.0000002V  
U32: 0.0000001V  
U33: 0.00000005V  
U34: 0.00000002V  
U35: 0.00000001V  
U36: 0.000000005V  
U37: 0.000000002V  
U38: 0.000000001V  
C1: 100nF  
C2: 100nF  
C3: 100nF  
C4: 100nF  
C5: 100nF  
C6: 100nF  
C7: 100nF  
C8: 100nF  
C9: 100nF  
C10: 100nF  
C11: 100nF  
C12: 100nF  
C13: 100nF  
C14: 100nF  
C15: 100nF  
C16: 100nF  
C17: 100nF  
C18: 100nF  
C19: 100nF  
C20: 100nF  
C21: 100nF  
C22: 100nF  
C23: 100nF  
C24: 100nF  
C25: 100nF  
C26: 100nF  
C27: 100nF  
C28: 100nF  
C29: 100nF  
C30: 100nF  
C31: 100nF  
C32: 100nF  
C33: 100nF  
C34: 100nF  
C35: 100nF  
C36: 100nF  
C37: 100nF  
C38: 100nF  
C39: 100nF  
C40: 100nF  
C41: 100nF  
C42: 100nF  
R1: 100ohm  
R2: 100ohm  
R3: 100ohm  
R4: 100ohm  
R5: 100ohm  
R6: 100ohm  
R7: 100ohm  
R8: 100ohm  
R9: 100ohm  
R10: 100ohm  
R11: 100ohm  
R12: 100ohm  
R13: 100ohm  
R14: 100ohm  
R15: 100ohm  
R16: 100ohm  
R17: 100ohm  
R18: 100ohm  
R19: 100ohm  
R20: 100ohm  
R21: 100ohm  
R22: 100ohm  
R23: 100ohm  
R24: 100ohm  
R25: 100ohm  
R26: 100ohm  
R27: 100ohm  
R28: 100ohm  
R29: 100ohm  
R30: 100ohm  
R31: 100ohm  
R32: 100ohm  
R33: 100ohm  
R34: 100ohm  
R35: 100ohm  
R36: 100ohm  
R37: 100ohm  
R38: 100ohm  
R39: 100ohm  
R40: 100ohm  
R41: 100ohm  
R42: 100ohm  
R43: 100ohm  
R44: 100ohm  
R45: 100ohm  
R46: 100ohm  
R47: 100ohm  
R48: 100ohm  
R49: 100ohm  
R50: 100ohm  
R51: 100ohm  
R52: 100ohm  
R53: 100ohm  
R54: 100ohm  
R55: 100ohm  
R56: 100ohm  
R57: 100ohm  
R58: 100ohm  
R59: 100ohm  
R60: 100ohm  
R61: 100ohm  
R62: 100ohm  
R63: 100ohm  
R64: 100ohm  
R65: 100ohm  
R66: 100ohm  
R67: 100ohm  
R68: 100ohm  
R69: 100ohm  
R70: 100ohm  
R71: 100ohm  
R72: 100ohm  
R73: 100ohm  
R74: 100ohm  
R75: 100ohm  
R76: 100ohm  
R77: 100ohm  
R78: 100ohm  
R79: 100ohm  
R80: 100ohm  
R81: 100ohm  
R82: 100ohm  
R83: 100ohm  
R84: 100ohm  
R85: 100ohm  
R86: 100ohm  
R87: 100ohm  
R88: 100ohm  
R89: 100ohm  
R90: 100ohm  
R91: 100ohm  
R92: 100ohm  
R93: 100ohm  
R94: 100ohm  
R95: 100ohm  
R96: 100ohm  
R97: 100ohm  
R98: 100ohm  
R99: 100ohm  
R100: 100ohm  
D1: 22 16S 6H1  
D2: 100nF  
DS1: 100nF  
DS2: 100nF  
E1: 100nF  
E2: 100nF  
J1: 100nF  
J2: 100nF  
J3: 100nF  
L1: 100nF

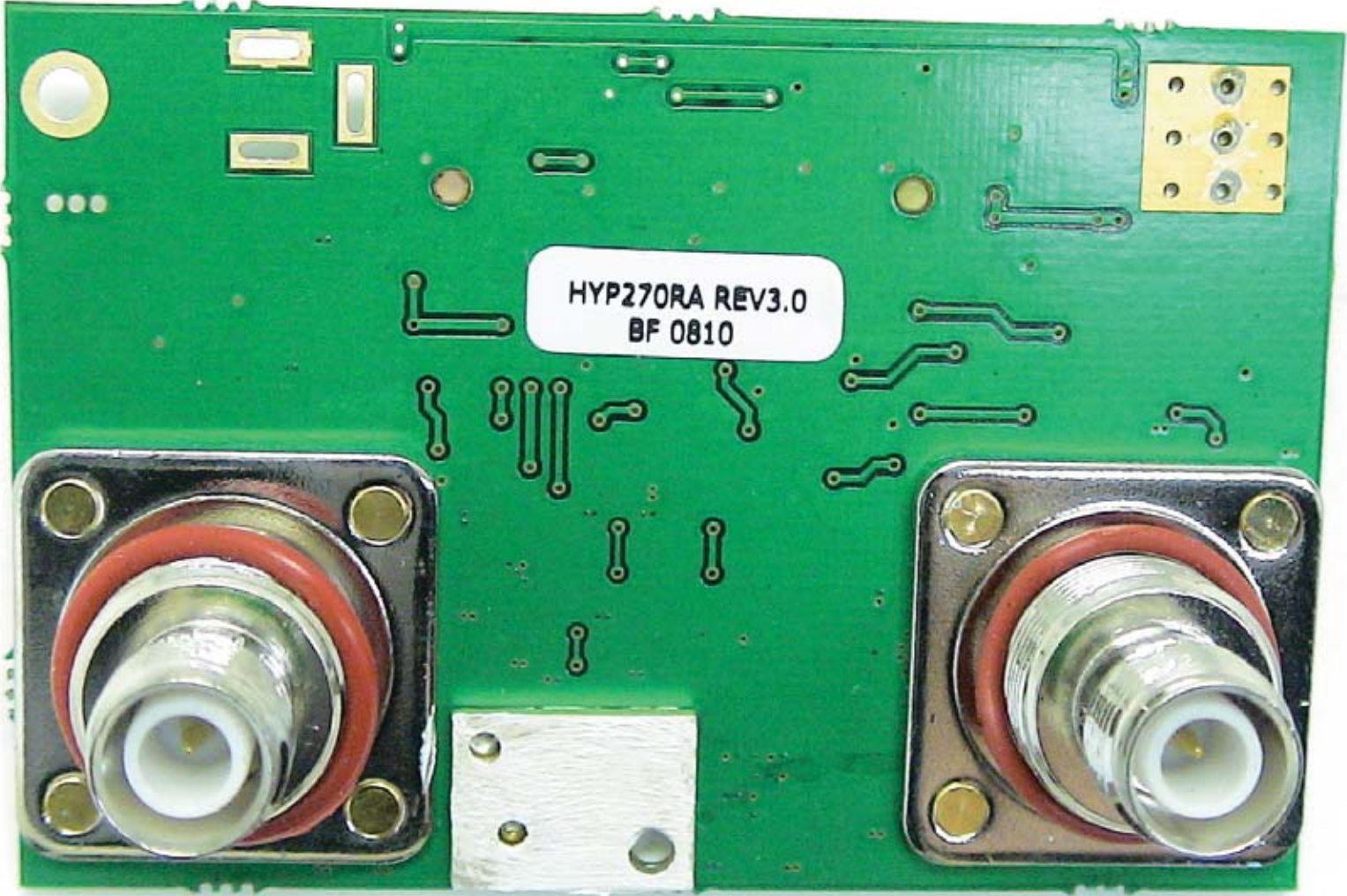
Outdoor Amp apart (top)



Outdoor Amp apart (bottom)



Outdoor Amp PCB (top)





Outdoor Amp PCB (bottom)

