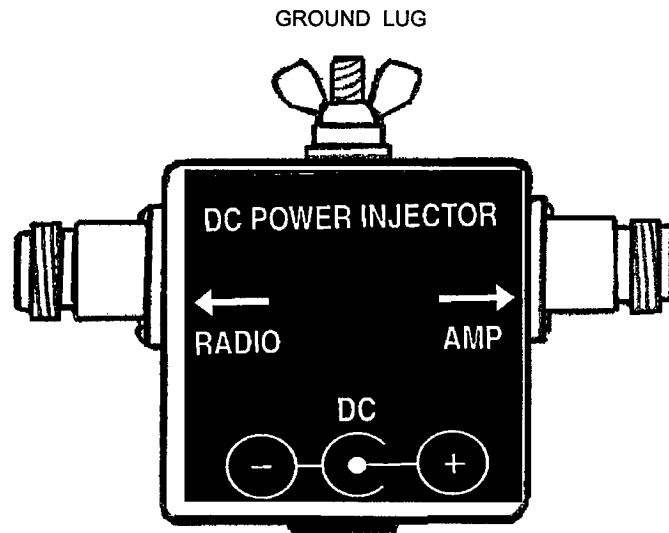
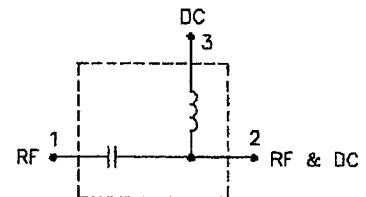


HyperGain™ DC Power Injector/Lightning Protector Model BT-CL01



Electrical Specifications:

Operating Frequency:	800 MHz - 2500 MHz
Operating Voltage:	+12VDC @ 2.0A max.
Insertion Loss:	0.5 dB typical
Clamping Time:	50 nsec.
Max. Surge Current:	600 A
Max. Clamp Voltage:	260 V (8 x 20 usec)
LEDs:	Power & Transmit



Bias-T Functionality

Mechanical Specifications:

Power Connector:	2.1 mm Coaxial (Center Positive)
RF Connectors:	Proprietary
Dimensions:	3.5" x 2" x 1"
Construction:	Cadmium Plated Steel

HyperLink Technologies, Inc.
1200 Clint Moore Road, Suite 14
Boca Raton, FL 33487 USA
Tel: 561-995-2256 Fax: 561-995-2432
EMail: hyperlink@worldnet.att.net