

**INTERNAL PHOTOGRAPHS OF A
2.4 GHz RLAN ACCESS POINT,
BRAND GEMTEK, TYPE WX-1500,
FCC ID MXF-WX1500.**

Accredited by : **STERLAB accreditation number L029
D.A.R., TTI-P-G.127/96-00**
Competent body : **Article 10-2 EMC Directive**
Notified body : **Article 10-5 EMC Directive
Low Voltage Directive
Number 0122 TTE Directive**
Designated laboratory : **TTE Directive**
Notified test service : **Automotive Directive**
FCC listed : **31040/SIT**
VCCI listed : **R 592 and C 507**
Certification body : **Electrical Products Safety
Regulation Hong Kong**

Nederlands Meetinstituut

P.O. Box 15
9822 ZG Niekerk (NL)
Smidshornerweg 18
9822 TL Niekerk (NL)

Telephone: +31 594 505005
Telefax: +31 594 504804
E-mail: NMI@NMI.nl

NMI B.V. (Chamber of Commerce Haaglanden No. 27228701)

Offices: Delft, Bergum, Dordrecht, Niekerk, Utrecht,
Tinton Falls NJ (USA), Kawasaki (Japan), Hortolândia SP (Brazil)

Subsidiary companies:

NMI Certin B.V. (27233418)
NMI Van Swinden Laboratorium B.V. (27228703)
NMI International B.V. (27239176)

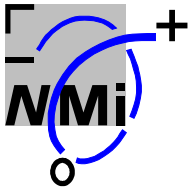
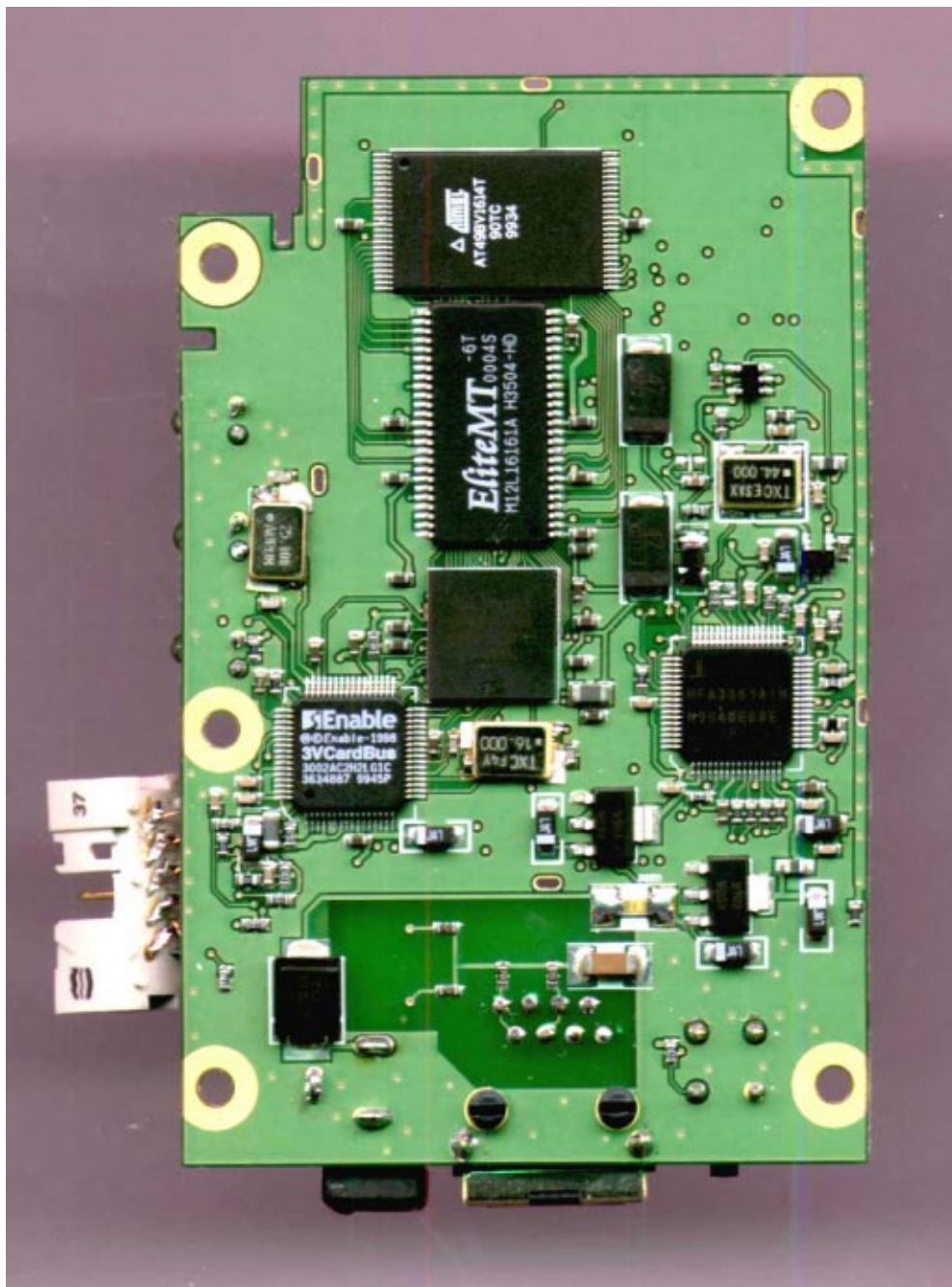


Table of contents

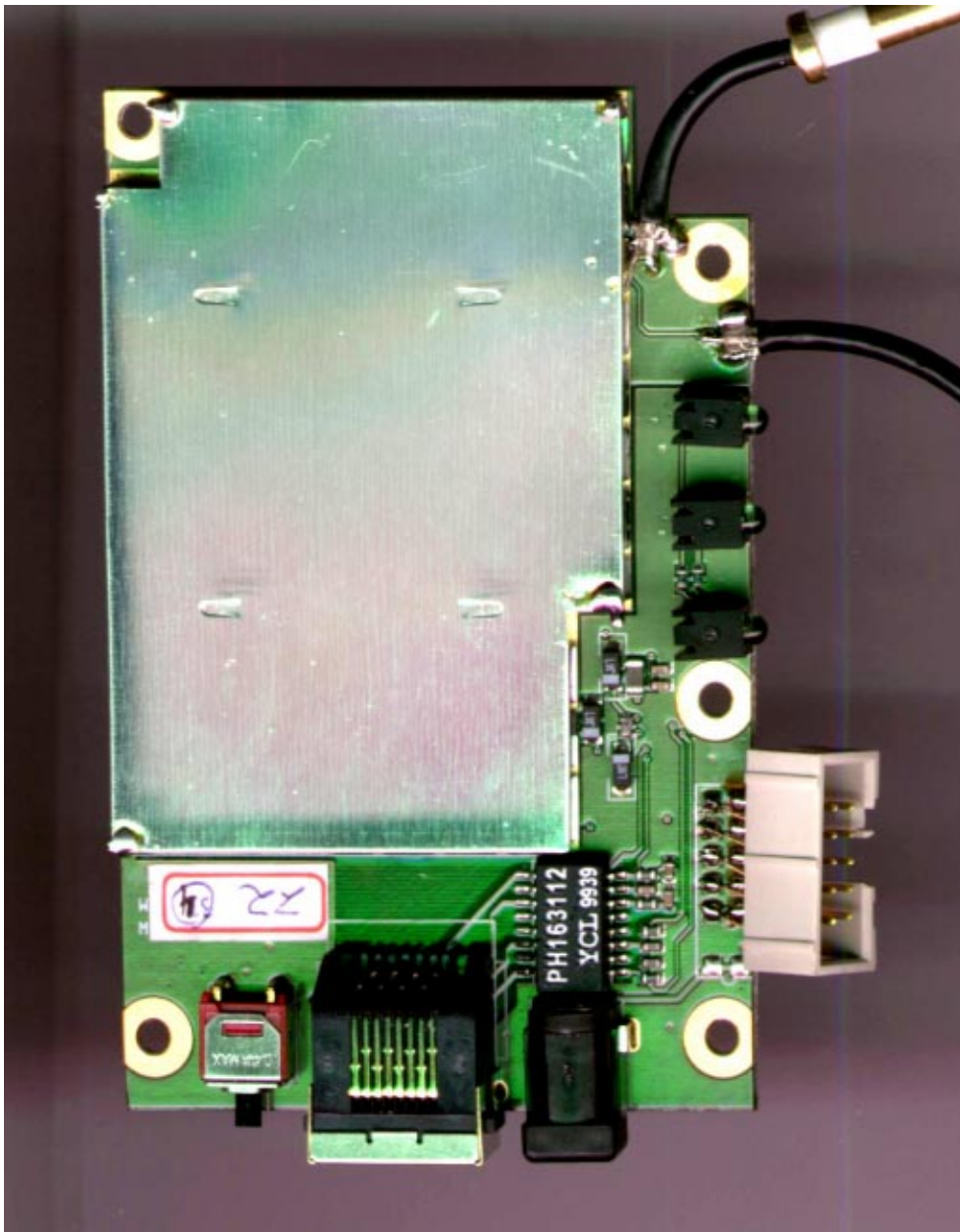
1	Internal Photographs of the test item	3
1.1	<i>Front PCB.....</i>	3
1.2	<i>Rear PCB with shielding.....</i>	4
1.3	<i>Rear PCB without shielding.....</i>	5
1.4	<i>Interior of test item with mounted PC board.....</i>	6

1 Internal Photographs of the test item

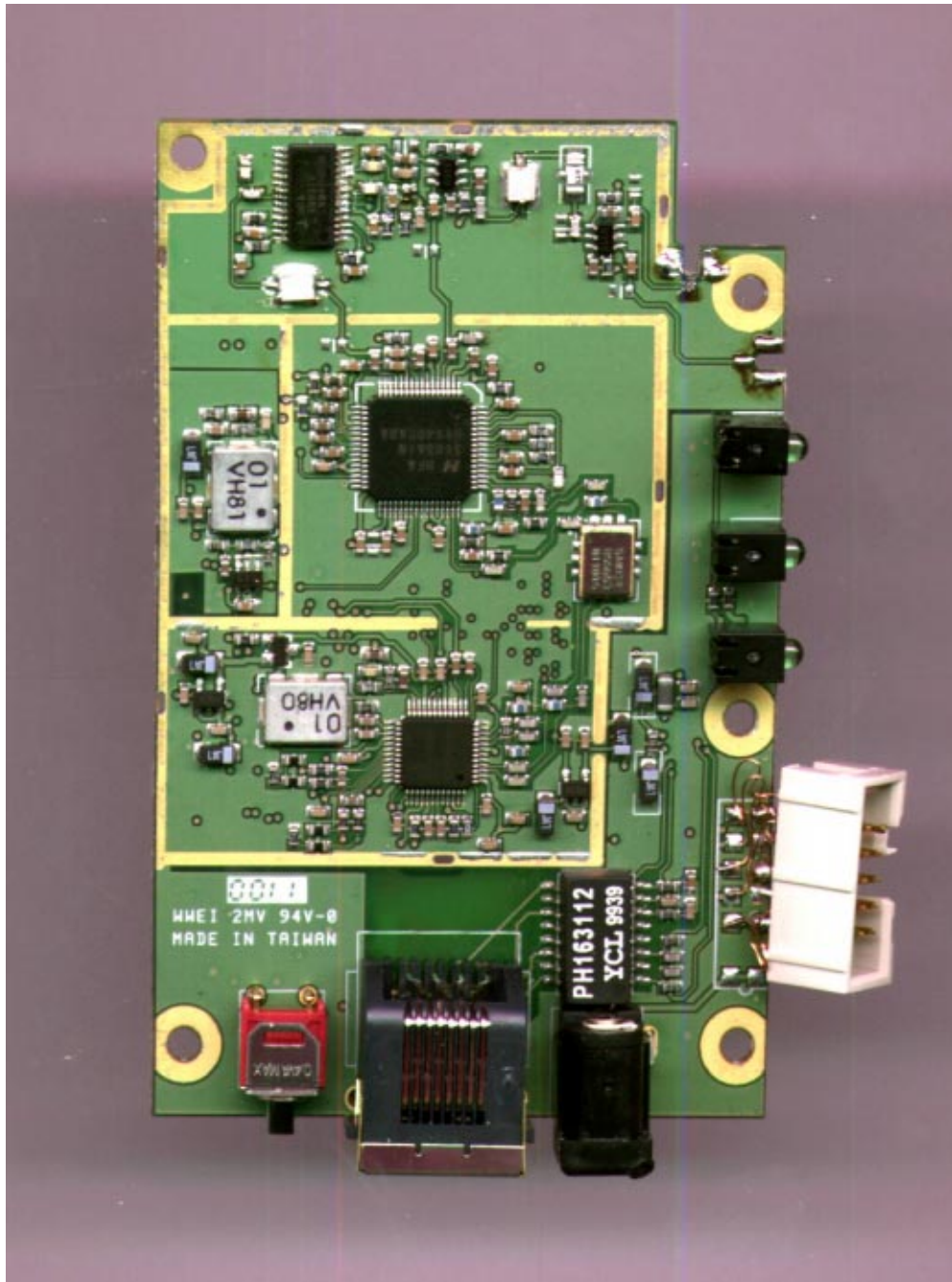
1.1 Front PCB



1.2 Rear PCB with shielding



1.3 Rear PCB without shielding



1.4 Interior of test item with mounted PC board

