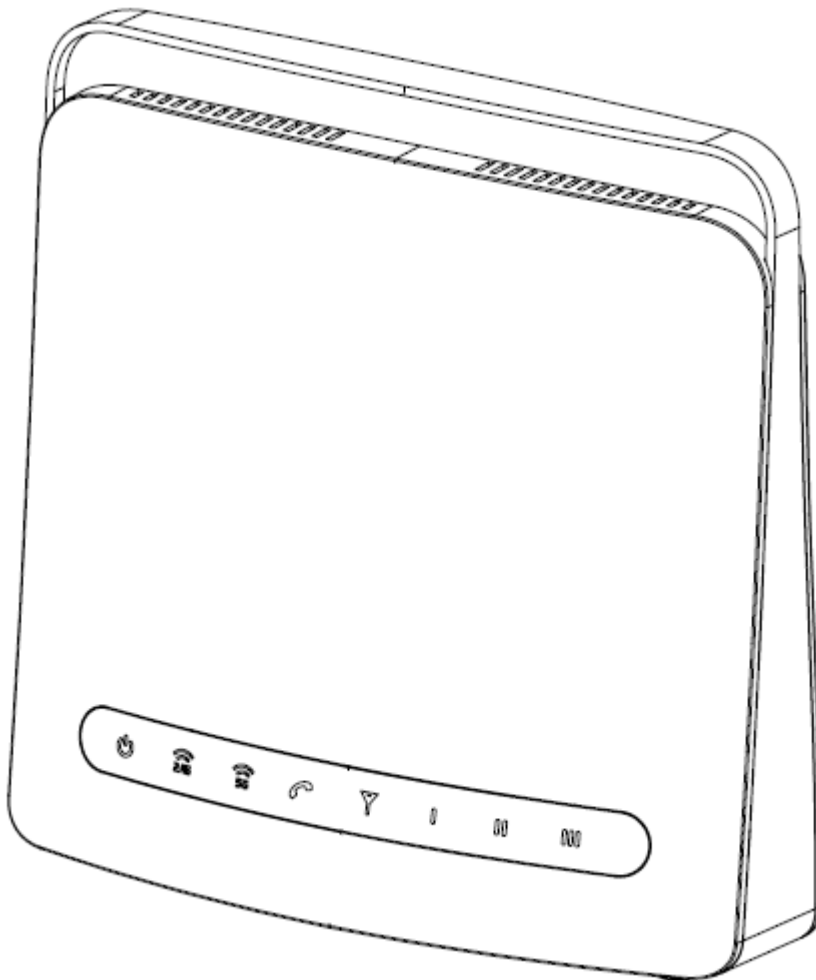
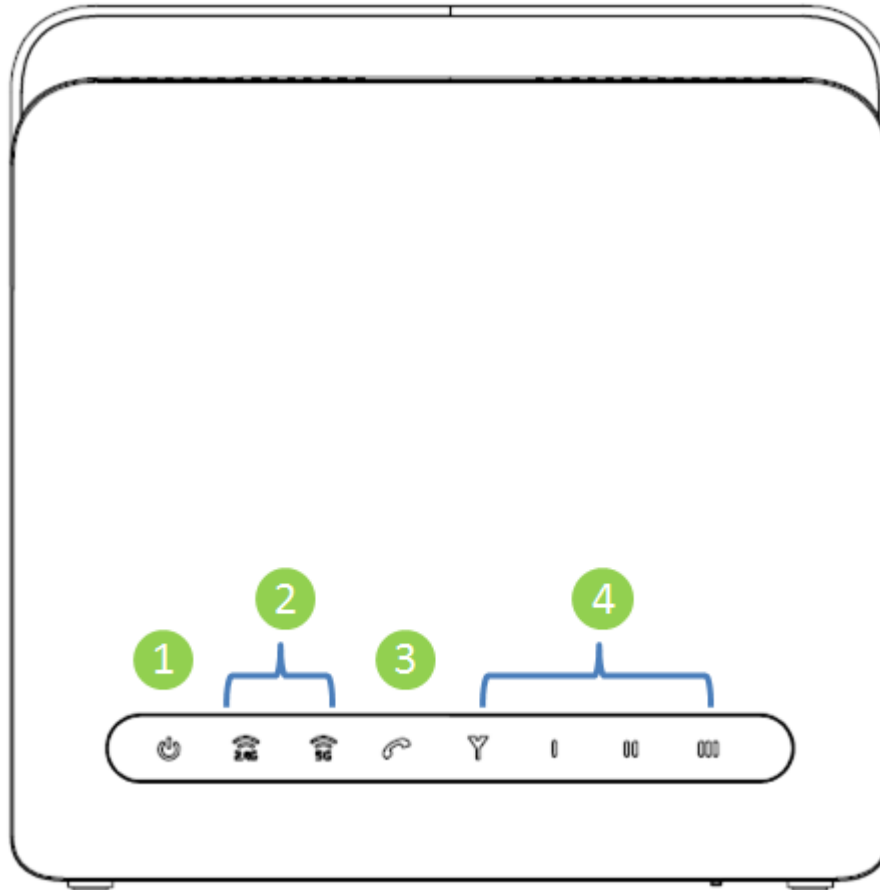






LTE Cat 6 Single-Mode Indoor CPE
WLTFSM-136ACN_384041


Quick installation Guide



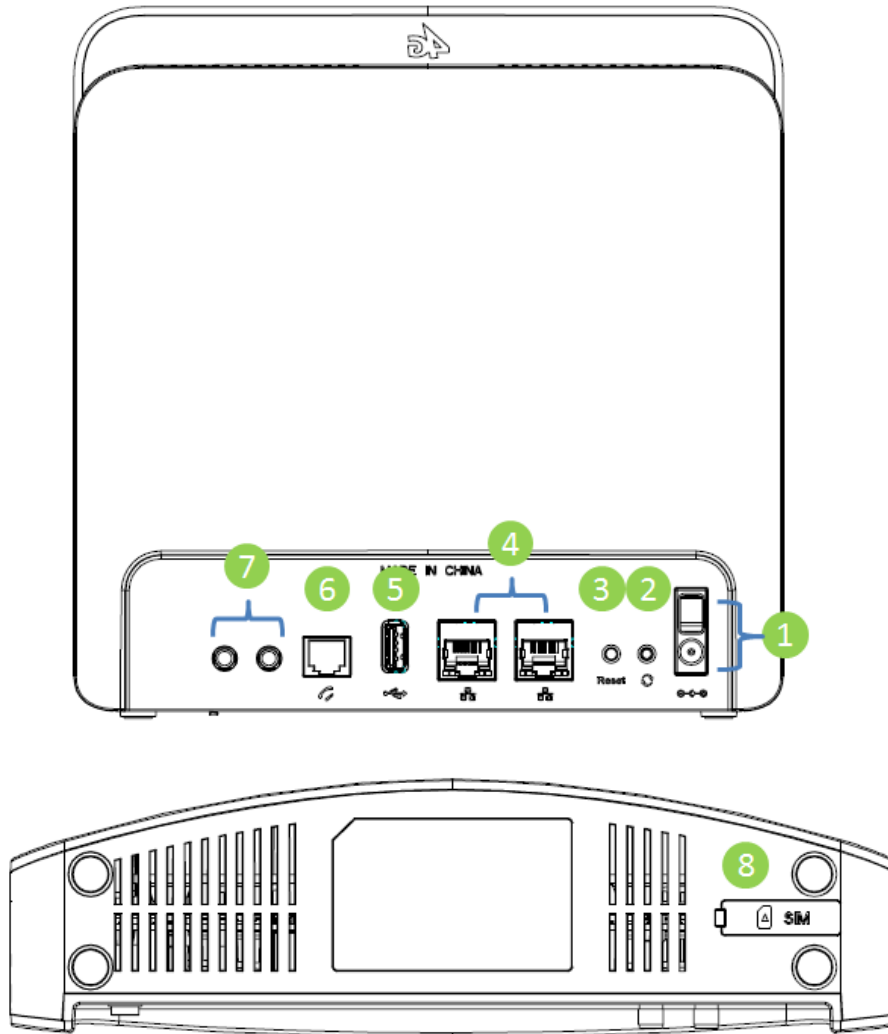
LED Indicators



	LED Indication		Status	Description
1	Power		ON	Power ON
			OFF	Power OFF
2	WiFi status		ON	Wi-Fi ON
			OFF	Wi-Fi OFF
			Flashing	Transmitting data
3	VoIP Status		ON	VoIP ON
			OFF	VoIP OFF

4	Signal Strength		ON	Display signal strength
				1 LED: 5dB < CINR < 10dB
				2 LED: 10dB < CINR < 18dB
			3 LED: 18dB < SINR	
			OFF	SINR < 5dB
Flashing	Scanning Base Station			
5	Firmware Upgrade		All LED Flashing	

Connectors



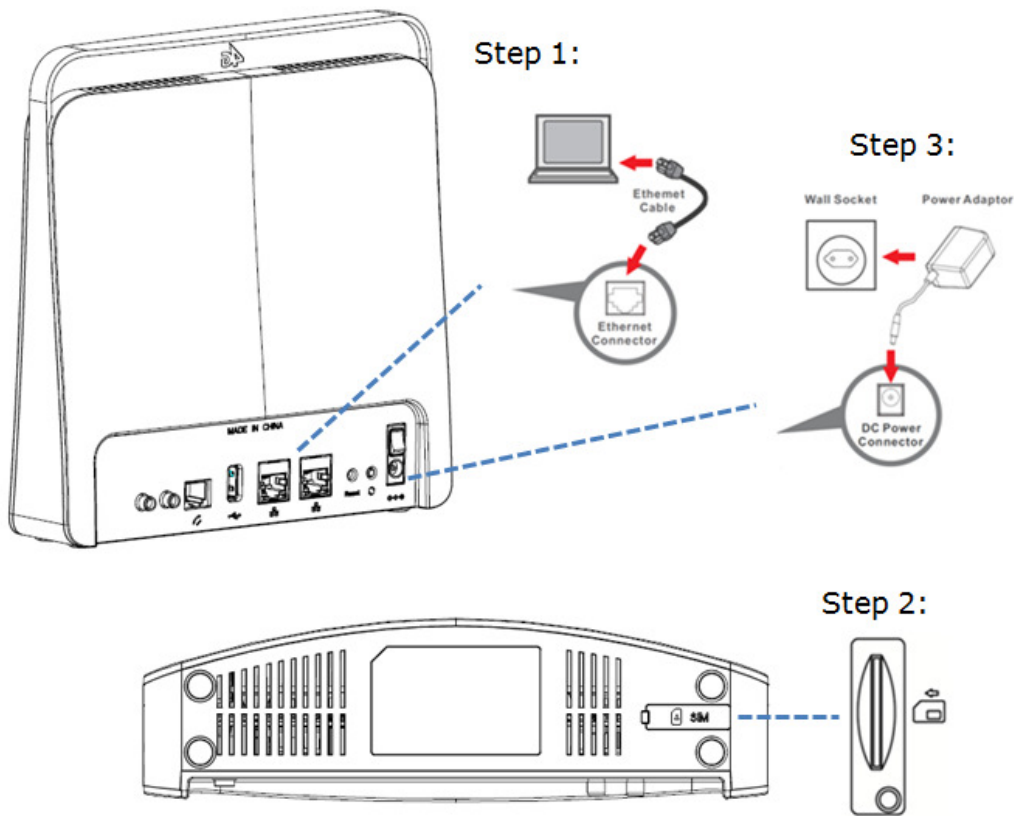
	Connector	Description
1	Power (DC-12V Port)	The power port is where you connect the enclosed power adapter.
	Power On/Off Switch	The on/off switch support to turn off device
2	WPS	Holds down the button for 5 seconds to WPS enable
3	Reset	Holds down the button for 5-seconds to factory defaults.
4	LAN - RJ -45	The LAN port allows you to connect Modem to your PC or Hub using a Cat.5/6 Ethernet

		network cable.
5	USB Type A Host	Support USB 2.0 Host
6	Voice- RJ-11	The voice port allows you to connect your Phone to this Modem
7	Antenna Connector	Support external Antenna with SMA Connectors
8	USIM Slot	Support 2FF size ; 1.8V/3.3V USIM for LTE Mode

Installation

Please follow the steps below to install the device:

- Step1:** Connect the device **LAN** port to your PC with a RJ-45 Ethernet cable that is supplied.
- Step2:** Insert SIM card into the device with right direction.
- Step3:** Insert the power cord into the LTE Indoor CPE's **DC-12V** power jack; and insert the plug into power outlet.
- Step4:** Switch ON the power. The device will start the booting process. After a few seconds, the LED lights will start blinking.



Easy Setup

Please follow the steps below to configure your device through the web interface:

Step1: Open the Web browser (Internet Explorer) and enter the default IP address of the IDU CPE : <http://192.168.15.1>

Step2: Enter username/password to access the web management interface.
http://192.168.15.1
Username : administrator
Password : administrator

The page displays in your browser after login; you can simply configure the device settings.

Federal Communication Commission Interference Statement

This equipment has been tested and found to comply with the limits for a Class B digital device, pursuant to Part 15 of the FCC Rules. These limits are designed to provide reasonable protection against harmful interference in a residential installation. This equipment generates, uses and can radiate radio frequency energy and, if not installed and used in accordance with the instructions, may cause harmful interference to radio communications. However, there is no guarantee that interference will not occur in a particular installation. If this equipment does cause harmful interference to radio or television reception, which can be determined by turning the equipment off and on, the user is encouraged to try to correct the interference by one of the following measures:

- Reorient or relocate the receiving antenna.
- Increase the separation between the equipment and receiver.
- Connect the equipment into an outlet on a circuit different from that to which the receiver is connected.
- Consult the dealer or an experienced radio/TV technician for help.

FCC Caution: Any changes or modifications not expressly approved by the party responsible for compliance could void the user's authority to operate this equipment.

This device complies with Part 15 of the FCC Rules. Operation is subject to the following two conditions: (1) This device may not cause harmful interference, and (2) this device must accept any interference received, including interference that may cause undesired operation.

IMPORTANT NOTE:

Radiation Exposure Statement:

This equipment complies with FCC radiation exposure limits set forth for an uncontrolled environment. This equipment should be installed and operated with minimum distance **20**cm between the radiator & your body.

This transmitter must not be co-located or operating in conjunction with any other antenna or transmitter.

Country Code selection feature to be disabled for products marketed to the US/CANADA

Operation of this device is restricted to indoor use only.

Industry Canada statement:

This device complies with Industry Canada's licence-exempt RSSs. Operation is subject to the following two conditions:

- (1) This device may not cause interference; and
- (2) This device must accept any interference, including interference that may cause undesired operation of the device.

Le présent appareil est conforme aux CNR d'Industrie Canada applicables aux appareils radio exempts de licence. L'exploitation est autorisée aux deux conditions suivantes:

- 1) l'appareil ne doit pas produire de brouillage;
- 2) l'utilisateur de l'appareil doit accepter tout brouillage radioélectrique subi, même si le brouillage est susceptible d'en compromettre le fonctionnement.

(For transmitters equipped with detachable antennas)

This radio transmitter (IC: 3069B-WLTFSM13641) has been approved by Industry Canada to operate with the antenna types listed below with the maximum permissible gain indicated. Antenna types not included in this list, having a gain greater than the maximum gain indicated for that type, are strictly prohibited for use with this device.

Le présent émetteur radio (IC: 3069B-WLTFSM13641) a été approuvé par Industrie Canada pour fonctionner avec les types d'antenne énumérés ci-dessous et ayant un gain admissible maximal. Les types d'antenne non inclus dans cette liste, et dont le gain est supérieur au gain maximal indiqué, sont strictement interdits pour l'exploitation de l'émetteur.

Type	Gain	Connector
Dipole	2.5	SMA

Caution:

the device for operation in the band 5150–5250 MHz is only for indoor use to reduce the potential for harmful interference to co-channel mobile satellite systems;

Avertissement:

les dispositifs fonctionnant dans la bande de 5150 à 5250MHz sont réservés uniquement pour une utilisation à l'intérieur afin de réduire les risques de brouillage préjudiciable aux systèmes de satellites mobiles utilisant les mêmes canaux;

Radiation Exposure Statement:

This equipment complies with Canada radiation exposure limits set forth for an uncontrolled environment. This equipment should be installed and operated with minimum distance **20**cm between the radiator & your body.

Déclaration d'exposition aux radiations:

Cet équipement est conforme Canada limites d'exposition aux radiations dans un environnement non contrôlé. Cet équipement doit être installé et utilisé à distance minimum de **20**cm entre le radiateur et votre corps.

Europe – EU Declaration of Conformity

This device complies with the essential requirements of the Radio Equipment directive: 2014 / 53 / EU. The following test methods have been applied in order to prove presumption of conformity with the essential requirements of the Radio Equipment directive: **2014 / 53 / EU**:

EN 300 328 V2.1.1

EN 62311:2008

EN 50385:2002

Draft EN 301 893 V2.1.0

EN 301 908-1 V11.1.1

EN 301 908-13 V11.1.1

Draft EN 301489-1 V2.2.0

Draft EN 301489-17 V3.2.0

Draft EN 301 489-52 V.1.1.0

EN 60950-1:2006 + A1:2010 + A11:2009 + A12:2011 + A2:2013

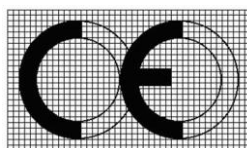
20 dBm, 2.4G: 2412 MHz – 2472 MHz

22.5 dBm, 5G B1: 5150 MHz – 5250 MHz

24.5 dBm, B38: 2570 MHz – 2620 MHz

24.5 dBm, B40: 2300 MHz – 2400 MHz

The minimum distance between the user and/or any bystander and the radiating structure of the transmitter is **20** cm.



5150 ~ 5350 MHz is limited to indoor used in below countries.

		
BE	BG	CZ
DK	DE	EE
IE	EL	ES
FR	HR	IT
CY	LV	LT
LU	HU	MT
NL	AT	PL

PT	RO	SI
SK	FI	SE
UK	LI	IS
NO	TR	CH