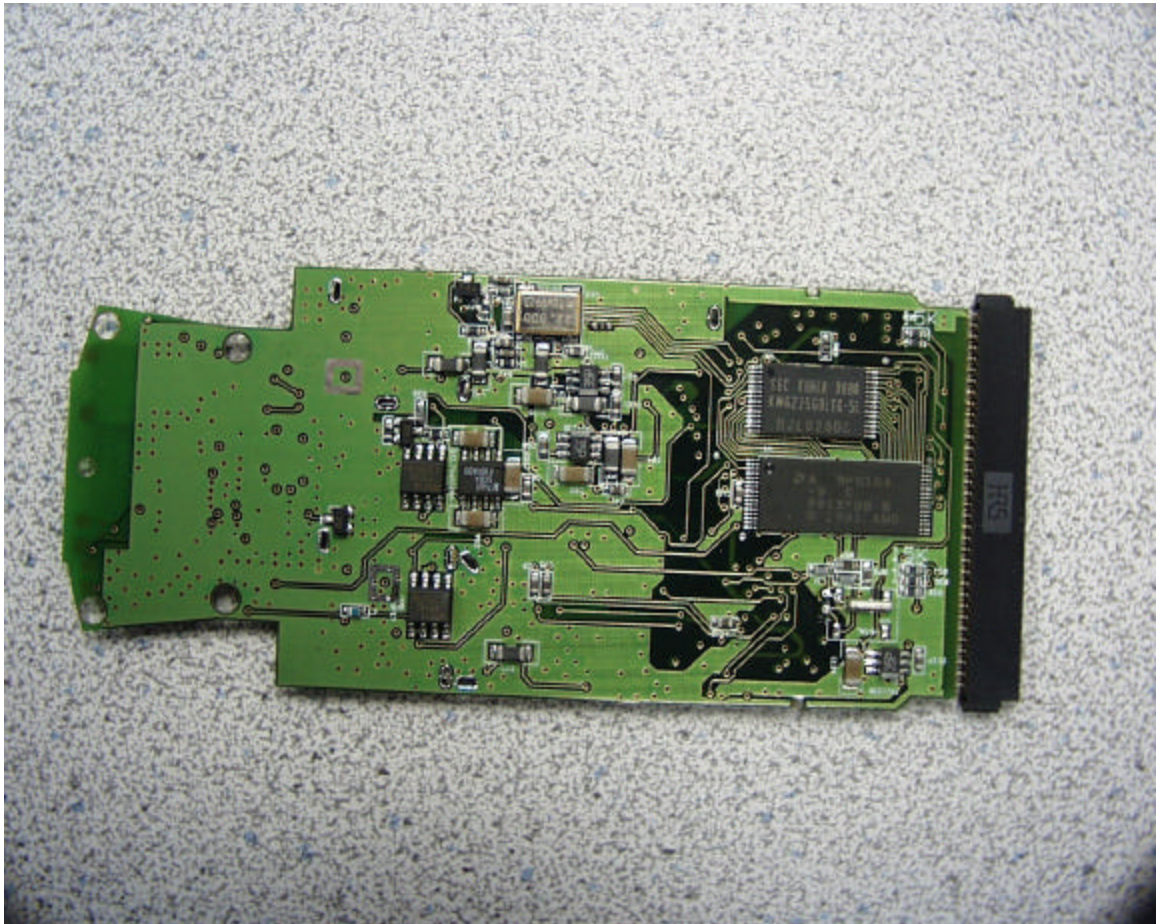


GEMTEK WL-205 RADIO OR NGEANN POLYTECHNIC ORLINLINK-2000 RADO



GEMTEK WL-205 RADIO OR NGEEANN POLYTECHNIC ORLINLINK-2000 RADO

Murata Chip Dielectric Antenna
Model: ANCLC2R44J084AAA
Frequency Range: 2.4GHz - 2.4835GHz
Input Impedence:50 Ohm
Gain: +0.5dBi

