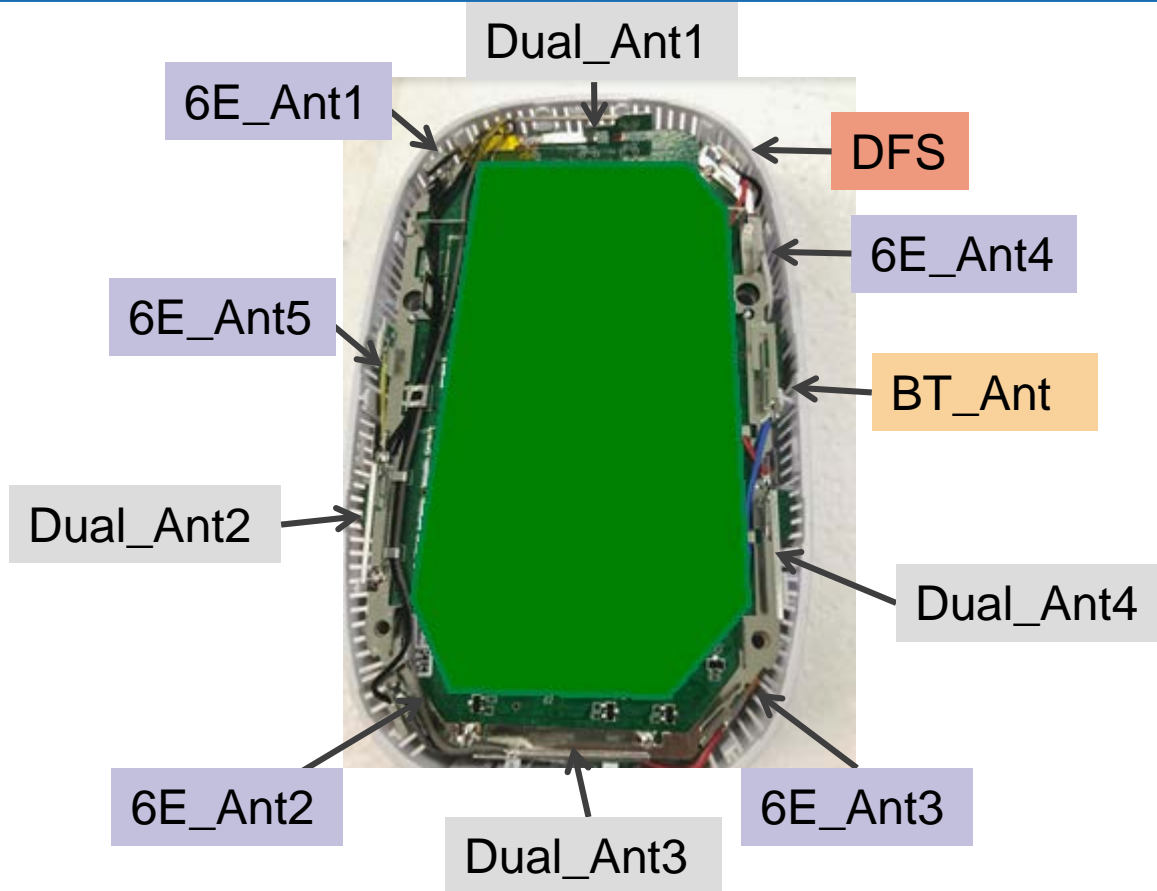


WREM-129AX Antenna Test Report

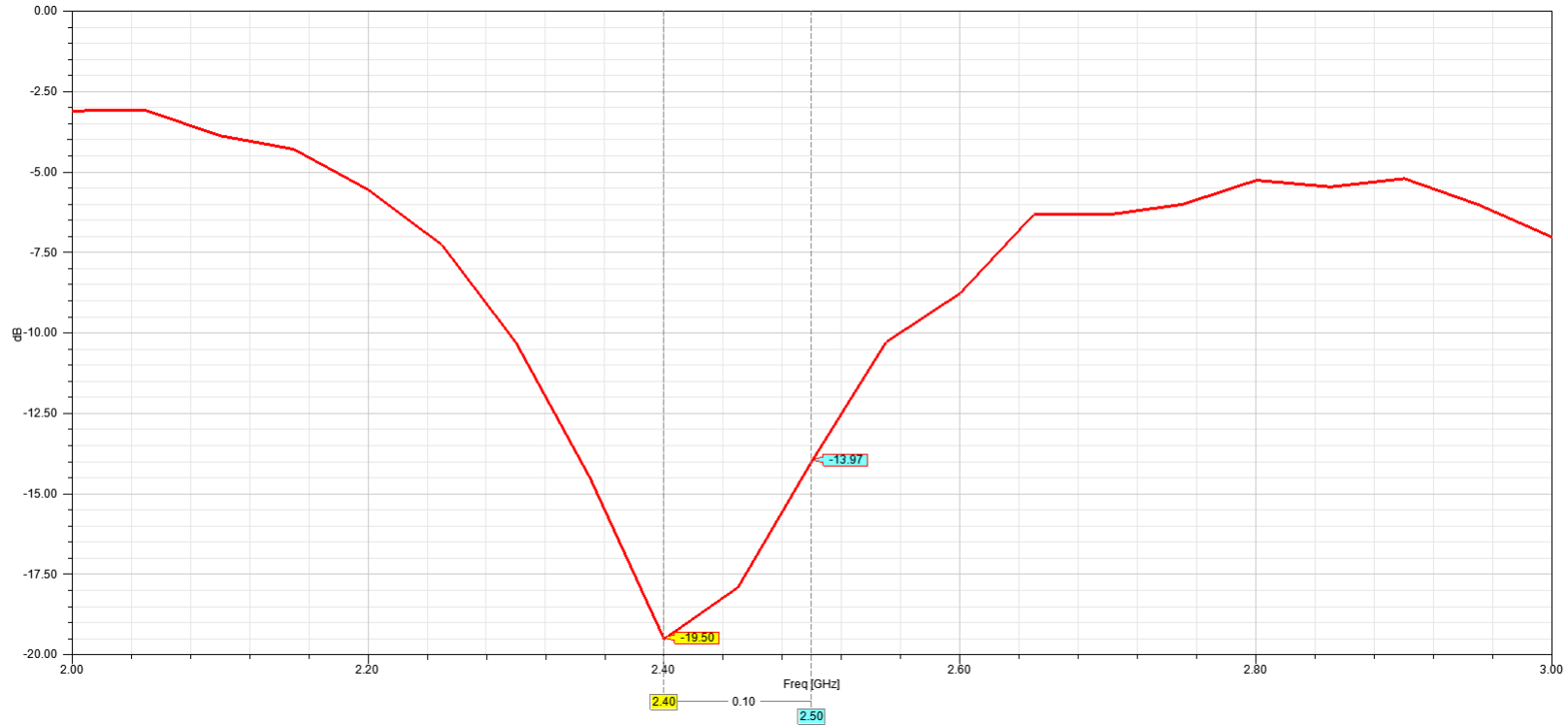


2023/06/20

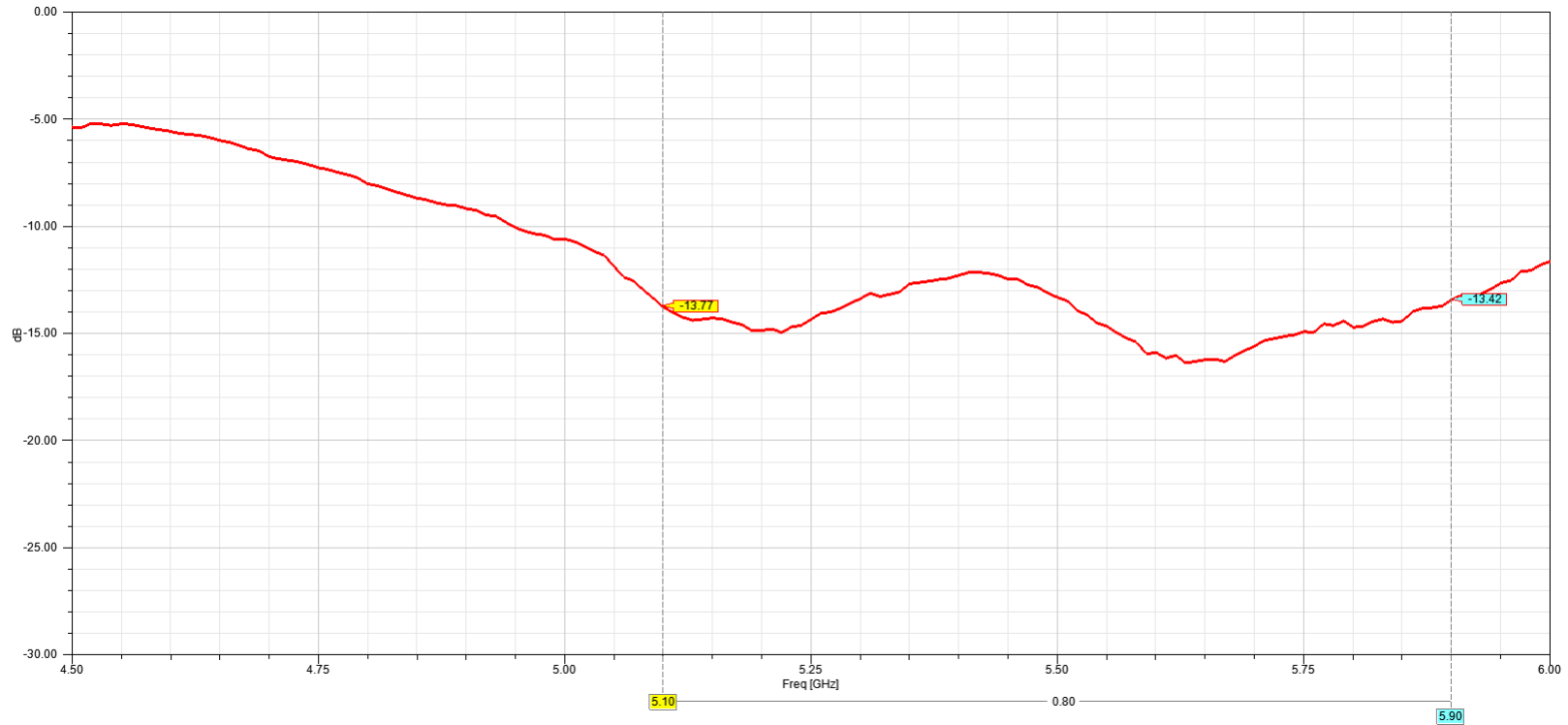
Antenna Set Definition



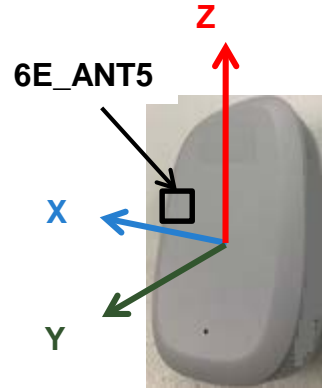
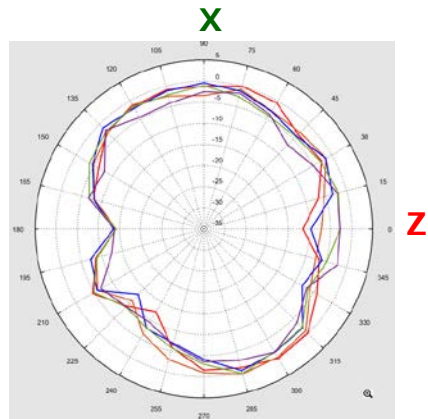
BT Antenna Return Loss



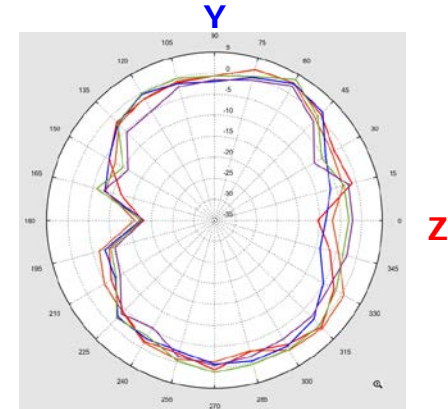
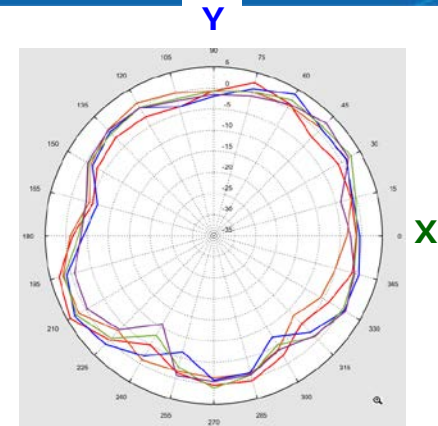
DFS Antenna Return Loss



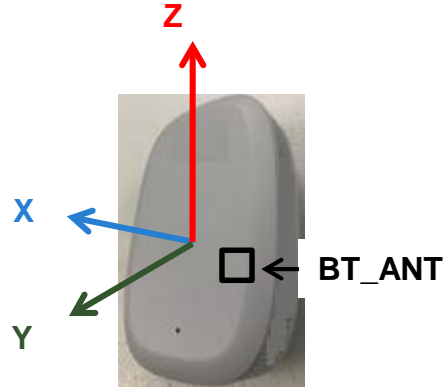
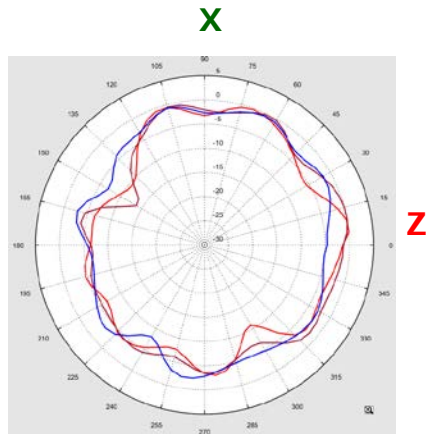
6E_ANT5 GainTotal (dBi) Pattern



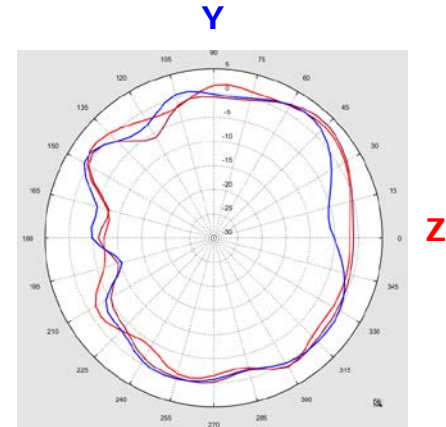
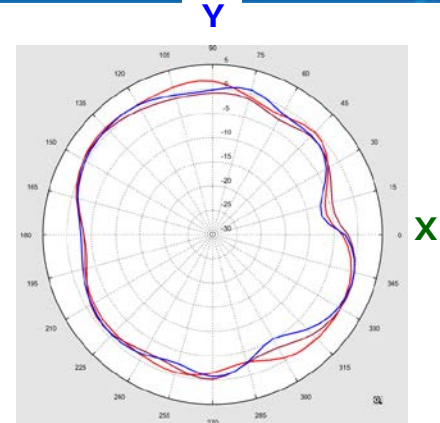
- 5900MHz
- 6200MHz
- 6500MHz
- 6800MHz
- 7100MHz



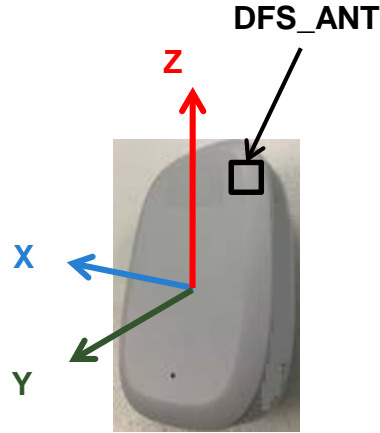
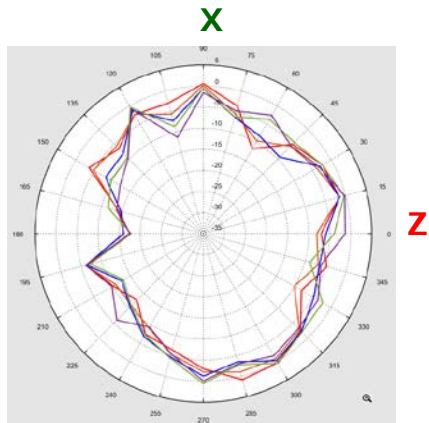
BT_ANT GainTotal (dBi) Pattern



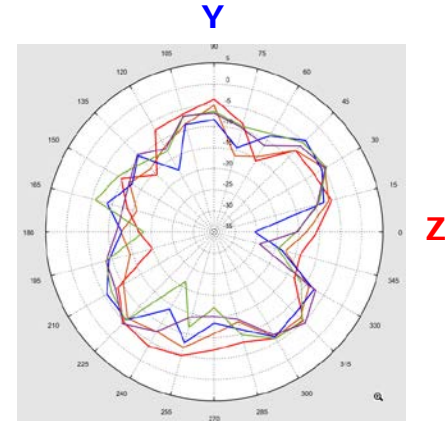
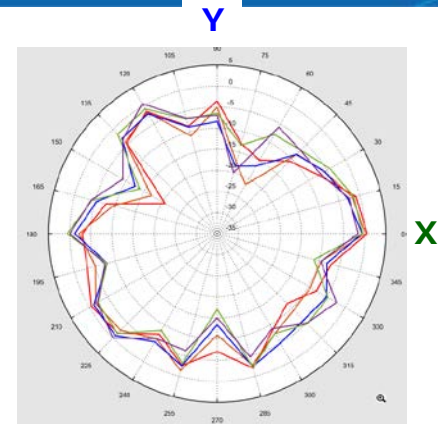
2400MHz —
2450MHz —
2500MHz —



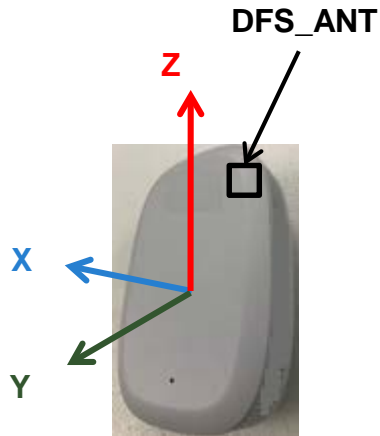
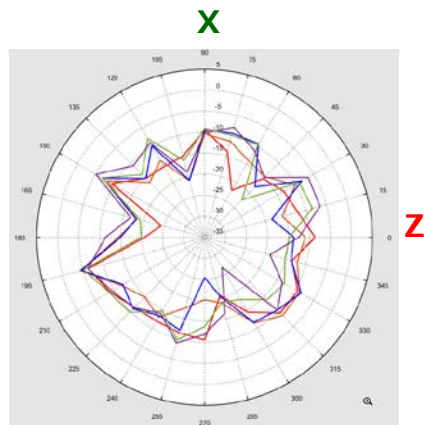
DFS_ANT Gain (dBi) Pattern (Vertical Polarization)



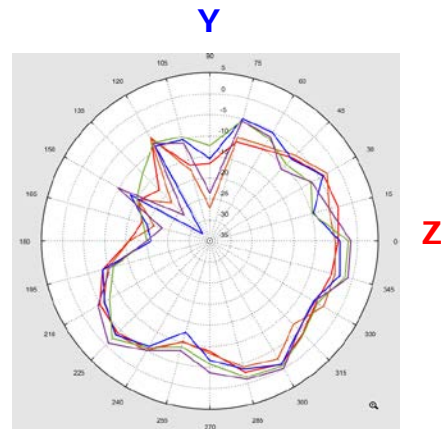
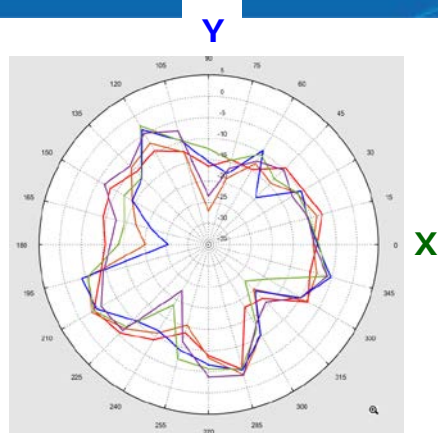
- 5100MHz —
- 5300MHz —
- 5500MHz —
- 5700MHz —
- 5900MHz —



DFS_ANT Gain (dBi) Pattern (Horizontal Polarization)



- 5100MHz —
- 5300MHz —
- 5500MHz —
- 5700MHz —
- 5900MHz —



Dual_Band Antenna Efficiency & Peak Gain

WIFI G Band Antenna Efficiency (%)			
Frequency (MHz)	2400	2450	2500
BT_ANT	70.55	71.92	70.34

WIFI G Band Antenna Peak Gain (dB)			
Frequency (MHz)	2400	2450	2500
BT_ANT	2.4	2.82	2.75

Dual-Band Antenna Efficiency & Peak Gain

WIFI A Band Antenna Efficiency (%)

Frequency (MHz)	5100	5300	5500	5700	5900
DFS	71.24	72.48	72.97	74.19	73.77

WIFI A Band Antenna Peak Gain (dB)

Frequency (MHz)	5100	5300	5500	5700	5900
DFS	4.24	4.44	4.57	4.43	4.56

6E-Band Antenna Efficiency & Peak Gain

WIFI 6E Band Antenna Efficiency (%)

Frequency (MHz)	5900	6200	6500	6800	7100
6E_Ant5	71.88	72.72	75.46	74.95	72.21

WIFI 6E Band Antenna Peak Gain (dB)

Frequency (MHz)	5900	6200	6500	6800	7100
6E_Ant5	4.34	4.41	4.49	4.57	4.60