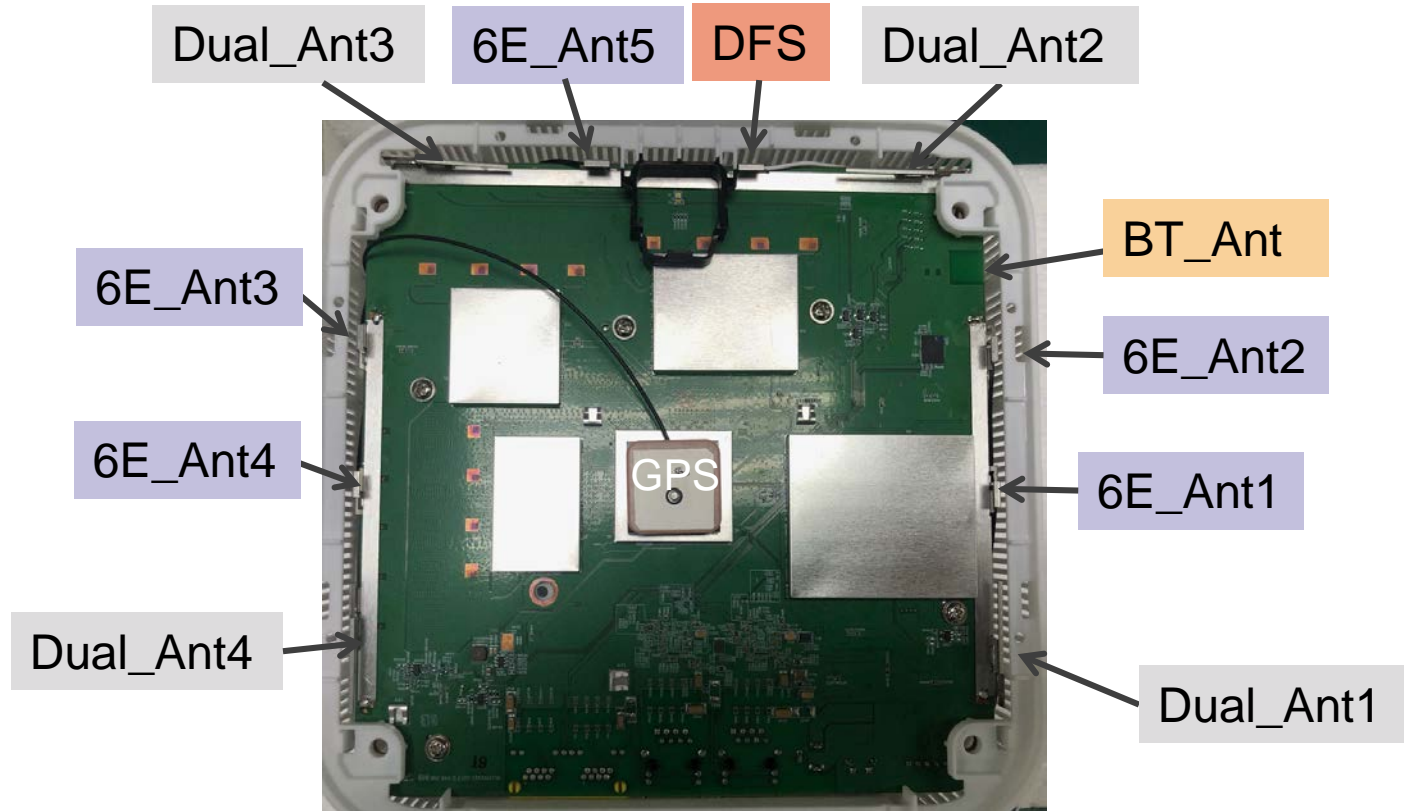


# W1700 Stainless Antenna Test Report

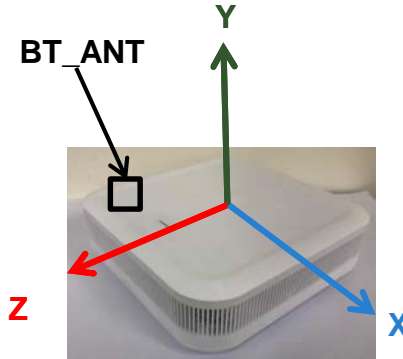
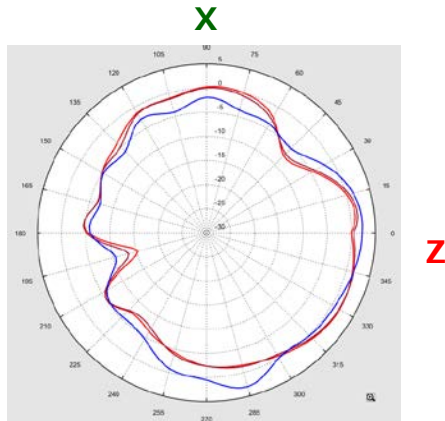


2024/02/26

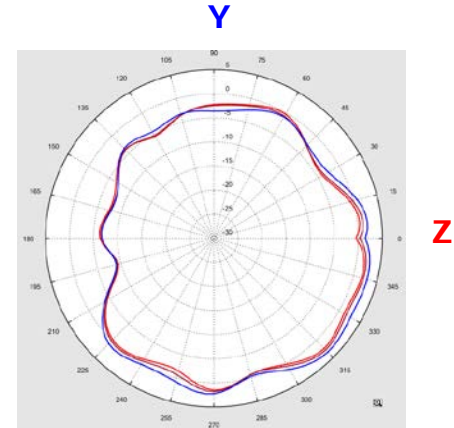
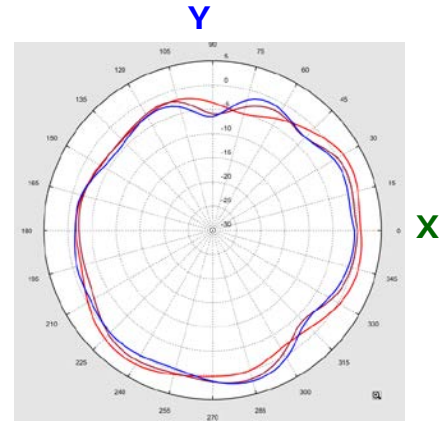
# Antenna Set Definition



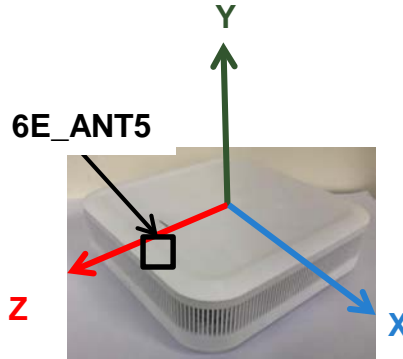
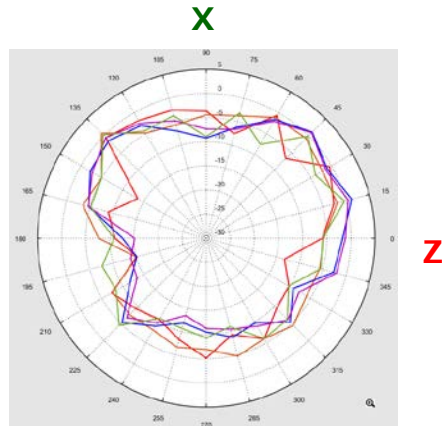
# BT\_ANT GainTotal (dBi) Pattern



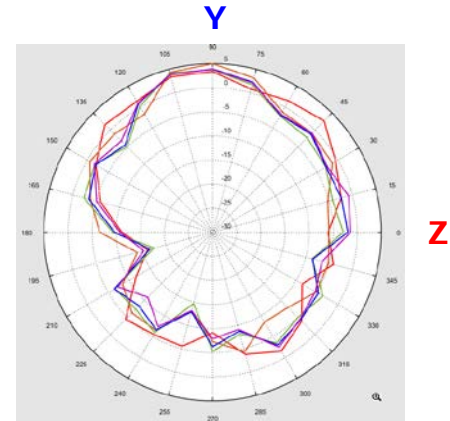
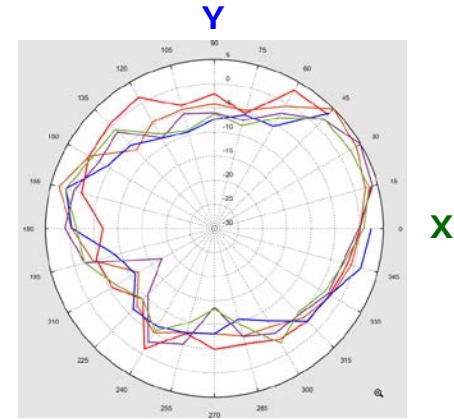
2400MHz ———  
2450MHz ———  
2500MHz ———



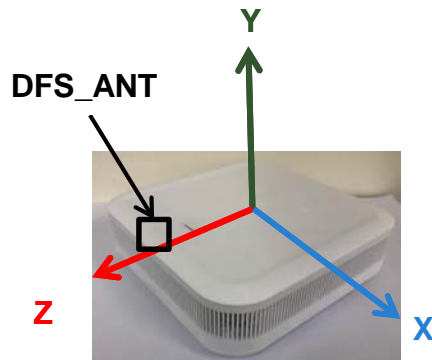
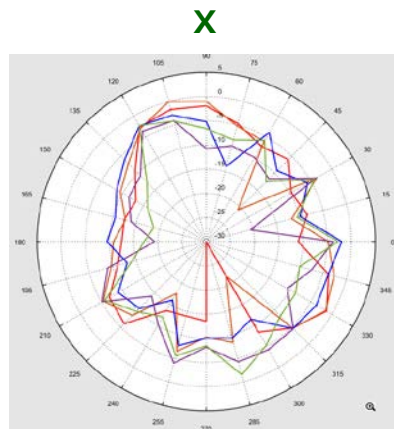
# 6E\_ANT5 GainTotal (dBi) Pattern



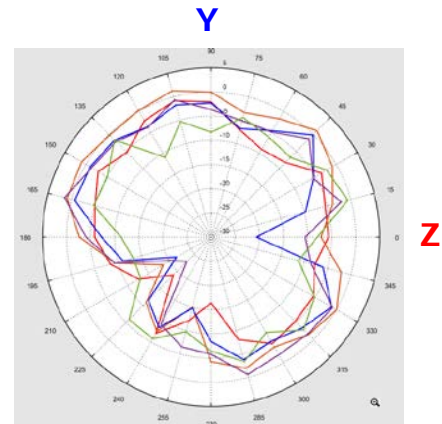
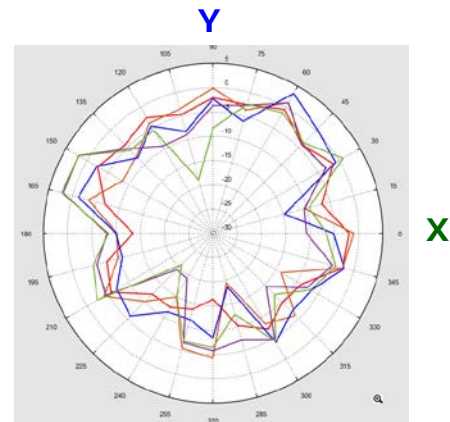
- 5900MHz —
- 6200MHz —
- 6500MHz —
- 6800MHz —
- 7100MHz —



# DFS\_ANT Gain (dBi) Pattern (Vertical Polarization)

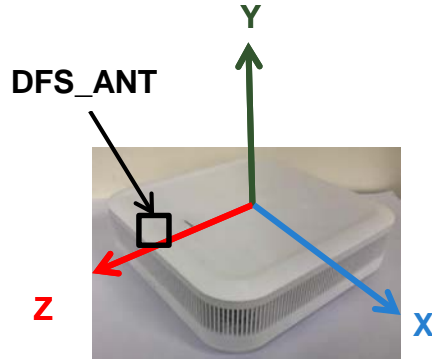
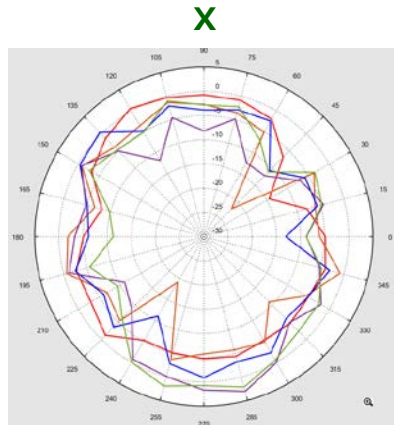


- 5100MHz
- 5300MHz
- 5500MHz
- 5700MHz
- 5900MHz

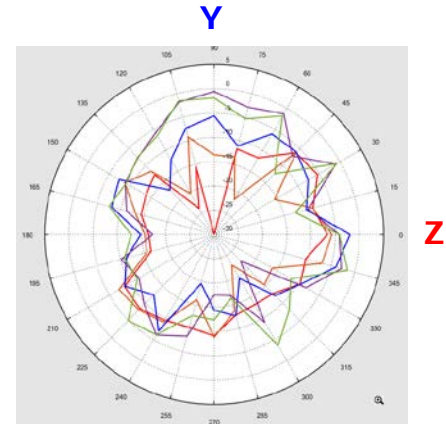
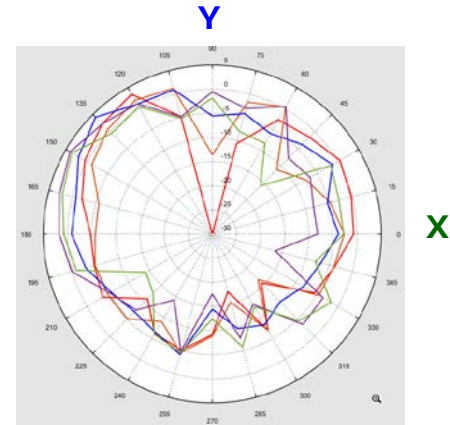




# DFS\_ANT Gain (dBi) Pattern (Horizontal Polarization)



- 5100MHz —
- 5300MHz —
- 5500MHz —
- 5700MHz —
- 5900MHz —



# BT Antenna Efficiency & Peak Gain

WIFI G Band Antenna Efficiency (%)			
Frequency (MHz)	2400	2450	2500
BT_ANT	70.45	72.27	71.21

WIFI G Band Antenna Peak Gain (dB)			
Frequency (MHz)	2400	2450	2500
BT_ANT	2.82	2.88	2.94

# 6E-Band Antenna Efficiency & Peak Gain

WIFI 6E Band Antenna Efficiency (%)

Frequency (MHz)	5900	6200	6500	6800	7100
6E_Ant5	71.07	74.12	73.87	72.87	73.68

WIFI 6E Band Antenna Peak Gain (dB)

Frequency (MHz)	5900	6200	6500	6800	7100
6E_Ant5	4.15	4.33	4.52	4.38	4.43



# DFS Antenna Efficiency & Peak Gain

WIFI A Band Antenna Efficiency (%)

Frequency (MHz)	5100	5300	5500	5700	5900
DFS	71.78	73.53	72.45	73.16	71.8

WIFI A Band Antenna Peak Gain (dB)

Frequency (MHz)	5100	5300	5500	5700	5900
DFS	4.03	4.05	4.29	4.38	4.48