

Mini Hub

Quick Installation Guide



WLRRTES-102
Mini Hub (Wall plug)

Copyright

This DOCUMENT is copyrighted with all rights reserved. No part of this publication may be reproduced, transmitted, transcribed, stored in a retrieval system, or translated into any language in any form by any means without the written permission of Gemtek Technology Co. Ltd.

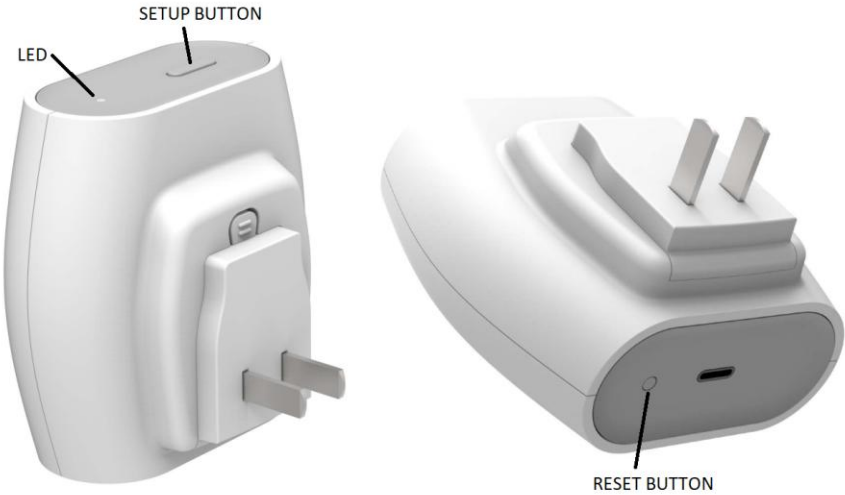
Notice

Gemtek reserves the right to change specifications without prior notice.

While the information in this document has been compiled with great care, it may not be deemed an assurance of product characteristics. Gemtek shall be liable only to the degree specified in the terms of sale and delivery.

The reproduction and distribution of the documentation and software supplied with this product and the use of its contents is subject to written authorization from Gemtek.

Buttons Indicators



- SETUP button, 10 sec press: If in GW Mode: Switch to CONFIG Mode
- SETUP button, 5 sec press: If in CONFIG Mode: Reboot
- RESET button, 5 sec press: Factory reset (wipe out WiFi credentials and LNS credentials)

LED Indicators

Color(s)	Blink Pattern	Mode	Status
GREEN	blinking 1 sec	GW	WiFi STA not connected
GREEN	blinking 1/4 sec	GW	WiFi STA connected, establishing connection to LNS, configuring radio
GREEN	Solid	GW	WiFi STA connected, Sta on connected to LNS, radio listening
GREEN/ ORANGE	blinking 1/4 sec	GW	WiFi STA connected, CUPS transaction in progress Note: Do not unplug device in this state
ORANGE	blinking 1/4 sec	CONFIG	Scanning WiFi networks, settng up configuration AP
ORANGE	blinking 1 sec	CONFIG	Configuration AP active

Installation

Please follow the steps below to install the device:



1. Plug in mini-hub to wall outlet or USB supply.
2. Device will flash green 1 blink per second indicating it is not configured.
3. Press and hold the setup button for 10 seconds until the LED changes to flashing orange.
 - a. This will cause the mini-hub to enter CONFIGURATION mode and create a wifi-access point with the SSID MiniHub-xxxxxx where the last digits are the last 6 digits of the MAC address.
4. Connect a device to the MiniHub-xxxxxx AP.
 - a. The unique password for the configuration AP is found on the label.
5. Open a Web browser and type the address 192.168.4.1 into the address bar.
 - a. A selection of WiFi APs found from site survey is shown.
6. Find the desired AP and click the + next to the name.
7. Enter the password for the AP in the dialog box and hit OK.
8. Scroll to the bottom of the page and click "Save and Reboot" and affirm in the dialog.
9. The Mini-Hub will reboot and the LED will flash Green then Green/Orange then will stay solid Green when it is connected to the server.
10. Once it is solid green setup is complete.

Troubleshooting Tips

If you are experiencing any issues with your device:

- Restart your device.
- Restore your device to factory default settings.
- Contact your service provider or visit the shop.

Attention

- This modem is a complex electronic device. A fall may cause serious damage
- Never open or try to repair the device by yourself. Repairs should be performed by qualified personal only, otherwise the warranty will be void.
- Do not expose the device to a very high or very low temperature.

FCC

Federal Communication Commission Interference Statement

This equipment has been tested and found to comply with the limits for a Class B digital device, pursuant to Part 15 of the FCC Rules. These limits are designed to provide reasonable protection against harmful interference in a residential installation. This equipment generates, uses and can radiate radio frequency energy and, if not installed and used in accordance with the instructions, may cause harmful interference to radio communications. However, there is no guarantee that interference will not occur in a particular installation. If this equipment does cause harmful interference to radio or television reception, which can be determined by turning the equipment off and on, the user is encouraged to try to correct the interference by one of the following measures:

- Reorient or relocate the receiving antenna.
- Increase the separation between the equipment and receiver.

- Connect the equipment into an outlet on a circuit different from that to which the receiver is connected.
- Consult the dealer or an experienced radio/TV technician for help.

FCC Caution: Any changes or modifications not expressly approved by the party responsible for compliance could void the user's authority to operate this equipment.

This device complies with Part 15 of the FCC Rules. Operation is subject to the following two conditions: (1) This device may not cause harmful interference, and (2) this device must accept any interference received, including interference that may cause undesired operation.

IMPORTANT NOTE:

Radiation Exposure Statement:

The product comply with the US portable RF exposure limit set forth for an uncontrolled environment and are safe for intended operation as described in this manual. The further RF exposure reduction can be achieved if the product can be kept as far as possible from the user body or set the device to lower output power if such function is available.

This transmitter must not be co-located or operating in conjunction with any other antenna or transmitter.

Country Code selection feature to be disabled for products marketed to the US/CANADA

Operation of this device is restricted to indoor use only

This equipment should be installed and operated with minimum distance 5mm between the radiator & your body.

Industry Canada statement:

This device contains licence-exempt transmitter(s)/receiver(s) that comply with Innovation, Science and Economic Development Canada's licence-exempt RSS(s). Operation is subject to the following two conditions:

- (1) This device may not cause interference*
- (2) This device must accept any interference, including interference that may cause undesired operation of the device*

Cet appareil contient des émetteurs / récepteurs exempts de licence qui sont conformes au (x) RSS (s) exemptés de licence d'Innovation, Sciences et Développement économique Canada. L'opération est soumise aux deux conditions suivantes:

- (1) Cet appareil ne doit pas causer d'interférences*
- (2) Cet appareil doit accepter toute interférence, y compris les interférences pouvant provoquer un fonctionnement indésirable de l'appareil*

Radiation Exposure Statement:

The product comply with the Canada portable RF exposure limit set forth for an uncontrolled environment and are safe for intended operation as described in this manual. The further RF exposure reduction can be achieved if the product can be kept as far as possible from the user body or set the device to lower output power if such function is available.

This equipment should be installed and operated with minimum distance 5mm between the radiator & your body.

Déclaration d'exposition aux radiations:

Le produit est conforme aux limites d'exposition pour les appareils portables RF pour les Etats-Unis et le Canada établies pour un environnement non contrôlé. Le produit est sûr pour un fonctionnement tel que décrit dans ce manuel. La réduction aux expositions RF peut être augmentée si l'appareil peut être conservé aussi loin que possible du corps de l'utilisateur ou que le dispositif est réglé sur la puissance de sortie la plus faible si une telle fonction est disponible.

Cet équipement doit être installé et utilisé avec un minimum de 5mm de distance entre le radiateur et votre corps.