

**DAIKIN ONE LITE**  
SMART THERMOSTAT

# Homeowner Guide



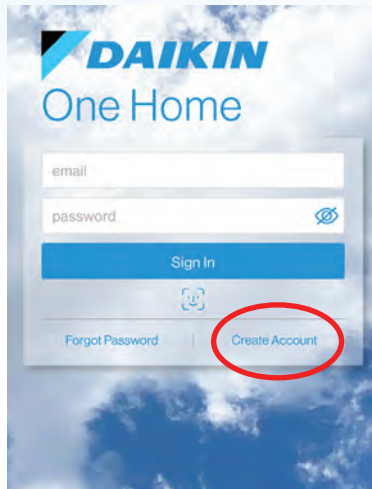
DAIKIN *ONE* LITE  
SMART THERMOSTAT

Welcome! This homeowner guide features an overview of functions and/or features available through the Daikin *One* lite smart thermostat\*.

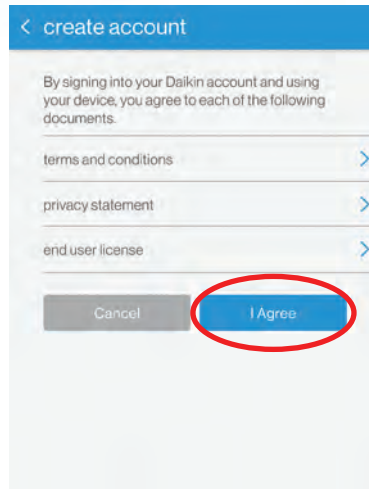
\*The Daikin *One* home app is the preferred means of accessing these features, but the instructions that follow are helpful if the app is not used.



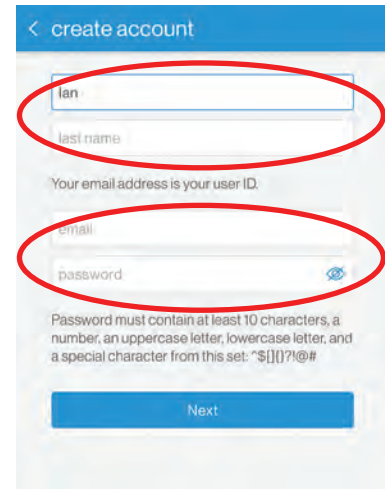
# Create a Daikin *One* home app account



1. After installing the Daikin *One* home app from the App Store or Play Store, select "Create Account".

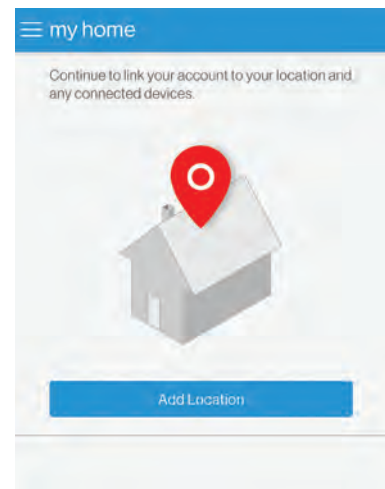
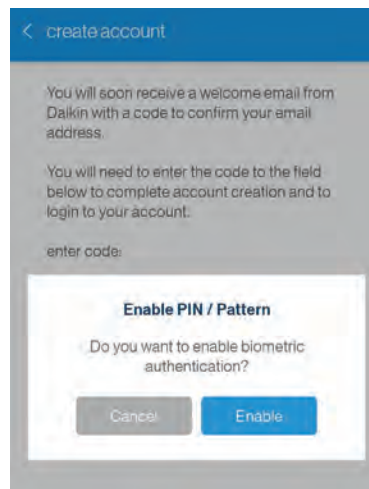
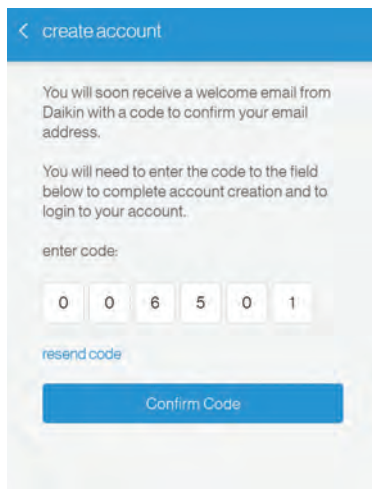
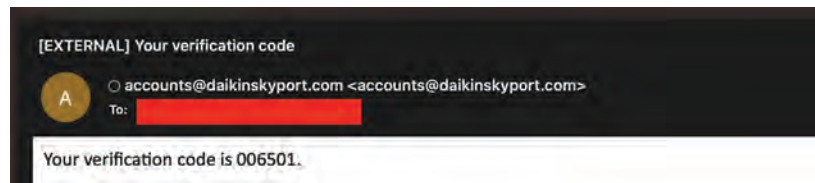


2. Review the documents and select "I Agree".



3. Enter your name, email address, and a password that meets the length and complexity requirements.

4. Check your email account for an email with your account verification code.

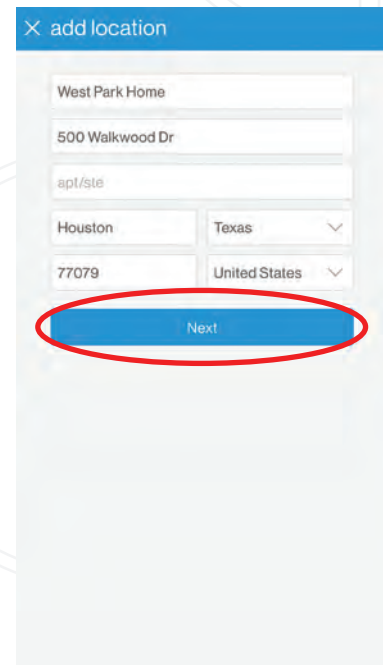
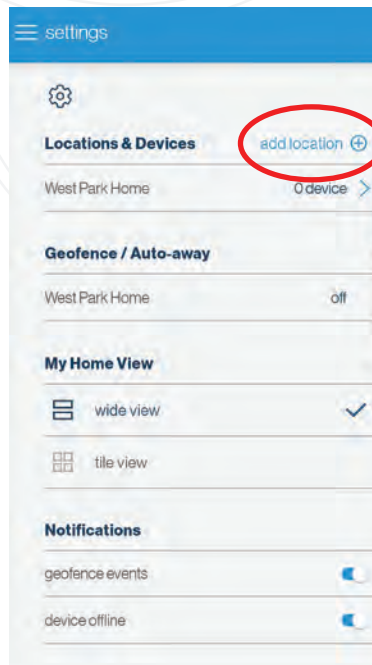
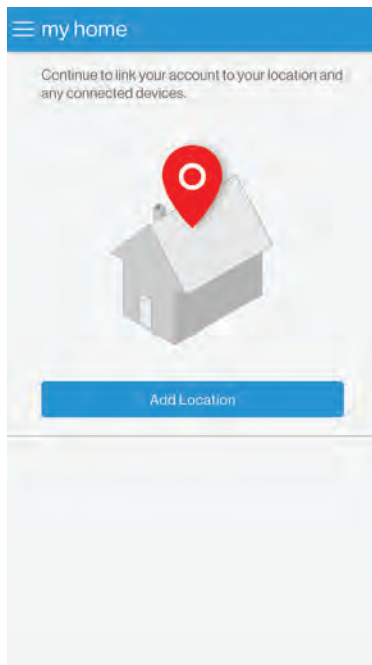


5. Enter the verification code in the app and select "Confirm Code". When successful, you will next be asked about enabling biometrics, and then navigated to the "my home" screen.



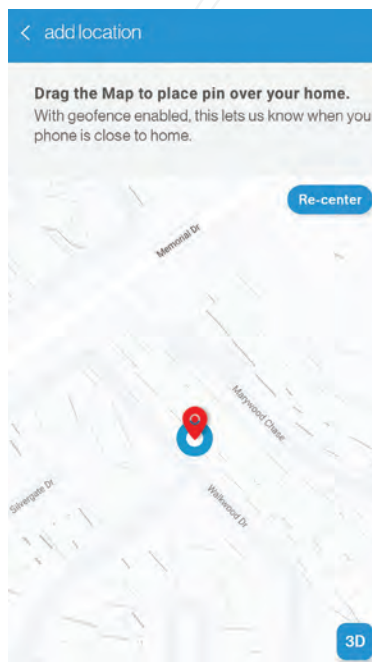
To learn more about operating the Daikin *One* lite smart thermostat, visit our how-to videos at: <https://daikinone.com/product/one-lite-smart-thermostat>

# Add location name and address to the Daikin *One* home app

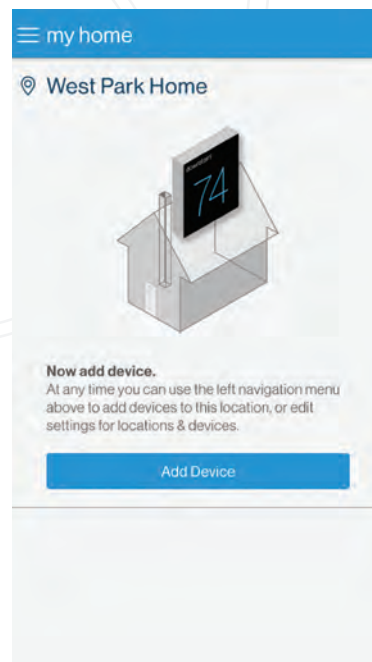


1. After creating a Daikin *One* home account, you will be prompted to add a location. If you already have a location and want to add another, select "add location" on the "settings" screen.

2. Enter the location name and address, then select "Next".

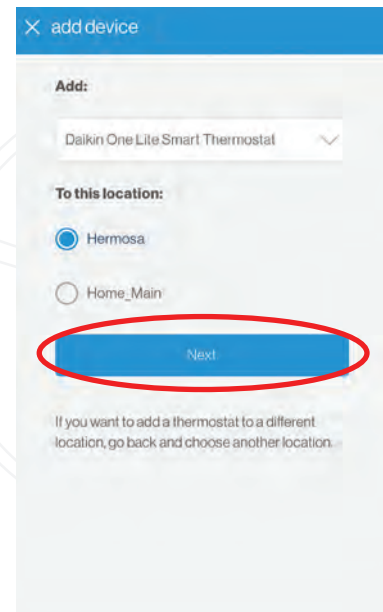
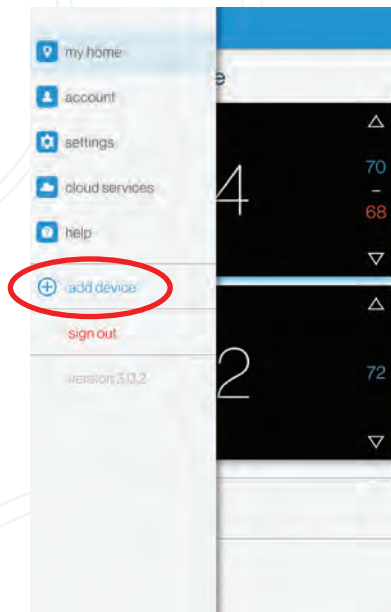


3. Verify the location address on the map. Move the pin to the correct location if needed, then select "Save This Location".



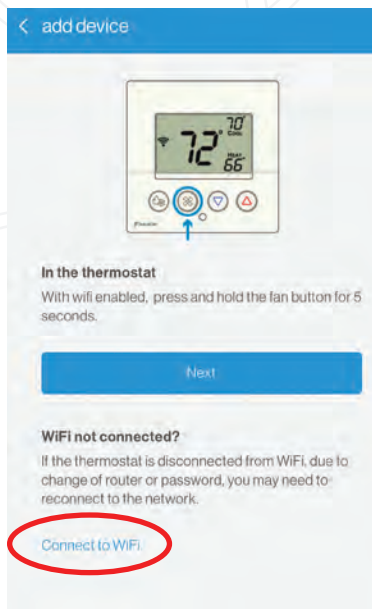
4. You will be navigated to the "my home" page where you can add a thermostat.

# Connect thermostat to Wi-Fi using the Daikin *One* home app

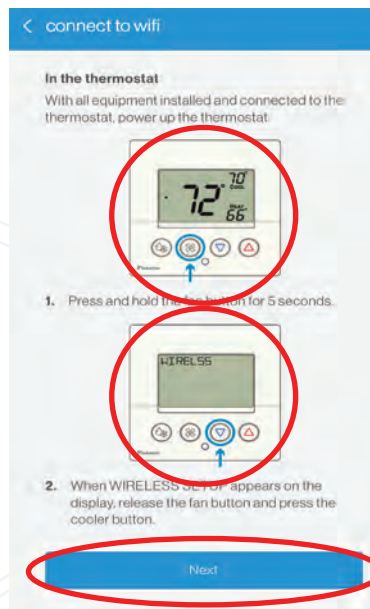


1. After creating a Daikin *One* home account and adding a location, select "Add Device" to add a thermostat. To add additional thermostats, select "add device" found in drop down menu at the top left of the "my home" screen.

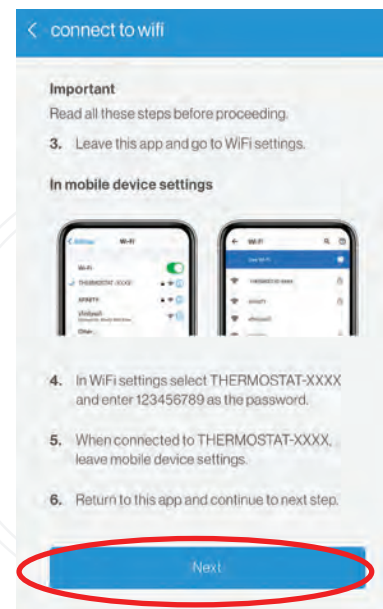
2. Select "Daikin *One* lite smart thermostat" from the list, select a location, and press "Next".



3. Select "Connect to Wi-Fi".

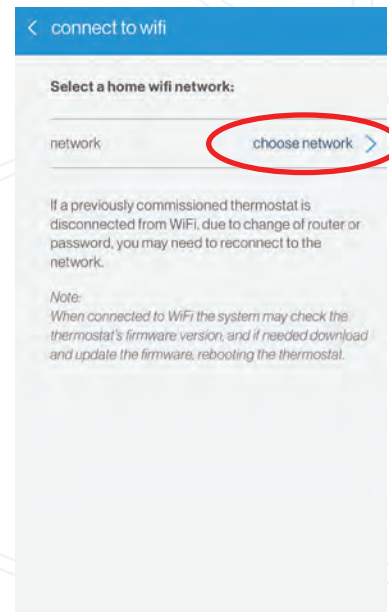
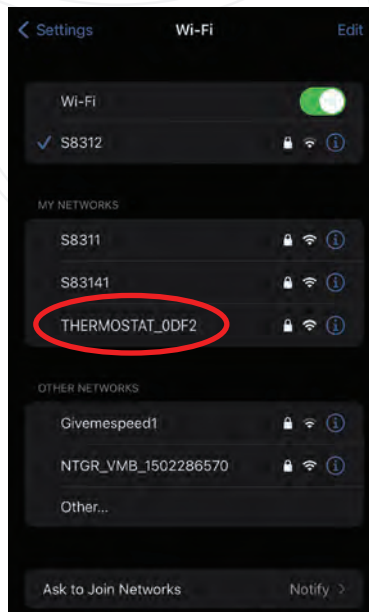
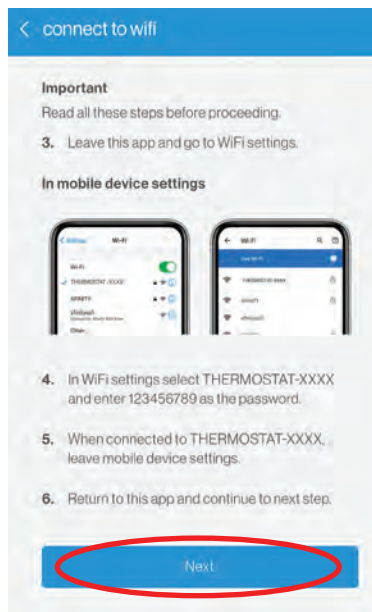


4. Press the fan button for 5 seconds, then press the cooler/down button to put the thermostat in "AP MODE"; then return to the app and select "Next".



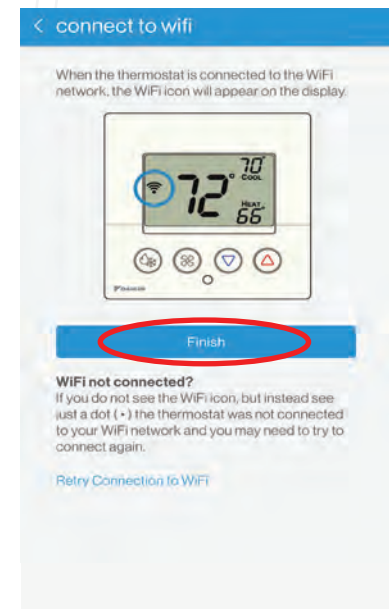
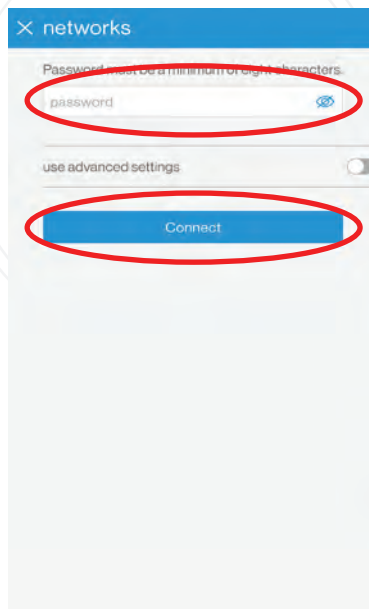
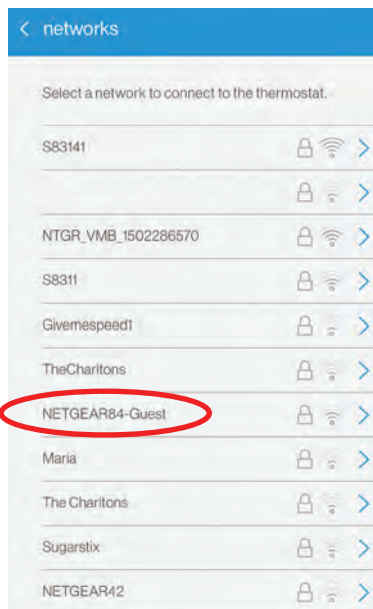
5. Follow these instructions to directly connect the phone Wi-Fi to the thermostat, then select "Next" in the app.

# Connect thermostat to Wi-Fi using the Daikin *One* home app (Continued)



5. Follow these instructions to go to your phone's Wi-Fi settings to connect the phone Wi-Fi directly to the thermostat, then return to the Daikin *One* home app and select "Next".

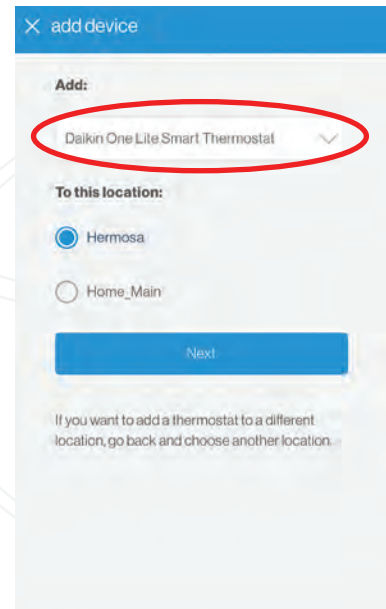
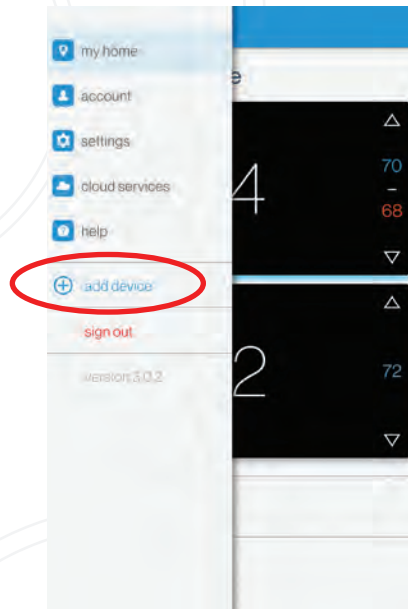
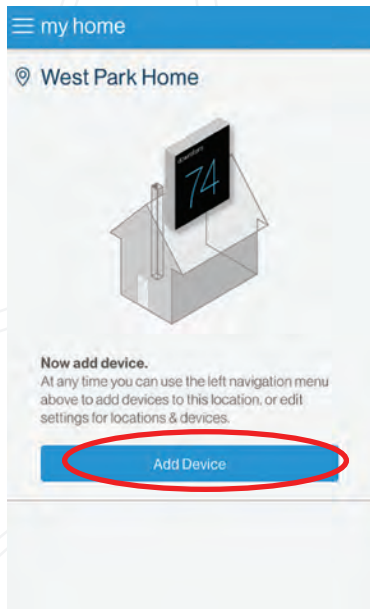
6. Select "choose network", then select the appropriate Wi-Fi network from the list.



7. Enter the password and select "Connect".

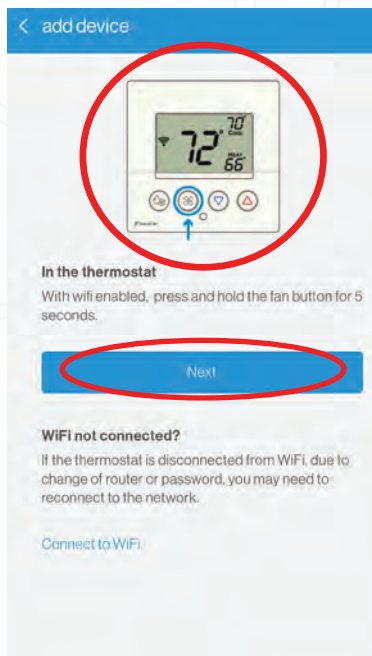
8. Confirm that the Wi-Fi icon appears on the thermostat screen, then select "Finish".

# Connecting to the Daikin *One* home app

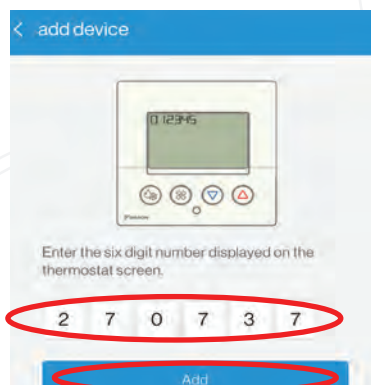


1. After creating a Daikin *One* home account and connected the Lite thermostat to Wi-Fi, select "Add Device" from the "my home" screen. To add additional thermostats, select "add device" found in drop down menu at the top left of the "my home" screen.

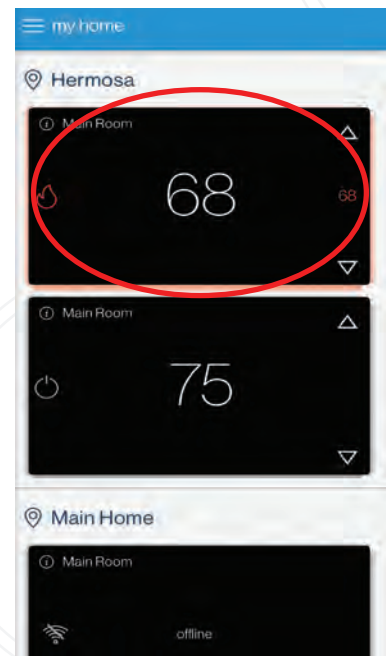
2. Select "Daikin *One* lite smart thermostat" from the list, select a location, and press "Next".



4. Press the up/warmer button on the thermostat to display the 6-digit pairing code, then return to the app and select "Next".



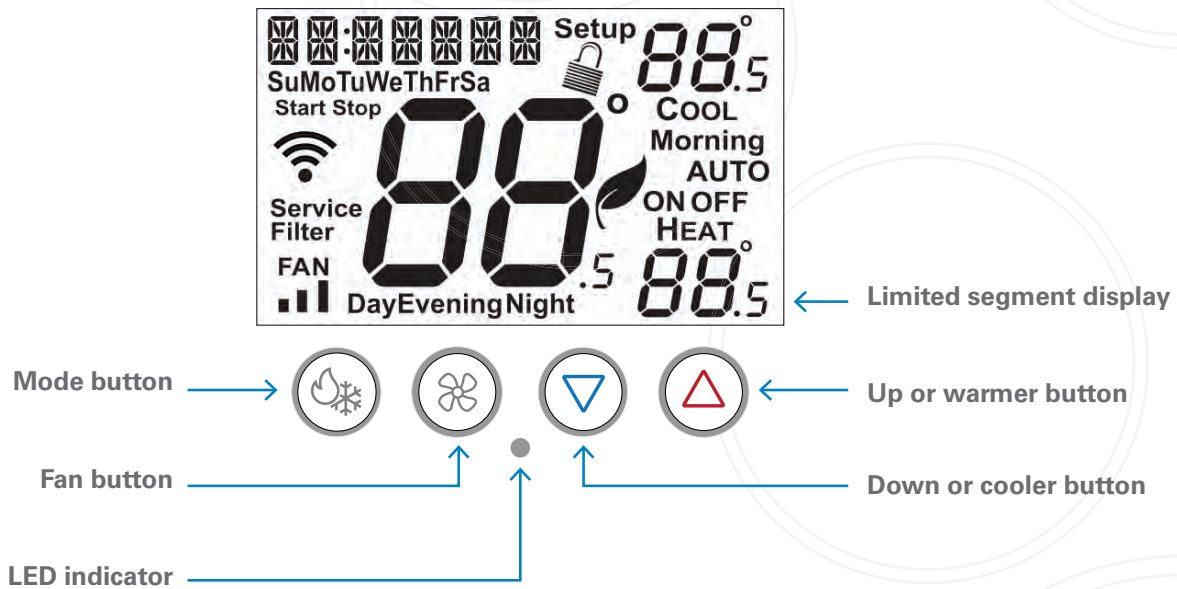
5. Enter the pairing code and select "Add".



6. Confirm that the newly added thermostat appears on the "My Home" screen.

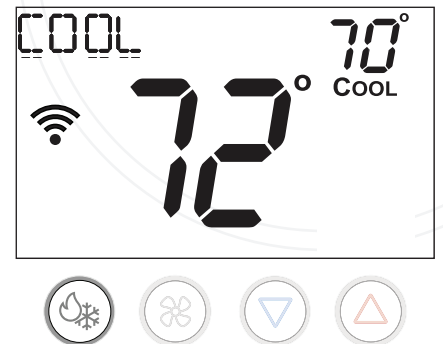
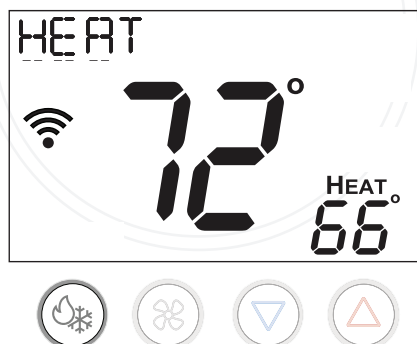
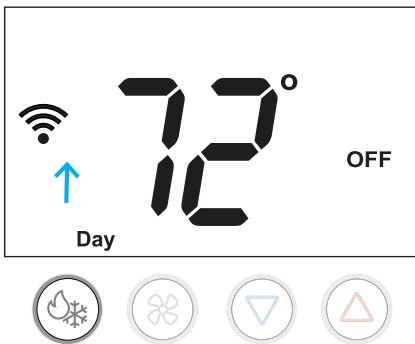
You are now able to control your thermostat from your phone using the Daikin *One* home app!

# Control / Interface Overview



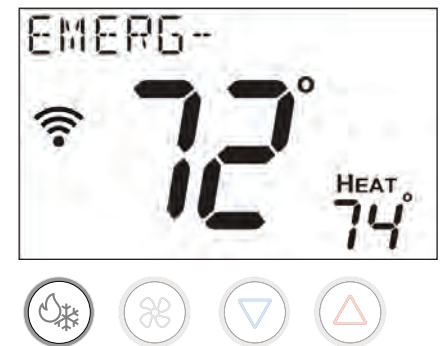
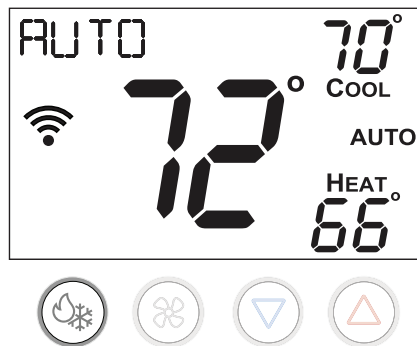
## Mode Selection

### On-screen display



**Press the mode button cycles through available modes.**

As each mode is selected, its name appears in the upper left corner of the display. The text disappears 1 second after the mode is selected, but the relevant setpoints for the selected mode are always displayed.





# Adjust Setpoint

## Increasing the temperature

Press the up arrow button to raise the setpoint.

## Decreasing the temperature

Press the down arrow button lowers the setpoint.

## Raising and lowering the setpoint

Button presses raises and lowers the temperature by 1 degree when using Fahrenheit degree units. When using Celsius the temperature raises and lowers by 0.5 degrees.

**Note:** For cool only mini and multi-split systems, heat mode, auto mode, emergency heat mode, and all heat setpoints including those for away mode and schedule mode are hidden.

## Off mode



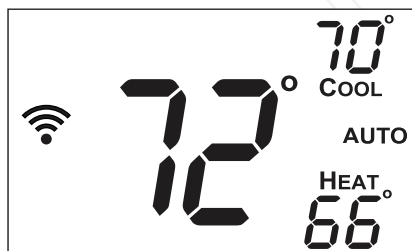
**Press the up and down buttons** have no effect when the system is off

## Heat or cool mode



**When set to heat or cool modes,** pressing the up arrow button raises the setpoint. Pressing the down arrow button lowers the setpoint.

## Auto mode

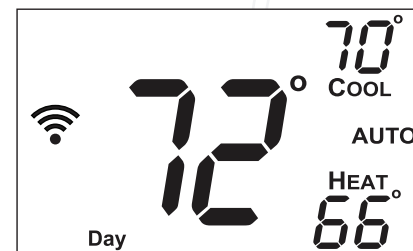


**When set to auto mode,** pressing the up arrow button increases both the heat and cool setpoints. Pressing the down arrow button decreases both the heat and cool setpoints.

To adjust heat or cool setpoints individually, switch to heat or cool mode, adjust the setpoint, and then return to auto mode.

When either the cool or heat setpoints hit the top/bottom of the scale the other setpoint will continue to adjust until the minimum difference between setpoints is hit.

## Schedule mode



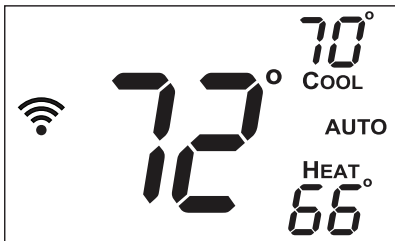
**When the schedule is enabled,** the up and down buttons raise and lower the setpoints as usual. Adjustments made this way remain in place until the next schedule event is reached.

For example, if a schedule has been set to heat to 68°F during the day period and 72°F during the evening period, changing the setpoint to 74°F at 4pm will override the day schedule. When the evening period begins, the system will revert back to the scheduled 72°F.

# Setting Fan Settings\*

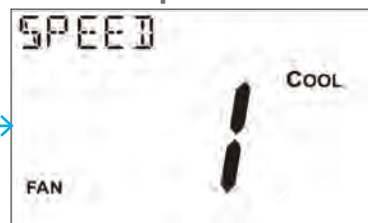
\*Fan settings can be changed more easily on the air quality screen of the Daikin *One* home app

## Primary display



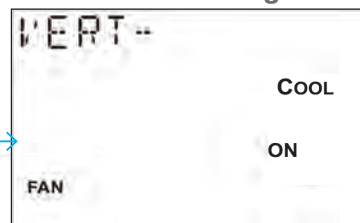
- » Pressing the fan button on the thermostat will turn the fan on and off.
- » Press and hold the fan button for 2 seconds to access the fan settings. Next, press either the mode or fan button to advance through each of the fan settings.
- » For the cool and heat fan speeds, press the up and down buttons to cycle through the available fan speeds of auto and 1 (low) through 5 (high).
- » The cool and heat louver position settings are available for indoor units that support these settings. When the vertical or horizontal louver swing is turned on, the louvers will oscillate in the relevant direction. A fixed direction can be set by turning the appropriate swing setting off when the louvers are in the desired position.
- » Press and hold the mode button for 2 seconds at any time to exit the home screen. The system will return to the home screen automatically after 2 minutes of inactivity.

### Cool Fan Speed



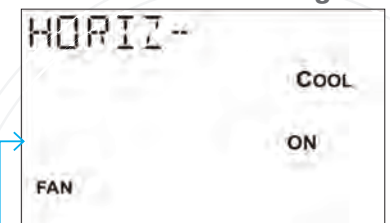
Press the up and down buttons to cycle through the available fan speeds of auto and 1 (low) through 5 (high). 1-5.

### Cool Vertical Swing



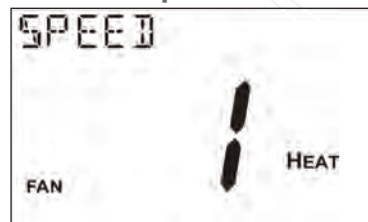
Press the up and down buttons to toggle the cool mode vertical swing off and on.

### Cool Horizontal Swing



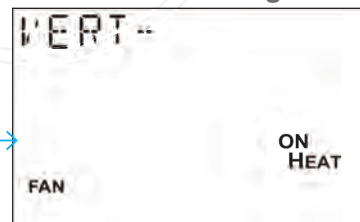
Press the up and down buttons to toggle the cool mode horizontal swing off and on.

### Heat Fan Speed



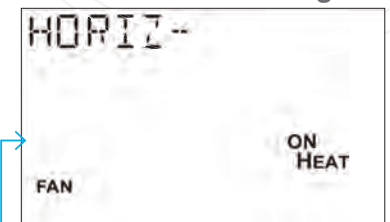
Press the up and down buttons to cycle through available auto speeds 1-5.

### Heat Vertical Swing



Press the up and down buttons to toggle the heat mode vertical swing off and on.

### Heat Horizontal Swing

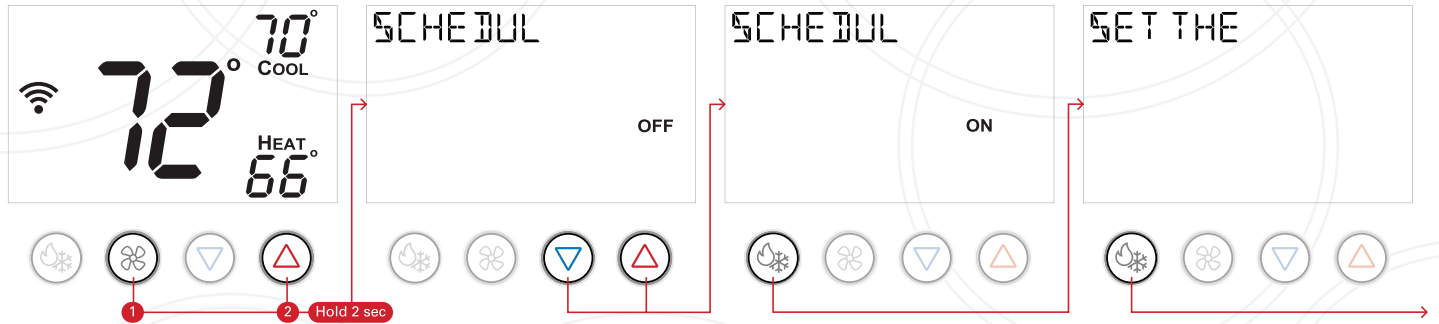


Press the up or down buttons to toggle the heat mode horizontal swing off and on.  
Press the fan button to return to the home screen.

# Setting the Schedule — Step 1

## Setting the daily schedule

Setting up a daily schedule can be accomplished more easily using the Daikin *One* home app. A schedule automatically uses different heat and/or cool setpoints for different days of the week and different periods of each day. The schedule repeats each week, and can have up to 4 schedule events per day, each with its own heat and cool setpoints.



**Press and hold the fan and warmer (up) buttons for 2 seconds to enter schedule mode for programming a schedule.** While in schedule mode, press the mode button to advance through each setting for each day of the week and each time period of each day. To exit schedule mode and return to the home screen at any time, press and hold the mode button for 2 seconds. The system will return to the home screen automatically after 2 minutes of inactivity.

### Schedule Instructions

FSD cycles through the following:

SCHEDULE  
USE THE  
WARMER/  
COOLER  
BUTTONS  
TO  
ENABLE  
SCHEDULE  
USE THE  
MODE  
BUTTON  
FOR  
SETUP

### Schedule Instructions

Warmer (Up) and cooler (Down) buttons toggle schedule on and off.

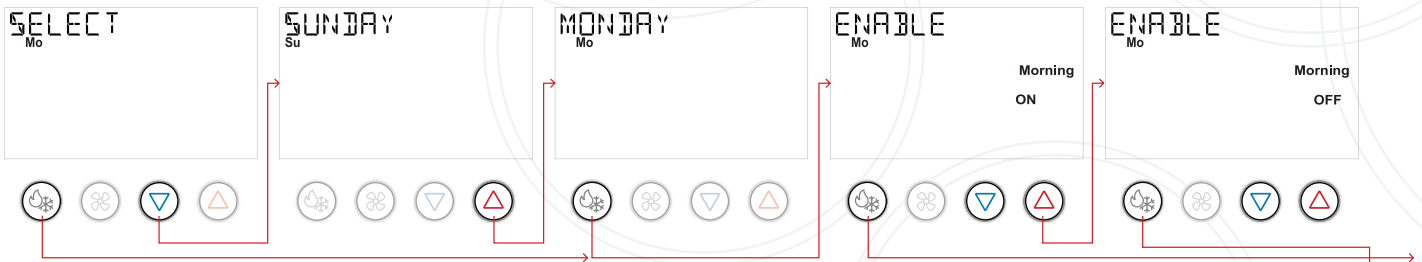
Mode button advances to the next step

### Schedule Instructions

FSD cycles through the following:

SET THE  
SCHEDULE  
USE THE  
WARMER/  
COOLER  
BUTTONS  
TO  
CYCLE  
THROUGH  
THE  
OPTIONS  
USE THE  
MODE  
BUTTON  
TO  
ADVANCE  
AND  
CONFIRM  
THROUGH  
THE

# Setting the Schedule — Step 2



**Choose day of the week instructions.** Press the mode warmer (up) or cooler (down) buttons to advance to next step.

FSD cycles through the following twice, then automatically advances to the next screen:

```
SELECT
DAY OF
WEEK TO
SCHEDULE
```

**Choose day of the week.** Warmer (up) button selects the next day, cooler (down) button selects the previous day.

FSD displays the name of the currently selected day.

```
MONDAY
TUESDAY
WED
THURS
FRIDAY
SAT
SUNDAY
```

**Press the mode button to advance to the next step.**

**Enable Morning event** Warmer (up) and cooler (down) buttons toggle the event on and off.

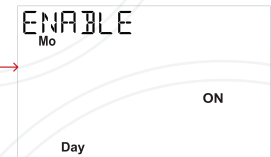
Press the mode button when the event is on to set the event start time.

Day of the week being scheduled appears below the FSD.

FSD cycles through:

```
MONDAY
MORNING
ENABLE
```

**Disable morning event** Press mode when event is off to advance to configure the next event.



# Setting the Schedule — Step 3

**Set morning event.**  
Warmer (up) and cooler (down) buttons adjust the start time.  
Day of the week being scheduled appears below the FSD.

**Set morning event cool setpoint.**  
Warmer (up) and cooler (down) buttons adjust the setpoint.  
Day of the week being scheduled appears below the FSD.  
FSD cycles through the following:  
COOL  
SET-  
POINT

**Set morning event heat setpoint.**  
Warmer (up) and cooler (down) buttons adjust the setpoint.  
Day of the week being scheduled appears below the FSD.  
FSD cycles through the following:  
HEAT  
SET-  
POINT

Repeat steps for day event.

**Enable day event.**

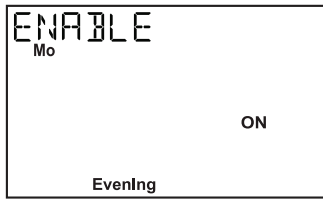
**Set day event start time.**

**Set day event cool setpoint.**

**Set day event heat setpoint.**

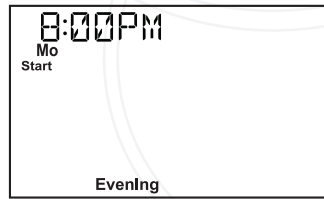
**Repeat steps for "evening" event.**

# Setting the Schedule — Step 4

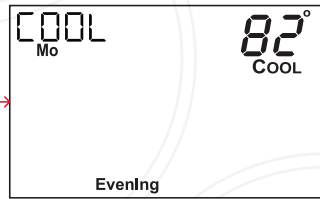


Enable evening event.

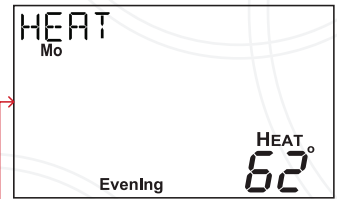
Enable evening event.



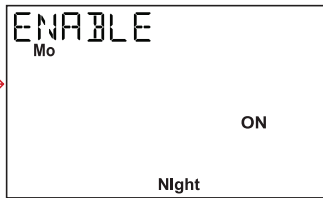
Set evening event start time.



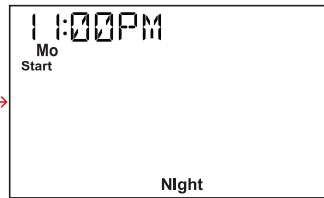
Set evening event cool setpoint.



Enable evening event heat setpoint



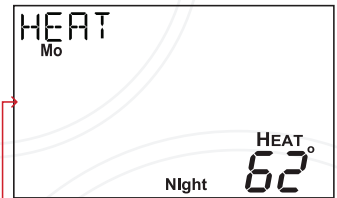
Enable night event.



Set night event start time.

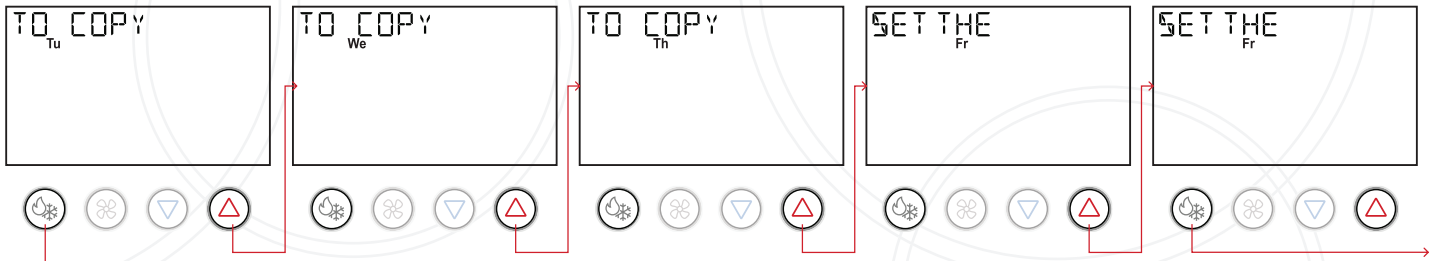


Set night event cool setpoint.



Enable night event heat setpoint

# Setting the Schedule — Step 5



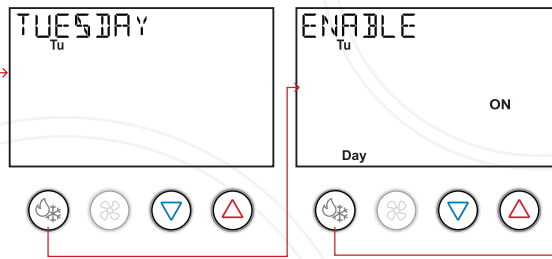
## Copy day

Press the mode button to return to the screen where you select a day of the week to schedule.

Press the warmer(up) button to copy the events from the day you just completed to the next day and advance one day. For example, if you complete Monday you can press warmer (up) button to copy those settings to Tuesday. You may then press warmer (up) again to copy those settings to Wednesday and so on.

FSD cycles through the following:

```
PRESS
MODE TO
PROGRAM
ANOTHER
DAY OR
WARMER
TO COPY
MONDAY
TO
ANOTHER
DAY
```



## Choose day of the week.

Warmer (up) button selects the next day, cooler (down) button selects the previous day.

FSD displays the name of the currently selected day.

```
MONDAY
TUESDAY
WED
THURSDAY
FRIDAY
SAT
SUNDAY
```

Press the MODE button for two seconds to return the thermostat UI to the primary screen.

Continue programming individual days.

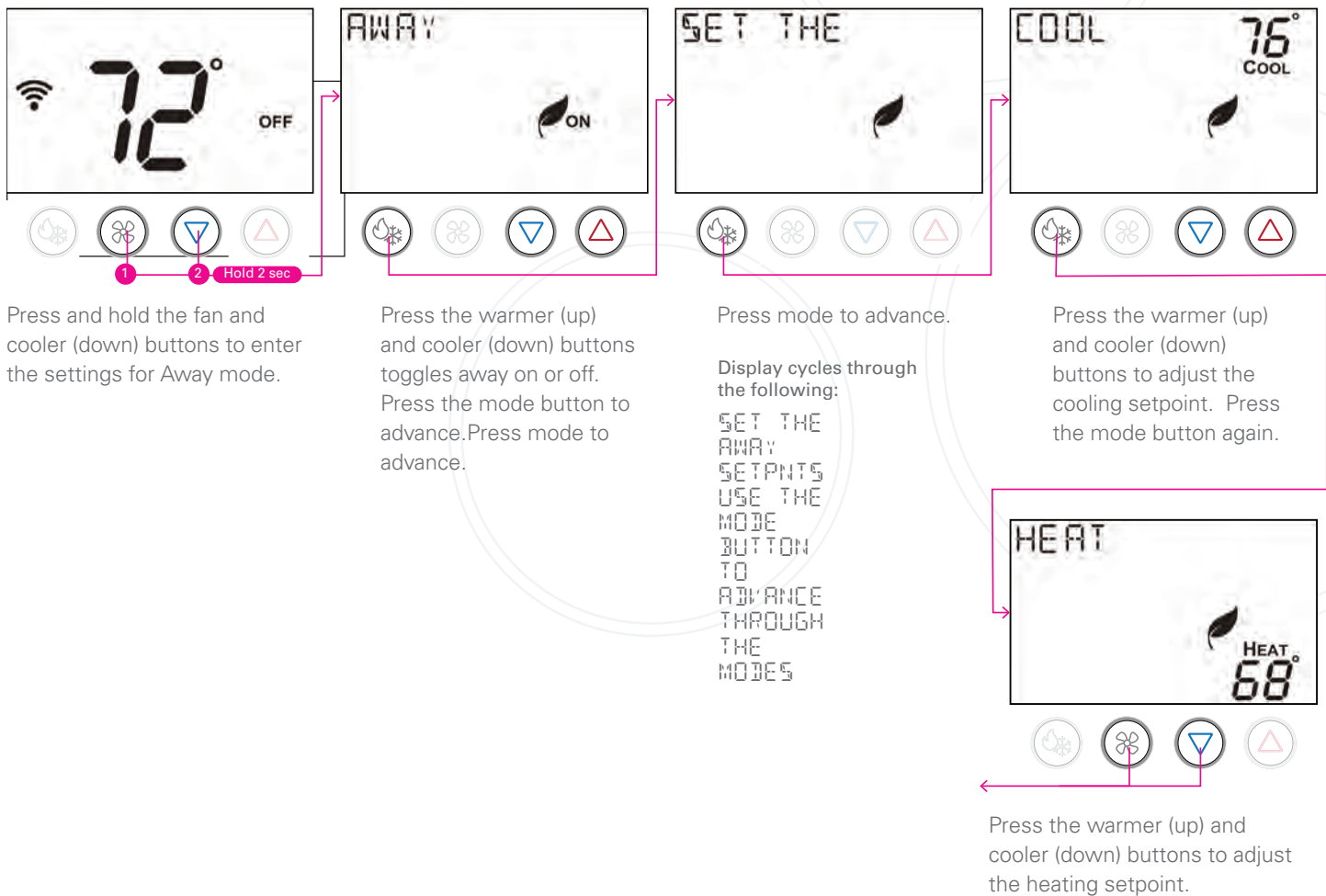
# Setting Away Setpoints

## Setting away setpoints

The Away setpoints allow you to save energy by limiting heating and cooling when you are away from home. The Away setpoints are also used when geofencing is enabled in the Daikin One Home App, and can be more easily setup in the app..

- » Press and hold the mode and cooler “down” buttons to enter the settings for Away mode.
- » Press the the mode button to advance through the away mode settings, and use the warmer (up) and cooler (down) buttons to change each setting.
- » To exit to the home screen at any time, press and hold the mode button for 2 seconds. The system will return to the home screen automatically after 2 minutes of inactivity.

## Primary Display

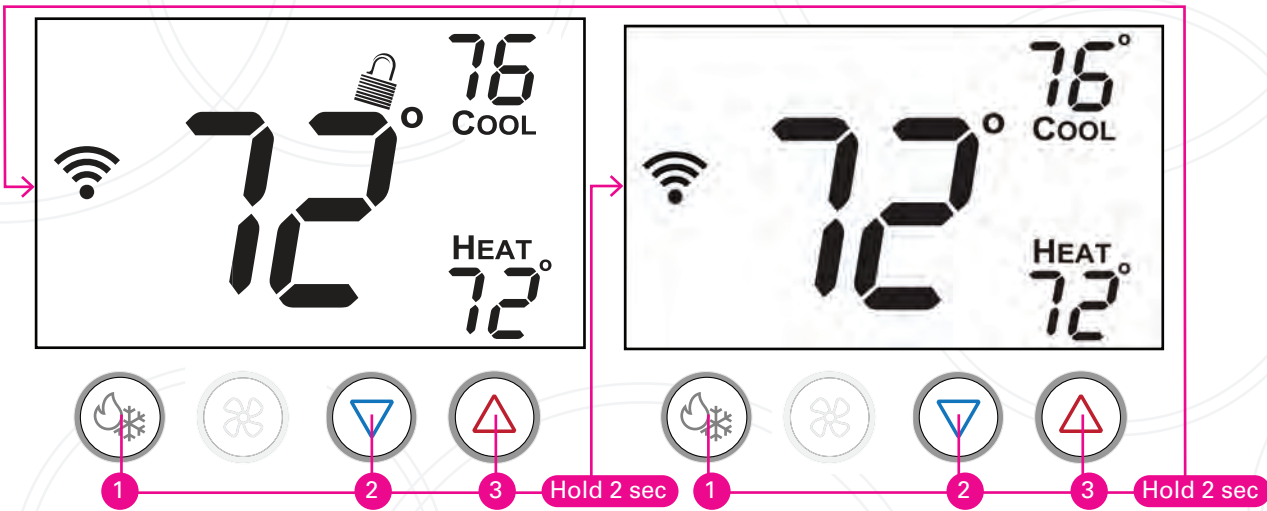




# Locking/Unlocking the Keypad

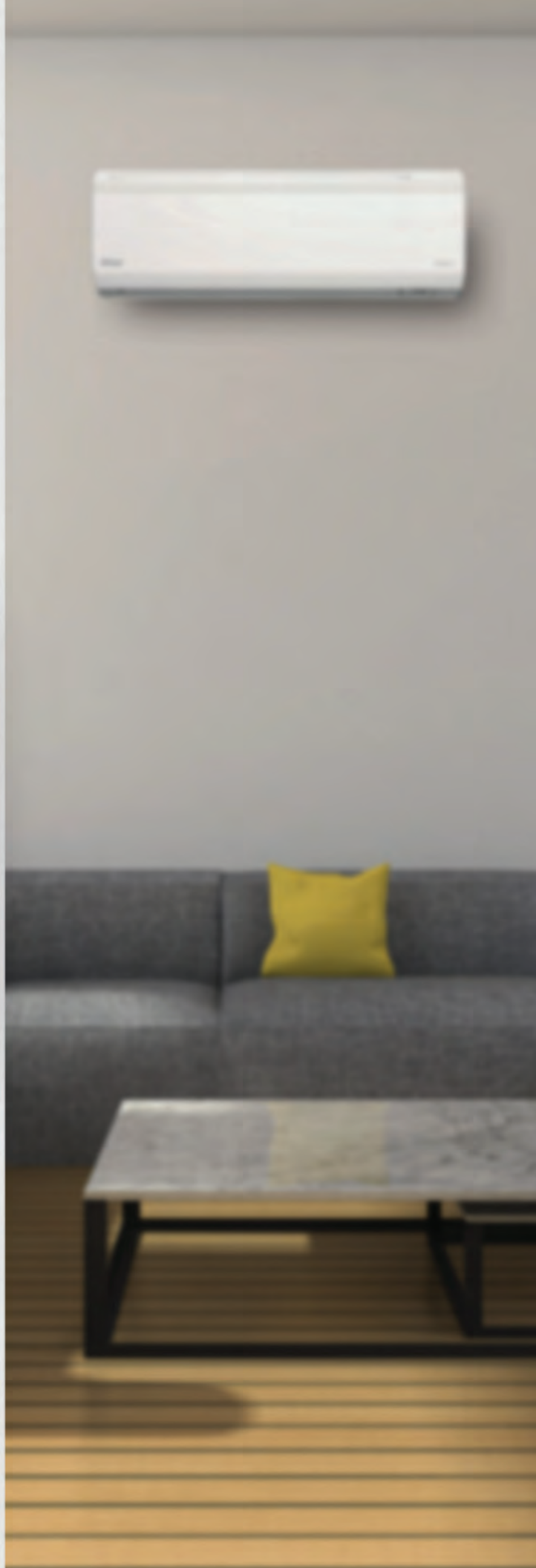
## Setting the daily schedule

To prevent unauthorized use of the thermostat, the front panel buttons may be disabled by locking them.



To disable, or “lock” the keypad, press and hold the mode button. While holding the mode button, press the warmer (up) and cooler (down) buttons together, for two seconds. The lock icon will appear on the display, then release the buttons.

To unlock the keypad, press and hold the mode button. While holding the mode button, press the warmer (up) and cooler (down) buttons together, for two seconds. The lock icon will disappear from the display, then release the buttons.



# Important Notes

## NOTE:

This device complies with Part 15 of the FCC Rules. Operation is subject to the following two conditions: (1) this device may not cause harmful interference, and (2) this device must accept any interference received, including interference that may cause undesired operation. Changes or modifications not expressly approved by Daikin could void the user's authority to operate the equipment.

This equipment has been tested and found to comply with the limits for a Class B digital device, pursuant to part 15 of the FCC Rules. These limits are designed to provide reasonable protection against harmful interference in a residential installation. This equipment generates uses and can radiate radio frequency energy and, if not installed and used in accordance with the instructions, may cause harmful interference to radio communications. However, there is no guarantee that interference will not occur in a particular installation. If this equipment does cause harmful interference to radio or television reception, which can be determined by turning the equipment off and on, the user is encouraged to try to correct the interference by one or more of the following measures:

- » Reorient or relocate the receiving antenna.
- » Increase the separation between the equipment and receiver.
- » Connect the equipment into an outlet on a circuit different from that to which the receiver is connected.
- » Consult the dealer or an experienced radio/ TV technician for help.

This device contains license-exempt transmitter(s)/receiver(s) that comply with Innovation, Science and Economic Development Canada's license-exempt RSS(s). Operation is subject to the following two conditions:

1. This device may not cause interference.
2. This device must accept any interference, including interference that may cause undesired operation of the device.

## REMARQUE:

Cet équipement a été testé et déclaré conforme aux limites imposées aux appareils numériques de classe B, conformément à la section 15 du règlement de la FCC. Ces limites sont conçues pour fournir une protection raisonnable contre les interférences nuisibles dans une installation résidentielle. Cet équipement génère, utilise et peut émettre des fréquences radio et, s'il n'est pas installé et utilisé conformément aux instructions, il peut causer des interférences nuisibles aux radiocommunications. Cependant, rien ne garantit que des interférences ne se produiront pas dans une installation particulière. Si cet équipement provoque des interférences nuisant à la réception de la radio ou de la télévision, ce qui peut être déterminé en éteignant et en rallumant l'équipement, l'utilisateur est invité à tenter de corriger les interférences en appliquant l'une ou plusieurs des mesures suivantes:

- » Réorienter ou déplacer l'antenne de réception.
- » Augmenter la distance entre l'équipement et le récepteur.
- » Connecter l'équipement à une prise d'un circuit différent de celui auquel le récepteur est connecté.
- » Consulter le concessionnaire ou un technicien expérimenté en radio/télévision pour obtenir de l'aide.

L'émetteur/récepteur exempt de licence contenu dans le présent appareil est conforme aux CNR d'Innovation, Sciences et Développement économique Canada applicables aux appareils radio exempts de licence. L'exploitation est autorisée aux deux conditions suivantes:

1. L'appareil ne doit pas produire de brouillage;
2. L'appareil doit accepter tout brouillage radioélectrique subi, même si le brouillage est susceptible d'en compromettre le fonctionnement



FOR ADDITIONAL  
RESOURCES AND  
INSTRUCTIONAL VIDEOS,  
SCAN CODE OR VISIT:

[WWW.DAIKINONE.COM](http://WWW.DAIKINONE.COM)



If you encounter any issues or would like assistance with setting up your Daikin *One* lite smart thermostat, please contact Daikin support at **1-855-Daikin1** and select **OPTION SEVEN** to be connected with our thermostat support team.

#### ADDITIONAL INFORMATION

Before purchasing this appliance, read important information about its estimated annual energy consumption, yearly operating cost, or energy efficiency rating that is available from your retailer.



Our continuing commitment to quality products may mean a change in specifications without notice.  
© 2023 **DAIKIN COMFORT TECHNOLOGIES NORTH AMERICA, INC.**  
Houston, Texas · USA · [www.daikincomfort.com](http://www.daikincomfort.com) or [www.daikinac.com](http://www.daikinac.com)