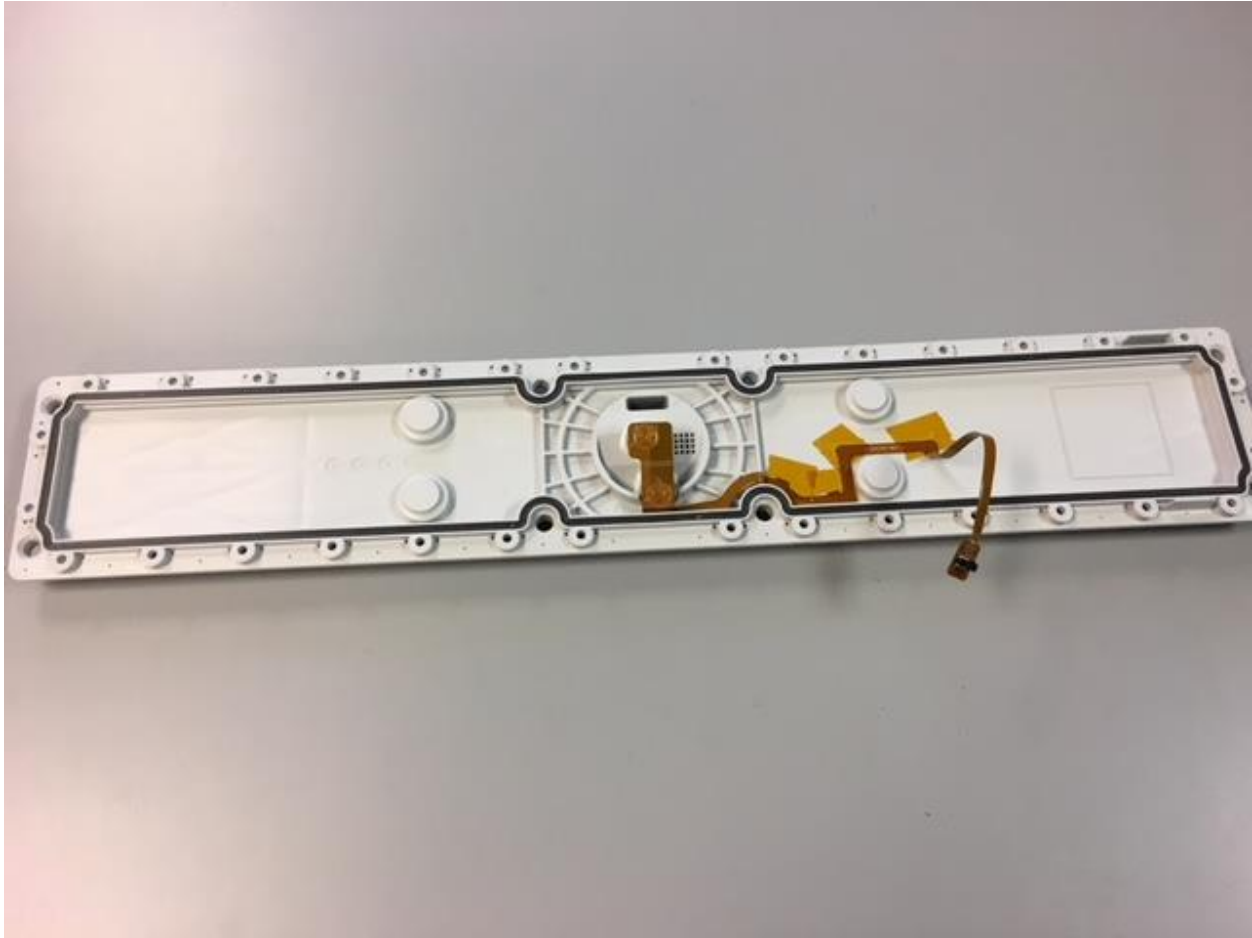


FULLY ASSEMBLED UNIT OPENED. SHOWS CABLING, LABELING AND THE CCAs AND BATTERY PACK

66014702 TRANSDUCER AND MOUNTING SUBASSEMBLY.

This subassembly has some gaskets, foam, flex cable and transducers. The BOM is 66014702_D.

The following picture shows this subassembly



INTERNAL/BOTTOM ASSEMBLY WITH TRANSDUCERS, CABLING AND GASKETS

66014802 BOARDS AND CABLE SUBASSEMBLY

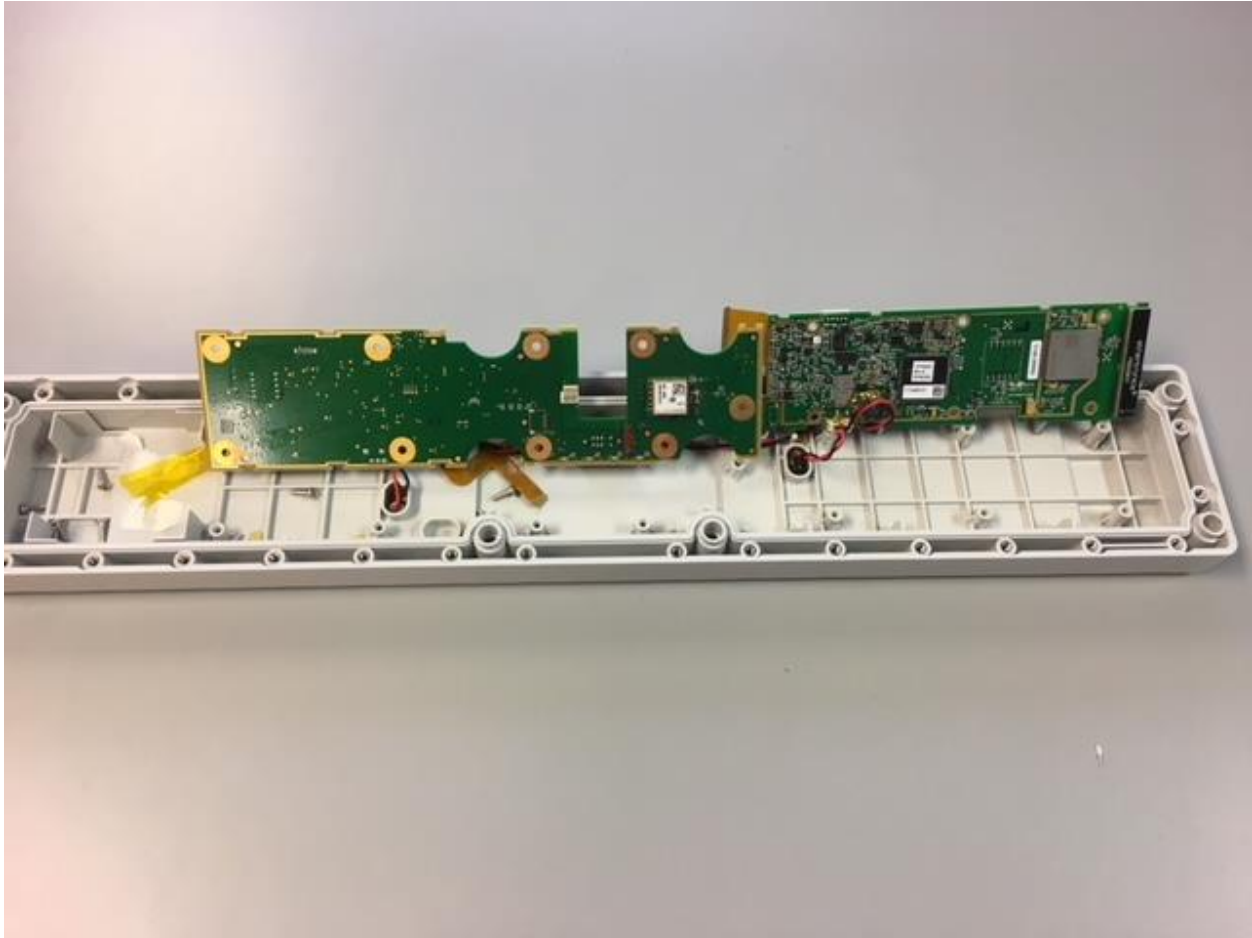
This subassembly contains the outer/top part of the enclosure with the CCAs(circuit card assemblies) attached to the enclosure. Cables interconnect the boards. There is also a battery. The BOM for this subassembly is 66014802_D. The following pictures show these item. The last pictures are showing the “back” side of the boards.



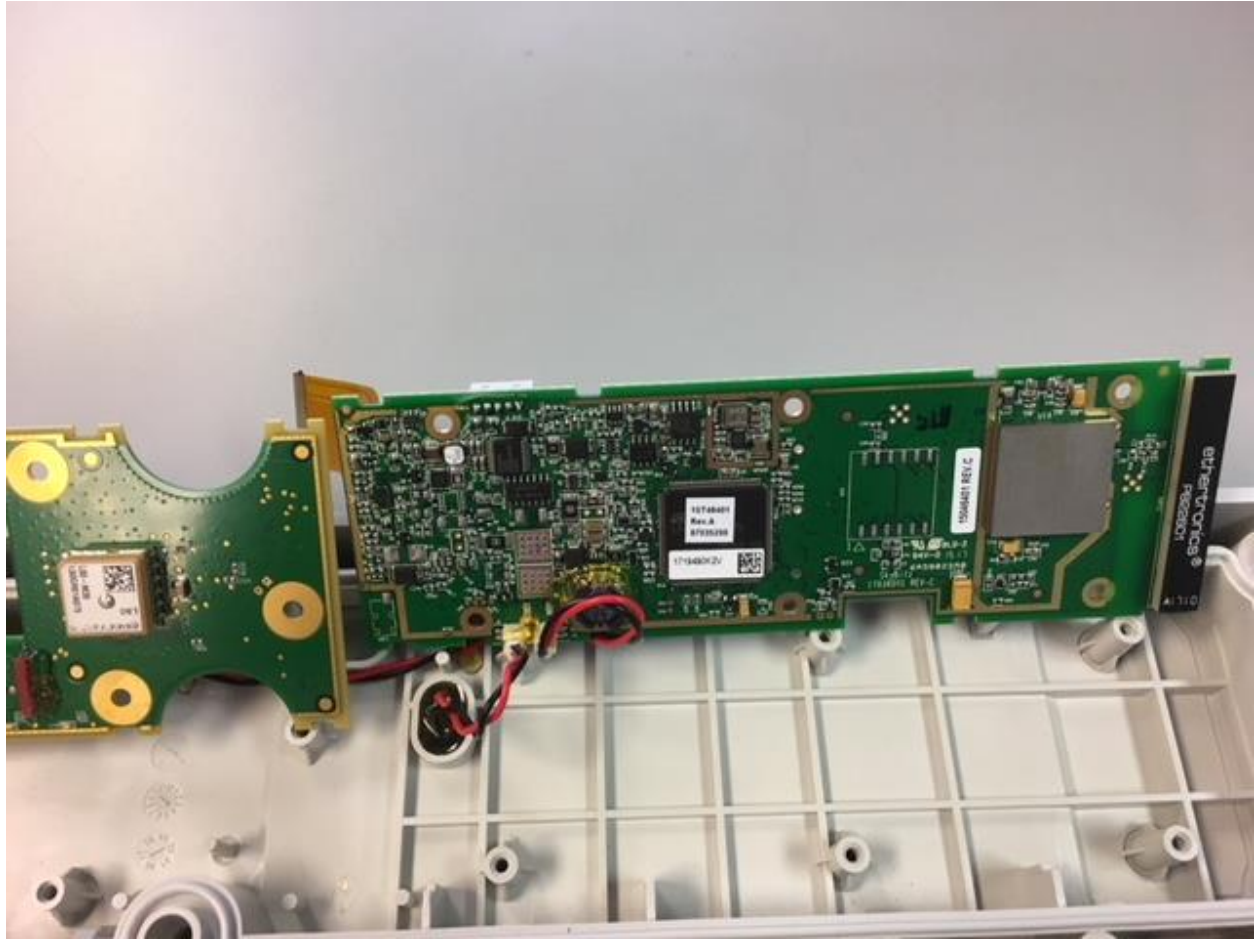
RAPTOR

COMBO

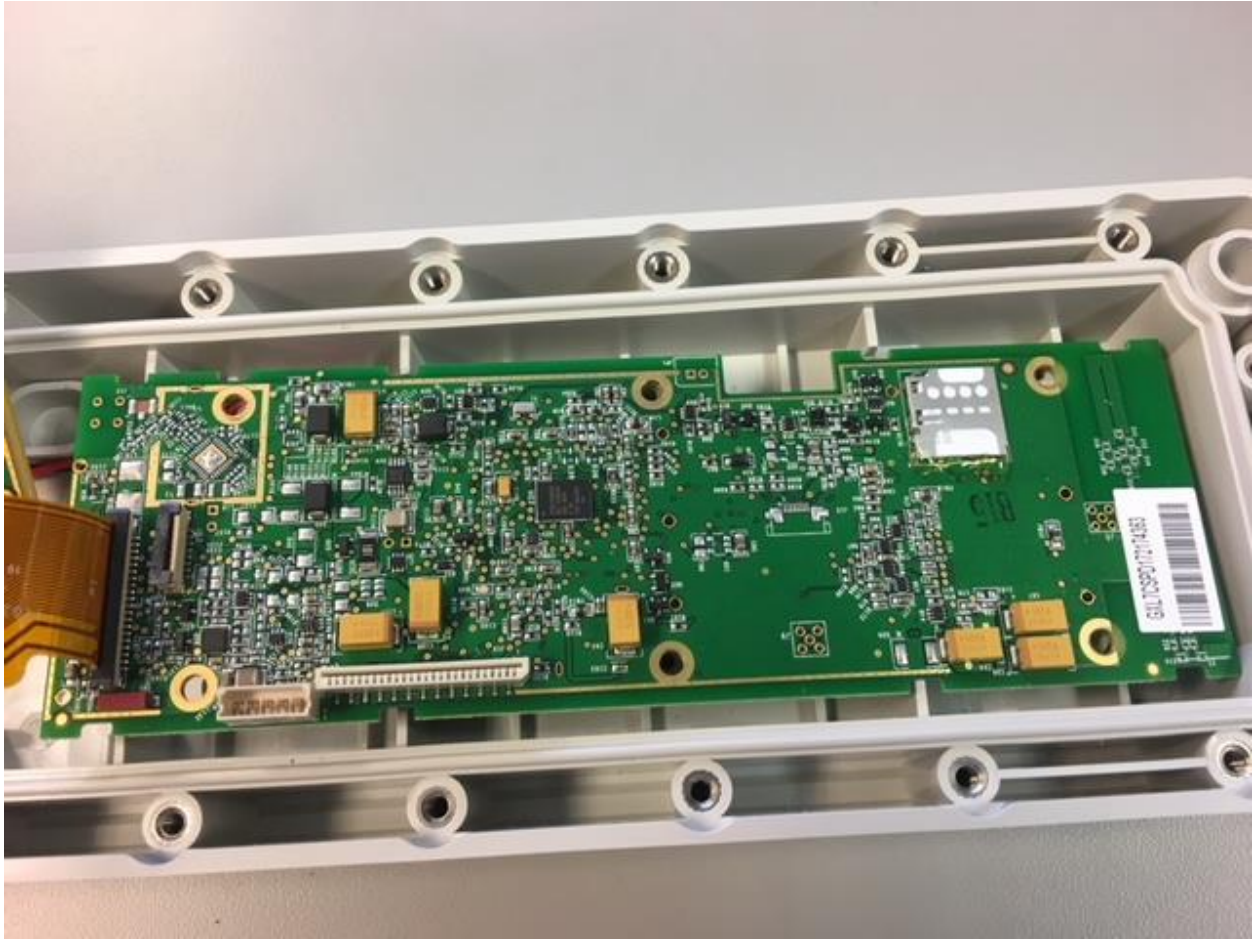
BATTERY



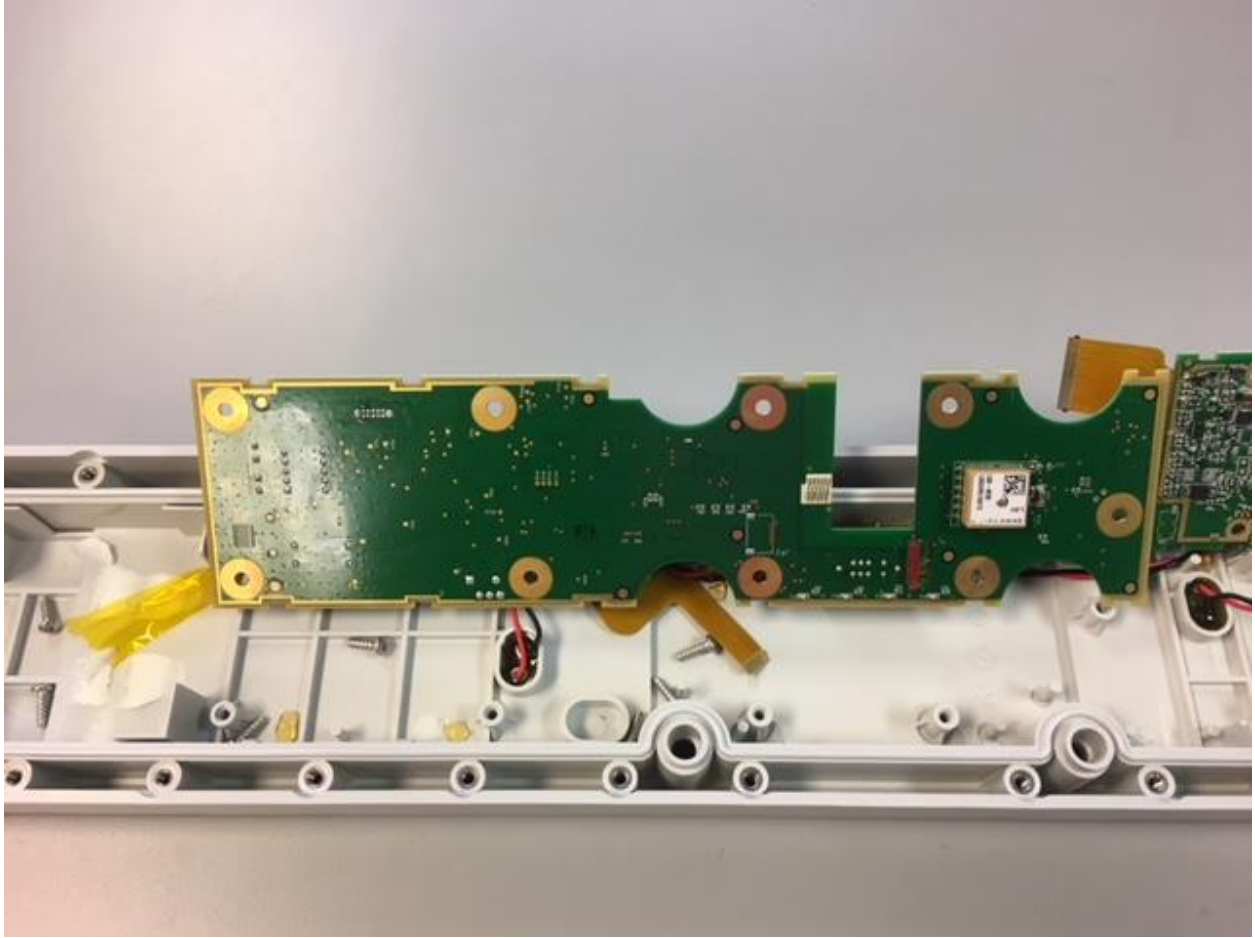
There are two main boards to this sub assembly. A raptor (board on right, **15046401**) and a cargo sensor board(on left **15046701**). The 15046401 BOM is 15046401_D and the 15046701 BOM is 15046701_C, See pictures below. Raptor is first, then cargo sensor.



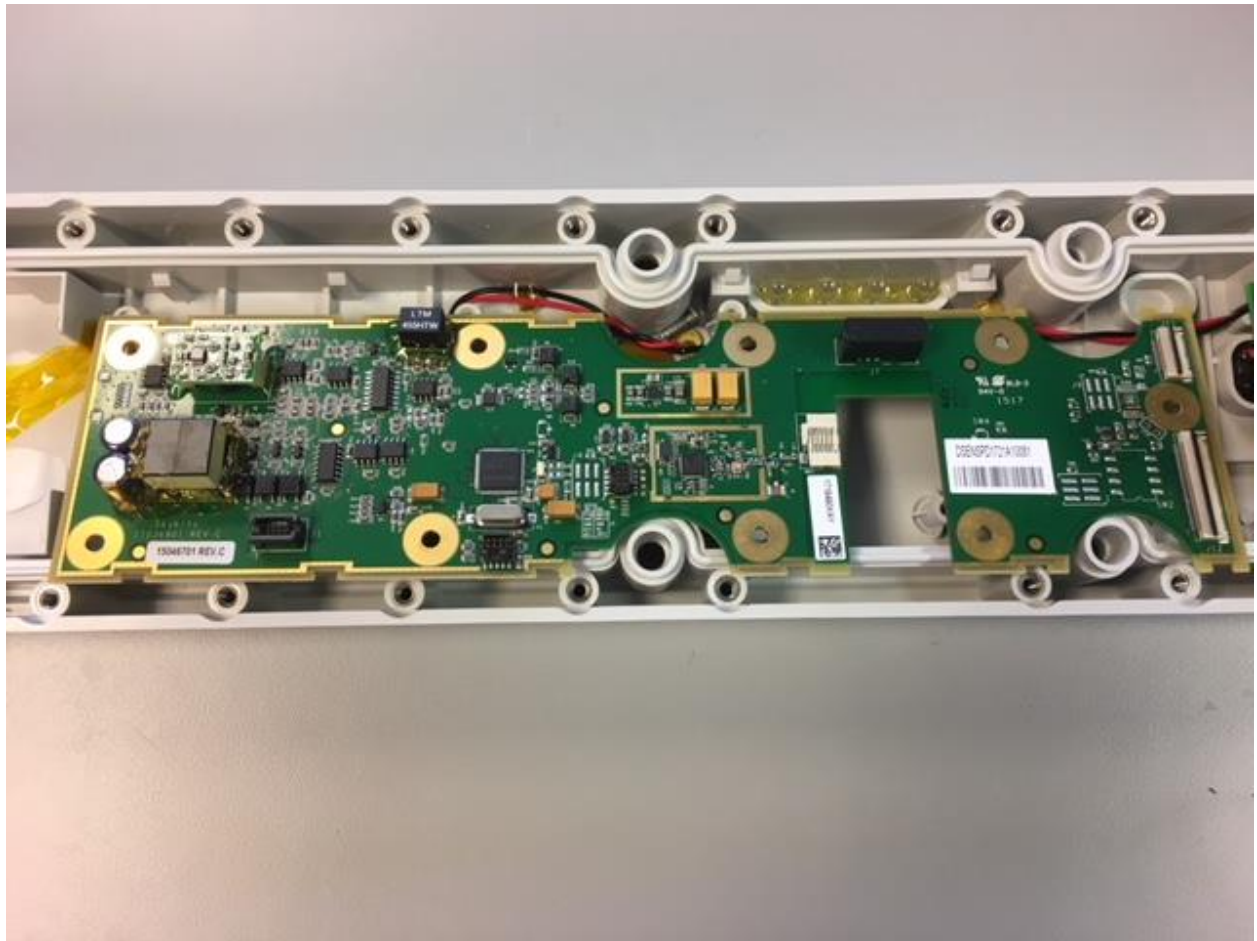
RAPTOR BOTTOM SIDE



RAPTOR TOP SIDE



COMBO BOTTOM SIDE



COMBO TOP SIDE

