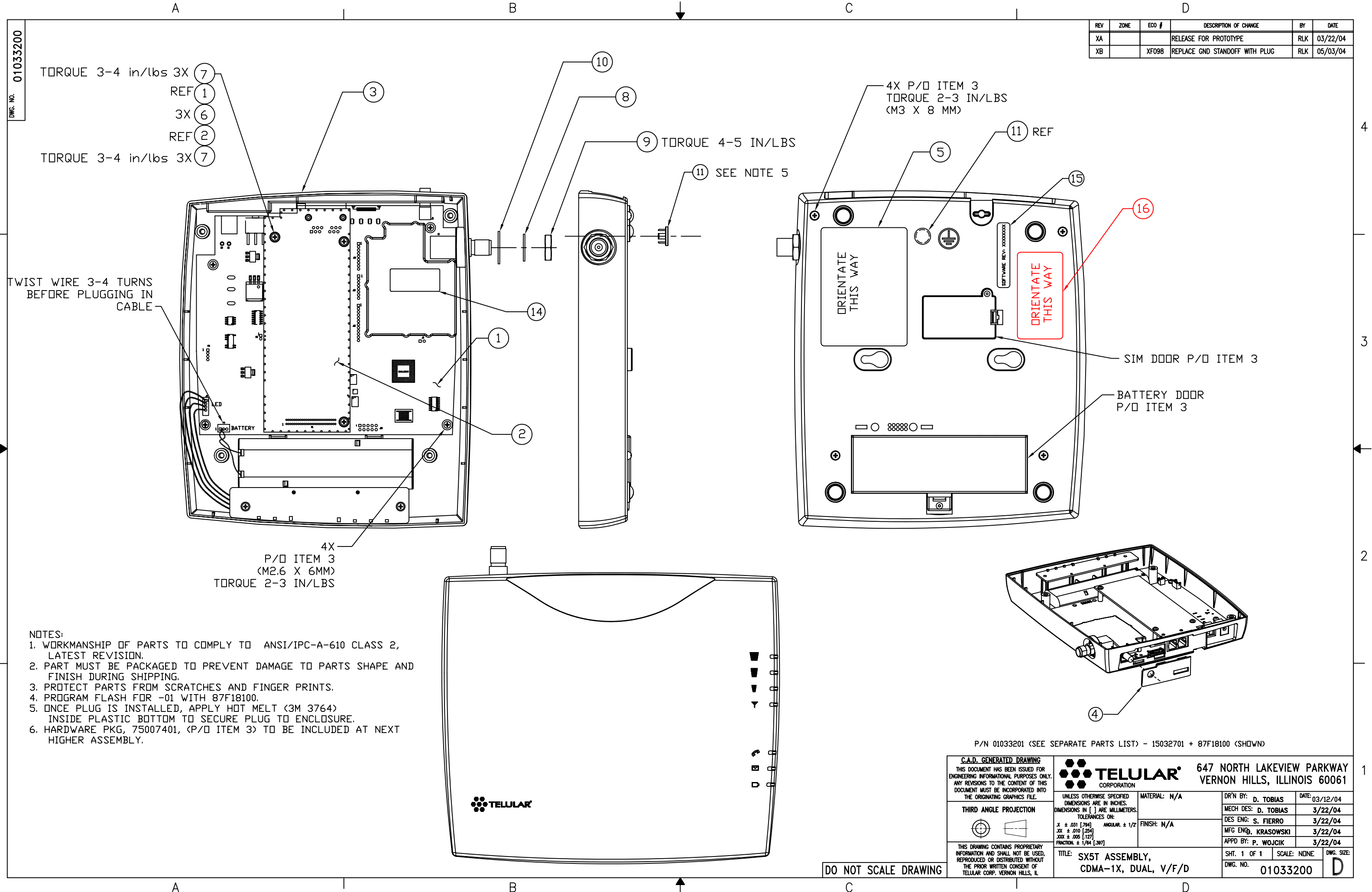


ASSEMBLY PARTS LIST

ASSEMBLY : PHONECELL SX5T ASSEMBLY, CDMA-1X, DUAL, GPS, V/F/D				ORIGINATOR : RAY KANCIUS			PAGE 1	OF 1
DRAWING NO : 01033200				APPROVED : DAVID TOBIAS			DATE : 03/15/04	
FIND NO:	QTY REQ			P/N	DESCRIPTION	REFERENCE DESIGNATOR		
			01					
1			1	15032701	CCA, CDMA-800/1900, ESN, GPS, SX5T			
2			1	15033601	CCA, SX5 DAUGHTERBOARD V/F/D			
3			1	75007301	KIT, FWT, SX5T			
4			1	77017502	COVER, CONFIG, GPS/MODULE, SX5T			
5			1	96030102	LABEL, LOGO/PATENTS/FCC, SX5T			
6			3	44005002	STANDOFF, 3/16 RND, 4-40 X 1/2 FEM AL			
7			6	25003839	SCREW, MACH, INTWS 4-40 X 3/16 PNH XREC	(EFFECTIVE 05/03/04 - ECO XF098)		
8			1	25020801	WASHER,INTL 1/2ID, 5/8OD,.022THK			
9			1	25020901	NUT, HEX 1/2-28, FOR TNC BULKHEAD			
10			1	25021302	WASHER, FLAT .505 X .755 X .015 STLZP			
11			1	44006201	PLUG, HOLE, 0.312 DIAMETER, NYLON, BLACK	(EFFECTIVE 05/03/04 - ECO XF098)		
12			A/R	85000701	ADHESIVE, HOT MELT, CLEAR, 3M #3764	(EFFECTIVE 05/03/04 - ECO XF098)		
13								
14			1	96030001	LABEL, CCA, SN/ESN (HEX), SX5P/T			
15			1	96030601	LABEL, SOFTWARE REVISION, SX5			
16			1	96029902	LABEL, SX5T PHONECELL ASSEMBLY			
17			REF	87F18100	REFLASH,CDMA1X GPS ESN, SX5T			
18			REF	88018100	SRO, CDMA-1X GPS ESN, SX5T			
19								
20								
21								
22								
23								
24								
25								
REV	DESCRIPTION	DATE	APPD					
XA	RELEASE FOR PROTOTYPE	03/22/04	RLK					
XB	ECO XF098	05/03/04	RLK					



REV	ZONE	ECO #	DESCRIPTION OF CHANGE	BY	DATE
XA			RELEASE FOR PROTOTYPE	RLK	03/22/04
XB		XF098	REPLACE GND STANDOFF WITH PLUG	RLK	05/03/04

DWG. NO. 01033200

4
3
2
1

4
3
2
1

TORQUE 3-4 in/lbs 3X (7)
REF (1)
3X (6)
REF (2)
TORQUE 3-4 in/lbs 3X (7)

TWIST WIRE 3-4 TURNS BEFORE PLUGGING IN CABLE

4X P/O ITEM 3 (M2.6 X 6MM) TORQUE 2-3 IN/LBS

- NOTES:
1. WORKMANSHIP OF PARTS TO COMPLY TO ANSI/IPC-A-610 CLASS 2, LATEST REVISION.
 2. PART MUST BE PACKAGED TO PREVENT DAMAGE TO PARTS SHAPE AND FINISH DURING SHIPPING.
 3. PROTECT PARTS FROM SCRATCHES AND FINGER PRINTS.
 4. PROGRAM FLASH FOR -01 WITH 87F18100.
 5. ONCE PLUG IS INSTALLED, APPLY HOT MELT (3M 3764) INSIDE PLASTIC BOTTOM TO SECURE PLUG TO ENCLOSURE.
 6. HARDWARE PKG, 75007401, (P/O ITEM 3) TO BE INCLUDED AT NEXT HIGHER ASSEMBLY.

DO NOT SCALE DRAWING

<p>C.A.D. GENERATED DRAWING THIS DOCUMENT HAS BEEN ISSUED FOR ENGINEERING INFORMATIONAL PURPOSES ONLY. ANY REVISIONS TO THE CONTENT OF THIS DOCUMENT MUST BE INCORPORATED INTO THE ORIGINATING GRAPHICS FILE.</p>		<p>647 NORTH LAKEVIEW PARKWAY VERNON HILLS, ILLINOIS 60061</p>	
<p>THIRD ANGLE PROJECTION</p>		<p>MATERIAL: N/A</p>	<p>DR'N BY: D. TOBIAS DATE: 03/12/04</p>
<p>UNLESS OTHERWISE SPECIFIED DIMENSIONS IN [] ARE MILLIMETERS. TOLERANCES ON:</p> <p>X ± .031 [794] XOX ± .010 [254] XOX ± .005 [127] FRACTION ± 1/64 [397]</p>		<p>FINISH: N/A</p>	<p>MECH DES: D. TOBIAS 3/22/04</p>
<p>THIS DRAWING CONTAINS PROPRIETARY INFORMATION AND SHALL NOT BE USED, REPRODUCED OR DISTRIBUTED WITHOUT THE PRIOR WRITTEN CONSENT OF TELULAR CORP. VERNON HILLS, IL</p>		<p>TITLE: SX5T ASSEMBLY, CDMA-1X, DUAL, V/F/D</p>	<p>DES ENG: S. FIERRO 3/22/04</p>
		<p>SCALE: NONE</p>	<p>MFG ENGR: KRASOWSKI 3/22/04</p>
		<p>DWG. NO. 01033200</p>	<p>APPD BY: P. WOJCIK 3/22/04</p>
		<p>SHT. 1 OF 1</p>	<p>DWG. SIZE: D</p>

P/N 01033201 (SEE SEPARATE PARTS LIST) - 15032701 + 87F18100 (SHOWN)