

PHONECELL[®] SX5e GSM FIXED WIRELESS TERMINAL

**900 MHz GSM
1800 MHz GSM
1800 MHz GSM**

**VOICE COMMUNICATION
COMPUTER FAX/DATA
STANDARD FAX (OPTIONAL)**

USER'S MANUAL

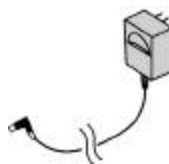
CONTENTS



Phonecell® SX5e CDMA FWT



Spike Antenna



Power Supply

Before installing your **Phonecell® SX5e**, carefully remove the contents from the shipping carton and check for evidence of shipping damage. **If damage is found, contact your Authorized Telular Distributor or shipping agent immediately.**

SAFE OPERATION INSTRUCTIONS

IMPORTANT! Before installing or operating this product, read the **SAFETY AND GENERAL INFORMATION** section of this guide.

- Install the unit indoors.
- Install the unit on a hard, flat surface for proper ventilation.
- Do not expose the unit to rain or moisture.
- Do not place the unit on or close to sources of heat.

PLEASE SEE THE IMPORTANT NOTICES SECTION OF THIS GUIDE FOR IMPORTANT INFORMATION ON USE, WARRANTY AND INDEMNIFICATION

IMPORTANT NOTICES

TERMS AND CONDITIONS FOR USE OF PHONECELL® PRODUCTS ("Product")

These Terms and Conditions are a legal contract between you and Telular Corporation for the title to and use of the Product. BY RETAINING AND USING THE PRODUCT AFTER RECEIPT OF IT, YOU AGREE TO THE TERMS AND CONDITIONS INCLUDING WARRANTY DISCLAIMERS, LIMITATIONS OF LIABILITY AND INDEMNIFICATION PROVISIONS BELOW. IF YOU DO NOT AGREE TO THE TERMS AND CONDITIONS, DO NOT USE THE PRODUCT AND IMMEDIATELY RETURN THE UNUSED PRODUCT FOR A COMPLETE REFUND. You agree to accept sole responsibility for any misuse of the Product by you; and, in addition, any negligent or illegal act or omission of you or your agents, contractors, servants, employees, or other users of the Product so long as the Product was obtained from you, in the use and operation of the Product. Changes or modifications not expressly approved by Telular Corporation will void your authority to operate the equipment per FCC part 15 paragraph 15.21.

INDEMNIFICATION OF TELULAR CORPORATION ("TELULAR")

YOU SHALL INDEMNIFY, DEFEND AND HOLD HARMLESS TELULAR FOR ANY OF THE COST, INCLUDING REASONABLE ATTORNEYS' FEES, AND FROM CLAIMS ARISING OUT OF YOU, YOUR CLIENTS' OR OTHER THIRD PARTIES' USE OR OPERATION OF THE PRODUCT: (i) FOR MISUSE OR IN A MANNER NOT CONTEMPLATED BY YOU AND TELULAR OR INCONSISTENT WITH THE PROVISIONS OF THIS MANUAL; (ii) IN AN ILLEGAL MANNER OR AGAINST PUBLIC POLICY; (iii) IN A MANNER SPECIFICALLY UNAUTHORIZED IN THIS MANUAL; (iv) IN A MANNER HARMFUL OR DANGEROUS TO THIRD PARTIES; (v) FROM CLAIMS BY ANYONE RESPECTING PROBLEMS, ERRORS OR MISTAKES OF THE PRODUCT; OR (vi) COMBINATION OF THE PRODUCT WITH MATERIAL, MODIFICATION OF THE PRODUCT OR USE OF THE PRODUCT IN AN ENVIRONMENT NOT PROVIDED, OR PERMITTED, BY TELULAR IN WRITING. THE PARTIES SHALL GIVE EACH OTHER PROMPT NOTICE OF ANY SUCH COST OR CLAIMS AND COOPERATE, EACH WITH THE OTHER, TO EFFECTUATE THIS INDEMNIFICATION, DEFENSE AND HOLD HARMLESS.

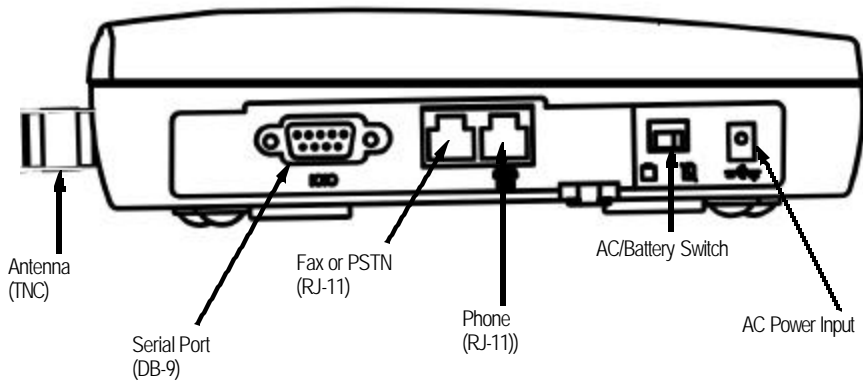
Telular Corporation
Corporate Headquarters
647 North Lakeview Parkway
Vernon Hills, Illinois 60061, USA

Technical Support
Tel: 847-247-9400 · Fax: 847-247-0021
E-mail: main.office@telular.com · <http://www.telular.com>

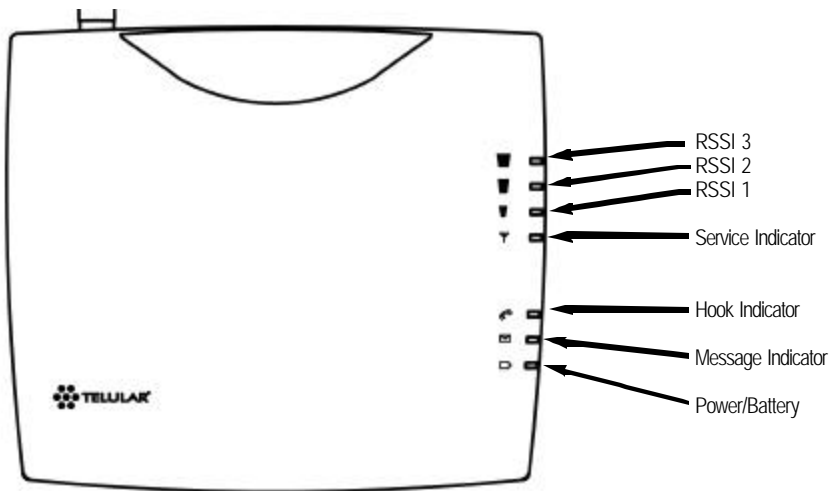
TABLE OF CONTENTS

Contents	2
Safe Operation Instructions	2
Important Notices	2
Installation	
Location and Setup	
Optional Wall-Mount Instructions	
Connect Your Phonecell® SX5 to AC Power	
Emergency Battery Backup	
Plug in Your Telephone	
Phonecell® SX5 Operation	
How to Use the LED Status Indicators	
How to Place a Call	
How to Receive a Call	
How to End a Call	
The Hookflash Function	
Important Tones and Alerts	
Supplementary Features (Network Dependent)	
Call Waiting	
Three-Way Calling	
Call Forwarding	
Caller ID	
Voice Mail Service	
Digital Data Service	
PC Data Connection	
Sending Digital Fax	
Receiving Digital Fax	
Data Communication (E-Mail)	
Browsing the Internet	
Analog (Group 3) Fax Service (Optional)	
Plug In A Fax Machine	
Sending A Fax	
Receiving A Fax	
Phonecell® SX5 Programming	
Programming Mode Overview	
How to Adjust Voice Volume	
How to Change the Lock Code	
How to Restrict Outgoing Calls	
How to Set the Alarm	
How to Disable the Alarm	
How to Set Caller ID Mode	
How to Set 1 Minute Alert Beep	
How to Set the Connecting Tone	
How to Reset the Terminal	
Phonecell® SX5 Technician Programming	
Phonecell® SX5 Troubleshooting	
General Information and Safety	
Warranty	
Appendix A: How to Setup PC Serial Ports for Phonecell® SX5	
Computer Digital Fax/Data	

EXTERNAL CONNECTERS



LED STATUS INDICATORS



INSTALLATION

Location and Setup

The Phonecell® SX5 comes with a standard spike antenna (TNC). For optimal signal strength, choose a location that is above ground and as close to windows (or exterior walls) as possible - **See Figure 2**. Cellular signal strength is displayed by the Received Signal Strength Indicator (RSSI) LED on the unit - See the *How to Use the LED Status Indicators* section of this guide.

- 1) Connect the antenna to the side of the terminal - **see Figure 1**.
- 2) Finger-tighten the antenna; do not over-tighten.

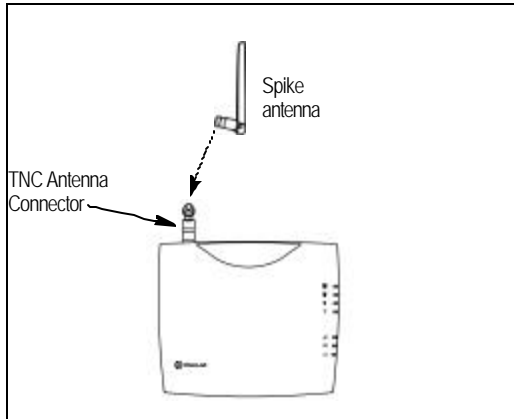


Figure 1 – SX5e antenna connection.

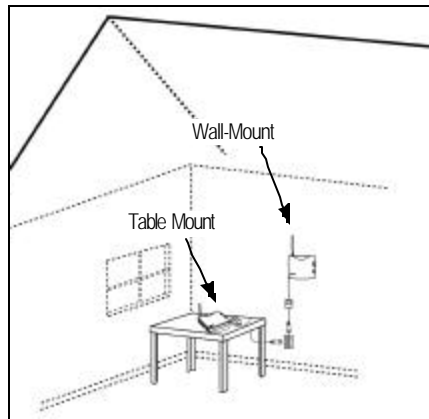


Figure 2 – For optimal call clarity, the antenna should be pointed up and the SX5e located close to an exterior wall or window.

To Wall-Mount the SX5e

- 1) Mark two hole locations 98.5mm (3-7/8 inches) vertically apart and drill two holes into the wall.
- 2) Install the screws (not supplied) into the wall, leaving a gap (approximately 3 mm (1/8 inch)) between screw head and wall.
- 3) Align the mounting holes with the screws and mount the Phonecell® SX5 onto the screws - **See Figures 3 and 4**.

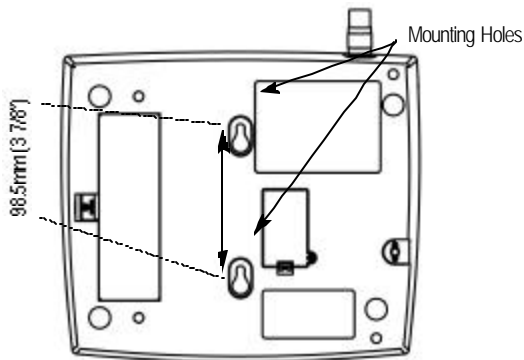


Figure 3 – SX5e mounting holes.

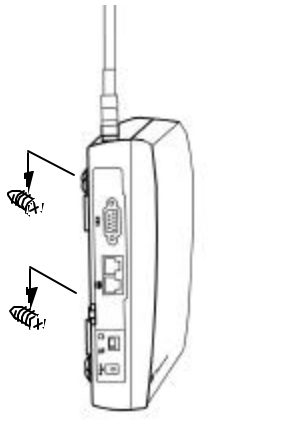


Figure 4 – Mount the SX5e on screws.

To Connect Your Phonecell® SX5e to AC Power

- 1) Connect the barrel connector of the power supply to the AC power input receptacle of the Phonecell® SX5 - **See Figure 5**
- 2) Plug the power supply into the AC socket.
- 3) Press and hold the power button until the power LED is green - **See Figure 5 and Figure 8.**
- 4) Check the cellular signal strength and move the unit until you achieve the best signal possible - see the *Received Signal Strength* section of this guide.

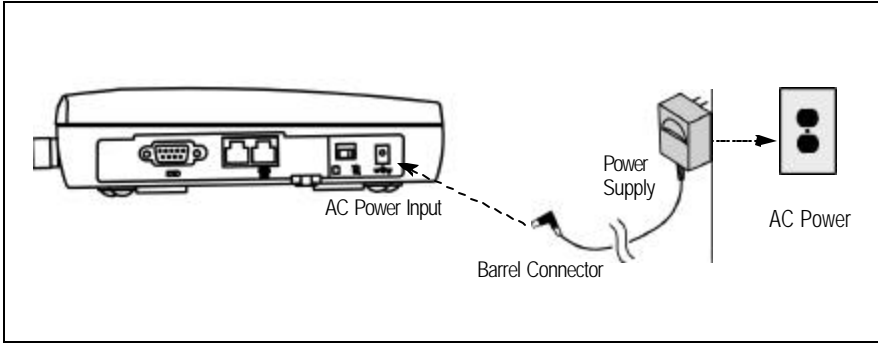


Figure 5 – SX5e AC power input.

Emergency Battery Backup

To Install the Battery

- 1) Open the battery cover on the bottom side of the SX5e - **See Figure 6**
- 2) Connect the battery cable to the battery connector inside the battery compartment.
- 3) Insert the battery pack into the battery compartment between the hold bars.
- 4) Close the battery cover.

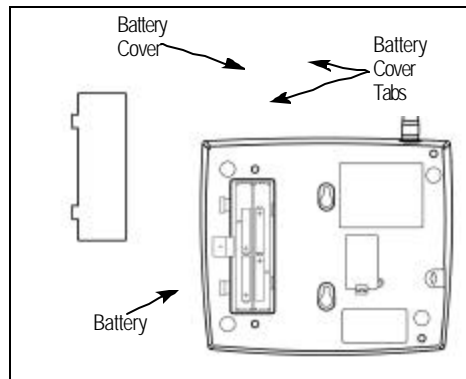


Figure 6 – SX5e battery installation.

To Attach a Telephone

- 1) Locate the modular line port on your telephone and plug in one end of a standard phone cord - **See Figure 7.**
- 2) Connect the other end of the phone cord to the telephone port on the side of the SX5e - **See Figure 7.**

NOTE: The SX5e does not support direct computer modem (data) operation through the phone port or fax port. See the *Digital Data Service* section of this guide for computer digital data operation.

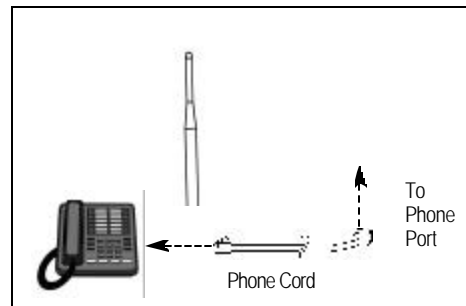


Figure 7 - Connect SX5e to telephone.

PHONECELL SX5E OPERATION

To Use the LED Status Indicators

- 1) Power-on the unit (see the *Connect Your Phonecell® to AC Power* section of this manual).
- 2) The LED indicators on the front of the SX5e will turn ON. The following tables describe the modes and operation of the indicators.

Received Signal Strength Indicator LED's

LED	Activity	Cellular Signal Strength
1	Flashing	Lowest
	Continuous	Poor
2	Flashing	Ok
	Continuous	Good
3	Flashing	Very Good
	Continuous	Best

Service Indicator LED

LED Color	LED Activity	Description
Green	Continuous	Full Service
Amber	Continuous	Limited Service
Red	Continuous	No Service
	Flashing	SIM Error

Hook Indicator LED

LED Color	LED Activity	Description
Green	Flashing (with ringer)	Incoming call
	Continuous	FWT is off hook
	Fast Flashing	Processing data call
	Slow Flashing	Call on hold

Message Indicator LED

LED Color	LED Activity	Description
Green	Continuous	New voicemail message
	Slow Flashing	New text message

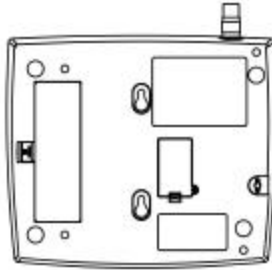
Power/Battery

LED Color	LED Activity	Description
Green	Continuous	Power supply applied
Amber	Continuous	Battery power active (battery switch on)
Red	Continuous	Battery low (battery switch on)
	Slow Flashing	Batter low (power supply applied)

To Install the SIM Card

The GSM module within the Phonecell® SX5 requires a Subscriber Identification Module (SIM) for normal operation. The service provider supplies a SIM card, which carries the account information needed to operate the Phonecell® SX5. The mini-SIM compartment is on the back of the Phonecell® SX5 - see Figure 11.

- 1) Disconnect DC power.
- 2) Remove the SIM compartment cover by removing the screw.
- 3) Open the SIM card holder.
- 4) Line up the mini-SIM card with the arrow on the SIM card holder.
- 5) Gently insert the mini-SIM card in the slot of the SIM card holder - See Figure 12.
- 6) Close the SIM card holder.



NOTE: If you insert the SIM card improperly, the holder will not close. Do not force it shut. Make sure the SIM card is aligned properly with the directional arrow on the holder.

- 7) Reattach the SIM compartment cover with the screw.
- 8) Reconnect DC power.



The mini-SIM may require entry of a Personal Identification Number (PIN). The PIN is a four- to eight-digit number provided with the SIM card. If the service provider has set the SIM to require PIN entry, the Phonecell® SX5 will request the PIN each time it is powered ON or the SIM is removed and replaced. The PIN can be stored within the Phonecell® SX5 for automatic entry when required. To use the automatic PIN entry feature, the PIN must be correctly programmed and automatic PIN entry must be enabled.

If PIN entry is requested while automatic PIN entry is disabled, the Phonecell® SX5 emits a SIM Inactive tone. The SIM PIN can be manually entered at that time by dialing the PIN and pressing #. If entry is successful, the SIM Inactive tone will be replaced by service dial tone.

To Enable/Disable the Automatic PIN Entry Feature

- 1) Using a POTS (Plain Old Telephone Set) phone connected to the telephone port, lift up the handset (take off-hook).

NOTE: You must have tone-dial (DTMF) capability to enable/disable the Automatic PIN Entry Feature.

- 2) Enter the Programming mode:
Press: # * 0 * 1 2 3 4 5 6 7 8 #

The dial tone will cease upon entry of the first digit. If you enter the access code correctly, the dial tone should change to a different, steady Programming tone and the bottom LED indicator on the front of the Phonecell® SX5 will blink alternately RED and GREEN to indicate that you're in the programming mode.

- 3). Once in Programming mode:
Press: # * 65 * < auto_PIN> * <PIN> #
 - To disable automatic PIN entry, set the "auto PIN" value to 0.
 - To enable automatic PIN entry, set the "auto PIN" value to 1.

You must enter either 0 or 1, otherwise, the FWT will not update or store this value and the existing stored parameter will remain. The factory default value is 0 (disabled). The factory default PIN setting within the FWT's non-volatile memory is "1234."

- 4) Correct entry will be confirmed by the return of the programming tone, which signifies that the unit is ready to accept the next entry. Incorrect entry will result in a short, three tone sequence of rising frequencies, followed by the return of the programming tone, which again signifies that the unit is ready to accept the corrected entry.

5) Hang up the telephone handset (place on-hook).

For Example: To enable automatic PIN entry for PIN "1234," dial: # * 65 * 1 * 1234 #

To Change the PIN Value Entered by the Automatic PIN Entry Feature

Automatic PIN entry must be disabled when you program the new PIN and Auto PIN Entry.

1) Using a tone-dial (DTMF) POTS telephone connected to the Phone port, lift up the handset (take off-hook).

2) Enter the Programming mode:

Press: # * 0 * 1 2 3 4 5 6 7 8 #

The dial tone will cease upon entry of the first digit. If you enter the access code correctly, the dial tone should change to a different, steady "Programming" tone and the bottom LED indicator on the front of the Phonecell® SX5 will blink alternately RED and GREEN to indicate that you're in the programming mode.

3) Press: # * 64 * <old_PIN> * <new PIN> * <new PIN> #

The new SIM PIN will be supplied by the service provider with a new SIM.

If the SIM card is changed, the PIN must be reprogrammed using the above command with the correct new PIN for the new SIM.

NOTE: The factory default PIN setting within the FWT's non-volatile memory is "1234."

4) Correct entry will be confirmed by the return of the programming tone, which signifies that the unit is ready to accept the next entry. Incorrect entry will result in a short, three tone sequence of rising frequencies, followed by the return of the programming tone, which again signifies that the unit is ready to accept the corrected entry.

5) Hang up the telephone handset (place on-hook).

For Example: To set up a new SIM with PIN "5678," dial: # * 64 * 1 2 3 4 * 5 6 7 8 * 5 6 7 8 #

NOTE: This procedure will not change the PIN encoded on the SIM. It will only change the PIN stored in the FWT for automatic entry of the PIN when requested by the GSM module.

If the SIM card in use has SIM PIN Entry enabled, it is strongly recommended that Automatic PIN Entry be selected.

To Set a New PIN in the SIM

REMINDER: Automatic PIN entry must be disabled - before and while the SIM PIN is changed - until programming of the new PIN and Auto PIN Entry (see previous page) is completed.

1) Using a tone-dial (DTMF) POTS telephone connected to the Phone port, lift up the handset (take off-hook).

2) Press: * * 04 * <old_PIN> * <new_PIN> * <new_PIN> #

NOTE: You must know the old PIN to change it and the new PIN must be 4 to 8 digits (0 - 9) in length.

3) Incorrect entry of the old PIN will be indicated by a short, three tone sequence of rising frequencies. Hang up the telephone handset and start over at step 1 with the correct old PIN.

Incorrect length (less than 4 or more than 8 digits) of the new PIN or not entering the same value in both new PIN entries will result in silence. Hang up the telephone handset and start over at step 1.

Correct entry will be confirmed by a short beep. Hang up the telephone handset.

For Example: To set up a new SIM with PIN "5678," where the old PIN is "1234," dial: * * 04 * 1 2 3 4 * 5 6 7 8 * 5 6 7 8 #

NOTE: In case of PIN2, substitute the following step 2:

2) Press: * * 042 * <old_PIN2> * <new_PIN2> * <new_PIN2> #

NOTE: You must know the old PIN2 to change it and the new PIN2 must be 4 to 8 digits (0 - 9) in length.

For Example: To set up a new SIM with PIN2 "5678," where the old PIN2 is "1234," dial: * * 042 * 1 2 3 4 * 5 6 7 8 * 5 6 7 8 #

NOTE: This procedure will change the PIN encoded on the SIM. It will not change the PIN stored in the FWT for automatic entry of the PIN when requested by the GSM module. (See previous page for instructions on how to enter the auto-entry PIN value).

To Unblock a SIM PIN

Use the following key sequence to unblock a SIM card:

- 1) Press: * * 05 * <PIN_unblocking key> * <new_PIN * <new PIN> #
- 2) Press: * * 052 * <PIN2_unblocking key> * <new_PIN2 * <new PIN2> #

NOTE: This procedure will change the PIN encoded on the SIM. It will not change the PIN stored in the FWT for automatic entry of the PIN when requested by the GSM module. (See previous page for instructions on how to enter the auto-entry PIN value).

To Place a Call

- 1) Pick up your telephone handset (your phone is now “off-hook”).
- 2) Listen for dial tone (If service is not available, a No-Service tone is produced. Hang-up the phone and try again. If the No-Service tone continues, contact your service provider to make sure cellular service is activated.).
- 3) Dial the phone number.

To Receive a Call

When your telephone rings, pick up the handset and begin talking.

How to End a Call

Hang-up the phone (place the handset back onto the telephone cradle).

The Hookflash Function

When you initiate the Hookflash function, it automatically lets you:

Speed up the connection after you dial a phone number.

Answer an incoming call that occurs when you’re dialing a phone number.

Use special (supplementary) cellular services which may be available in your cellular service area (see the Using Standard Supplementary Services section of this manual).

To Use the Hookflash Function

Depending upon your phone, there are two ways to initiate the Hookflash function:

Press the dedicated “HOOKFLASH” or “FLASH” key on your telephone.

Press the hang-up or switch-hook mechanism on your phone once quickly (approximately 1/2-second).

Important Tones and Alerts

No-Service Tone – When cellular service is not available, the receiver emits a No-Service (fast-beeping) tone instead of the normal (steady) dial tone.

ROH (Receiver Off-Hook) Tone – If the telephone equipment remains off-hook (off its cradle) with no dialing activity for 45 seconds, the receiver emits an ROH tone for 60 seconds.

Incoming Call Alert – If you’re dialing a number and an incoming call occurs, the receiver will emit an audible ring. To answer the incoming call:

Press the “HOOKFLASH” button once. This will connect the incoming call.

OR hang-up immediately. This will cause the phone to start ringing.

Supplementary Service Dial Tone – When supplementary services are enabled and active, the receiver may emit a special dial tone to indicate that one or more services are active.

Roam Dial Tone – When cellular service is available, but the Phonecell® SX5 is in a Roam area, the receiver may emit a different dial tone to indicate the roaming condition. However, unless the FWT is re-programmed in the field, the factory default tone is set the same as normal service dial tone.

Non-Registered Service Tone – When the SIM Card is inactive, missing from the Phonecell® SX5, or installed but requires PIN entry, the receiver emits a non-registered service tone instead of the normal (steady) dial tone.

How to Use Call-Dependent Supplementary Services

Call-dependent supplementary services are those services handled within an active call. These features are network-dependent. Check with your cellular provider to determine available features.

Use the following commands to activate the call-dependent supplementary services:

NOTE: <send> is provided by the hookflash function (See the Hookflash Function section of this manual).

To Release All Held Calls or Set User Determined User Busy For a Waiting Call:

Press: 0 <send>.

To Release All Active Calls and Accept the Held/Waiting Call:

Press: 1 <send>.

To Release a Specific Active Call x:

Press: 1 x <send> (x represents the call ID 1-7).

To Place All Active Calls on Hold and Accept the Held/Waiting Call:

Press: 2 <send>.

To Place All Active Calls on Hold Except Call x:

Press: 2 x <send> (x represents the call ID 1-7).

To Add a Held Call to the Conversation:

Press: 3 <send>.

To Place All Active Calls on Hold and Make the Call to the Specified Phone Number:

Press: PhoneNo <send>.

NOTE: When both a held and a waiting call exist in a conflicting situation, the above procedures apply to the waiting call.

Call Waiting:

Permits a subscriber to be notified of an incoming call while the subscriber is engaged in an active or held call. The subscriber can either accept, reject, or ignore the incoming call.

Activate: * 43 #

Deactivate: # 43 #

Interrogate: * # 43 #

Call Hold:

Allows a served subscriber, who is provisioned with this supplementary service, to interrupt communication on an existing active call and then subsequently, if desired, re-establish communication. The traffic channel remains assigned to the subscriber after the communication is interrupted to allow origination or possible termination of other calls.

To Adjust the Volume Level

If the volume level on your phone is too high or too low, you can adjust the levels using the keypad on your telephone. Note: your telephone must be in Tone-Dial (DTMF) mode to adjust the levels.

To Increase Audio Level - Increase the audio level in steps by pressing:

* 8 (also known as # * Up)

Continue to press # * 8 until the desired level is reached.

To Decrease Audio Level - Decrease the audio level in steps by pressing:

* 3 (also known as # * Down)

Continue to press # * 3 until the desired level is reached.

NOTE: The default setting lets you adjust the audio up to three (3) steps from the default volume in either direction (Up or Down). The volume setting remains in effect for future calls until changed manually, even if the telephone is on-hooked. If the Phonecell® SX5 power is cycled (turned OFF/ON), the default mid-range volume setting will be restored.

Variable Dial Time (Auto SEND Delay) Option

When you place a call, your Phonecell® SX5 automatically sends the phone number over the cellular network after you dial the last digit – just like a landline phone. However, to make sure you have enough time to dial the last digit, a 3-second Auto SEND Delay is programmed into the unit at the factory. To change the Auto SEND Delay setting, see the How To Set the Auto SEND Delay section of this manual.

Data After SEND (In-Call DTMF Signaling) Option

Depending upon your cellular provider, the Data After SEND option may need to be Enabled or Disabled to use special cellular features such as call waiting, three-way conference calls, voice mail, etc. Please consult your service provider for the required Data After Send/In-Call DTMF Signaling configuration.

The factory default setting is 0 (In-Band Signaling only). To change the Data After SEND setting, see the How To Set Data After SEND (In-Call DTMF Signaling) section of this manual.

Zero Dial Delay for Frequently Called Numbers

A new patented feature enables the Phonecell® SX5 to recognize your frequently called phone numbers and send them immediately—without the 3-second Auto SEND Delay. The Phonecell® SX5 stores a list of up to 50 numbers in its memory. This list contains any number that you've called at least twice successfully.

NOTE: Cycling (turning OFF/ON) the power will erase the current list. A new list will be started when power is re-applied. To enable or disable this feature, see the Enable/Disable Zero Dial Delay for Frequently Called Numbers section of this manual.

Caller ID Format

The Phonecell® SX5 will support Caller ID device operation. The FWT factory default format is designed to work for most Caller ID devices. If the Caller ID device does not respond, then change the FWT Caller ID format using the programming command below. The Phonecell® SX5 can be programmed with an ordinary touch-tone telephone.

NOTE: The User Programming mode is not accessible during a call. Refer to the Phonecell® SX5 Programming section of this manual to enter the Programming Mode.

To Enter Caller ID Format

The following key sequence is used to select the Caller ID format:

Press # * 84 * <CID format> #

The Caller ID Format factory default value will work for most Caller ID devices. If the Caller ID device does not respond, program a value of 1 in the "CID Format" field. If the Caller ID device still does not respond, then program a value of 2. If the value is not in the range 0 to 2, it is considered invalid and the FWT will not update or store this value; the currently stored value will remain. The factory default value is 0.

When the FWT is programmed to Format 0, date and time information is not provided by the FWT. When the FWT is programmed to Format 1 or Format 2, the FWT provides "January 1, Midnight" as generic time and date information. The actual display of this generic date and time ("January 1, Midnight") will vary as it is determined by the Caller ID device.

For Caller ID Devices with Date and Time Display

When the Caller ID device is first powered, the date and time information will begin from "January 1, Midnight." The user cannot change the date and time through the FWT.

When the Caller ID format is set to factory default 0, date and time will continue to advance. Each incoming call will not affect the date and time.

When the Caller ID format is set to either 1 or 2, the date and time will be reset to "January 1, Midnight" for each incoming call.

Using Standard Supplementary Services

Your Phonicell® SX5 is compatible with a variety of special services, including:

Call Forwarding
Call Barring
Call Waiting
Three-Way Calling
Caller ID
Voice Mail
and more...

Depending upon your cellular provider, these services may be available on a subscription basis. However, certain dialing sequences must be entered. Please consult your service provider for the dialing instructions for your system.

Standard supplementary services are defined as those supplementary services handled while not in a call. Depending on the supplementary service, several commands may be available. The command list is defined below:

Registration - The programming by the user of information to enable subsequent operation of a service. This action involves input of specific supplementary information. For example, when call-forwarding registration is initiated by the user, a forwarding number must be supplied.

Erasure - The deletion of information stored against a particular service by a previous registration.

Activation - An action taken by the FWT user to enable a previously registered process to run.

Deactivation - An action taken by the FWT user to terminate the process started at activation.

Depending on the supplementary service, additional parameters may be required to successfully complete an operation, such as phone number or password. Some supplementary services have optional parameters, such as Teleservice and/or Delay settings. Delay is the amount of time to wait before completing performance of a service that has a condition controlling its activity; for example, call forward on no answer waits an amount of time equal to the "delay" for the phone to be answered before declaring no answer and forwarding the call.

Teleservice: 10 = All Teleservices, 11 = Speech, 12 = Data, 13 = Fax, 16 = SMS, 19 = All Teleservices except SMS.

Delay: 5-30 seconds

PhoneNo: Up to 20 digits (0-9)

NOTE: <send> is provided by the hookflash function (See the Hookflash Function section of this manual).

Call Forwarding Unconditional:

Allows a called subscriber to have the network send immediately all incoming calls, or just those associated with a specific teleservice, addressed to the called subscriber's directory number to another directory number.

Register:* * 21 * Ph No * Teleservice # <Send> or * 21 * Ph No * Teleservice # <Send>

Erase:# # 21 * Teleservice # <Send>

Activate:* 21 * Teleservice # <Send>

Deactivate:# 21 * Teleservice # <Send>

Call Forwarding on Mobile Subscriber Busy:

Allows a called subscriber to have the network send immediately all incoming calls, or just those associated with a specific basic service group, addressed to the called subscriber's directory number and which meet "subscriber busy" to another directory number.

Register:* * 67 * Ph No * Teleservice # <Send> or * 67 * Ph No * Teleservice # <Send>

Erase:# # 67 * Teleservice # <Send>

Activate:* 67 * Teleservice # <Send>

Deactivate:# 67 * Teleservice # <Send>

Call Forwarding on No Reply:

Allows a called subscriber to have the network send all incoming calls, or just those associated with a specific basic service group, addressed to the called subscriber's directory number and which meet "no reply" for a specific amount of time to another directory number.

Register:* * 61 * Ph No * Teleservice * Delay # <Send>

Erase:## 61 * Teleservice # <Send>

Activate:* 61 * Teleservice # <Send>

Deactivate:# 61 * Teleservice # <Send>

Call Forwarding on Mobile Subscriber Not Reachable:

Allows a called subscriber to have the network send all incoming calls, or just those associated with a specific Teleservice group, addressed to the called mobile subscriber's directory number, but which is determined to be "not reachable", to another directory number.

Register:* * 62 * Ph No * Teleservice # <Send>

Erase:## 62 * Teleservice # <Send>

Activate:* 62 * Teleservice # <Send>

Deactivate:# 62 * Teleservice # <Send>

Call Forwarding All Call Forwarding:

Allows a called subscriber to have the network send-after the stated delay-all incoming calls, or just those associated with a specific teleservice, addressed to the called subscriber's directory number to another directory number.

Register:* * 002 * Ph No * Teleservice * Delay # <Send>

Erase:## 002 * Teleservice # <Send>

Activate:* 002 * Teleservice # <Send>

Deactivate:# 002 * Teleservice # <Send>

Call Forwarding Conditional Call Forwarding:

Register:* * 004 * Ph No * Teleservice * Delay # <Send>

Erase: ## 004 * Teleservice # <Send>

Activate:* 004 * Teleservice # <Send>

Deactivate:# 004 * Teleservice # <Send>

Calling Line Identification Restriction:

If subscribed to in temporary mode, enable the calling party to countermand the subscribed-to presentation of its line identity to the called party for a specific call (i.e., the next call) only. (If subscribed to in permanent mode, the network will prevent presentation of the calling party's line identity to the calling party for every outgoing call.)

If subscribed to in temporary mode with default value "presentation restricted," the user may suppress CLIR, for the specific call only:

Register:* 31 # Call Phone Number <Send>

If subscribed to in temporary mode with default value "presentation not restricted," the user may invoke CLIR, for the specific call only:

Register: # 31 # Call Phone Number <Send>

Barring of All Outgoing Calls:

Allows a subscriber to have barring of certain categories of outgoing calls according to a barring program which is selected from a set of one or more barring programs chosen at provision time and is valid for all outgoing calls, or just those associated with a specific Teleservice.

Activate: * 33 * Password * TeleService # <Send>

Deactivate: # 33 * Password * TeleService # <Send>

Barring of Outgoing International Calls:

Outgoing call setup possibilities exist only to subscribers of the PLMN(s) and the fixed network(s) of the country where the mobile subscriber is presently located.

Activate:* 331 * Password * TeleService # <Send>

Deactivate:# 331 * Password * TeleService # <Send>

Barring of Outgoing International Calls Except Those Directed to the Home PLMN Country:

Outgoing call setup possibilities exist only to subscribers of the PLMN(s) and the fixed network(s) of the country where the subscriber is presently located or to subscribers of the home PLMN country of the served subscriber and to subscribers of the fixed network(s) in the home PLMN country.

Activate:* 332 * Password * TeleService # <Send>

Deactivate:# 332 * Password * TeleService # <Send>

Barring of All Incoming Calls:

Allows a subscriber to have barring of certain categories of incoming calls according to a barring program which is selected from a set of one or more barring programs chosen at provision time and is valid for all incoming calls, or just those associated with a specific basic service group.

Activate:* 35 * Password * TeleService # <Send>

Deactivate:# 35 * Password * TeleService # <Send>

Barring of Incoming Calls when Roaming Outside the Home PLMN Country:

Calls which are terminated for the served subscriber is barred if the subscriber is roaming outside the home PLMN country.

Activate:* 351 * Password * TeleService # <Send>

Deactivate:# 351 * Password * TeleService # <Send>

All Call Barring:

On activation all calls is barred; on deactivation all call barring is disabled.

Activate:* 330 * Password * TeleService # <Send>

Deactivate:# 330 * Password * TeleService # <Send>

All Outgoing Call Barring:

On activation all outgoing calls is barred; on deactivation all outgoing call barring is disabled.

Activate:* 333 * Password * TeleService # <Send>

Deactivate:# 333 * Password * TeleService # <Send>

All Incoming Call Barring:

On activation all incoming calls is barred; on deactivation all incoming call barring is disabled.

Activate:* 353 * Password * TeleService # <Send>

Deactivate:# 353 * Password * TeleService # <Send>

Enter Caller ID Format Selection:

The following key sequence is used to enter the Caller ID format selection.

* 84 * <CID format>

The CID format value is set to 0 to select a CID Multiple Data Message Format (MDMF) with no date of time information; set to 1 to select a CID MDMF with date and time information fixed at midnight, January 1; set 2 to select a CID Single Data Message Format (SDMF) with the date and time information at midnight, January 1. If the CID format is greater than 2, it is considered invalid. The factory default is 0.

Unstructured Supplementary Services:

Allows a user and a PLMN operator-defined application to communicate in a way which is transparent to the terminal and to intermediate network entities.

"any characters, from GSM 3.08 default alphabet" # <Send> or "1 or 2 characters, from GSM 3.08 default alphabet" <Send>

PHONECELLSX5 USER-PROGRAMMING COMMANDS

The Phonecell® SX5 can be programmed on location with an ordinary telephone, which is sometimes referred to as a POTS (Plain Old Telephone Set) phone. NOTE: the User Programming mode is not accessible while you're in a call.

In the following sections, an <entered value> comprises the digits 0 through 9. The digits '*' and '#' are considered invalid when used inside an <entered value>, and will cause that command/value to be rejected.

When you enter the programming mode, a timer is started. If there are no key entries within any 2-minute period, the FWT will revert to its normal mode. Going on-hook (hanging up the phone) will exit the programming mode.

Correct entry of the commands below will be confirmed by the return of the programming tone, which signifies that the unit is ready to accept the next entry. Incorrect entry will result in a short, three tone sequence of rising frequencies, followed by the return of the programming tone, which again signifies that the unit is ready to accept the corrected entry.

To Enter the User Programming Mode

Press: # * 0 * 1 2 3 4 5 6 7 8 #

The access code is 8 digits. If the access code is not 8 digits or does not match the access code, the Programming mode cannot be entered. This code is pre-programmed during production and cannot be changed in the field.

If you enter the access code correctly, the dial tone should change to a different, steady "Programming" tone and the bottom LED indicator on the front of the Phonecell® SX5 will blink alternately RED and GREEN to indicate that you're in the programming mode.

To Set Data After SEND (In-Call DTMF Signaling)

Press: # * 10 * <in-call DTMF signaling> #

The < > brackets represents the 1-digit in-call DTMF signaling option:

enter 0 for In-Band Signaling;

enter 1 for Out-of-Band Signaling;

enter 2 for both In-Band and Out-of-Band signaling;

enter 3 for neither.

The in-call DTMF signaling value is set to 0 for in-band signaling; 1 for out-of-band signaling, 2 for both in-band and out-of-band, and 3 for neither. If the in-call DTMF signaling value is greater than 3, it is considered invalid. The factory default is 1 (In-band signaling).

To Set the Auto SEND Delay

Press: # * 11 * <delay> #

The < > brackets represent the Auto SEND Delay. You must enter a value between 2 and 20 seconds, otherwise the FWT will not update or store this value; the existing stored parameter will remain. (For instance, to enter a 5-second delay, press: # * 11 * 5.) The factory default setting is 3 seconds.

To Set the Pulse Dial Option

Press: # * 12 * <pulse-dial> #

The < > brackets represent the 1-digit Pulse Dial option:

enter: 0 to disable pulse dialing capability

enter: 1 to enable pulse dialing capability.

You must enter either 0 or 1, otherwise the FWT will not update or store this value; the existing stored parameter will remain. The factory default setting is 1.

To Enable/Disable Zero Dial Delay for Frequently Called Numbers

Press: # * 21 * <zero-delay dial> #

The < > brackets represent the 1-digit Zero Dial Delay option:

enter: 0 to disable Zero Dial Delay option

enter: 1 to enable Zero Dial Delay option

You must enter either 0 or 1, otherwise the FWT will not update or store this value; the existing stored parameter will remain. The factory default setting is 1.

To Program the Output Level Option

Press: # * 69 * <output level> #

The output level value is set to 0 for low (-20dBm), 1 for normal (-14dBm) and 2 for high (-8dBm). If the output level value is greater than 2, it will be considered invalid. The factory default is 1.

PHONECELL SX5E TECHNICIAN-PROGRAMMING COMMANDS

The following commands are to be used by trained field technicians to set up the Phonecell® SX5 for operation in the network. Since these commands can directly affect the proper operation of the unit, there is an additional level of security to prevent casual access.

To Enter Technician-Programming Mode

Press: # * 0 * 1 2 3 4 4 3 2 1 #

The access code is 8 digits. If the access code is not 8 digits or does not match the access code, the Programming mode cannot be entered. This code is pre-programmed during production and cannot be changed in the field.

If you enter the access code correctly, the dial tone should change to a different, steady "Programming" tone and the bottom LED indicator on the front of the Phonecell® SX5 will blink alternately RED and GREEN to indicate that you are in the Programming mode.

To Enter Dial Tone After Remote On-Hook Option

Press: # * 8 * <dial tone option> #

The dial tone value is set to 0 for no tone after a remote on-hook; 1 to enable dial tone after remote on hook. If the value is neither 0 nor 1, it is considered invalid. The factory default is 0.

To Enter Post Receiver Off-Hook Option

Press: # * 9 * <post ROH option> #

The post ROH value is set to 0 for continuous ROH tone; 1 to disable ROH tone and periodically check for an on-hook condition. If the post ROH value is neither 0 nor 1, it is considered invalid. The factory default is 1.

To Enter Call-Answered Supervision Pulse Option

Press: # * 18 *

<cas_pls_enable> *
<cas_pls_freq> *
<cas_pls_duration> *
<cas_pls_level> #

Use the values specified below to program this option. Any values outside of those specified will be invalid.

cas_pls_enable

0 = disable the pulse (default)
1 = enable the pulse.

cas_pls_frequency

0 = 12 kHz (default)
1 = 16 kHz

cas_pls_duration

values from 10 to 65535 (in 1 ms increments). Default is 100

cas_pls_level

0 = 0±3 dBm
1 = 3±3 dBm
2 = 6±3 dBm
3 = 9±3 dBm (default)
4 = 12±3 dBm
5 = 15±3 dBm
6 = 18±3 dBm

To Enter Line-Reversal Outgoing Option

Press: # * 22 * <line_reversal_outgoing> #

The line-reversal outgoing value is set to 0 to disable line reversal, 1 to enable line reversal. If the value is neither 0 nor 1, it is considered invalid. The factory default is 0.

To Enter Line-Reversal Incoming Option

Press: # * 23 * <line_reversal_incoming> #

The line-reversal outgoing value is set to 0 to disable line reversal, 1 to enable line reversal. If the value is neither 0 nor 1, it is considered invalid. The factory default is 0.

To Enter On-Hook Call Alert Cadence Option

Press: # * 30 * <on-time> * <off-time> #

Both the on-time and off-time durations are programmed in 100 ms increments from 1 to 255 (0.1 - 25.5 seconds). If the value is not between 1 and 255, inclusive, it will be considered invalid. The factory default is 20 and 40, respectively.

To Enter On-Hook Call Alert Frequency Option

Press: # * 32 * <frequency> #

The frequency value is set to 0 for 20 Hz, 1 for 25 Hz, and 2 for 50 Hz. If the frequency value is greater than 2, it will be considered invalid. The factory default is 0.

To Enter Audio Input Impedance Option

Press: # * 68 * <audio Z> #

The audio Z value is set to 0 for 600 ohms, 1 for 900 ohms. If the value is neither 0 nor 1, it is considered invalid. The factory default is 0.

To Enter Ring Back Request

Press: # * 13 * #

There is no ring back value to be set; the command activates when the phone is placed back on-hook.

To Enter Restore Factory Defaults Request

Press: # * 15 * #

There is no restore defaults value to be entered; the command activates immediately. If a value is entered, it is considered invalid and the Phonecell® SX5 will not restore the factory defaults.

To Enter Periodic Self Test Option

Press: # * 76 * <self-test interval> #

The self-test interval is programmed in 1 minute increments from 1 to 65,535. A value of 0 disables periodic self test. If the value is not between 0 and 65,535, inclusive, it will be considered invalid. The factory default is 180.

To Enter Disconnect Pulse Option

Press: # * 79 * <disconnect pulse> #

The disconnect pulse value is programmed in 1 millisecond increments from 10 to 65,535. A value of 0 disables the disconnect pulse. If the value is not 0 or between 10 and 65,535, inclusive, it will be considered invalid and the FWT will not update or store this value; the currently stored value will remain. The factory default is 0.

To Enter Dial Tone Frequency Selection Option

Press: # * 80 * <dial tone frequency> #

The dial tone frequency value is set to 0 to select the North American dial tone frequency pair (350 + 440 Hz) ; set to 1 to select European dial tone frequency (425 Hz). If the dial tone frequency selection option value is neither 0 nor 1, it is considered invalid and the FWT will not update or store this value; the currently stored value will remain. The factory default is 0.

To Enter Mobile Equipment Personalization Option

Press: # * 37 * <MEP lock type> * <MEP Operation> * <MEP Password> #

The MEP lock type value is set to 0 for SIM personalization; 1 for Network personalization; 2 for Network subset personalization, 3 for Service Provider personalization, 4 for Corporate personalization. If the MEP lock type value is not in the range 0 to 4, it is considered invalid. The MEP operation value is set to 0 to activate personalization; 1 to deactivate personalization; 2 to disable personalization; 3 is reserved for future use. If the MEP operation value is not in the range 0 to 3, it is considered invalid. The MEP password is a special value available only to authorized personnel. Factory default is all lock types set to deactivated.

To Program the Operation and Maintenance Center Terminate Number

This is the number that the FWT receives calls from:

Press: # * 83 * < number> #

If the number length is greater than 16 numeric digits, it will be considered invalid. If no number is entered, the stored value is null. The factory default is null.

DIGITAL DATA SERVICE

The SX5e features a DB-9 digital computer fax/data port for connection to a personal computer (PC) - *not supplied*. When connected to a PC, the SX5e's PC interface is capable of sending and receiving digital fax and data transmissions, sending and receiving e-mail communications, and browsing the Internet. (Data speeds may vary depending upon your cellular network.)

PC Data Connection

A data cable - not included - is required for data transmission. To determine the necessary cable, count the number of PIN connections in the serial port of your PC (see below). If there are 9 PIN connections in the PC serial port, a DB-9 (female) to DB-9 (male) cable is required. If there are 25 PIN connections in the PC serial port, a DB-25 (female) to DB-9 (male) cable is required - See Figure 9.

NOTE: The SX5e does not support direct computer modem (data) operation through the phone or fax ports.

For specific digital fax/data setup procedures, see *Appendix A - How to Setup Your PC Serial Ports for Phonecell® SX5 Digital Fax/Data*.

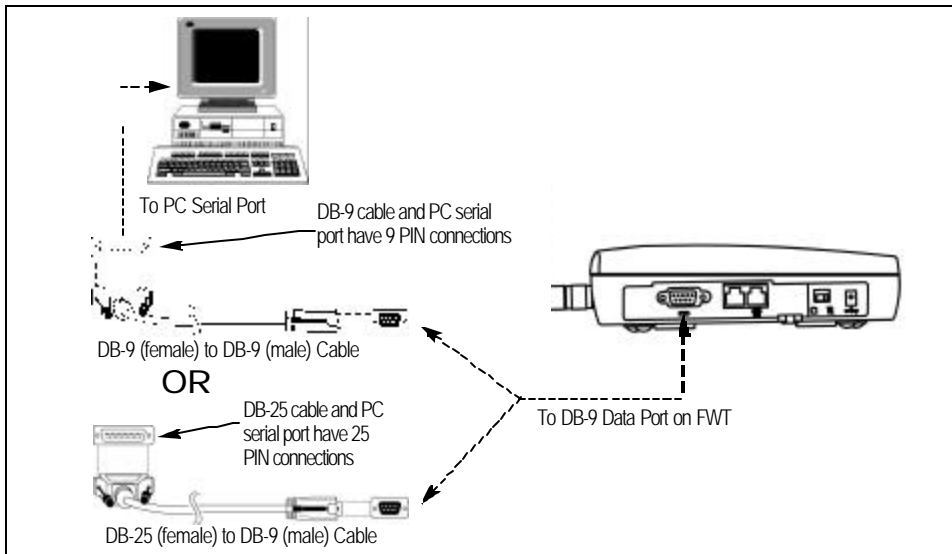


Figure 9 - PC data connection.

Sending Digital Fax

No special mode setting is required when sending a digital fax. The PC fax emulator will change the terminal mode automatically. The SX5e will reset automatically to voice call mode after sending the fax file.

Receiving Digital Fax

- 1) Set up standard 19,200 bps modem.
- 2) Install a commercial PC fax emulator (Winfax, Netfax, etc.).
- 3) Set the SX5e to PC fax mode when receiving a fax.
Press: * * 9 4 to set "Always On" fax mode. Wait for dial tone.
Press: * * 9 7 to set "One Time" fax mode. Wait for dial tone.
- 4) After receiving a fax message, the SX5e should be reset.

Data Communication (E-Mail)

- 1) Set up standard 19,200 bps modem.
- 2) The SX5e is compatible with a communication emulator (hyperterminal).
- 3) Press: * * 9 3 to set "Data Service" mode.

Browsing the Internet

- 1) Set up standard 19,200 bps modem.
- 2) Use dial-up networking setting.
- 3) Press: * * 9 3 to set "Data Service" mode.

ANALOG FAX

Analog (i.e. normal fax from fax machine) fax calls (CCITT Group 3, Bearer Service TS 62) can be made from phone and fax jacks, depending on the option set.

To Send Fax Calls

- 1) Set up your fax machine just as you would for a wired telephone.
- 2) Outgoing fax calls at the fax jack are processed directly. Outgoing fax calls at the phone jack always require the analog fax bypass string, since the default for this jack is voice calls. See the User Programming Commands section of this manual for analog fax setup.

NOTE: Make sure the fax machine is properly connected as shown in Figure 7.

To Receive Fax Calls

By factory default, you do not have to do anything to receive a fax, provided you have set-up your fax machine as shown in Figure 7. However, the user can have options to receive a fax through the phone port. Refer to the User Programming section of this addendum for instructions on programming of the single jack option and in-bound fax port option.

To Set Up Analog Fax Bypass String

NOTE: The analog fax bypass string can only be used in single jack operation.

This feature allows the phone jack to process the next outgoing call as an analog fax call. After this call, the phone jack automatically returns to the default voice protocol. The user enters this string prior to dialing the telephone number. The terminal interprets the string and properly sets up the call. Refer to the following examples.

To Send a Fax on a Fax Machine Connected to the Phone Jack:

- 1) Lift up the handset (take off-hook).
- 2) Dial # * 19 * 1 #, followed by the fax number to be called.
- 3) Press START on the fax machine.

NOTE: If the fax machine does not have a handset, enter # * 19 * 1 #, followed by the remote fax number to be called. Press START.

If the fax machine has the capability to store telephone numbers for speed dialing, the # * 19 * 1 # command string may be programmed into the machine as a prefix to the telephone number. With some machines, it may also be possible to store the command string as a speed dial number and dial the remote fax machine telephone number manually.

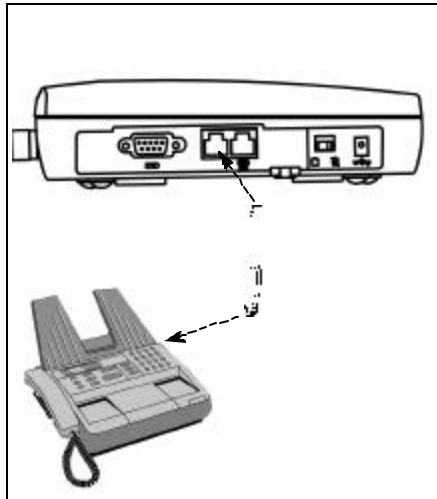


Figure 10 - Analog Fax Connection.

Dual/Single Jack Operation

The Phonecell® SX5 may be operated in either dual-jack or single-jack mode. The factory default is dual-jack mode.

Dual-Jack Operation

In dual-jack operation, for outgoing calls, the first jack to seize the line (go off-hook) will disconnect the other jack. The other jack will remain disconnected until the first jack goes back on-hook. For incoming calls, voice calls will be routed to the phone voice jack and fax calls will be routed to the fax jack.

Single-Jack Operation

The analog fax jack can be disabled leaving only the voice phone jack operational (single-jack operation). In single-jack operation, voice calls can be placed and received normally if a telephone is connected. If a fax is connected, incoming analog fax calls can be received normally, but to place outbound fax calls using the voice jack, a bypass sequence must be used as a prefix in the dialed telephone number. The analog fax jack will not generate dial tone nor ring signal if it is disabled.

To Set A Single - Jack Option

The following key sequence is used to enable or disable fax jack operation in favor of single jack operation (all telephone calls through phone jack):

* 63 * <single jack>

The single jack value is set to **0** for single fax jack operation; **1** for both voice and fax jacks. If the single jack value is neither **0** nor **1**, it is considered invalid. The factory default is **1**.

To Set In-Bound Fax Port Option

The following key sequence is used to enter the inbound fax port option:

* 67 * <fax_port>

The fax port value is set to 1 incoming fax calls to the fax port (dual port operation), or phone port (single port operation), and 3 to send incoming fax calls to the DB - 9 PC port. If the fax port value is neither 1 nor 3, it is considered invalid. The factory default is 1.

NOTE: If the single jack option above is set to single, all incoming analog calls will always go to the phone port.

PHONECELL SX5E TROUBLESHOOTING

Telephone Service is Not Working

If the telephone service is not working, first check the operation of the telephone equipment and wiring connected to your Phonecell® SX5. Test the equipment on a different service or piece of equipment to ensure proper operation, or connect a known good telephone device to the phone port on the Phonecell® SX5. This will verify the condition of the telephone equipment and the internal wiring of the telephone service to ensure that it's working properly. If the telephone system or wiring is not working properly, replace or repair the equipment as required. Otherwise, contact your cellular provider or your authorized Telular distributor.

Unable to Receive Incoming Calls

If more than one telephone or telephone device is connected to your Phonecell® SX5, make sure that all devices are "on-hook" (hung up). If one extension is "off-hook" (off its cradle), none of the extensions on your phone line will ring when an incoming call occurs.

Moisture or Ventilation Problems

Visually inspect your Phonecell® SX5's unit enclosure. Moisture can damage the equipment. Ventilation is also very important. If there are moisture or ventilation problems, move your Phonecell® SX5 to correct as necessary. See the Temperature Environment section of this manual.

No Power

The power LED lamp on the front of your Phonecell® SX5 indicates the unit's power condition. If the LED is GREEN, your Phonecell® SX5 is receiving power. If the power cord is connected and the LED lamp is not lit, the Phonecell® SX5 is not receiving power. Verify that the AC power source and its corresponding circuit breaker are functioning properly.

Battery Backup Failure

If you're using the battery, the unit must be connected to AC power for at least 15 hours to fully charge the battery before it will provide back-up power to your Phonecell® SX5. Verify that the battery has been charged for at least 15 hours and that the power source and its corresponding circuit breaker are functioning properly. Then, examine the battery for physical damage and corrosion. Replace the battery if necessary.

SAFETY INFORMATION



WARNING!

Only Authorized Service Personnel should remove the cover of your Phonedcell® SX5. For further assistance, contact your Authorized Telular Representative. Please have your unit's model and serial number ready.

Your Phonedcell® SX5 functions as both a radio transmitter and receiver. When it is ON, the FWT receives and sends out radio frequency (RF) energy. The GSM 800 unit operates in the frequency range between 824 and 894 MHz, and the GSM 1900 between 1850 MHz and 1990 MHz. Both employ commonly used phase/frequency modulation techniques. When you use your Phonedcell® SX5, the cellular system handling your call controls the power level at which your unit transmits.

Exposure to RF (Radio Frequency) Energy

In 1991, the Institute of Electrical and Electronics Engineers (IEEE), and in 1992, the American National Standards Institute (ANSI), updated the 1982 ANSI Standard for safety levels with respect to human exposure to RF energy. After reviewing the available body of research, more than 120 scientists, engineers and physicians from universities, government health agencies and industry developed this updated Standard. In March, 1993, the U.S. Federal Communications Commission (FCC) proposed the adoption of this updated Standard.

The design of your Telular Phonedcell® SX5 complies with this updated Standard. Of course, if you want to limit RF exposure even further than the updated ANSI Standard, you may choose to control the duration of your calls and operate your phone in the most power-efficient manner.

Safe Operation Requirement

Do not operate your Phonedcell® SX5 when any person is within 8 inches (20 cm) of the antenna.

Temperature Environment

Operating Temperature: From -20°C to +60°C ; Up to 95% relative humidity (non-condensing).

Storage Temperature: From -25°C to +75°C; Up to 95% relative humidity (non-condensing).

Antenna Care and Replacement

Do not use the Phonedcell® SX5 with a damaged antenna. If a damaged antenna comes into contact with the skin, a minor burn may result. Have your antenna replaced by a qualified technician immediately. Use only a manufacturer-approved antenna. Unauthorized antennas, modifications, or attachments could damage the Phonedcell® SX5.

Driving

Check the laws and regulations on the use of cellular products in the areas where you drive.

Some jurisdictions prohibit your using a cellular device while driving a vehicle. Even if your jurisdiction does not have such a law, we strongly suggest that, for safety reasons, the driver use extreme caution when operating the cellular device while the vehicle is in motion. Always obey the law.

Exposure to electronic Devices

Most modern electronic equipment is shielded from RF energy. However, RF energy from cellular devices may affect inadequately shielded electronic equipment.

RF energy may affect improperly installed or inadequately shielded electronic operating and entertainment systems in motor vehicles. Check with the manufacturer or its representative to determine if these systems are adequately shielded from external RF energy. You should also check with the manufacturer of any equipment that has been added to your vehicle.

Consult the manufacturer of any personal medical devices (such as pacemakers, hearing aids, etc.) to determine if they are adequately shielded from external RF energy.

Turn your Phonedcell® SX5 OFF in health care facilities when any regulations posted in the areas instruct you to do so. Hospitals or health care facilities may be using equipment that could be sensitive to external RF energy.



WARNING!

Your Phonecell® SX5 is intended either to be wall mounted or mounted on a flat surface to allow proper ventilation. Do not block the space beneath your Phonecell® SX5 as this could cause the unit to overheat and fail.

Aircraft

Turn OFF your Phonecell® SX5 before boarding any aircraft.

- Use it on the ground only with crew permission.
- Do not use it in the air.

To prevent possible interference with aircraft systems, U.S. Federal Aviation Administration (FAA) regulations require you to have permission from a crew member to use your cellular phone (or any other cellular product) while the plane is on the ground. To prevent interference with aircraft systems, FCC regulations prohibit using your cellular device while the plane is in the air.

Children

Do not allow children to play with your Phonecell® SX5 to prevent damage to the unit.

Blasting Areas

Construction crews often use remote control RF devices to set off explosives. Therefore, to avoid interfering with blasting operations, turn your Phonecell® SX5 OFF when in a "blasting area" or in areas posted: "Turn off two-way radio."

Potentially Explosive Atmospheres

Turn your Phonecell® SX5 OFF when in any area with a potentially explosive atmosphere. It is rare, but your Phonecell® SX5 or its accessories could generate sparks. Sparks in such areas could cause an explosion or fire resulting in bodily injury or even death.

Areas with a potentially explosive atmosphere are often, but not always, clearly marked. They include fueling areas such as gas stations; below deck on boats; fuel or chemical transfer or storage facilities; areas where the air contains chemicals or particles, such as grain, dust, or metal powders; and any other area where you would normally be advised to turn off your vehicle engine.

Do not transport or store flammable gas, liquid or explosives in the area of your Phonecell® SX5 or accessories.

Vehicles using liquefied petroleum gas (such as propane or butane) must comply with the National Fire Protection Standard (FPA-58). For a copy of this standard, contact the National Fire Protection Association, One Batterymarch Park, Quincy, MA 02269, Attn: Publications Sales Division.

FCC Part 15 Class B Compliance

This Phonecell® SX5 model has been tested and found to comply with the limits for a Class B digital device, pursuant to Part 15 of the FCC rules. These limits are designed to provide reasonable protection against harmful interference in a residential installation. This equipment generates, uses and can radiate radio frequency energy and, if not installed and used in accordance with the instructions, may cause harmful interference to radio communications. However, there is no guarantee that interference will not occur in a particular installation. If this equipment does cause harmful interference to radio or television reception, which can be determined by turning the equipment OFF and ON, the user is encouraged to try to correct the interference by one or more of the following measures:

- Reorient or relocate the antenna.
- Increase the separation between the equipment and the terminal.
- Connect the equipment into an outlet on a circuit different from that to which the terminal is connected.
- Consult your Authorized Telular Distributor or an experienced radio/TV technician for help.

IMPORTANT NOTICES

Warranty

I. WHAT THIS WARRANTY COVERS AND FOR HOW LONG:

TELULAR CORPORATION ("Telular") warrants to a distributor Buyer, or to a customer only if the customer is a Buyer directly from Telular, that the Products (including accessories) shall comply with the applicable Specifications and shall be free from defects in material and workmanship under normal use and service for a period of fifteen (15) months from date of shipment from Telular. Telular, at its option, shall at no charge either repair, replace or refund the purchase price of the Product during the warranty period, provided it is returned by Buyer in accordance with the terms of this warranty to the Telular designated repair center. Repair or replacement, at Telular's option, may include the replacement of parts, boards or Products with functionally equivalent reconditioned items. Repaired and replacement items are warranted for the balance of the original warranty period. All replaced items shall become the property of Telular. **SUCH ACTION ON THE PART OF TELULAR SHALL BE THE FULL EXTENT OF TELULAR'S LIABILITY HEREUNDER, AND BUYERS EXCLUSIVE REMEDY.** Buyer shall be responsible for all costs and expenses incurred by Buyer including without limitation any handling, labor or transportation charges. **OTHER THAN AFORESAID, THIS EXPRESS WARRANTY IS EXTENDED BY TELULAR TO BUYER ONLY AND NOT TO BUYER'S CUSTOMERS OR USERS OF BUYER'S PRODUCTS.**

II. HOW TO OBTAIN WARRANTY SERVICE

Product covered under this warranty shall only be accepted from and returned to Buyer's designated repair center. Buyer's dealers, distributors, agents, and end users cannot submit items to Telular under this warranty. To receive warranty service an RMA number must first be obtained from Telular Technical Support. The defective or non-compliant Product should be sent by Buyer freight pre-paid to: Telular Corporation, 647 North Lakeview Parkway, Vernon Hills, IL 60061, USA or other designated location. The product must be packaged in the original carton and packing material or an equivalent package and must have the assigned RMA number clearly marked on the carton. Returned Product received without an RMA number will be returned to the sender.

III. WARRANTY CONDITIONS:

This is the complete warranty for the Products manufactured by Telular and sold to Buyer. Telular assumes no obligation or liability for additions or modifications to this warranty unless made in writing and signed by an officer of Telular. Unless made in separate written agreement between Telular and Buyer, Telular does not warrant the installation, field maintenance or service of the Products or parts.

TELULAR CANNOT BE RESPONSIBLE IN ANY WAY FOR ANY ANCILLARY EQUIPMENT NOT FURNISHED BY TELULAR WHICH IS ATTACHED TO OR USED IN CONNECTION WITH THE PRODUCTS OR FOR OPERATION OF THE PRODUCTS WITH ANY ANCILLARY EQUIPMENT AND ALL SUCH EQUIPMENT IS EXPRESSLY EXCLUDED FROM THIS WARRANTY. FURTHERMORE, TELULAR CANNOT BE RESPONSIBLE FOR ANY DAMAGE TO THE PRODUCTS RESULTING FROM THE USE OF ANCILLARY EQUIPMENT NOT FURNISHED BY TELULAR FOR USE WITH THE PRODUCTS.

WHEN THE PRODUCT IS USED IN CONJUNCTION WITH ANCILLARY OR PERIPHERAL EQUIPMENT NOT MANUFACTURED BY TELULAR, TELULAR DOES NOT WARRANT THE OPERATION OF THE PRODUCT/PERIPHERAL COMBINATION, AND TELULAR SHALL HONOR NO WARRANTY CLAIM WHERE THE PRODUCT IS USED IN SUCH A COMBINATION AND IT IS DETERMINED BY TELULAR THAT THERE IS NO FAULT WITH THE PRODUCT. TELULAR DISCLAIMS LIABILITY FOR RANGE, COVERAGE, AVAILABILITY, OR OPERATION OF THE CELLULAR SYSTEM WHICH IS PROVIDED BY THE CARRIER.

IV. WHAT THIS WARRANTY DOES NOT COVER:

(a) Subsequent upgrades and enhancements to the Product. (b) Defects, non-compliance or damage resulting from use of the Product in other than its normal and customary manner or environment. (c) Defects, noncompliance or damage from misuse, lightening, accident or neglect. (d) Defects, noncompliance or damage from improper testing, operation, maintenance, installation, adjustment, or any alteration or modification of any kind. (e) Product disassembled or repaired in such a manner as to adversely affect performance or prevent adequate inspection and testing to verify any warranty claim. (f) Product which has had the serial number removed or made illegible. (g) Defects, non-compliance or damage due to spills of food or liquid. (h) All plastic surfaces and all other externally exposed parts that are scratched or damaged due to customer normal use. (i) Costs and expenses, including without limitation handling, labor and transportation, incurred in returning Product for warranty service to Telular's Repair Center. (j) Repair, programming or servicing by someone other than Telular.

V. GENERAL PROVISIONS:

THIS WARRANTY IS GIVEN IN LIEU OF ALL OTHER EXPRESS OR STATUTORY WARRANTIES. IMPLIED WARRANTIES, INCLUDING WITHOUT LIMITATION IMPLIED WARRANTIES OF MERCHANTABILITY, FITNESS FOR A PARTICULAR PURPOSE, TITLE, INFRINGEMENT, DELIVERY, NEGLIGENCE AND PERSONAL INJURY, ARE DISCLAIMED. FURTHER, AS THE CELLULAR CARRIER IS NOT CONTROLLED BY TELULAR, NO WARRANTY IS MADE AS TO COVERAGE, AVAILABILITY OR GRADE OF SERVICE PROVIDED BY THE CELLULAR CARRIER. IN NO EVENT SHALL TELULAR BE LIABLE FOR DAMAGES IN EXCESS OF THE PURCHASE PRICE OF THE PRODUCT, FOR ANY LOSS OF USE, LOSS OF TIME, INCONVENIENCE, COMMERCIAL LOSS, LOST PROFITS OR SAVINGS OR OTHER INCIDENTAL, SPECIAL OR CONSEQUENTIAL DAMAGES ARISING OUT OF THE USE OR INABILITY TO USE SUCH PRODUCT TO THE FULL EXTENT SUCH MAY BE DISCLAIMED BY LAW. SOME JURISDICTIONS DO NOT ALLOW THE EXCLUSION OR LIMITATIONS OF INCIDENTAL OR CONSEQUENTIAL DAMAGES OR LIMITATION ON HOW LONG AN IMPLIED WARRANTY LASTS.

VI. SOFTWARE PROVISIONS:

Laws in the United States and other countries preserve for Telular certain exclusive rights for copyrighted Telular software such as the exclusive rights to reproduce in copies and distribute copies of such Telular software. Telular software may be copied into, used in and redistributed with only the Product associated with such Telular software. No other use, including without limitation, disassembly of such Telular software or exercise of exclusive rights in such Telular software is permitted and Telular reserves all rights not expressly granted in this Limited Commercial Warranty.

Patents:

Telular Corporation products are protected and manufactured under one or more of the following U.S. patents and related international patents and patents pending relating thereto: 4,658,096; 4,737,975; 4,775,997; 4,868,519; 4,922,517; 5,134,651; 5,361,297; 5,469,494; 5,046,085; 5,715,296.

Trademarks:

Telular Corporation owns the following registered trademarks: TELULAR and design, TELULAR, CELJACK, MAXJACK, TELCEL, HEXAGON LOGO, PHONECELL, CELSERV, TELGUARD, CPX, and AXCELL.

APPENDIX A:

HOW TO SETUP PC SERIAL PORTS FOR PHONECELL DIGITAL FAX/DATA

Requirements

- GSM account with your network service provider including a Data/Fax facility.
- PC/Laptop/ Notebook with Com Port.
- Windows 95/98

NOTE: When all of the above have been satisfied, you may proceed.

Modem Setup

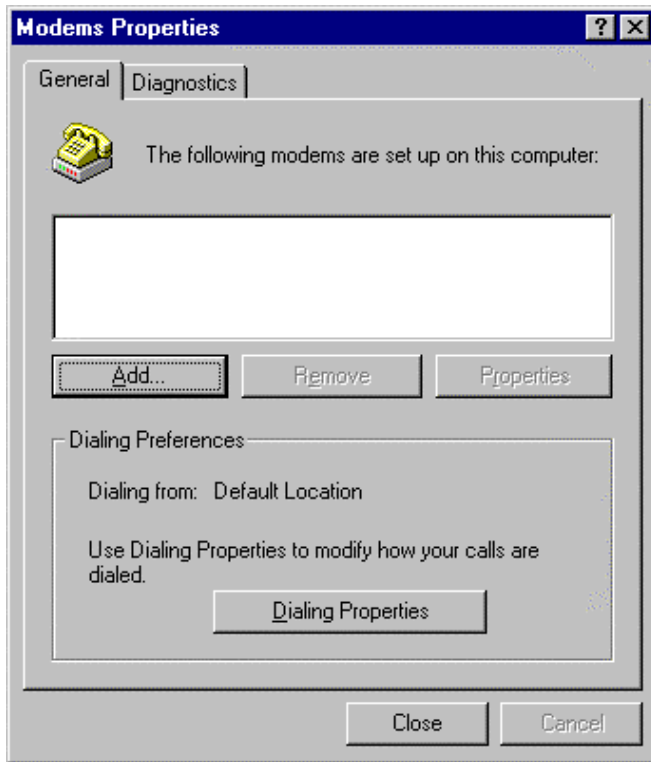
- 1) Power on your PC/laptop and start Windows 95/98.
- 2) Using the PC pointing device, press the "START" button, select "SETTINGS" and then "CONTROL PANEL". Once the Control Panel window appears double click the MODEMS icon button. The modem properties window will appear.



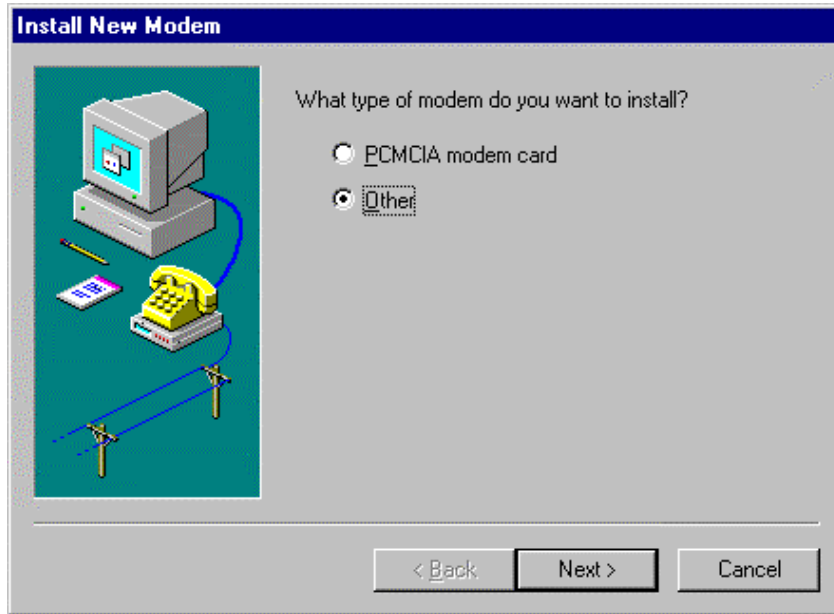
MODEMS

NOTE: A data card modem device may appear in the list of installed modems.

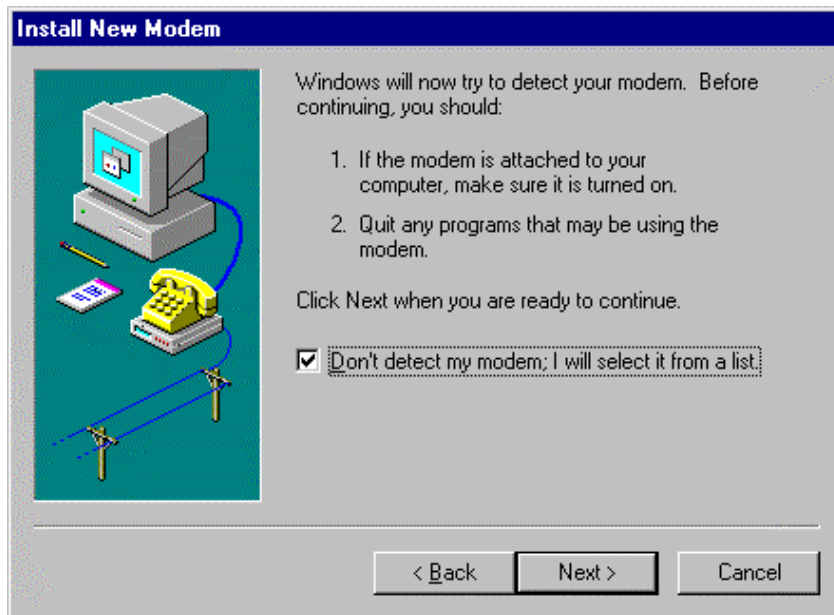
- 3) Click the ADD button to install a new modem device for the Phonecel® SX5.



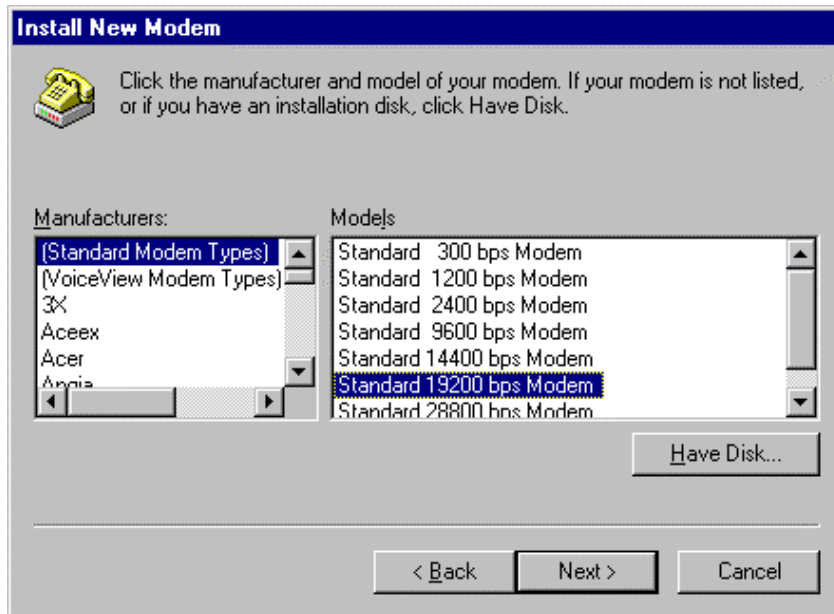
- 4) The install new modem window may appear asking for the type of modem to install. Click on "Other" followed by clicking the NEXT button. If this window does not appear, go to Step 5.



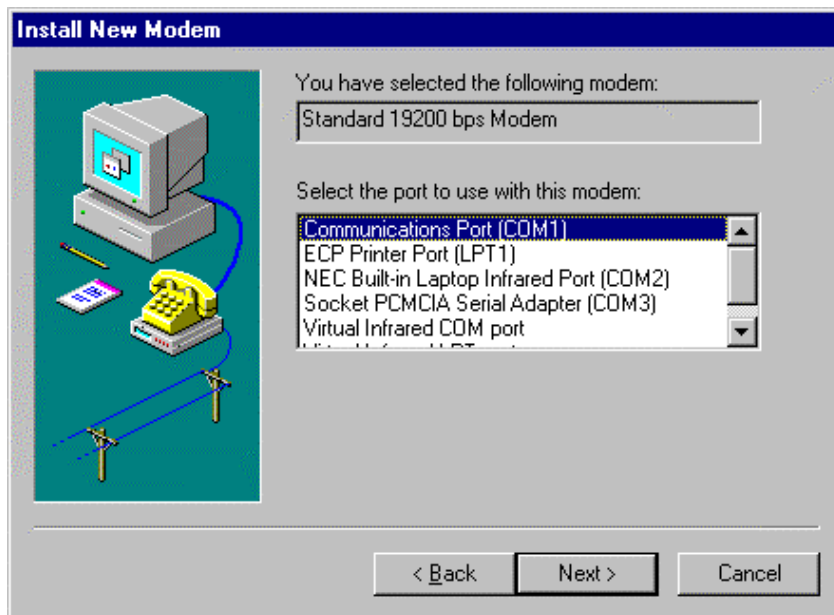
- 5) The install new modem window will appear. Then, click on the "Don't detect my modem option" followed by clicking the NEXT button.



- 6) The install new modem will update again to select the manufacturer and modem model. Click on "Standard Modem Types" from the manufactures list followed by "Standard 19200 bps Modem" from the model list. Then click on the NEXT button.



- 7) The install new modem will update to select the com port. Click on the available serial port and then click on the "Next" button. Windows 95 will create a modem configuration file for the Phonecell® SX5. This may take several minutes.



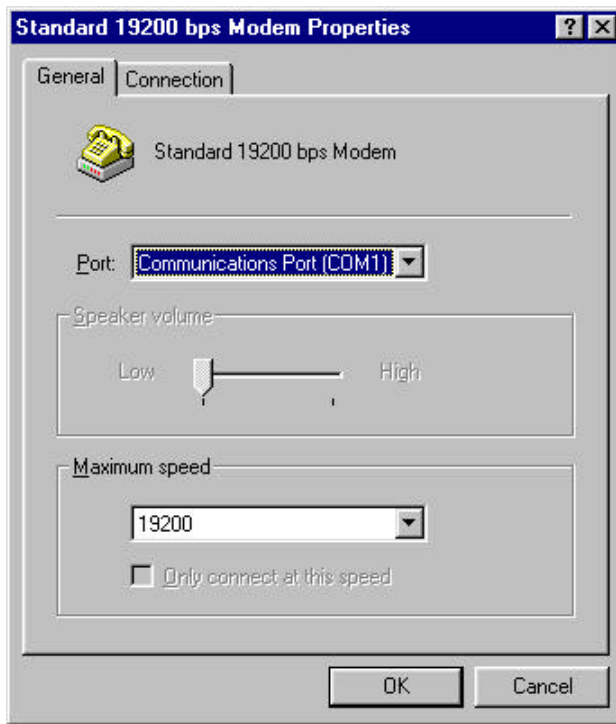
8) The Install New Modem window will update again. Click on Finish to proceed.



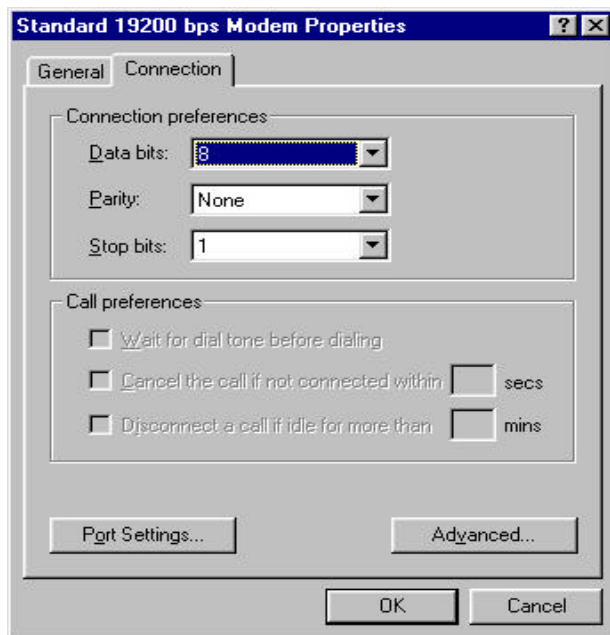
9) The Modems Properties window should appear. Click on the Properties button.



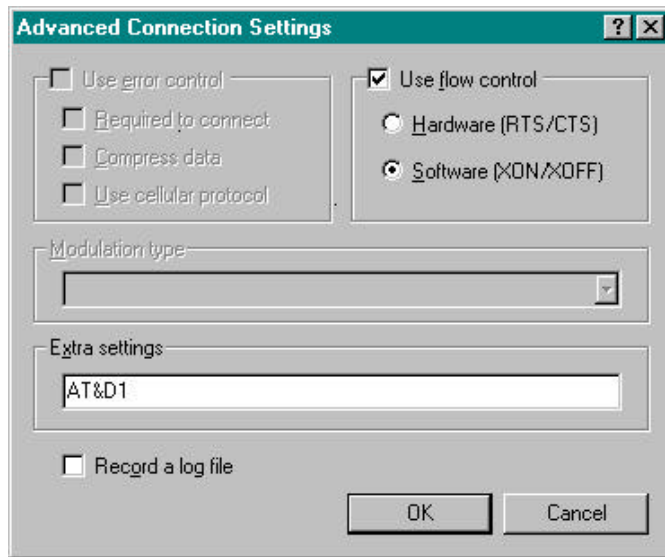
- 10) The Standard 19200 bps Modem Properties window will open in the General tab. Set as shown with the com port you have selected.



- 11) Then click on the Connection tab. Set as shown below.



12) Click on the Advanced button. Set as shown.



13) Click on OK and Close to back out of each window. Your modem is now set up.